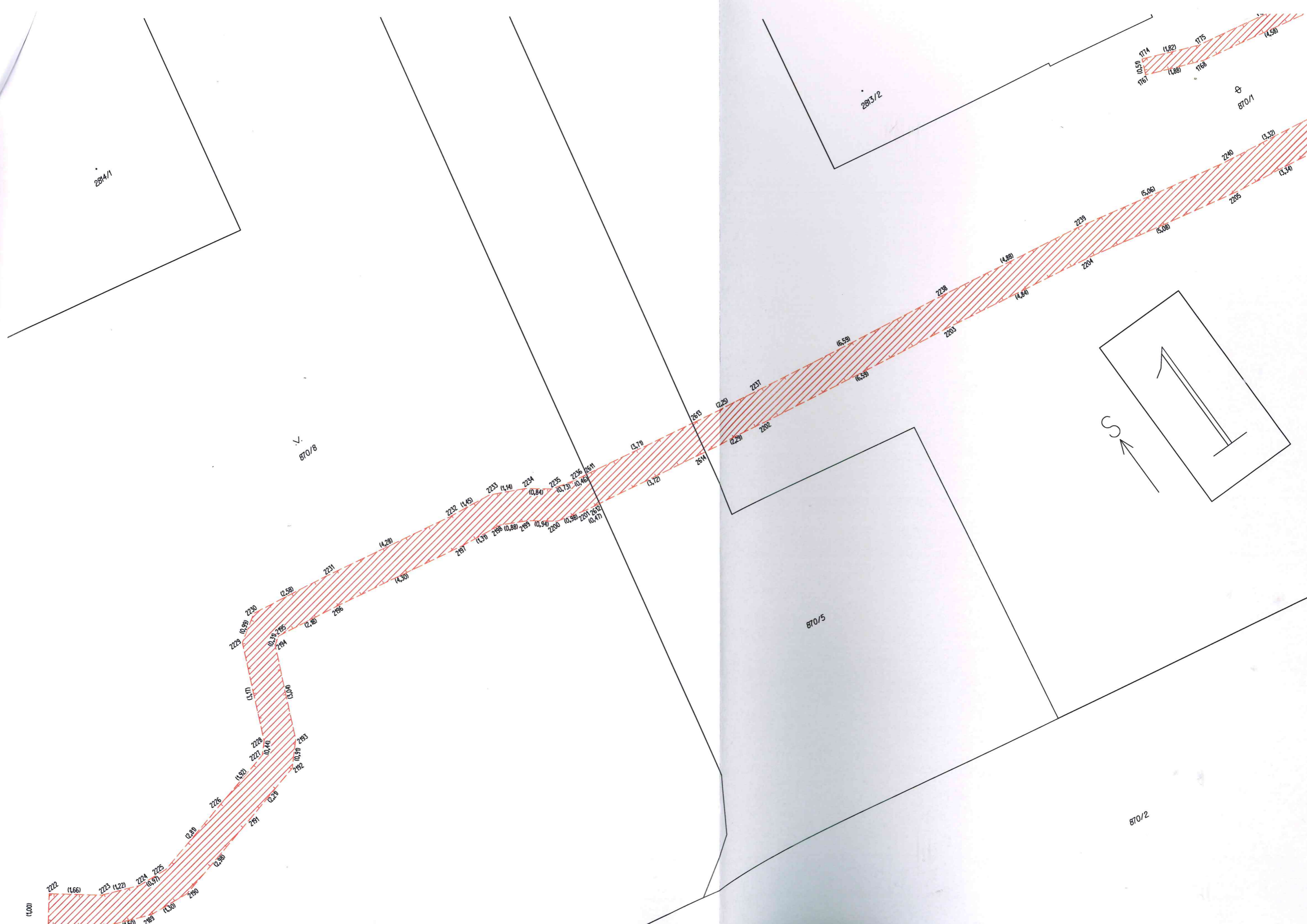


PŘEHLED KLADŮ GRAFICKÉ ČÁSTI GP





284/1

870/8

283/2

870/5

870/2

870/1

(1,00)

222

(1,66)

223

(1,22)

224

(0,97)

225

(1,50)

288

(1,50)

289

(2,38)

290

(2,38)

291

(2,23)

292

(0,97)

293

(0,44)

228

(3,17)

294

(0,24)

295

(0,99)

229

(0,99)

230

(2,58)

231

(4,28)

286

(4,30)

287

(1,57)

288

(0,88)

289

(0,94)

290

(0,98)

291

(0,47)

200

(0,98)

201

(0,47)

202

(0,73)

203

(0,46)

204

(0,84)

205

(1,14)

206

(1,45)

207

(0,84)

208

(0,73)

284

(3,72)

285

(2,29)

286

(2,29)

287

(6,59)

288

(6,59)

289

(4,88)

290

(4,84)

291

(5,06)

292

(5,06)

293

(3,32)

294

(3,34)

295

(4,58)

296

(1,82)

297

(1,88)

298

(1,67)

299

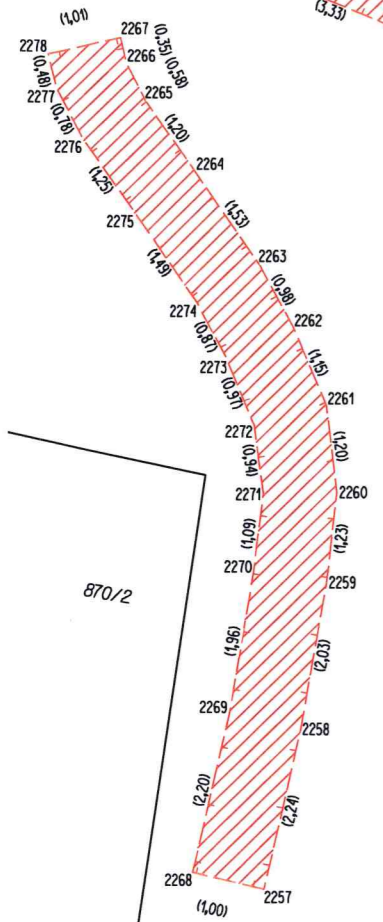
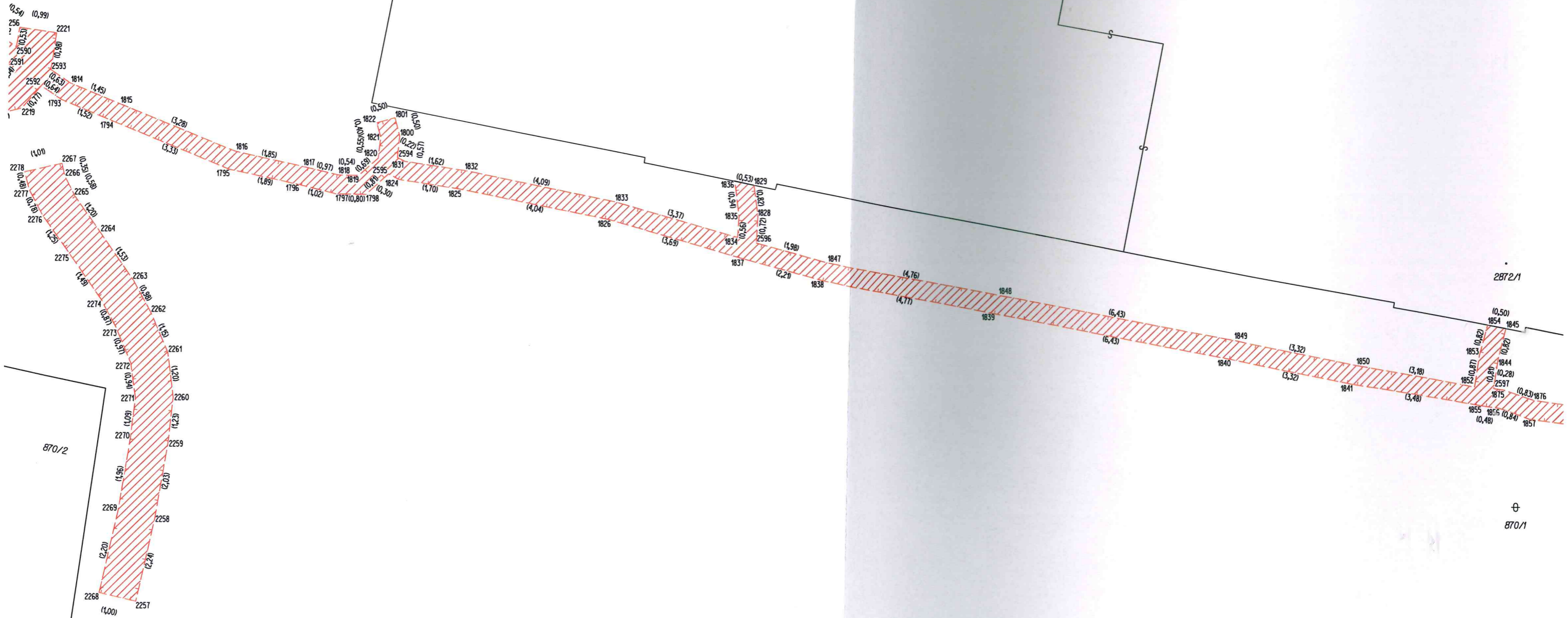
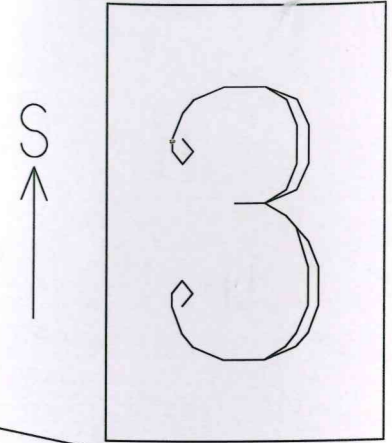
(0,51)

300

(1,74)

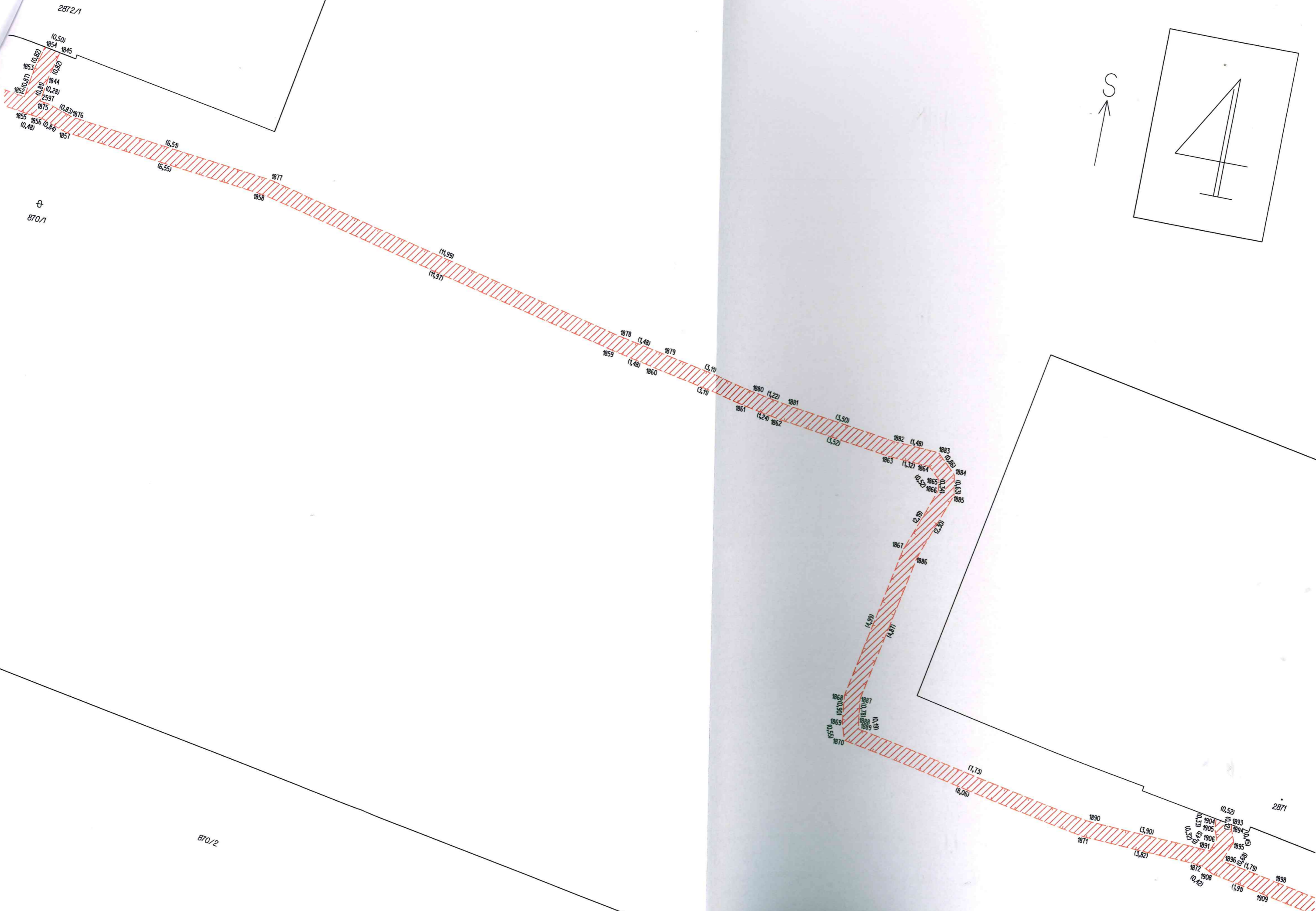
301

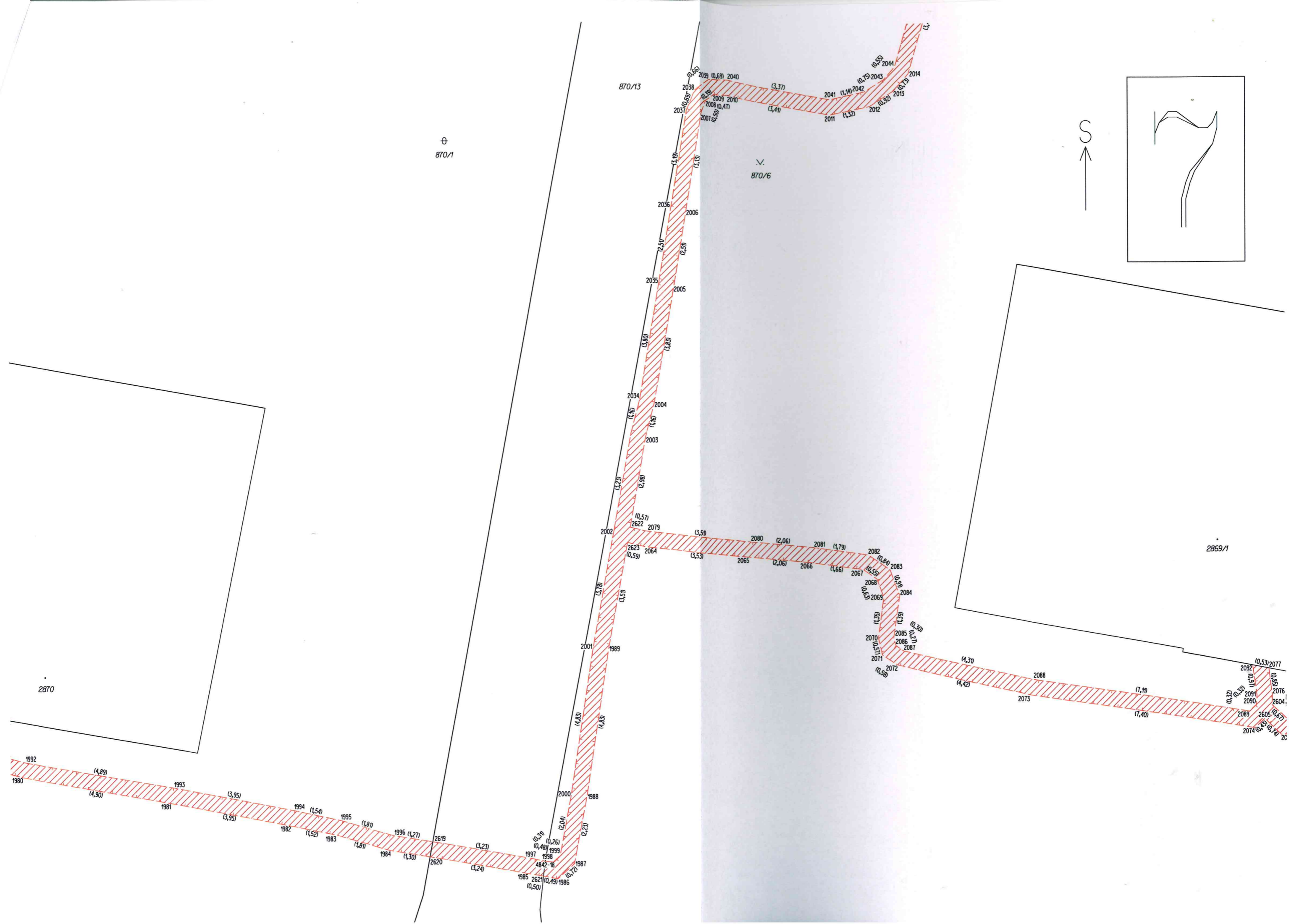
(4,58)

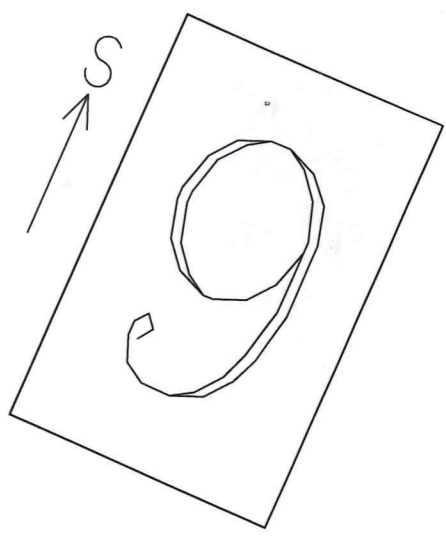
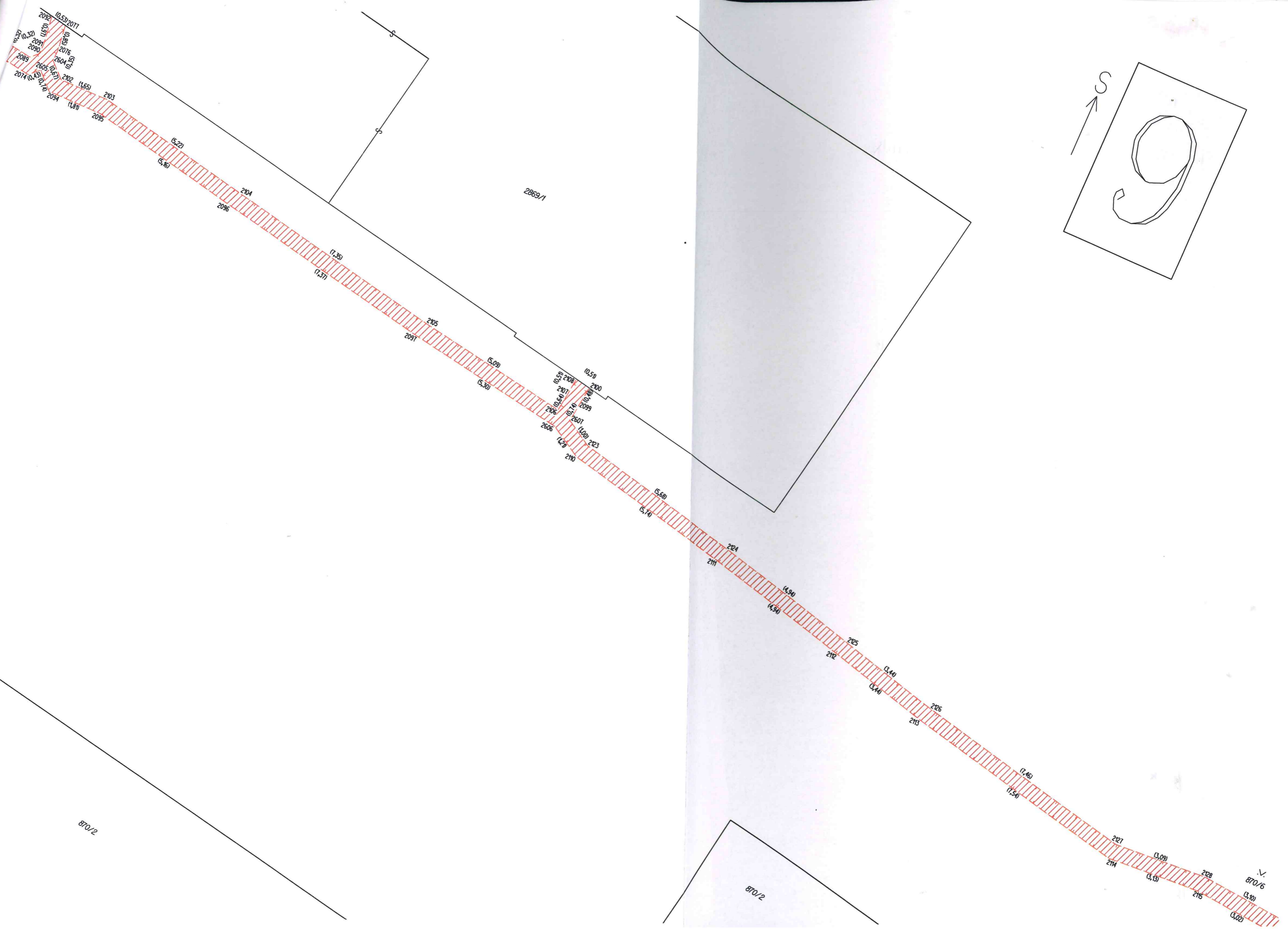


870/2

870/1





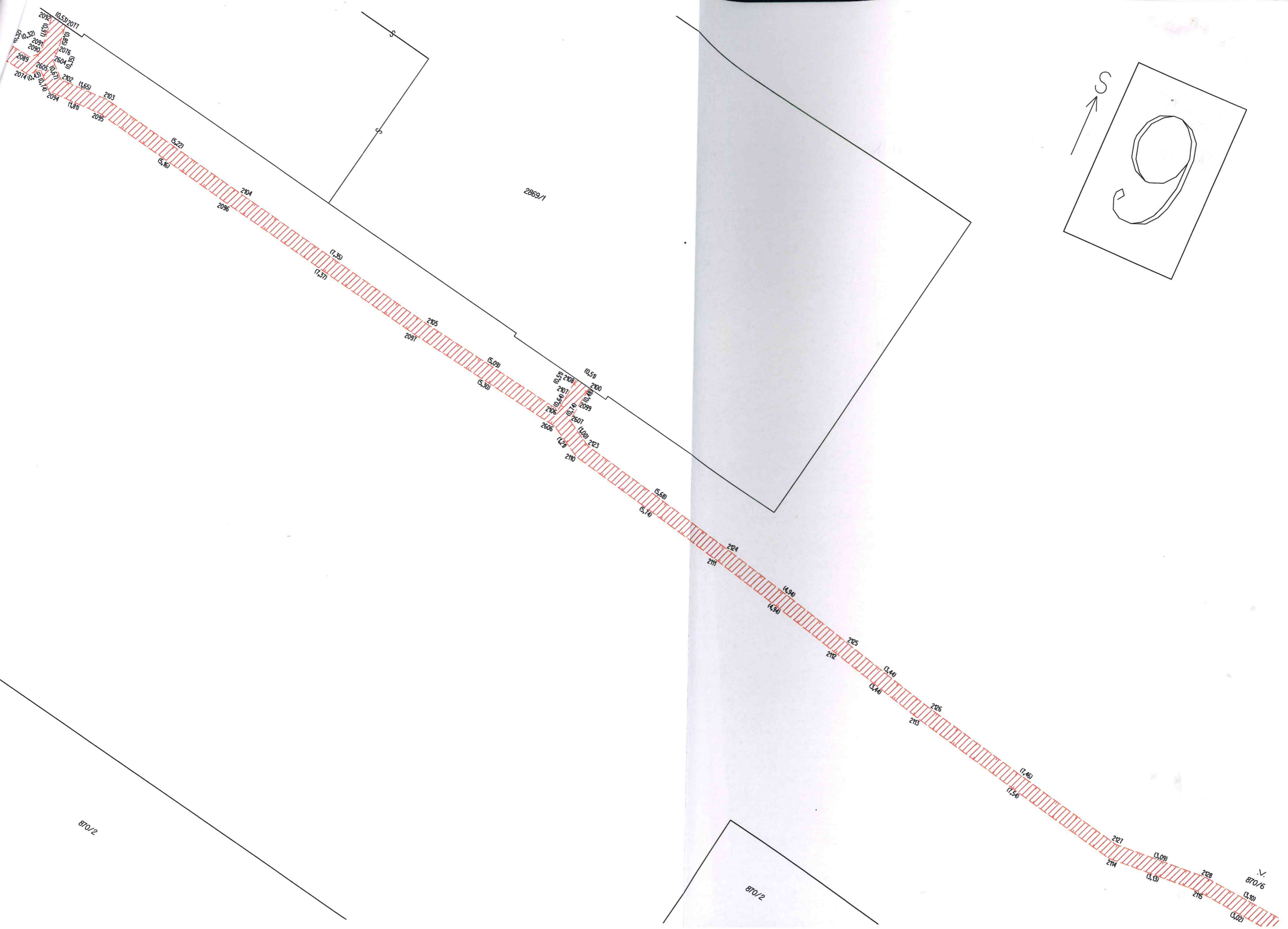


870/2

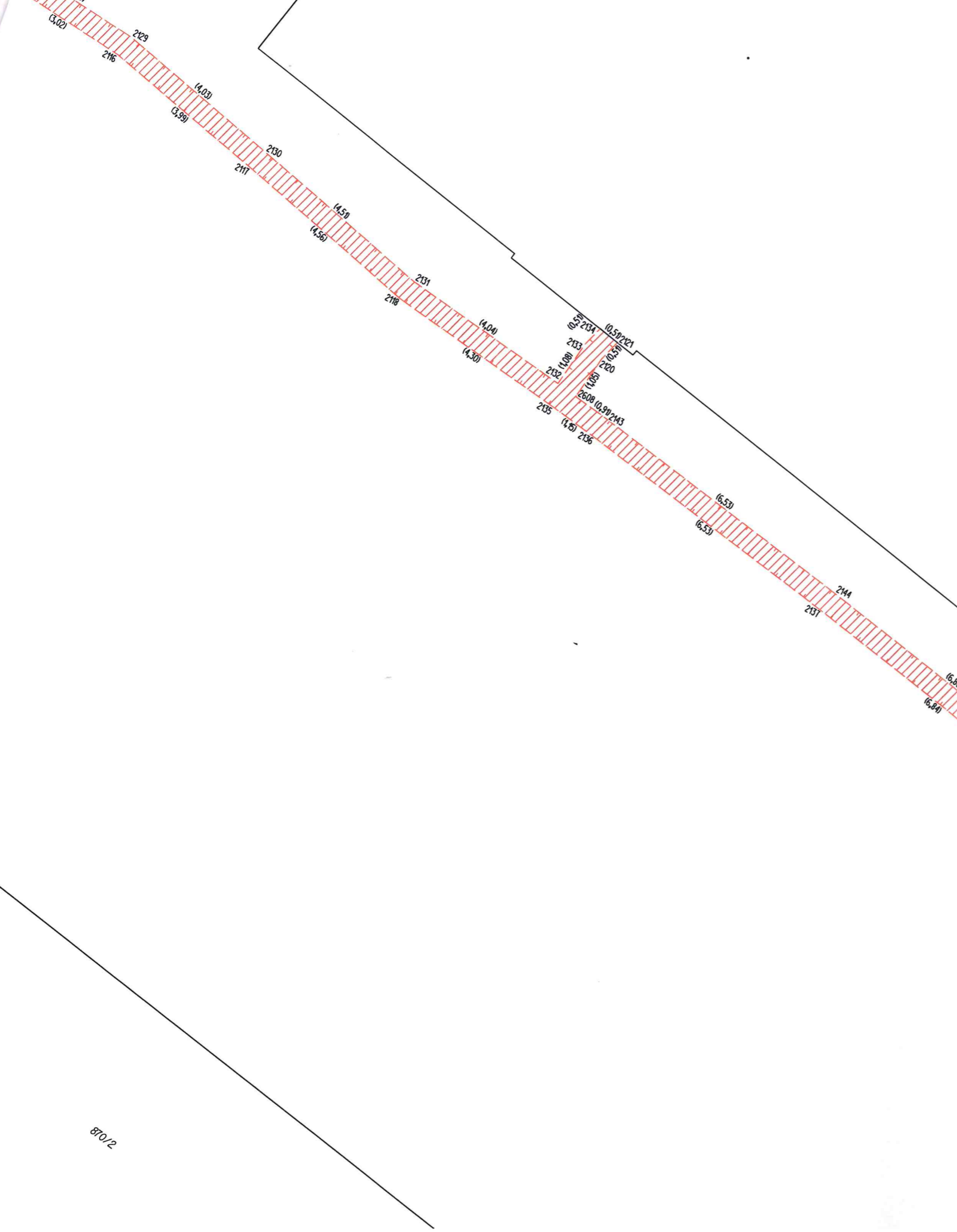
870/2

870/6

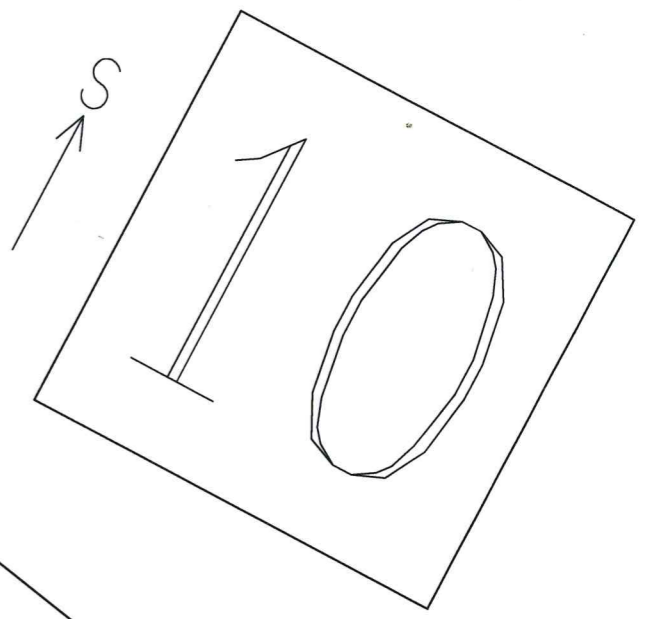
2869/1



V.
870/6
(3.10)



V.
870/6



2888/1

870/2

3864

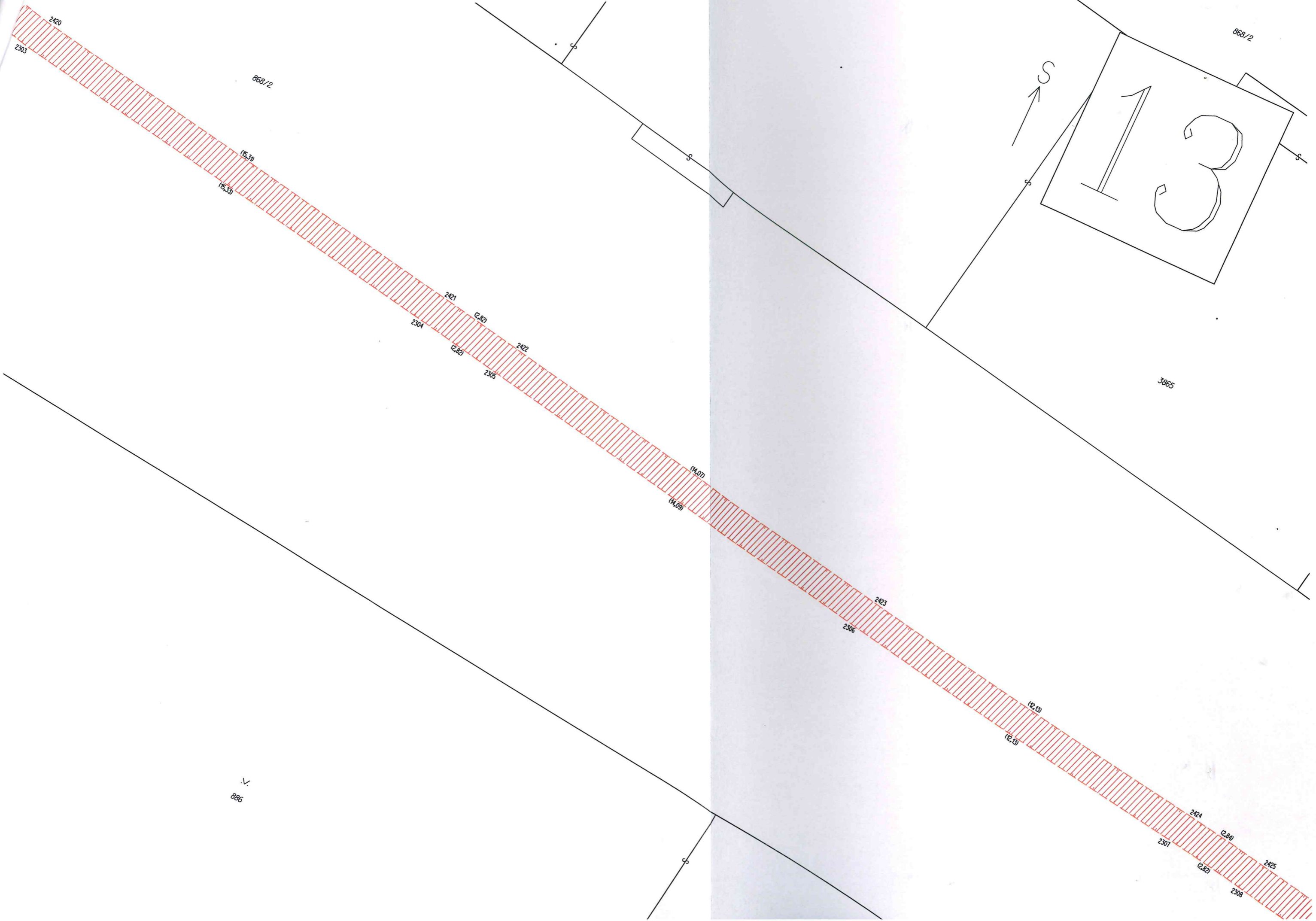


12

S ↑

3865

868/2



886
V

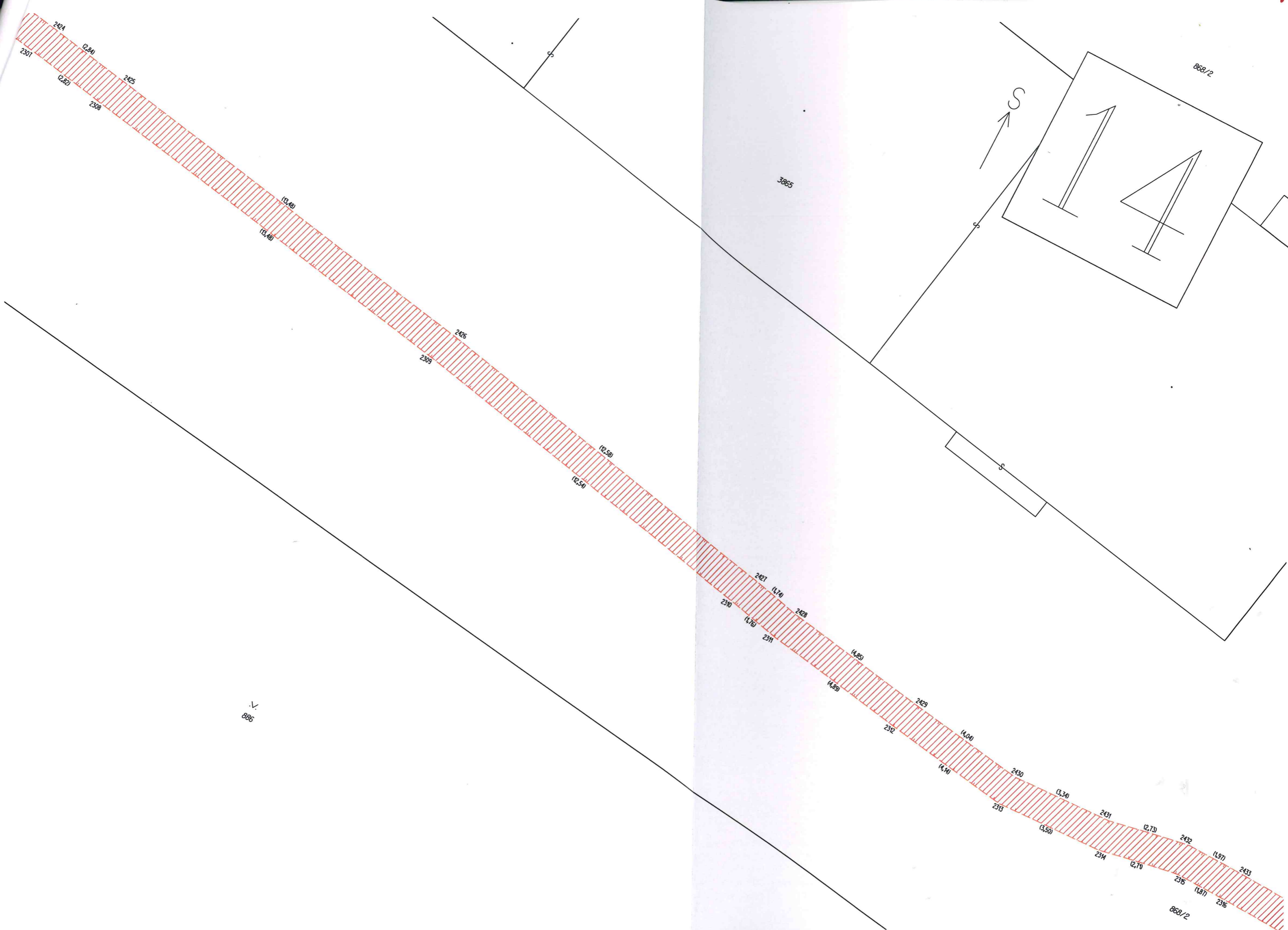
868/2

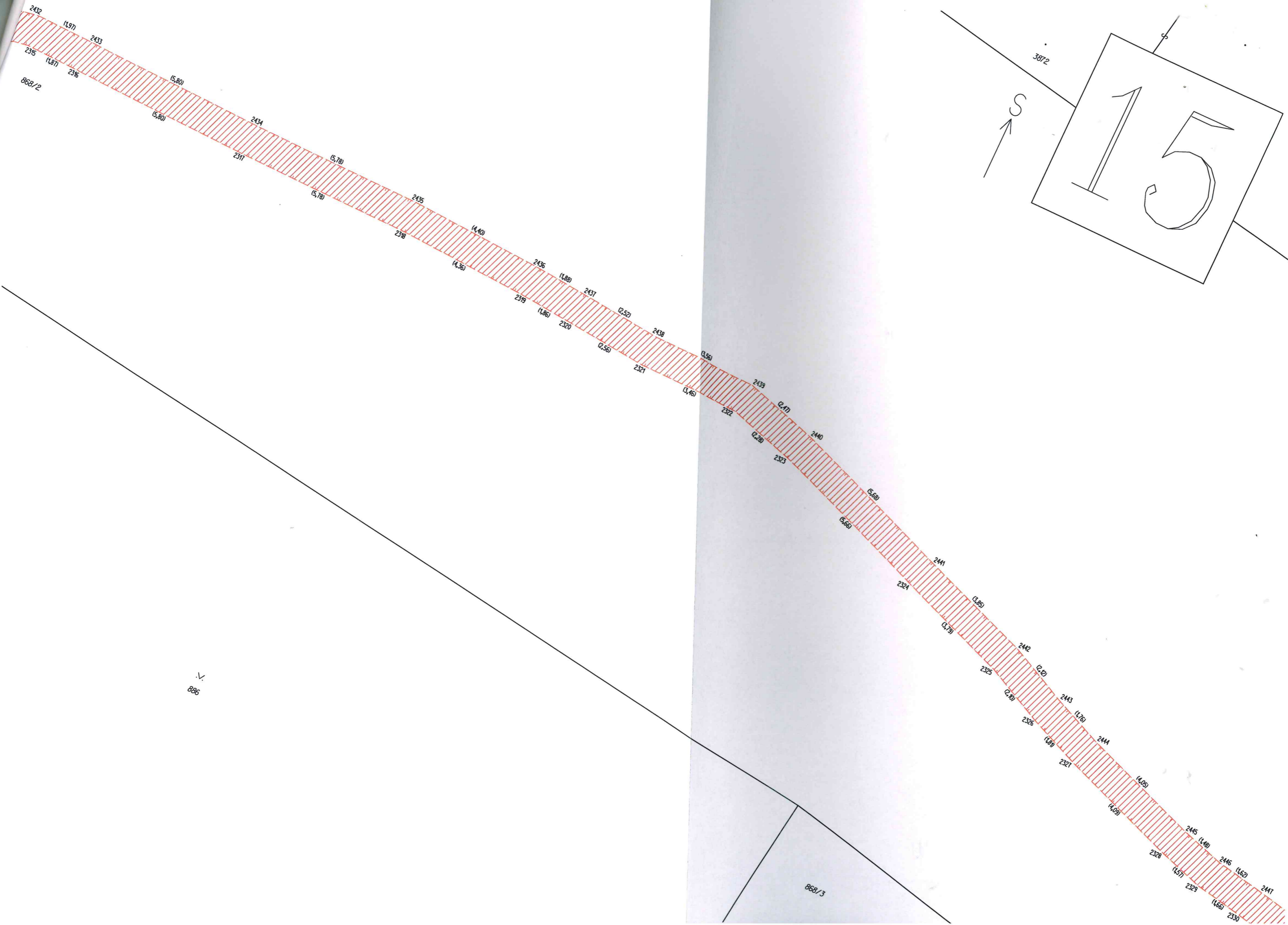
868/2

3865

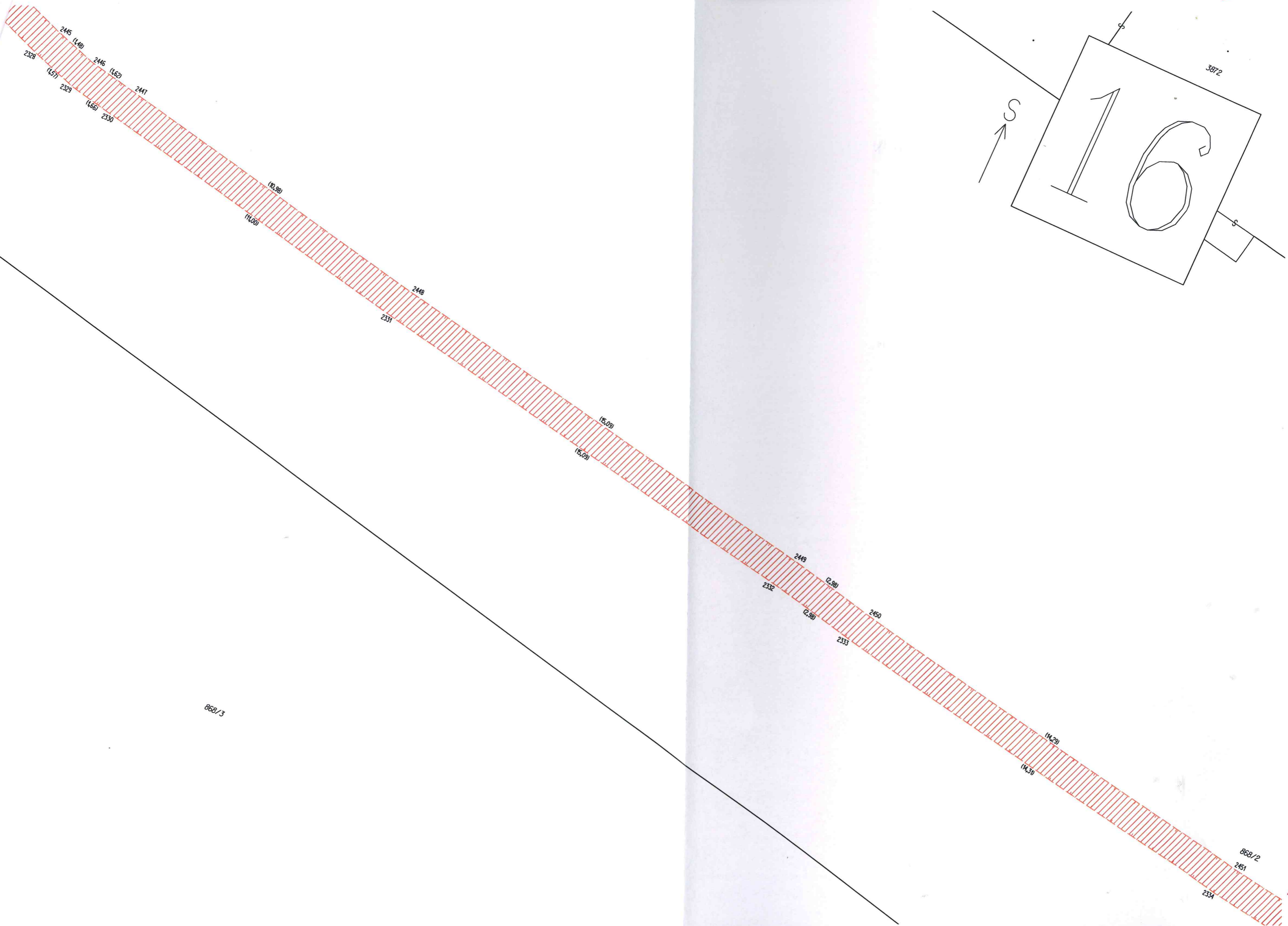
S
↑

1
3





V.
886



868/3

868/2

3872

S

2451

2334

14.29

14.30

2333

2450

2.90

2.90

2332

2449

15.09

15.09

2331

2448

14.60

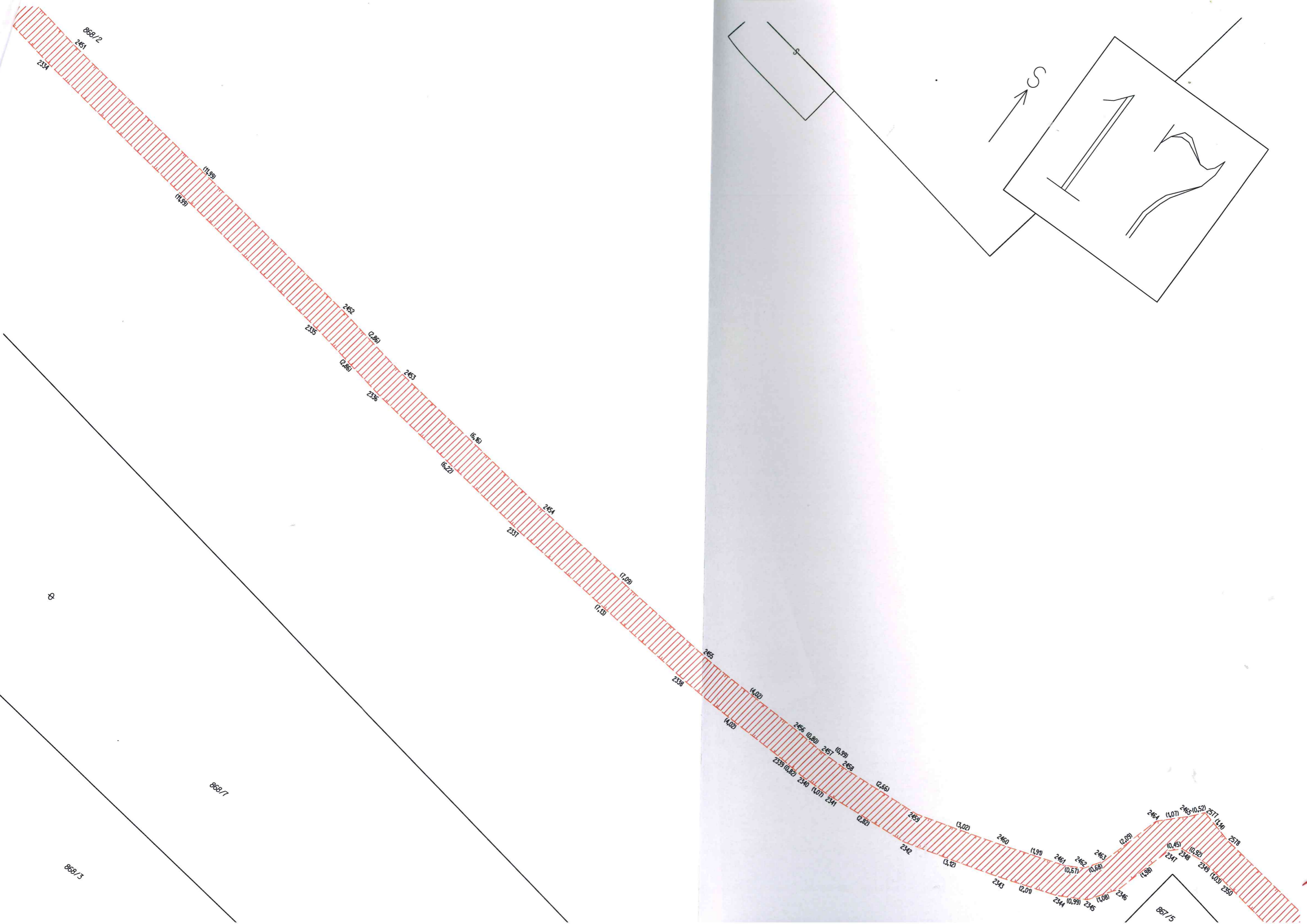
10.80

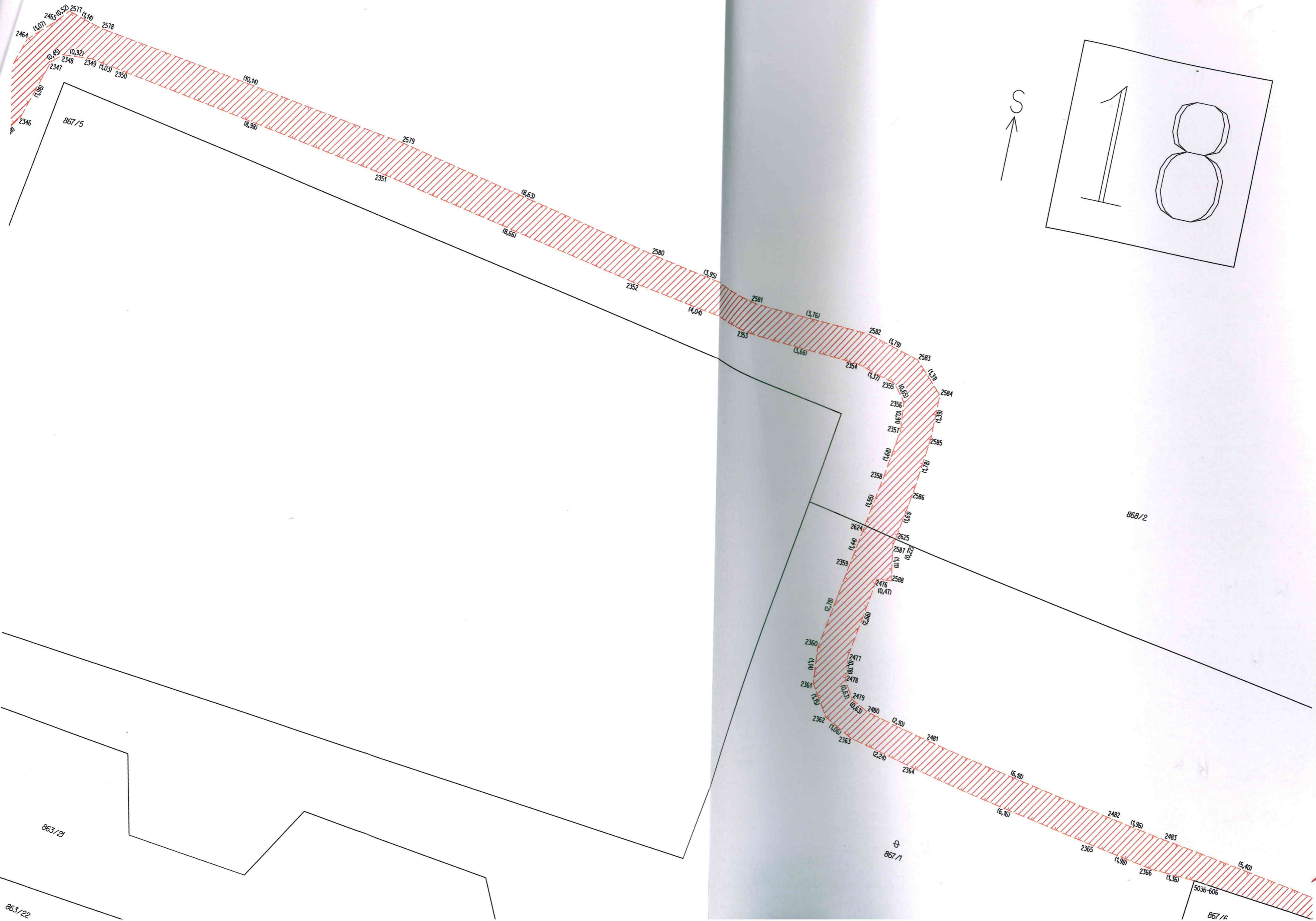
14.66

2329

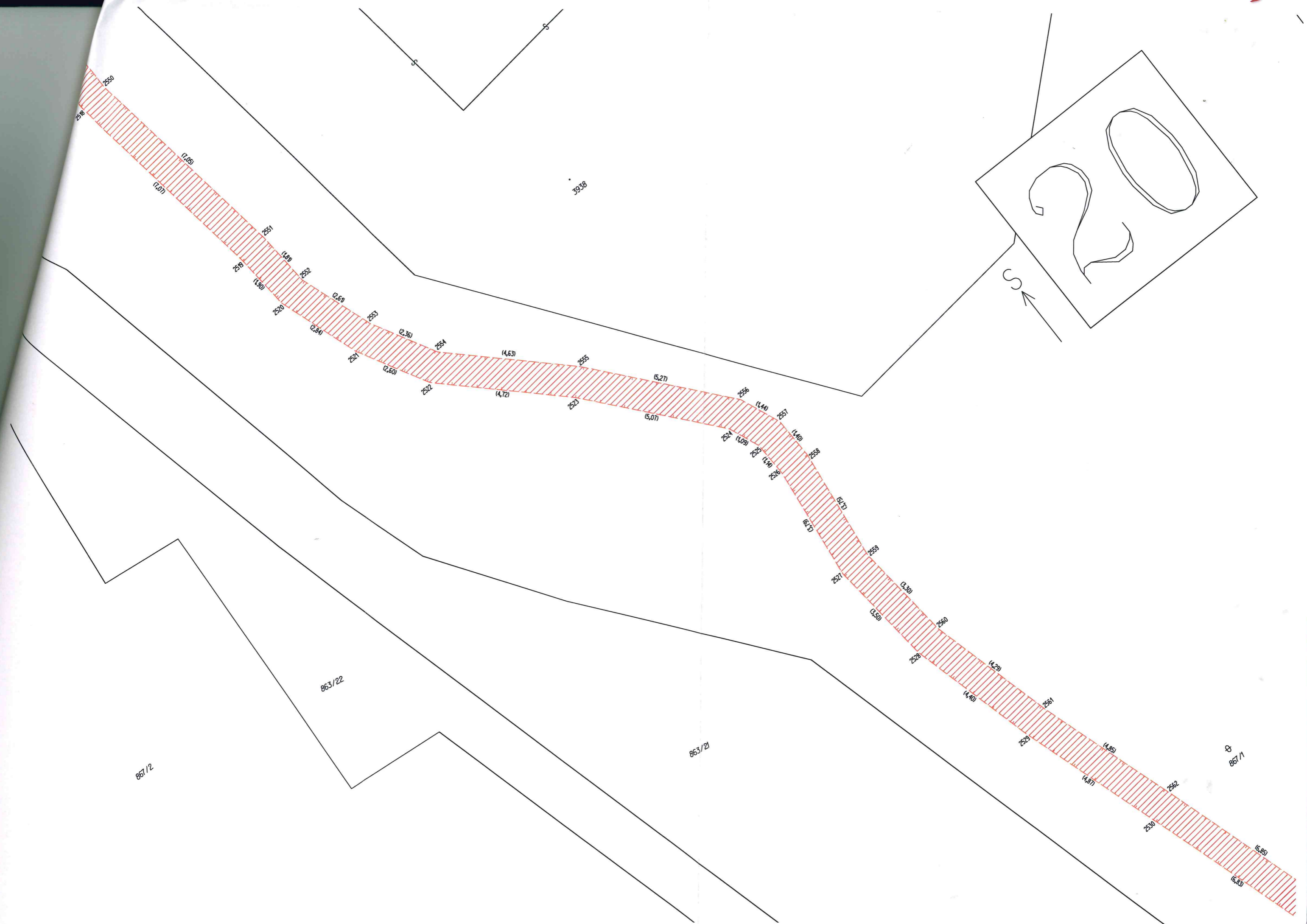
14.57

2328









867/2

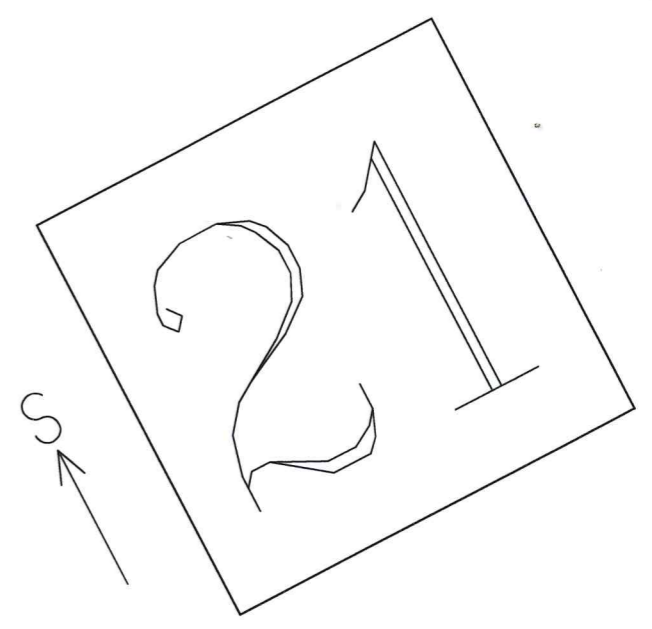
863/22

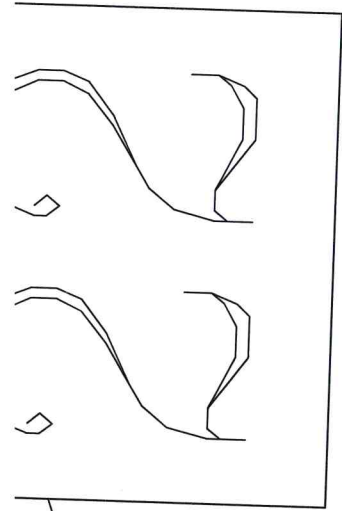
863/21

867/1

3938

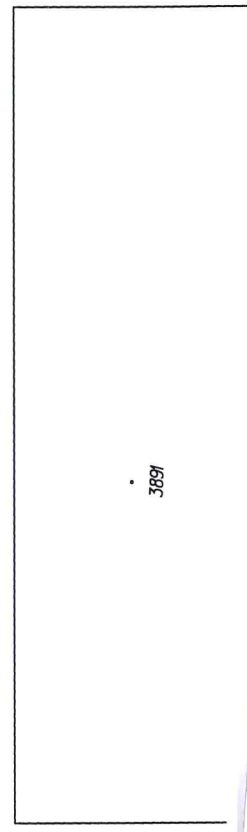
S





S ←

868/2



3897

), a
vřely

sta č.

72

parc. č.
č a obci

tastrální

1113,52
žstevní:
, č. j. OV
výstavby.
čanského

ěž „věcné
působem
, a s tím
soustavy
dobu a v
vyznačen
řadu dne