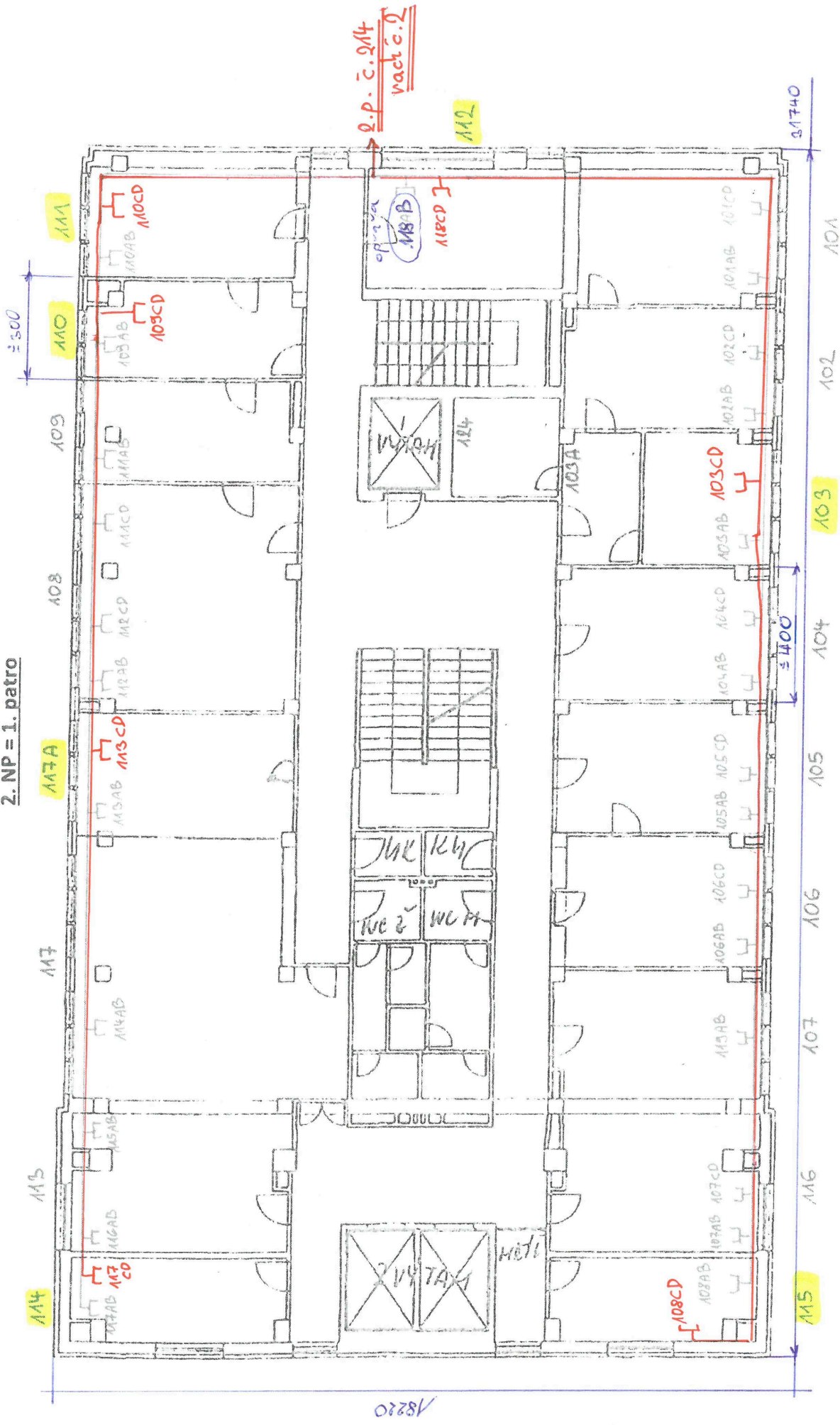


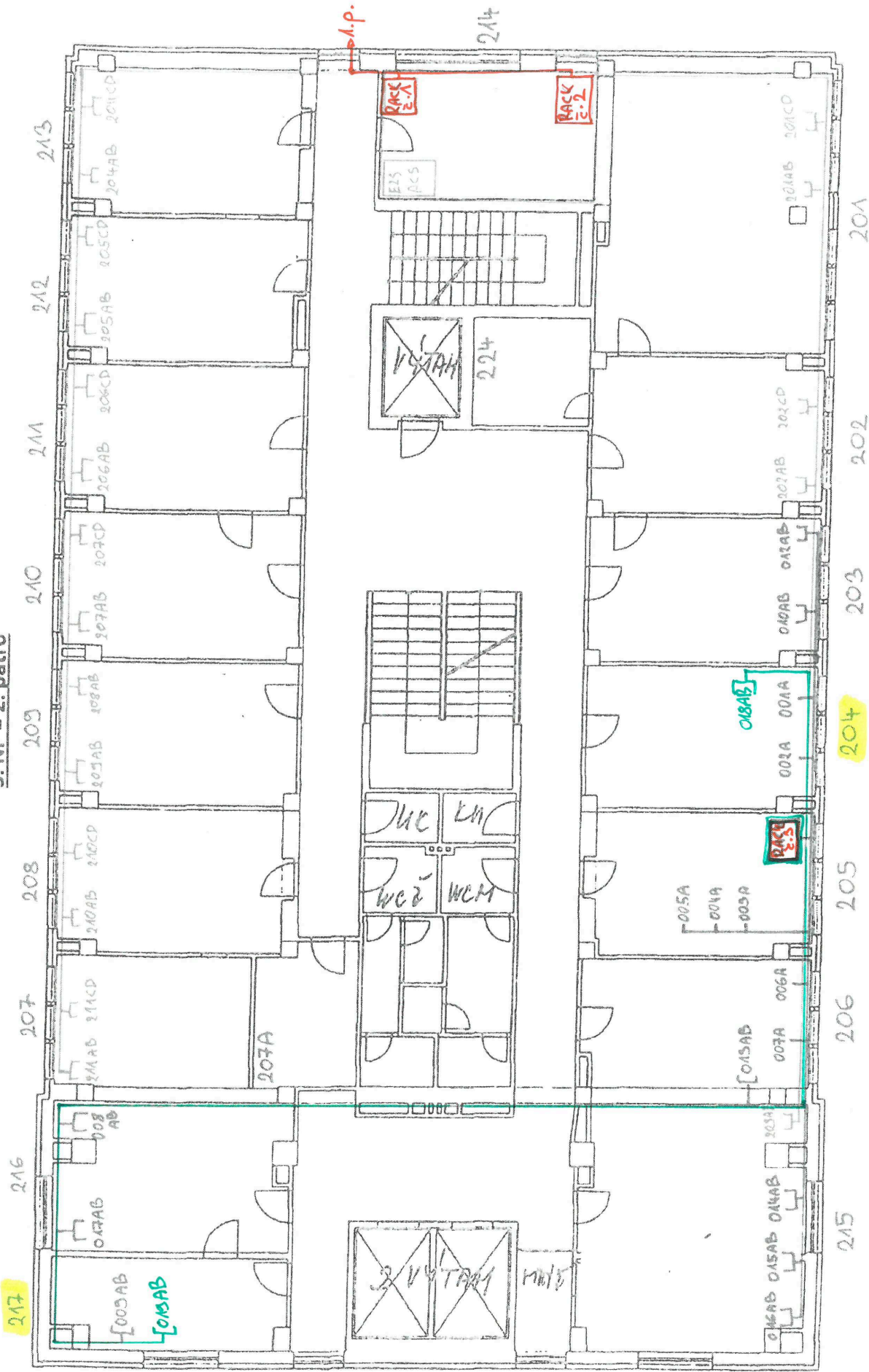
2. NP = 1. patro



- 7ks dvojzakovch

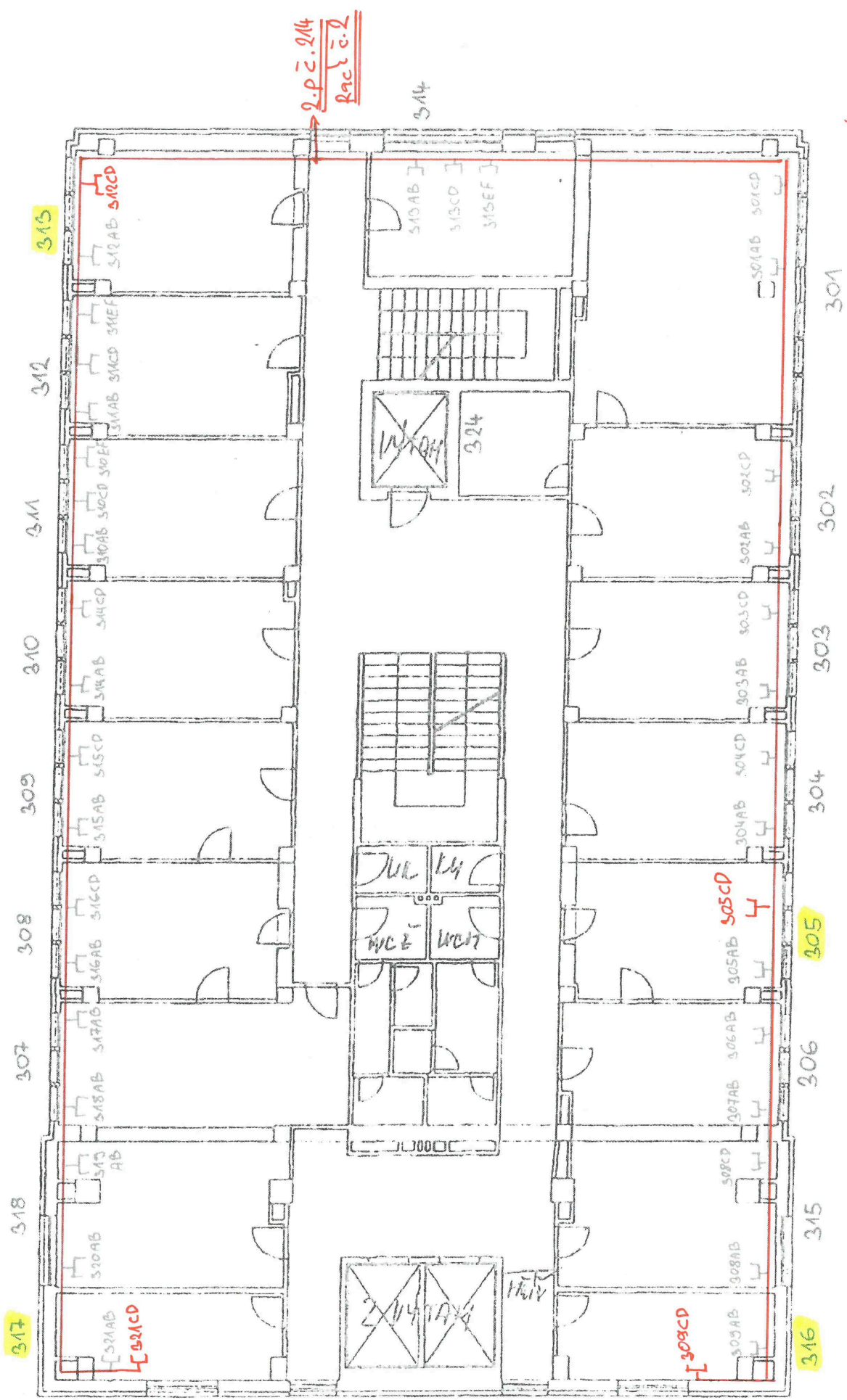
18220

3. NP = 2. patro



-2 ks Arrojáčůvých

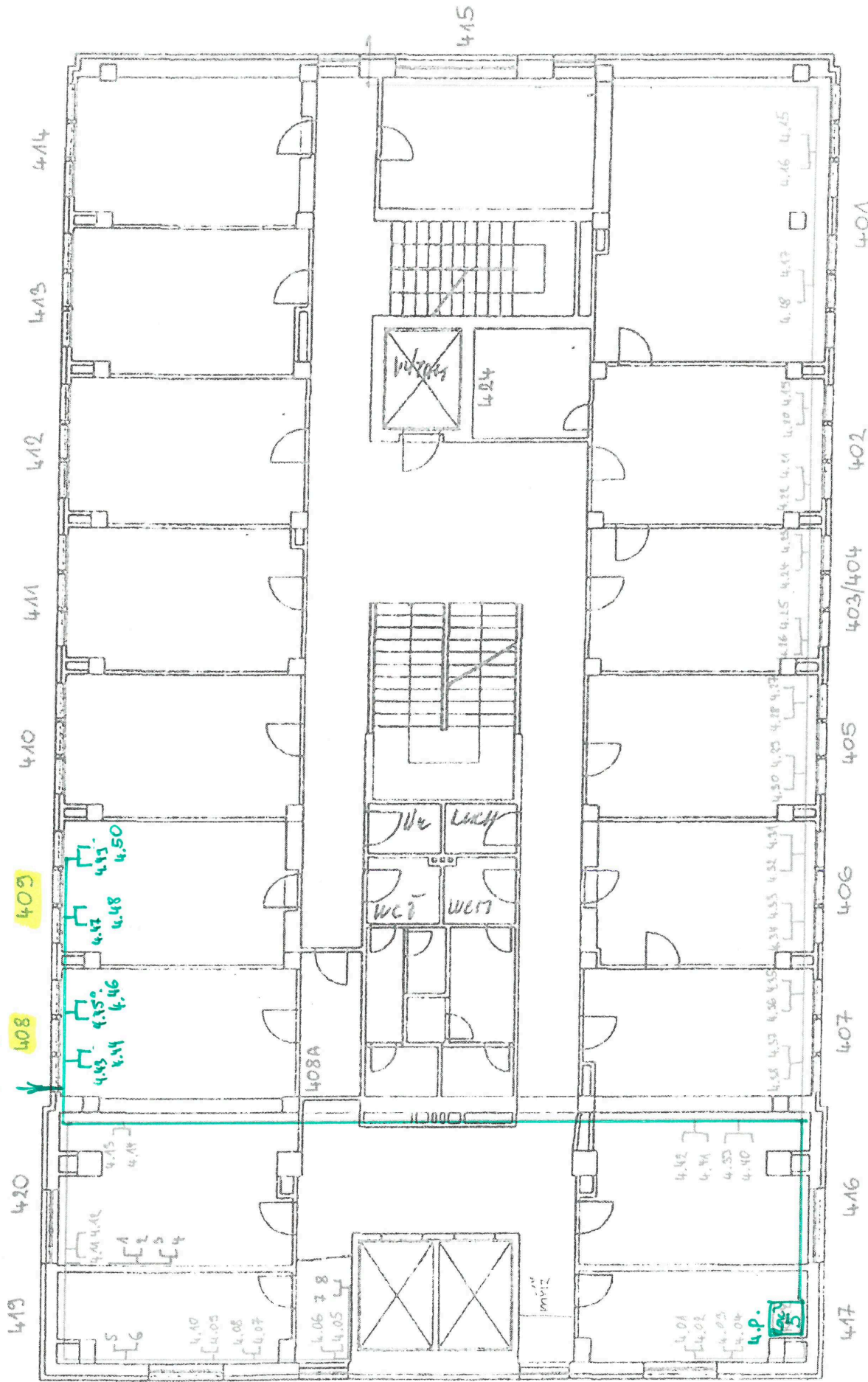
4. NP = 3. patro



4ks dvířní vahy

5. NP = 4. patro

prostup 5.p



-4ks dvojízňové
-2x prostup do 2.p.č. 214
č.č.č.č.

6. NP = 5. patro

practip k. p. i. z. k. 4. 1. 7.
vrak z. 5.

508

501AB 4.51 4.53 4.54



- 2x dvojiznubna