

půda

ch

294/38

305/10

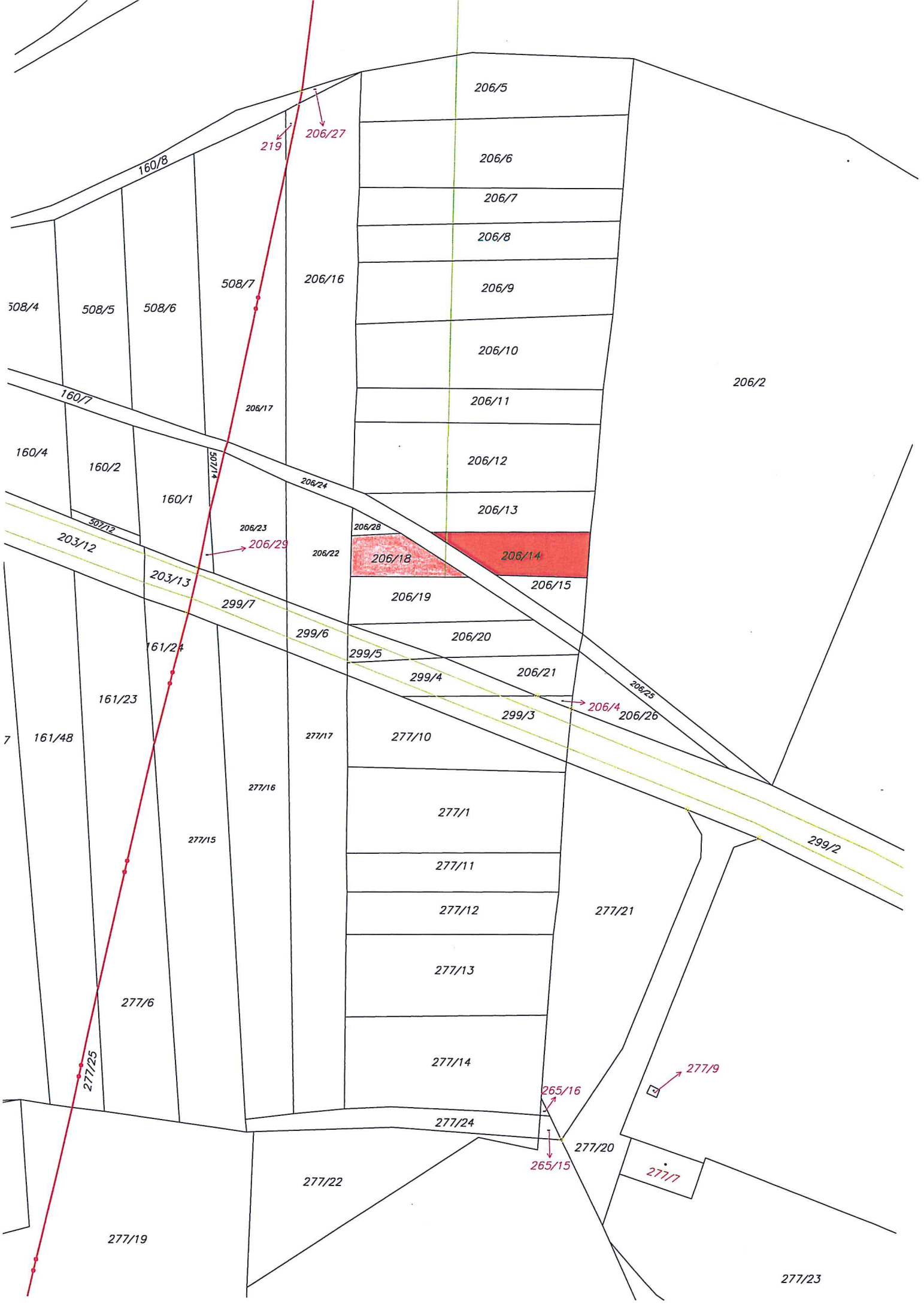
0701/9

travní porost (na

Montamilk, s

302/29

294/35



206/5

206/6

206/7

206/8

206/9

206/10

206/11

206/12

206/13

206/28

206/18

206/14

206/19

206/15

206/20

299/6

299/5

299/4

206/21

299/3

206/4

206/26

277/10

277/1

277/11

277/12

277/13

277/14

277/24

277/21

265/16

265/15

277/20

277/7

277/9

277/22

277/19

277/23

206/2

160/8

508/6

160/1

161/24

161/23

161/48

277/6

508/4

508/5

508/7

160/4

160/2

160/7

203/12

203/13

206/17

206/23

299/7

277/16

277/15

206/16

206/22

277/17

277/22

219

206/27

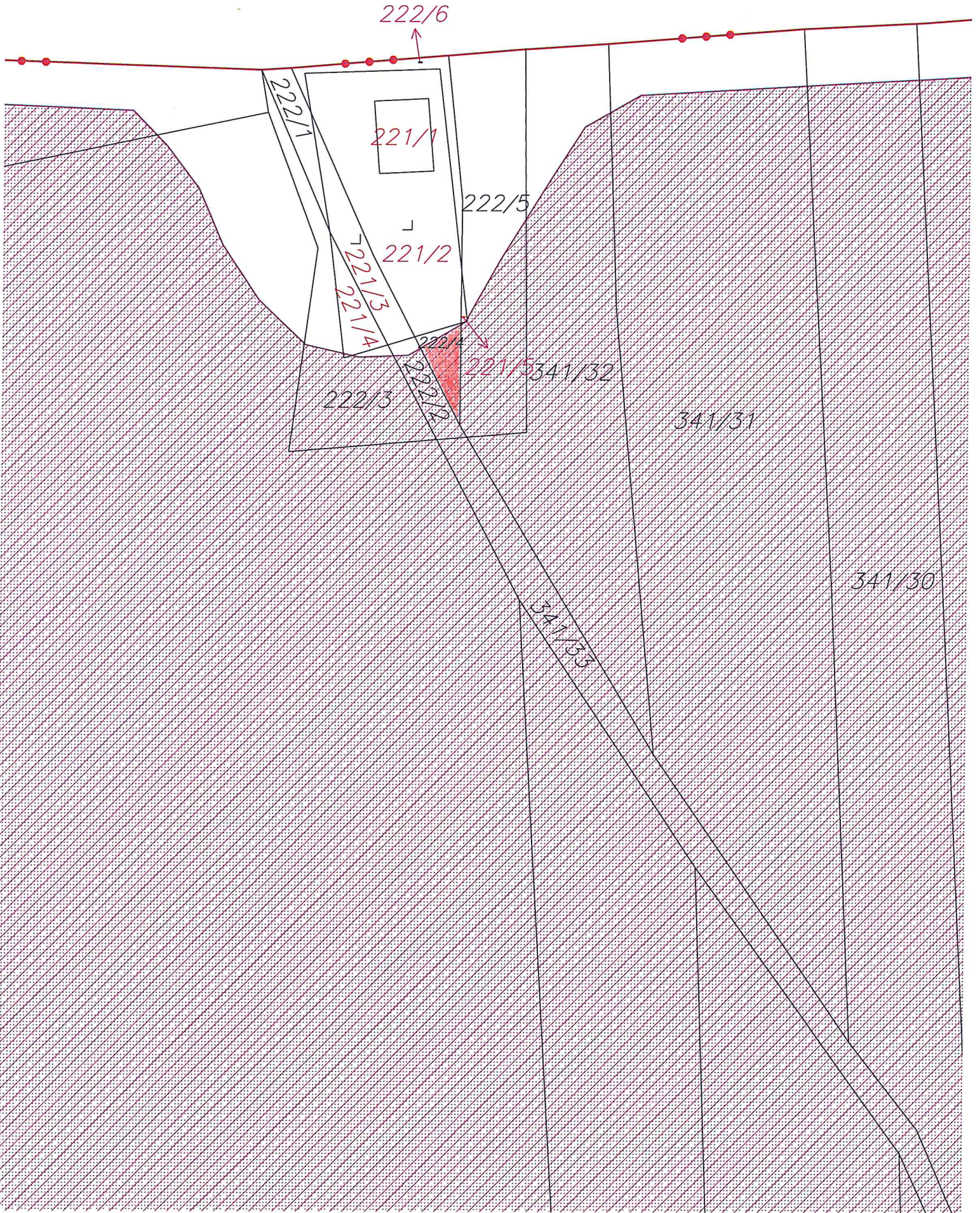
507/14

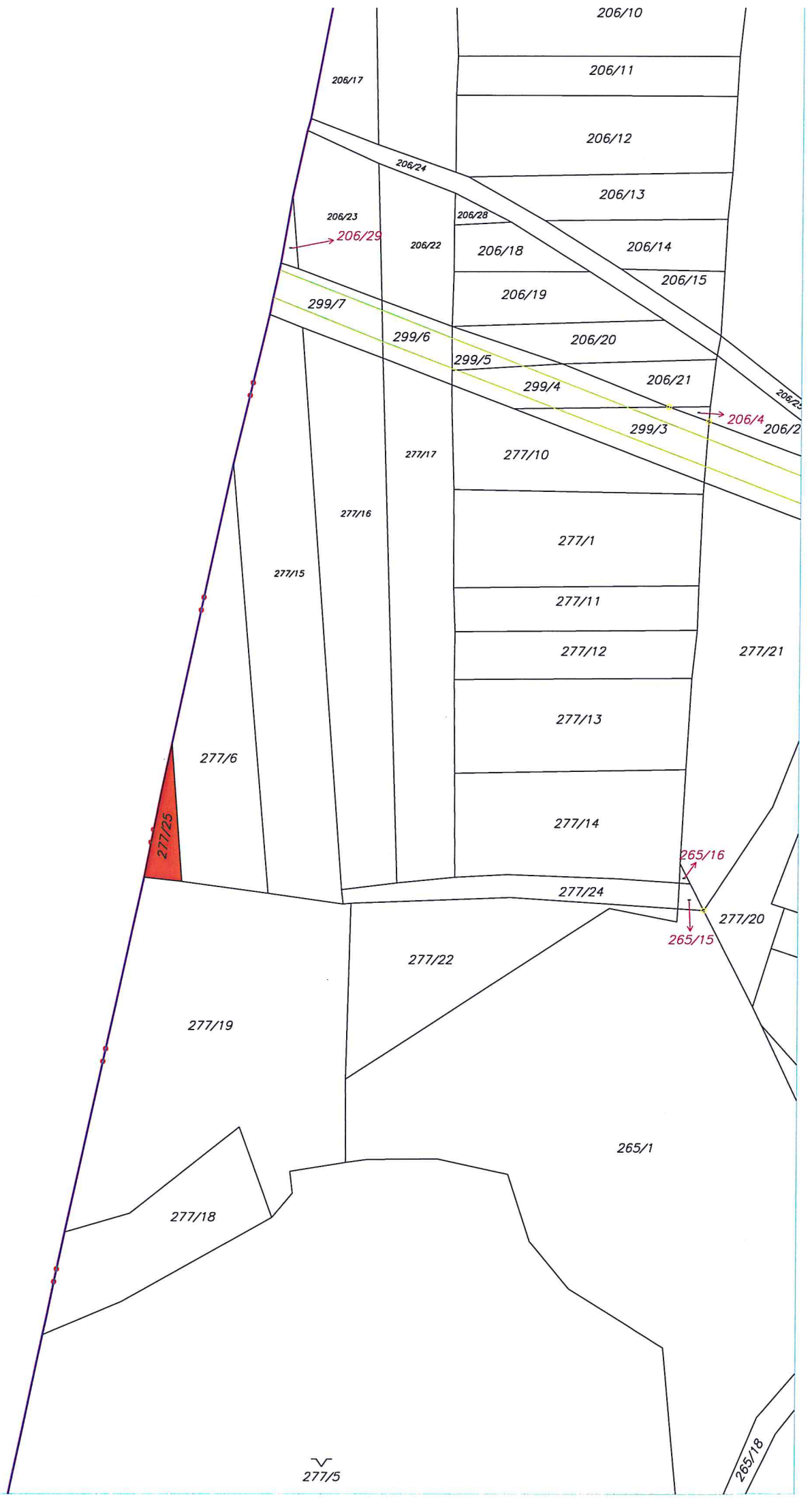
206/24

206/25

299/2

7







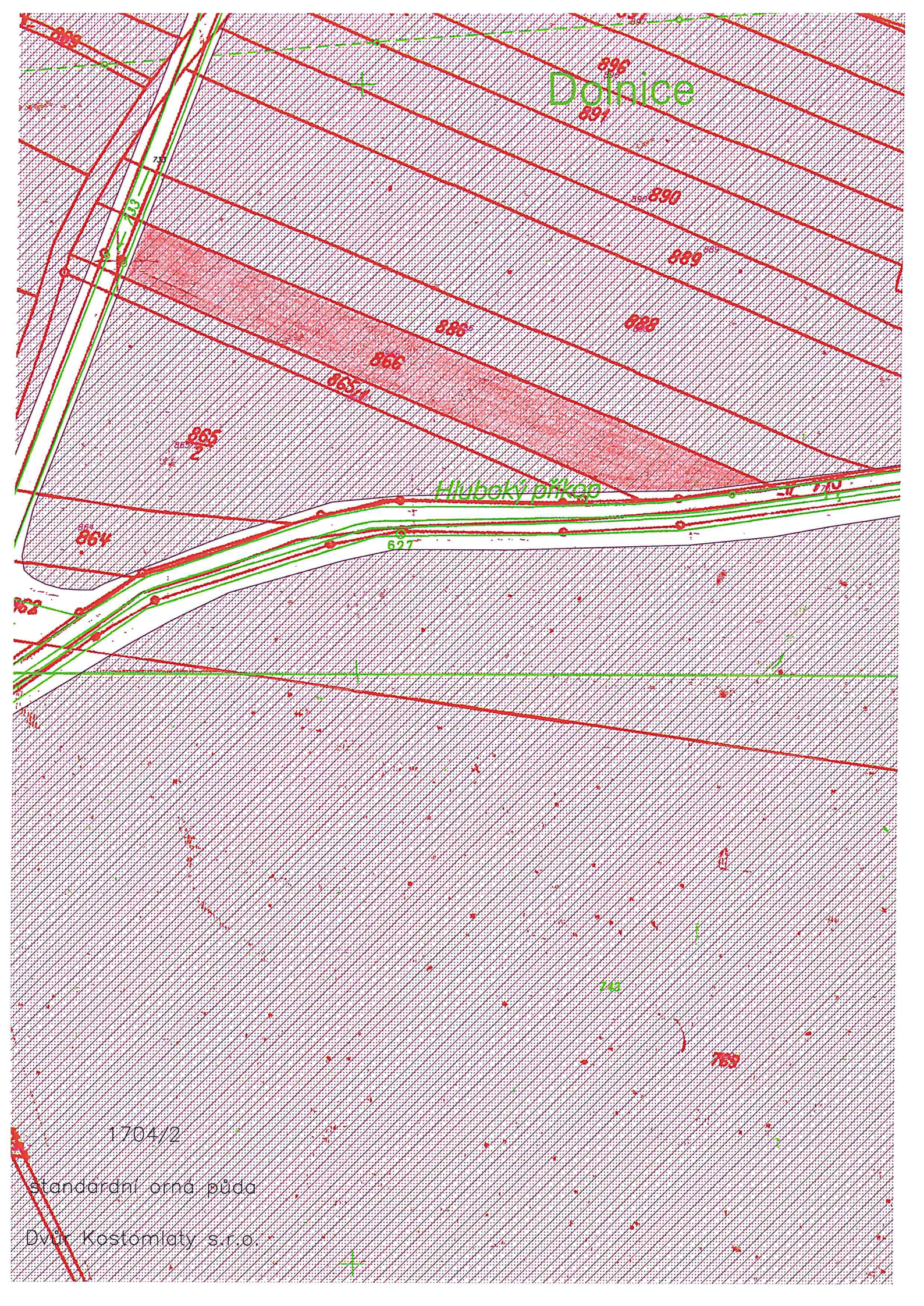
Dolnice

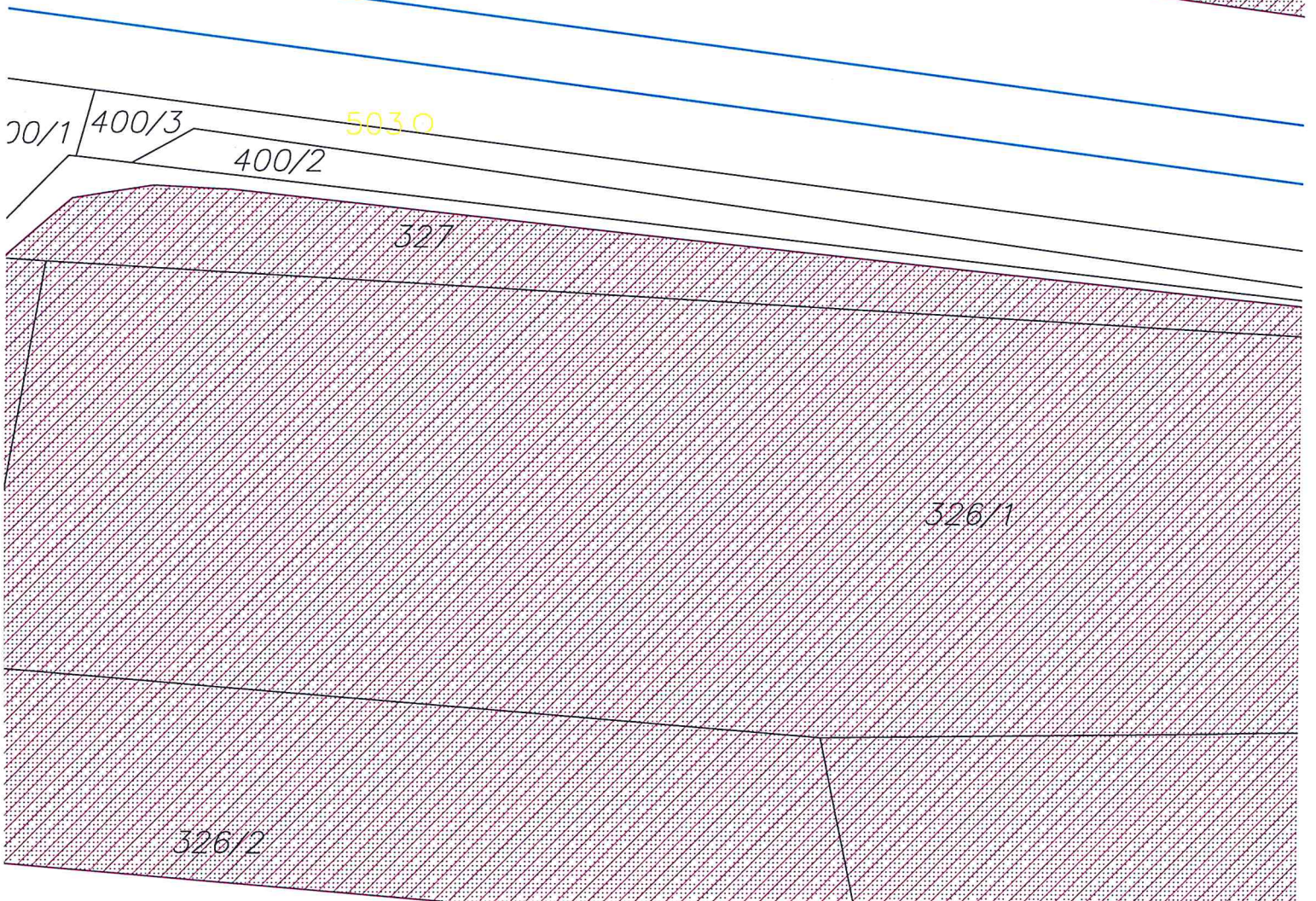
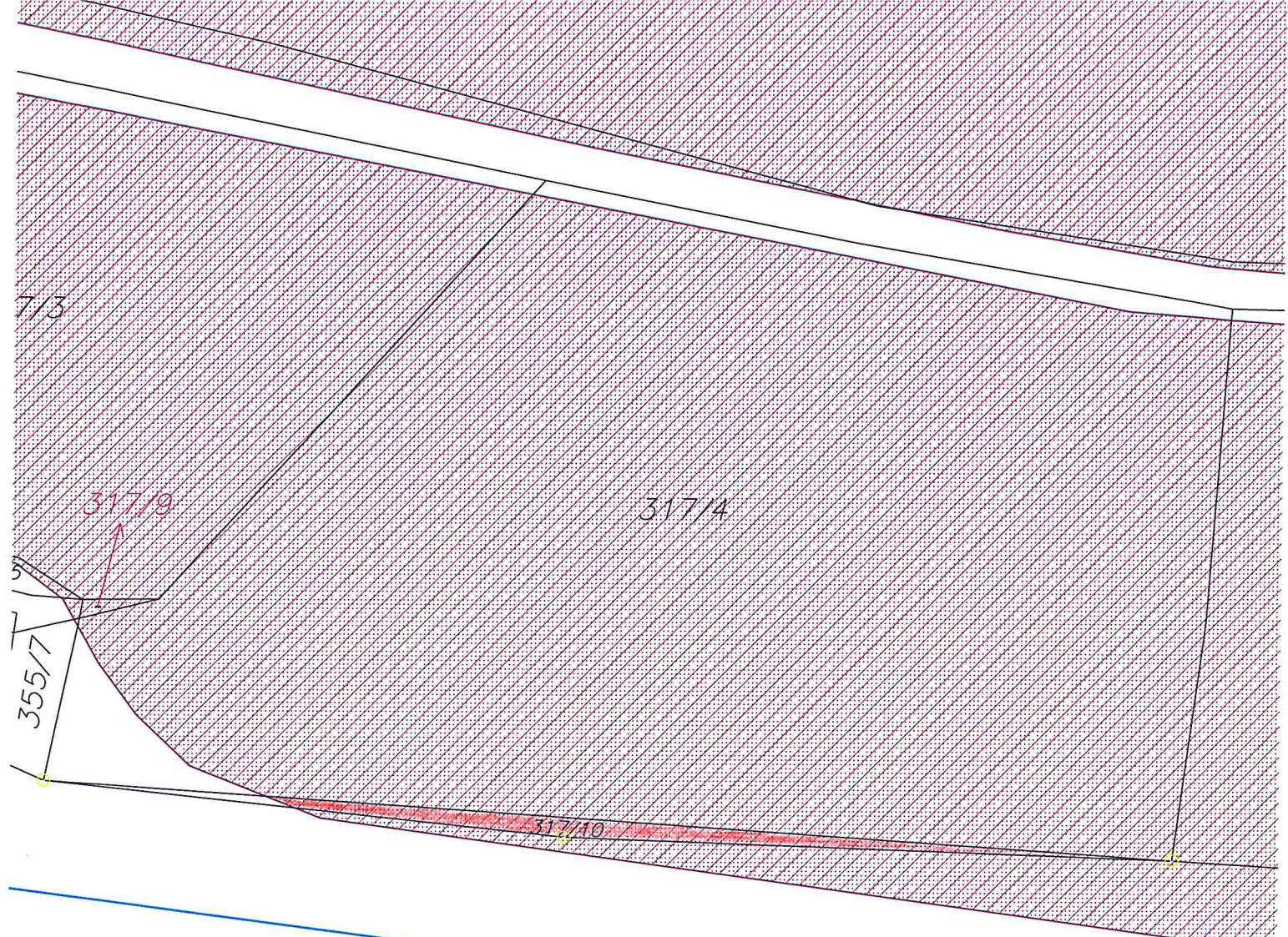
Hluboký příkop

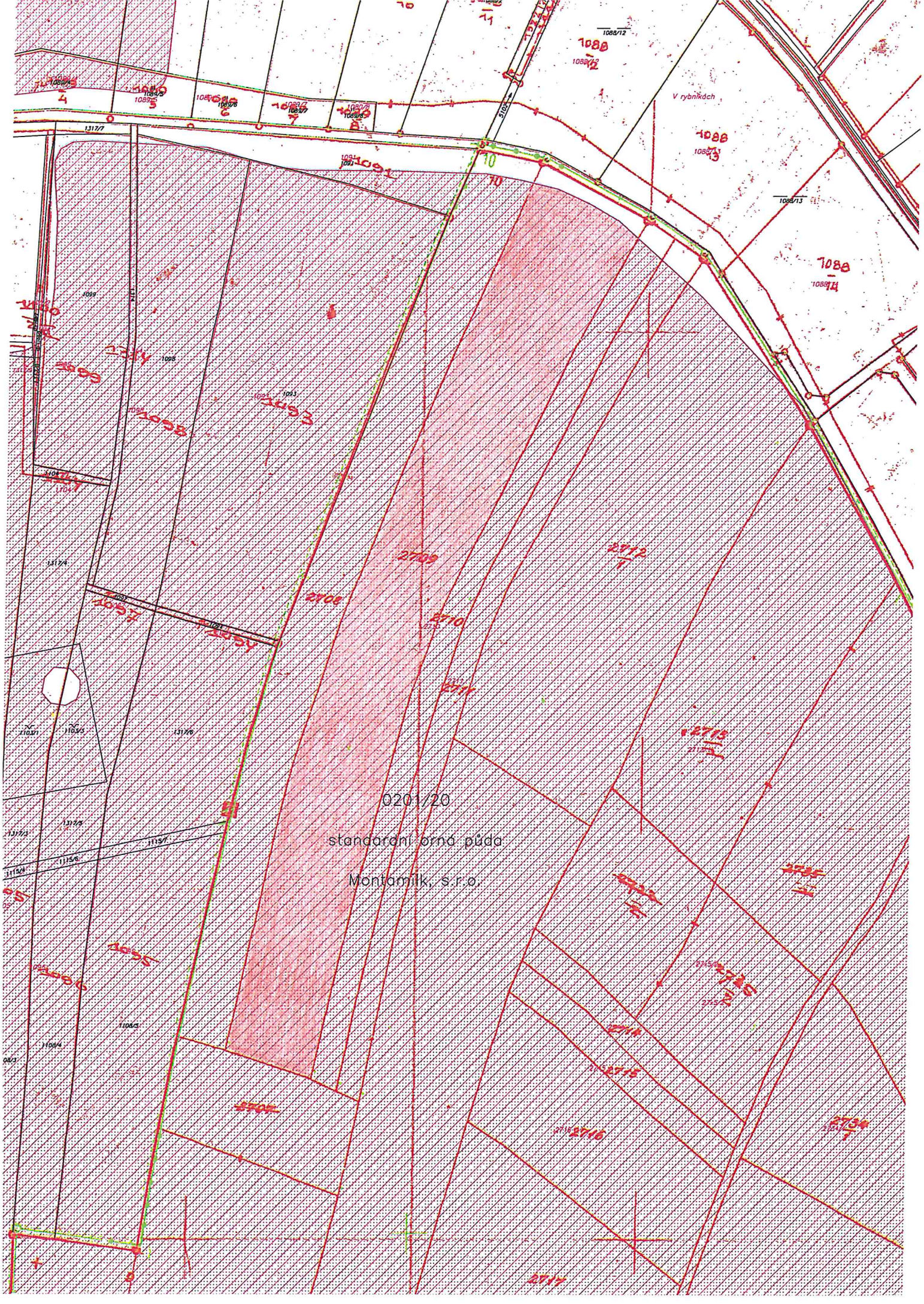
1704/2

standardní orná půda

Dvůr Kostomlaty s.r.o.







0201/20
standardní orná půda
Montamilk, s.r.o.