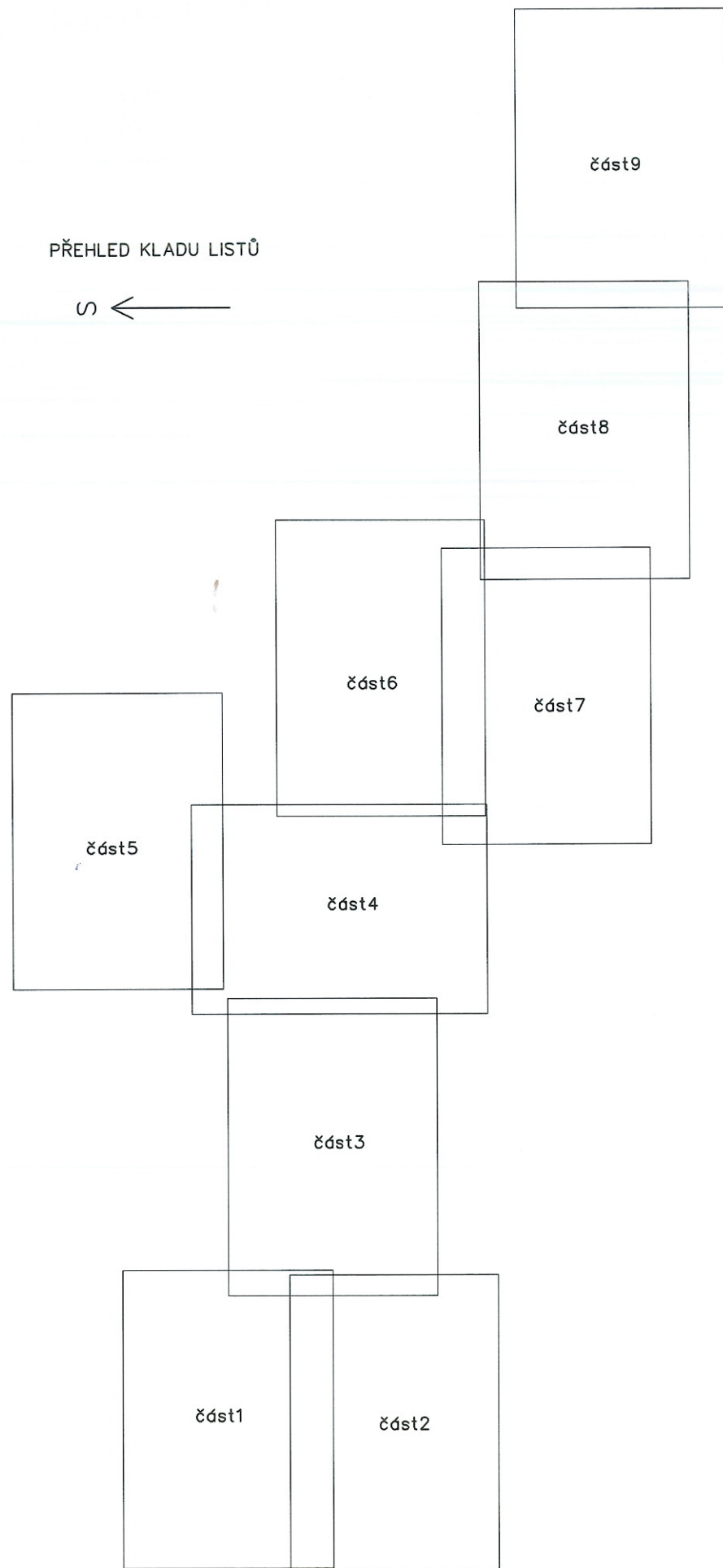
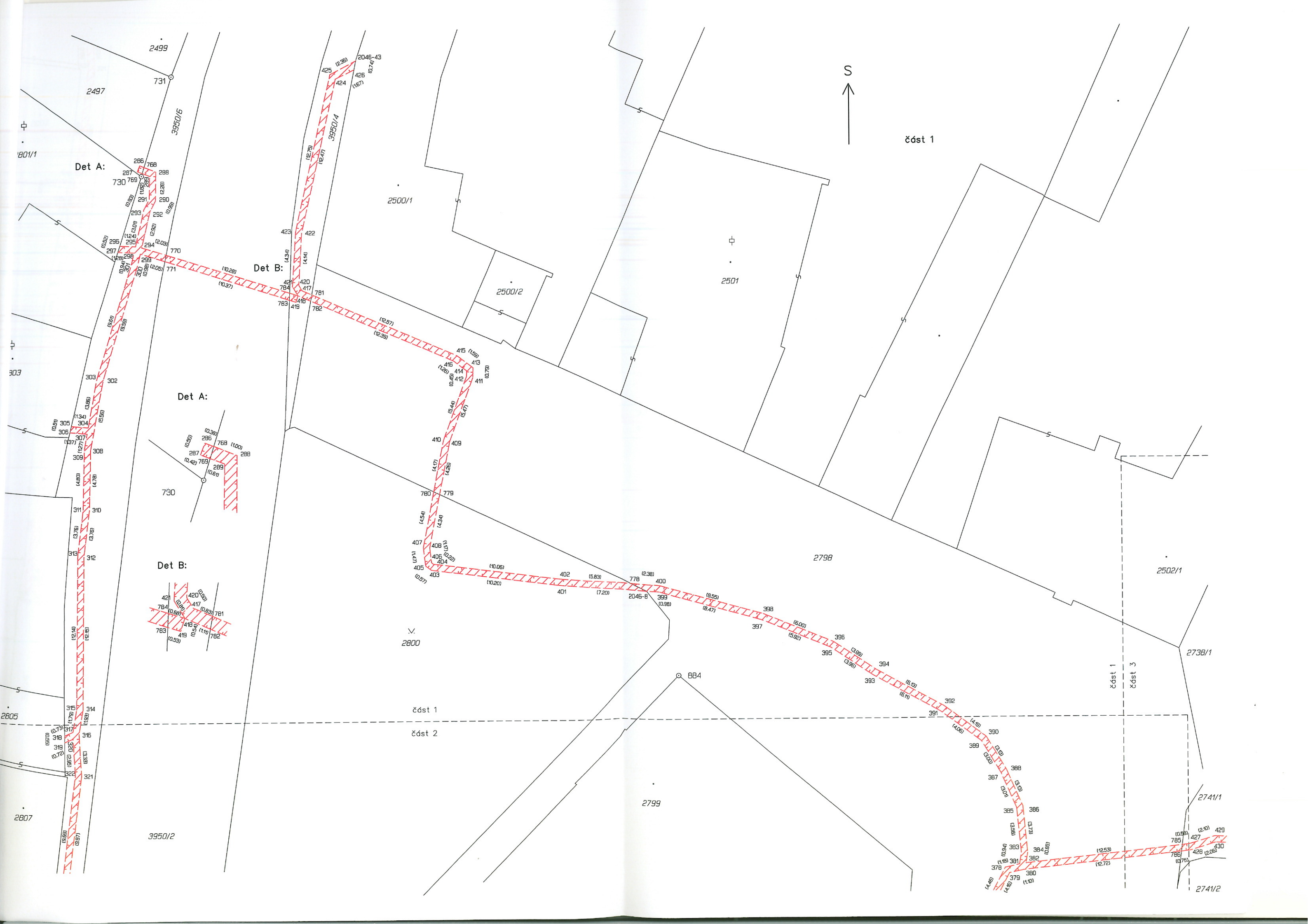
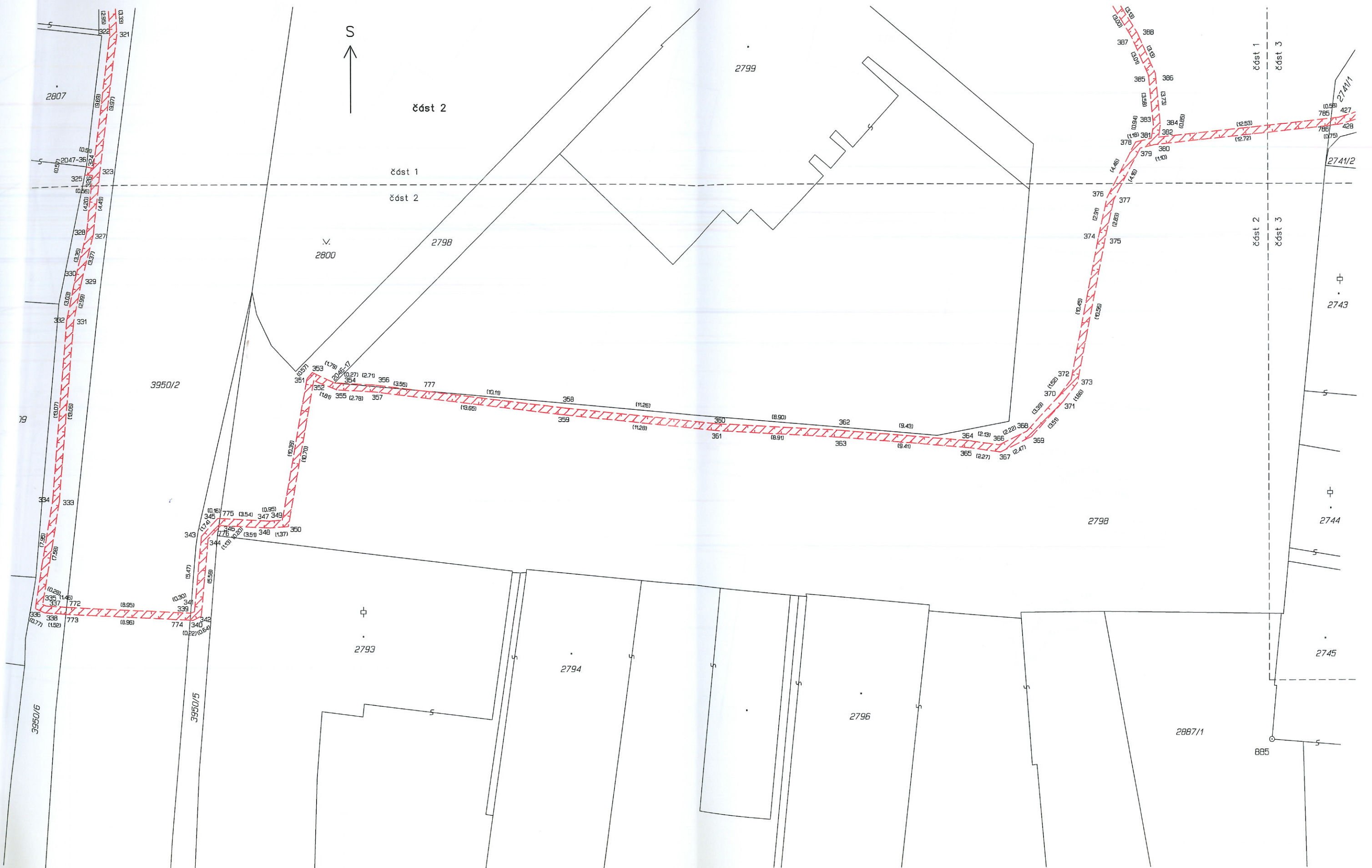


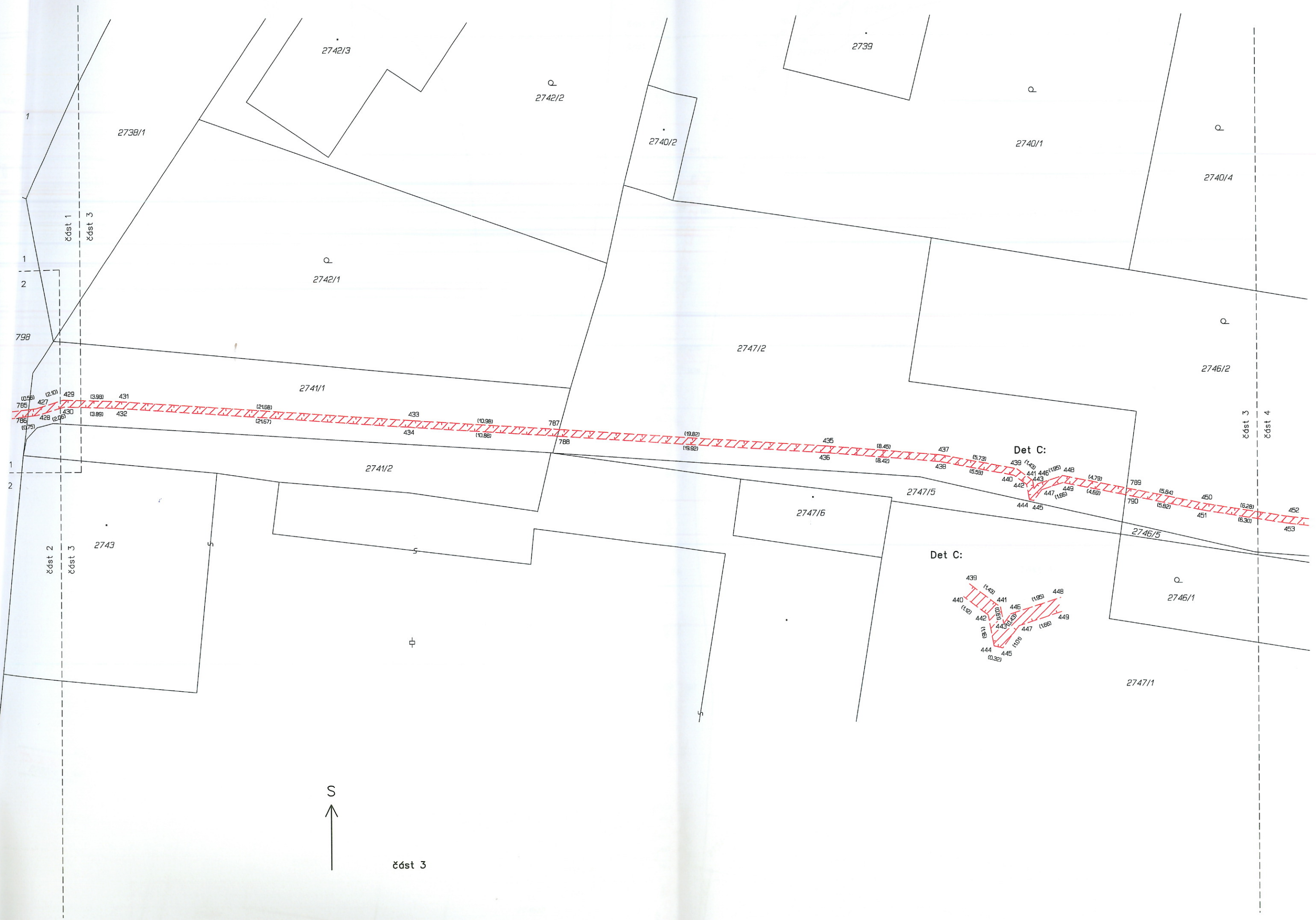
PŘEHLED KLADU LISTŮ

S ←









čdst 3

2738/1

2742/3

Q
2742/2

2739

2740/2

Q
2740/1

Q

2740/4

Q

2742/1

Q

2746/2

2747/2

2741/1

čdst 3
čdst 4

Det C:

2741/2

2747/5

2747/6

Det C:

2746/5

Q
2746/1

2747/1

1

1

2

798

1

2

čdst 1
čdst 3

čdst 2
čdst 3

2743

(0.98) 427
785 (2.10) 429
786 (3.98) 431
(1.75) 428 (2.88) 430
(3.98) 432

(21.68) 433
(21.67) 434

(10.98) 787
(10.88) 788

(19.82) 435
(19.92) 436

(6.45) 437
(8.42) 438

(5.73) 439
(5.59) 440

(1.43) 441
(1.95) 442

(1.95) 443
(1.66) 444

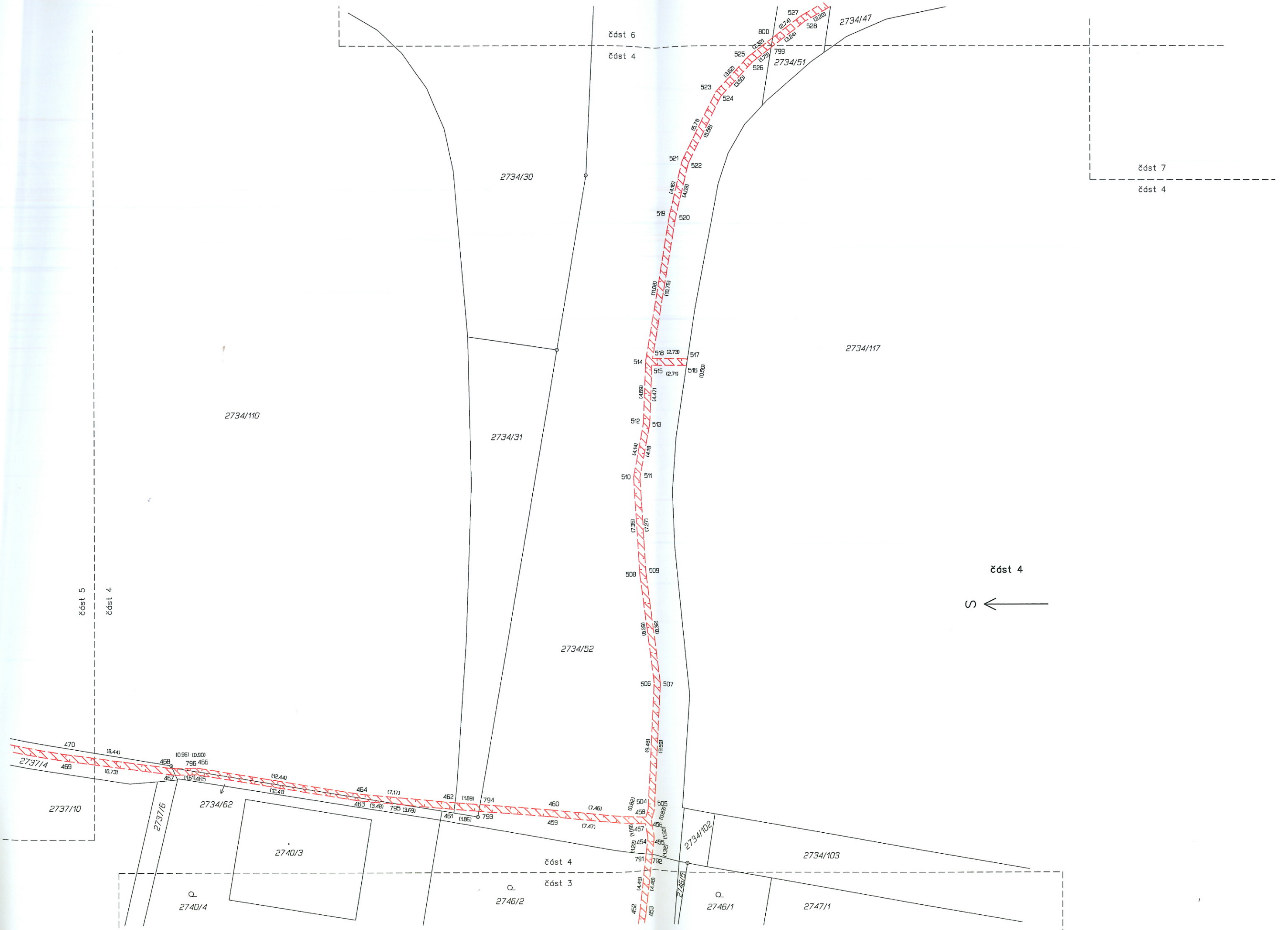
(4.79) 445
(4.59) 446

(5.84) 789
(5.62) 790

(5.28) 450
(5.30) 451

(5.28) 452
(5.30) 453

439 (1.43) 441
440 (1.12) 442
442 (1.95) 443
443 (1.66) 444
444 (0.32) 445
445 (1.95) 446
446 (1.66) 447
447 (1.66) 448
448 (1.66) 449



2554/2 2554/1

2555

2557

2556

L. Kuby

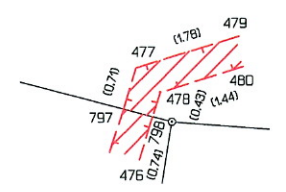
2737/11

2737/1

Det D:

2734/82

Det D:



2737/10

2737/4



část 5

2734/13

2734/110

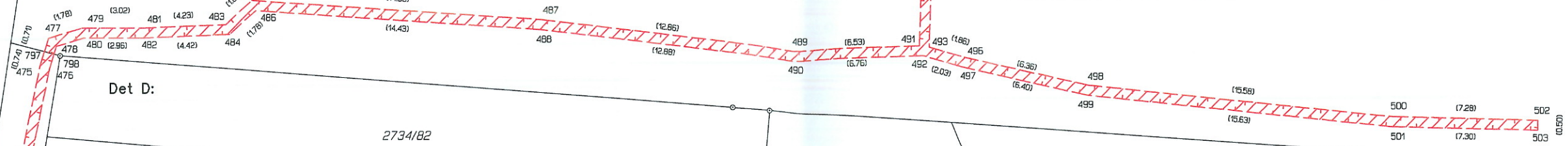
2734/30

část 5

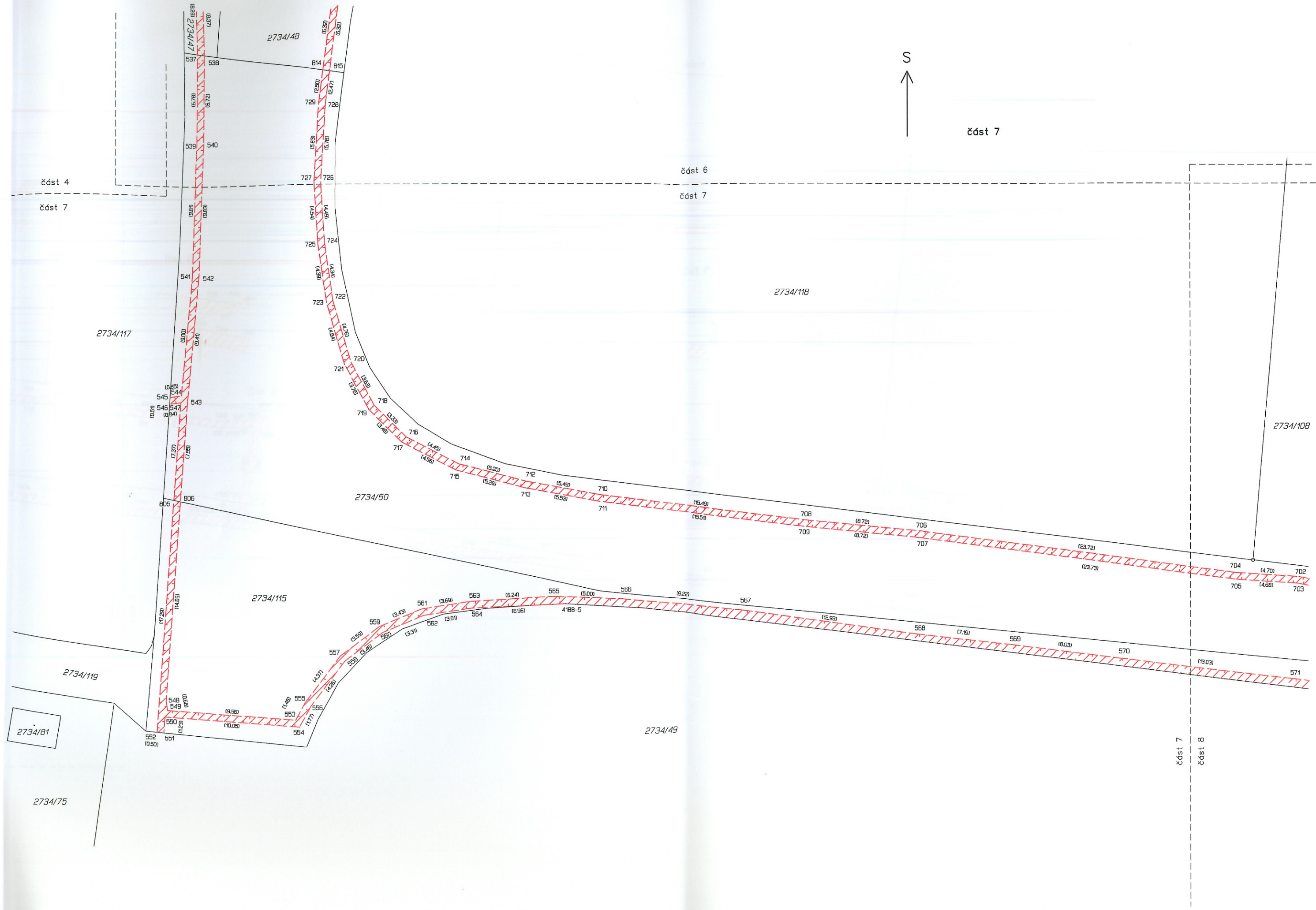
část 4

469 470

500 501 502 503







část 7

část 6

část 7

2734/118

2734/108

2734/50

2734/115

2734/119

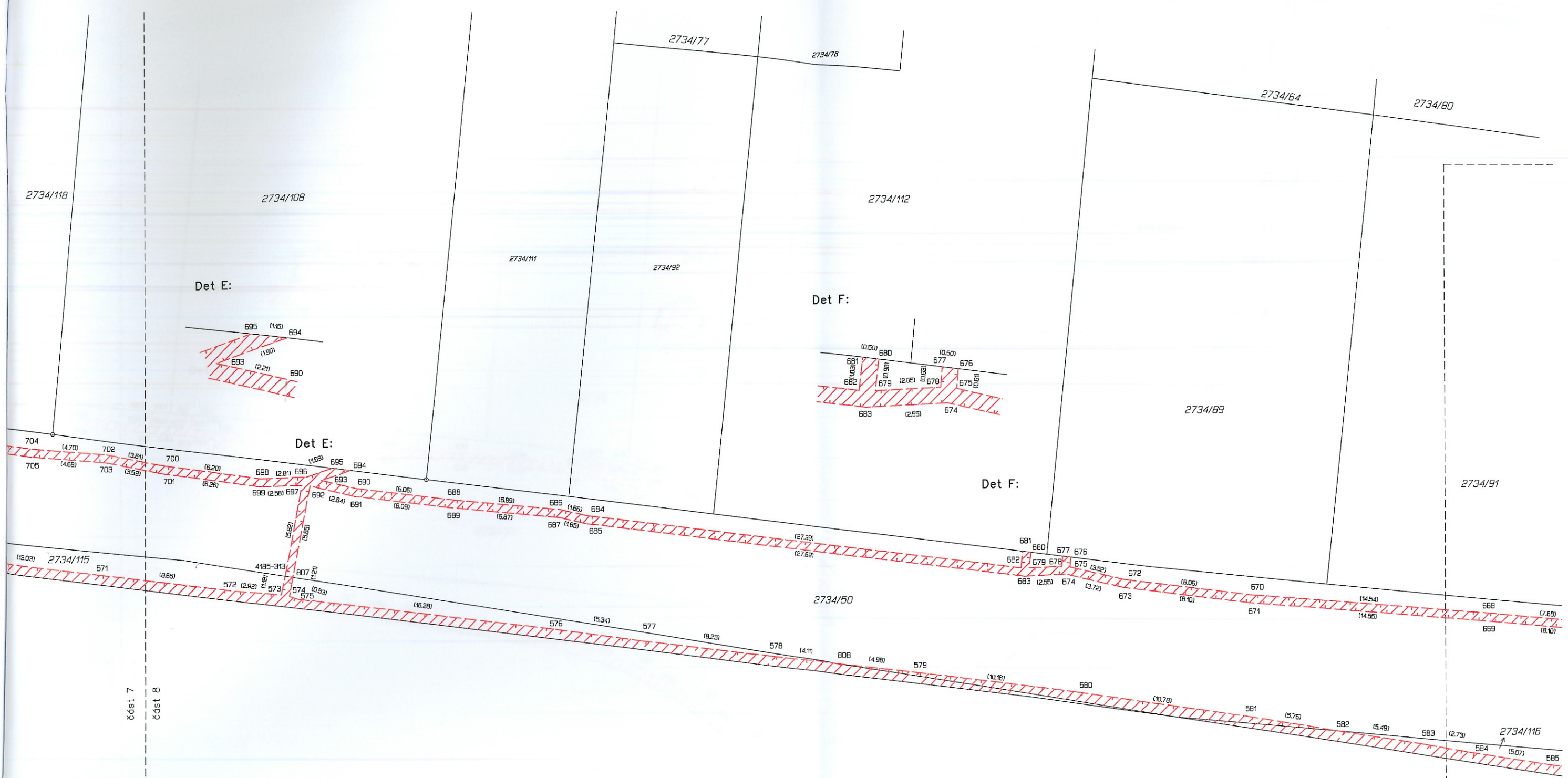
2734/181

2734/75

2734/49

část 7

část 8

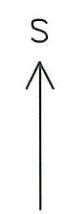


Det E:
695 (1.65) 694
693 (2.21) 690
(1.90)

Det F:
680 (0.50) 677 676
681 (0.50) 679 (2.05) 678 (0.53) 675 (0.51)
682 (0.50) 674 (2.55)

Det E:
698 (2.81) 696 (1.65) 695 694
693 (1.90) 690 (1.60) 688 (5.89) 686 (1.66) 684
692 (2.84) 691 (5.09) 689 (5.87) 687 (1.65) 685

Det F:
681 680 677 676
682 679 678 675 (3.92) 672 (8.06) 670
683 (2.55) 674 (3.72) 673 (8.10) 671 (14.54) (14.56) 668 (7.88) 669 (8.10)



čdst 8

čdst 7
čdst 8

čdst 8
čdst 9



2734/91

2734/90

2734/88

2734/87

2734/86

2734/85

2734/84

2734/26

2734/25

2734/13
2734/15

Det G:

Det H:

Det H:

Det G:

Det CH:

Det CH:

Det I:

Det I:

část 8

část 9



část 9

2734/50

2734/49

2734/116

2734/49

2690/7

2690/8

2734/76

2689/7

2689/16

2734/13

2734/15

2734/26

2734/25

2734/83

Det CH:

Det I:

Det I:

část 8

část 9



část 9

2734/50

2734/49

2734/116

2734/49

2690/7

2690/8

2734/76

2689/7

2689/16

2734/13

2734/15

2734/26

2734/25

2734/83