

АМАДОКА

Sofija Andruchovyč

Divadlo X10 (Theatre X10), www.divadlox10.cz

TRANSLATION Petr Ch. Kalina

DIRECTION, DRAMATISATION, SCENIC DESIGN Dušan D. Pařízek

DRAMATURGY Klára Metge

COSTUMES Kamila Polívková

SCENIC DESIGN AND COSTUME COLLABORATION Magdaléna Vrábová

SOUND AND VIDEO DESIGN Peter Fasching

ASSISTANT DIRECTOR Anna Drápalová

ASSISTANT DRAMATURGE AND PROMPTER Roberta Chrtánská

PRODUCTION ASSISTANT Tereza Farkašová

ACTORS Táňa Malíková, Gabriela Míčová, Stanislav Majer, Václav Marhold, Martin Pechlát

PHOTO Patrik Borecký

DURATION 210 minutes (including a 30-minute interval, performance still runs during the interval)

PREMIERE 1. 4. 2026

A co-production of the Festival Theater der Welt Chemnitz 2026, the Theater Chemnitz and Divadlo X10. Funded by the German-Czech Future Fund and cofinanced by tax funds on the basis of the parliamentary budget of the state of Saxony and by federal funds from the Beauftragter der Bundesregierung für Kultur und Medien (Federal Government Commissioner for Culture and Media), as well as funds from the City of Chemnitz.

The production is being created in co-production with NdB as part of the Theatre World Brno

TECHNICAL CONTACT

Tomáš Sosna, tel.: +420 739 004 823, email: tomas@divadlox10.cz

PR CONTACT

Barbora Koláčková, tel.: +420 775 294 150 email: barbora@divadlox10.cz

All changes and differences to riders have to be discussed with the Theatre X10. Please send us the stage plan, the list of light and sound equipment, and the contact for people who are responsible for sound, stage, and light.

Technical Rider

Setup Time:

- Getting in the venue: at least one day before the day of the first performance day for setup: 10 hours.
- Scenic design setup: 4 hours **(the connection of the water to the waterfall, as well as water pumping must be consulted and taken into account)** - 4 stage techs from the venue.
- Lights and projection setup: 5 hours - 2 light tech from the venue + 1 projection tech from the venue.
- Sound setup: 3 hours - 1 sound tech
- After setup, it is necessary to clean the space.

Rehearsal/Run Through:

- 6 hours.
- The rehearsal has to end at least 5 hours before the beginning of the performance.
- During the rehearsal, 2 stage tech, 1 light tech, 1 sound tech, and 1 projection tech must be present.
- **After the rehearsal, it is necessary to clean the space; It is necessary to spread out the pool foil and let it dry for - at least 3 hours.**

Strike Down:

- Strike down and packing: 3 hours in total, loading 1 hour.
- Set: 3 hours - 4 stage techs from the venue.
- Lights and projection: 2 hours - 2 light tech from the venue + 1 projection tech from the venue.
- Sound: 2 hours - 1 sound tech

1) STAGE

Minimum stage size: 16 m x 12 m x 6,5 m (width x depth x height), background grey / white horizon at least 10 m x 6 m (width x height)

All the drawings/plans are attached.

A consultation is required for the connection of the waterfall to the water, as well as water pumping.

Please note that the performance still runs during the interval, so all the reconstruction happening during the performance is visible to the audience.

2) LIGHTS

- Light console ETC Element 2 – **a consultation is required if there is another console or we can bring our own console.**
- 1x 2000W FHR.
- 7x 1000W FHR.
- 1x 500W FHR.
- 2 x 1000W Flood.
- 8x Elation KL FRESNEL 8 FC
- 6x Cameo Flat Pro 12
- 2x ETC Source Four LED Serie 3 Lustr X8, 25/50
- 1x Source Four Zoom 25/50
- 1x Source Four junior
- 3x Pin Spot – PAR36
- 5x Floor stand
- 4x High light stand
- Hazer.
- The light plot is attached.

3) PROJECTION

- The projection FOH is together with light FOH
- We will bring our own PC with Resolume Arena (HDMI input/output)
- We will bring our own video camera with Hollyland Mars 4K wireless system – **in case that the FOH is more than 20 m or not in the direct visibility to the camera – it is necessary to provide the HDMI connection closer or to the visible spot from the FOH**
- We require front FullHD projector corresponding to the stage – connection to the light FOH
- Grey/white back horizon for projection at least 10m x 6m (width x height)
- We will bring Epson EB-L695SU for the back projection to the waterfall (if you have something similar or stronger, please let us know) – **it is necessary to provide HDMI connection from back horizon to the light FOH**
- 3x overhead projector - we will bring our own

3) SOUND

- Sound console with min. 3-band EQ with parametric mids, compressor on microphone inputs and four effect units (2x hall, delay, chorus).
- 2x stereo in (6.3 jack).
- At least 3x aux for monitoring paths.
- 9x microphone input.
- 3x wireless hand-held microphone set.
- 2x wireless bodypack set with lavalier microphone
- 1x condenser microphone + 1x small microphone stand.
- High-quality sound equipment corresponding to the space - in the configuration: 1x L&R with subwoofer (ideally on aux) + 3x monitor.

Input list:

- PC1/sound card - L&R.
- PC2/sound card - L&R.
- 1x stereo in from light FOH
- 3 x hand microphone
- 2 x port
- 2 x condenser microphone

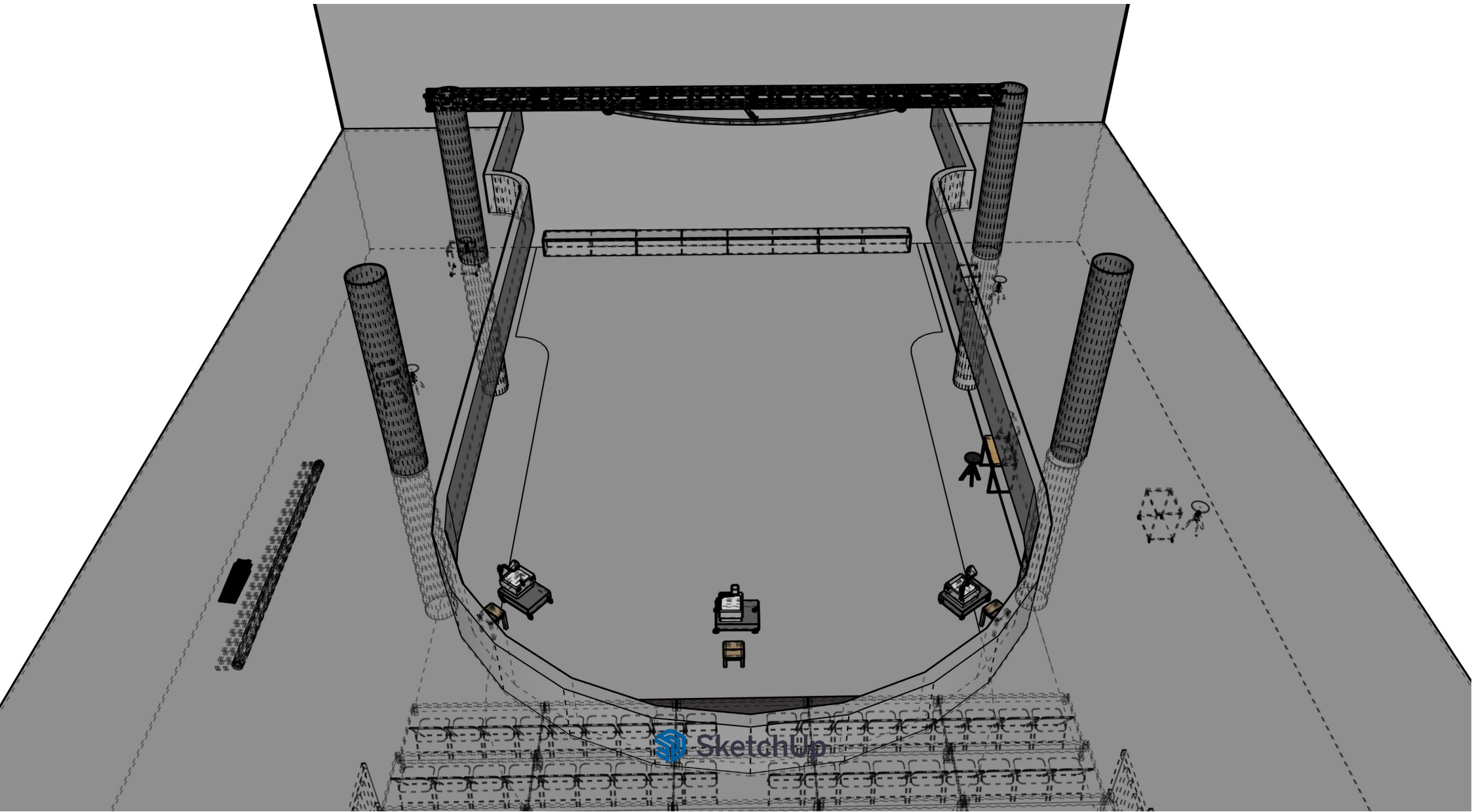
4) SURTITLES

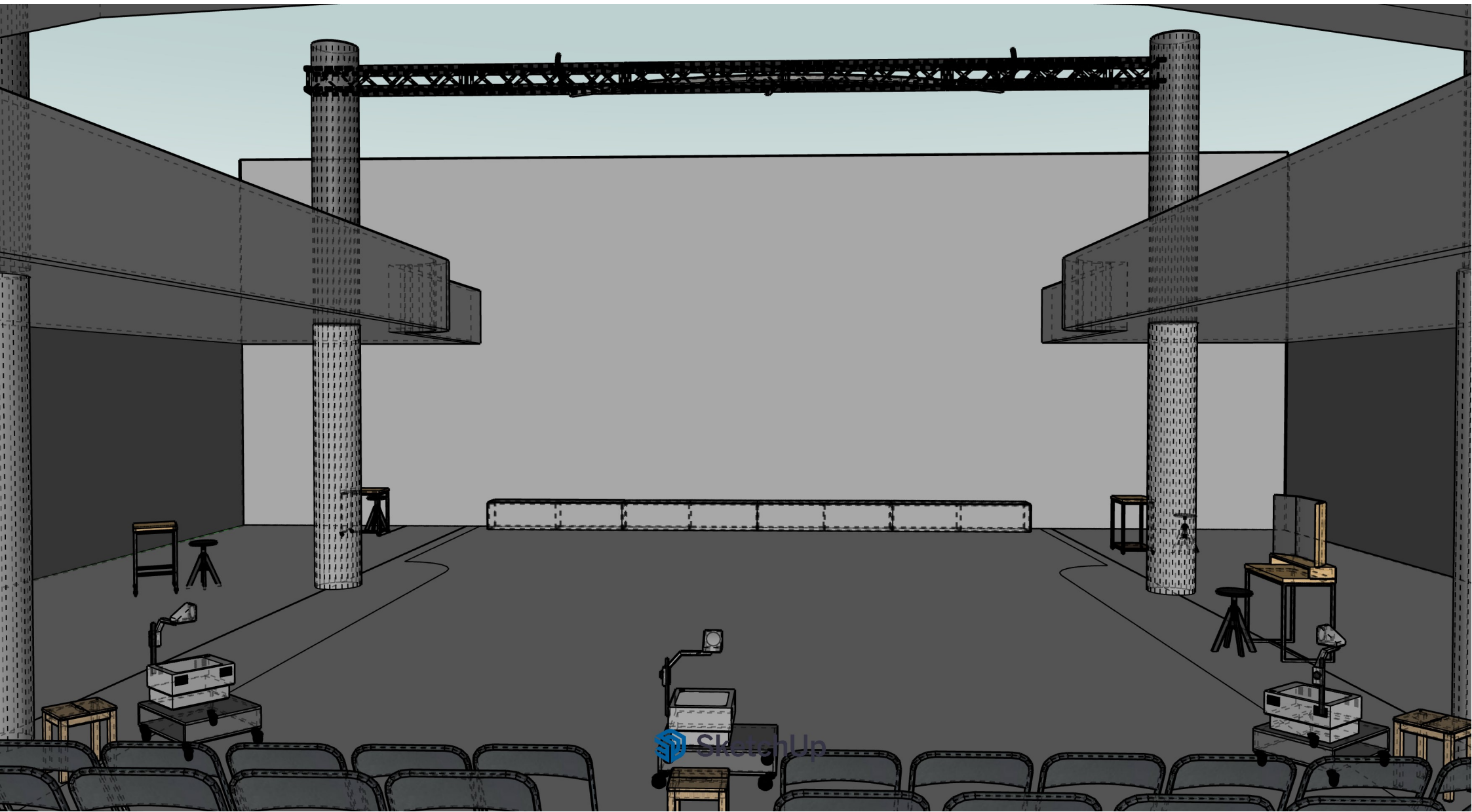
Projection/screening of surtitles has to be discussed.

Best possibility is to project them to the back horizon.

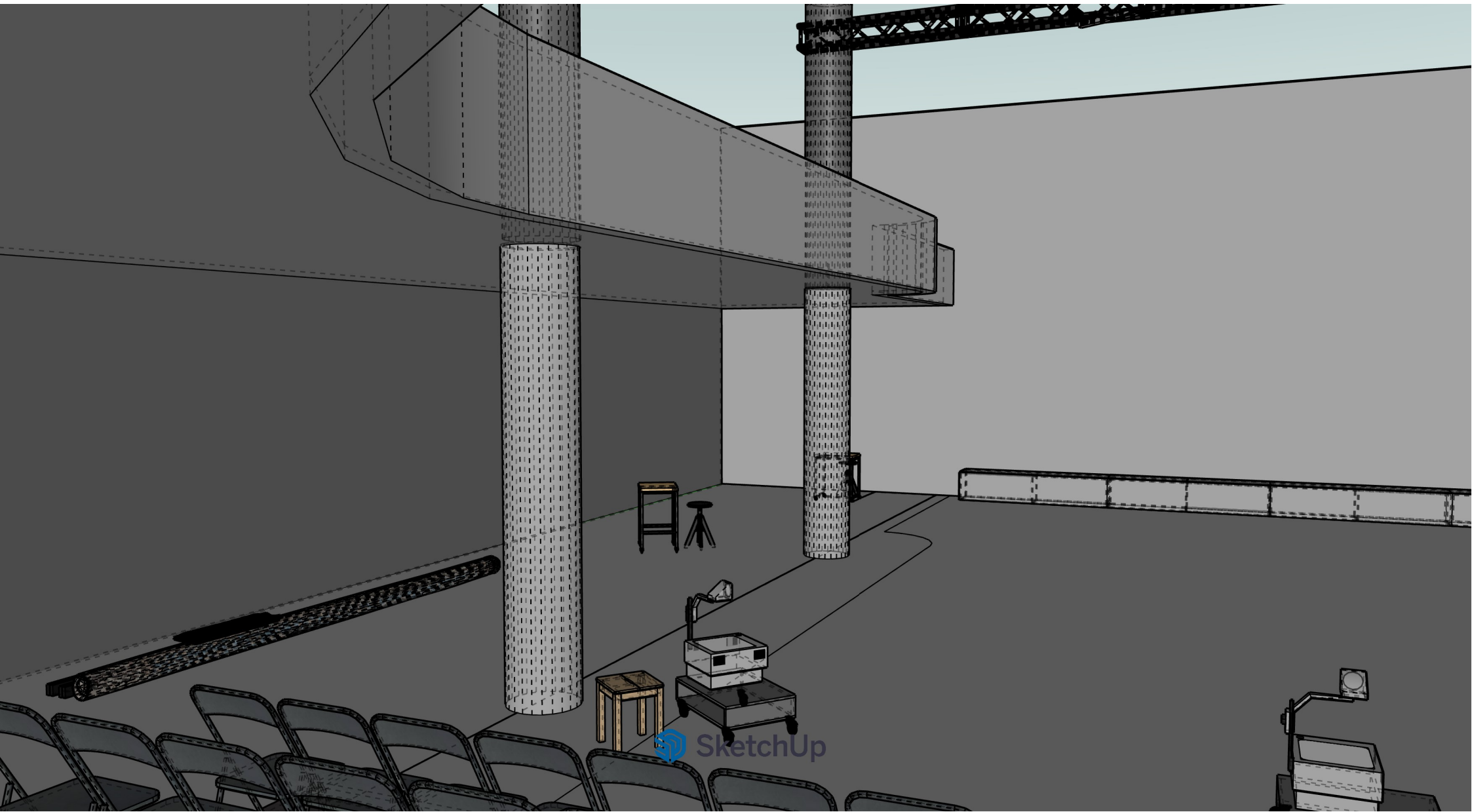
5) OTHER REQUIREMENTS:

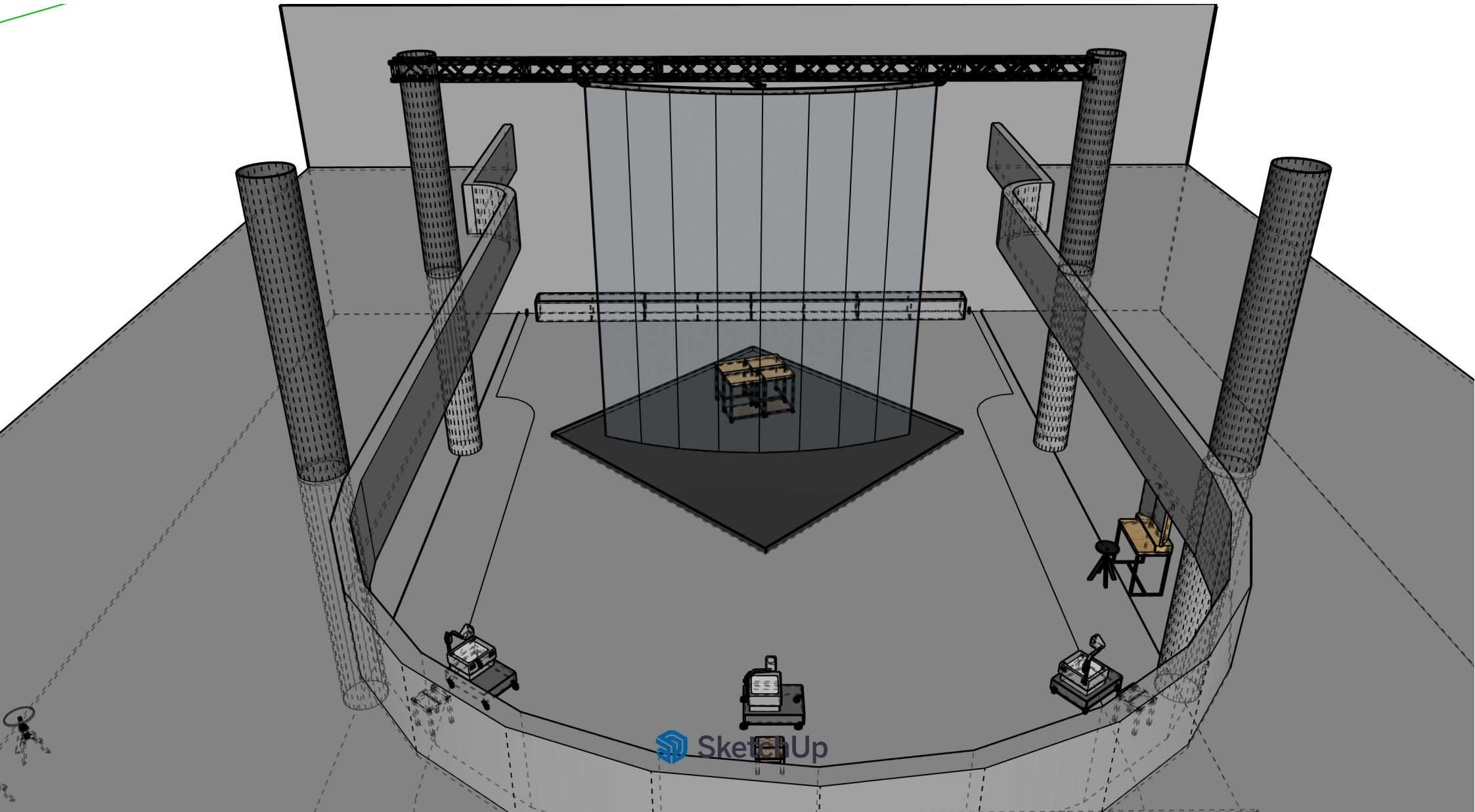
- Actors: separate women's and men's dressing rooms with showers and toilets.
- Dressing room for the technical crew.
- Refreshments - water, coffee, fruits, snacks.
- **Secured parking spots next to the venue or nearby - 1 van with the trailer + 1 van**



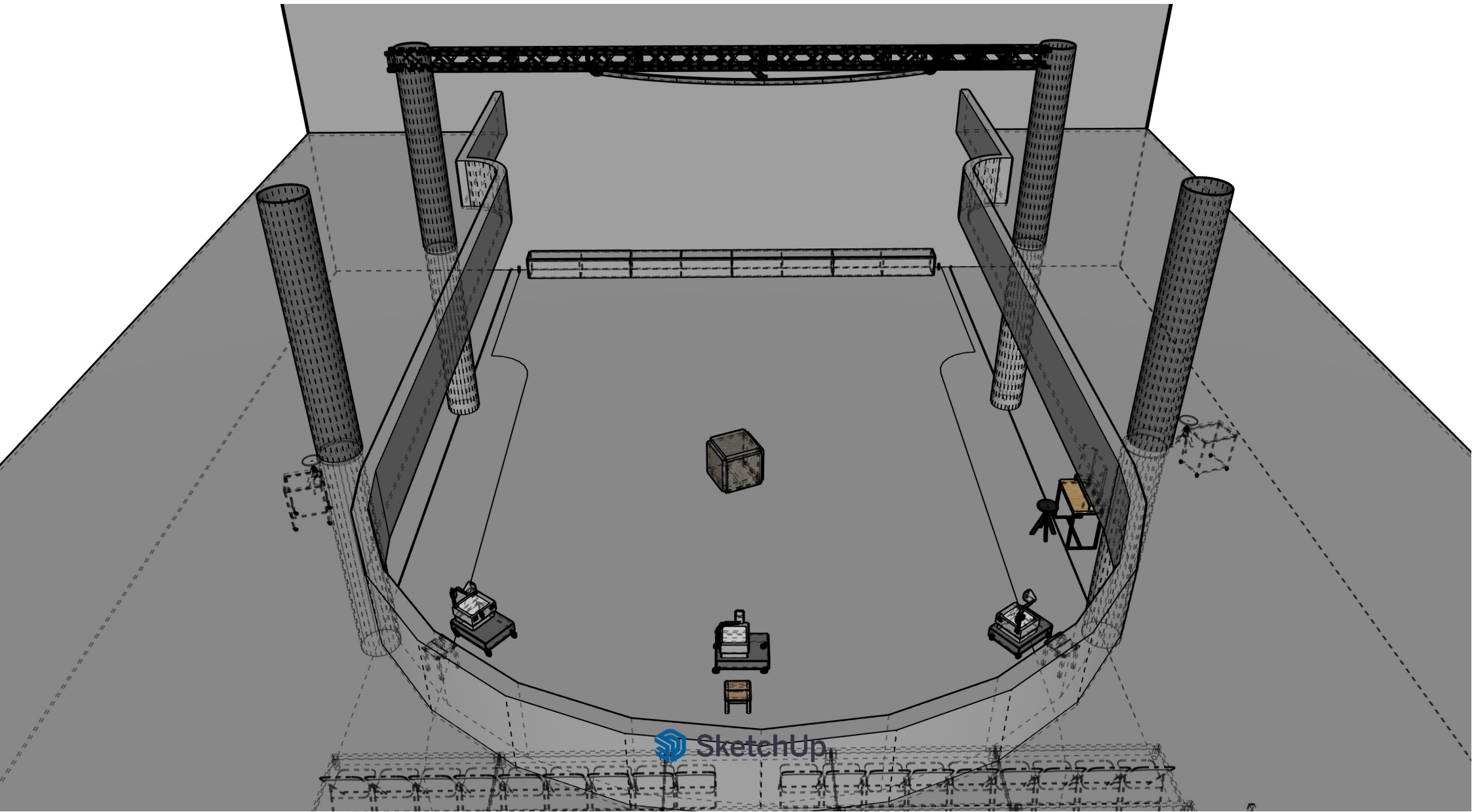


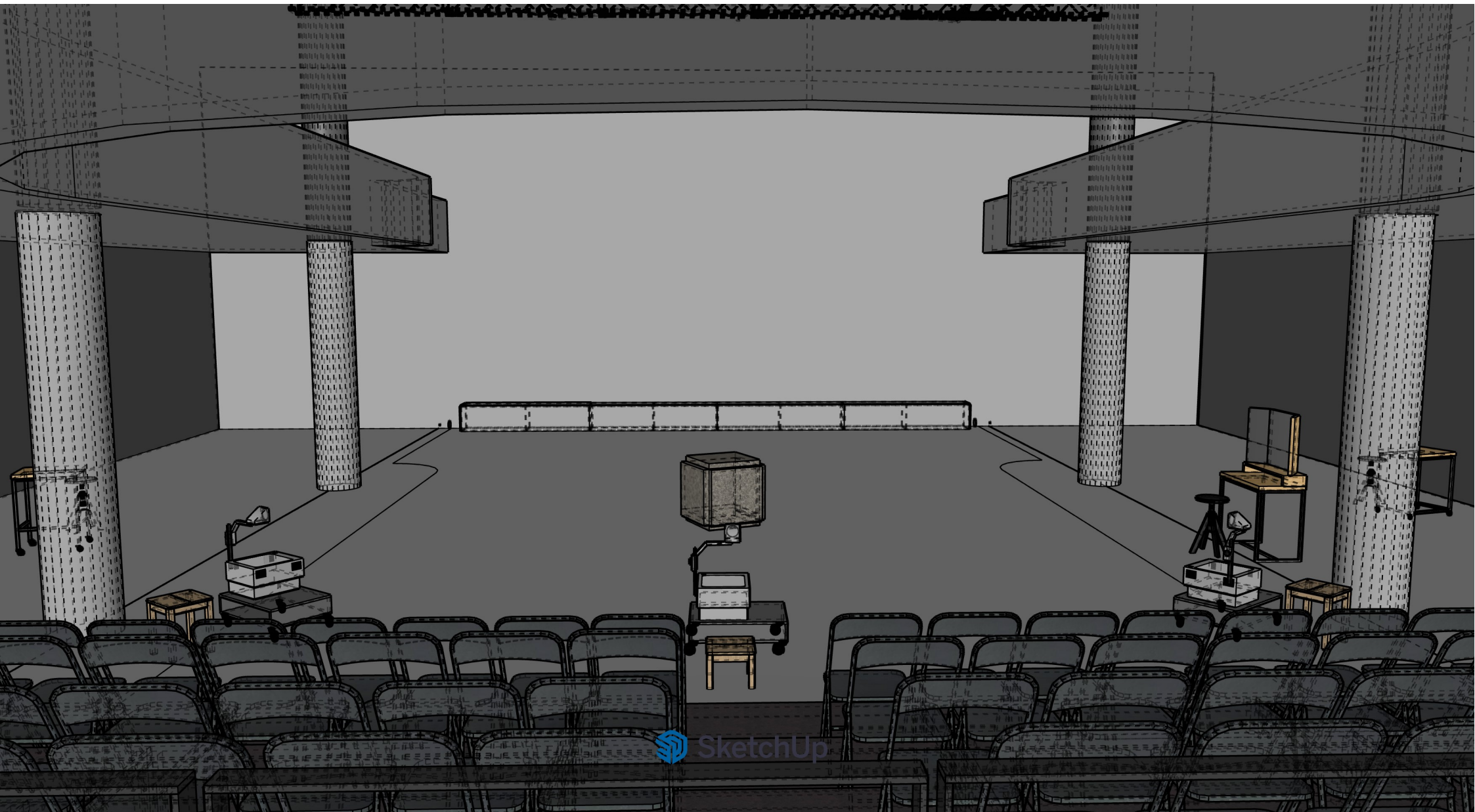
SketchUp

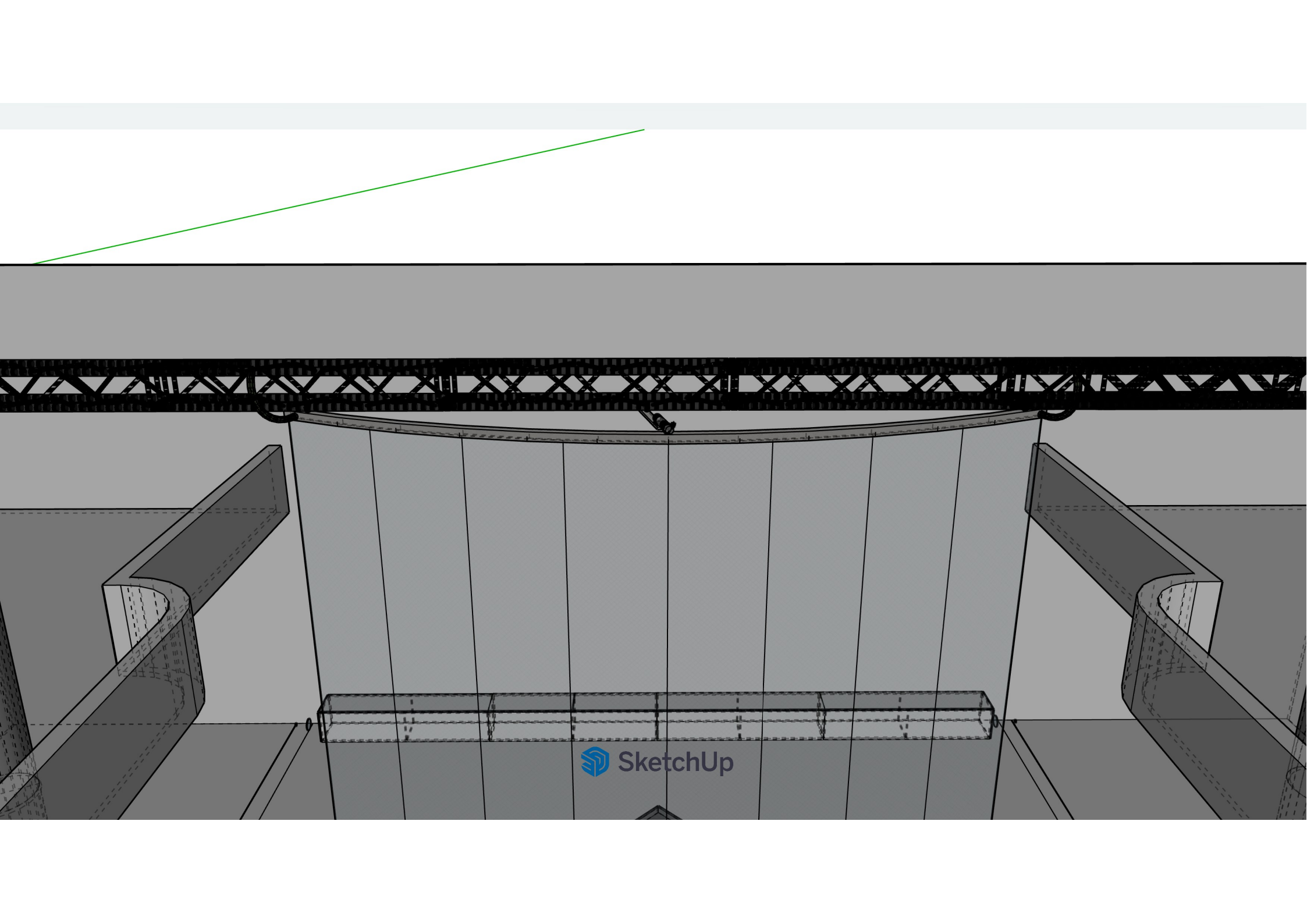




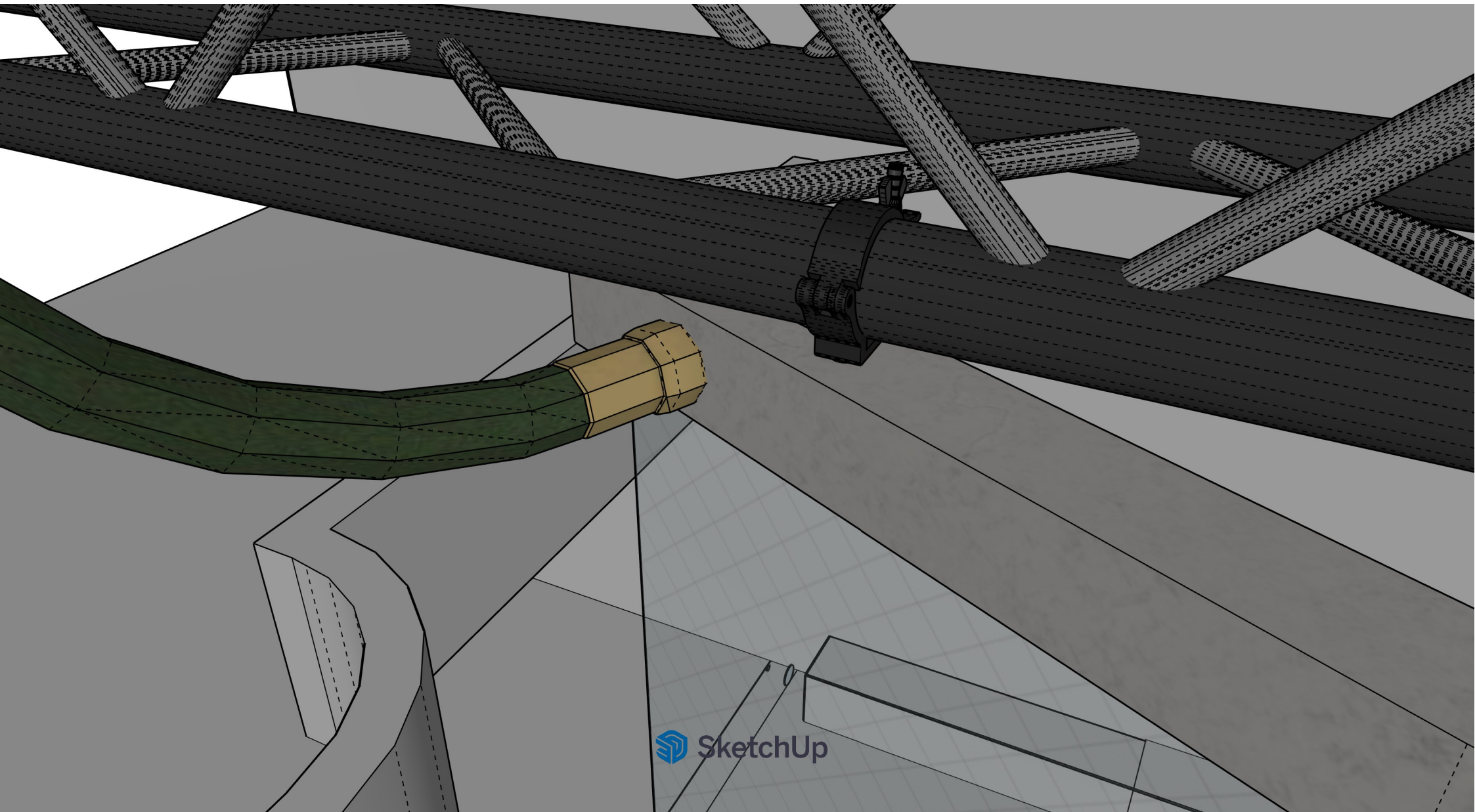


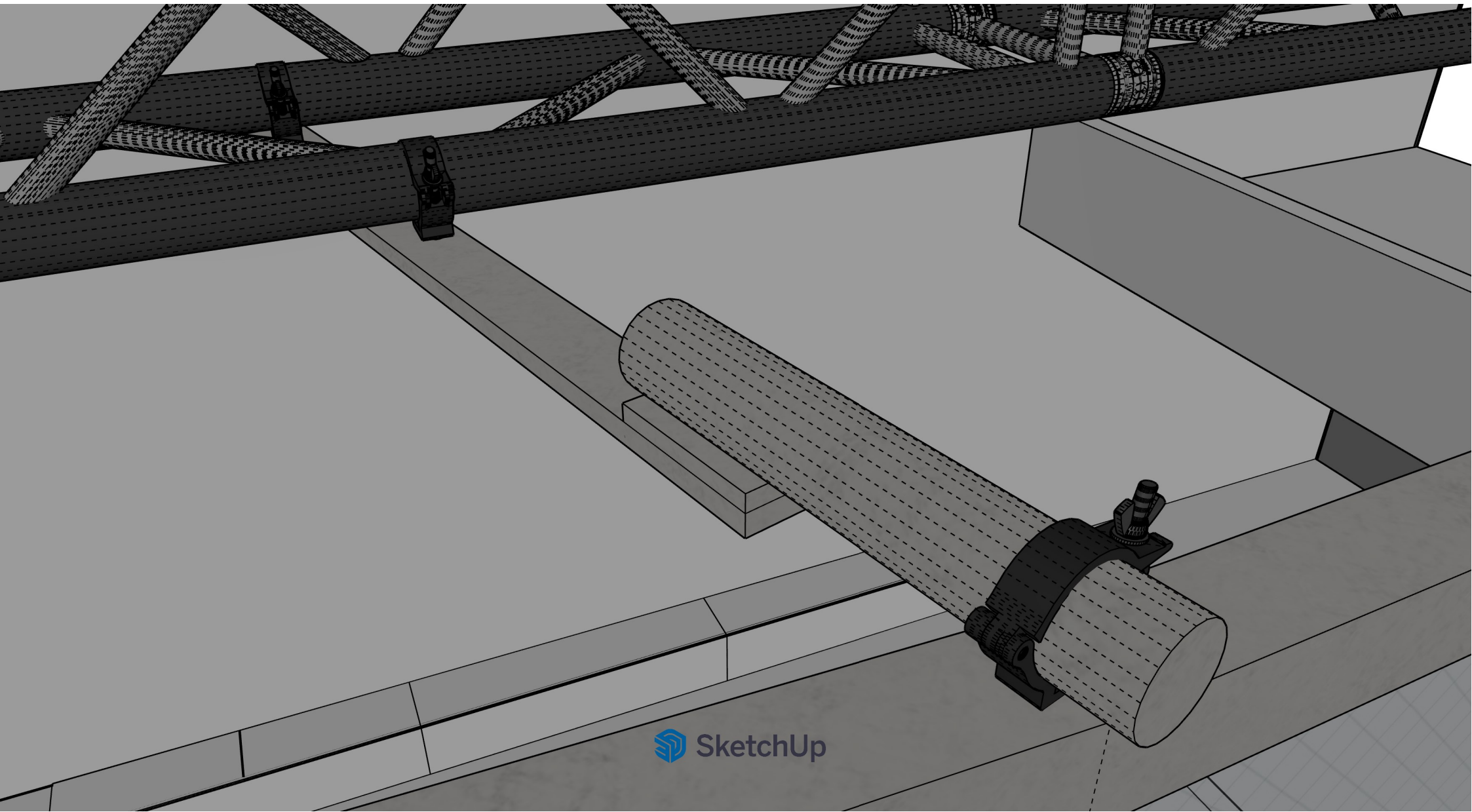






 SketchUp

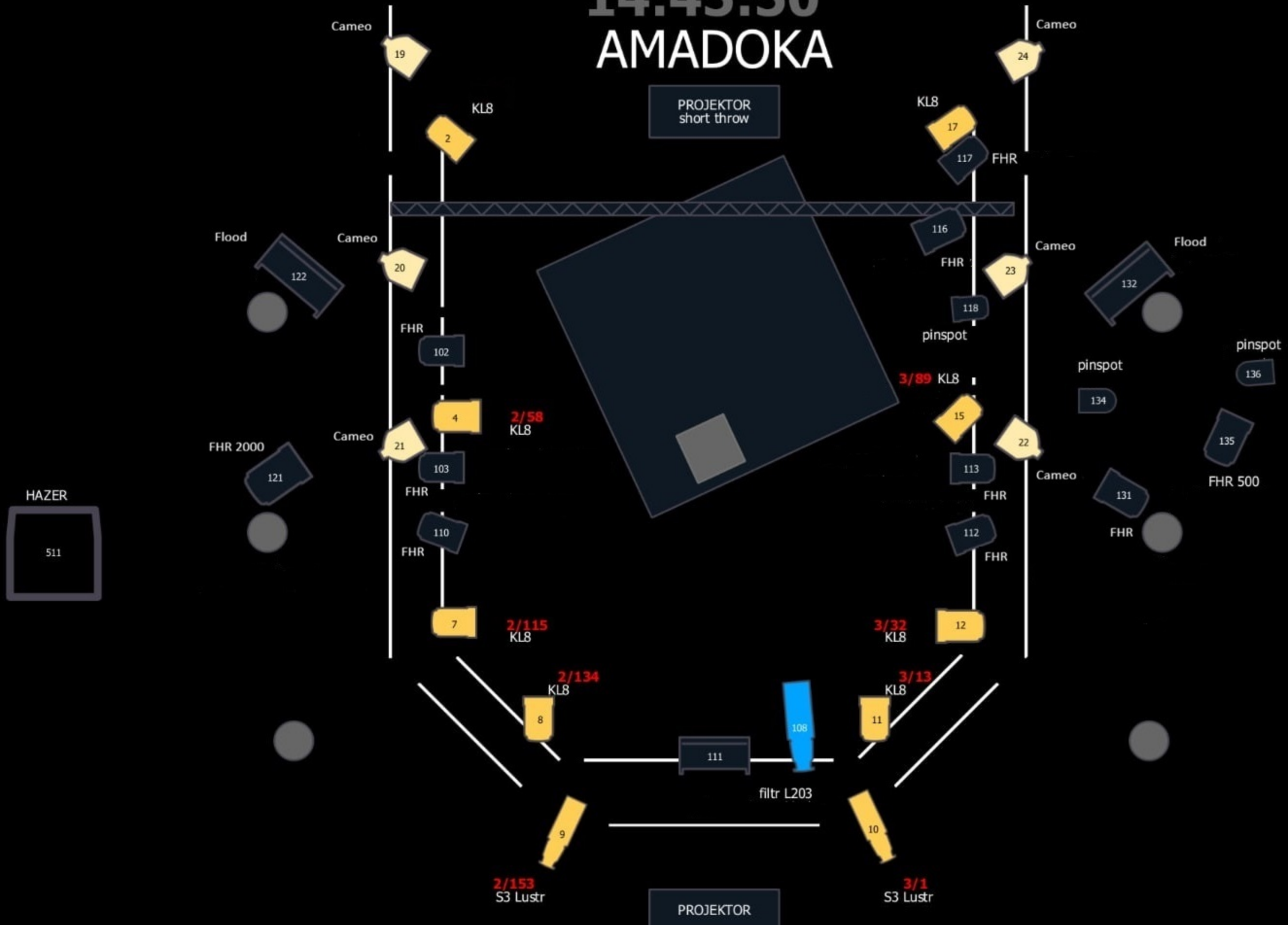




SHUTTER
100

14:45:50
AMADOKA

PROJEKTOR
short throw



CLEAR ALL

MASTER A

379

380

CLEAR

M

381

382

CLEAR

M

386

387

CLEAR

M

391

392

PROJEKTOR

