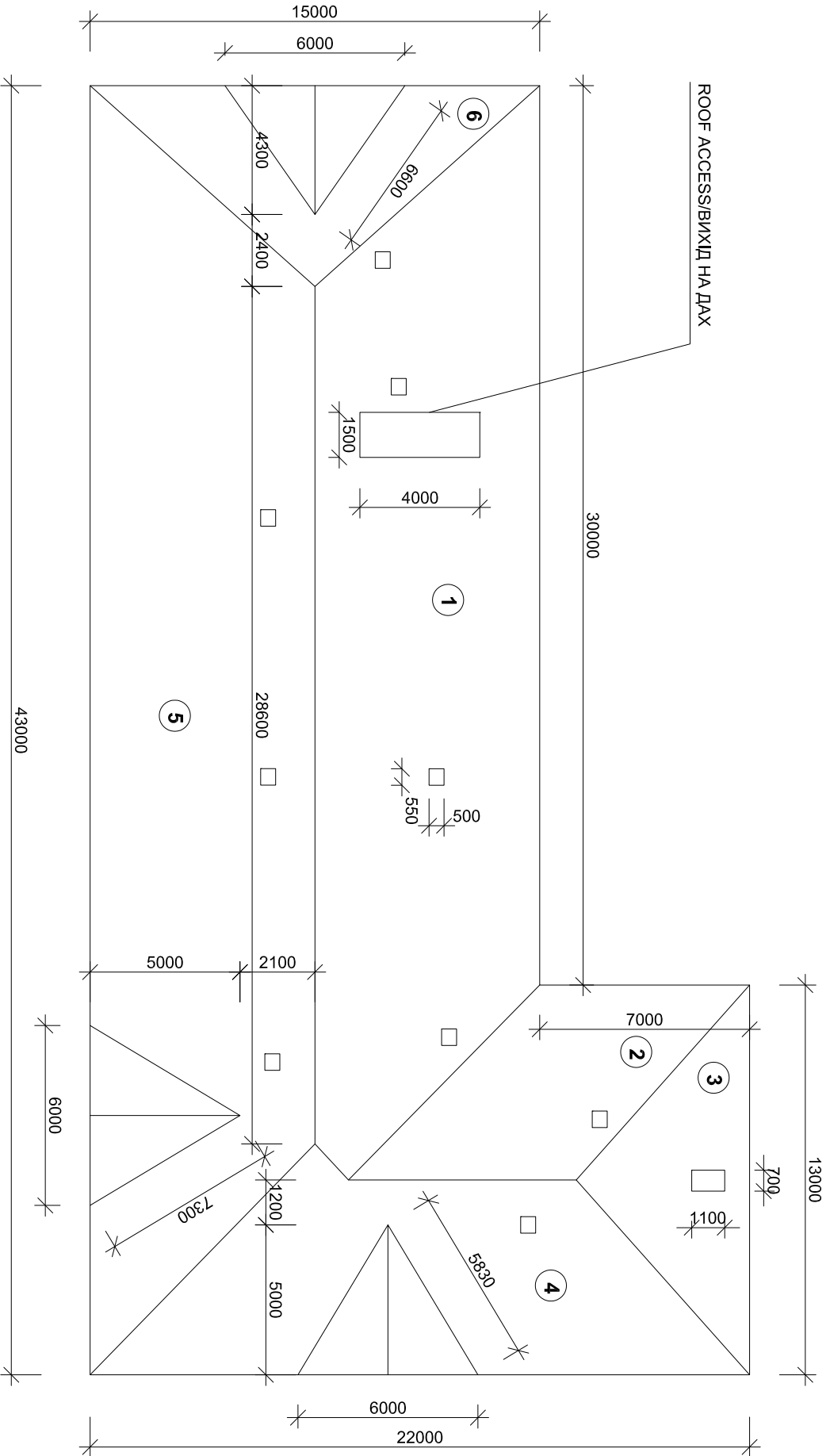
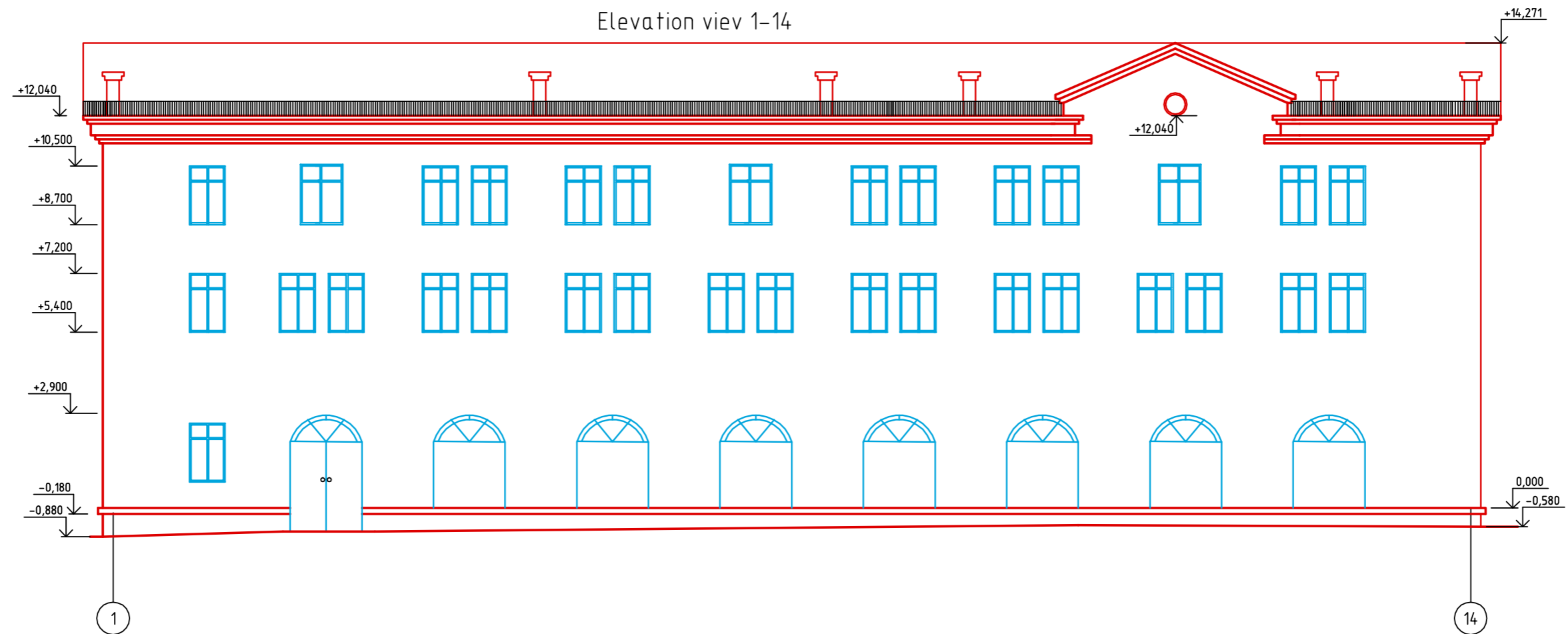


# ROOF PLAN/ ПЛАН ДАХУ М 1:200



- 1. S = 240 m<sup>2</sup>
- 2. S = 51,1 m<sup>2</sup>
- 3. S = 43,69 m<sup>2</sup>
- 4. S = 114,12 m<sup>2</sup>
- 5. S = 313 m<sup>2</sup>
- 6. S = 62 m<sup>2</sup>
- Σ = 823,91 m<sup>2</sup>

Фасад 1-14  
Elevation view 1-14



Создано  
 Изм. №  
 Подп. и дата  
 Инф. №

		SITE KRAMATORSK, Laso str, 14	PROGRAM RECONSTRUCTION OF EDUCATIONAL CORPUS No.5	DRAWINGS <b>6</b>					
CZECH DEVELOPMENT AGENCY Nerudova 3, 118 50, Praha 1, Czech Republic		PROJECT Reconstruction of the school building of the Donbas National Academy of civil engineering and architecture	EAST FACADE						
This documentation was prepared by Donbas National Academy of Civil Engineering and Architecture (Author) for the Czech development agency (CZDA), which consequently approved it as a part of project tender dossier. Documentation shall be used for preparation of the offers only. Copy or using data of this file for another purposes, without previous permission of CZDA and the Author, is strictly prohibited.									
name of file									
Изм.	Кол. ч.	Лист	№ док.	Подп.	Дата	Донбасская национальная академия строительства и архитектуры Donbas national academy of civil engineering and architecture Учебный корпус №5 Educational building No 5	Стадия	Лист	Листов
Разработал	Полянский								
Проверил	Колесниченко								
Н.контр.	Мнацаканян								
Фасад 1-14 Elevation view 1-14							Формат		