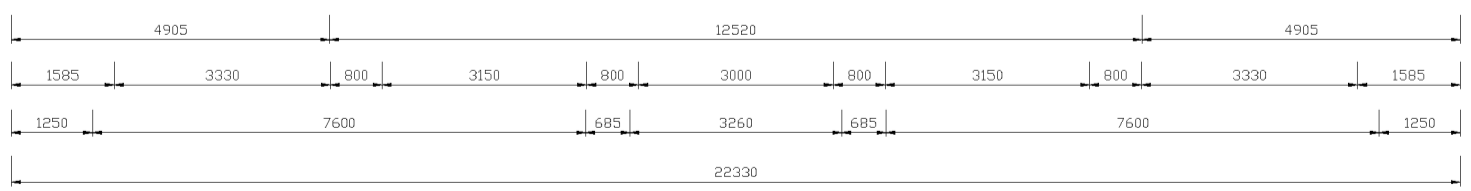
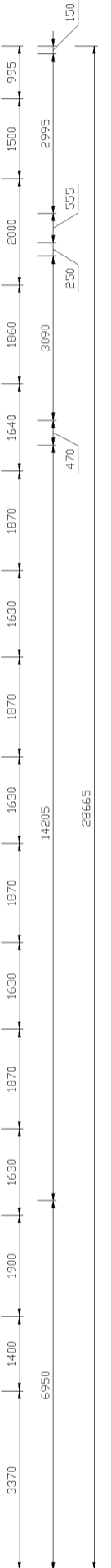
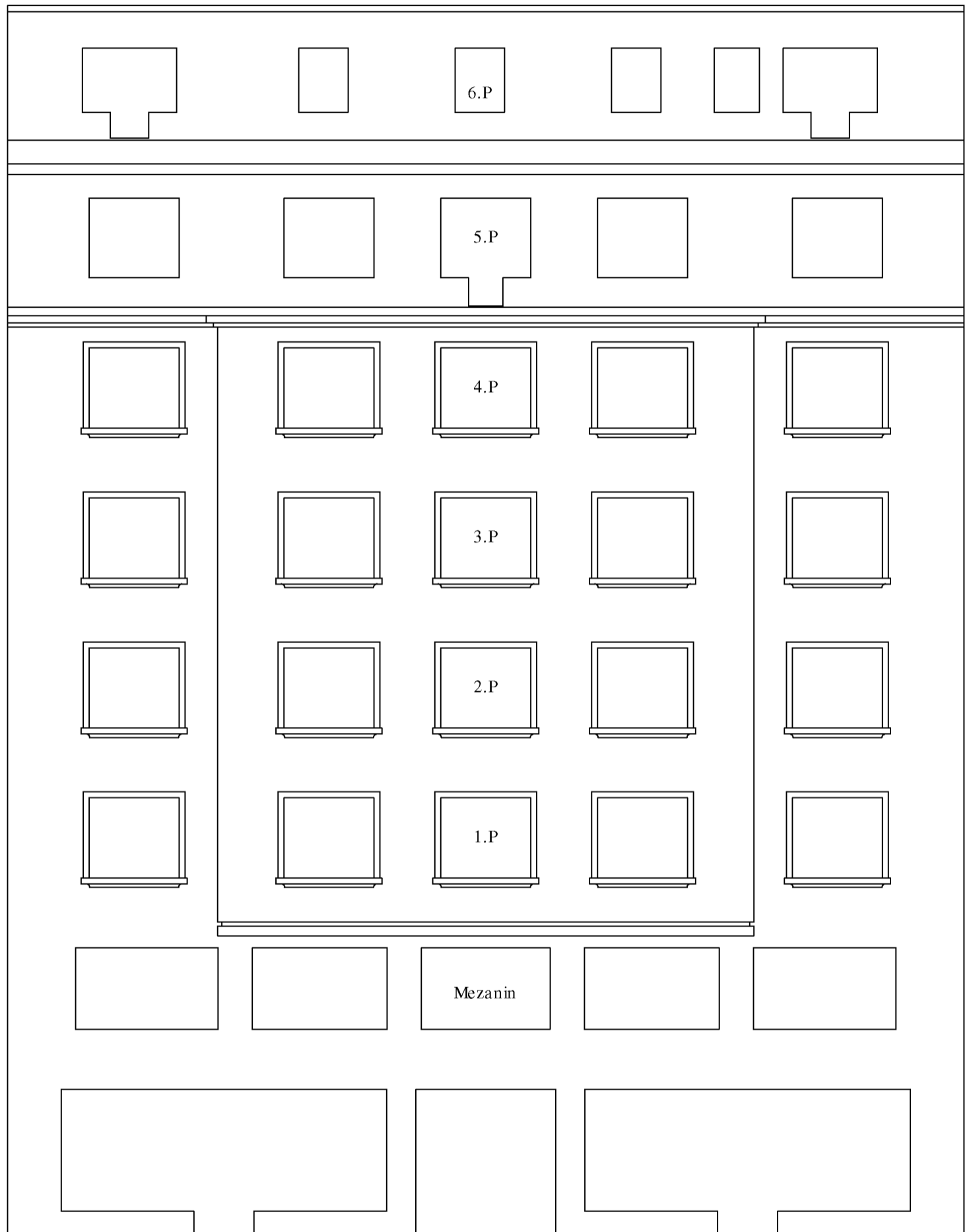


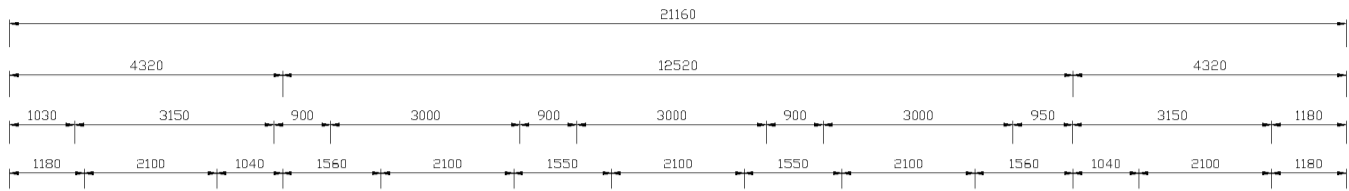
Hradební



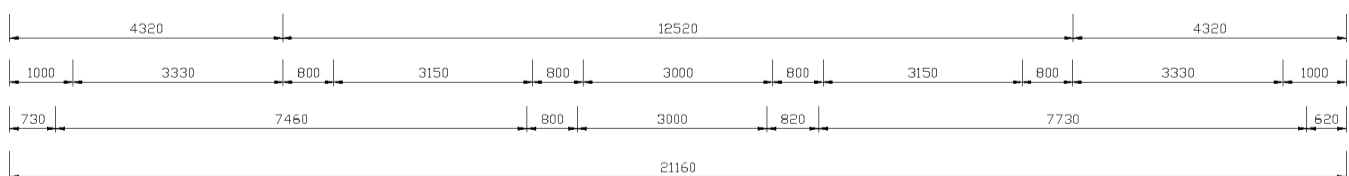
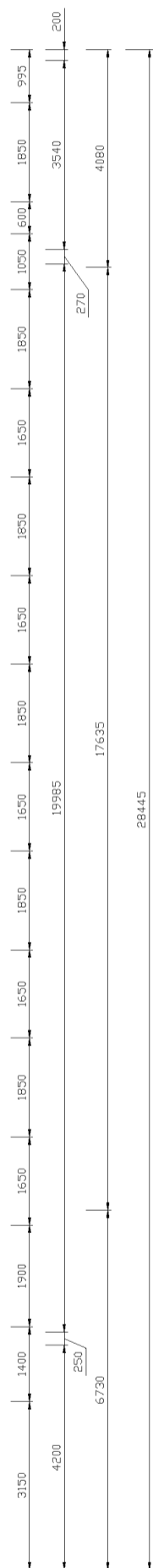
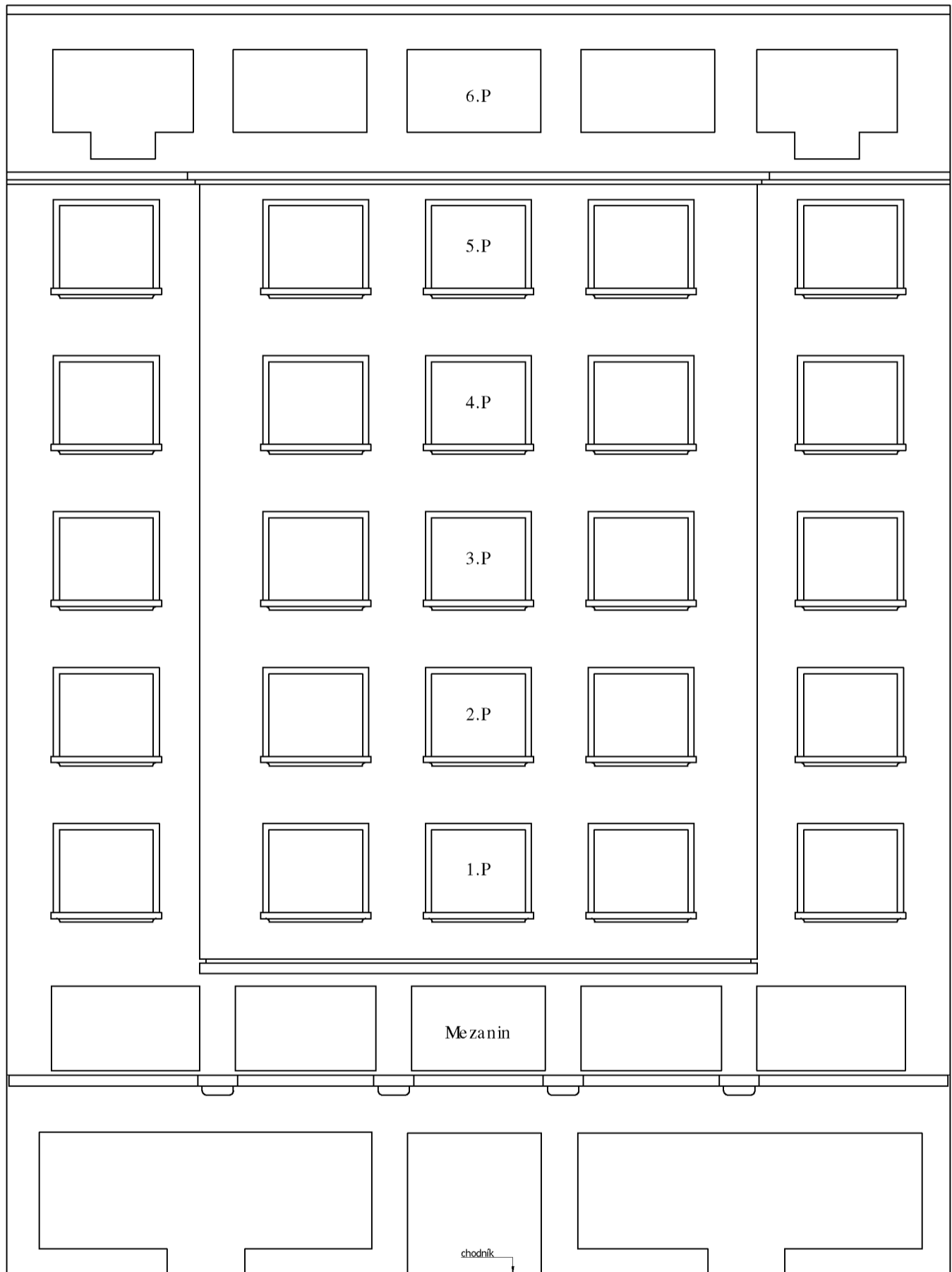
## **Orientační zaměření fasád**

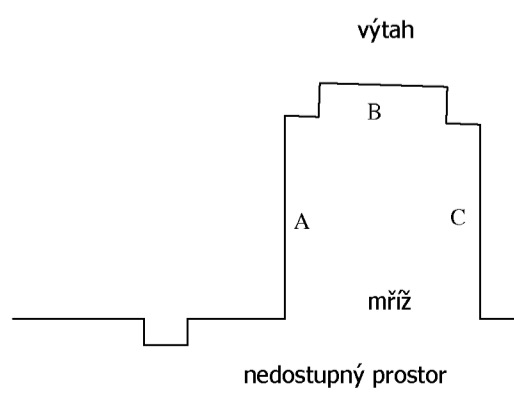
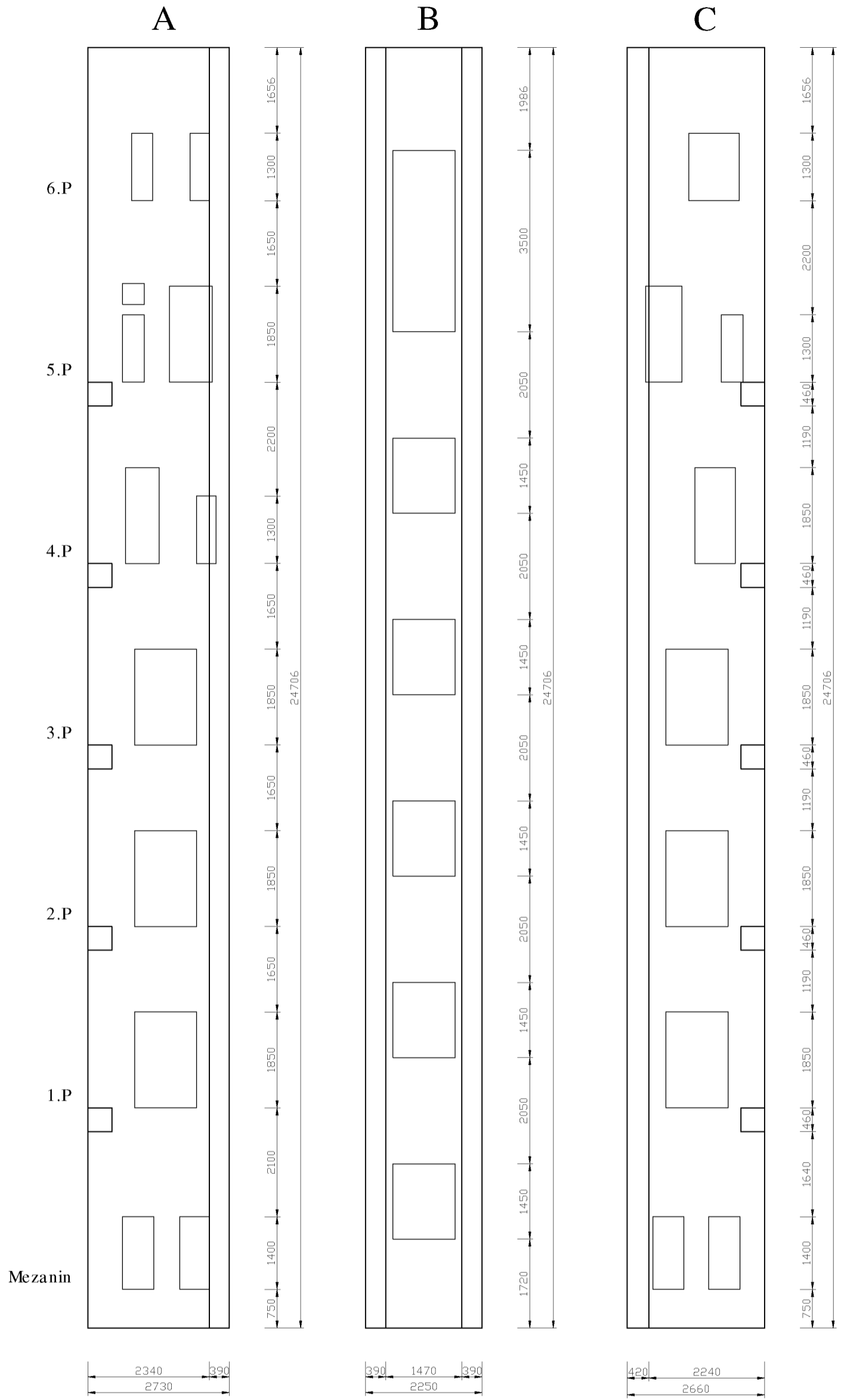
### **administrativní budovy Hradební 772/12, Praha 1**

Zaměření je provedeno pouze jako orientační pro účely zpracování Restaurátorského průzkumu a záměru. Výměry na výkresech nelze chápat jako přesnou projektovou dokumentaci. V případě potřeby přesných výměr je nutné provést zaměření na místě před zahájením prací.

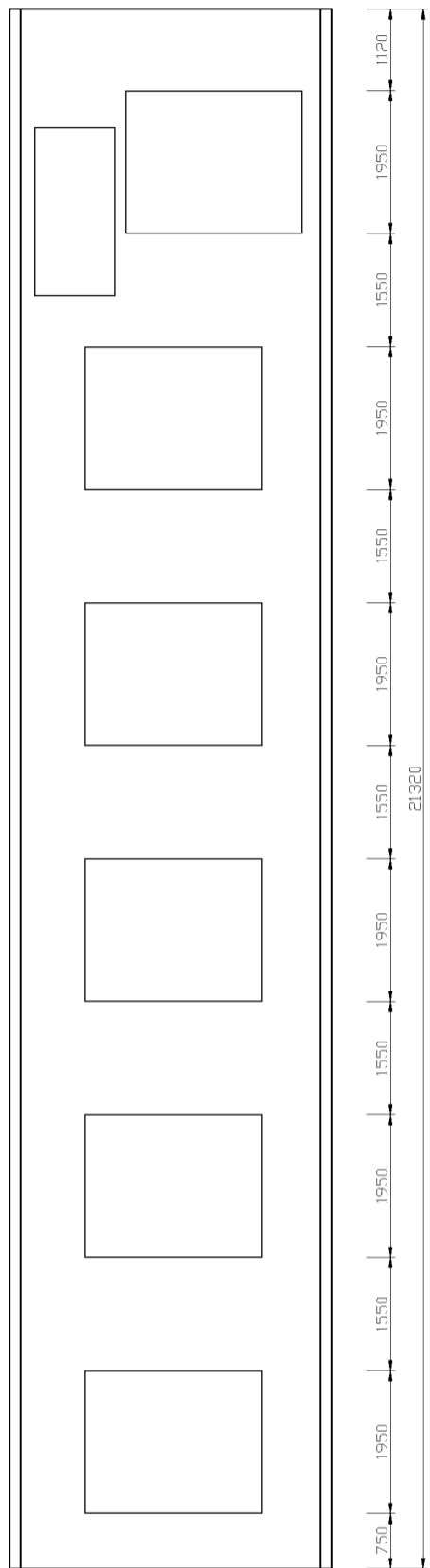


Revoluční

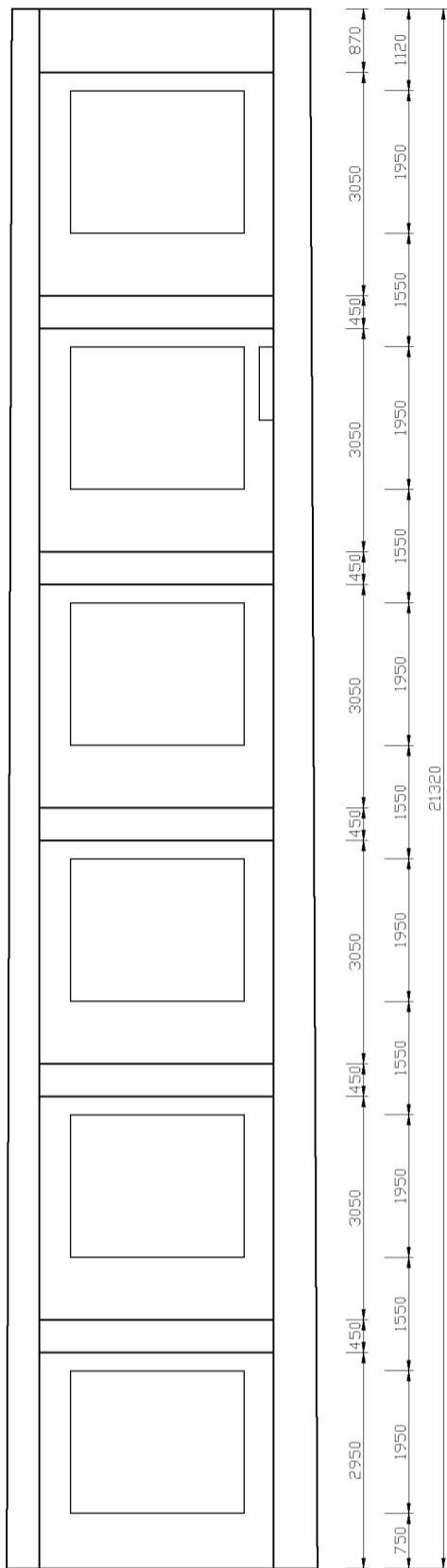




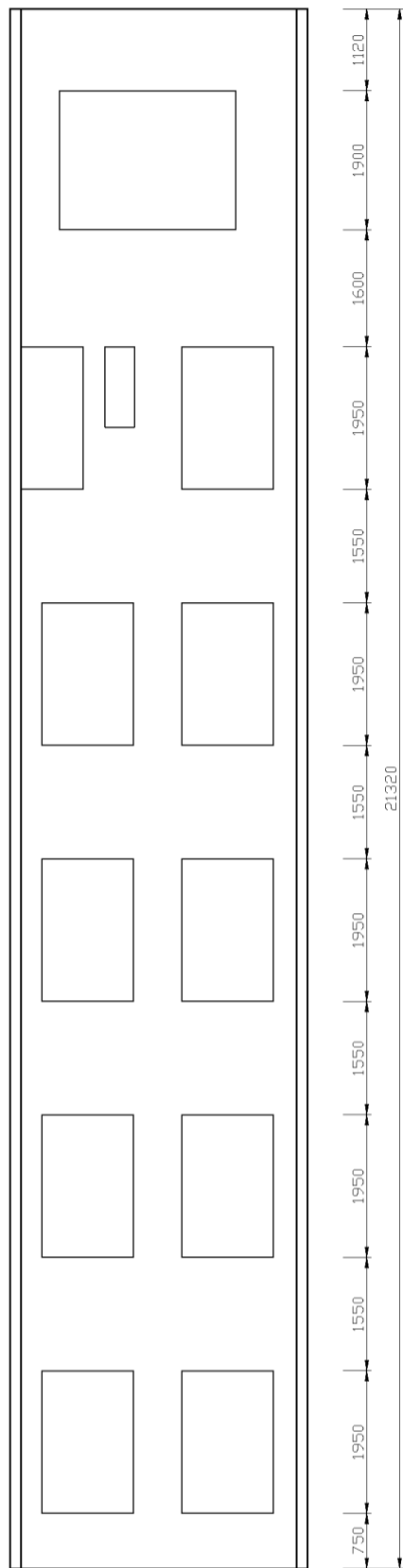
A



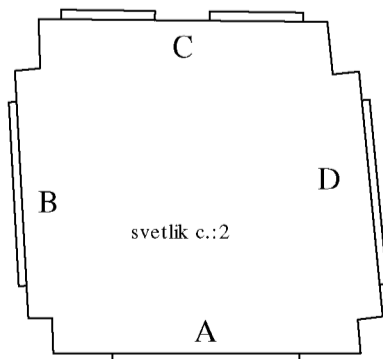
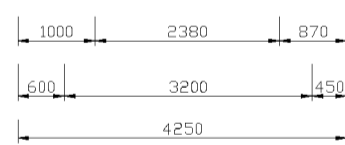
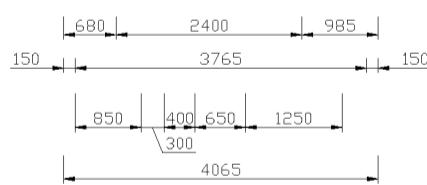
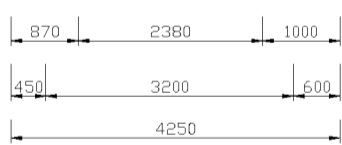
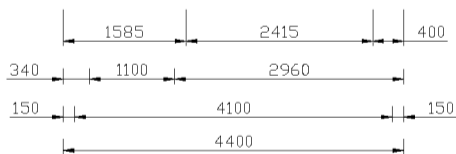
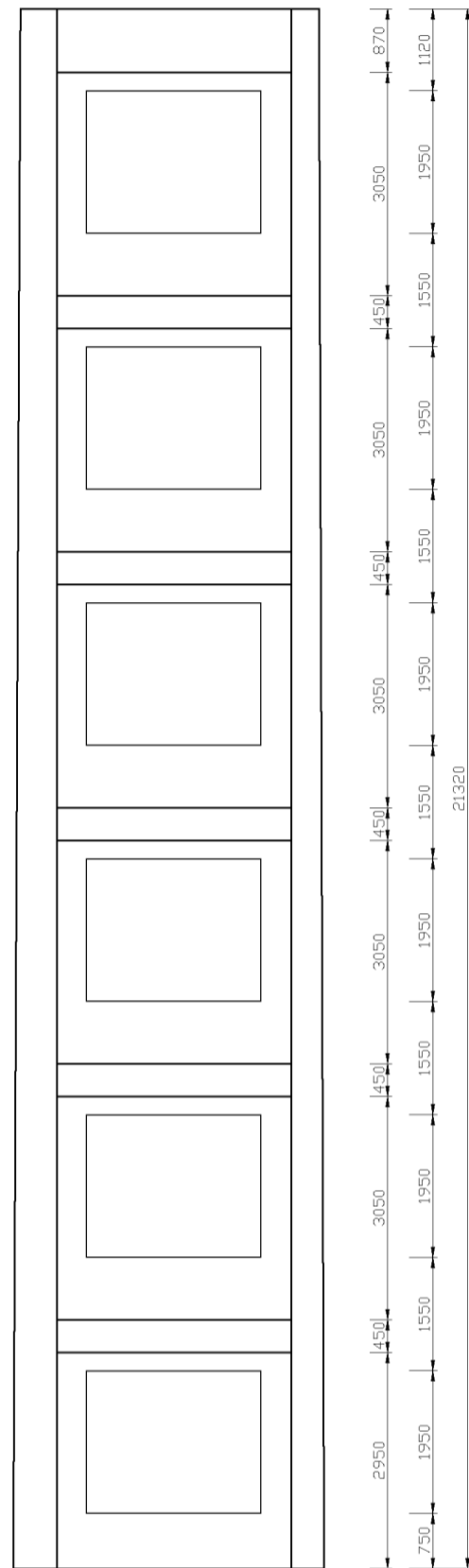
B



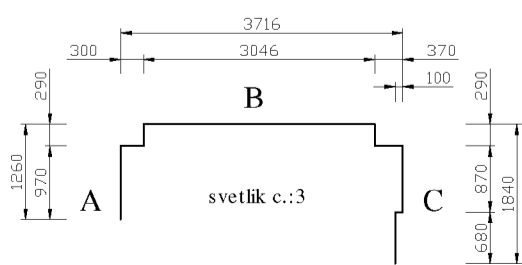
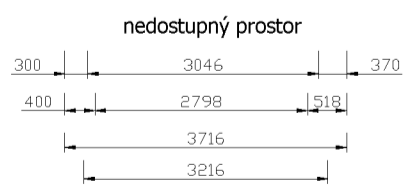
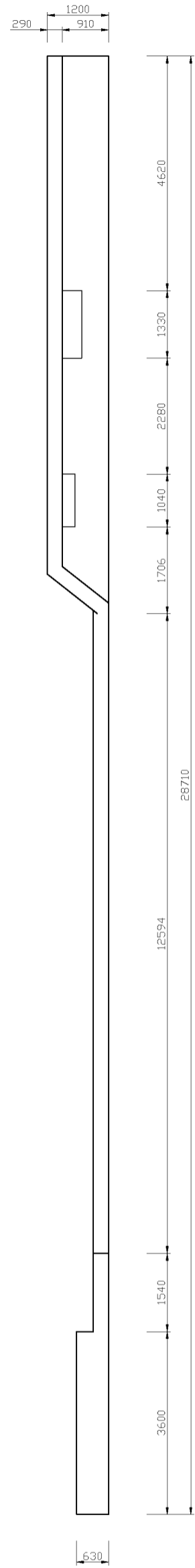
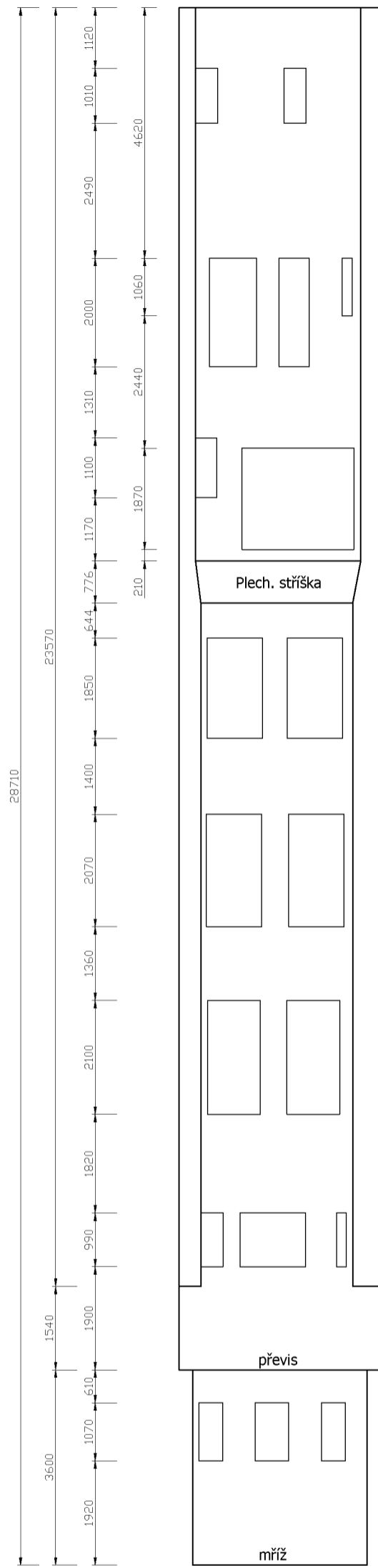
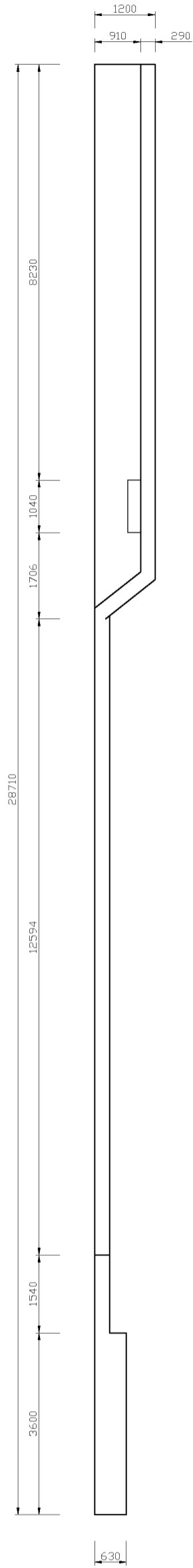
C



D



Výtah

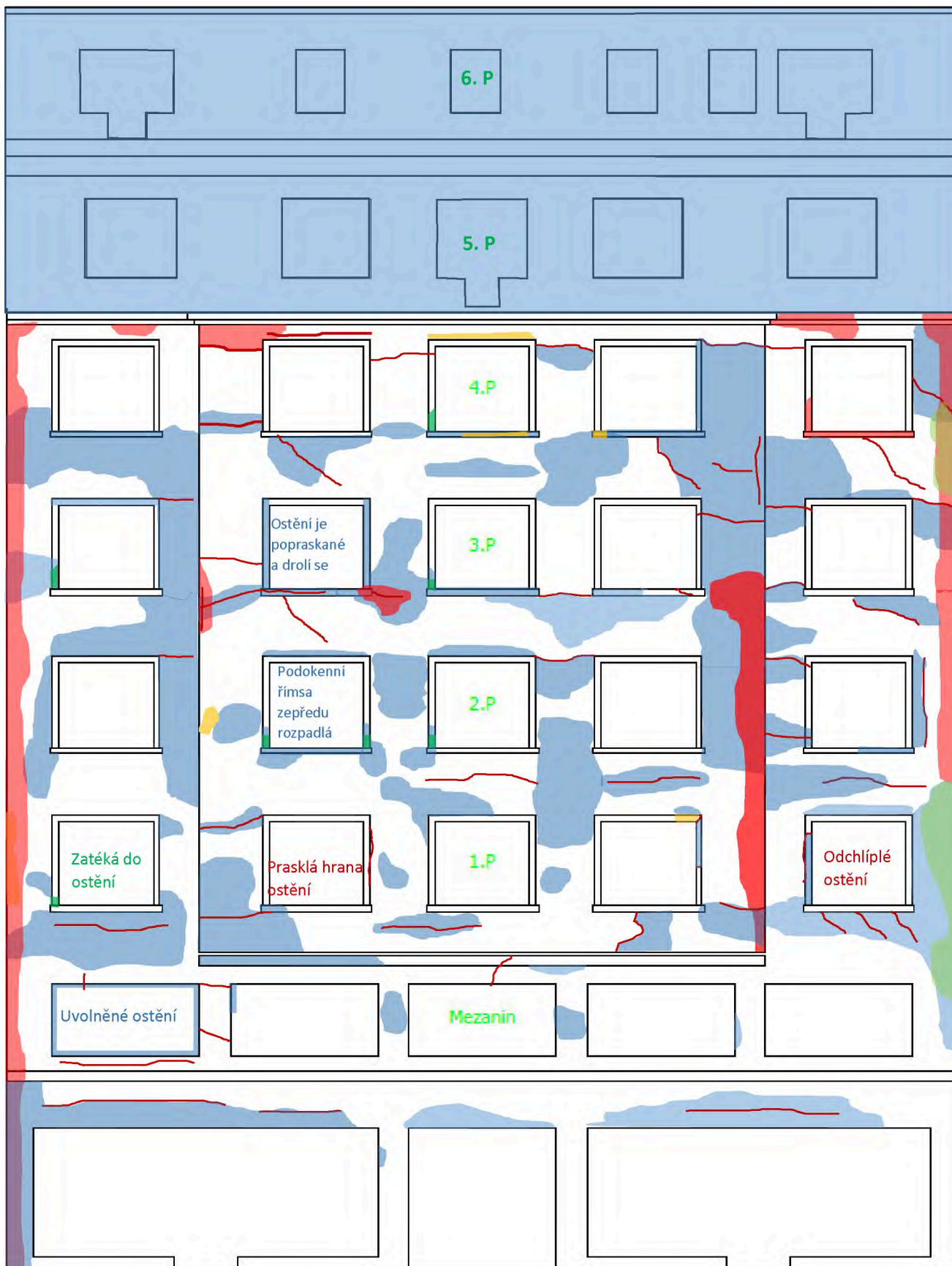


# Mapa poškození – průčelí do Revoluční ulice



silně uvolněné dutiny
  méně závažné dutiny
  havarijný stav
  praskliny

# Mapa poškození – průčelí do Hradební ulice



■ dutiny   ■ havarijní stav   ■ opadané plochy   — praskliny   ■ plomby