

**VÝKAZ DOSAVADNÍHO A NOVÉHO STAVU ÚDAJŮ KATASTRU NEMOVITOSTÍ**

Dosavadní stav			Nový stav															
Označení pozemku parc. číslem	Výměra parcely		Druh pozemku	Označení pozemku parc. číslem	Výměra parcely		Druh pozemku	Typ stavby	Způsob využití	Způsob využití	Způsob využití	Způsob využití	Způsob využití	Porovnání se stavem evidence právních vztahů				
	ha	m <sup>2</sup>			Způsob využití	ha								m <sup>2</sup>	Způsob využití	Způsob využití	Způsob využití	Způsob využití
													dražší poz. evidenci	ha	m <sup>2</sup>			
6502/40														6502/40		1		
6502/41														6502/41		4952		
6502/56														6502/56		1		
6525/1														6525/1		1		
6525/5														6525/5		4952		
6525/6														6525/6		1		
6525/8														6525/8		1		
6525/9														6525/9		1		
6525/11														6525/11		1		
6731/1														6731/1		2301		
6737/18														6737/18		2301		
6742/1														6742/1		1		
6742/7														6742/7		1		
6742/35														6742/35		1		
6742/36														6742/36		1		
6742/37														6742/37		1		
6742/42														6742/42		1		
6742/43														6742/43		1		
6742/54														6742/54		1		
6755/1														6755/1		2301		
6768/1														6768/1		4952		
6868														6868		1		
7157/3														7157/3		1		

Oprávněný: dle listin

Druh věcného břemene: dle listin

<p><b>GEOMETRICKÝ PLÁN pro</b> vymezení rozsahu věcného břemene k části pozemku</p>	<p><b>Geometrický plán ověřil úředně oprávněný zeměměřický inženýr:</b></p>	<p><b>Stejnopis ověřil úředně oprávněný zeměměřický inženýr:</b></p>
	Jméno, příjmení: <b>Ing. Lenka Hollá</b>	Jméno, příjmení:
	Číslo položky seznamu úředně oprávněných zeměměřických inženýrů: <b>2717/2015</b>	Číslo položky seznamu úředně oprávněných zeměměřických inženýrů:
	Dne: <b>3. srpna 2023</b> Číslo: <b>141/2023</b>	Dne:      Číslo:
Náležitosti a přesnosti odpovídá právním předpisům.	<p><b>Katastrální úřad souhlasí s očíslováním parcel.</b></p>	<p><b>Tento stejnopis odpovídá geometrickému plánu v elektronické podobě uloženému v dokumentaci katastrálního úřadu.</b></p>
<p>Vyhotovitel: <b>GK GEO2007, s.r.o.</b> <b>Vrchní 1</b> <b>691 63 Velké Němčice</b> <b>IČO: 277 36 458</b></p>	<p><b>Ing. Doris Langmaierová</b> <b>KÚ pro Karlovarský kraj</b> <b>KP Sokolov</b> <b>PGP 669/2023-409</b> <b>2023.08.08 16:47:38 +02'00'</b></p>	<p><b>Ověření stejnopisu geometrického plánu v listinné podobě.</b></p>
Číslo plánu: <b>2887-648/2022</b>		
Okres: <b>Sokolov</b>		
Obec: <b>Kraslice</b>		
Kat. území: <b>Kraslice</b>		
Mapový list: <b>Kraslice 9-7/32,34,9-8/12,...</b>		
Dosavadním vlastníkům pozemků byla poskytnuta možnost seznámit se v terénu s průběhem navrhovaných nových hranic, které byly označeny předepsaným způsobem:		

**VÝKAZ DOSAVADNÍHO A NOVÉHO STAVU ÚDAJŮ KATASTRU NEMOVITOSTÍ**

Dosavadní stav			Nový stav																		
Označení pozemku parc. číslem	Výměra parcely		Druh pozemku	Označení pozemku parc. číslem	Výměra parcely		Druh pozemku	Typ stavby	Způsob využití	Způsob využití	Způsob určení výměr	Porovnání se stavem evidence právních vztahů									
	ha	m <sup>2</sup>			Způsob využití	ha						m <sup>2</sup>	Způsob využití	Způsob využití	Způsob určení výměr	Díl přechází z pozemku označeného v		Číslo listu vlastnictví	Výměra dílu		Označení dílu
																katastru nemovitostí	dřívější poz. evidenci		ha	m <sup>2</sup>	
42/1												42/1		1							
130/1												130/1		1							
130/2												130/2		1							
130/5												130/5		1							
130/6												130/6		1							
130/19												130/19		1							
130/39												130/39		1							
130/43												130/43		1							
130/48												130/48		1							
130/53												130/53		1							
130/55												130/55		1							
130/57												130/57		1							
130/58												130/58		1							
130/59												130/59		1							
130/67												130/67		1							
130/68												130/68		1							
130/81												130/81		1							
130/82												130/82		1							
130/83												130/83		1							
130/84												130/84		1							
130/86												130/86		1							
130/89												130/89		1							
130/93												130/93		1							
130/94												130/94		1							
130/97												130/97		1							
130/99												130/99		1							
130/101												130/101		1							
130/103												130/103		1							
130/105												130/105		1							
130/106												130/106		1							
130/116												130/116		1							
130/117												130/117		1							
130/119												130/119		1							
130/120												130/120		1							
199												199		1							
224/1												224/1		1							
224/2												224/2		1							
224/3												224/3		1							
225/2												225/2		1							
225/3												225/3		1							
231												231		1							
405/4												405/4		1							
405/6												405/6		2301							
st.2074												st.2074		1							
3096/1												3096/1		1							
3096/4												3096/4		1							
3137/1												3137/1		1							
3137/2												3137/2		1							
3143/2												3143/2		1							
6494/1												6494/1		1							
6494/12												6494/12		1							
6500/3												6500/3		1							
6502/1												6502/1		4952							
6502/2												6502/2		1							
6502/5												6502/5		1							
6502/6												6502/6		1							
6502/13												6502/13		1							
6502/14												6502/14		1							
6502/28												6502/28		1							
6502/31												6502/31		1							

**SEZNAM SOUŘADNIC (S-JTSK)**

Číslo bodu	Y	X	Kód kv.	Číslo bodu	Y	X	Kód kv.
545-9	874055.35	995763.60	3	9	874102.21	995355.74	3
545-10	874056.15	995764.67	3	10	874102.08	995347.78	3
545-1137	873951.33	995779.31	3	11	874101.58	995347.77	3
545-1737	873996.07	995932.83	3	12	874040.97	995420.68	6
545-1738	873995.01	995931.99	3	13	874040.96	995421.18	6
661-6	874160.54	995769.23	3	14	874041.18	995401.99	6
1128-53	873742.15	996313.65	3	15	874041.17	995402.49	6
1128-70	873737.69	996307.61	3	16	874041.54	995369.80	6
1364-85	873662.72	996495.20	3	17	874041.54	995370.30	6
1364-87	873665.58	996491.13	3	18	874047.98	995345.66	3
1364-90	873663.34	996494.48	3	19	874047.97	995346.16	3
1364-314	873662.98	996494.90	3	20	874048.29	995318.52	3
1364-363	873665.31	996491.55	3	21	874048.28	995319.02	3
1524-35	874178.76	995571.95	3	22	874044.69	995483.34	3
1627-105	874074.17	995655.83	3	23	874044.19	995483.33	3
1627-2540	874094.07	995668.93	3	24	874039.42	995483.31	3
1627-2541	874094.99	995667.97	3	25	874038.92	995483.30	3
1627-2542	874096.95	995669.93	3	26	874025.09	995483.23	3
1627-2546	874108.05	995679.46	3	27	874024.58	995483.22	3
1627-2547	874110.12	995681.37	3	28	873997.59	995515.50	3
1627-2563	874106.35	995706.89	3	29	873997.07	995515.49	3
1627-2564	874107.13	995707.64	3	30	874008.74	995515.59	3
1627-2569	874094.55	995719.24	3	31	874008.24	995515.58	3
1627-2570	874095.52	995720.17	3	32	873984.95	995547.93	3
1627-2574	874082.73	995731.62	3	33	873984.45	995547.93	3
1627-2575	874084.01	995732.85	3	34	873970.49	995547.87	3
1675-844	873811.14	996150.77	3	35	873969.96	995547.87	3
1676-662	873708.12	996494.25	3	36	874088.05	995492.62	3
1676-769	873698.95	996498.17	3	37	874088.05	995493.12	3
1676-1170	873662.36	996494.96	3	38	874088.18	995478.14	3
2438-756	873707.20	996495.17	6	39	874088.18	995478.64	3
2475-208	873908.41	995949.70	3	40	874130.52	995507.50	6
2475-210	873907.70	995948.88	3	41	874130.51	995508.01	6
2475-219	873889.80	995952.52	3	42	874130.24	995525.35	6
2475-221	873889.15	995952.21	3	43	874130.24	995525.85	6
2475-225	873876.92	995952.42	3	45	874139.87	995544.89	3
2475-251	873859.00	995980.60	3	46	874172.90	995508.01	3
2475-291	873881.81	995987.38	3	47	874172.85	995506.09	3
2475-297	873864.63	995991.39	3	48	874171.13	995508.47	3
2475-299	873864.04	995991.32	3	49	874171.12	995508.97	3
2475-340	873856.52	996024.27	3	50	874170.98	995526.35	3
2475-353	873837.97	996027.57	3	51	874170.98	995526.86	3
2486-59	874101.94	995352.60	3	52	874180.49	995545.00	3
2514-148	874120.81	995425.61	3	53	874180.48	995545.50	3
2523-29	873812.10	996148.78	3	54	874175.05	995602.11	6
2536-2	874054.43	995390.12	3	55	874174.76	995602.63	6
2536-5	874053.98	995396.67	3	56	874087.88	995510.78	3
2536-204	874055.03	995319.42	3	57	874087.88	995511.28	3
2868-721	874182.39	995523.63	3	58	874087.75	995525.16	3
2868-724	874139.88	995544.46	3	59	874087.74	995525.66	3
1	874138.35	995399.64	3	60	874097.21	995558.29	3
2	873946.05	995787.22	3	61	874097.20	995558.79	3
3	874140.61	995417.02	3	62	874070.83	995664.57	3
4	874140.11	995417.01	3	63	874058.06	995684.47	3
5	874159.12	995417.12	3	64	874058.41	995684.10	3
6	874158.58	995417.11	3	65	874056.80	995682.67	3
7	874109.69	995386.13	3	66	874056.40	995682.90	3
8	874109.69	995386.63	3	67	874093.83	995668.70	3

**SEZNAM SOUŘADNIC (S-JTSK)**

Číslo bodu	Y	X	Kód kv.	Číslo bodu	Y	X	Kód kv.
68	874106.52	995706.71	3	130	873752.69	996294.46	3
69	874106.96	995707.83	3	131	873741.92	996294.13	3
70	874094.69	995719.09	3	132	873741.71	996294.59	3
71	874095.39	995720.30	3	133	873744.32	996289.51	6
72	874082.83	995731.52	3	134	873743.97	996290.28	6
73	874083.87	995732.99	3	135	873742.75	996312.34	3
74	874036.17	995732.17	5	136	873743.90	996426.04	5
75	874036.54	995732.51	5	137	873743.75	996426.40	5
76	874025.75	995722.45	5	138	873745.28	996426.66	3
77	874026.12	995722.80	5	139	873745.10	996426.56	3
78	873970.86	995763.87	3	140	873704.90	996496.25	3
79	873971.20	995763.51	3	141	873699.66	996498.36	3
80	873912.55	995820.84	3	142	873692.94	996495.50	6
81	873912.90	995820.47	3	143	873693.38	996495.75	6
82	873900.41	995834.96	4	144	873666.04	996490.58	3
83	873900.72	995834.57	4	145	873662.18	996496.04	3
84	873890.45	995850.35	4	146	873661.71	996495.84	3
85	873890.69	995849.91	4	169	874157.88	995368.77	3
86	873827.91	995926.48	3	170	874158.64	995368.84	3
87	873827.65	995926.91	3	171	874158.69	995368.35	3
88	873814.77	995947.52	3	172	874158.38	995368.32	3
89	873814.50	995947.94	3	173	874157.97	995367.66	3
90	873795.26	995976.23	3	174	874157.88	995368.26	3
91	873794.98	995976.68	3	175	874158.47	995367.67	3
92	873786.49	995990.35	3	176	874157.00	995368.87	3
93	873786.22	995990.78	3	177	874156.97	995368.37	3
96	873752.61	996047.91	5	178	874139.34	995368.75	3
97	873752.35	996048.33	5	179	874139.23	995368.25	3
98	873908.13	995947.45	3	180	874138.70	995369.03	3
99	873907.58	995948.03	3	181	874138.30	995368.67	3
100	873863.92	995990.29	3	182	874138.39	995369.98	3
101	873864.41	995990.18	3	183	874137.89	995369.90	3
102	873882.34	995992.00	3	184	874138.32	995376.48	3
103	873882.83	995991.89	3	185	874137.82	995376.48	3
104	874055.85	995763.22	3	186	874138.61	995386.51	3
105	874023.85	995787.12	3	187	874138.11	995386.52	3
106	874023.45	995787.42	3	188	874138.55	995396.24	3
107	874093.67	995827.95	3	189	874138.05	995396.24	3
108	874093.28	995828.27	3	190	874137.85	995399.63	3
109	874124.57	995802.20	3	191	874138.11	995402.33	3
110	874124.18	995802.52	3	192	874137.62	995402.14	3
111	874160.97	995768.89	3	193	874137.59	995403.00	3
112	874066.27	995881.63	6	194	874137.26	995402.61	3
113	874066.79	995882.05	6	195	874136.83	995403.42	3
114	874007.27	995914.33	3	196	874136.70	995402.93	3
115	874006.96	995914.72	3	197	874130.68	995403.53	3
116	873994.60	995932.50	3	198	874130.52	995403.04	3
117	873975.90	995956.12	3	199	874130.23	995403.83	3
118	873975.59	995956.51	3	200	874129.85	995403.48	3
119	873952.37	995992.85	6	201	874130.00	995404.26	3
120	873952.05	995993.24	6	202	874129.50	995404.13	3
123	873913.30	996040.14	3	203	874129.75	995417.15	3
124	873912.89	996039.87	3	204	874129.25	995417.39	3
125	873805.61	996165.39	3	205	874135.10	995417.36	3
126	873805.78	996164.92	3	206	874129.73	995417.65	3
127	873762.58	996272.74	3	207	874135.08	995417.86	3
128	873762.79	996272.28	3	208	874140.10	995417.43	3
129	873752.49	996294.91	3	209	874140.34	995417.93	3

**SEZNAM SOUŘADNIC (S-JTSK)**

Číslo bodu	Y	X	Kód kv.	Číslo bodu	Y	X	Kód kv.
210	874140.60	995417.43	3	268	874113.18	995400.12	3
211	874148.15	995417.46	3	269	874113.68	995400.22	3
212	874148.14	995417.96	3	270	874113.43	995394.52	3
213	874158.12	995417.76	3	271	874113.93	995394.54	3
214	874158.20	995418.30	3	272	874113.50	995388.38	3
215	874158.39	995417.58	3	273	874114.00	995388.37	3
216	874158.79	995417.92	3	274	874113.40	995387.19	3
217	874129.44	995422.45	3	275	874113.88	995386.87	3
218	874128.95	995422.26	3	276	874112.71	995386.81	3
219	874128.97	995423.02	3	277	874112.85	995386.32	3
220	874128.64	995422.63	3	278	874111.62	995386.78	3
221	874128.22	995423.45	3	279	874111.87	995386.28	3
222	874128.07	995422.96	3	280	874111.37	995386.26	3
223	874123.99	995423.52	3	281	874111.30	995382.38	3
224	874123.78	995423.01	3	282	874111.79	995382.08	3
225	874122.48	995425.47	3	283	874110.86	995382.15	3
226	874122.12	995425.12	3	284	874110.99	995381.65	3
227	874121.34	995425.60	3	285	874107.56	995382.09	3
228	874121.34	995426.17	3	286	874107.57	995381.59	3
229	874116.44	995426.24	3	287	874102.48	995381.90	3
230	874116.47	995425.73	3	288	874102.74	995381.41	3
231	874111.35	995426.08	3	289	874099.15	995381.90	3
232	874111.32	995425.59	3	290	874099.16	995384.10	3
233	874110.63	995424.74	3	291	874098.65	995381.91	3
234	874110.86	995425.85	3	292	874098.66	995384.10	3
235	874111.10	995424.55	3	293	874086.17	995381.93	3
236	874110.28	995424.22	3	294	874102.24	995381.40	3
237	874110.61	995423.81	3	295	874086.06	995381.44	3
238	874109.25	995423.78	3	296	874085.58	995382.20	3
239	874109.53	995423.36	3	297	874085.24	995381.81	3
240	874108.39	995422.96	3	298	874085.21	995382.75	3
241	874108.84	995422.70	3	299	874084.72	995382.59	3
242	874108.06	995421.56	3	300	874085.15	995383.98	3
243	874108.56	995421.51	3	301	874084.65	995383.97	3
244	874108.72	995409.31	3	302	874102.43	995367.99	3
245	874109.22	995409.30	3	303	874102.94	995367.98	3
246	874108.64	995408.57	3	304	874102.71	995355.74	3
247	874109.12	995408.34	3	305	874101.73	995349.06	3
248	874107.58	995407.51	3	306	874102.22	995348.93	3
249	874107.96	995407.18	3	307	874101.53	995348.65	3
250	874107.19	995407.00	3	308	874102.04	995348.55	3
251	874107.67	995406.80	3	309	874111.12	995429.49	3
252	874107.10	995406.29	3	310	874110.62	995429.46	3
253	874107.60	995406.30	3	311	874111.00	995431.81	3
254	874107.20	995401.38	3	312	874110.52	995431.56	3
255	874107.69	995401.85	3	313	874098.99	995431.93	3
256	874107.50	995401.00	3	314	874110.50	995432.06	3
257	874107.82	995401.40	3	315	874098.74	995431.43	3
258	874108.09	995400.70	3	316	874099.03	995433.48	3
259	874108.20	995401.21	3	317	874098.49	995431.93	3
260	874110.02	995400.83	3	318	874098.53	995433.47	3
261	874109.95	995401.33	3	319	874085.17	995431.83	3
262	874111.86	995401.19	3	320	874084.60	995431.32	3
263	874111.84	995401.70	3	321	874084.81	995433.28	3
264	874112.53	995401.12	3	322	874084.31	995433.28	3
265	874112.73	995401.61	3	323	874111.00	995436.00	3
266	874112.92	995400.81	3	324	874110.50	995436.00	3
267	874113.34	995401.11	3	325	874110.77	995448.43	3

**SEZNAM SOUŘADNIC (S-JTSK)**

Číslo bodu	Y	X	Kód kv.	Číslo bodu	Y	X	Kód kv.
326	874110.28	995448.24	3	384	874054.37	995379.75	3
327	874110.28	995449.02	3	385	874053.82	995370.54	3
328	874109.99	995448.58	3	386	874054.32	995370.29	3
329	874109.54	995449.23	3	387	874042.72	995370.59	3
330	874109.49	995448.73	3	388	874053.82	995370.04	3
331	874105.72	995449.04	3	389	874042.82	995370.09	3
332	874105.73	995448.54	3	390	874042.07	995370.32	3
333	874100.25	995449.11	3	391	874042.18	995369.82	3
334	874100.26	995448.61	3	392	874053.99	995346.32	3
335	874098.13	995449.20	3	393	874054.49	995346.05	3
336	874098.13	995448.70	3	394	874053.21	995346.40	3
337	874090.73	995448.64	3	395	874054.00	995345.81	3
338	874090.64	995448.13	3	396	874053.21	995345.89	3
339	874090.31	995448.84	3	397	874051.59	995346.45	3
340	874089.92	995448.48	3	398	874051.60	995345.95	3
341	874090.13	995449.29	3	399	874054.24	995338.89	3
342	874089.64	995449.17	3	400	874054.74	995338.92	3
343	874089.97	995450.87	3	401	874055.66	995322.10	3
344	874089.47	995450.86	3	402	874056.15	995322.15	3
345	874089.72	995460.90	3	403	874056.01	995319.58	3
346	874089.23	995460.63	3	404	874056.62	995318.90	3
347	874050.01	995460.34	3	405	874055.16	995318.69	3
348	874089.21	995461.13	3	406	874052.97	995319.14	3
349	874050.24	995459.84	3	407	874049.61	995460.80	3
350	874049.22	995459.45	3	408	874049.11	995460.61	3
351	874049.57	995460.08	3	409	874049.41	995483.95	3
352	874049.72	995459.33	3	410	874048.92	995483.76	3
353	874049.44	995448.91	3	411	874048.91	995484.53	3
354	874049.94	995448.92	3	412	874048.27	995484.51	3
355	874049.41	995437.83	3	413	874044.69	995485.03	3
356	874049.91	995437.83	3	414	874048.51	995485.01	3
357	874049.65	995420.61	3	415	874044.62	995484.53	3
358	874050.16	995420.29	3	416	874043.55	995485.33	3
359	874049.05	995420.76	3	417	874044.11	995484.66	3
360	874049.66	995420.09	3	418	874043.71	995484.77	3
361	874049.05	995420.25	3	419	874043.11	995484.85	3
362	874044.74	995421.16	3	420	874043.40	995484.43	3
363	874044.72	995420.66	3	421	874042.32	995484.49	3
364	874049.67	995409.89	3	422	874042.44	995483.99	3
365	874050.17	995409.89	3	423	874039.14	995484.36	3
366	874049.82	995402.51	3	424	874039.38	995483.87	3
367	874050.33	995402.22	3	425	874038.88	995483.88	3
368	874049.14	995402.61	3	426	874038.43	995484.43	3
369	874049.84	995401.99	3	427	874038.45	995483.93	3
370	874049.14	995402.11	3	428	874031.36	995484.47	3
371	874049.93	995401.07	3	429	874031.37	995483.97	3
372	874050.42	995401.19	3	430	874025.15	995484.30	3
373	874050.24	995400.34	3	431	874025.19	995483.80	3
374	874050.67	995400.59	3	432	874024.72	995483.99	3
375	874052.23	995397.80	3	433	874049.41	995485.42	3
376	874052.59	995398.16	3	434	874048.91	995485.55	3
377	874053.15	995397.07	3	435	874049.27	995491.36	3
378	874053.53	995397.41	3	436	874048.77	995491.35	3
379	874053.45	995396.59	3	437	874048.71	995506.74	3
380	874053.76	995393.92	3	438	874048.21	995506.73	3
381	874054.26	995393.95	3	439	874048.68	995515.03	3
382	874053.83	995390.20	3	440	874048.19	995514.53	3
383	874053.87	995379.75	3	441	874048.45	995519.38	3

**SEZNAM SOUŘADNIC (S-JTSK)**

Číslo bodu	Y	X	Kód kv.	Číslo bodu	Y	X	Kód kv.
442	874047.95	995519.38	3	500	873970.73	995548.53	3
443	874048.62	995521.64	3	501	874089.69	995462.42	3
444	874048.14	995521.93	3	502	874089.19	995462.43	3
445	874049.27	995524.30	3	503	874089.76	995464.09	3
446	874048.77	995524.36	3	504	874089.26	995464.08	3
447	874049.27	995525.62	3	505	874089.68	995467.80	3
448	874048.77	995525.55	3	506	874089.18	995467.80	3
449	874048.80	995526.98	3	507	874089.88	995473.66	3
450	874048.57	995526.23	3	508	874089.38	995473.67	3
451	874048.09	995528.10	3	509	874089.92	995478.30	3
452	874047.71	995527.76	3	510	874089.42	995478.06	3
453	874046.34	995529.53	3	511	874089.42	995478.56	3
454	874046.07	995529.10	3	512	874090.29	995492.79	3
455	874044.28	995530.45	3	513	874089.78	995492.55	3
456	874044.16	995529.96	3	514	874089.79	995493.05	3
457	874042.15	995530.60	3	515	874090.35	995501.13	3
458	874042.15	995530.10	3	516	874089.85	995501.39	3
459	874033.46	995530.15	3	517	874102.15	995500.88	3
460	874033.48	995529.65	3	518	874090.35	995501.63	3
461	874001.84	995529.49	3	519	874102.15	995501.38	3
462	874002.10	995528.99	3	520	874110.23	995500.98	3
463	874001.67	995524.98	3	521	874110.22	995501.48	3
464	874001.60	995528.99	3	522	874112.58	995501.06	3
465	874002.17	995524.97	3	523	874112.58	995501.57	3
466	874001.38	995516.81	3	524	874113.70	995500.85	3
467	874001.88	995516.81	3	525	874113.91	995501.31	3
468	874008.13	995516.22	3	526	874115.02	995499.83	3
469	873997.86	995516.36	3	527	874115.36	995500.20	3
470	874008.55	995516.71	3	528	874116.25	995498.48	3
471	873997.78	995516.76	3	529	874116.55	995498.90	3
472	873997.35	995516.40	3	530	874117.36	995498.03	3
473	873994.85	995529.50	3	531	874117.47	995498.53	3
474	873994.72	995529.00	3	532	874119.45	995497.90	3
475	873994.31	995529.78	3	533	874119.46	995498.40	3
476	873993.90	995529.43	3	534	874130.21	995498.16	3
477	873994.07	995530.58	3	535	874130.91	995498.76	3
478	873993.56	995530.52	3	536	874131.56	995499.41	3
479	873994.40	995535.74	3	537	874132.16	995500.40	3
480	873993.90	995535.75	3	538	874132.01	995498.82	3
481	873994.26	995546.62	3	539	874131.66	995500.41	3
482	873993.76	995546.57	3	540	874132.03	995503.26	3
483	873993.98	995548.28	3	541	874131.53	995503.25	3
484	873993.50	995548.11	3	542	874132.15	995507.45	3
485	873993.60	995548.96	3	543	874131.64	995507.26	3
486	873993.25	995548.57	3	544	874131.67	995507.77	3
487	873992.77	995549.32	3	545	874132.22	995508.45	3
488	873992.67	995548.82	3	546	874131.72	995508.44	3
489	873982.05	995549.47	3	547	874132.22	995510.79	3
490	873984.95	995548.91	3	548	874131.71	995510.78	3
491	873984.45	995548.92	3	549	874131.95	995520.98	3
492	873982.05	995548.97	3	550	874131.45	995520.98	3
493	873977.87	995549.35	3	551	874132.09	995525.62	3
494	873977.88	995548.85	3	552	874131.59	995525.37	3
495	873972.30	995549.40	3	553	874131.59	995525.87	3
496	873972.31	995548.90	3	554	874131.97	995532.65	3
497	873970.92	995549.32	3	555	874131.47	995532.71	3
498	873971.11	995548.83	3	556	874132.43	995534.43	3
499	873970.31	995548.83	3	557	874132.02	995534.87	3

**SEZNAM SOUŘADNIC (S-JTSK)**

Číslo bodu	Y	X	Kód kv.	Číslo bodu	Y	X	Kód kv.
558	874133.41	995534.61	3	617	874181.86	995527.80	3
559	874133.35	995535.11	3	618	874182.57	995528.91	3
560	874141.22	995535.12	3	619	874182.06	995528.91	3
561	874140.88	995535.57	3	620	874181.93	995532.57	3
562	874141.64	995536.01	3	621	874181.47	995532.30	3
563	874141.15	995536.14	3	622	874172.73	995532.91	3
564	874141.90	995538.57	3	623	874181.43	995532.80	3
565	874141.40	995538.60	3	624	874172.85	995532.40	3
566	874141.96	995540.69	3	625	874171.88	995532.48	3
567	874141.45	995540.69	3	626	874172.38	995532.17	3
568	874141.88	995543.47	3	627	874171.88	995527.35	3
569	874141.39	995543.31	3	628	874172.39	995527.24	3
570	874140.23	995544.47	3	629	874171.69	995526.93	3
571	874141.04	995544.48	3	630	874172.03	995526.46	3
572	874140.47	995544.85	3	631	874181.88	995545.89	3
573	874137.82	995498.57	3	632	874181.38	995544.96	3
574	874137.81	995499.08	3	633	874181.38	995545.46	3
575	874140.25	995498.42	3	634	874181.88	995553.05	3
576	874140.40	995498.91	3	635	874181.38	995553.03	3
577	874141.55	995497.77	3	636	874181.58	995556.04	3
578	874141.80	995498.20	3	637	874181.09	995555.89	3
579	874143.25	995496.62	3	638	874181.24	995556.64	3
580	874143.47	995497.07	3	639	874180.89	995556.26	3
581	874145.61	995495.90	3	640	874180.55	995556.96	3
582	874145.69	995496.39	3	641	874180.44	995556.46	3
583	874148.01	995495.82	3	642	874179.01	995556.92	3
584	874147.89	995496.33	3	643	874179.02	995556.41	3
585	874149.83	995496.78	3	644	874175.93	995556.93	3
586	874149.57	995497.21	3	645	874175.81	995556.43	3
587	874151.62	995498.06	3	646	874175.49	995557.17	3
588	874151.40	995498.52	3	647	874175.11	995556.80	3
589	874153.46	995498.57	3	648	874175.24	995557.65	3
590	874153.38	995499.07	3	649	874174.74	995557.52	3
591	874155.61	995498.70	3	650	874175.23	995560.45	3
592	874155.60	995499.20	3	651	874174.73	995560.40	3
593	874171.59	995498.88	3	652	874175.13	995562.58	3
594	874171.48	995499.37	3	653	874174.62	995562.54	3
595	874172.34	995499.24	3	654	874175.23	995567.57	3
596	874171.94	995499.60	3	655	874174.73	995567.73	3
597	874172.72	995500.31	3	656	874175.13	995569.24	3
598	874172.22	995500.40	3	657	874174.63	995569.29	3
599	874172.84	995505.51	3	658	874175.27	995569.66	3
600	874172.40	995508.01	3	659	874174.83	995569.95	3
601	874172.67	995508.69	3	660	874175.74	995570.07	3
602	874172.09	995508.46	3	661	874175.47	995570.49	3
603	874172.24	995508.95	3	662	874177.54	995570.95	3
604	874174.14	995506.24	3	663	874177.34	995571.41	3
605	874173.99	995506.73	3	664	874178.73	995571.40	3
606	874177.82	995506.52	3	665	874181.05	995572.77	3
607	874177.79	995507.02	3	666	874180.75	995573.18	3
608	874180.64	995506.63	3	667	874182.96	995574.43	3
609	874180.47	995507.12	3	668	874182.53	995574.72	3
610	874181.68	995507.37	3	669	874183.45	995575.83	3
611	874181.20	995507.64	3	670	874182.95	995575.91	3
612	874182.23	995516.07	3	671	874182.83	995589.72	3
613	874181.73	995516.09	3	672	874182.33	995589.65	3
615	874181.92	995523.47	3	673	874182.40	995591.44	3
616	874182.36	995527.83	3	674	874181.92	995591.30	3



**SEZNAM SOUŘADNIC (S-JTSK)**

Číslo bodu	Y	X	Kód kv.	Číslo bodu	Y	X	Kód kv.
675	874181.74	995593.30	3	733	874101.83	995580.99	3
676	874181.28	995593.09	3	734	874101.60	995583.94	3
677	874176.71	995602.72	3	735	874101.12	995583.79	3
678	874176.32	995602.38	3	736	874071.30	995664.76	3
679	874175.33	995603.66	3	737	874069.66	995665.61	3
680	874175.50	995602.94	3	738	874070.89	995665.09	3
681	874090.37	995511.21	3	739	874069.57	995665.10	3
682	874089.87	995510.94	3	740	874068.28	995665.52	3
683	874089.87	995511.44	3	741	874068.37	995665.02	3
684	874090.29	995525.55	3	742	874066.94	995665.09	3
685	874089.79	995525.28	3	743	874067.15	995664.63	3
686	874089.79	995525.78	3	744	874064.11	995663.26	3
687	874090.20	995533.54	3	745	874064.43	995662.87	3
688	874089.70	995533.59	3	746	874059.07	995658.28	3
689	874090.37	995534.38	3	747	874059.43	995657.94	3
690	874089.92	995534.65	3	748	874056.24	995655.04	3
691	874090.69	995534.64	3	749	874056.62	995654.71	3
692	874090.45	995535.10	3	750	874072.03	995666.47	3
693	874091.32	995534.81	3	751	874071.38	995666.23	3
694	874091.26	995535.31	3	752	874071.41	995666.70	3
695	874095.40	995534.79	3	753	874071.49	995667.54	3
696	874095.37	995535.29	3	754	874072.41	995666.82	3
697	874097.82	995535.04	3	755	874071.09	995667.23	3
698	874097.51	995535.51	3	756	874062.67	995676.84	3
699	874098.42	995536.08	3	757	874062.30	995676.50	3
700	874097.92	995536.22	3	758	874057.44	995682.71	3
701	874098.49	995547.37	3	759	874057.02	995682.98	3
702	874097.99	995547.39	3	760	874046.63	995693.56	3
703	874099.63	995551.51	3	761	874046.27	995693.22	3
704	874099.12	995551.53	3	762	874042.89	995697.67	3
705	874099.38	995558.54	3	763	874042.52	995697.33	3
706	874098.89	995558.28	3	764	874074.44	995665.11	3
707	874098.88	995558.78	3	765	874074.66	995665.56	3
708	874099.40	995569.46	3	766	874076.93	995664.14	3
709	874099.55	995570.52	3	767	874077.07	995664.62	3
710	874094.85	995570.64	3	768	874078.79	995663.76	3
711	874099.01	995570.58	3	769	874078.88	995664.25	3
712	874098.90	995570.08	3	770	874084.19	995662.93	3
713	874094.80	995570.14	3	771	874084.32	995663.41	3
714	874091.66	995571.11	3	772	874088.05	995661.53	3
715	874091.66	995570.60	3	773	874088.10	995662.05	3
716	874091.02	995571.02	3	774	874088.68	995661.66	3
717	874091.27	995570.55	3	775	874088.44	995662.12	3
718	874090.55	995570.47	3	776	874095.50	995667.89	3
719	874090.94	995570.15	3	777	874094.68	995667.87	3
720	874100.11	995571.53	3	778	874097.00	995669.40	3
721	874099.65	995571.72	3	779	874098.59	995670.73	3
722	874100.47	995572.82	3	780	874107.35	995679.01	3
723	874099.97	995572.92	3	781	874107.10	995679.47	3
724	874100.84	995575.75	3	782	874107.91	995679.61	3
725	874100.35	995575.90	3	783	874109.96	995681.54	3
726	874101.13	995576.29	3	784	874110.13	995682.16	3
727	874100.71	995576.58	3	785	874112.41	995683.78	3
728	874102.51	995577.80	3	786	874112.06	995684.14	3
729	874102.04	995578.03	3	787	874116.27	995687.30	3
730	874102.62	995578.50	3	788	874115.86	995687.61	3
731	874102.12	995578.51	3	789	874117.13	995689.07	3
732	874102.32	995581.08	3	790	874116.64	995689.22	3

**SEZNAM SOUŘADNIC (S-JTSK)**

Číslo bodu	Y	X	Kód kv.	Číslo bodu	Y	X	Kód kv.
791	874117.50	995691.44	3	849	873995.74	995735.07	5
792	874117.01	995691.50	3	850	873994.84	995736.15	3
793	874117.63	995693.17	3	851	873994.53	995735.75	3
794	874117.00	995694.03	3	852	873990.34	995740.79	3
795	874117.45	995694.41	3	853	873989.99	995740.44	3
796	874116.14	995696.54	3	854	873987.22	995743.71	3
797	874115.72	995696.27	3	855	873986.87	995743.35	3
798	874112.58	995701.78	3	856	873980.79	995750.23	3
799	874112.16	995701.51	3	857	873980.44	995749.87	3
800	874108.32	995708.74	3	858	873973.90	995756.83	6
801	874108.07	995708.21	3	859	873974.33	995755.73	3
802	874107.79	995708.63	3	860	873969.29	995761.44	6
803	874098.27	995722.29	3	861	873968.85	995761.36	3
804	874098.03	995721.78	3	862	873968.94	995761.80	6
805	874097.72	995722.18	3	863	873966.27	995764.87	3
806	874087.92	995735.91	3	864	873965.92	995764.51	3
807	874087.68	995735.40	3	865	873962.72	995768.12	3
808	874087.38	995735.80	3	866	873962.37	995767.76	3
809	874084.34	995740.68	3	867	873950.48	995781.53	3
810	874083.95	995740.38	3	868	873951.88	995779.32	3
811	874072.35	995756.02	3	869	873950.07	995781.25	3
812	874071.92	995755.76	3	870	873945.80	995786.73	3
813	874071.37	995758.32	3	871	873942.80	995787.86	3
814	874070.93	995758.08	3	872	873942.61	995787.39	3
815	874070.18	995760.02	3	873	873941.64	995788.68	3
816	874069.78	995759.71	3	874	873941.31	995788.30	3
817	874066.36	995764.28	3	875	873933.90	995797.17	3
818	874066.27	995763.63	3	876	873933.53	995796.84	3
819	874065.50	995763.12	3	877	873923.91	995808.50	3
820	874065.88	995764.00	3	878	873923.54	995808.16	3
821	874065.93	995762.85	3	879	873917.56	995815.01	3
822	874064.78	995762.32	3	880	873917.20	995814.67	3
823	874065.16	995762.00	3	881	873912.73	995820.33	3
824	874061.77	995758.46	3	882	873912.20	995820.18	3
825	874062.16	995758.14	3	883	873912.39	995820.69	3
826	874051.96	995746.53	3	884	873908.41	995824.59	3
827	874052.33	995746.19	3	885	873908.05	995824.24	3
828	874036.95	995732.07	3	886	873904.36	995828.93	3
829	874037.21	995731.63	3	887	873903.98	995828.61	3
830	874036.59	995731.72	3	888	873900.13	995834.16	3
831	874033.31	995728.51	3	889	873899.57	995834.06	3
832	874033.66	995728.14	3	890	873899.83	995834.56	3
833	874026.53	995722.37	3	891	873895.96	995839.93	3
834	874026.68	995721.83	3	892	873895.54	995839.66	3
835	874026.16	995722.02	3	893	873894.54	995842.23	3
836	874020.88	995716.82	3	894	873894.10	995841.98	3
837	874021.17	995716.41	3	895	873890.52	995849.80	3
838	874020.10	995716.40	3	896	873889.98	995849.76	3
839	874020.20	995715.89	3	897	873890.28	995850.24	3
840	874019.45	995716.47	3	898	873887.90	995854.54	3
841	874019.27	995715.98	3	899	873887.46	995854.30	3
842	874016.92	995718.30	3	900	873882.09	995865.44	4
843	874016.61	995717.91	3	901	873881.66	995864.86	3
844	874009.65	995724.46	5	902	873879.38	995869.56	3
845	874009.28	995724.12	5	903	873878.95	995869.31	3
846	873997.11	995735.10	6	904	873876.04	995875.47	3
847	873996.79	995734.72	3	905	873875.61	995875.22	3
848	873995.87	995735.55	3	906	873871.92	995882.47	3

**SEZNAM SOUŘADNIC (S-JTSK)**

Číslo bodu	Y	X	Kód kv.	Číslo bodu	Y	X	Kód kv.
907	873871.49	995882.20	3	965	873797.68	995976.51	3
908	873867.05	995889.84	3	966	873796.95	995976.68	5
909	873866.61	995889.59	3	967	873797.11	995977.24	3
910	873866.02	995892.08	3	968	873797.37	995980.10	3
911	873865.54	995891.94	3	969	873796.88	995979.96	3
912	873865.58	995894.97	4	970	873796.74	995981.33	3
913	873865.08	995895.08	3	971	873796.31	995981.09	3
914	873866.53	995897.11	3	972	873789.66	995992.70	3
915	873866.06	995897.29	3	973	873789.36	995992.22	3
916	873866.84	995898.05	3	974	873789.10	995992.65	3
917	873866.33	995898.09	3	975	873784.69	996001.06	3
918	873866.58	995899.15	3	976	873784.39	996000.59	3
919	873866.19	995898.81	3	977	873781.67	995999.56	3
920	873863.16	995906.30	3	978	873784.13	996001.02	3
921	873862.88	995905.73	3	979	873781.92	995999.13	3
922	873862.66	995906.81	3	980	873772.07	996021.57	3
923	873862.50	995906.20	3	981	873771.77	996021.10	3
924	873861.82	995907.34	3	982	873771.50	996021.53	3
925	873861.63	995906.87	3	983	873767.98	996027.94	3
926	873860.75	995907.57	3	984	873767.56	996027.67	3
927	873860.68	995907.08	3	985	873762.21	996037.33	3
928	873856.87	995907.86	3	986	873761.79	996037.06	3
929	873857.26	995907.26	3	987	873754.50	996049.44	3
930	873855.96	995908.11	3	988	873754.22	996048.96	3
931	873855.77	995907.64	3	989	873753.95	996049.38	3
932	873855.28	995908.50	3	990	873748.89	996058.05	3
933	873854.92	995908.13	3	991	873748.47	996057.78	3
934	873851.73	995914.49	3	992	873758.56	995986.02	3
935	873851.30	995914.24	3	993	873760.22	995987.62	3
936	873841.87	995930.67	3	994	873760.57	995987.26	3
937	873841.56	995930.26	3	995	873758.55	995985.32	3
938	873840.96	995930.49	3	996	873758.03	995986.53	3
939	873830.88	995927.09	3	997	873757.64	995986.21	3
940	873841.48	995931.27	3	998	873756.09	995989.54	3
941	873831.01	995926.60	3	999	873755.79	995989.08	3
942	873830.11	995927.00	3	1000	873755.45	995989.63	3
943	873830.05	995926.49	3	1001	873755.51	995989.12	3
944	873829.21	995927.48	3	1002	873752.27	995988.40	3
945	873829.39	995926.73	3	1003	873752.44	995987.93	3
946	873828.99	995927.02	3	1004	873749.10	995987.43	3
947	873828.68	995927.42	3	1005	873749.25	995986.95	3
948	873828.18	995929.52	3	1006	873842.64	995931.60	3
949	873827.74	995929.28	3	1007	873842.35	995932.01	3
950	873824.22	995936.26	3	1008	873854.94	995939.08	3
951	873823.79	995936.00	3	1009	873854.68	995939.51	3
952	873819.38	995944.48	3	1010	873870.06	995948.15	3
953	873818.96	995944.22	3	1011	873869.81	995948.57	3
954	873816.62	995948.88	3	1012	873876.83	995952.91	3
955	873816.32	995948.42	3	1013	873878.61	995952.74	3
956	873816.07	995948.85	3	1014	873877.59	995953.14	3
957	873814.49	995952.89	3	1015	873878.64	995953.24	3
958	873814.08	995952.60	3	1016	873888.86	995950.68	3
959	873809.59	995958.15	3	1017	873888.73	995951.21	3
960	873809.21	995957.82	3	1018	873889.23	995951.11	3
961	873808.21	995959.90	3	1019	873890.56	995956.63	3
962	873807.80	995959.61	3	1020	873890.07	995956.75	3
963	873804.01	995966.77	3	1021	873897.42	995948.98	3
964	873803.59	995966.50	3	1022	873897.50	995949.47	3

**SEZNAM SOUŘADNIC (S-JTSK)**

Číslo bodu	Y	X	Kód kv.	Číslo bodu	Y	X	Kód kv.
1023	873909.05	995954.89	3	1081	873853.99	996023.56	3
1024	873908.57	995954.95	3	1082	873855.18	996023.16	3
1025	873875.59	995953.95	3	1083	873855.06	996023.66	3
1026	873875.31	995953.52	3	1084	873856.06	996023.55	3
1027	873874.66	995954.86	3	1085	873855.93	996024.20	3
1028	873874.29	995954.53	3	1086	873857.46	996028.43	3
1029	873873.60	995956.23	3	1087	873856.98	996028.54	3
1030	873873.19	995955.95	3	1088	874063.28	995766.44	3
1031	873865.51	995969.29	3	1089	874062.97	995766.04	3
1032	873865.08	995969.04	3	1090	874059.98	995769.31	3
1033	873860.04	995979.50	3	1091	874059.85	995768.76	3
1034	873859.58	995979.30	3	1092	874059.48	995769.10	3
1035	873859.72	995980.52	3	1093	874056.20	995772.82	3
1036	873859.26	995980.30	3	1094	874055.88	995772.44	3
1037	873858.59	995982.27	3	1095	874048.21	995778.78	3
1038	873858.15	995982.03	3	1096	874047.91	995778.37	3
1039	873853.72	995991.84	3	1097	874033.56	995789.44	3
1040	873853.34	995991.49	3	1098	874033.19	995789.10	3
1041	873859.93	995990.72	3	1099	874033.30	995789.87	3
1042	873853.29	995992.43	3	1100	874033.42	995790.31	3
1043	873860.03	995991.21	3	1101	874032.49	995790.69	3
1044	873864.07	995989.75	3	1102	874033.16	995790.76	3
1045	873864.91	995993.27	3	1103	874031.87	995790.83	3
1046	873864.42	995993.35	3	1104	874032.53	995790.17	3
1047	873880.56	995986.08	3	1105	874031.66	995790.37	3
1048	873880.54	995986.60	3	1106	874028.68	995793.09	3
1049	873881.18	995986.28	3	1107	874028.57	995792.55	3
1050	873881.11	995986.97	3	1108	874028.17	995792.85	3
1051	873852.87	995992.12	3	1109	874019.26	995800.40	3
1052	873851.11	995994.07	3	1110	874018.98	995799.99	3
1053	873850.78	995993.70	3	1111	874013.71	995803.82	3
1054	873849.89	995995.36	3	1112	874013.47	995803.38	3
1055	873849.49	995995.04	3	1113	873999.84	995810.35	3
1056	873842.92	996005.61	3	1114	873999.63	995809.89	3
1057	873842.50	996005.33	3	1115	873995.94	995812.12	3
1058	873833.66	996020.43	3	1116	873995.84	995811.61	3
1059	873833.23	996020.16	3	1117	873994.88	995812.04	3
1060	873832.04	996023.08	3	1118	873995.08	995811.56	3
1061	873831.56	996022.90	3	1119	873994.06	995811.31	3
1062	873831.88	996024.02	3	1120	873994.56	995811.09	3
1063	873831.35	996024.12	3	1121	873993.99	995806.63	3
1064	873832.33	996024.74	3	1122	873994.49	995806.62	3
1065	873831.97	996025.10	3	1123	874034.48	995790.56	3
1066	873832.93	996025.13	3	1124	874033.92	995790.98	3
1067	873832.74	996025.60	3	1125	874040.05	995794.41	3
1068	873835.42	996025.66	3	1126	874039.76	995794.81	3
1069	873835.35	996026.15	3	1127	874079.96	995825.31	3
1070	873837.30	996025.78	3	1128	874079.62	995825.68	3
1071	873837.09	996026.27	3	1129	874083.90	995829.71	3
1072	873837.61	996026.27	3	1130	874083.52	995830.03	3
1073	873837.40	996027.49	3	1131	874087.39	995834.52	3
1074	873838.95	996030.29	3	1132	874086.94	995834.75	3
1075	873838.48	996030.47	3	1133	874088.05	995836.44	3
1076	873839.63	996025.71	3	1134	874087.56	995836.56	3
1077	873839.69	996026.21	3	1135	874087.32	995837.08	3
1078	873847.73	996024.23	3	1136	874095.19	995830.23	3
1079	873847.83	996024.72	3	1137	874087.68	995837.42	3
1080	873853.97	996023.06	3	1138	874095.71	995830.44	3

**SEZNAM SOUŘADNIC (S-JTSK)**

Číslo bodu	Y	X	Kód kv.	Číslo bodu	Y	X	Kód kv.
1139	874095.58	995829.91	3	1197	874024.04	995898.95	3
1140	874100.13	995826.35	3	1198	874020.44	995904.07	3
1141	874100.44	995826.74	3	1199	874020.05	995903.76	3
1142	874113.18	995815.57	3	1200	874010.26	995917.10	3
1143	874113.50	995815.96	3	1201	874010.02	995916.59	3
1144	874126.17	995804.92	3	1202	874009.72	995916.98	3
1145	874126.69	995805.14	3	1203	874007.43	995920.66	3
1146	874126.56	995804.59	3	1204	874007.03	995920.35	3
1147	874137.56	995795.14	3	1205	873997.51	995934.11	3
1148	874137.89	995795.52	3	1206	873997.25	995933.62	3
1149	874149.98	995784.75	3	1207	873996.95	995934.02	3
1150	874150.30	995785.13	3	1208	873989.92	995944.14	3
1151	874158.28	995777.66	3	1209	873989.53	995943.83	3
1152	874158.60	995778.04	3	1210	873978.37	995958.76	3
1153	874164.03	995772.83	3	1211	873978.15	995958.24	3
1154	874164.57	995773.02	3	1212	873977.84	995958.63	3
1155	874164.37	995772.47	3	1213	873975.39	995962.80	3
1156	874165.78	995770.68	3	1214	873975.00	995962.50	3
1157	874166.16	995771.01	3	1215	873969.48	995970.39	3
1158	874168.11	995768.21	3	1216	873969.05	995970.13	3
1159	874168.50	995768.53	3	1217	873968.69	995972.09	3
1160	874168.89	995767.17	3	1218	873968.21	995971.94	3
1161	874169.29	995767.47	3	1219	873968.29	995974.42	3
1162	874077.46	995846.20	3	1220	873967.81	995974.29	3
1163	874077.14	995845.82	3	1221	873967.66	995976.27	3
1164	874064.48	995857.08	3	1222	873967.22	995976.02	3
1165	874064.14	995856.72	3	1223	873965.36	995979.01	3
1166	874061.35	995860.26	3	1224	873964.97	995978.69	3
1167	874061.01	995859.89	3	1225	873956.75	995989.86	3
1168	874058.65	995862.53	3	1226	873956.37	995989.54	3
1169	874058.31	995862.16	3	1227	873953.32	995993.87	3
1170	874052.95	995868.15	3	1228	873953.08	995993.38	3
1171	874052.58	995867.82	3	1229	873952.77	995993.76	3
1172	874051.40	995870.07	3	1230	873944.22	996005.39	3
1173	874057.71	995874.58	3	1231	873943.81	996005.09	3
1174	874051.08	995870.46	3	1232	873938.15	996014.17	3
1175	874057.53	995875.06	3	1233	873937.83	996013.76	3
1176	874059.78	995874.78	3	1234	873936.85	996014.11	6
1177	874058.79	995875.18	3	1235	873937.53	996014.22	3
1178	874059.74	995875.16	3	1236	873937.14	996013.70	6
1179	874067.35	995881.36	3	1237	873936.57	996016.71	3
1180	874066.51	995881.32	3	1238	873936.15	996016.44	3
1181	874044.86	995878.32	3	1239	873932.06	996023.25	3
1182	874044.47	995878.00	3	1240	873931.65	996022.96	3
1183	874036.62	995887.81	3	1241	873922.61	996036.27	3
1184	874036.33	995887.38	3	1242	873922.20	996035.98	3
1185	874035.00	995888.35	6	1243	873917.37	996043.65	3
1186	874035.33	995887.86	6	1244	873917.08	996043.19	3
1187	874033.74	995887.99	3	1245	873912.44	996040.52	3
1188	874033.85	995887.50	3	1246	873916.85	996043.64	3
1189	874032.36	995888.34	6	1247	873913.13	996040.40	3
1190	874033.11	995887.61	3	1248	873916.92	996045.16	3
1191	874031.97	995888.03	6	1249	873916.46	996044.94	3
1192	874031.92	995886.82	3	1250	873914.43	996048.73	3
1193	874032.23	995886.43	3	1251	873914.15	996048.26	3
1194	874030.42	995885.52	3	1252	873913.46	996048.44	3
1195	874030.75	995885.14	3	1253	873913.86	996048.67	3
1196	874024.43	995899.26	3	1254	873913.70	996048.01	3

**SEZNAM SOUŘADNIC (S-JTSK)**

Číslo bodu	Y	X	Kód kv.	Číslo bodu	Y	X	Kód kv.
1255	873903.66	996063.95	3	1313	873797.51	996184.34	3
1256	873903.25	996063.66	3	1314	873797.77	996185.24	3
1257	873887.44	996086.69	3	1315	873797.30	996185.09	3
1258	873886.96	996086.49	3	1316	873796.12	996189.96	3
1259	873887.24	996087.86	3	1317	873795.64	996189.80	3
1260	873886.76	996087.72	3	1318	873793.00	996199.18	3
1261	873886.92	996088.64	3	1319	873792.52	996199.02	3
1262	873886.48	996088.39	3	1320	873789.53	996209.61	3
1263	873883.80	996092.79	3	1321	873789.06	996209.44	3
1264	873883.43	996092.46	3	1322	873786.85	996216.39	3
1265	873875.31	996100.54	3	1323	873786.38	996216.21	3
1266	873874.97	996100.17	3	1324	873777.33	996238.99	3
1267	873863.84	996111.35	3	1325	873776.87	996238.79	3
1268	873863.50	996110.99	3	1326	873772.62	996249.81	3
1269	873855.42	996119.25	3	1327	873772.07	996249.83	3
1270	873855.07	996118.90	3	1329	873772.42	996250.27	3
1271	873851.37	996123.45	3	1331	873762.28	996271.99	3
1272	873851.03	996123.08	3	1332	873761.73	996271.98	3
1273	873847.80	996126.50	3	1333	873762.07	996272.44	3
1274	873847.49	996126.11	3	1334	873759.46	996278.19	3
1275	873842.66	996130.11	3	1335	873759.00	996277.98	3
1276	873842.41	996129.68	3	1336	873756.59	996284.64	3
1277	873837.55	996132.66	3	1337	873756.02	996284.67	3
1278	873837.35	996132.19	3	1338	873756.91	996284.77	3
1279	873828.53	996135.70	3	1339	873756.38	996285.10	3
1280	873828.38	996135.23	3	1340	873756.73	996285.23	3
1281	873817.79	996138.97	3	1341	873752.18	996294.19	3
1282	873817.65	996138.49	3	1342	873751.62	996294.19	3
1283	873813.40	996140.25	3	1343	873751.96	996294.64	3
1284	873813.26	996139.77	3	1344	873745.34	996308.22	3
1285	873811.91	996140.68	3	1345	873744.79	996308.22	3
1286	873811.61	996140.25	3	1346	873745.88	996308.51	3
1287	873811.42	996141.36	3	1347	873745.13	996308.67	3
1288	873810.94	996141.17	3	1348	873745.64	996308.95	3
1289	873811.32	996142.15	3	1349	873744.01	996311.15	3
1290	873810.81	996142.17	3	1350	873743.68	996310.67	3
1291	873812.61	996148.93	3	1351	873743.20	996312.56	3
1292	873812.45	996149.96	3	1352	873743.45	996311.12	3
1293	873811.97	996149.76	3	1353	873742.24	996314.91	3
1294	873811.56	996151.17	3	1354	873741.52	996315.46	3
1295	873809.13	996154.64	3	1355	873742.13	996315.51	3
1296	873808.69	996154.40	3	1356	873741.50	996316.07	3
1297	873807.60	996158.52	3	1357	873742.05	996316.02	3
1298	873807.05	996158.56	3	1358	873740.01	996317.06	3
1299	873808.09	996158.74	3	1359	873739.73	996316.64	3
1300	873807.43	996158.99	3	1360	873737.86	996307.25	3
1301	873807.91	996159.21	3	1361	873737.09	996307.28	3
1302	873805.34	996164.76	3	1362	873737.37	996306.86	3
1303	873804.79	996164.82	3	1363	873735.73	996308.78	3
1304	873805.17	996165.23	3	1364	873736.85	996306.80	3
1305	873803.04	996170.93	3	1365	873735.42	996308.38	3
1306	873802.57	996170.75	3	1366	873734.20	996309.58	3
1307	873800.30	996178.12	3	1367	873734.10	996309.07	3
1308	873799.74	996178.19	3	1368	873730.81	996309.32	3
1309	873800.76	996178.25	3	1369	873730.93	996308.83	3
1310	873800.13	996178.59	3	1370	873728.57	996308.41	3
1311	873800.62	996178.73	3	1371	873728.75	996307.95	3
1312	873797.99	996184.49	3	1372	873742.49	996295.10	3

**SEZNAM SOUŘADNIC (S-JTSK)**

Číslo bodu	Y	X	Kód kv.	Číslo bodu	Y	X	Kód kv.
1373	873743.04	996295.12	3	1433	873716.19	996479.79	3
1374	873742.71	996294.65	3	1434	873715.75	996479.55	3
1375	873744.62	996290.55	3	1435	873709.06	996493.17	3
1376	873745.19	996290.52	3	1436	873708.72	996492.74	3
1378	873746.56	996286.49	3	1437	873708.39	996494.44	3
1380	873747.01	996286.70	3	1438	873707.42	996495.47	3
1381	873752.59	996273.28	3	1439	873705.23	996496.64	3
1382	873753.05	996273.49	3	1440	873702.92	996499.62	3
1383	873759.33	996258.37	3	1441	873702.70	996499.08	3
1384	873759.78	996258.57	3	1442	873702.04	996499.49	3
1385	873763.59	996324.83	3	1443	873702.19	996499.01	3
1386	873763.37	996325.28	3	1444	873699.83	996497.89	3
1387	873766.55	996326.41	3	1445	873697.64	996497.82	3
1388	873765.78	996326.56	3	1446	873697.76	996497.33	3
1389	873767.32	996327.85	3	1447	873693.51	996495.37	3
1390	873768.25	996330.56	3	1448	873693.44	996494.75	3
1391	873768.75	996330.50	3	1449	873693.07	996495.12	3
1392	873768.09	996327.43	3	1450	873686.90	996491.58	3
1393	873764.55	996324.09	3	1451	873687.11	996491.12	3
1394	873765.03	996323.89	3	1452	873682.04	996489.83	3
1395	873764.46	996322.97	3	1453	873682.18	996489.35	3
1396	873764.96	996322.93	3	1454	873677.03	996488.71	3
1397	873768.62	996337.19	3	1455	873677.09	996488.21	3
1398	873768.12	996337.19	3	1456	873671.00	996488.56	3
1399	873768.81	996341.60	3	1457	873670.94	996488.06	3
1400	873768.30	996341.36	3	1458	873668.42	996489.27	3
1401	873767.83	996341.87	3	1459	873668.24	996488.80	3
1402	873768.30	996341.86	3	1460	873665.70	996490.20	3
1403	873767.82	996341.37	3	1461	873661.99	996496.96	3
1404	873768.54	996347.82	3	1462	873661.52	996496.79	3
1405	873768.04	996347.80	3	1463	873659.56	996501.52	3
1406	873768.01	996356.86	3	1464	873659.13	996501.26	3
1407	873767.52	996356.81	3	1465	873657.21	996504.93	3
1408	873767.15	996362.55	3	1466	873656.95	996504.43	3
1409	873766.62	996362.71	3	1467	873654.91	996503.96	3
1410	873767.50	996362.62	3	1468	873656.71	996504.86	3
1411	873767.07	996363.05	3	1469	873655.14	996503.51	3
1412	873767.40	996363.11	3	1470	873657.21	996505.88	3
1413	873766.03	996368.47	3	1471	873656.71	996505.88	3
1414	873765.54	996368.36	3	1892	873758.81	995985.57	3
1415	873763.72	996377.78	3	1896	873951.58	995779.80	3
1416	873763.23	996377.65	3	1897	873952.50	995778.69	3
1417	873760.82	996387.84	3	1898	873865.25	995895.46	4
1418	873760.35	996387.69	3	1899	873831.36	995927.28	3
1419	873755.68	996401.55	3	1900	873831.62	995926.84	3
1420	873755.21	996401.36	3	1901	873832.07	995927.56	3
1421	873751.07	996413.10	3	1902	873832.35	995927.12	3
1422	873750.61	996412.90	3	1903	873873.75	995879.35	4
1423	873748.15	996419.63	3	1904	873873.98	995877.99	4
1424	873747.70	996419.43	3	1905	873838.11	995929.94	3
1425	873744.79	996426.01	3	1906	873838.39	995929.48	3
1426	873744.60	996426.86	3	1907	873665.29	996490.78	3
1427	873742.93	996430.78	3	1908	873743.07	996310.89	3
1428	873742.49	996430.54	3	1909	873743.29	996310.45	3
1429	873738.45	996439.24	3	1910	874094.26	995603.51	3
1430	873738.02	996439.00	3	1911	874093.76	995603.46	3
1431	873731.38	996452.05	3	1912	874044.14	995797.57	3
1432	873730.94	996451.81	3	1913	874043.72	995797.88	3

### SEZNAM SOUŘADNIC (S-JTSK)

Číslo bodu	Y	X	Kód kv.	Číslo bodu	Y	X	Kód kv.
1914	874050.17	995802.24	3	1992	874099.05	995590.73	3
1915	874049.63	995802.46	3	1993	874098.53	995590.70	3
1916	874074.77	995655.50	3	1994	873881.24	995987.51	3
1917	874065.85	995664.39	6	1995	873853.97	995991.35	3
1918	874066.21	995664.02	6	1996	873859.18	995981.35	3
1919	874093.53	995605.46	3	1997	873876.34	995952.60	3
1920	874093.04	995605.40	3	1998	873840.68	995930.95	3
1921	874072.48	995660.26	3	1999	874120.78	995426.17	3
1922	874073.28	995659.47	3	2000	874107.19	995401.85	3
1923	874067.42	995665.24	3	2001	874113.46	995426.15	3
1924	874067.82	995664.85	3	2002	874113.47	995425.64	3
1925	874080.58	995640.01	6	2003	873885.20	996090.92	3
1926	874080.30	995639.44	6	2004	873884.80	996090.63	3
1927	874097.53	995722.02	3	2005	874163.54	995772.32	3
1928	874097.83	995721.62	3	2006	874163.91	995771.98	3
1929	874087.19	995735.65	3	2007	874087.75	995835.58	3
1930	874087.49	995735.25	3	2008	874087.34	995835.92	3
1931	874046.96	995741.71	5	2009	874094.77	995829.80	3
1932	874047.31	995741.35	5	2010	874095.16	995829.48	3
1933	873950.88	995780.01	3	2011	873812.53	996148.50	3
1934	873951.09	995780.58	3	2012	873811.38	996141.68	3
1935	873956.23	995774.83	6	2013	873810.86	996141.77	3
1936	873773.06	996250.01	3	2014	874001.49	995519.86	3
1937	873772.87	996250.47	3	2015	874001.99	995519.86	3
1938	873742.66	996313.87	3	2016	874001.56	995521.94	3
1939	873740.81	996316.53	3	2017	874002.06	995521.94	3
1940	873740.29	996316.27	3	2018	873984.17	995549.44	3
1941	873742.62	996315.72	3	2019	873984.18	995548.92	3
1942	873742.38	996316.16	3	2020	874036.36	995484.44	3
1961	873662.95	996494.12	3	2021	874036.37	995483.94	3
1962	873705.98	996495.74	5	2022	874052.51	995370.55	3
1963	873706.42	996496.01	5	2023	874052.52	995370.05	3
1964	873769.85	996020.62	5	2024	874049.29	995370.56	3
1965	873770.11	996020.20	5	2025	874049.29	995370.06	3
1966	873796.68	995977.12	5	2026	874051.48	995460.37	3
1967	873787.79	995991.80	5	2027	874051.49	995459.87	3
1968	873788.05	995991.37	5	2028	874048.52	995484.23	3
1969	873782.72	996000.18	5	2029	874054.38	995460.43	3
1970	873782.98	995999.76	5	2030	874054.38	995459.93	3
1973	873810.31	996152.96	3	2050	874124.90	995423.50	3
1974	874082.82	995634.02	8	2051	874125.88	995422.99	3
1975	874082.54	995633.45	8	2052	873744.96	996289.84	3
1976	874065.11	995813.81	8	2053	873945.26	995786.84	3
1977	874064.57	995814.03	8	2564	874107.83	995679.02	3
1978	874102.48	995352.61	3	2565	874108.40	995679.29	3
1979	874089.89	995454.01	3	2566	874110.38	995681.18	3
1980	874089.39	995454.01	3	2567	874110.55	995681.82	3
1981	874171.88	995529.11	3	2568	874085.51	995460.56	3
1982	874172.38	995529.04	3	2569	874083.81	995460.52	3
1983	874181.38	995545.88	3	2570	874083.81	995461.02	3
1984	874181.88	995547.98	3	2571	874089.44	995479.18	3
1985	874181.38	995547.98	3	2572	874089.94	995479.19	3
1986	874101.70	995576.91	3	2573	874090.00	995481.56	3
1987	874101.66	995577.61	3	2574	874089.50	995481.56	3
1988	874067.45	995460.69	3	2575	874090.29	995493.55	3
1989	874067.46	995460.19	3	2576	874089.79	995493.55	3
1990	874071.08	995460.76	3	2577	874090.31	995495.90	3
1991	874071.08	995460.26	3	2578	874089.81	995495.90	3



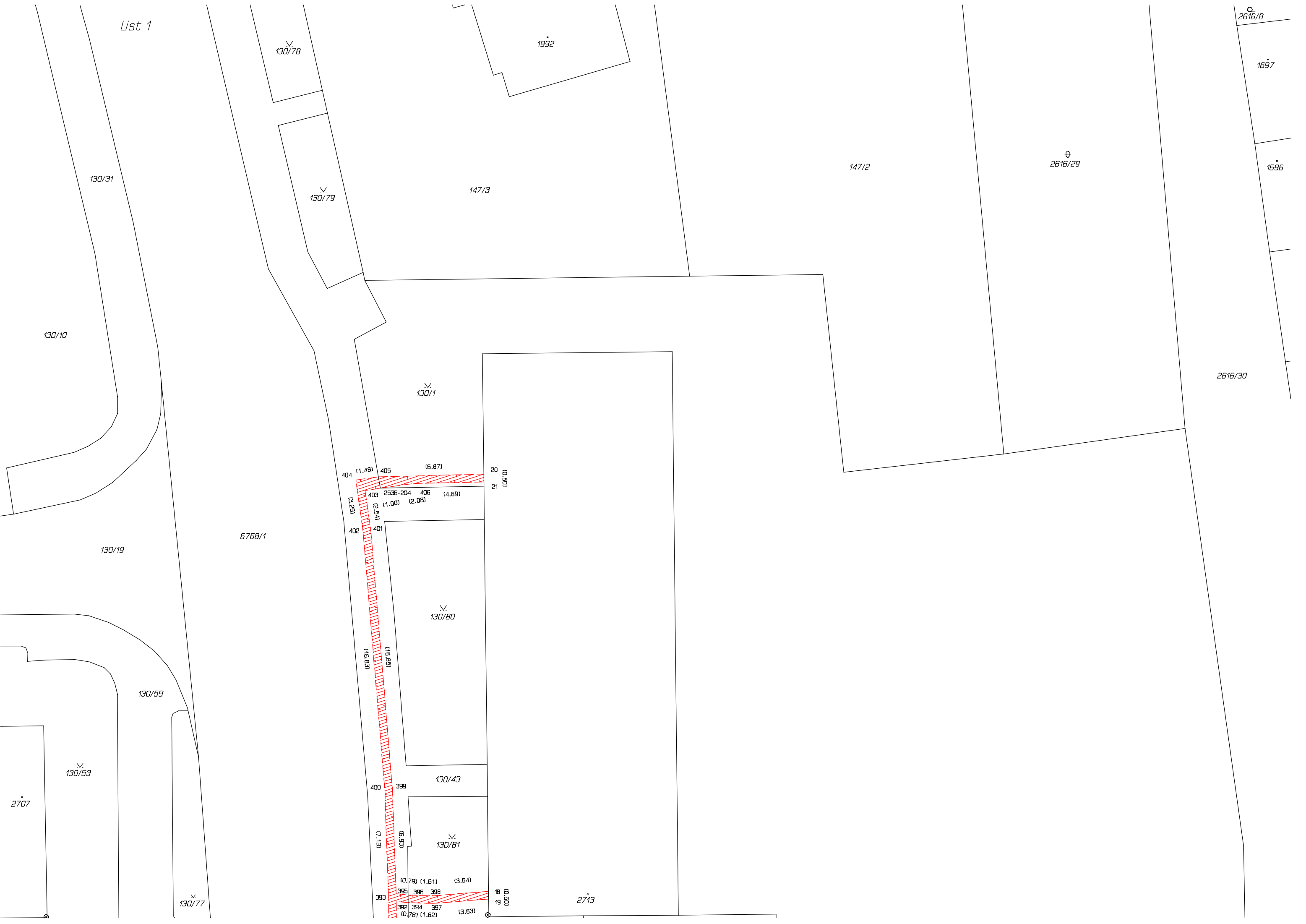
**SEZNAM SOUŘADNIC (S-JTSK)**

<b>Číslo bodu</b>	<b>Y</b>	<b>X</b>	<b>Kód kv.</b>	<b>Číslo bodu</b>	<b>Y</b>	<b>X</b>	<b>Kód kv.</b>
2579	874090.36	995511.89	3				
2580	874089.86	995511.88	3				
2581	874090.35	995514.22	3				
2582	874089.85	995514.22	3				
2583	874090.28	995526.27	3				
2584	874089.78	995526.26	3				
2585	874090.26	995528.58	3				
2586	874089.76	995528.57	3				
2587	874098.47	995545.06	3				
2588	874097.97	995545.08	3				
2589	874099.38	995561.76	3				
2590	874098.88	995561.78	3				
2591	874092.86	995501.08	3				
2592	874092.86	995501.58	3				
2593	874095.41	995501.02	3				
2594	874095.40	995501.52	3				
2595	874131.58	995526.61	3				
2596	874132.08	995526.60	3				
2597	874131.54	995528.78	3				
2598	874132.04	995528.78	3				
2599	874135.48	995498.44	3				
2600	874135.48	995498.97	3				

Přehled grafické části



List 1



130/78

1992

2616/8

1697

130/31

130/79

147/3

147/2

2616/29

1696

130/10

2616/30

130/1

404 (1.48) 405 (6.87) 20 (05'0")  
 403 2536-204 406 (4.69) 21 (05'0")  
 (3.29) 403 (1.00) (2.08)

130/19

6768/1

402 401

130/80

(6.83) (6.83)

130/59

130/53

400 399 130/43

130/81

2707

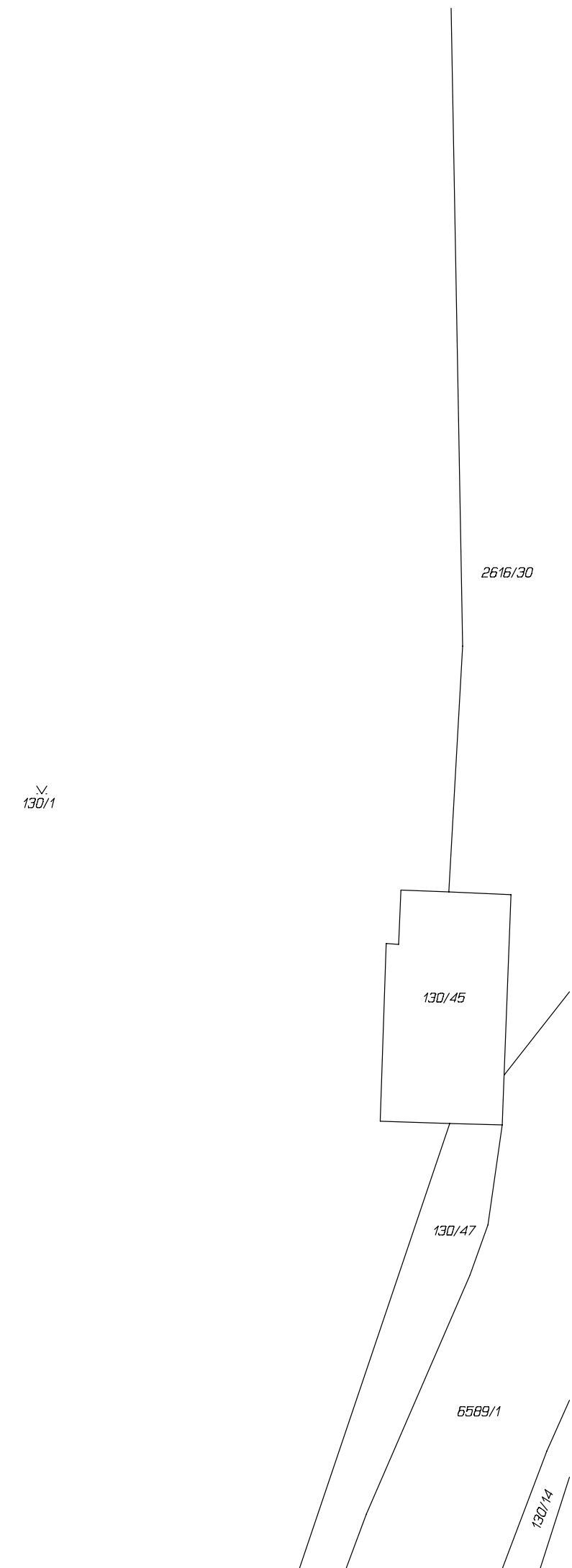
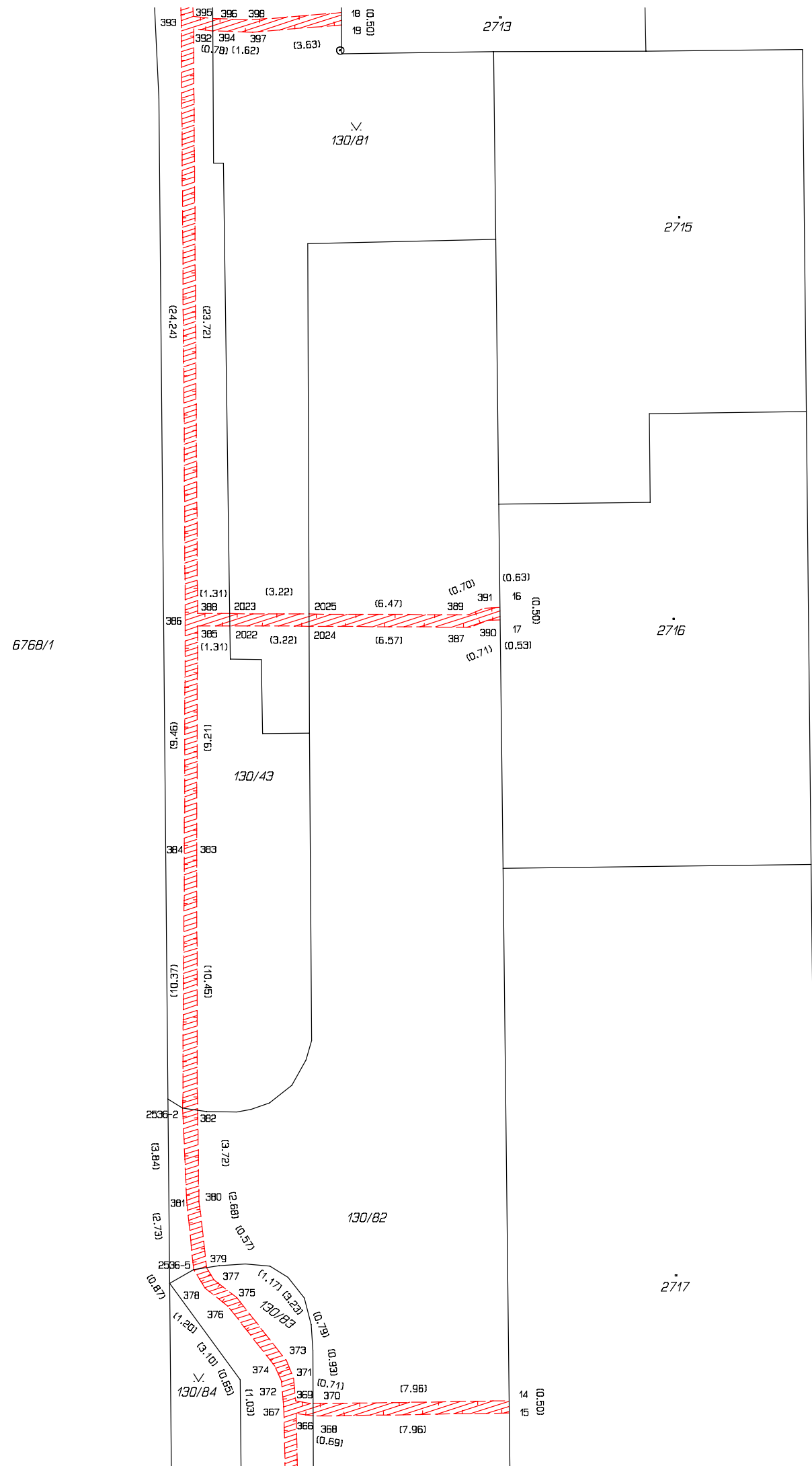
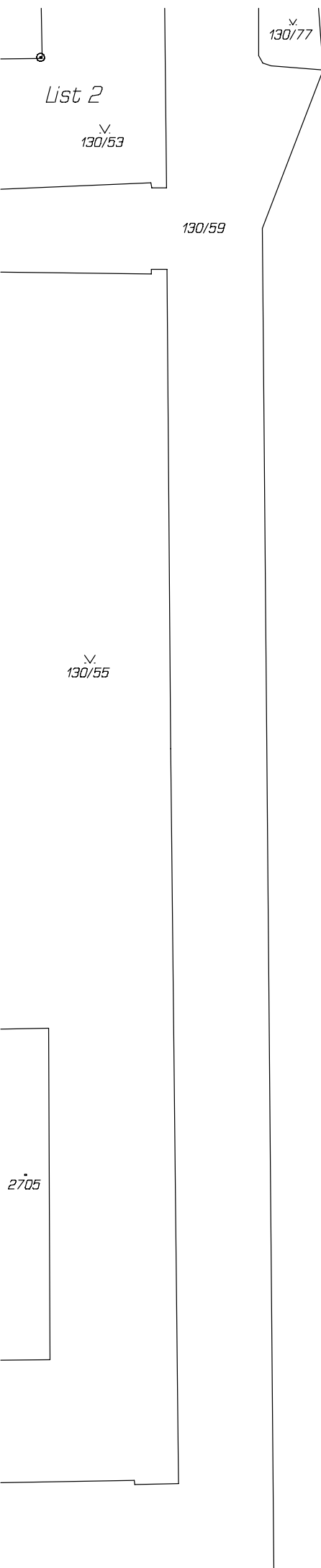
(7.13) (6.53)

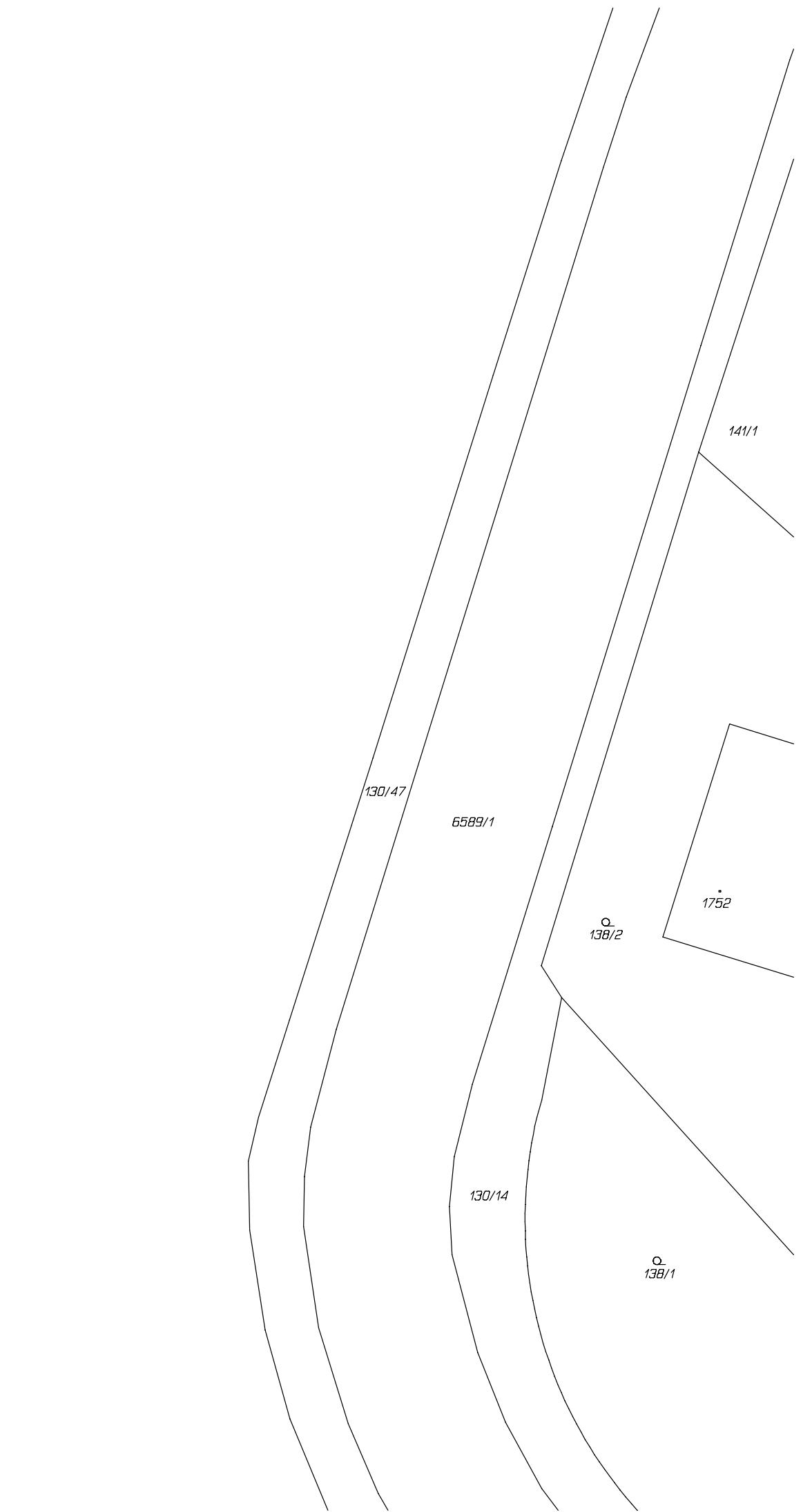
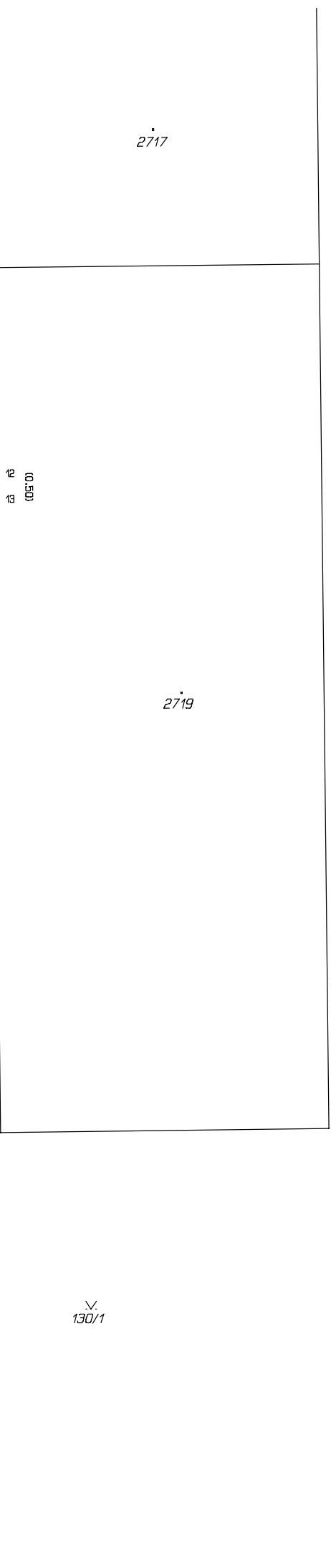
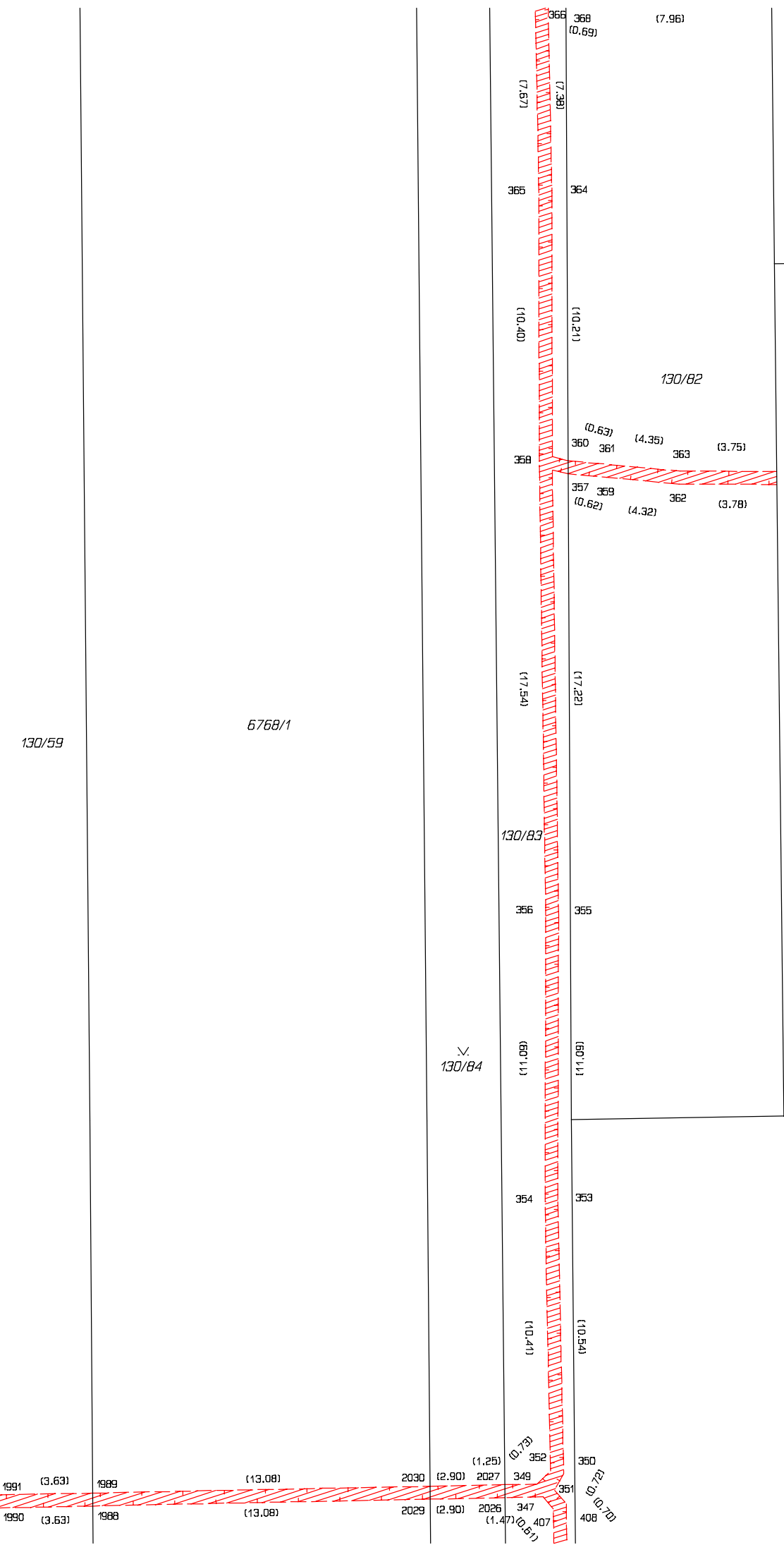
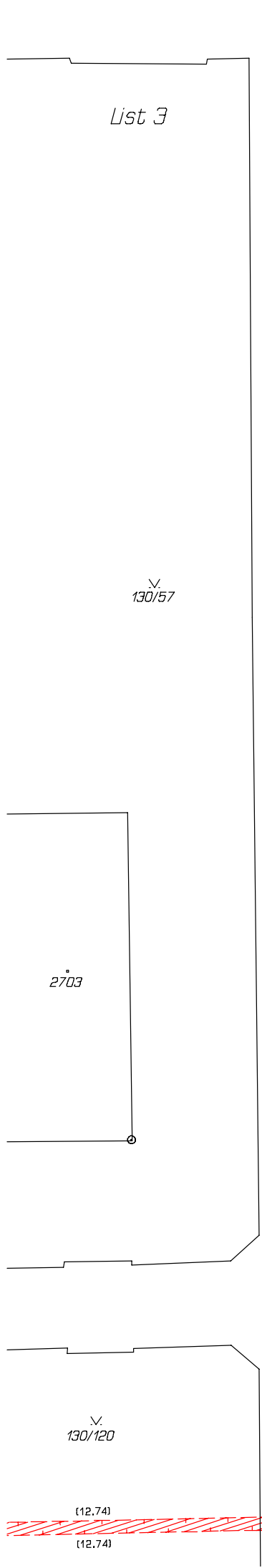
130/77

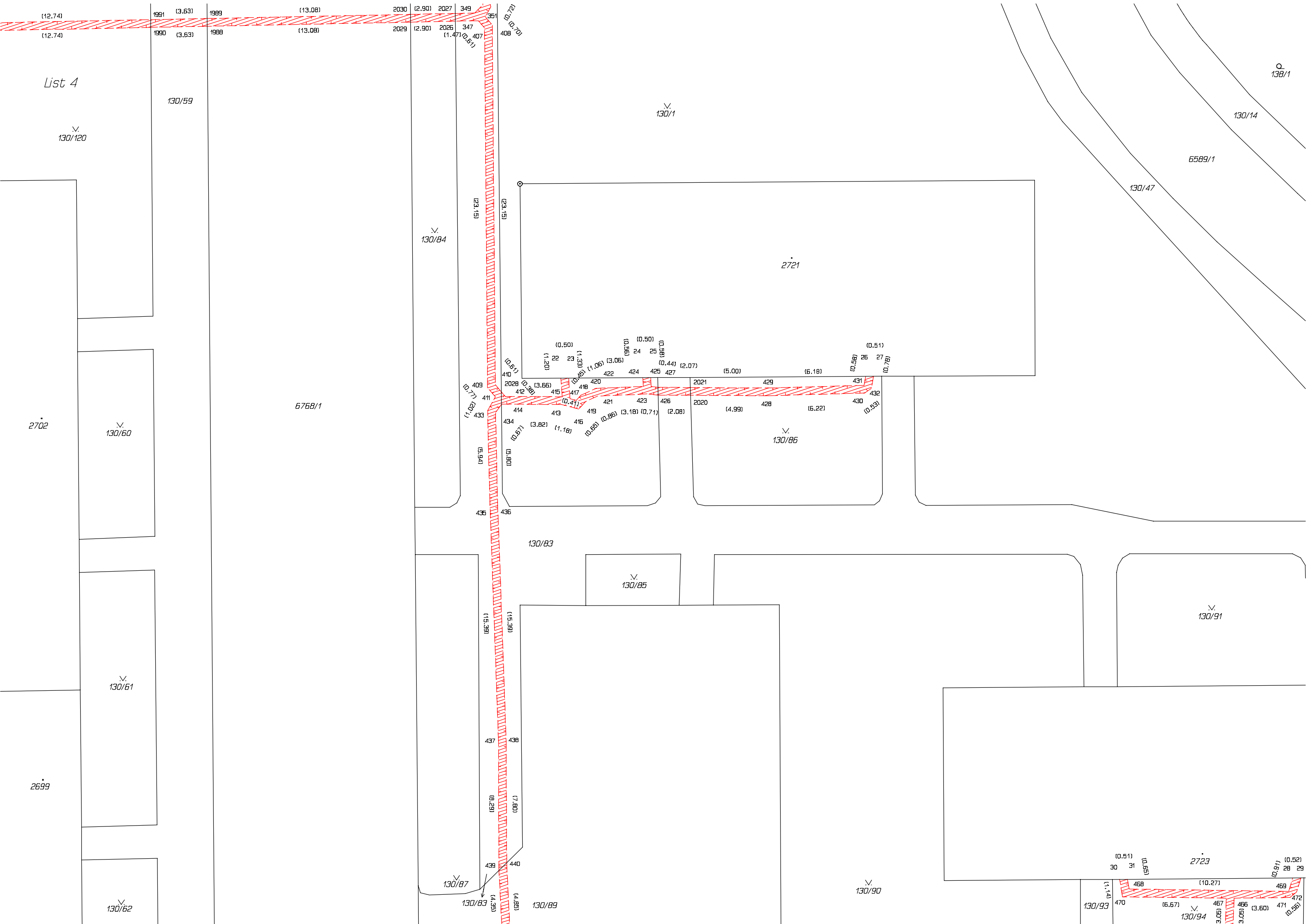
(0.79) (1.61) (3.64)  
 395 396 398  
 (0.78) (1.62) (3.63)

2713

18 (05'0")  
19 (05'0")







(12.74)

(12.74)

1991 (3.63)

1990 (3.63)

1989

1988

(13.08)

(13.08)

2030 (2.90)

2029 (2.90)

2027 349

2026 347

(0.51)

(0.51)

351

407

408

(0.72)

(0.72)

List 4

130/59

V 130/1

Q 138/1

130/14

6589/1

130/47

2721

(0.50)

(1.20)

(0.50)

(1.33)

(0.41)

(3.82)

(0.51)

(5.94)

(0.80)

(15.39)

(15.39)

(15.39)

(15.39)

(15.39)

(15.39)

(15.39)

(15.39)

(15.39)

(15.39)

(15.39)

(15.39)

(15.39)

(15.39)

(15.39)

(15.39)

(15.39)

(15.39)

(15.39)

(15.39)

(15.39)

(15.39)

(15.39)

(15.39)

(15.39)

(15.39)

(15.39)

(15.39)

(15.39)

(15.39)

(15.39)

(15.39)

(15.39)

(0.50)

(0.50)

(0.44)

(2.07)

(5.00)

(6.18)

(0.51)

(0.51)

(0.51)

(0.51)

(0.51)

(0.51)

(0.51)

(0.51)

(0.51)

(0.51)

(0.51)

(0.51)

(0.51)

(0.51)

(0.51)

(0.51)

(0.51)

(0.51)

(0.51)

(0.51)

(0.51)

(0.51)

(0.51)

(0.51)

(0.51)

(0.51)

(0.51)

(0.51)

(0.51)

(0.51)

(0.51)

(0.51)

(0.51)

(0.51)

(0.51)

(0.51)

2702

V 130/60

6768/1

V 130/84

(23.15)

(23.15)

(23.15)

(23.15)

(23.15)

(23.15)

(23.15)

(23.15)

(23.15)

(23.15)

(23.15)

(23.15)

(23.15)

(23.15)

(23.15)

(23.15)

(23.15)

(23.15)

(23.15)

(23.15)

(23.15)

(23.15)

(23.15)

(23.15)

(23.15)

(23.15)

(23.15)

(23.15)

(23.15)

(23.15)

(23.15)

(23.15)

(23.15)

(23.15)

(23.15)

(23.15)

(23.15)

(23.15)

(23.15)

(23.15)

(23.15)

(23.15)

(23.15)

(23.15)

(23.15)

(23.15)

(23.15)

(23.15)

(23.15)

(23.15)

(23.15)

(23.15)

130/83

V 130/85

V 130/61

V 130/62

V 130/87

130/83

(4.38)

(4.38)

(4.38)

130/89

(4.85)

(4.85)

V 130/90

V 130/91

(0.51)

(0.51)

(0.51)

(0.51)

(0.51)

(0.51)

2723

(10.27)

(10.27)

(10.27)

(10.27)

(10.27)

(0.52)

(0.52)

(0.52)

(0.52)

(0.52)

(0.52)

130/93

(1.14)

(1.14)

468

(6.67)

(6.67)

V 130/94

(3.05)

(3.05)

467

(3.60)

(3.60)

466

(3.60)

(3.60)

471

(0.55)

(0.55)

472

(0.55)

(0.55)

2699





























List 17

231

6502/2

257/1

257/3

257/7

2033

2035

871  
(1.42)

873

874

(11.55)

(11.49)

876

875

(15.09)

(15.10)

878

877

(9.09)

(9.09)

879

(7.44)

(7.46)

880

882

(0.21)

881

81

(0.50)

883

80

(0.22)

(5.91)

(5.57)

884

(5.97)

(5.97)

887

886

(7.22)

(6.72)

(0.72)

83

(0.50)

82

(0.71)

(6.69)

(6.62)

(6.62)

892

891

(2.73)

894

(2.70)

893

(8.57)

(8.81)

895

896

460

6847

7117

6502/5

2298

413/1

6855/1

6502/6

6847

6502/25

6502/42

6502/39

6502/26

List 18

472

409/7

409/8

6855/1

6502/5

2035

257/7

42/1

6502/1

6502/6

6502/2

6502/28

6502/55

2780

257/1

6742/1

6742/1

6502/29

6742/30

6502/55

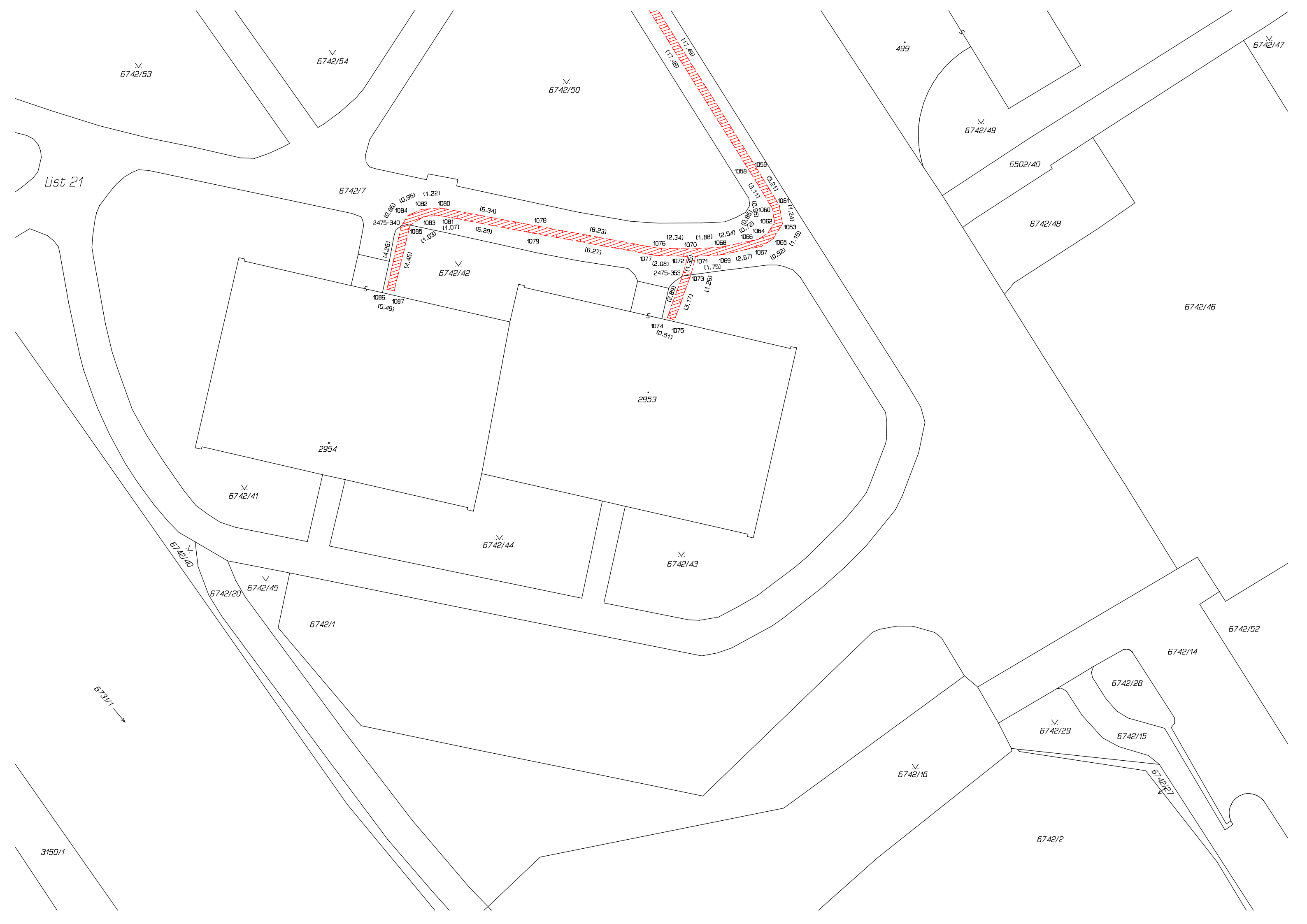
921

(1.10)









List 21

6742/53

6742/54

6742/50

499

6742/47

6742/49

6502/40

6742/7

1084 (0.86) 1082 (0.95) 1080 (1.22) 1078 (6.34) 1076 (2.34) 1070 (1.88) 1068 (2.54) 1066 (1.72) 1064 (1.24) 1063 (1.15) 1062 (0.85) 1061 (0.71) 1060 (0.56) 1059 (3.21) 1058 (3.11) 1057 (1.24) 1056 (1.15) 1055 (0.92) 1054 (2.67) 1053 (2.67) 1052 (1.75) 1051 (1.75) 1050 (2.08) 1049 (2.08) 1048 (3.17) 1047 (3.17) 1046 (1.28) 1045 (1.28) 1044 (0.51) 1043 (0.51) 1042 (0.49) 1041 (0.49) 1040 (4.26) 1039 (4.46) 1038 (1.03) 1037 (1.07) 1036 (6.28) 1035 (6.28) 1034 (6.34) 1033 (6.34) 1032 (6.34) 1031 (6.34) 1030 (6.34) 1029 (6.34) 1028 (6.34) 1027 (6.34) 1026 (6.34) 1025 (6.34) 1024 (6.34) 1023 (6.34) 1022 (6.34) 1021 (6.34) 1020 (6.34) 1019 (6.34) 1018 (6.34) 1017 (6.34) 1016 (6.34) 1015 (6.34) 1014 (6.34) 1013 (6.34) 1012 (6.34) 1011 (6.34) 1010 (6.34) 1009 (6.34) 1008 (6.34) 1007 (6.34) 1006 (6.34) 1005 (6.34) 1004 (6.34) 1003 (6.34) 1002 (6.34) 1001 (6.34) 1000 (6.34)

6742/48

6742/42

6742/46

2954

2953

6742/41

6742/44

6742/43

6742/40

6742/20

6742/45

6742/1

6742/52

6742/14

6742/28

6742/29

6742/15

6742/16

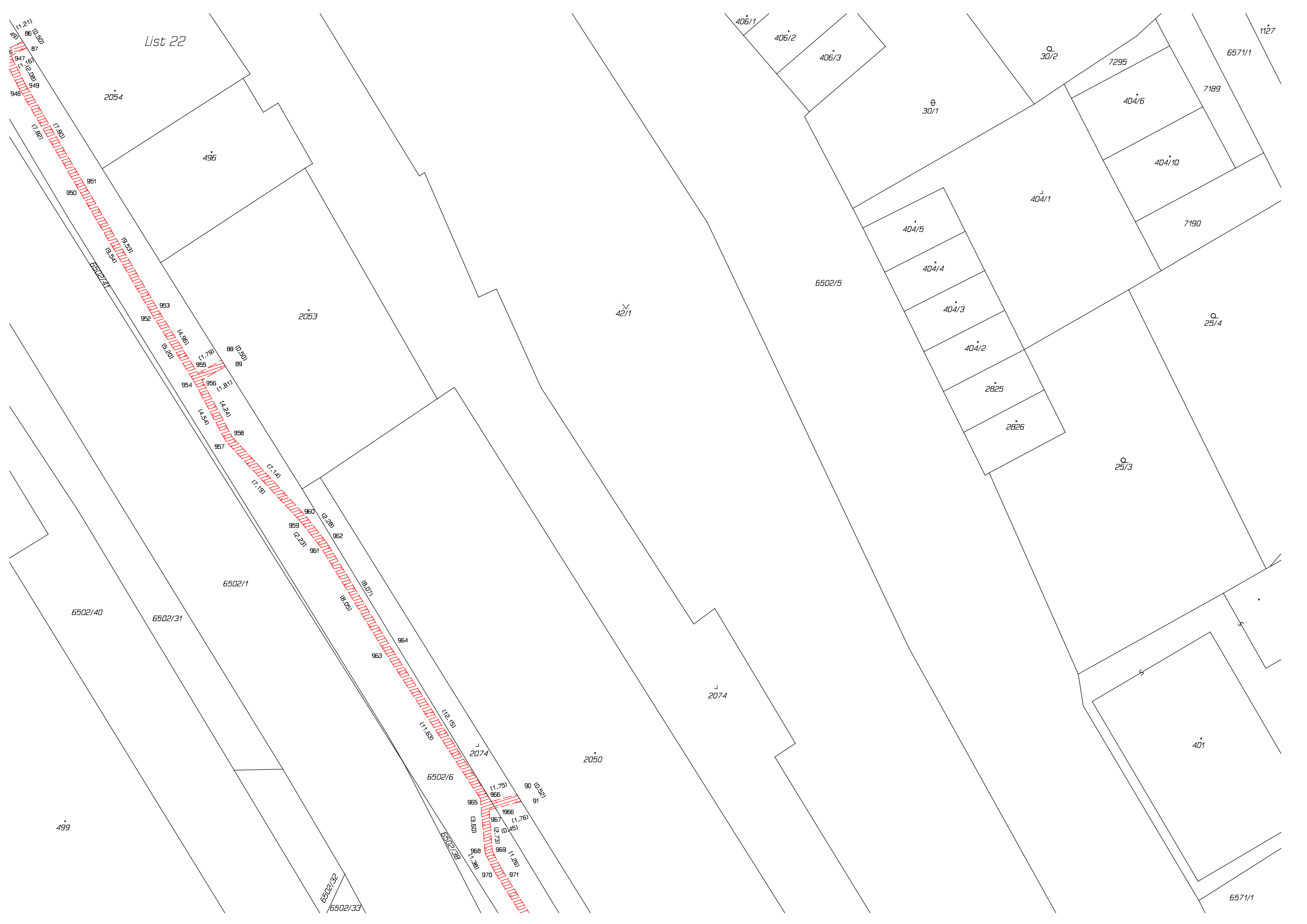
6742/27

6742/2

6731/1

3150/1

List 22



496

2054

2053

499

2074

2050

401

404/5

404/4

404/3

404/2

2825

2826

25/3

25/4

404/1

404/6

404/10

7190

6571/1

1127

6571/1

406/1

406/2

406/3

30/2

30/1

7295

7189

6502/5

6502/1

6502/40

6502/31

6502/32

6502/33

6502/6

6502/32

965

966

967

968

970

90

91

86

87

947

948

950

951

952

953

954

955

956

957

958

959

960

961

962

963

964

965

966

967

968

970

42/1

11.21

12.00

12.09

12.09

17.82

17.80

18.34

18.33

14.96

15.20

11.79

11.81

14.24

14.54

17.14

17.19

12.28

12.23

16.07

16.09

12.15

11.59

1.75

1.76

1.76

1.26

1.26

1.26

1.26

1.26

1.26

1.26

1.26

1.26

1.26

1.26

1.26

1.26

1.26

1.26

1.26

1.26

1.26

1.26

1.26

1.26

1.26

1.26

1.26

88

89

88

89

88

89

88

89

88

89

88

89

88

89

88

89

88

89

88

89

88

89

88

89

88

89

88

89

88

89

88

89

88

89

88

89

88

89

88

89

88

89

88

89

88

89

86

87

947

948

950

951

952

953

954

955

956

957

958

959

960

961

962

963

964

965

966

967

968

970

971

90

91

88

89

88

89

88

89

88

89

88

89

88

89

88

89

88

89

88

89

88

89

88

89

88

86

87

947

948

950

951

952

953

954

955

956

957

958

959

960

961

962

963

964

965

966

967

968

970

971

90

91

88

89

88

89

88

89

88

89

88

89

88

89

88

89

88

89

88

89

88

89

88

89

88

86

87

947

948

950

951

952

953

954

955

956

957

958

959

960

961

962

963

964

965

966

967

968

970

971

90

91

88

89

88

89

88

89

88

89

88

89

88

89

88

89

88

89

88

89

88

89

88

89

88

86

87

947

948

950

951

952

953

954

955

956

957

958

959

960

961

962

963

964

965

966

967

968

970

971

90

91

88

89

88

89

88

89

88

89

88

89

88

89

88



List 23





6742/52

List 24

6502/33

6502/34

6502/37

(14.10)

987

988

989

6502/36

(10.30)

990

991

6502/6

6502/1

2074

6502/5

1778/1

394/6

394/7

394/3

394/4

6856

6742/52

6742/14

6742/15

6502/35

6502/35

6502/7

6502/51

†  
519

⊕

⊕

⊕ 22/2

396

899

2305



List 26



1142  
1143  
1140  
1141  
1138  
1137  
1136  
1135  
1134  
1133  
1132  
1129  
1128  
1127  
1126  
1125  
1124  
1123  
1122  
1121  
1120  
1119  
1118  
1117  
1116  
1115  
1114  
1113  
1112  
1111  
1110  
1109  
1108  
1107  
1106  
1105  
1104  
1103  
1102  
1101  
1100  
1099  
1098  
1097  
1096  
1095  
1094  
1093  
1092  
1091  
1090  
1089  
1088  
1087  
1086  
1085  
1084  
1083  
1082  
1081  
1080  
1079  
1078  
1077  
1076  
1075  
1074  
1073  
1072  
1071  
1070  
1069  
1068  
1067  
1066  
1065  
1064  
1063  
1062  
1061  
1060  
1059  
1058  
1057  
1056  
1055  
1054  
1053  
1052  
1051  
1050  
1049  
1048  
1047  
1046  
1045  
1044  
1043  
1042  
1041  
1040  
1039  
1038  
1037  
1036  
1035  
1034  
1033  
1032  
1031  
1030  
1029  
1028  
1027  
1026  
1025  
1024  
1023  
1022  
1021  
1020  
1019  
1018  
1017  
1016  
1015  
1014  
1013  
1012  
1011  
1010  
1009  
1008  
1007  
1006  
1005  
1004  
1003  
1002  
1001  
1000  
999  
998  
997  
996  
995  
994  
993  
992  
991  
990  
989  
988  
987  
986  
985  
984  
983  
982  
981  
980  
979  
978  
977  
976  
975  
974  
973  
972  
971  
970  
969  
968  
967  
966  
965  
964  
963  
962  
961  
960  
959  
958  
957  
956  
955  
954  
953  
952  
951  
950  
949  
948  
947  
946  
945  
944  
943  
942  
941  
940  
939  
938  
937  
936  
935  
934  
933  
932  
931  
930  
929  
928  
927  
926  
925  
924  
923  
922  
921  
920  
919  
918  
917  
916  
915  
914  
913  
912  
911  
910  
909  
908  
907  
906  
905  
904  
903  
902  
901  
900  
899  
898  
897  
896  
895  
894  
893  
892  
891  
890  
889  
888  
887  
886  
885  
884  
883  
882  
881  
880  
879  
878  
877  
876  
875  
874  
873  
872  
871  
870  
869  
868  
867  
866  
865  
864  
863  
862  
861  
860  
859  
858  
857  
856  
855  
854  
853  
852  
851  
850  
849  
848  
847  
846  
845  
844  
843  
842  
841  
840  
839  
838  
837  
836  
835  
834  
833  
832  
831  
830  
829  
828  
827  
826  
825  
824  
823  
822  
821  
820  
819  
818  
817  
816  
815  
814  
813  
812  
811  
810  
809  
808  
807  
806  
805  
804  
803  
802  
801  
800  
799  
798  
797  
796  
795  
794  
793  
792  
791  
790  
789  
788  
787  
786  
785  
784  
783  
782  
781  
780  
779  
778  
777  
776  
775  
774  
773  
772  
771  
770  
769  
768  
767  
766  
765  
764  
763  
762  
761  
760  
759  
758  
757  
756  
755  
754  
753  
752  
751  
750  
749  
748  
747  
746  
745  
744  
743  
742  
741  
740  
739  
738  
737  
736  
735  
734  
733  
732  
731  
730  
729  
728  
727  
726  
725  
724  
723  
722  
721  
720  
719  
718  
717  
716  
715  
714  
713  
712  
711  
710  
709  
708  
707  
706  
705  
704  
703  
702  
701  
700  
699  
698  
697  
696  
695  
694  
693  
692  
691  
690  
689  
688  
687  
686  
685  
684  
683  
682  
681  
680  
679  
678  
677  
676  
675  
674  
673  
672  
671  
670  
669  
668  
667  
666  
665  
664  
663  
662  
661  
660  
659  
658  
657  
656  
655  
654  
653  
652  
651  
650  
649  
648  
647  
646  
645  
644  
643  
642  
641  
640  
639  
638  
637  
636  
635  
634  
633  
632  
631  
630  
629  
628  
627  
626  
625  
624  
623  
622  
621  
620  
619  
618  
617  
616  
615  
614  
613  
612  
611  
610  
609  
608  
607  
606  
605  
604  
603  
602  
601  
600  
599  
598  
597  
596  
595  
594  
593  
592  
591  
590  
589  
588  
587  
586  
585  
584  
583  
582  
581  
580  
579  
578  
577  
576  
575  
574  
573  
572  
571  
570  
569  
568  
567  
566  
565  
564  
563  
562  
561  
560  
559  
558  
557  
556  
555  
554  
553  
552  
551  
550  
549  
548  
547  
546  
545  
544  
543  
542  
541  
540  
539  
538  
537  
536  
535  
534  
533  
532  
531  
530  
529  
528  
527  
526  
525  
524  
523  
522  
521  
520  
519  
518  
517  
516  
515  
514  
513  
512  
511  
510  
509  
508  
507  
506  
505  
504  
503  
502  
501  
500  
499  
498  
497  
496  
495  
494  
493  
492  
491  
490  
489  
488  
487  
486  
485  
484  
483  
482  
481  
480  
479  
478  
477  
476  
475  
474  
473  
472  
471  
470  
469  
468  
467  
466  
465  
464  
463  
462  
461  
460  
459  
458  
457  
456  
455  
454  
453  
452  
451  
450  
449  
448  
447  
446  
445  
444  
443  
442  
441  
440  
439  
438  
437  
436  
435  
434  
433  
432  
431  
430  
429  
428  
427  
426  
425  
424  
423  
422  
421  
420  
419  
418  
417  
416  
415  
414  
413  
412  
411  
410  
409  
408  
407  
406  
405  
404  
403  
402  
401  
400  
399  
398  
397  
396  
395  
394  
393  
392  
391  
390  
389  
388  
387  
386  
385  
384  
383  
382  
381  
380  
379  
378  
377  
376  
375  
374  
373  
372  
371  
370  
369  
368  
367  
366  
365  
364  
363  
362  
361  
360  
359  
358  
357  
356  
355  
354  
353  
352  
351  
350  
349  
348  
347  
346  
345  
344  
343  
342  
341  
340  
339  
338  
337  
336  
335  
334  
333  
332  
331  
330  
329  
328  
327  
326  
325  
324  
323  
322  
321  
320  
319  
318  
317  
316  
315  
314  
313  
312  
311  
310  
309  
308  
307  
306  
305  
304  
303  
302  
301  
300  
299  
298  
297  
296  
295  
294  
293  
292  
291  
290  
289  
288  
287  
286  
285  
284  
283  
282  
281  
280  
279  
278  
277  
276  
275  
274  
273  
272  
271  
270  
269  
268  
267  
266  
265  
264  
263  
262  
261  
260  
259  
258  
257  
256  
255  
254  
253  
252  
251  
250  
249  
248  
247  
246  
245  
244  
243  
242  
241  
240  
239  
238  
237  
236  
235  
234  
233  
232  
231  
230  
229  
228  
227  
226  
225  
224  
223  
222  
221  
220  
219  
218  
217  
216  
215  
214  
213  
212  
211  
210  
209  
208  
207  
206  
205  
204  
203  
202  
201  
200  
199  
198  
197  
196  
195  
194  
193  
192  
191  
190  
189  
188  
187  
186  
185  
184  
183  
182  
181  
180  
179  
178  
177  
176  
175  
174  
173  
172  
171  
170  
169  
168  
167  
166  
165  
164  
163  
162  
161  
160  
159  
158  
157  
156  
155  
154  
153  
152  
151  
150  
149  
148  
147  
146  
145  
144  
143  
142  
141  
140  
139  
138  
137  
136  
135  
134  
133  
132  
131  
130  
129  
128  
127  
126  
125  
124  
123  
122  
121  
120  
119  
118  
117  
116  
115  
114  
113  
112  
111  
110  
109  
108  
107  
106  
105  
104  
103  
102  
101  
100  
99  
98  
97  
96  
95  
94  
93  
92  
91  
90  
89  
88  
87  
86  
85  
84  
83  
82  
81  
80  
79  
78  
77  
76  
75  
74  
73  
72  
71  
70  
69  
68  
67  
66  
65  
64  
63  
62  
61  
60  
59  
58  
57  
56  
55  
54  
53  
52  
51  
50  
49  
48  
47  
46  
45  
44  
43  
42  
41  
40  
39  
38  
37  
36  
35  
34  
33  
32  
31  
30  
29  
28  
27  
26  
25  
24  
23  
22  
21  
20  
19  
18  
17  
16  
15  
14  
13  
12  
11  
10  
9  
8  
7  
6  
5  
4  
3  
2  
1

3133/2

2972

3096/1

2789

3135/3

3137/1

1115

1663

3136

1121/1

6731/1 →

(17.96)

1142

1143

(16.93)

(16.93)

1140

1141

(5.78)

(5.01)



List 28

3136

1170 (2.47)

1172

1174

1121/1

3140/3

1121/2

1121/3

1176 (2.08) 1173

1178 (8.67)

1177 (1.26) 1175

1179 (0.89)

1180 (0.39)

1181 (0.67)

1182

1181

1184 (12.42)

1185 (12.57)

3143/2

1070

1183 (1.71) 1184 (1.11)

1186 (1.52) 1188 (1.95)

1187 (1.43) 1189 (1.22)

1185 (1.31) 1187 (1.43)

1193 (1.98)

1192 (1.99)

1190 (1.43) 1191 (1.22)

1195 (0.50) 1194

3137/1

2974

3138/2

1196 (6.24) 1197

1198 (6.29)

1199

1200 (15.29)

1201 (15.54)

1202 (4.31)

1203 (4.55)

1204 (16.71)

1205 (16.48)

114 (0.50) 115

1201 (3.56) 1202 (3.56)

2976

6611/2

961

3141/2

1580

6862

B731/1



List 29



1203  
1204  
(16.71)  
(16.46)

545-1737  
(1.42)  
(1.35)  
545-1738  
(0.55)  
116

1205  
1206  
1207  
(12.56)  
(12.30)

2976

1208  
1209

3143/2

6731/1 →

1580

1160

7217

3137/1

2978

3143/4

2406

1704

117  
118  
(0.50)

1210  
1211  
1212  
(3.09)  
(3.10)

1213  
1214  
(4.90)

1215  
1216  
(18.57)  
(18.52)

1217  
1218  
(11.97)  
(11.98)

1219  
1220  
(1.98)  
(2.35)

1221  
1222  
(11.93)  
(11.93)

1223  
1224  
(3.43)  
(3.57)

1225  
1226  
(13.85)  
(13.84)

6611/5

1182

1264

1939/1

6611/2

257/1

→ 6742/39

6742/17

6742/31

List 30

1264

3146/3

3146/1

6863

6861/1

1223  
(13.85)  
(13.84)

1225  
(5.25)  
1226  
(5.05)  
1227  
(5.25)  
1228  
(10.89)  
1229  
(10.89)

1939/1

1939/2

1939/3

(14.40)  
(14.68)

3148/3

3137/1

1230  
1231  
(10.54)  
(10.88)

(0.69)  
1232  
(2.39)  
1233  
(0.50)  
1234  
(0.69)  
1235  
(2.61)  
1236  
(0.69)

1959

1720

(7.92)  
(7.94)

3148/4

6850

1239  
1240

(16.28)  
(16.08)

3359

1241  
1242

2661

(7.50)

3137/1

6742/7

6742/38

6742/39

6731/1



List 31



2875

3148/6

1957/1

1957/2

6786/3

V.  
6786/2

6861/1

6786/1

6778/1

3151

949

3137/1

3148/4

1241  
1242

2661

10.50  
10.31

123  
124

10.79

1247

1245

1244

1243

1246

1249

1248

1247

1246

1249

1248

1247

1246

1249

1248

1247

1246

1249

1248

1247

1246

1249

1248

1247

1246

1249

1248

1247

1246

1249

1248

1247

1246

1249

1248

1247

1246

1249

1248

1247

1246

1249

1248

1247

1246

1249

1248

1247

1246

1249

1248

1247

1246

1249

1248

1247

1246

1249

1248

1247

1246

1249

1248

1247

1246

1249

1248

1247

1246

1249

1248

1247

1246

1249

1248

1247

1246

1249

1248

1247

1246

1249

1248

1247

1246

1249

1248

1247

1246

1249

1248

1247

1246

1249

1248

1247

1246

1249

1248

1247

1246

1249

1248

1247

1246

1249

1248

1247

1246

1249

1248

1247

1246

1249

1248

1247

1246

1249

1248

1247

1246

1249

1248

1247

1246

1249

1248

1247

1246

1249

1248

1247

1246

1249

1248

1247

1246

1249

1248

1247

1246

1249

1248

1247

1246

1249

1248

1247

1246

1249

1248

1247

1246

1249

1248

1247

1246

1249

1248

1247

1246

1249

1248

1247

1246

1249

1248

1247

1246

1249

1248

1247

1246

1249

1248

1247

1246

1249

1248

1247

1246

1249

1248

1247

1246

1249

1248

1247

1246

1249

1248

1247

1246

1249

1248

1247

1246

1249

1248

1247

1246

1249

1248

1247

1246

1249

1248

1247

1246

1249

1248

1247

1246

1249

1248

1247

1246

1249

1248

1247

1246

1249

1248

1247

1246

1249

1248

1247

1246

1249

1248

1247

1246

1249

1248

1247

1246

1249

1248

1247

1246

1249

1248

1247

1246

1249

1248

1247

1246

1249

1248

1247

1246

1249

1248

1247

1246

1249

1248

1247

1246

1249

1248

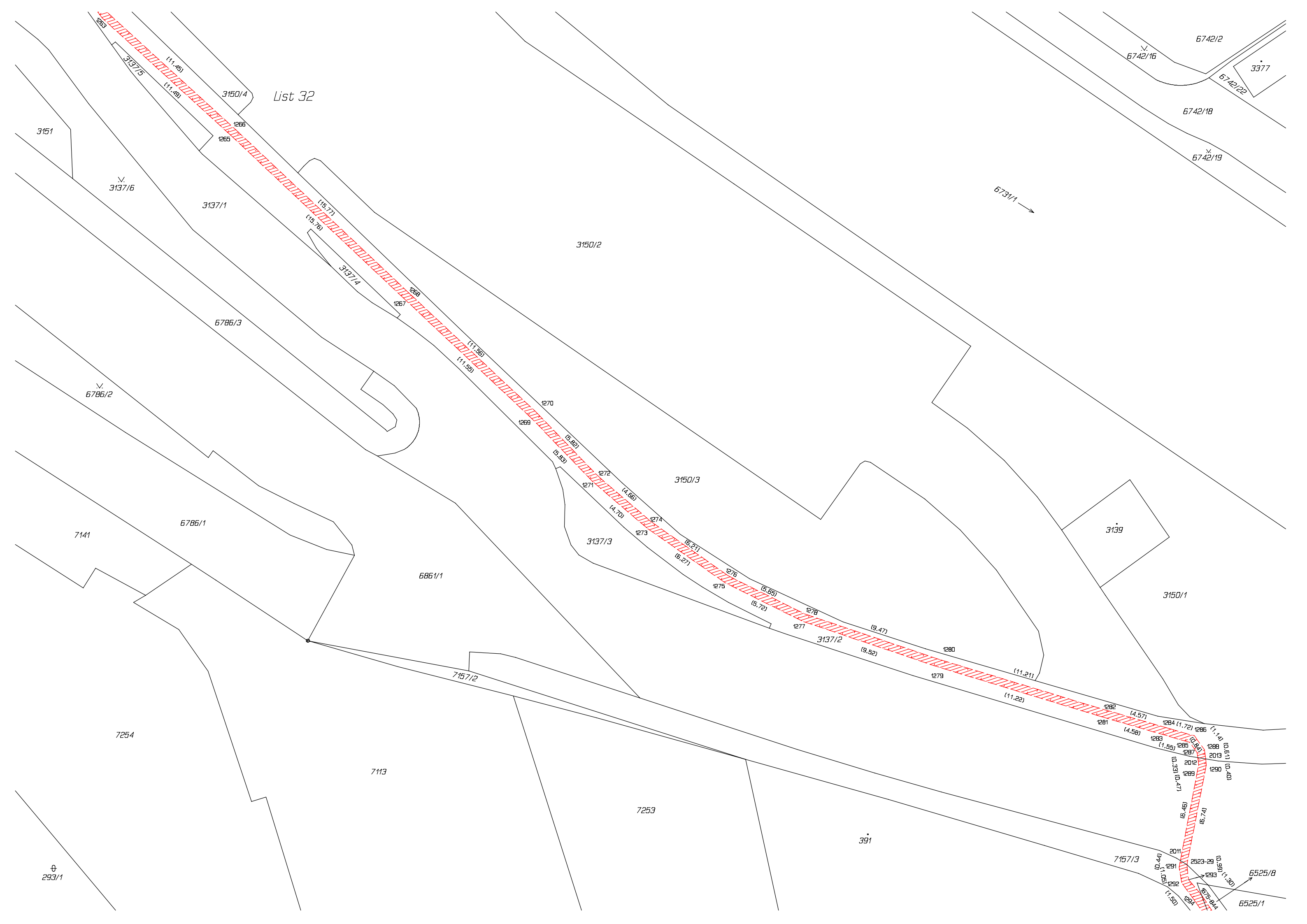
1247

1246

1249

1248

1247



List 32

3150/4

(11.45)

(11.49)

3137/5

3137/1

(15.72)

(15.76)

3137/4

1268

1267

(11.36)

(11.35)

3150/2

1270

1269

(5.82)

(5.83)

1272

1271

(4.66)

(4.70)

1274

1273

(6.21)

(6.27)

1275

(5.65)

(5.72)

1278

(9.47)

1277

(9.52)

3137/2

1280

(11.21)

(11.22)

1282

(4.57)

1284

(1.72)

1286

(1.14)

1288

(0.51)

1285

(0.84)

1287

(0.51)

1289

(0.40)

2012

(0.33)

1289

(1.47)

16.46

16.74

2011

(0.44)

1291

(1.50)

2523-29

(0.15)

1293

(1.30)

675-844

1294

(1.50)

6525/8

6525/1

6742/18

6742/19

6742/2

6742/22

3377

6731/1

3137/6

6786/2

7141

6786/1

7254

7113

7253

391

7157/3

293/1



List 34

