

Fourth Amendment to the Intraday Operations Agreement (IDOA) – Annex 10  
: Adapted Exhibit 17 to the IDOA - SIDC\_JOINT\_NOR\_25: Nomination

Confidential

**Annex 10 to the Fourth Amendment to the Intraday Operations  
Agreement (IDOA):**

**Adapted Exhibit 17 to the IDOA - SIDC JOINT NOR 25: Nomination**

## SIDC\_JOINT\_NOR\_25: Nomination

<b>Version</b>	2.0	
<b>Date</b>	23/07/2023	
<b>Status</b>	<input checked="" type="checkbox"/> Draft	<input type="checkbox"/> Final

### Approval

Version	Date	Name	Function	Signature

### Previous versions

Version	Date	Author	Summary of changes
0.1	10/03/2015	Elia	Initial draft
0.2	21/06/2016	Joint	Review and Clean-Up
0.3	31/10/2016	Joint	Review and Clean-Up
1.0	13/10/2017	O TF	Legal comments taken into account
1.1	29/03/2019	O TF Chair	Minor corrections to table 1
1.2	23/04/2019	O TF Chair	Inclusion of 2 <sup>nd</sup> wave in table 1
1.3	14/11/2019	O TF Chair	Added option to trigger incident management
	25/09/2020	O TF Chair	Inclusion of DE-BE and NO2-DE in table 1
1.4	27/02/2022	O TF Chair	Removal of references to hourly sequences
1.5	04/07/2022	MAVIR	New HU-SI interconnector
1.6	09/09/2022	O TF Chair	Inclusion of Italian Northern borders in table 1 (3 <sup>rd</sup> wave)
1.7	07/11/2022	O TF Chair	Inclusion of 4 <sup>th</sup> wave borders
2.0	23/07/2023	O TF Chair	Renaming from XBID_JOINT_NOR_03 to SIDC_JOINT_NOR_25; Replacement of figure chapter 1; Updated references to other procedures;

## Remarks

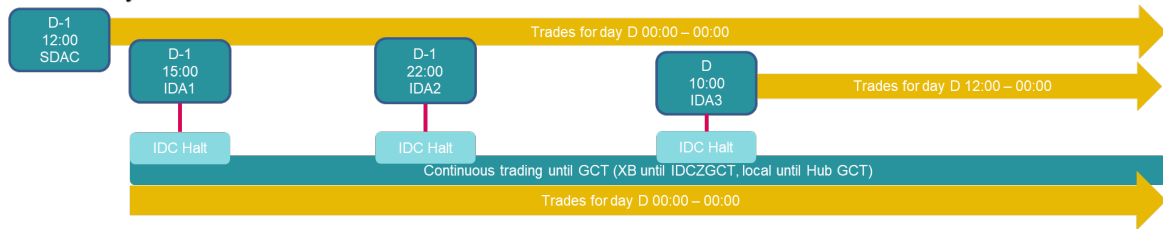
As a general principle, as soon as an event occurs that prevents the normal performance of a process the operators refer to **local BUP**.

## Table of Contents

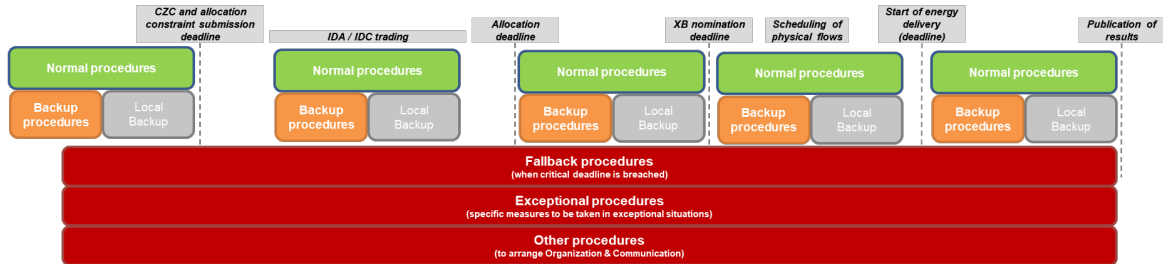
1. Introduction .....	5
1.1. Summary .....	8
1.2. Governed/ Regulated by .....	8
1.3. Tools and Communication protocols .....	8
1.4. Associated procedures .....	9
2. Procedure .....	10
2.1. Preconditions to start.....	10
2.2. General overview .....	10
2.3. Process Clarification .....	12
3. Final State .....	14

# 1. Introduction

## MCSC daily timeline



## Procedural structure



This procedure describes the process of nominating by the Scheduling Agent of the Shipping Agent or the CCP.

Each Shipping Agent, CCP can be or appoint a Scheduling Agent in order to provide schedules towards the TSO Post-Coupling Systems. Only those nominations for which a nomination on behalf is not in place are concerned. For those where nomination on behalf is in place, no nomination by the Shipping Systems is allowed.

Note:

- Explicit Participants and any issue related to them, are under TSO responsibility.
- For the Nordic areas and borders of SvK, Fingrid and Statnett nomination cross-border and for local hub is not applicable. The "nomination data" is reported to the TSOs settlement system as defined in a local procedure.
- Note: For MIBEL areas and borders of REE and REN nomination cross-border and for local hub is not applicable. The "nomination data" is received by the TSOs settlement system from the CMM (NSF file).

*Table 1 – Timing and “nomination on behalf” solutions in place for each interconnector*

Interconnector(s)	Deadlines of nomination		Does nomination on behalf apply?
	Cross-border	Local Hub	
AT-SI	AT: Start of delivery -45 min SI: Start of delivery -30 min	AT: local procedure SI: local procedure	AT: No SI: Yes
BE-NL	NL: N/A BE: N/A	NL: D+1 10:00 BE: D+1 14:00	NL: yes (only cross-border nomination) BE: yes (only cross-border nomination)
BE-FR	FR: N/A BE: N/A	FR: D+1 8:00 BE: D+1 14:00	FR: yes BE: yes (only cross-border nomination)
DE-NL (AMP-TTN/TTG-TTN)	NL: N/A DE: Start of delivery -00:45 min	NL: D+1 10:00 DE: D+1 16:00	NL: yes (only cross-border nomination) DE: yes

DE-FR (AMP-RTE/TNG-RTE)	DE : Start of delivery -00:45 min FR: N/A	DE: next working day 16:00 (currently under discussion D+1 10:00) FR: D+1 8:00	DE: yes FR : yes
50HZT-AMP	Start of delivery – 00:15 min	D+1 16:00	Yes
50HZT-TNG	Start of delivery – 00:15 min	D+1 16:00	Yes
50HZT-TTG	Start of delivery – 00:15 min	D+1 16:00	Yes
AMP-TNG	Start of delivery – 00:15 min	D+1 16:00	Yes
AMP-TTG	Start of delivery – 00:15 min	D+1 16:00	Yes
TNG-TTG	Start of delivery – 00:15 min	D+1 16:00	Yes
AMP-AT	Start of delivery -00:45min,	AT: local procedure DE: D+1 16:00	AT: No DE: yes
DE-DK1	DK1: N/A DE: Start of delivery -00:45 min	DK1: Start of delivery -00:45 min DE: D+1 16:00	DK1: yes DE: yes
DE-DK2	DK2: N/A DE: N/A	DK2: Start of delivery - 00:45min DE: D+1 16:00	DK2: yes DE: yes
DK1-NL	NL: N/A DK: N/A	NL: D+1 10:00 DK: Start of delivery -00:45 min	NL: yes (only cross-border nomination) DK: yes
ES-PT	Start of delivery - 00:55 min (NSF reception time)	Start of delivery - 00:50 min	N/A. XB nomination taken by TSO from NSF file
FR-ES	ES: Start of delivery - 00:55 min (NSF reception time) FR: N/A	ES: Start of delivery - 00:50 min FR: D+1 8:00	ES: N/A. XB nomination taken by TSO from NSF file  FR : yes
NO1-NO2	local procedure	local procedure	N/A
NO1-NO3	local procedure	local procedure	N/A
NO1-NO5	local procedure	local procedure	N/A
NO1-SE3	local procedure	local procedure	N/A
NO2-DK1	NO2:local procedure DK1: N/A	local procedure DK1: Start of delivery -00:45 min	DK1: yes NO2: N/A
NO2-NL	NL: N/A NO: local procedure	NL: D+1 10:00 NO: local procedure	NL: yes (only cross-border nomination) NO: N/A
NO2-NO5	local procedure	local procedure	N/A
NO3-NO4	local procedure	local procedure	N/A
NO3-NO5	local procedure	local procedure	N/A
NO3-SE2	local procedure	local procedure	N/A
NO4-SE1	local procedure	local procedure	N/A
NO4-SE2	local procedure	local procedure	N/A

SE1-FI	local procedure	local procedure	N/A
SE1-SE2	local procedure	local procedure	N/A
SE2-SE3	local procedure	local procedure	N/A
SE3-FI	local procedure	local procedure	N/A
SE3-SE4	local procedure	local procedure	N/A
SE3-DK1	SE: local procedure N/A* GCT+00:15 min DK1: N/A	SE: local procedure N/A* GCT+00:15 min DK1: Start of delivery -00:45 min	SE: N/A DK1: yes
SE4 – DK2	SE: local procedure DK2: N/A	SE: local procedure DK2: Start of delivery -00:45 min	SE: N/A DK2: yes
DK1-DK2	N/A	Start of delivery -00:45min	yes
FI-EE	FI: local procedure EE: Start of delivery – 00:15min	FI: local procedure EE: Start of delivery – 00:15min	No
EE-LV	EE: Start of delivery –00:15 min LV: Start of delivery – 00:45m	EE: Start of delivery – 00:15 min LV: Start of delivery – 00:45 min	No
LV-LT	Start of delivery – 00:45min	Start of delivery – 00:45 min	No
LT-SE4	LT: Start of delivery – 00:45min SE: local procedure	LT: Start of delivery – 00:45 min SE: local procedure	No
FI-FRE	local procedure	local procedure	N/A
CZ – DE (50Hertz/Tennet)	Start of delivery – 00:45 min	CZ: D+1 8:00 DE: D+1 16:00	CZ: No DE: Yes
	Start of delivery – 00:45 min	CZ: D+1 8:00 DE: D+1 16:00	CZ: No DE: Yes
CZ – AT	Start of delivery – 00:45 min	CZ: D+1 8:00 AT: local procedure	No
AT – HU	Start of delivery – 00:45 min	HU: Start of delivery – 0 min AT: local procedure	No
HU – RO	Start of delivery – 00:45 min	HU: Start of delivery – 0 min Start of delivery –00:45 min	No
HU - HR	HR: N/A HU: Start of delivery – 00:45 min	HR: local procedure HU: HU: Start of delivery – 0 min	HR: Yes HU: No
HR – SI	Start of delivery -00:30 min	local procedure	Yes
HU - SI	HU: Start of delivery – 00:45 min SI: start of delivery – 00:30 min	HU: Start of delivery – 0 min SI: local procedure	HU: No SI: Yes
RO-BG	Start of delivery - 00:45 min	BG: local procedure RO: Start of delivery -00:45 min	BG: No RO: No
PL-SE4	local procedure	local procedure	PL: yes SE: no
LT-PL	local procedure	local procedure	PL: yes LT: no

50HZZ-PL	N/A	DE: D+1 16:00 PL: local procedure	Yes
CZ-PL	local procedure	local procedure	PL: yes
DE-BE	DE: Start of delivery -00:45 min BE: N/A	DE: D+1 16:00 BE: D+1 14:00	DE: yes BE: yes (only cross-border nomination)
DE-NO2	DE: Start of delivery -00:45 min NO: local procedure	DE: D+1 16:00 NO: local procedure	DE: yes NO: N/A
MA_IT-CP - AT	IT: local procedure AT: Start of delivery - 45 min	IT: local procedure AT: local procedure	IT: yes AT: No
MA_IT-CP - FR	IT: local procedure FR: N/A	IT: local procedure FR: D+1 8:00	IT: yes FR: yes
MA_IT-CP - SI	IT: local procedure SI: Start of delivery - 30 min	IT: local procedure SI: local procedure	IT: yes SI: yes
Italian internal ICs	IT: local procedure	IT: local procedure	IT: yes
MA_IT-GR	GR: local procedure	GR: local procedure	GR: TSO receives XBN files from SM according to local procedure
BG-GR	GR: local procedure	GR: local procedure	GR: TSO receives XBN files from SM according to local procedure
SK-HU	SK: Start of delivery - 00:45 min HU: Start of delivery-00:45	SK: local procedure HU: Start of delivery - 0 min	No
SK-CZ	SK: Start of delivery - 00:45 min	CZ: D+1 8:00 SK: local procedure	No
SK-PL	SK: Start of delivery - 00:45 min PL: local procedure	local procedure	SK: No PL: Yes

Depending on the local arrangements, some nominations are mandatory ex-ante, and other can be provided ex-post.

### 1.1. Summary

This procedure describes the process of nominating by the Scheduling Agent of the Shipping Agent Systems or the Scheduling Agent of the CCP systems towards the TSO Post-Coupling Systems. This procedure is applicable to all nominating parties but TSOs and NEMOs are only mentioned where relevant.

### 1.2. Governed/ Regulated by

- Local BRP Contract
- Bilateral agreements
- Intraday Operations Agreement (IDOA)
- High Level Architecture (HLA)
- High Level Business Process (HLBP)

### 1.3. Tools and Communication protocols

#### Tools



Local communication protocols to be applied.

#### **1.4. Associated procedures**

Preceding procedures:

- SIDC\_JOINT\_NOR\_18: Distribution of allocation information

Subsequent procedures:

- Local procedure on Scheduled Exchange Verification

Other associated procedures and rules:

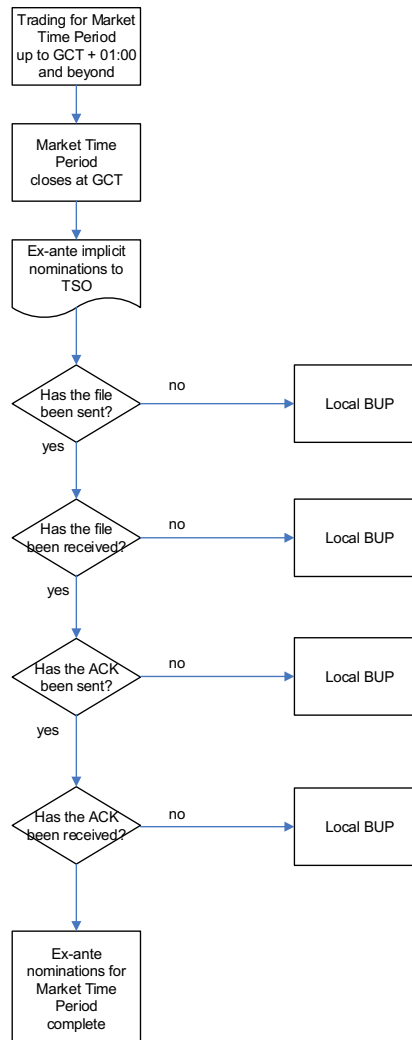
- SIDC\_JOINT\_NOR\_26: Nomination on behalf
- SIDC\_JOINT\_OTH\_02: Internal and External Communications
- SIDC\_JOINT\_FAL\_01: Incident Management
- SIDC\_JOINT\_EXC\_01: Closing and re-opening of an interconnector

## 2. Procedure

### 2.1. Preconditions to start

Shipping systems / CCP/ NEMO Clearing system are up and running.

### 2.2. General overview





The figure above provides a general overview over the relevant timelines for nominations. Please note that time indications are examples and not requirements for particular interconnectors.

*Table 2 – The Nomination process<sup>1</sup>*

#	Process	Timings	From <sup>ii</sup>	To <sup>ii</sup>	Tool <sup>ii</sup>	Backup	Fallback
1	Sending of nominations	Received before <i>Nomination Deadline</i>	Scheduling Agent of the Shipping Agent or CCP	TSO Post-Coupling System	Regular communication channel	Local procedure	-
2	Acknowledgement for correct reception of the nominations	Depending on local agreements	TSO Post-Coupling System	Scheduling Agent of the Shipping Agent or CCP	Regular communication channel	Local procedure	-

<sup>1</sup> Table is not sequential as some steps could be implemented ex post.

Greyed out rows indicate steps that are not covered by the Joint XBID Procedures (and might concern optional steps, meaning that these are up to the local parties involved) <sup>ii</sup>.

#	Process	Timings	From <sup>ii</sup>	To <sup>ii</sup>	Tool <sup>ii</sup>	Backup	Fallback
3	Scheduled exchanges verification processes	Before start of Period Time Unit of delivery (deadline to be defined locally)	TSO Post-Coupling System	TSO Post-Coupling System	Regular communication channel	Local procedure	-
4	Send nominated positions (optional)	After step 2 and/or 3	TSO Post-Coupling System	Scheduling Agent of the Shipping Agent or CCP	Regular communication channel	Local procedure	-
5	Acknowledgement for correct reception of nominated positions (optional)	Timing depends on local procedures after step 4	Scheduling Agent of the Shipping Agent or CCP	TSO Post-Coupling System	Regular communication channel	Local procedure	-

## 2.3. Process Clarification

### 1. Sending of nominations

The files containing the nominations are sent from the scheduling systems of the S [REDACTED]

[REDACTED]

[REDACTED]

[REDACTED]

[REDACTED]

All nominations must be sent to the TSOs' post-coupling systems before the *Nomination Deadline*. Updates of the nominations can also be sent up to this deadline. In case multiple files are being sent of the same type, the file with the highest version number that is received before the nomination deadline and that is positively acknowledged by TSOs (if any) is taken into account.

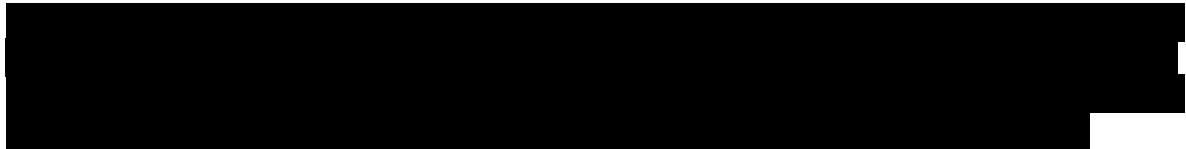
#	Risk cases	Measures taken
1	Nomination cannot be sent to the TSOs' Post-coupling systems in an automated way through the default communication channels	Local backup procedure or SIDC_JOINT_FAL_01

### 2. Acknowledgement for the correct reception of the nominations

All received information files must be acknowledged (positively or negatively) by the TSO on the receiving end. This acknowledgement should be sent before a predefined deadline in line with local procedures after reception of the concerned file.

#	Risk cases	Measures taken
2	No acknowledgement is received by the Scheduling Agent of the Shipping Agent/ CCP	Local backup procedure or SIDC_JOINT_FAL_01
3	A negative acknowledgement is received by the Scheduling Agent of the Shipping Agent/ CCP	Local backup procedure or SIDC_JOINT_FAL_01

### 3. Scheduled exchange verification process



#	Risk cases	Measures taken
4	Cross-border nominations at TSOs differ for a specific border.	Local procedure

As far as required by local rules, each TSO also aligns the received HUB nominations of the Scheduling Agent of the CCPs and Scheduling Agent of Shipping Agents and scheduling agents of local market participants. Local rules apply to resolve differences between the nominations of counter parties.

### 4. Send nominated positions

As far as required by local rules, each TSO sends the (aligned) nominated positions to the Scheduling Agent of the Shipping Agent (confirmation of cross-border nominations and/ or HUB nominations) or Scheduling Agent of the CCPs (confirmation of HUB nominations) active in the scheduling area operated by the TSO.

#	Risk cases	Measures taken
5	Nominated position cannot be sent to the Scheduling Agent of the Shipping Agent's/ CCPs' systems in an automated way through the default communication channels	Local backup procedure

### 5. Acknowledgement for correct reception of nominated positions

As far as required by local rules, all received information files must be acknowledged (positively or negatively) by the Scheduling Agent of the Shipping Agent/ CCPs. This acknowledgement should be sent up to a deadline in line with local procedures after reception of the concerned file.

#	Risk cases	Measures taken
6	No acknowledgement is received by TSO	Local backup procedure

---

7	A negative acknowledgement is received by TSO	Local backup procedure
---	---	------------------------

### 3. Final State

The procedure ends when the nominations are successfully received by the TSOs' Post-Coupling Systems and the confirmation provided by the TSOs, as locally arranged, is received by the Scheduling Agent of the Shipping Agent/ CCPs.

---

<sup>i</sup> Business secret

<sup>ii</sup> Internal operational timing/no public information

<sup>iii</sup> Commercially sensitive information

<sup>iv</sup> Confidential by nature/security of supply