

V.  
840/2

Q.  
854

Q.  
856

Q.  
858

876/2

853

855

V.  
841

V.  
840/3

857

859

1142/5

99/2

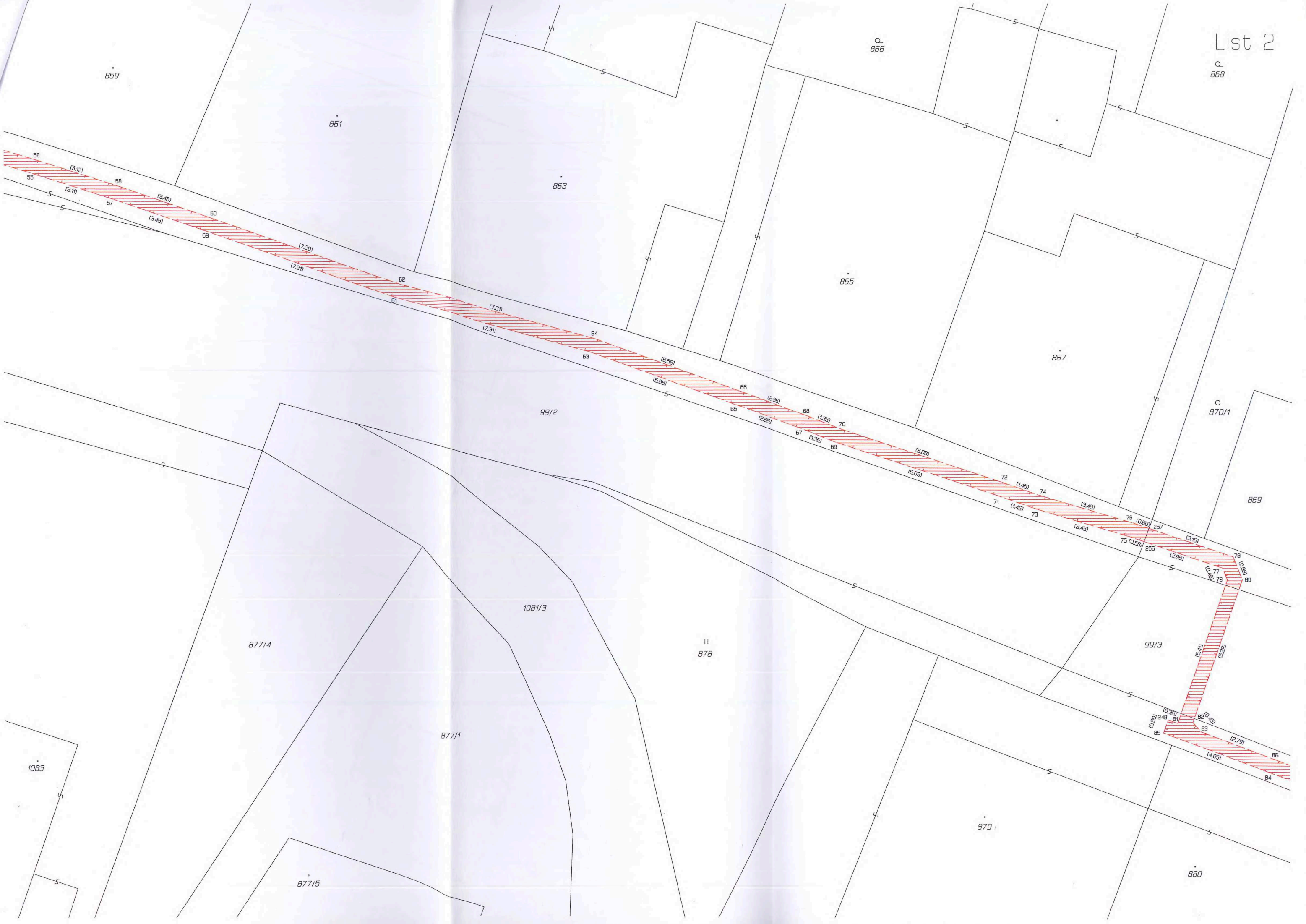
1142/49

1142/47

1142/50

1142/317

- 1 (0.50)
- 2 (1.71)
- 3 (1.35)
- 4 (0.91)
- 5 (0.95)
- 6 (0.34)
- 7 (0.34)
- 8 (0.34)
- 9 (0.34)
- 10 (0.34)
- 11 (4.73)
- 12 (4.91)
- 13 (2.06)
- 14 (2.27)
- 15 (1.26)
- 16 (1.03)
- 17 (2.24)
- 18 (2.22)
- 19 (0.20)
- 20 (1.51)
- 21 (1.01)
- 22 (1.51)
- 23 (2.25)
- 24 (0.88)
- 25 (1.34)
- 26 (2.34)
- 27 (3.30)
- 28 (0.22)
- 29 (1.78)
- 30 (1.47)
- 31 (2.63)
- 32 (2.59)
- 33 (0.86)
- 34 (1.26)
- 35 (1.21)
- 36 (1.32)
- 37 (2.42)
- 38 (0.88)
- 39 (2.06)
- 40 (1.95)
- 41 (1.09)
- 42 (0.88)
- 43 (1.01)
- 44 (1.04)
- 45 (3.28)
- 46 (3.21)
- 47 (1.07)
- 48 (1.07)
- 49 (1.08)
- 50 (9.23)
- 51 (9.22)
- 52 (1.17)
- 53 (1.92)
- 54 (1.92)
- 55 (6.05)
- 56 (6.07)



859

861

863

866

868

865

867

870/1

869

99/2

877/4

1081/3

878

99/3

1083

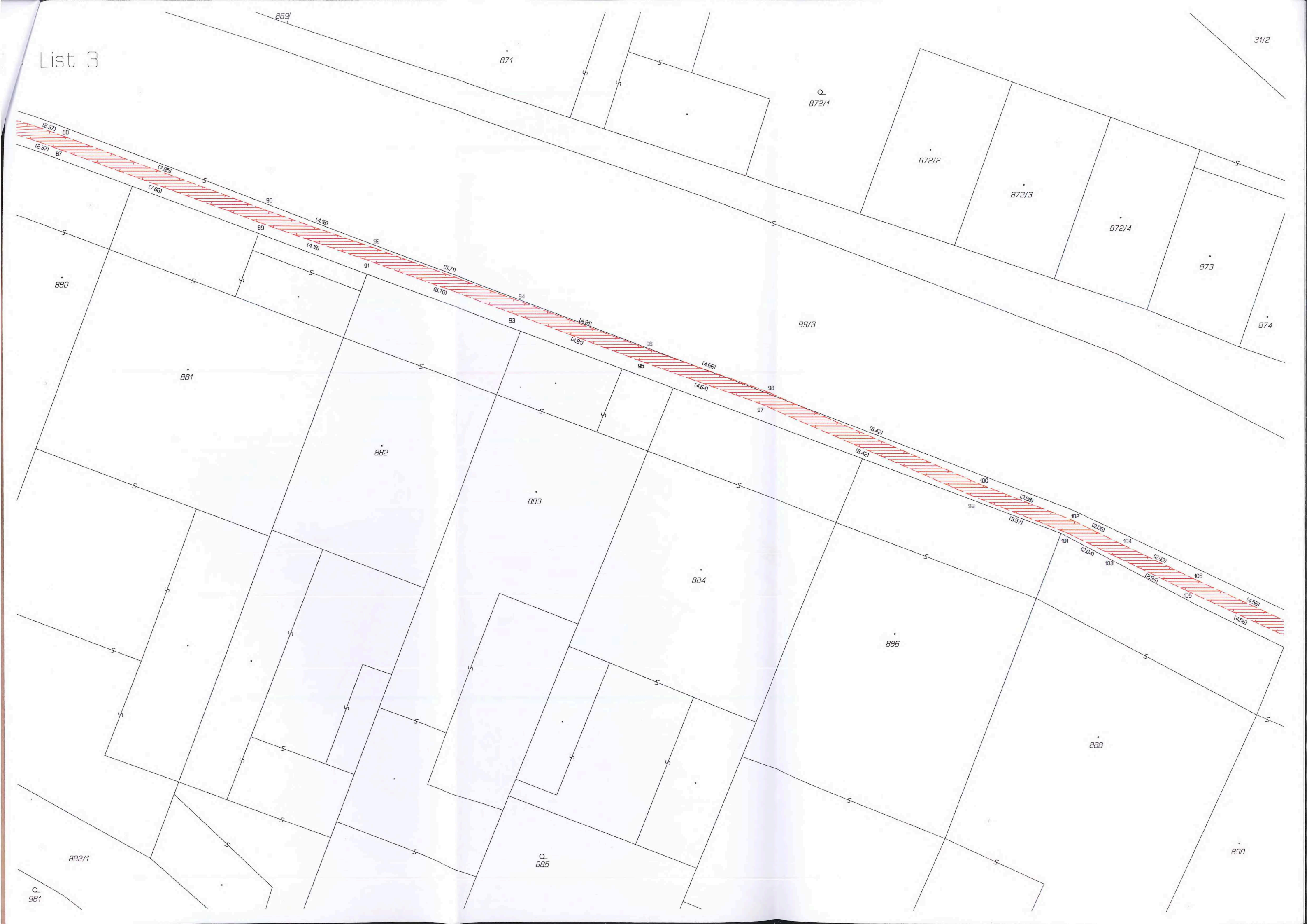
877/1

877/5

879

880

List 3



List 4

99/3

1407/11 →

1407/12 →





List 5

901

903

905

906

906

910

912

915/2

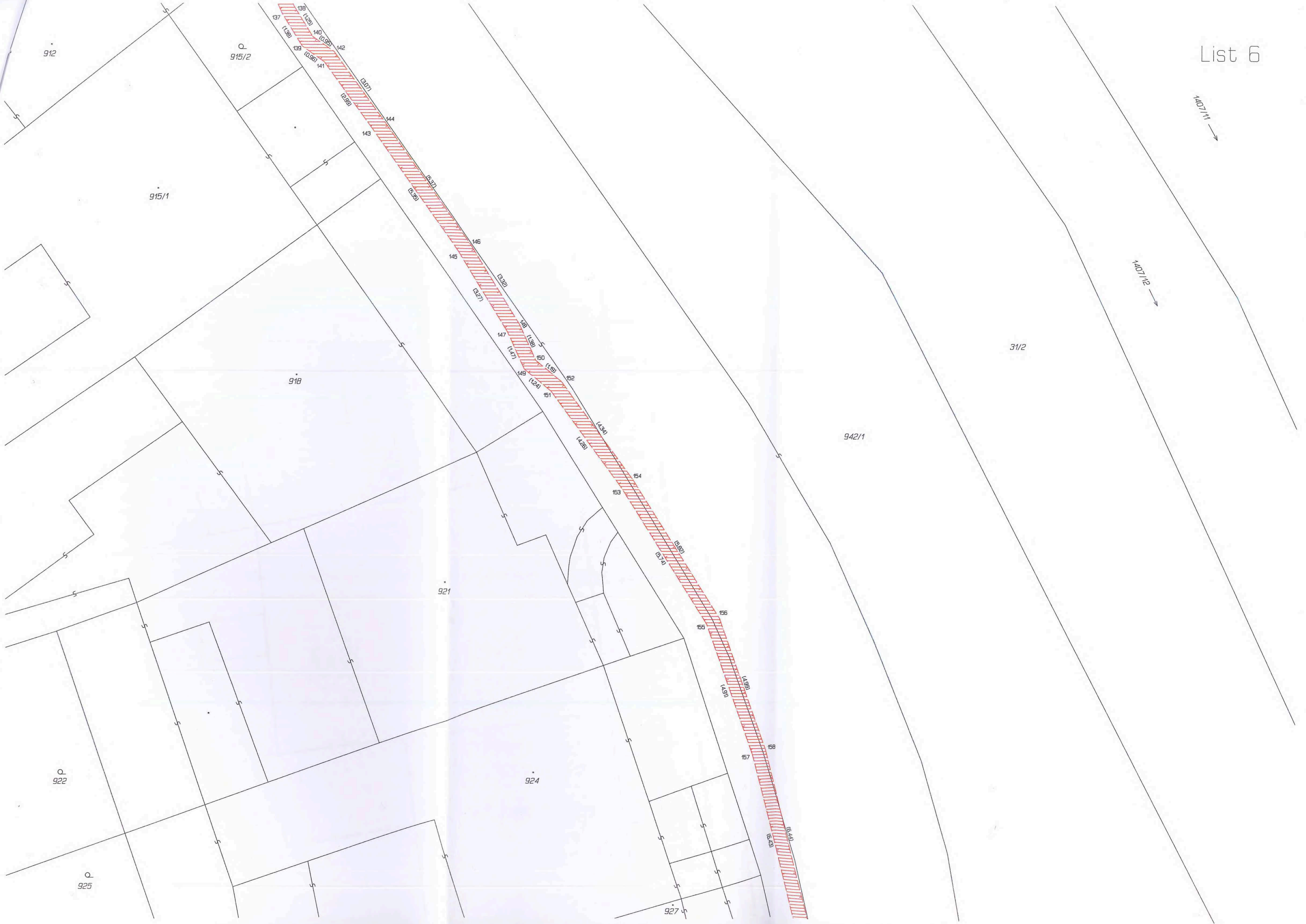
920/1

942/1

942/2

K07/13

K07/14



912

Q  
915/2

915/1

918

921

Q  
922

924

Q  
925

927

31/2

942/1

1407/11 →

1407/12 →

137 (1.38) 138 (1.39) 140 (1.41) 142 (1.43)  
139 (1.39) 141 (1.41) 143 (1.43)

(3.27) 144

143

(3.27) 146

145

(3.27) 148

147

(1.47) 149 (1.49) 152

151

(3.27) 154

153

(3.27) 156

155

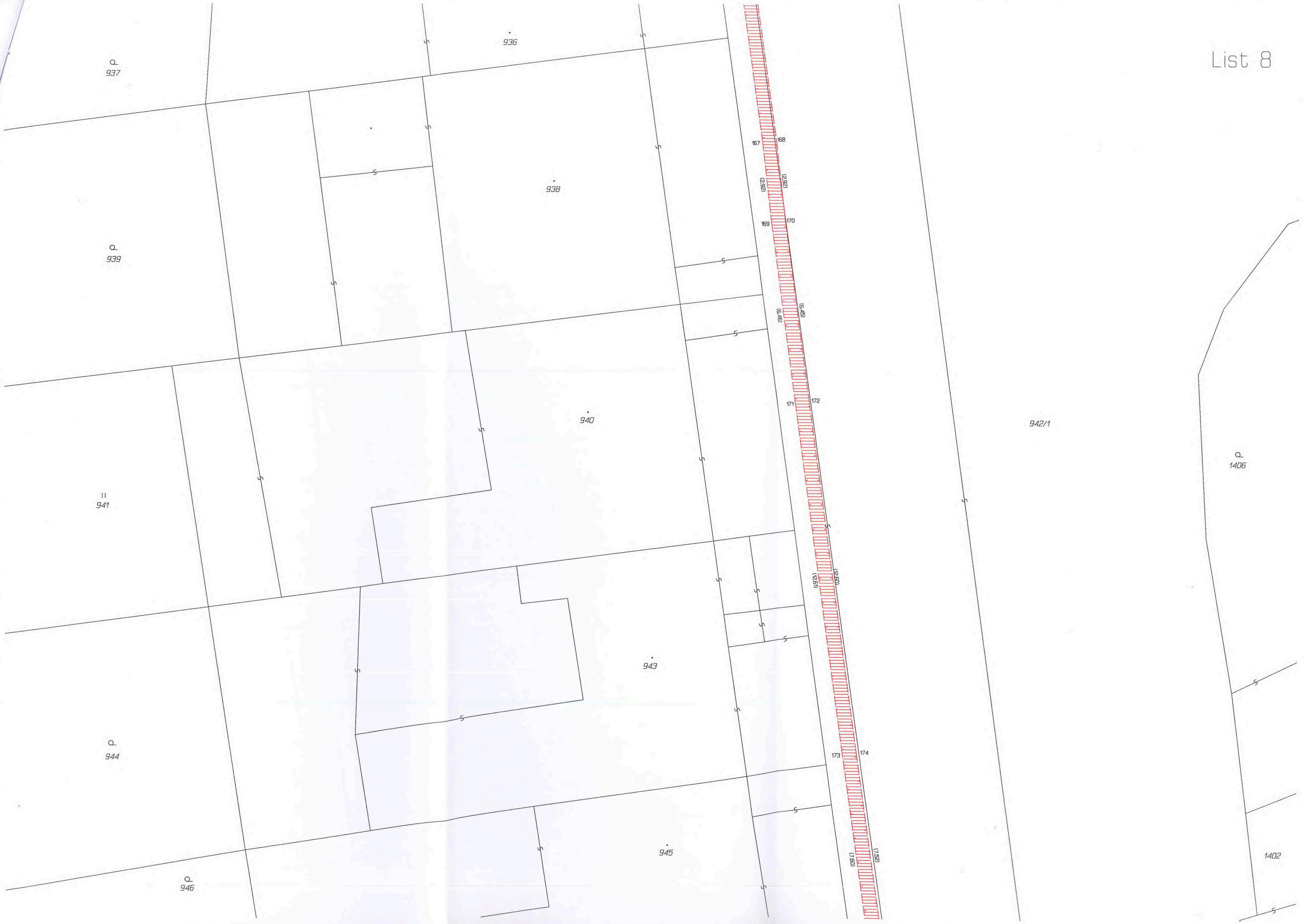
(1.55) 158

157

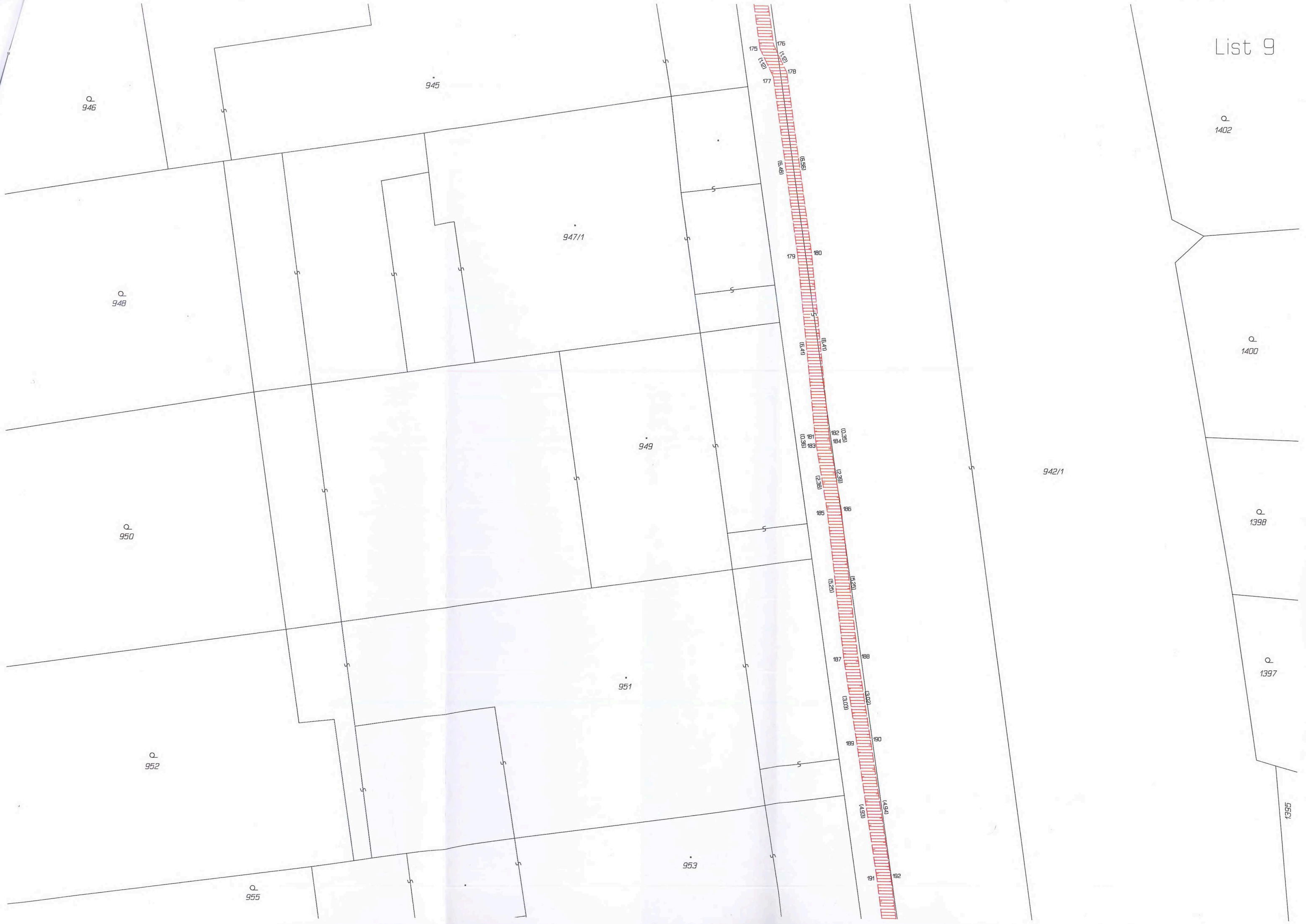
(1.57) 158

(1.57) 158









Q  
946

946

Q  
948

947/1

Q  
950

949

942/1

Q  
952

951

Q  
955

953

Q  
1402

Q  
1400

Q  
1398

Q  
1397

1395

175  
176  
177  
178

(87.9)  
(85.9)

179  
180

(84.1)  
(84.1)

181  
182  
183  
(85.3)  
(85.3)

(2.28)  
(2.28)

185  
186

(3.23)  
(3.23)

187  
188

(3.07)  
(3.07)

189  
190

(6.57)  
(6.57)

191  
192



Q.  
1392

Q.  
1390

1389

Q.  
1388

1387

1385/1

228 (0.65)  
230 (0.62)  
232



963

962

964

Q.  
965

Q.  
967

966/2

966/1

968

942/2

942/1

205

206

(0.95)

(0.95)

207

208

(0.83)

(0.83)

209

210

(0.89)

(0.71)

211

212

(4.59)

(4.64)

213

214

(2.11)

(4.59)

215

216

(7.07)

(7.32)

218 (0.68)

220

217 (0.86)

219

(3.77)

(3.74)

221

222

(2.85)

(2.84)

223

224

(2.14)

(1.94)

225

226 (0.97)

(1.31)

227

228

(0.62)

230

232

