

4422/37

5037/25

4422/4

5983

4422/4

8458

5982

8459

8150/1

4422/38

8457

4422/37

205

8456

4422/37

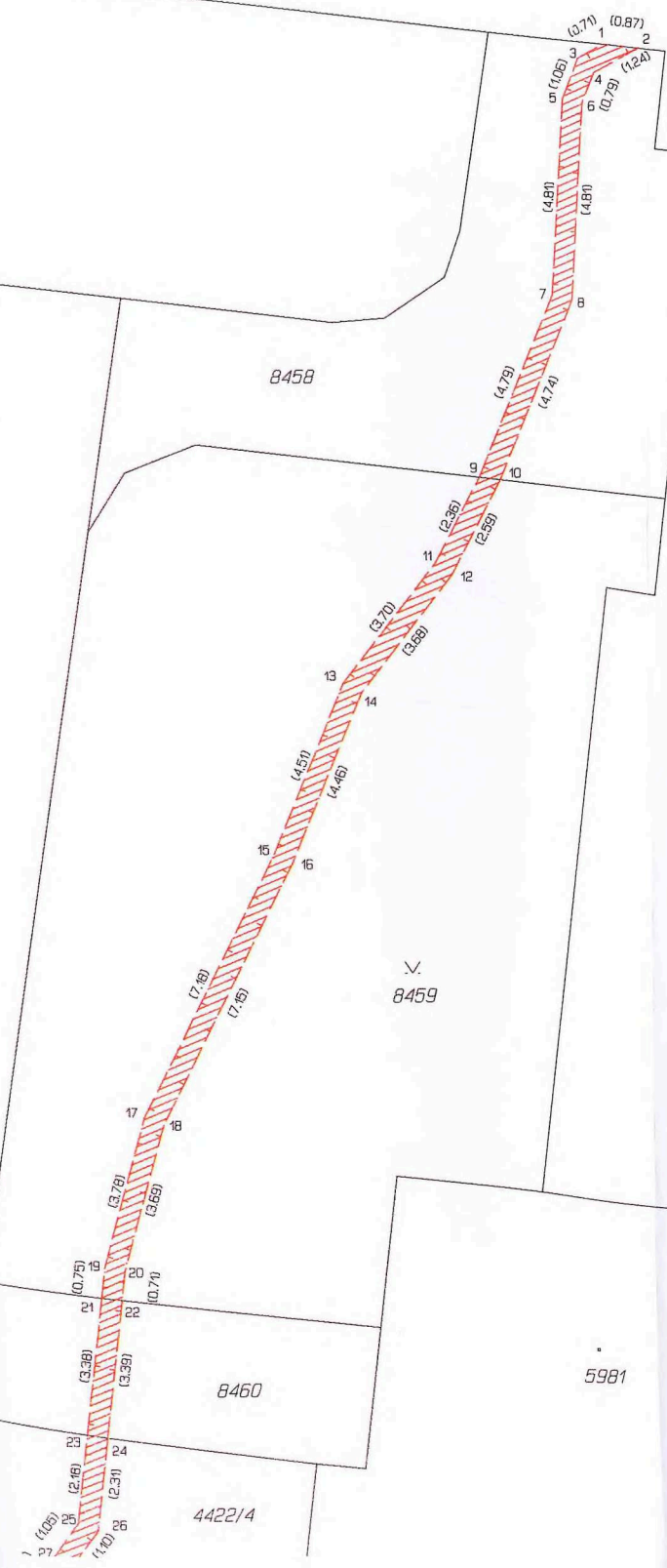
8460

5981

4422/4

8150/1

5037/14





4422/37

8150/1

∇  
8431

8432

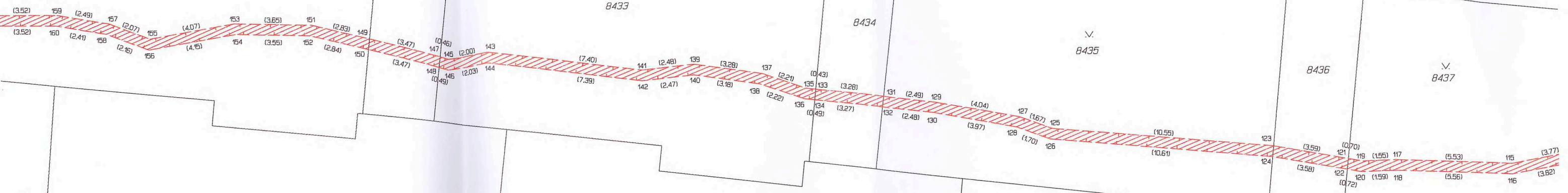
∇  
8433

8434

∇  
8435

8436

∇  
8437



8380/1

6207

6186/1

8425

6186/1

6188/7

6188/6

6186/1

8150/1

8388



8426

8427

8428

8429

8430

5971

5972

5973

8454

8453

8452

8380/1

8150/1

V.  
8416

8388

V.  
8417

5970

8419

V.  
8420

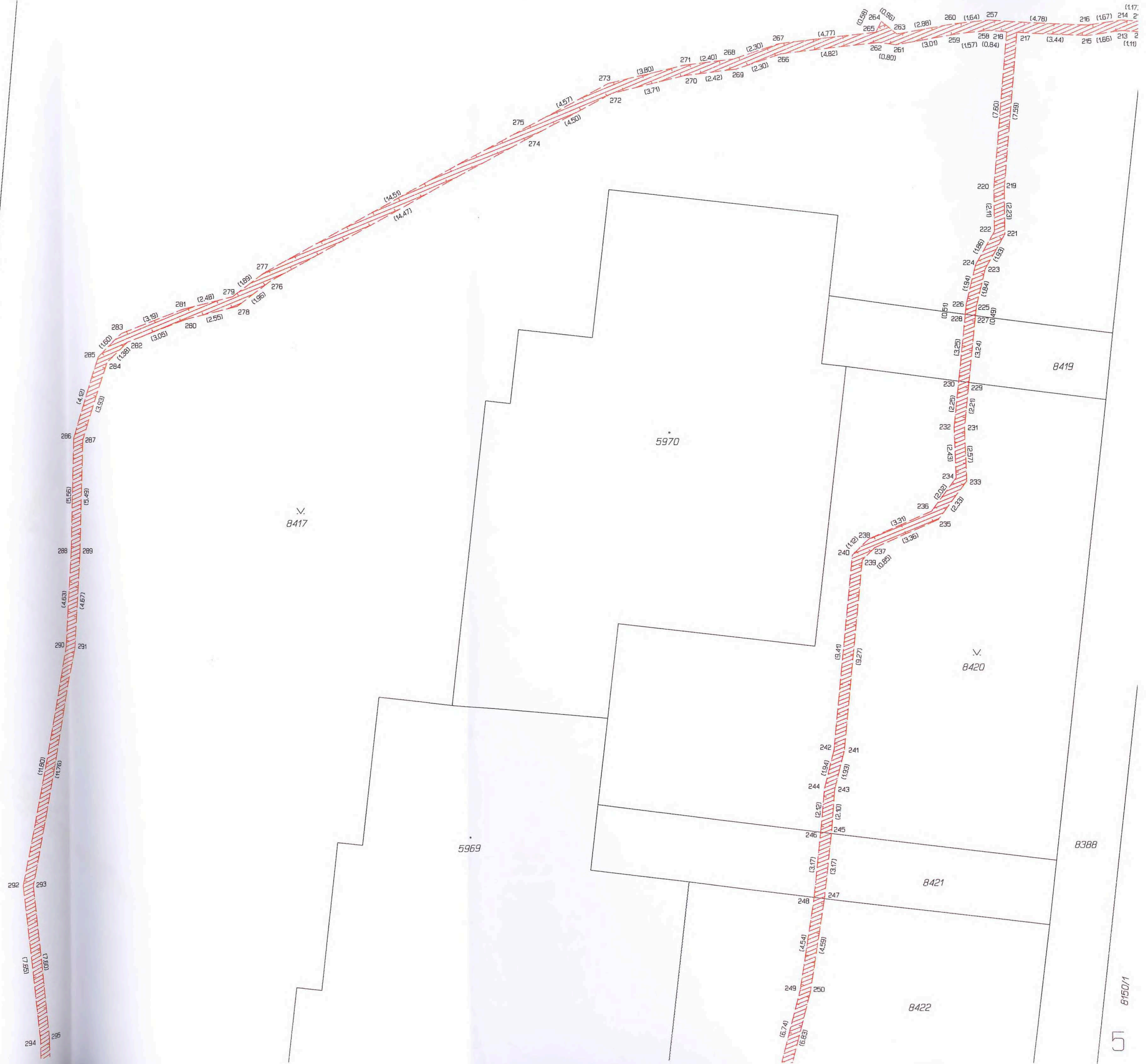
5969

8388

8421

8422

8150/1





V.  
8416

V.  
8415

V.  
8337

8336

V.  
8389

8388

V.  
8417

5969

5968

8422

8150/1

V.  
8391

8392

V.  
8393

R192

9384

8391

6192

8393

8394

8150/1

8150/1

8395

8396

8396

6193

8397

6194

8398

8399

6198

8403

8405

8406

8407

6199

8443

8408

8409

6200

8340

6201

8410

8411

6195

6196





6201

V. 8411

6202

V. 8413

6203

V. 8340

8335/1

V. 8342

V. 8346

6197

V. 8403

V. 8391

8150/1

8343

8348

8344

8347

8345

576

579

581

582

583

584

585

586

587

588

589

590

591

592

593

594

595

596

597

598

599

600

601

602

603

604

605

606

607

608

609

610

611

612

613

614

615

616

617

B412

B414

(1.37)

(2.4)

(2.35)

(1.28)

(2.70)

(2.70)

(6.60)

(6.70)

(1.45)

(2.36)

(2.57)

(5.52)

(5.37)

(1.41)

(1.65)

(3.59)

(3.71)

(6.07)

(6.21)

(1.88)

(1.89)

(3.40)

(3.55)

(0.89)

(1.07)

(2.93)

(2.93)

(1.59)

(1.73)

(1.71)

(8.57)

(14.41)

(14.44)

(0.50)



6207

8381

5924

8380/1

8382

8388

8150/1

837E

8383/2

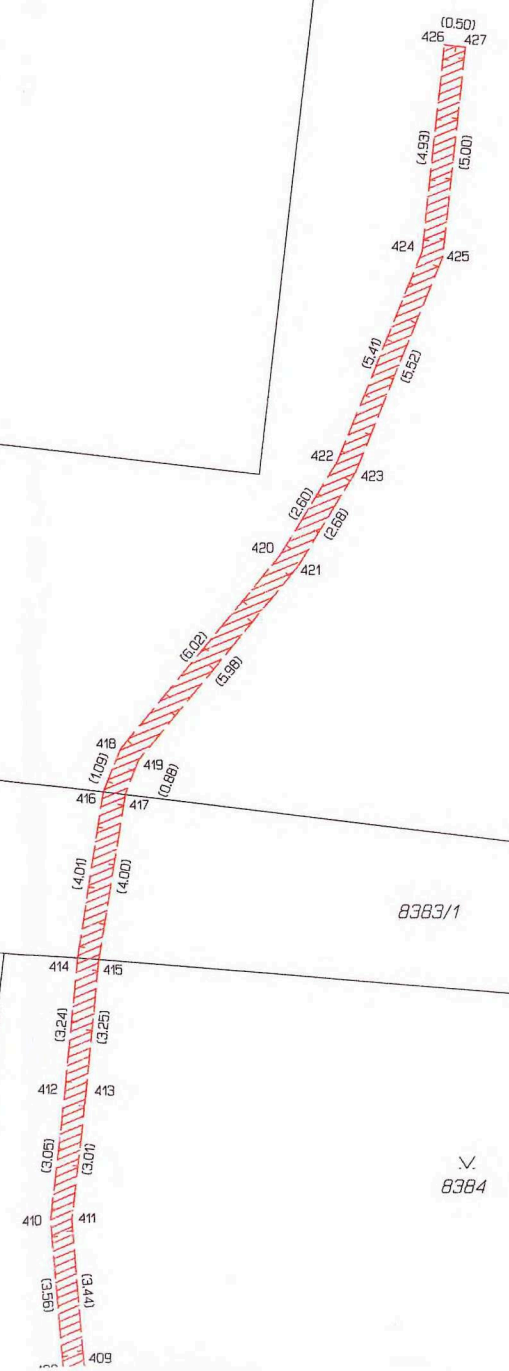
8383/1

8377

5925

8384

8376





8380/1

8388

8150/1

8386

✓  
8399

8400

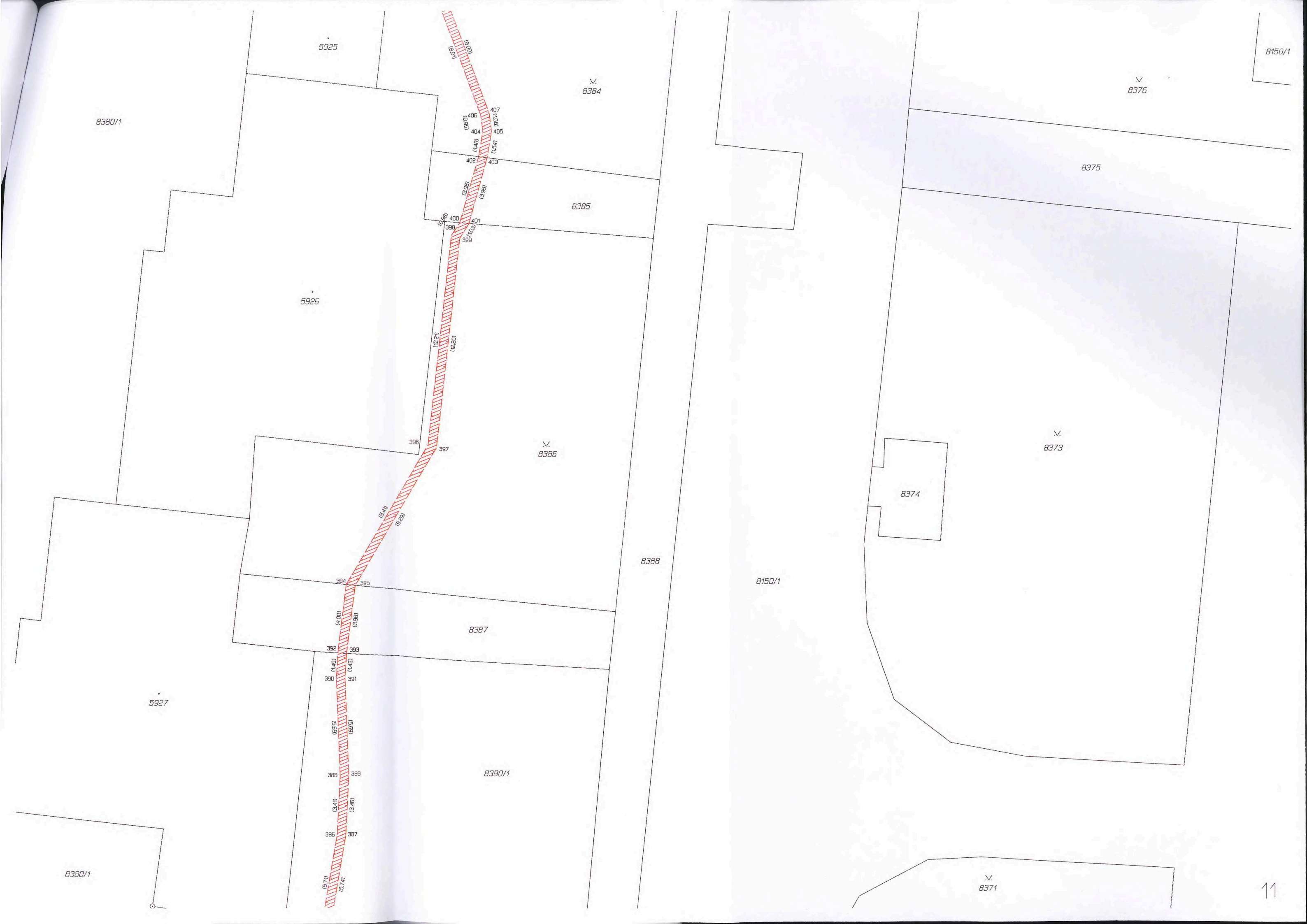
✓  
8401

8402

✓  
8391

6196

5927



5925

8384

8150/1

8376

8380/1

(0.06)  
(0.06)  
(0.06)

(0.97)  
(0.97)  
(1.48)  
(1.48)

407  
(0.07)  
406  
(0.07)  
405  
(1.54)  
404  
(1.54)  
403

8385

8375

5926

(2.99)  
(3.95)  
(1.98)

400  
(1.03)  
399  
(1.03)

8386

8373

(12.21)  
(12.20)

396  
397

8374

(9.41)  
(9.29)

8388

8150/1

394  
395

8387

(4.00)  
(3.98)

392  
(1.45)  
391  
(1.43)

5927

(6.93)  
(6.93)

388  
(3.40)  
387  
(3.46)

8380/1

(5.71)  
(5.74)

8380/1

8371

