



Ref. No. LS-3-76/ČJ-2023-9800KR

Prague 15.6.2023

No. of pages 2

SAFRAN Helicopter Engines Germany
Borsteler Chausse 43
22453 Hamburg
GERMANY

OrderWe are ordering the **overhaul** of the item below:

	S/N	pc
ENGINE ARRIUS 2B2	32458	1

Please send the invoice with due date 30 days you send to the **recipient's address**.

In the invoice we need both following addresses :

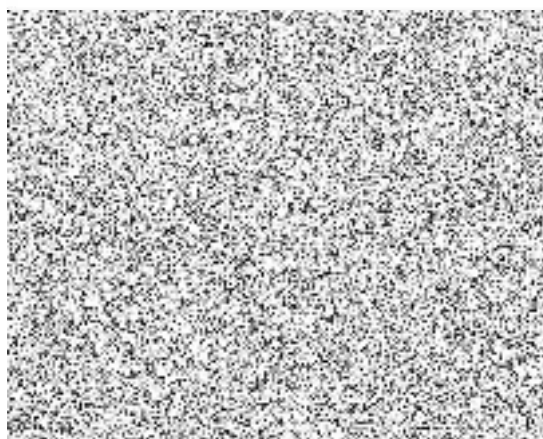
Customer : Ministerstvo vnitra ČR
Nad Štolou 936/3
170 34 Praha 7

Recipient : Policie ČR letecká služba
pošta 614, schr. 35
161 01 Praha 6
IČO : 00007064
DIČ : CZ00007064
Bank.spoj. 5504-881/0710

Spare parts are to be delivered directly to our Police Aviation Department. The address is :

Delivery address:

Czech Police Aviation Department
Vaclav Havel Airport Prague
south area
Hangar "D"

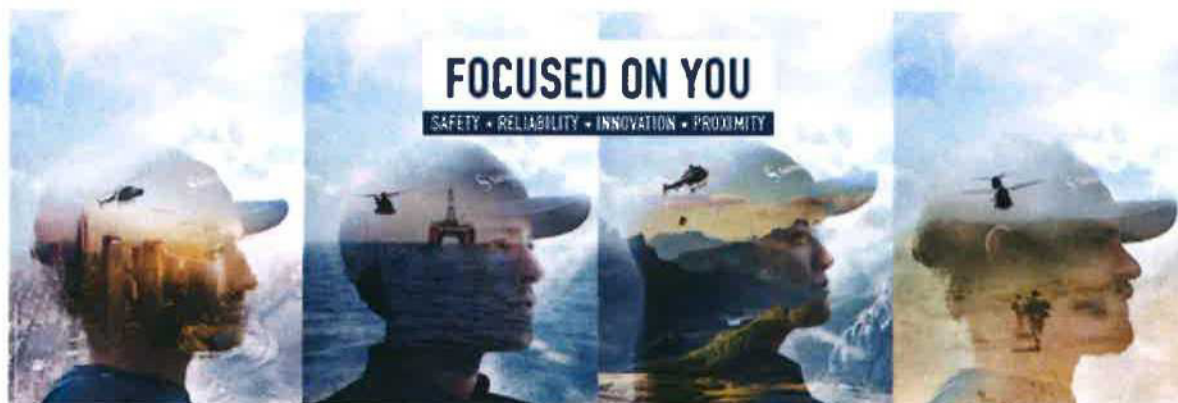


Contract – 10/21/IG.FOS

**Zakázka je vypořádána Smlouvou o materiálně technickém zabezpečení
č. j. LS-758-24/Čj-2019-9800KR**

OVERHAUL QUOTATION

Customer Name:	MINISTRY OF THE INTERIOR CR		
RFQ/PO reference:	LS-3-76/CJ-2023-9800		
Contract:	10/21/IG.FOS		
Asset:	Complete Engine ARRIUS 2B2 / 32458		
Date:	2023-10-05		
Quote reference:	CPI-2023-02239	Version:	1
Validity of the offer:	2023-11-05		
Your contact:			
Your Front office:	Safran Helicopter Engines Germany GmbH		



"This document and/or the documents accompanying this facsimile contain information from SAFRAN HELICOPTER ENGINES, which may be confidential and/or legally privileged. THE DOCUMENTS ARE INTENDED ONLY FOR THE PERSONNAL AND CONFIDENTIAL USE OF THE ADDRESSEE IDENTIFIED ABOVE. Any other use, duplication or disclosure of said information remains subject to SAFRAN HELICOPTER ENGINES prior written consent."

Safran Helicopter Engines Germany GmbH

Geschäftsführung Francis Larribau

Sitz der Gesellschaft Hamburg - Amtsgericht Hamburg HRB 47905

Borsteler Chaussee 43 – D-22453 Hamburg



Bank details

Deutsche Bank AG

IBAN DE89 3607 0050 0113 1184 00

BIC DEUTDE33XXX



OVERHAUL QUOTATION

Dear Customer,

Please find enclosed the **quotation** for your ARRIUS 2B2 / 32458 / Complete Engine, sent to Safran Helicopter Engines Germany GmbH for OVERHAUL . This quote is based on the strip inspection and analysis of your asset.

You will find attached : the **cost synthesis summary**, a **glossary** of the vocabulary used in these documents, the **General Sales Conditions** as well as the **technical report** TR23-32569-V1.

The total net amount of the offer is 343,278.40 EUR for your reference LS-3-76/CJ-2023-9800.

Please note that this offer is valid until 2023-11-05.

After receipt of acceptance on this offer, SAFRAN HELICOPTER ENGINES estimates your asset will be delivered within 20 weeks approx.

Please sign and return this quote at your earliest convenience so that the work envisioned may begin without delay.

If you require any additional information or need any help, please do not hesitate to contact me.

Best regards,



Safran Helicopter Engines
Borsteler Chaussee 43
22453 - Hambourg(Germany)

Approval Signature: _____

Printed Name: _____

Date: _____

Option Number Chosen: _____
(if applicable)



SAFRAN HELICOPTER ENGINES

Quote overview

Price breakdown in EUR

	Non modular	Module 1	Module 2	Module 3	Module 4	Module 5	Module 6	Total
Parts	54,071.38	37,905.00	235,751.00	0.00	0.00	0.00	0.00	328,688.38
New	11,216.18	25,564.00	190,643.00	0.00	0.00	0.00	0.00	227,423.18
Repaired	33,233.20	5,821.00	34,981.00	0.00	0.00	0.00	0.00	74,035.20
Systematics	9,582.00	6,520.00	11,128.00	0.00	0.00	0.00	0.00	27,230.00
Labour	3,112.00	10,575.00	20,652.00	0.00	0.00	0.00	0.00	34,339.00
	Complete engine	Module 1	Module 2	Module 3	Module 4	Module 5	Module 6	Total
Tests	6,775.00	0.00	0.00	0.00	0.00	0.00	0.00	6,775.00
Additional costs								0
Gross amount:								369,822.38

Discounts & gesture

	Total discounts	Discounts details
Upgrades & Commercial Program	26,543.98	
TOTAL	26,543.98	

Net amount:	343,278.40
Down Payment already paid	0.00
Total due:	343,278.40

Prices are net. All taxes, import or export duties, VAT and similar charges are excluded, 2023 economic conditions applied.

Additional information

OVERHAUL QUOTATION

Asset availability post-repair

Please refer to Technical report TR23-32569-V1 accompanying this quotation

Sales conditions

Warranty conditions	9 months or 800 operation hours
Release certificate type	FAA 8130-3–DUAL EASA
Payment terms	30 days from date of invoice
Down payment request at quotation approval	30 %
Down payment already paid to be deducted from net amount	0.00
Delivery terms <i>In accordance with ICC 2010</i>	FCA
Delivery place	SHE GERMANY - HAMBURG

**Supersedes General Sales Conditions*

Appendix 1 - Detailed Quotation

Labour, Test & Systematic

Type	Final price
Labour	34,359.00
Tests	6,775.00
Systematic parts	27,230.00

Labour, Test & Systematic Net amount: 68,364.00 EUR

Parts

Module 1

Type	Repair Type*	PN	Designation	Qty	TU/SB embodied
R	RA	0319148130	CASING,REDUCTION GEARBOX,FRONT	1	
N	N	9609000555	BEARING,FRONT,GEAR,BREATHER	1	
N	N	9609000584	BEARING,FRONT,GEAR,OUTPUT	1	
N	N	9560176710	SEAL,MAGNETIC,BEARING	1	TU-89
N	N	9606600302	BEARING,REAR,GEAR,FUEL PUMP	1	tu156
N	N	9609000435	BEARING,FRONT,GEAR,INTER.	1	
N	N	9609000435	BEARING,REAR,GEAR,INTER.	1	
N	N	9609000587	BEARING,SHAFT,REFERENCE	1	
N	N	9560176640	HYDRODYNAMIC MAGNETIC SEAL	1	TU-87
N	N	9609000568	BEARING,FRONT,GEAR,STARTER	1	
N	N	9560170580	SEAL,POWER	1	
N	N	0319768260	PLATE,EQUIPPED	1	TU-94 (PCW)
R	RC	0177987030	BOX,CONFORMATION	1	
N	N	9560168580	RING,DAMPING	1	
N	N	9560167790	RING,DAMPING	1	

Net amount

Module 2

Type	Repair Type*	PN	Designation	Qty	TU/SB embodied
N	N	0319310300	FLAME TUBE,ASSY	1	
N	N	0319210050	DIFFUSER,CENTRIFUGAL	1	TU125
N	N	231941A7J0	BLADE,POWER TURBINE	31	TU164
N	N	9609000621	BEARING,FRONT,GENERATOR	1	
R	RC	0319218710	COVER,CENTRIFUGAL COMPRESSOR	1	
R	RA	0319212920	IMPELLER,CENTRIFUGAL	1	
R	RA	0319218690	NOZZLE GUIDE VANE,HP	1	
N	N	9609000648	BEARING,REAR,GENERATOR	1	
R	RC	0319417960	DIFFUSER,EXHAUST,ASSY	1	
N	N	9609000454	BEARING,POWER TURBINE	1	
R	RA	0319217920	RING ASSY, HP TURBINE	1	
R	RA	0319412140	NOZZLE GUIDE VANE,POWER TURBINE	1	
N	N	9560163950	SEGMENT,RING,HP TURBINE	2	
N	N	9560163950	SEGMENT,RING,HP TURBINE	2	
N	N	0319212100	RING,SEALING	1	
R	RA	0319218160	CASING,AIR INTAKE,ASSY	1	
N	N	0319410050	DUCT	1	TU148
N	N	0319410050	DUCT	1	TU148
R	RC	0177987030	BOX,CONFORMATION	1	
R	RC	0319210460	NUT,SPLINED	1	
Net amount					

LRUs/ACCESSORIES/EQUIPMENTS

Type	Repair Type*	PN	Designation	Qty	TU/SB embodied
R	RB	0319850740	PMP AND MET. VLVE ASSY,ADJ.	1	
R	RC	0319768270	HARNESS,CTL AND MONITORING	1	
R	RC	0319950870	VALVE ASSY,ADJUSTED	1	TU 157
R	RC	0319768390	HARNESS,REGULATION	1	TU 137
N	N	9550752683	HARNESS,PYROMETRIC	1	
N	N	9550179145	SWITCH,LOW FUEL PRESSURE	1	TU 162
N	N	9520011546	PLUG,MAGNETIC	1	
N	N	0319630130	PIPE	1	TU 117A
N	N	9560167160	INDICATOR,VISUAL,BLOCKAGE	1	
R	RC	0319637140	HALF MNFLD ASSY,INJECTOR,LT	1	TU 117A
R	RC	0319637130	HALF MNFLD ASSY,INJECTOR,RT	1	TU 117A
R	RC	0319637150	PIPE ASSY,PREFERRED INJ.	1	TU 117A
N	N	0319630080	COVER	1	TU 117A
N	N	0319630110	BOX ASSY,BOTTOM	1	TU 117A
R	RC	0319307840	INJECTOR,STARTER,ASSY	1	
R	RC	0319307840	INJECTOR,STARTER,ASSY	1	
N	N	9550171540	CABLE,IGNITION	1	

Net amount

Parts Net amount:**274,914.40 EUR**

* Denominations in Appendix 3

OVERHAUL QUOTATION

Appendix 2 – Terms & conditions

Quote acceptance

The acceptance of the present document converts this offer into a contract in accordance with the latest issue of the SAFRAN HELICOPTER ENGINES GERMANY GMBH General Sales Conditions which are deemed to have been read and accepted by the Customer. Upon approval of this proposal, your purchase order must refer to our commercial offer number.

Due to the nature of our activity, the need for additional work may only become apparent after your acceptance has been received, as such need was not identified at the time of the evaluation. In this case, we would have to :

- Postpone work performance,
- Issue a quotation corresponding to the work actually needed,
- Submit the quotation for your approval.

Note: Such additional work may be essential for the performance of the work under this quote; therefore refusal of such above quotation will lead to the cancellation of this offer.

Refusal of quote

1- Failing receipt of customer acceptance within 30 days, SAFRAN HELICOPTER ENGINES GMBH will charge in the offer currency the following :

Fixed price for Material protection	1,362.00
Daily cost for storage	67.56
Update of quotation from 1 to 12 Months	2,102.00
2- Once quote expires without response from customer, SAFRAN HELICOPTER ENGINES GMBH will invoice a quote establishment fixed price	13,663.00

3- In the event that customer does not want to proceed with the repair of the equipment, SAFRAN HELICOPTER ENGINES GMBH will charge fees based on the three options below :

A/ Material not returned to customer* (strap on site)	18,645.00
(meaning transfer of ownership of the equipment to SAFRAN HELICOPTER ENGINES GMBH as described in GSC)	
B/ Material return to customer	35,906.00
(includes quote establishment fee, excludes return of non-repairable parts)	
C/ Material return to customer	28,686.00
(includes quote establishment fee, includes return of non-repairable parts)	

Note*: this Fee includes quote establishment fixed price (covering the services carried out: disassembly, inspection and assessment costs)

Appendix 3 – Glossary

Labour : Receiving, inspection, disassembly, cleaning, NDT, metallurgical inspections, dimensional inspections, evaluation, technical report, quote establishment, balancing, assembly.(not including reworking of parts).

Test : Bench, test, fuel, oil.

Systematic parts : Fixed price for consumables systematically replaced during repair/overhaul process.

New parts : Unserviceable parts replacements.

Repaired parts : Rework of parts in accordance with SAFRAN HELICOPTER ENGINES repair manual.

Repaired by replacement parts : Replacement of repairable parts by equivalent serviceable repaired parts delivered from SAFRAN HELICOPTER ENGINES stock. Meaning transfer of ownership of those goods between customer and SAFRAN HELICOPTER ENGINES.

Scrapped parts : Parts which cannot be economically repaired or parts which cannot be recovered by applying acceptable repair methods.

Missing parts : Parts replaced by new parts.

Quote establishment fixed price : Receiving, inspection, disassembly, cleaning, NDT, metallurgical inspections, dimensional inspections, evaluation, technical report, quote establishment.

LRU/Accessory : Removable functional assembly or functional assembly integrated into a Module or Engine.

Equipment : Functional assembly including accessories and connecting parts screws , brackets, piping...) integrated into a Module or Engine.

Parts detailed:

N	New
R	Repair
M	Missing at arrival
RA	Repair level A
RB	Repair level B
RC	Repair level C
OH	OverHaul
FT	Functional Test
S/E	Repaired by replacement

OVERHAUL QUOTATION

Appendix 4 – General Sales Conditions (1/3)

EXTRACT FROM SAFRAN HELICOPTER ENGINES GENERAL SALES CONDITIONS .

The complete version of our generals sales conditions is attached to your offer provided by your Customer Support Representative.