



# VÝKAZ DOSAVADNÍHO A NOVÉHO STAVU ÚDAJŮ KATASTRU NEMOVITOSTÍ

Dosavadní stav				Nový stav										
Označení pozemku parc. číslem	Výměra parcely		Druh pozemku Způsob využití	Označení pozemku parc. číslem	Výměra parcely		Druh pozemku Způsob využití	Typ stavby Způsob využití	Způsob určení výměry	Porovnáni se stavem evidence právních vztahů				
	ha	m <sup>2</sup>			ha	m <sup>2</sup>				Díl přechází z pozemku označeného v katastru nemovitostí	dřívejší poz. evidenci	Číslo listu vlastnictví	Výměra dílu	
											ha	m <sup>2</sup>		
st. 1										st. 1		273		
st. 2/2										st. 2/2		263		
1/2										1/2		513		
3										3		255		
st. 7/2										st. 7/2		33		
7										7		244		
st. 12/2										st. 12/2		254		
st. 12/1										st. 12/1		270		
st. 14/1										st. 14/1		256		
15										15		242		
st. 16										st. 16		245		
16/2										16/2		277		
st. 17										st. 17		421		
18										18		243		
st. 19										st. 19		265		
23										23		43		
st. 28										st. 28		247		
29/1										29/1		1		
29/2										29/2		554		
34										34		556		
35										35		272		
st. 36										st. 36		259		
st. 33										st. 33		422		
st. 34/1										st. 34/1		246		
st. 39										st. 39		34		
42/1										42/1		553		
st. 42										st. 42		269		
44/3										44/3		247		
47										47		274		
48										48		253		
49										49		253		
54										54		249		
st. 55										st. 55		8		
st. 57										st. 57		1		
st. 59										st. 59		521		
st. 60										st. 60		389		
63										63		276		
st. 68										st. 68		252		
72										72		13		
st. 72										st. 72		524		
st. 73										st. 73		519		
st. 74										st. 74		529		
st. 75										st. 75		10002		
82										82		515		
83/4										83/4		565		
85/3										85/3		270		
90/9										90/9		1		
104										104		281		
217/2										217/2		557		
217/4										217/4		557		
222/2										222/2		545		
222/6										222/6		60000		
222/8										222/8		545		
265/2										265/2		557		
265/3										265/3		11		
488/2										488/2		554		
778/2										778/2		511		

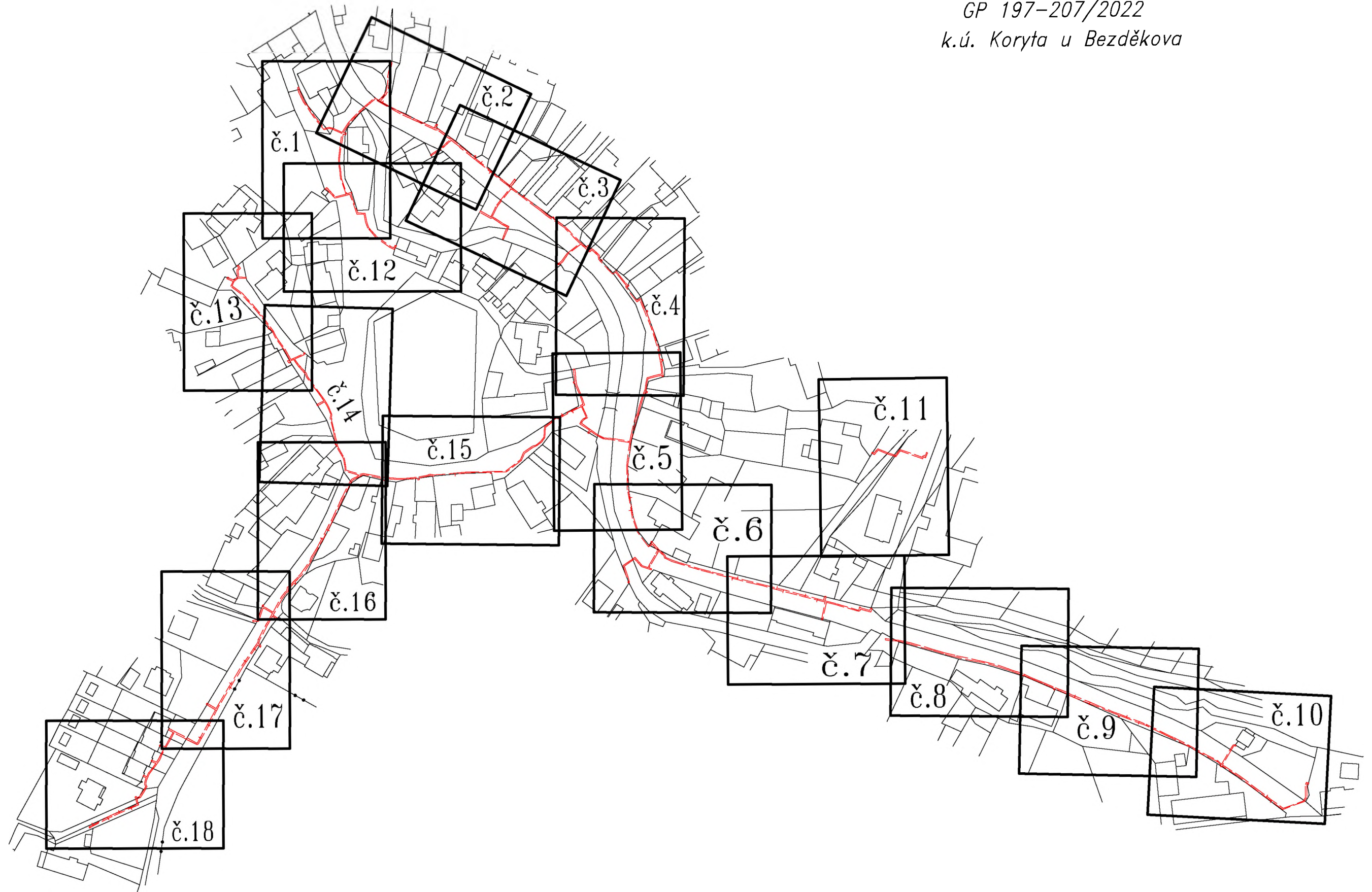
# VÝKAZ DOSAVADNÍHO A NOVÉHO STAVU ÚDAJŮ KATASTRU NEMOVITOSTÍ

Dosavadní stav				Nový stav										
Označení pozemku parc. číslem	Výměra parcely		Druh pozemku Způsob využití	Označení pozemku parc. číslem	Výměra parcely		Druh pozemku Způsob využití	Typ stavby Způsob využití	Způsob určení výměry	Porovnání se stavem evidence právních vztahů				
	ha	m <sup>2</sup>			ha	m <sup>2</sup>				Díl přechází z pozemku označeného v katastru nemovitostí	dřívější poz. evidenci	Číslo listu vlastnictví	Výměra dílu	
												ha	m <sup>2</sup>	
778/3										778/3		278		
778/11										778/11		277		
969/1										969/1		1		
969/3										969/3		1		
969/4										969/4		1		
969/18										969/18		1		
974										974		247		
993										993		540		
1010										1010		1		
1011/1										1011/1		242		
1011/3										1011/3		1		
1025/2										1025/2		575		
1031										1031		250		
1036										1036		246		

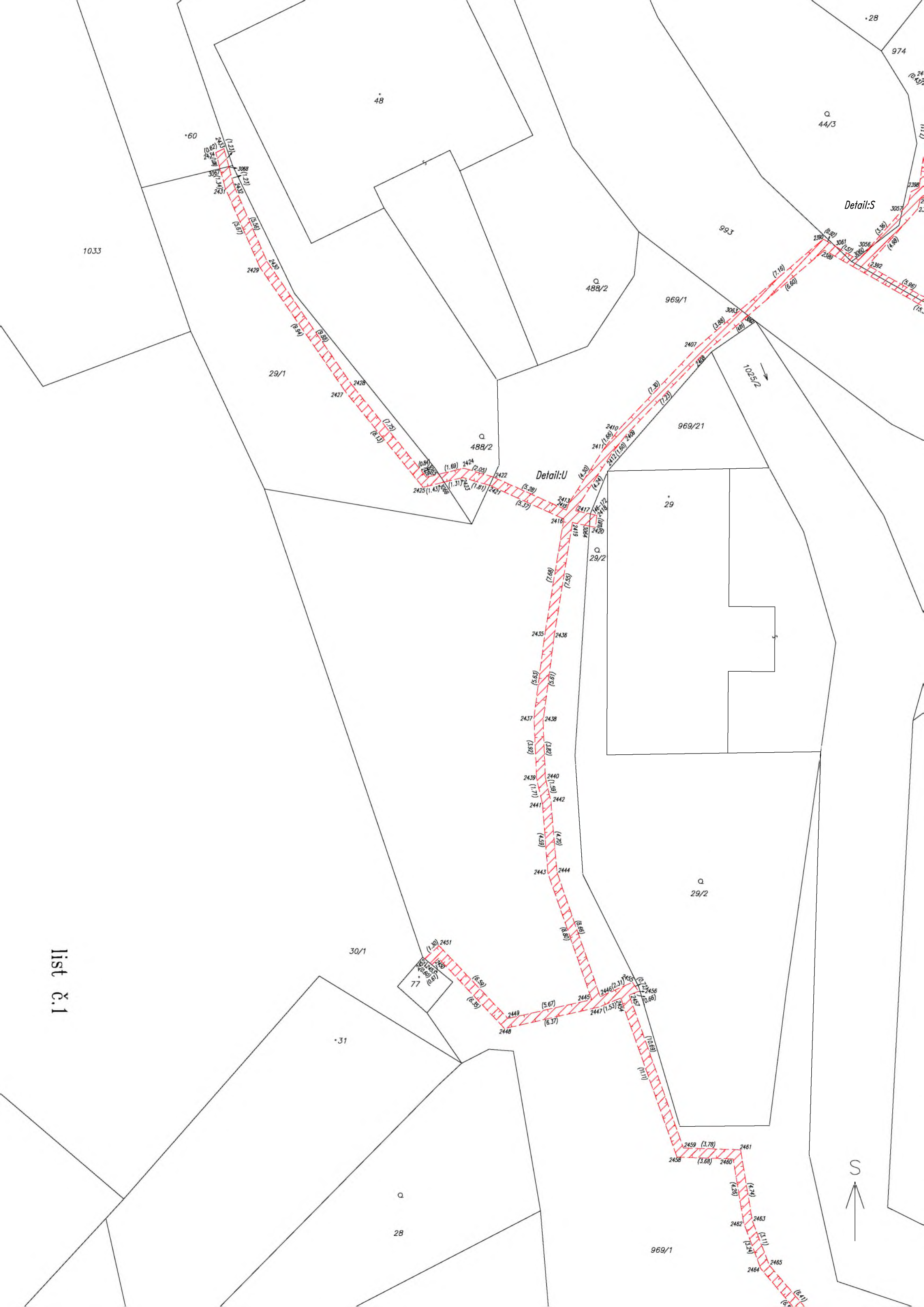
# PŘEHLED LISTŮ VÝKRESU

GP 197-207/2022

k.ú. Koryta u Bezděkova



list č.1





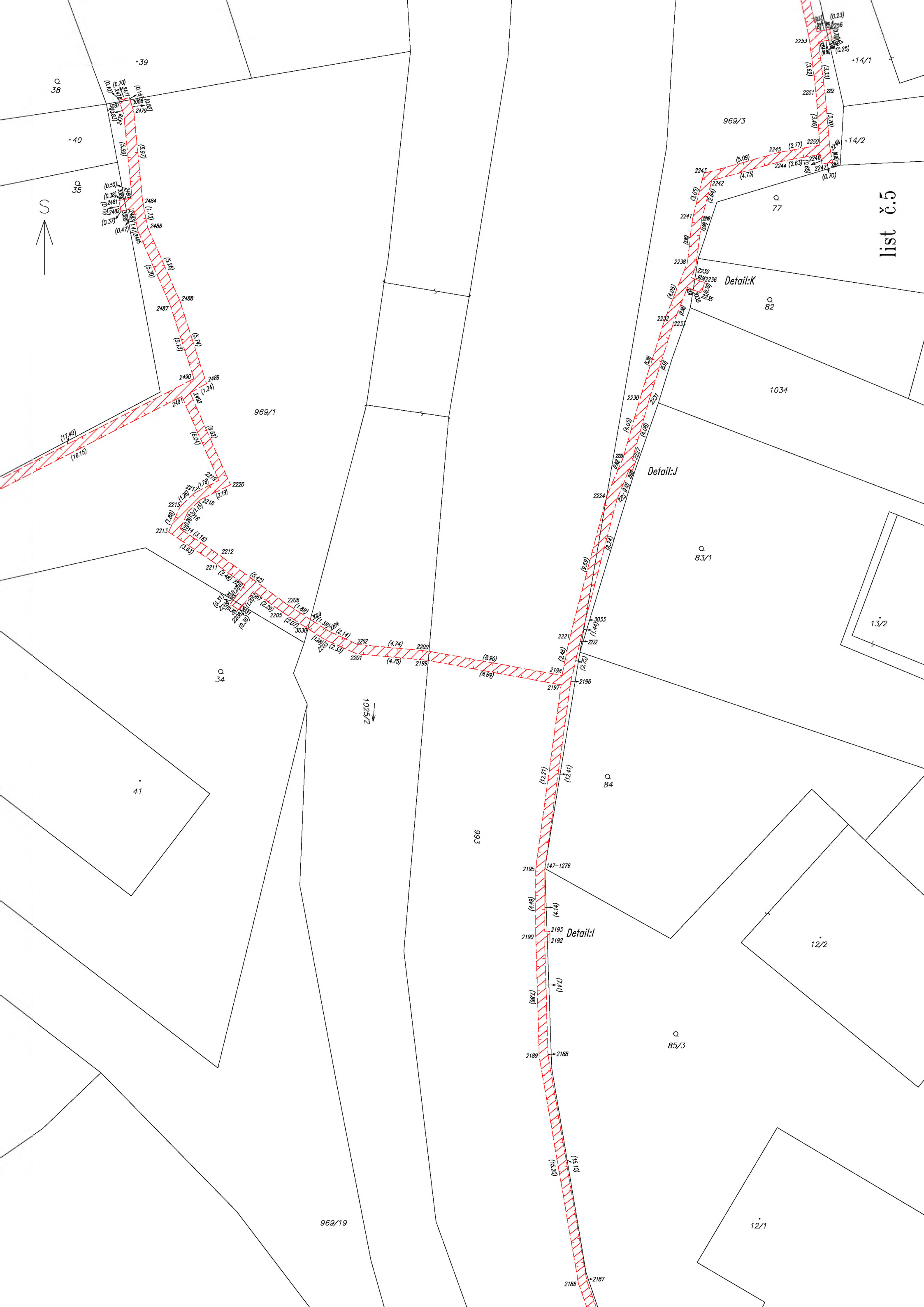












list č.5

Detail:K

Detail:J

Detail:I

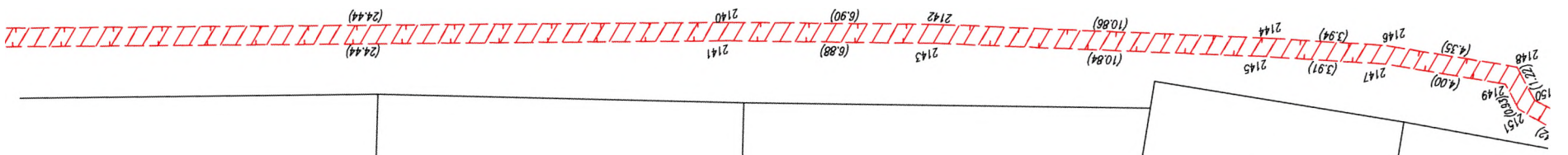


list 8.6

87

76

11

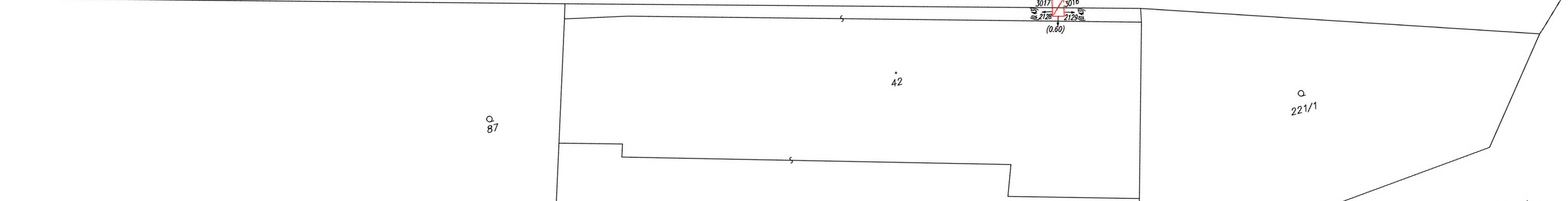
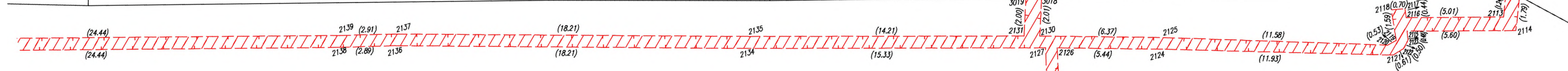
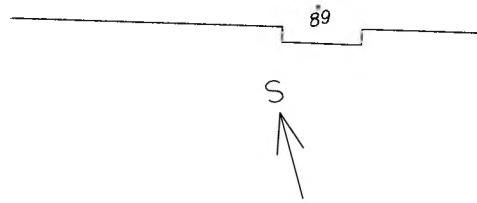


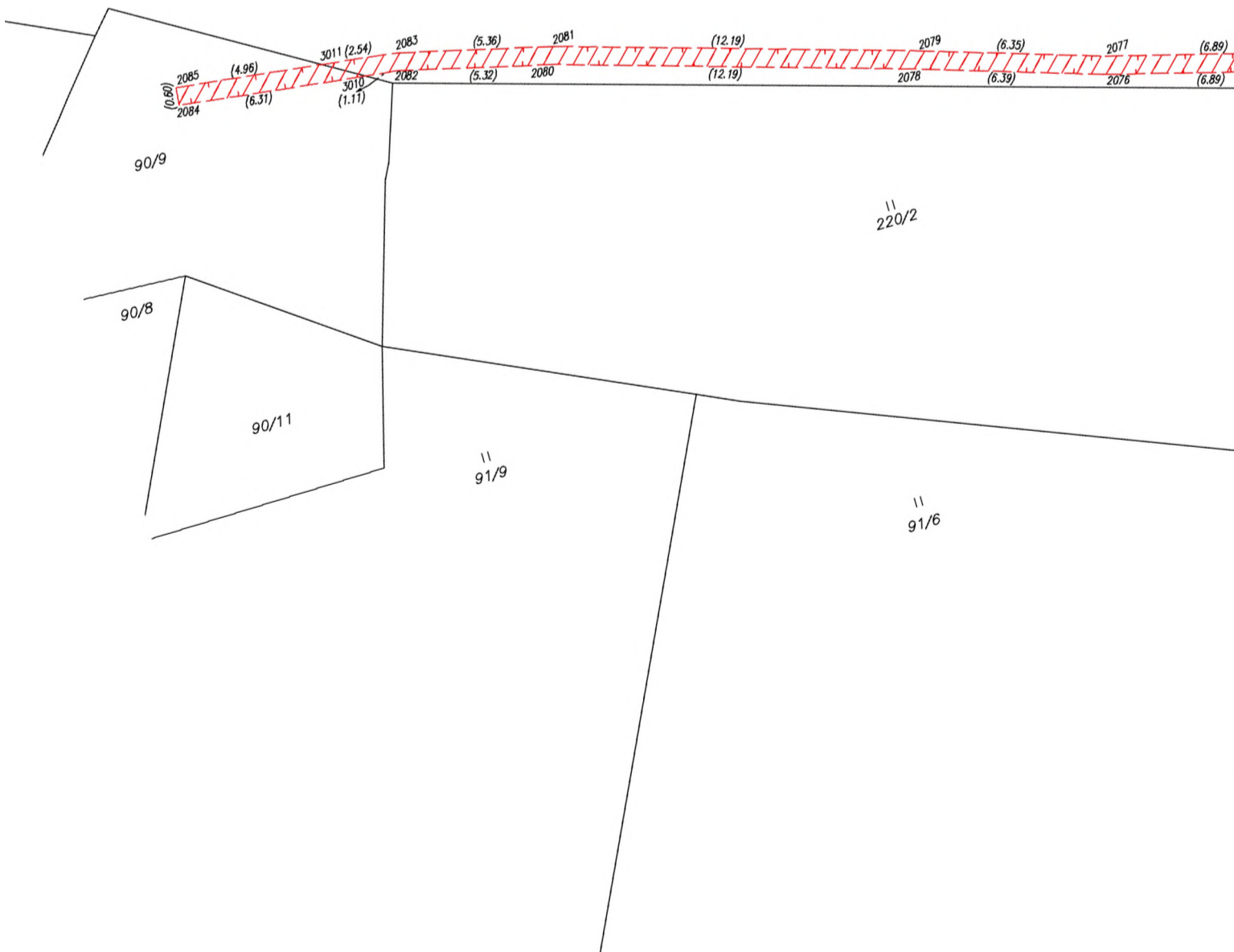
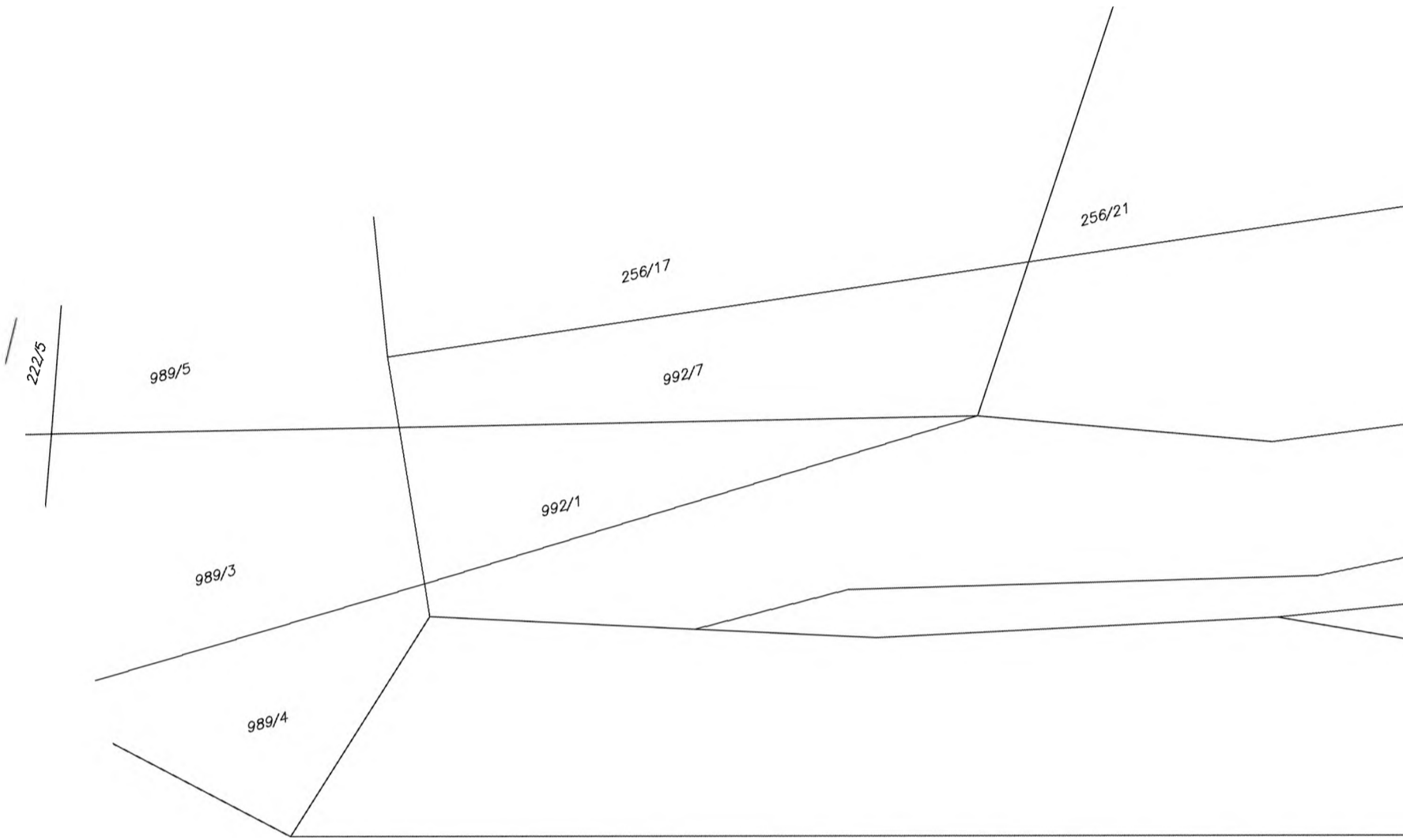
85/2

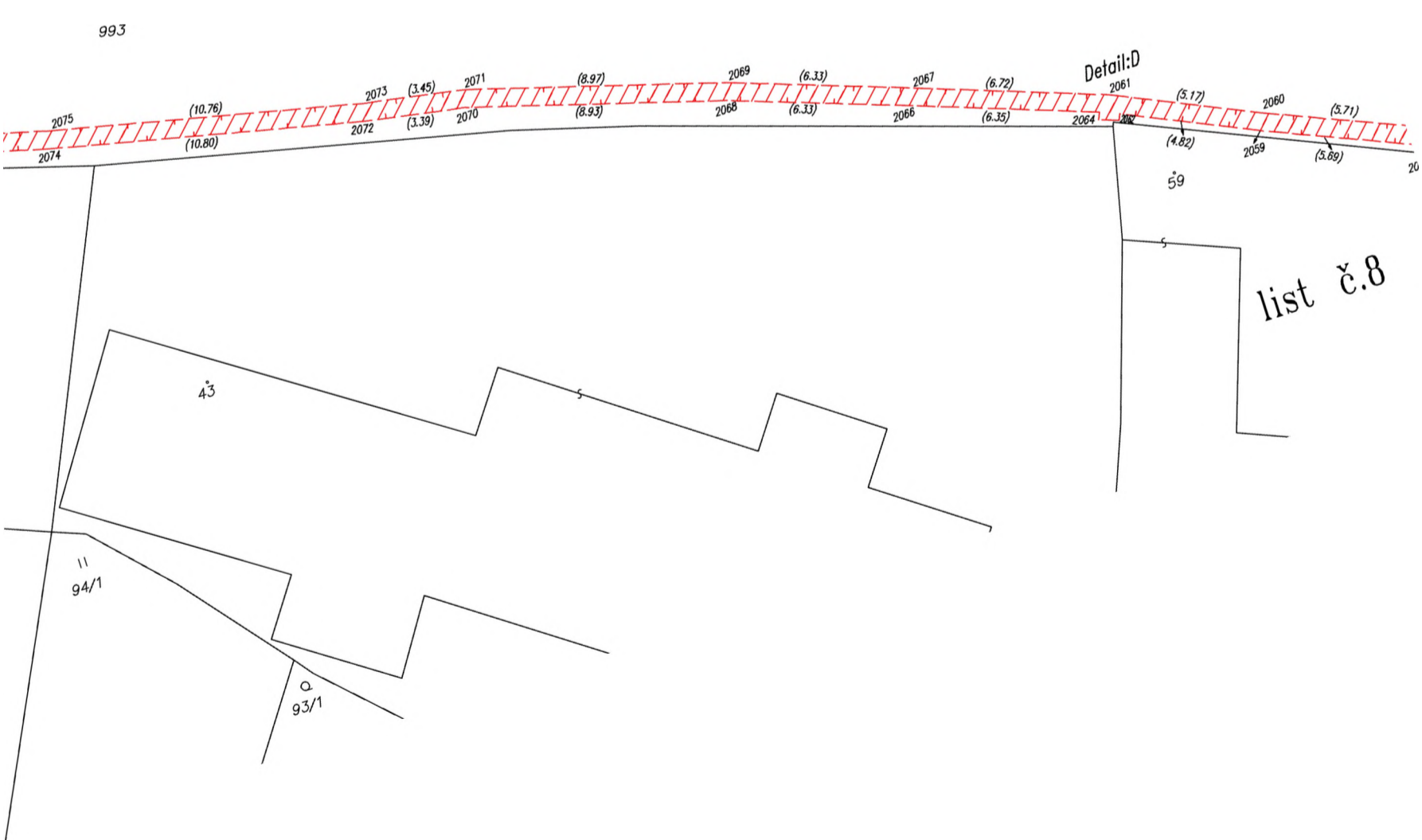
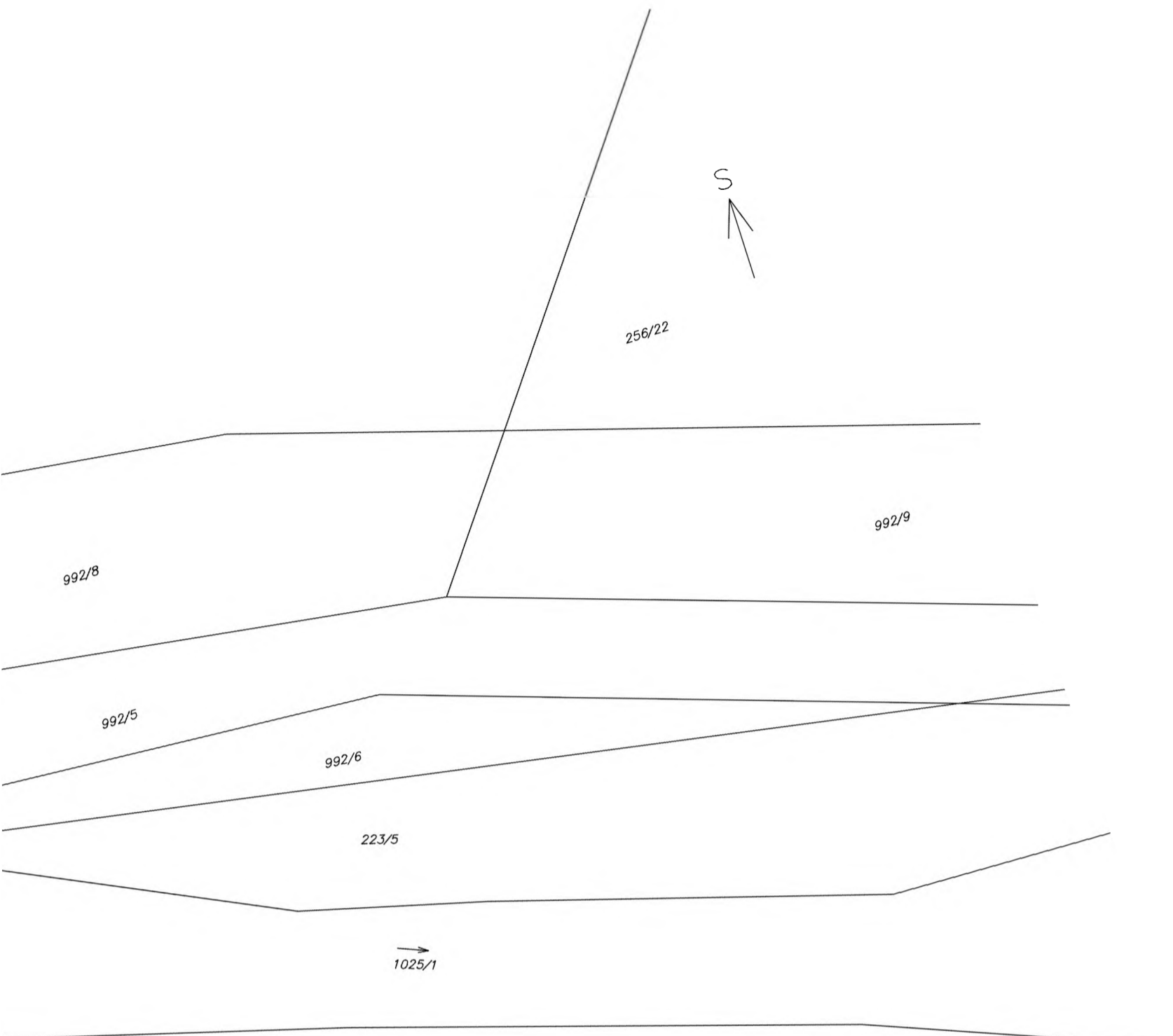
12/2



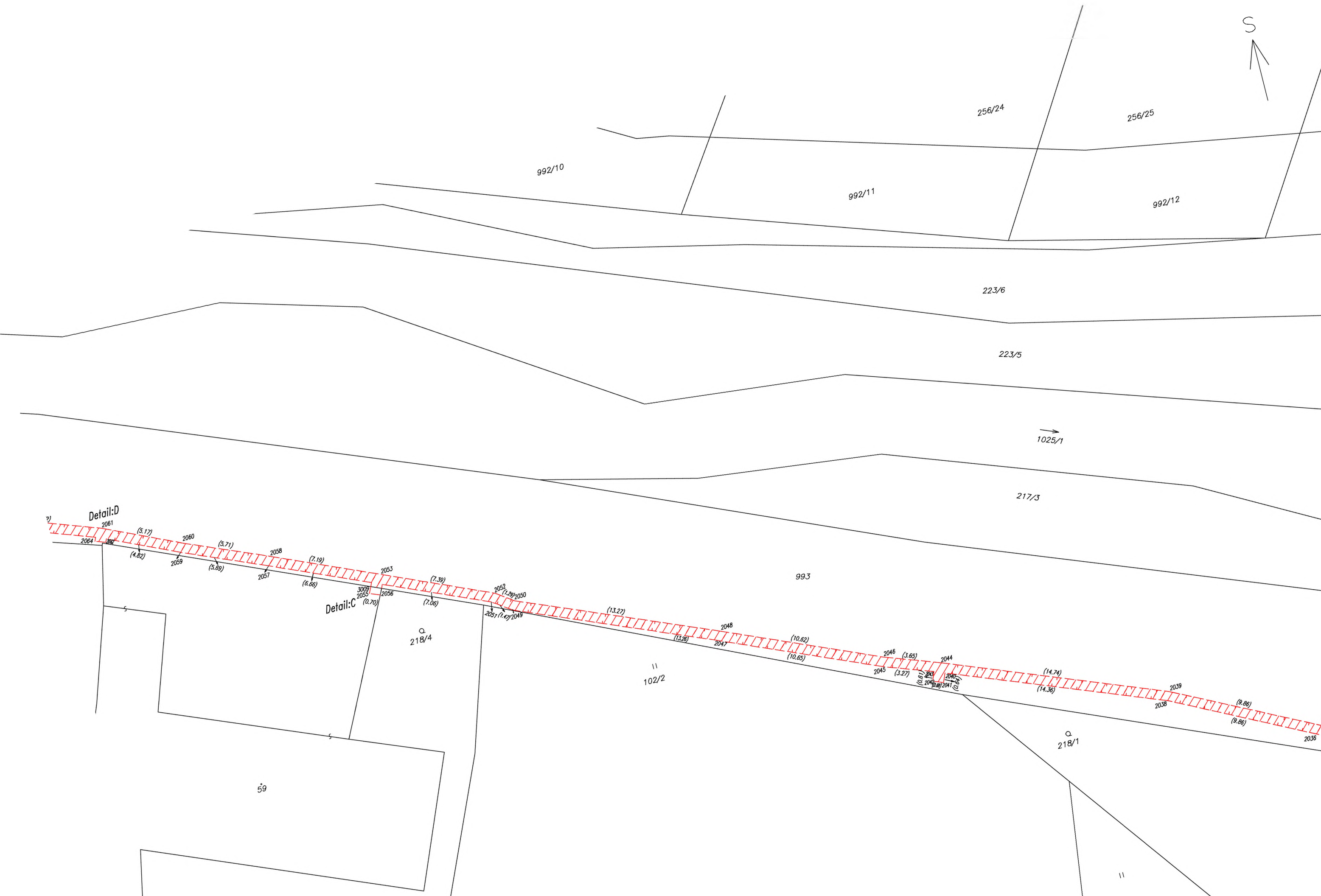












223/4

223/5

1025/1

217/3

217/4

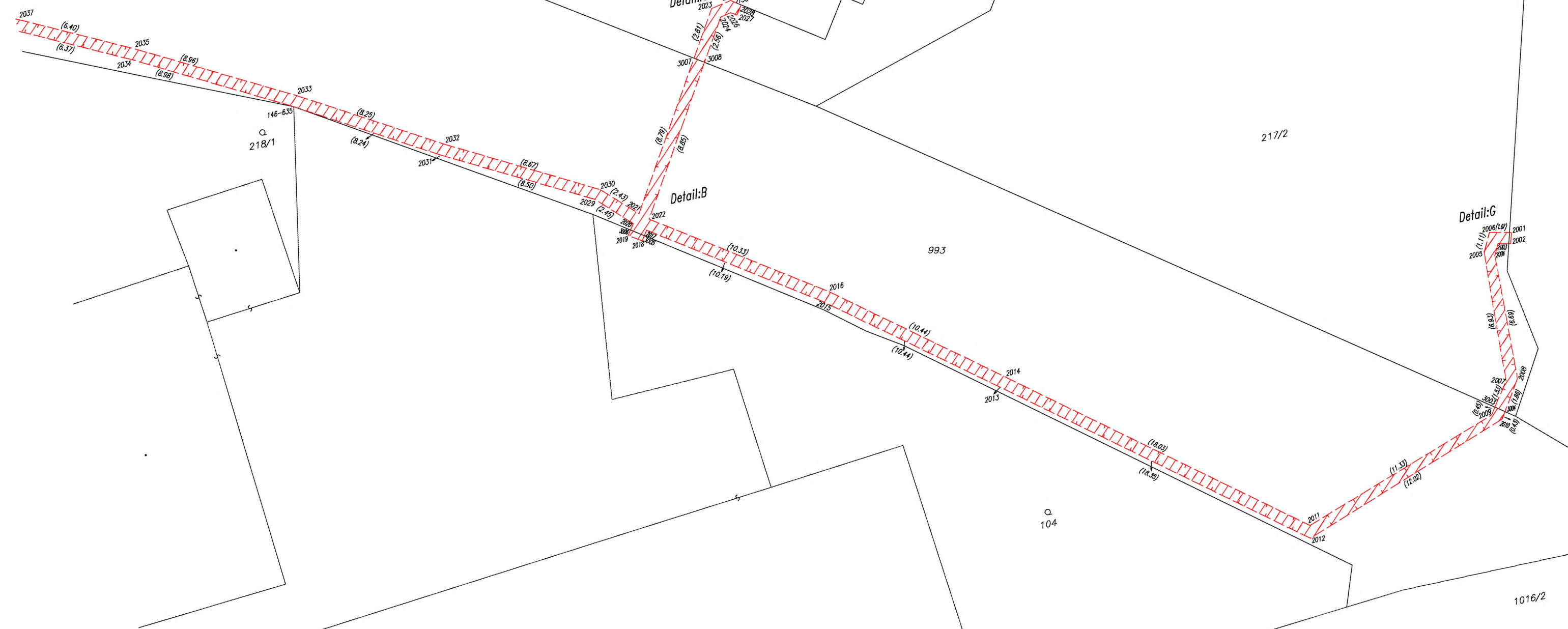
66

217/2

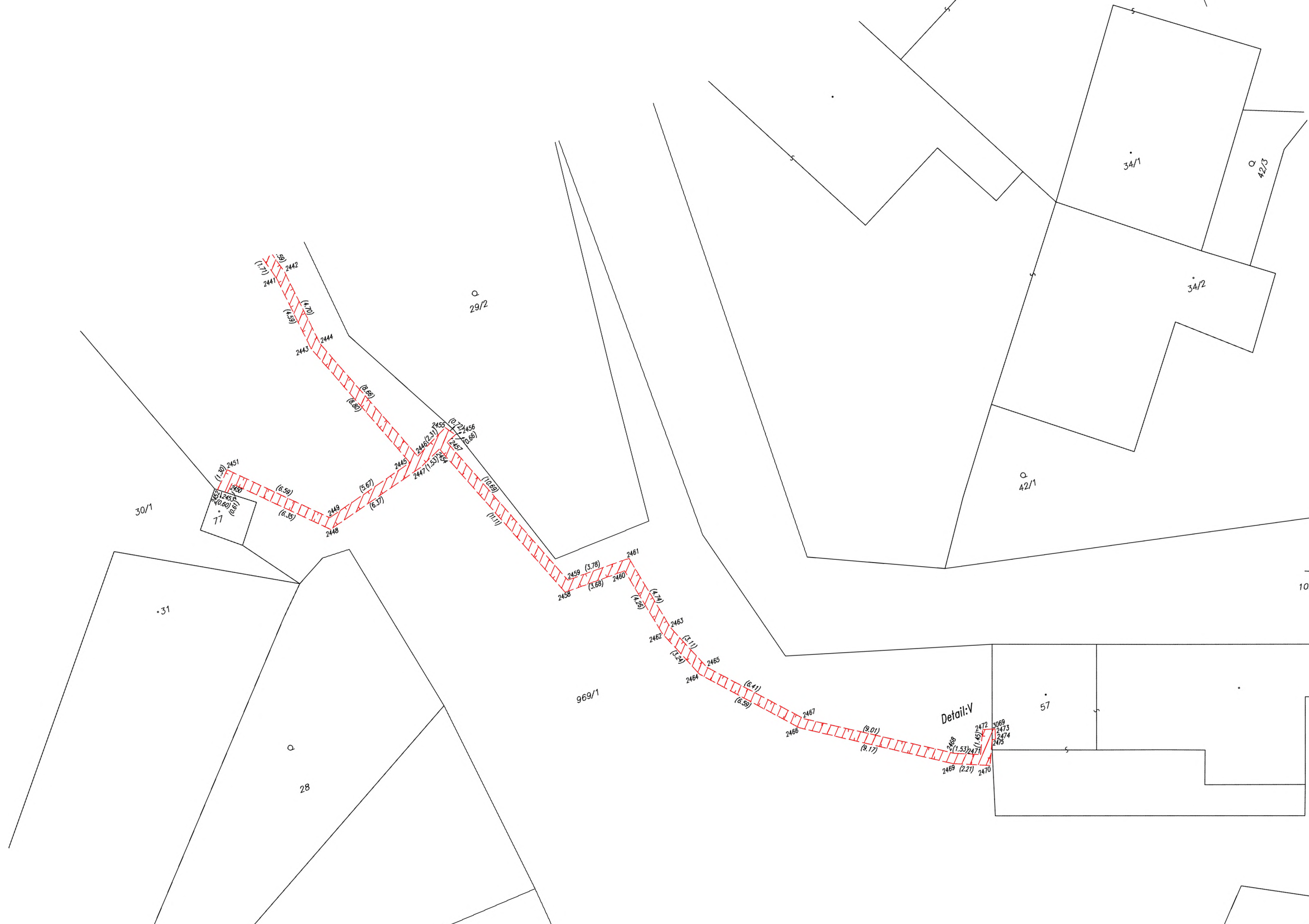
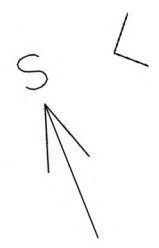
993

Q  
104

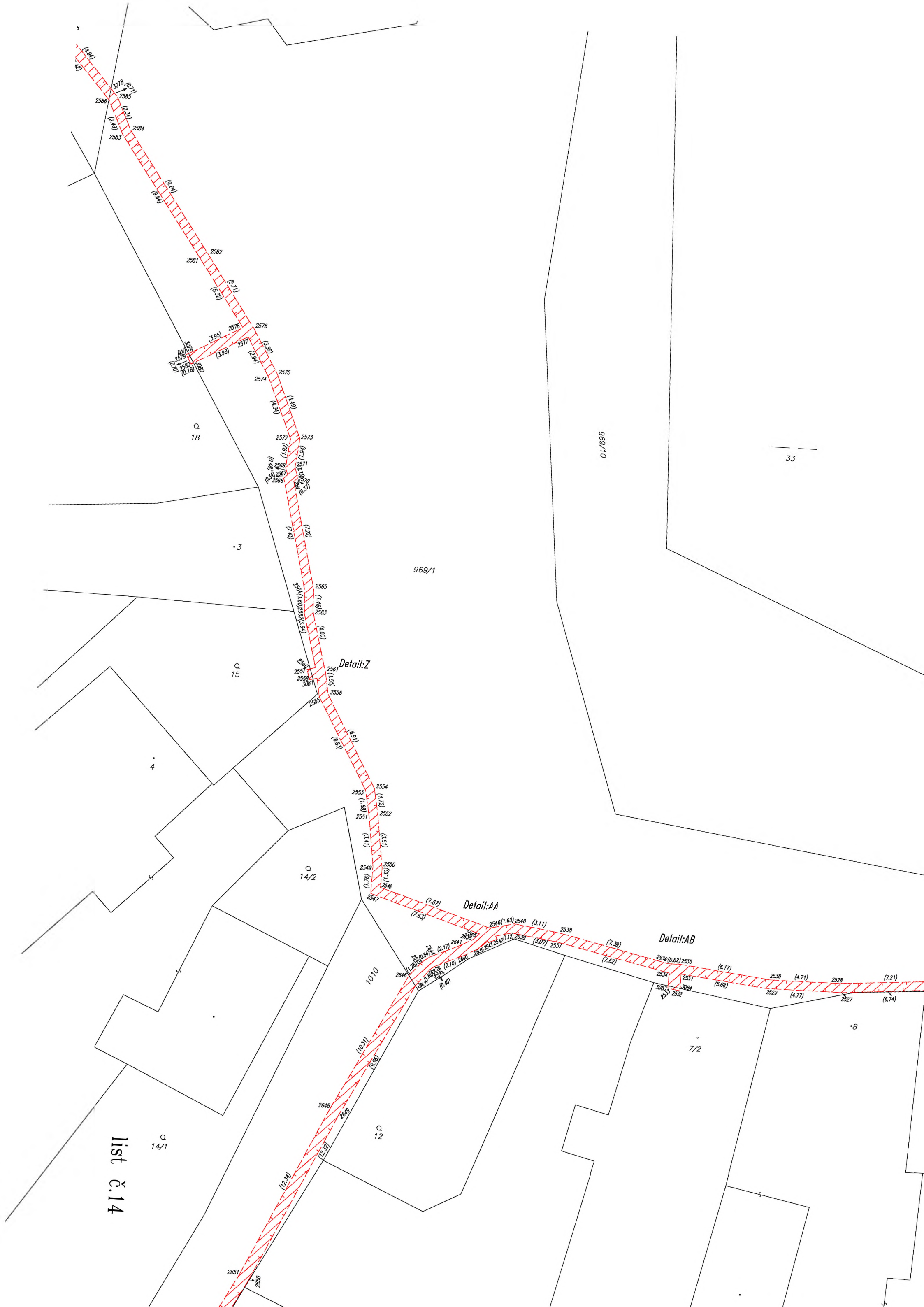
1016/2











list č.14

Detail:Z

Detail:AA

Detail:AB

33

14/1

12

7/2

8

18

15

4

3

969/1

14/2

1010

969/10

2651

2650

2648

2649

2648

2649

2648

2649

2548

2549

2550

2551

2552

2553

2554

2555

2556

2557

2558

2559

2560

2561

2562

2563

2564

2565

2566

2567

2568

2569

2570

2571

2572

2573

2574

2575

2576

2577

2578

2579

2580

2581

2582

2583

2584

2585

2586

2587

2588

2589

2590

2591

2592

2593

2594

2595

2596

2597

2598

2599

2600

2601

2602

2603

2604

2605

2606

2607

2608

2609

2610

2611

2612

2613

2614

2615

2616

2617

2618

2619

2620

2621

2622

2623

2624

2625

2626

2627

2628

2629

2630

2631

2632

2633

2634

2635

2636

2637

2638

2639

2640

2641

2642

2643

2644

2645

2646

2647

2648

2649

2650

2651

2652

2653

2654

2655

2656

2657

2658

2659

2660

2661

2662

2663

2664

2665

2666

2667

2668

2669

2670

2671

2672

2673

2674

2675

2676

2677

2678

2679

2680

2681

2682

2683

2684

2685

2686

2687

2688

2689

2690

2691

2692

2693

2694

2695

2696

2697

2698

2699

2700

2701

2702

2703

2704

2705

2706

2707

2708

2709

2710

2711

2712

2713

2714

2715

2716

2717

2718

2719

2720

2721

2722

2723

2724

2725

2726

2727

2728

2729

2730

2731

2732

2733

2734

2735

2736

2737

2738

2739

2740

2741

2742

2743

2744

2745

2746

2747

2748

2749

2750

2751

2752

2753

2754

2755

2756

2757

2758

2759

2760

2761

2762

2763

2764

2765

2766

2767

2768

2769

2770

2771

2772

2773

2774

2775

2776

2777

2778

2779

2780

2781

2782

2783

2784

2785

2786

2787

2788

2789

2790

2791

2792

2793

2794

2795

2796

2797

2798

2799

2800

2801

2802

2803

2804

2805

2806

2807

2808

2809

2810

2811

2812

2813

2814

2815

2816

2817

2818

2819

2820

2821

2822

2823

2824

2825

2826

2827

2828

2829

2830

2831

2832

2833

2834

2835

2836

2837

2838

2839

2840

2841

2842

2843

2844

2845

2846

2847

2848

2849

2850

2851

2852

2853



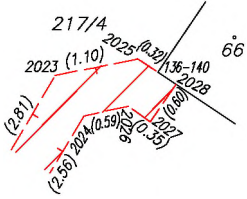




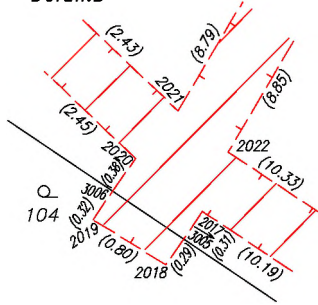




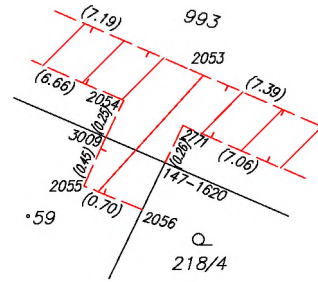
Detail:A



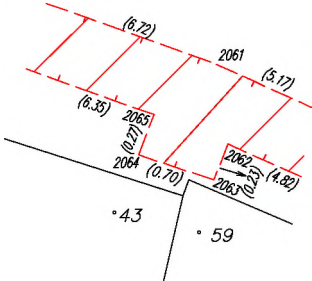
Detail:B



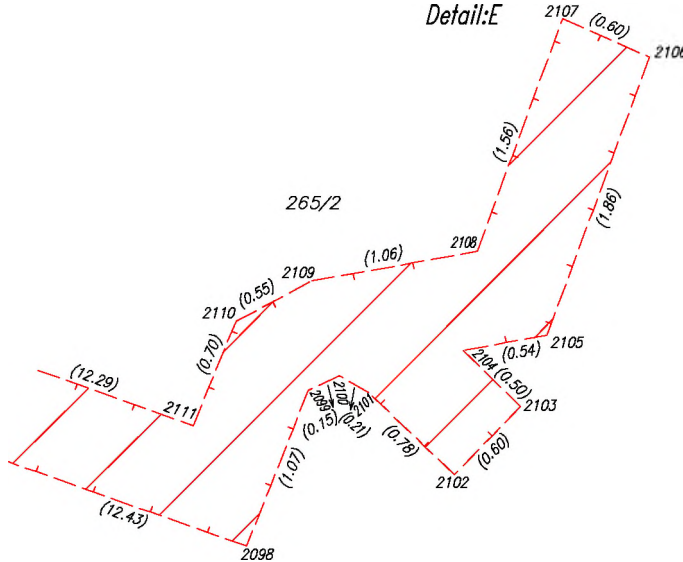
Detail:C



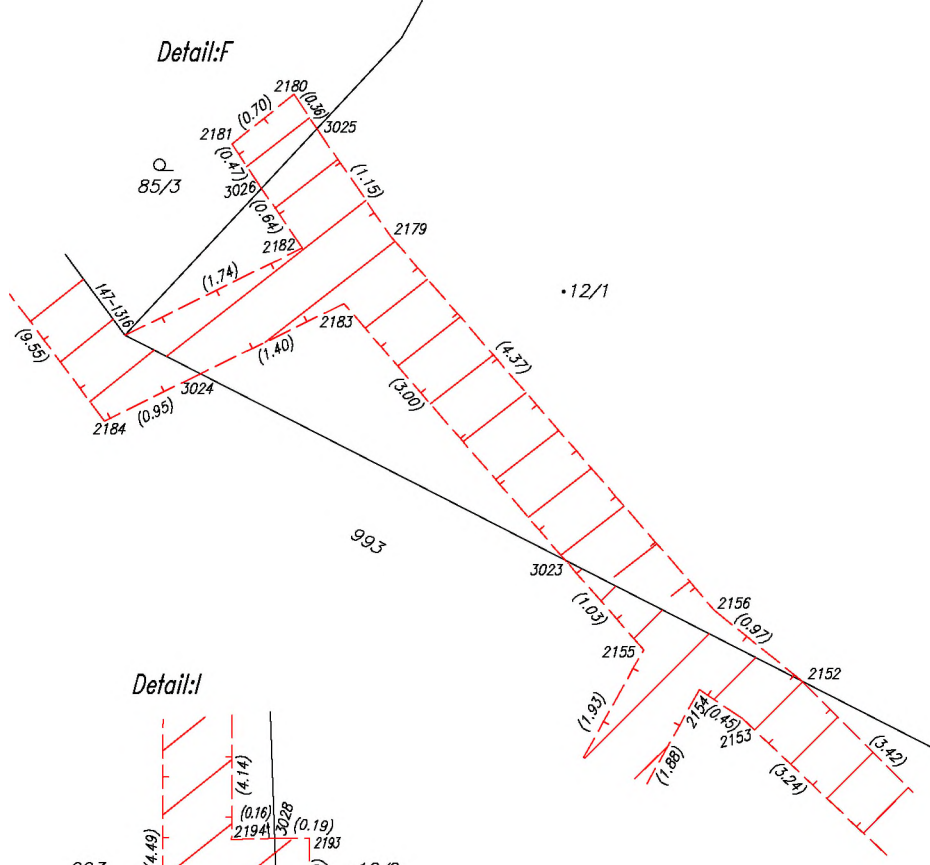
Detail:D



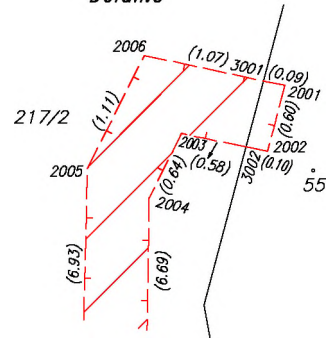
Detail:E



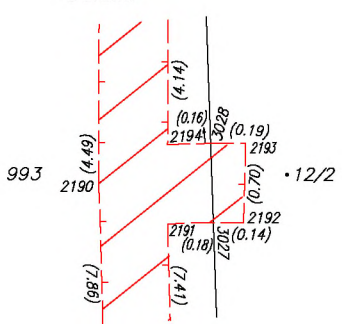
Detail:F



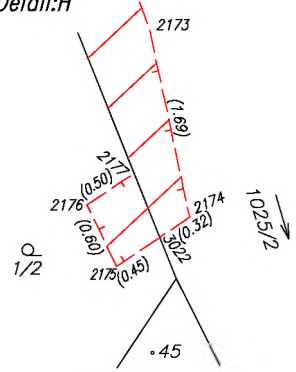
Detail:G

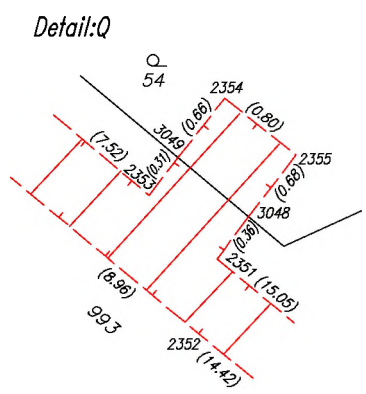
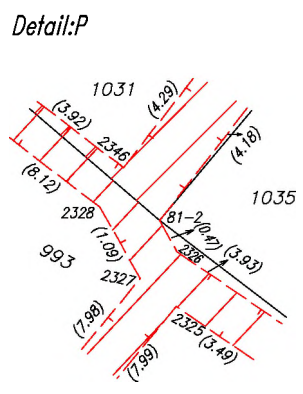
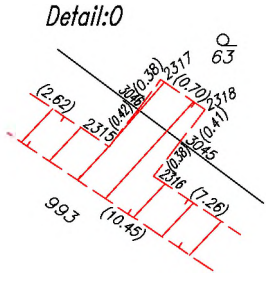
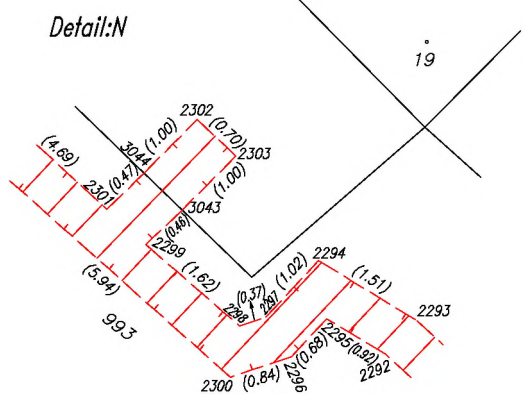
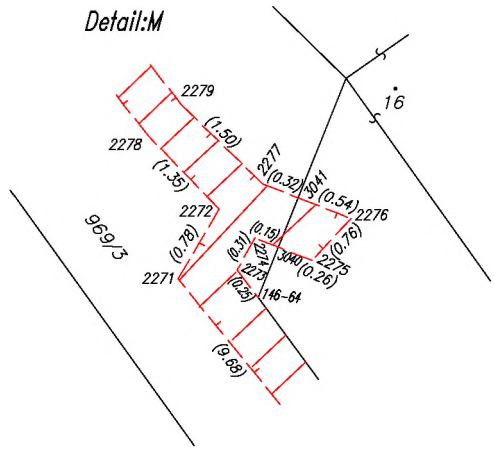
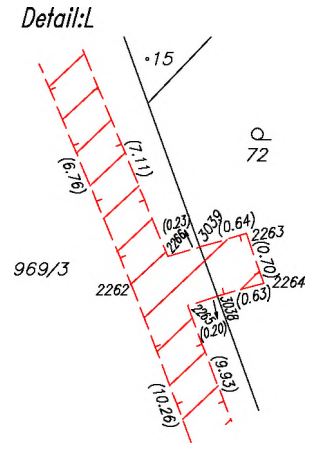
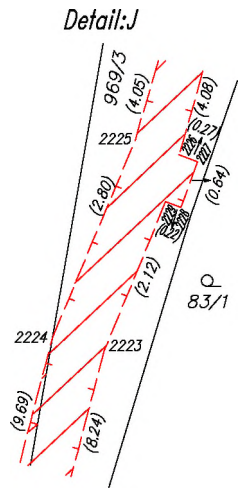
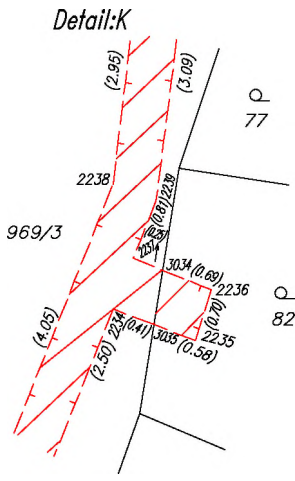


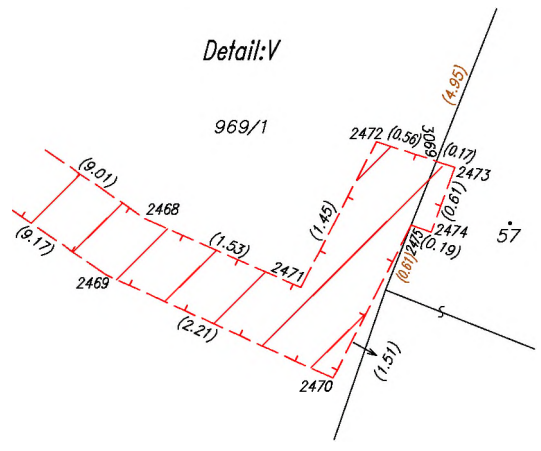
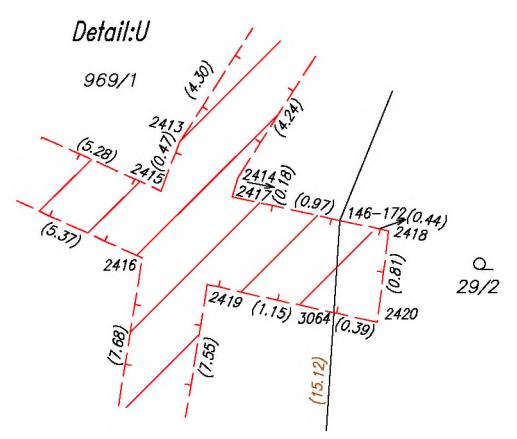
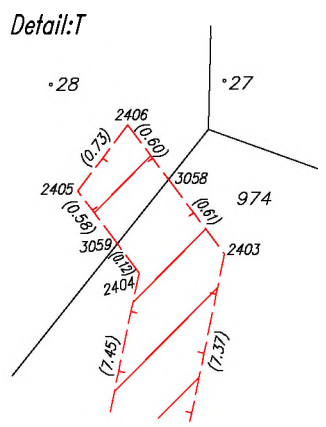
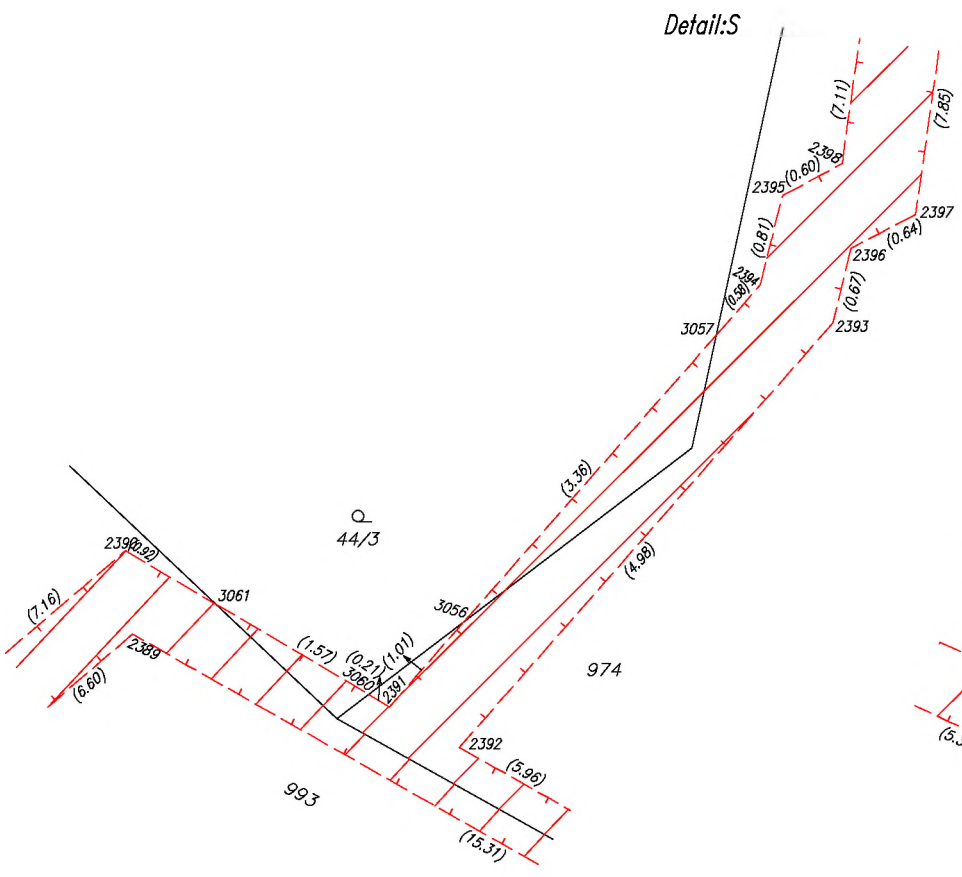
Detail:I



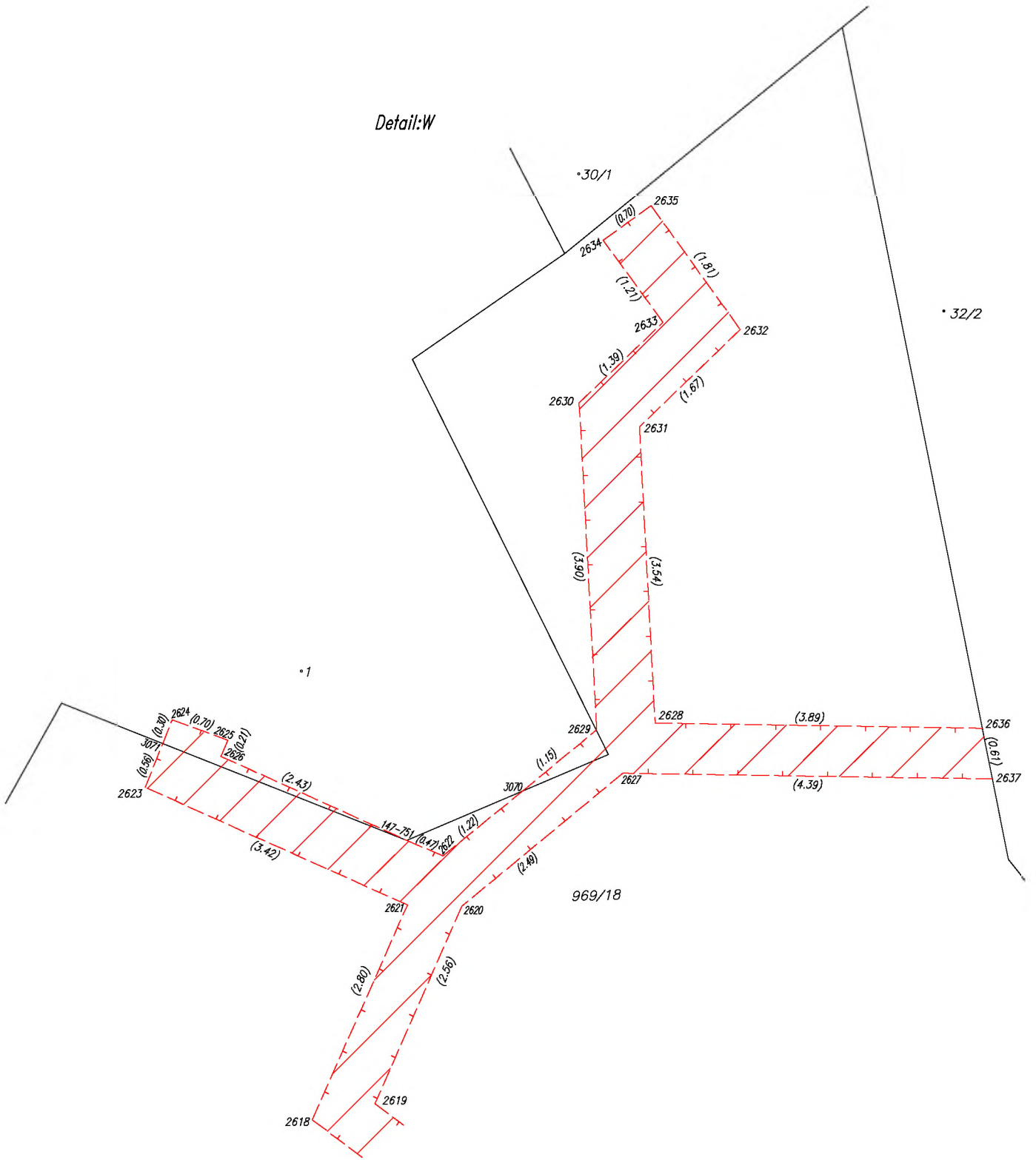
Detail:H



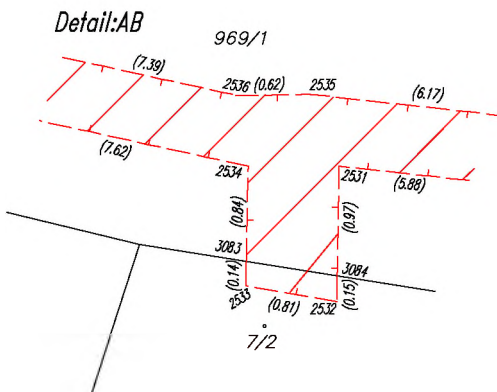




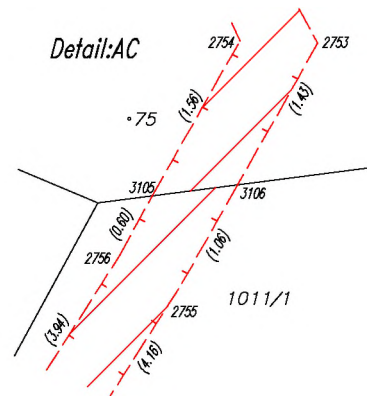
Detail:W



Detail:AB



Detail:AC





## Seznam souřadnic (S–JTSK)

Číslo bodu	Souřadnice pro zpis do KN		
	Y	X	kód kv.
81–2	840102.87	1107209.23	3
81–94	840096.00	1107214.46	3
93–13	840114.09	1107358.01	3
136–140	839727.85	1107503.34	3
146–61	840056.86	1107247.07	3
146–63	840050.10	1107254.43	3
146–64	840042.53	1107262.04	3
146–69	840037.79	1107268.52	3
146–172	840188.75	1107180.40	3
146–635	839752.03	1107504.09	4
147–751	840247.98	1107256.43	7
147–1073	840131.09	1107358.48	7
147–1276	840043.13	1107355.17	7
147–1296	840037.88	1107389.37	7
147–1316	840032.53	1107396.56	7
147–1620	839821.51	1107473.55	7
147–2166	839916.58	1107430.72	7
150–125	839915.47	1107349.29	7
2001	839689.82	1107523.51	3
2002	839689.97	1107524.09	3
2003	839690.64	1107523.95	3
2004	839690.92	1107524.52	3
2005	839691.46	1107524.26	3
2006	839690.96	1107523.27	3
2007	839691.65	1107531.19	3
2008	839691.05	1107531.21	3
2009	839692.77	1107532.82	3
2010	839692.27	1107533.14	3
2011	839703.43	1107536.67	3
2012	839703.53	1107537.35	3
2013	839718.11	1107526.20	3
2014	839717.75	1107525.72	3
2015	839726.42	1107519.88	3
2016	839726.06	1107519.40	3
2017	839734.93	1107514.27	3
2018	839735.27	1107514.77	3
2019	839735.95	1107514.35	3
2020	839735.55	1107513.77	3
2021	839735.15	1107513.33	3
2022	839734.68	1107513.71	3
2023	839729.20	1107503.38	3
2024	839728.82	1107503.92	3
2025	839728.12	1107503.16	3
2026	839728.24	1107503.79	3
2027	839727.95	1107503.99	3
2028	839727.61	1107503.50	3
2029	839737.33	1107512.09	3
2030	839736.91	1107511.65	3
2031	839744.87	1107508.17	3
2032	839744.59	1107507.63	3
2033	839751.76	1107503.55	4
2034	839759.99	1107499.93	3
2035	839759.71	1107499.41	3
2036	839765.74	1107497.19	3
2037	839765.48	1107496.65	3
2038	839774.55	1107492.76	3
2039	839774.29	1107492.22	3
2040	839787.93	1107487.55	3
2041	839788.18	1107488.14	3
2042	839788.82	1107487.87	3
2043	839788.59	1107487.31	3
2044	839788.03	1107486.87	3
2045	839791.67	1107486.20	3
2046	839791.47	1107485.64	3
2047	839801.47	1107482.02	3
2048	839801.23	1107481.46	3
2049	839813.72	1107476.95	3
2050	839813.49	1107476.39	3
2051	839814.92	1107476.10	3
2052	839814.54	1107475.64	3
2053	839821.32	1107472.69	3
2054	839822.05	1107473.04	3
2055	839822.35	1107473.68	3
2056	839821.70	1107473.94	7
2057	839828.16	1107470.40	3
2058	839827.92	1107469.84	3
2059	839833.40	1107468.19	3
2060	839833.18	1107467.63	3
2061	839837.89	1107465.49	3
2062	839837.79	1107466.19	3

## Seznam souřadnic (S–JTSK)

Číslo bodu	Souřadnice pro zpis do KN		
	Y	X	kód kv.
2063	839837.88	1107466.40	3
2064	839838.54	1107466.18	3
2065	839838.44	1107465.93	3
2066	839844.42	1107463.80	3
2067	839844.22	1107463.24	3
2068	839850.40	1107461.71	3
2069	839850.20	1107461.15	3
2070	839858.98	1107459.24	3
2071	839858.82	1107458.66	3
2072	839862.32	1107458.66	3
2073	839862.22	1107458.06	3
2074	839872.86	1107456.30	3
2075	839872.72	1107455.72	3
2076	839879.52	1107454.54	3
2077	839879.38	1107453.96	3
2078	839885.62	1107452.63	3
2079	839885.44	1107452.05	3
2080	839897.30	1107449.15	3
2081	839897.12	1107448.57	3
2082	839902.47	1107447.90	3
2083	839902.33	1107447.32	3
2084	839909.84	1107447.02	3
2085	839909.77	1107446.42	3
2086	839916.10	1107349.61	3
2087	839914.79	1107349.71	3
2088	839915.78	1107349.10	3
2089	839914.65	1107350.49	3
2090	839912.71	1107348.10	3
2091	839912.89	1107347.38	3
2092	839907.92	1107350.08	8
2093	839907.47	1107349.60	8
2094	839903.67	1107350.97	7
2095	839903.46	1107351.68	3
2096	839901.38	1107348.00	3
2097	839901.17	1107348.71	3
2098	839889.45	1107352.85	3
2099	839889.04	1107351.86	3
2100	839888.91	1107351.79	3
2101	839888.71	1107351.85	3
2102	839888.15	1107352.40	3
2103	839887.73	1107351.97	3
2104	839888.09	1107351.62	3
2105	839887.56	1107351.53	3
2106	839886.92	1107349.78	3
2107	839887.46	1107349.54	3
2108	839888.00	1107351.00	3
2109	839889.04	1107351.18	3
2110	839889.52	1107351.44	3
2111	839889.79	1107352.09	3
2112	839917.21	1107430.40	7
2113	839917.66	1107431.56	3
2114	839917.23	1107432.39	3
2115	839922.65	1107430.97	3
2116	839922.51	1107430.29	3
2117	839922.46	1107429.85	3
2118	839923.15	1107429.71	3
2119	839923.31	1107431.29	3
2120	839923.82	1107431.42	3
2121	839923.64	1107432.00	3
2122	839923.06	1107431.80	3
2123	839922.72	1107431.44	3
2124	839935.08	1107428.63	3
2125	839934.90	1107428.05	3
2126	839940.32	1107427.15	3
2127	839940.90	1107427.00	3
2128	839942.95	1107436.10	3
2129	839942.37	1107436.26	3
2130	839941.04	1107426.34	3
2131	839941.82	1107426.13	3
2132	839941.13	1107423.98	3
2133	839940.35	1107424.18	3
2134	839955.72	1107423.07	3
2135	839955.56	1107422.49	3
2136	839973.28	1107418.23	3
2137	839973.12	1107417.65	3
2138	839976.09	1107417.57	3
2139	839975.95	1107416.99	3
2140	839999.76	1107411.47	3
2141	839999.62	1107410.89	3
2142	840006.41	1107409.62	3
2143	840006.25	1107409.04	3



## Seznam souřadnic (S–JTSK)

## Seznam souřadnic (S–JTSK)

Číslo bodu	Souřadnice pro zápis do KN		
	Y	X	kód kv.
2144	840016.78	1107406.40	3
2145	840016.60	1107405.82	3
2146	840020.51	1107405.14	3
2147	840020.31	1107404.58	3
2148	840024.47	1107403.35	3
2149	840023.95	1107402.93	3
2150	840024.74	1107402.16	3
2151	840024.16	1107402.02	3
2152	840026.57	1107399.60	7
2153	840027.09	1107399.93	3
2154	840027.47	1107399.68	3
2155	840027.96	1107399.33	3
2156	840027.33	1107398.99	3
2157	840028.90	1107401.02	3
2158	840028.38	1107401.32	3
2159	840032.54	1107406.98	3
2160	840032.02	1107407.30	3
2161	840033.09	1107408.21	3
2162	840032.52	1107408.41	3
2163	840031.15	1107408.90	3
2164	840031.43	1107409.43	3
2165	840036.43	1107407.68	3
2166	840036.09	1107407.16	3
2167	840039.95	1107403.63	3
2168	840039.85	1107402.83	3
2169	840045.39	1107407.34	3
2170	840046.09	1107407.10	3
2171	840044.71	1107411.67	3
2172	840044.13	1107411.49	3
2173	840043.14	1107414.12	3
2174	840042.79	1107415.77	3
2175	840043.43	1107416.20	3
2176	840043.70	1107415.65	3
2177	840043.28	1107415.38	4
2178	840044.18	1107413.14	4
2179	840030.19	1107395.69	3
2180	840031.04	1107394.44	3
2181	840031.59	1107394.88	3
2182	840030.97	1107395.80	3
2183	840030.60	1107396.28	3
2184	840032.71	1107397.32	3
2185	840038.42	1107389.66	3
2186	840040.93	1107382.50	3
2187	840040.37	1107382.30	3
2188	840042.93	1107367.42	3
2189	840043.53	1107367.52	3
2190	840043.75	1107359.66	3
2191	840043.14	1107360.01	3
2192	840042.82	1107360.02	3
2193	840042.80	1107359.32	3
2194	840043.15	1107359.31	3
2195	840043.73	1107355.17	3
2196	840041.43	1107342.88	3
2197	840042.07	1107343.07	3
2198	840042.01	1107342.47	3
2199	840050.81	1107341.47	7
2200	840050.76	1107340.87	7
2201	840055.54	1107341.03	3
2202	840055.48	1107340.43	3
2203	840057.66	1107340.07	3
2204	840057.42	1107339.53	3
2205	840060.48	1107338.26	3
2206	840060.16	1107337.76	3
2207	840062.33	1107336.91	3
2208	840063.28	1107338.16	3
2209	840063.86	1107337.76	3
2210	840062.90	1107336.50	3
2211	840064.90	1107335.04	3
2212	840064.54	1107334.56	3
2213	840067.92	1107333.02	3
2214	840067.16	1107332.80	3
2215	840067.14	1107331.31	3
2216	840066.64	1107331.67	3
2217	840066.20	1107330.44	3
2218	840065.80	1107330.88	3
2219	840064.62	1107329.61	3
2220	840063.84	1107329.91	3
2221	840041.50	1107340.04	3
2222	840040.82	1107340.20	3
2223	840038.38	1107330.84	3

Číslo bodu	Souřadnice pro zápis do KN		
	Y	X	kód kv.
2224	840039.06	1107330.66	7
2225	840037.97	1107328.08	3
2226	840037.40	1107328.27	3
2227	840037.15	1107328.36	3
2228	840037.37	1107328.96	3
2229	840037.57	1107328.88	3
2230	840036.86	1107324.19	3
2231	840036.28	1107324.35	3
2232	840035.25	1107319.05	3
2233	840034.67	1107319.23	3
2234	840033.75	1107316.91	3
2235	840032.83	1107317.27	3
2236	840032.62	1107316.60	3
2237	840033.49	1107316.26	3
2238	840033.75	1107315.29	3
2239	840033.19	1107315.51	3
2240	840032.80	1107312.44	3
2241	840033.40	1107312.36	3
2242	840032.15	1107309.88	3
2243	840032.65	1107309.40	3
2244	840027.59	1107308.61	3
2245	840027.75	1107308.03	3
2246	840025.00	1107308.14	3
2247	840024.88	1107308.78	3
2248	840024.19	1107308.66	3
2249	840024.36	1107307.73	3
2250	840025.03	1107307.53	3
2251	840025.28	1107304.08	3
2252	840024.68	1107304.04	3
2253	840025.74	1107300.49	3
2254	840025.10	1107300.74	3
2255	840025.22	1107300.05	3
2256	840024.37	1107299.91	3
2257	840024.20	1107300.59	3
2258	840027.03	1107291.85	3
2259	840027.61	1107291.97	3
2260	840029.27	1107284.52	3
2261	840029.84	1107284.69	3
2262	840033.47	1107275.09	3
2263	840032.21	1107274.34	3
2264	840031.98	1107275.00	3
2265	840032.78	1107275.23	3
2266	840033.04	1107274.58	3
2267	840036.05	1107268.84	3
2268	840035.75	1107268.01	3
2269	840037.51	1107268.90	3
2270	840037.69	1107269.67	3
2271	840043.41	1107261.86	3
2272	840042.98	1107261.21	3
2273	840042.68	1107261.84	3
2274	840042.51	1107261.58	3
2275	840042.13	1107261.74	3
2276	840041.61	1107261.19	3
2277	840042.41	1107260.87	3
2278	840043.92	1107260.24	3
2279	840043.48	1107259.82	3
2280	840047.87	1107255.18	3
2281	840047.39	1107254.82	3
2282	840048.55	1107254.18	3
2283	840050.21	1107255.20	3
2284	840048.38	1107253.37	7
2285	840056.21	1107247.77	3
2286	840055.74	1107248.29	3
2287	840055.87	1107247.48	3
2288	840055.40	1107247.99	3
2289	840057.45	1107247.31	3
2290	840056.92	1107245.31	3
2291	840057.52	1107245.57	3
2292	840060.16	1107243.10	3
2293	840059.76	1107242.66	3
2294	840061.05	1107241.87	3
2295	840060.95	1107242.63	3
2296	840061.41	1107243.13	3
2297	840061.75	1107242.61	3
2298	840062.10	1107242.72	3
2299	840063.33	1107241.66	3
2300	840062.21	1107243.40	3
2301	840063.85	1107241.18	3
2302	840062.81	1107240.14	3
2303	840062.30	1107240.62	3

## Seznam souřadnic (S–JTSK)

## Seznam souřadnic (S–JTSK)

Číslo bodu	Souřadnice pro zápis do KN			Číslo bodu	Souřadnice pro zápis do KN		
	Y	X	kód kv.		Y	X	kód kv.
2304	840066.65	1107239.45	3	2384	840149.83	1107175.38	3
2305	840067.10	1107239.04	3	2385	840153.10	1107173.29	3
2306	840073.89	1107244.33	3	2386	840153.34	1107173.83	3
2307	840073.53	1107244.81	3	2387	840159.75	1107170.05	3
2308	840076.71	1107248.31	3	2388	840160.01	1107170.59	3
2309	840076.23	1107248.65	3	2389	840173.33	1107163.04	3
2310	840078.69	1107249.78	3	2390	840173.39	1107162.30	3
2311	840078.13	1107250.11	3	2391	840171.07	1107163.68	3
2312	840067.73	1107238.47	3	2392	840170.45	1107164.04	3
2313	840067.33	1107238.03	3	2393	840167.16	1107160.30	3
2314	840075.27	1107230.58	3	2394	840167.80	1107159.96	3
2315	840081.43	1107225.72	3	2395	840167.60	1107159.17	3
2316	840080.85	1107226.11	3	2396	840167.00	1107159.65	3
2317	840080.94	1107225.09	3	2397	840166.43	1107159.35	3
2318	840080.36	1107225.49	3	2398	840167.07	1107158.89	3
2319	840083.94	1107224.75	3	2399	840165.35	1107151.57	3
2320	840083.60	1107224.25	3	2400	840165.65	1107151.30	3
2321	840088.00	1107221.29	3	2401	840166.09	1107151.85	3
2322	840087.62	1107220.83	3	2402	840166.41	1107151.56	3
2323	840099.78	1107212.35	3	2403	840164.15	1107144.08	3
2324	840099.40	1107211.87	3	2404	840164.91	1107144.26	3
2325	840102.65	1107210.36	3	2405	840165.33	1107143.70	3
2326	840102.64	1107209.64	3	2406	840164.89	1107143.12	3
2327	840103.13	1107210.00	3	2407	840181.77	1107169.49	3
2328	840103.66	1107209.05	3	2408	840181.39	1107169.95	3
2329	840110.27	1107218.68	3	2409	840186.37	1107175.19	3
2330	840109.81	1107219.06	3	2410	840186.81	1107174.77	3
2331	840113.38	1107224.79	3	2411	840187.84	1107176.07	3
2332	840112.75	1107224.88	3	2412	840187.36	1107176.45	3
2333	840113.42	1107225.58	3	2413	840190.15	1107179.70	3
2334	840112.44	1107225.44	3	2414	840189.65	1107180.02	3
2335	840112.30	1107224.82	3	2415	840190.32	1107180.14	3
2336	840107.38	1107228.86	3	2416	840190.49	1107180.73	3
2337	840107.04	1107228.36	3	2417	840189.70	1107180.19	3
2338	840104.72	1107230.20	3	2418	840188.32	1107180.49	3
2339	840103.92	1107229.92	3	2419	840189.92	1107180.96	3
2340	840105.61	1107232.04	3	2420	840188.42	1107181.29	3
2341	840105.07	1107232.30	3	2421	840195.38	1107178.52	7
2342	840107.40	1107236.36	3	2422	840195.13	1107177.97	7
2343	840106.82	1107236.53	3	2423	840197.11	1107178.00	3
2344	840119.11	1107222.22	3	2424	840197.09	1107177.38	3
2345	840118.74	1107221.62	3	2425	840199.77	1107178.65	3
2346	840103.34	1107208.53	3	2426	840199.55	1107177.97	3
2347	840100.31	1107205.93	3	2427	840204.89	1107172.33	3
2348	840100.71	1107205.14	3	2428	840204.43	1107171.95	3
2349	840109.73	1107203.61	3	2429	840210.53	1107164.15	3
2350	840110.09	1107204.09	3	2430	840210.03	1107163.81	3
2351	840121.35	1107194.05	3	2431	840212.80	1107158.95	3
2352	840121.23	1107194.93	3	2432	840212.24	1107158.71	3
2353	840121.94	1107193.49	3	2433	840212.88	1107156.33	3
2354	840121.34	1107192.72	3	2434	840213.43	1107156.62	3
2355	840120.71	1107193.22	3	2435	840191.73	1107188.31	3
2356	840128.13	1107189.22	3	2436	840191.13	1107188.41	3
2357	840128.86	1107188.75	3	2437	840192.46	1107193.89	3
2358	840129.68	1107187.73	3	2438	840191.86	1107193.97	3
2359	840127.71	1107188.66	3	2439	840192.29	1107197.81	3
2360	840128.38	1107188.23	3	2440	840191.69	1107197.79	3
2361	840129.20	1107187.23	3	2441	840191.91	1107199.48	3
2362	840133.58	1107184.68	3	2442	840191.33	1107199.34	3
2363	840134.03	1107184.28	3	2443	840191.54	1107204.06	3
2364	840138.79	1107189.39	3	2444	840190.94	1107204.02	3
2365	840139.19	1107188.95	3	2445	840188.65	1107212.37	3
2366	840142.55	1107191.73	3	2446	840188.08	1107212.19	3
2367	840142.87	1107191.21	3	2447	840188.17	1107212.88	3
2368	840144.22	1107192.86	3	2448	840194.38	1107214.29	3
2369	840144.51	1107192.33	3	2449	840194.18	1107213.63	3
2370	840135.26	1107183.32	3	2450	840198.74	1107209.67	3
2371	840134.88	1107182.86	3	2451	840198.70	1107208.83	3
2372	840140.51	1107178.70	3	2452	840199.66	1107209.70	7
2373	840140.71	1107179.30	3	2453	840199.19	1107210.08	7
2374	840141.70	1107179.27	3	2454	840186.76	1107212.28	3
2375	840141.35	1107178.68	3	2455	840185.97	1107211.24	3
2376	840142.15	1107178.39	3	2456	840185.58	1107211.84	3
2377	840142.33	1107177.70	3	2457	840186.19	1107212.09	3
2378	840141.57	1107177.82	3	2458	840183.03	1107222.74	3
2379	840141.60	1107176.57	3	2459	840182.61	1107222.16	3
2380	840141.14	1107177.15	3	2460	840179.35	1107222.87	3
2381	840140.66	1107176.98	3	2461	840178.83	1107222.29	3
2382	840140.76	1107176.28	3	2462	840178.65	1107227.07	3
2383	840149.57	1107174.84	3	2463	840178.05	1107226.97	3

## Seznam souřadnic (S–JTSK)

Číslo bodu	Souřadnice pro zdpis do KN		
	Y	X	kód kv.
2464	840177.51	1107230.10	3
2465	840176.95	1107229.88	3
2466	840173.26	1107235.14	3
2467	840172.80	1107234.76	3
2468	840165.39	1107239.88	3
2469	840165.73	1107240.38	3
2470	840163.72	1107241.29	3
2471	840164.00	1107240.51	3
2472	840163.35	1107239.21	3
2473	840162.66	1107239.43	3
2474	840162.87	1107240.00	3
2475	840163.05	1107239.94	3
2476	840071.19	1107304.58	3
2477	840070.51	1107304.40	3
2478	840070.89	1107305.47	3
2479	840070.21	1107305.33	3
2480	840070.34	1107311.03	3
2481	840071.20	1107311.19	3
2482	840071.06	1107311.88	3
2483	840070.24	1107311.73	3
2484	840069.61	1107311.27	3
2485	840069.96	1107313.17	3
2486	840069.28	1107312.97	3
2487	840067.84	1107318.03	3
2488	840067.18	1107317.79	3
2489	840065.42	1107323.25	3
2490	840066.26	1107322.91	3
2491	840067.06	1107324.09	3
2492	840066.51	1107323.85	3
2493	840085.82	1107334.69	3
2494	840086.40	1107334.37	3
2495	840086.19	1107340.08	3
2496	840086.77	1107339.86	3
2497	840087.99	1107342.43	3
2498	840088.47	1107342.07	3
2499	840090.48	1107344.31	3
2500	840090.84	1107343.83	3
2501	840092.43	1107345.04	3
2502	840092.63	1107344.48	3
2503	840096.96	1107348.10	3
2504	840097.44	1107347.70	3
2505	840098.54	1107351.93	3
2506	840099.04	1107351.55	3
2507	840106.58	1107357.84	3
2508	840106.78	1107357.24	3
2509	840114.08	1107358.44	3
2510	840114.78	1107358.46	3
2511	840114.79	1107358.03	7
2512	840114.57	1107357.42	3
2513	840126.71	1107357.59	3
2514	840126.70	1107358.19	3
2515	840131.14	1107357.88	3
2516	840144.32	1107359.63	7
2517	840144.29	1107359.03	3
2518	840146.22	1107359.26	3
2519	840146.28	1107358.64	3
2520	840147.45	1107359.72	3
2521	840147.67	1107359.16	3
2522	840152.12	1107360.00	3
2523	840151.70	1107360.54	7
2524	840152.52	1107360.64	7
2525	840152.63	1107361.42	3
2526	840151.81	1107361.31	3
2527	840159.24	1107361.20	3
2528	840159.30	1107360.60	3
2529	840164.01	1107361.24	3
2530	840164.01	1107360.64	3
2531	840169.86	1107360.60	3
2532	840169.87	1107361.72	3
2533	840170.67	1107361.58	3
2534	840170.65	1107360.60	3
2535	840170.14	1107359.97	3
2536	840170.76	1107359.98	3
2537	840178.10	1107358.99	3
2538	840177.98	1107358.41	3
2539	840181.14	1107358.56	3
2540	840181.06	1107357.96	3
2541	840182.22	1107358.84	3
2542	840182.13	1107359.05	3
2543	840182.67	1107359.30	3

## Seznam souřadnic (S–JTSK)

Číslo bodu	Souřadnice pro zdpis do KN		
	Y	X	kód kv.
2544	840182.72	1107359.19	3
2545	840183.29	1107358.76	3
2546	840182.65	1107358.33	3
2547	840190.59	1107356.54	3
2548	840189.99	1107356.10	3
2549	840190.56	1107354.78	3
2550	840189.96	1107354.80	3
2551	840191.04	1107351.40	3
2552	840190.44	1107351.32	3
2553	840191.36	1107349.75	3
2554	840190.78	1107349.63	3
2555	840194.77	1107343.83	3
2556	840194.19	1107343.62	3
2557	840195.68	1107342.05	3
2558	840195.47	1107342.72	3
2559	840195.00	1107342.59	3
2560	840195.15	1107341.91	3
2561	840194.48	1107342.10	3
2562	840196.09	1107338.39	3
2563	840195.51	1107338.23	3
2564	840196.17	1107336.79	3
2565	840195.57	1107336.77	3
2566	840197.97	1107329.58	3
2567	840197.73	1107329.34	3
2568	840197.89	1107328.89	3
2569	840197.31	1107329.76	3
2570	840197.05	1107329.50	3
2571	840197.28	1107328.81	3
2572	840197.69	1107326.98	3
2573	840197.07	1107326.88	3
2574	840199.38	1107322.98	3
2575	840198.82	1107322.75	3
2576	840200.54	1107319.83	3
2577	840200.87	1107320.44	3
2578	840201.26	1107319.85	3
2579	840204.87	1107321.84	3
2580	840204.52	1107322.45	3
2581	840204.32	1107315.50	3
2582	840203.82	1107315.16	3
2583	840209.92	1107307.65	3
2584	840209.42	1107307.31	3
2585	840210.40	1107305.19	3
2586	840210.97	1107305.39	7
2587	840214.59	1107301.36	3
2588	840214.15	1107300.96	3
2589	840216.22	1107297.93	3
2590	840216.78	1107298.17	3
2591	840218.87	1107299.16	3
2592	840218.44	1107299.76	3
2593	840219.07	1107300.09	3
2594	840219.93	1107298.88	3
2595	840218.73	1107298.35	3
2596	840218.17	1107298.11	3
2597	840211.67	1107295.34	3
2598	840211.14	1107294.68	3
2599	840210.65	1107295.03	3
2600	840211.29	1107295.84	3
2601	840221.10	1107292.79	3
2602	840221.62	1107293.07	3
2603	840225.99	1107287.02	3
2604	840225.51	1107286.66	3
2605	840227.58	1107283.67	3
2606	840227.04	1107283.41	3
2607	840228.85	1107281.08	3
2608	840229.08	1107281.76	3
2609	840229.60	1107282.32	3
2610	840230.02	1107281.75	3
2611	840229.51	1107281.19	3
2612	840233.26	1107274.91	3
2613	840233.74	1107275.25	3
2614	840237.91	1107269.23	3
2615	840238.37	1107269.61	3
2616	840243.35	1107263.32	3
2617	840243.79	1107263.72	3
2618	840249.10	1107259.76	3
2619	840248.36	1107259.56	3
2620	840247.32	1107257.22	3
2621	840247.97	1107257.20	3
2622	840247.55	1107256.62	3
2623	840251.09	1107255.80	3
2624	840250.77	1107255.00	3

## Seznam souřadnic (S–JTSK)

Číslo bodu	Souřadnice pro zápis do KN		
	Y	X	kód kv.
2625	840250.11	1107255.24	3
2626	840250.19	1107255.43	3
2627	840245.40	1107255.63	3
2628	840245.02	1107255.04	3
2629	840245.72	1107255.12	7
2630	840245.93	1107251.23	3
2631	840245.21	1107251.51	3
2632	840244.01	1107250.35	3
2633	840244.93	1107250.27	3
2634	840245.64	1107249.29	3
2635	840245.07	1107248.88	3
2636	840241.13	1107255.10	7
2637	840241.01	1107255.70	7
2638	840183.69	1107359.16	3
2639	840183.27	1107359.72	3
2640	840184.20	1107360.22	3
2641	840184.50	1107359.60	3
2642	840186.12	1107361.08	3
2643	840186.44	1107361.32	3
2644	840186.48	1107360.48	3
2645	840186.92	1107360.80	3
2646	840187.75	1107361.78	7
2647	840187.30	1107362.42	7
2648	840192.48	1107370.94	3
2649	840191.86	1107371.26	3
2650	840197.10	1107382.41	3
2651	840197.73	1107382.11	3
2652	840204.84	1107396.81	3
2653	840205.44	1107396.45	3
2654	840207.96	1107401.76	3
2655	840208.60	1107401.46	3
2656	840209.19	1107403.17	3
2657	840208.57	1107403.49	3
2658	840213.45	1107410.38	3
2659	840213.97	1107409.90	3
2660	840215.27	1107411.05	3
2661	840214.77	1107411.55	3
2662	840217.17	1107414.20	3
2663	840216.51	1107414.84	3
2664	840216.96	1107415.38	3
2665	840217.64	1107414.71	3
2666	840219.18	1107416.42	3
2667	840219.64	1107415.88	3
2668	840220.44	1107417.21	3
2669	840221.08	1107416.79	3
2670	840220.68	1107419.03	3
2671	840221.34	1107418.65	3
2672	840221.65	1107419.80	3
2673	840222.15	1107419.30	3
2674	840223.59	1107422.26	3
2675	840224.17	1107421.86	3
2676	840228.57	1107429.70	3
2677	840228.91	1107430.31	3
2678	840232.91	1107427.88	3
2679	840232.63	1107427.24	3
2680	840233.85	1107427.61	3
2681	840233.66	1107426.93	3
2682	840233.44	1107425.91	7
2683	840234.17	1107426.00	3
2684	840234.44	1107427.17	7
2685	840236.64	1107433.69	3
2686	840236.12	1107434.33	3
2687	840239.06	1107434.72	3
2688	840239.36	1107434.05	3
2689	840228.61	1107431.21	3
2690	840228.96	1107431.83	3
2691	840226.31	1107433.00	3
2692	840226.77	1107433.54	3
2693	840231.10	1107435.64	3
2694	840231.37	1107435.90	3
2695	840231.67	1107435.23	3
2696	840231.95	1107435.50	3
2697	840235.89	1107444.32	3
2698	840235.92	1107445.01	3
2699	840236.59	1107444.12	3
2700	840236.62	1107444.83	3
2701	840237.16	1107445.92	3
2702	840236.41	1107445.99	3
2703	840236.77	1107446.59	3
2704	840235.96	1107447.17	3

## Seznam souřadnic (S–JTSK)

Číslo bodu	Souřadnice pro zápis do KN		
	Y	X	kód kv.
2705	840235.60	1107446.57	3
2706	840235.11	1107447.30	3
2707	840235.51	1107447.95	3
2708	840244.55	1107457.93	3
2709	840245.13	1107457.55	3
2710	840257.02	1107478.01	3
2711	840257.62	1107477.65	3
2712	840259.12	1107480.37	3
2713	840258.79	1107479.76	3
2714	840263.84	1107477.44	3
2715	840263.46	1107476.85	3
2716	840261.19	1107485.70	3
2717	840261.81	1107485.36	3
2718	840268.22	1107498.20	3
2719	840268.99	1107498.32	3
2720	840268.66	1107497.56	3
2721	840268.87	1107497.60	3
2722	840280.61	1107491.30	3
2723	840280.70	1107492.10	3
2724	840281.26	1107491.87	3
2725	840283.38	1107489.88	4
2726	840283.72	1107490.60	4
2727	840285.53	1107499.38	3
2728	840285.88	1107499.99	3
2729	840288.49	1107498.87	3
2730	840288.19	1107498.24	3
2731	840287.51	1107502.82	7
2732	840286.97	1107503.08	7
2733	840288.29	1107505.89	3
2734	840288.83	1107505.63	3
2735	840290.04	1107507.37	3
2736	840290.45	1107507.95	3
2737	840292.86	1107506.81	3
2738	840292.56	1107506.18	3
2739	840290.99	1107508.73	3
2740	840290.49	1107509.07	3
2741	840293.94	1107513.58	3
2742	840294.42	1107513.22	3
2743	840295.14	1107514.85	3
2744	840295.42	1107515.49	3
2745	840296.93	1107514.02	3
2746	840297.23	1107514.65	3
2747	840295.44	1107517.06	3
2748	840295.99	1107516.79	3
2749	840295.70	1107518.14	3
2750	840296.28	1107518.00	3
2751	840296.31	1107518.85	3
2752	840295.71	1107518.87	3
2753	840295.11	1107519.96	3
2754	840295.79	1107519.95	3
2755	840296.33	1107522.13	3
2756	840296.85	1107521.83	3
2757	840298.58	1107525.63	3
2758	840298.98	1107525.15	3
2759	840300.45	1107526.40	3
2760	840300.58	1107525.81	3
2761	840300.79	1107525.12	3
2762	840301.45	1107525.36	3
2763	840300.27	1107529.11	3
2764	840299.55	1107529.45	3
2765	840313.77	1107534.81	3
2766	840313.49	1107535.34	3
2767	840325.52	1107540.69	3
2768	840325.31	1107541.35	3
2769	840324.74	1107541.16	3
2770	840324.80	1107540.99	3
2771	839821.40	1107473.31	3
2772	840081.71	1107330.91	3
2773	840081.44	1107331.44	3
2774	840074.83	1107230.16	3
3001	839689.91	1107523.49	7
3002	839690.07	1107524.07	7
3003	839692.52	1107532.45	7
3004	839692.04	1107532.78	7
3005	839735.10	1107514.53	4
3006	839735.77	1107514.08	4
3007	839730.64	1107505.79	5
3008	839730.14	1107506.11	5
3009	839822.16	1107473.27	7
3010	839903.57	1107447.77	7

## Seznam souřadnic (S–JTSK)

Číslo bodu	Souřadnice pro zpis do KN		
	Y	X	kód kv.
3011	839904.85	1107447.02	7
3012	839915.78	1107349.81	7
3013	839904.34	1107350.73	7
3014	839904.74	1107351.22	7
3015	839904.03	1107351.48	7
3016	839942.28	1107435.84	7
3017	839942.86	1107435.68	7
3018	839940.43	1107424.43	4
3019	839941.21	1107424.23	4
3020	840040.80	1107404.21	7
3021	840041.03	1107403.64	7
3022	840043.06	1107415.95	4
3023	840028.64	1107398.55	7
3024	840031.86	1107396.90	7
3025	840030.84	1107394.74	7
3026	840031.33	1107395.27	7
3027	840042.96	1107360.02	7
3028	840042.99	1107359.31	7
3029	840058.58	1107338.78	3
3030	840058.74	1107339.38	3
3031	840063.06	1107337.87	3
3032	840063.67	1107337.51	3
3033	840040.46	1107338.81	7
3034	840033.26	1107316.35	7
3035	840033.37	1107317.06	7
3036	840024.45	1107300.63	4
3037	840024.60	1107299.95	4
3038	840032.59	1107275.17	7
3039	840032.82	1107274.52	7
3040	840042.37	1107261.64	7
3041	840042.11	1107260.99	7
3042	840049.75	1107254.92	7
3043	840063.01	1107241.33	7
3044	840063.51	1107240.85	7
3045	840080.61	1107225.81	7
3046	840081.17	1107225.39	7
3047	840106.45	1107206.14	3
3048	840121.13	1107193.76	7
3049	840121.75	1107193.24	7
3050	840141.04	1107177.12	7
3051	840141.17	1107176.42	7
3052	840148.08	1107175.55	7
3053	840151.25	1107174.10	7
3054	840162.77	1107168.35	7
3055	840165.26	1107166.96	7
3056	840170.40	1107162.92	7
3057	840168.18	1107160.40	7
3058	840164.53	1107143.60	7
3059	840164.98	1107144.16	7
3060	840171.25	1107163.57	7
3061	840172.60	1107162.77	7
3062	840178.34	1107167.34	7
3063	840178.83	1107166.96	7
3064	840188.80	1107181.21	3
3065	840198.73	1107177.78	7
3066	840198.38	1107178.31	7
3067	840213.15	1107157.66	7
3068	840212.56	1107157.52	7
3069	840162.82	1107239.38	3
3070	840246.61	1107255.85	7
3071	840250.88	1107255.28	7
3072	840229.88	1107281.60	3
3073	840229.39	1107282.10	3
3074	840218.69	1107299.08	7
3075	840219.02	1107298.48	7
3076	840211.22	1107294.78	7
3077	840210.76	1107295.16	7
3078	840210.87	1107304.66	7
3079	840204.72	1107321.76	7
3080	840204.36	1107322.36	7
3081	840195.24	1107342.66	7
3082	840195.48	1107342.00	7
3083	840170.67	1107361.44	7
3084	840169.87	1107361.57	7
3085	840070.70	1107311.81	3
3086	840070.83	1107311.12	3
3087	840071.16	1107304.68	8
3088	840070.46	1107304.55	8
3089	840236.85	1107433.72	7
3090	840237.10	1107434.46	7
3091	840263.15	1107477.04	3

## Seznam souřadnic (S–JTSK)

Číslo bodu	Souřadnice pro zpis do KN		
	Y	X	kód kv.
3092	840263.52	1107477.64	3
3093	840274.04	1107494.82	7
3094	840274.42	1107495.44	7
3095	840283.05	1107495.02	7
3096	840282.51	1107495.28	7
3097	840288.31	1107498.95	4
3098	840288.01	1107498.32	4
3099	840292.68	1107506.89	4
3100	840292.39	1107506.26	4
3101	840292.30	1107510.44	7
3102	840291.74	1107510.70	7
3103	840297.05	1107514.74	4
3104	840296.74	1107514.11	4
3105	840296.56	1107521.31	7
3106	840295.81	1107521.21	7
3107	840299.14	1107525.22	7
3108	840301.09	1107526.52	7
3109	840300.39	1107528.74	8
3110	840299.83	1107528.49	8
3111	840072.77	1107244.22	3
3112	840073.22	1107243.81	3
3113	840078.19	1107249.40	8
3114	840077.61	1107249.71	8
3115	840104.55	1107231.22	3
3116	840105.18	1107231.14	3
3117	840118.99	1107222.29	4
3118	840118.64	1107221.68	4
3119	840108.20	1107216.16	7
3120	840107.73	1107216.53	7
3121	840140.11	1107189.51	7
3122	840139.48	1107189.82	7
3123	840144.34	1107192.21	7
3124	840144.07	1107192.76	7