

11



6333

6352

5854

6355

5855

6353

5856

6356

6354

5857

6334/1

1142/9

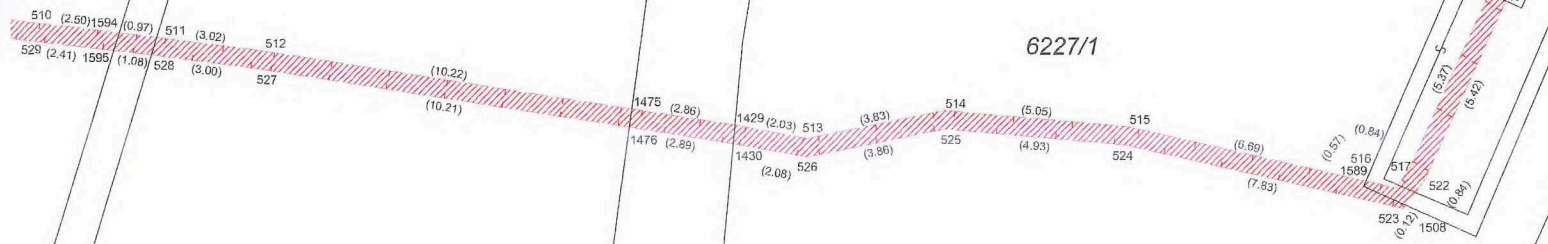
1142/6

1142/10

6357

6249

1142/9



6227/1

5948

6245

6244

5947

6230

6262/2

6252

6249

6246

6254

1142/6

5946

5937

6255

1142/10

6256

6248

5936



6333

5857

6334/1

6291/1

6327/1

6357

1142/37

1142/34

1142/10

6451

6422

5880

1142/306

1142/304

1142/6

1142/302

1142/301

1142/303

6425/2

14



5880

6422

6425/2

1142/304

1142/306

6249

6429

'1

6421

6451

5881

6423

6425/2

6426/2

6426/1

6427

15

5880

6420/1

6423

(8.33)  
(8.34)

32 260

(22.40)  
(22.82)

33 259

(8.34)  
(8.20)

34 258

(7.89)  
(7.89)

35 257

(12.05)  
(12.05)

36 256

6451

6434/2

6425/2

5881

6425/1



17



Detail H

Detail H

Detail I

Detail I

18



Detail J



# 19

6436

5929

6434/1

Detail K

1142/33

Detail L

6437

6437

6438

Detail K

6434/1

Detail L

5928

6438

6429

6437

6429

6432

5927

6438

6431

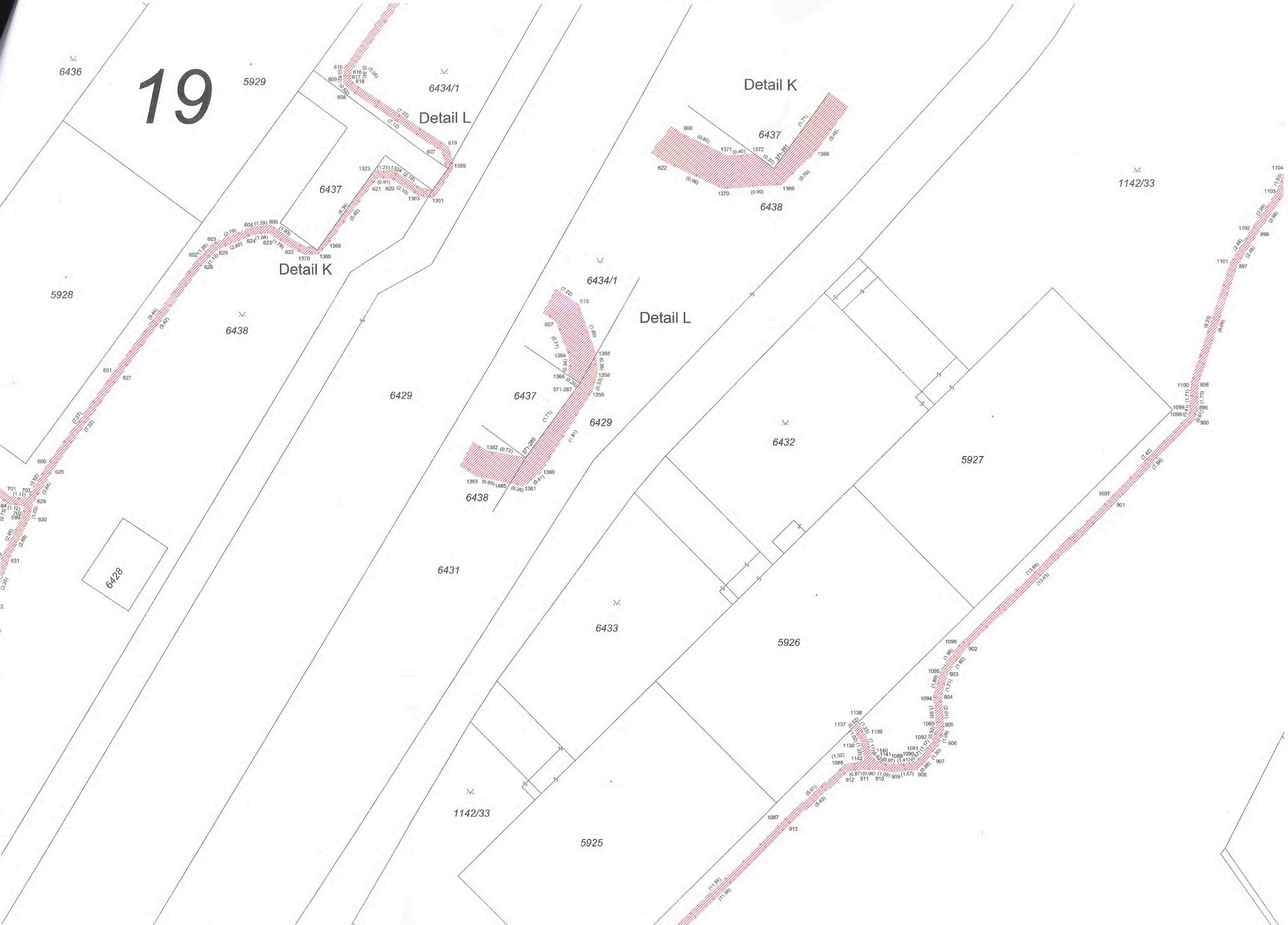
6433

5926

6428

1142/33

5925

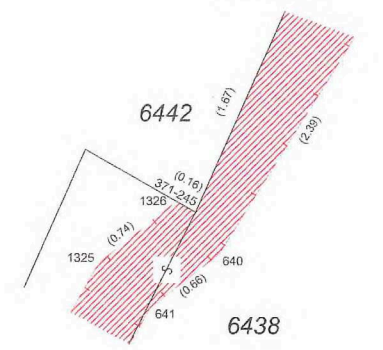


20

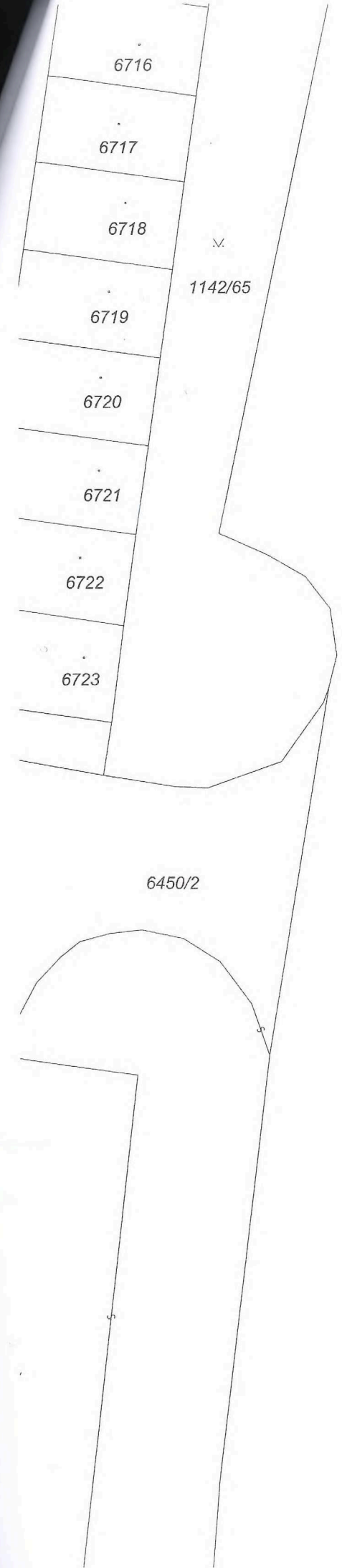


Detail J

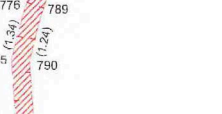
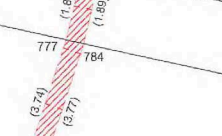
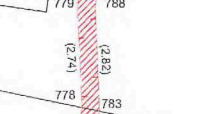
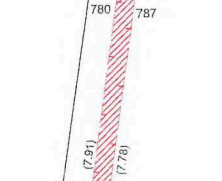
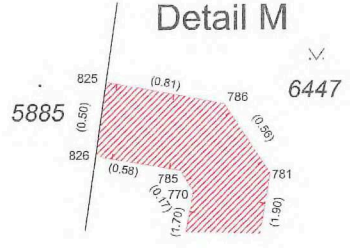
Detail J



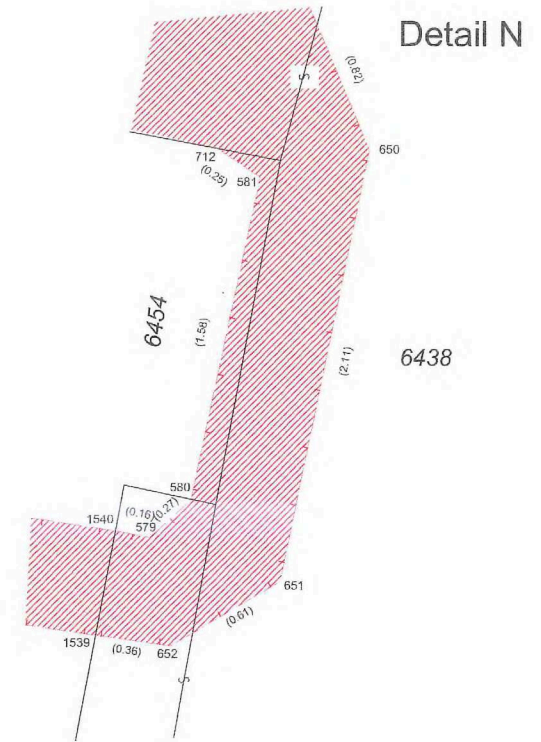
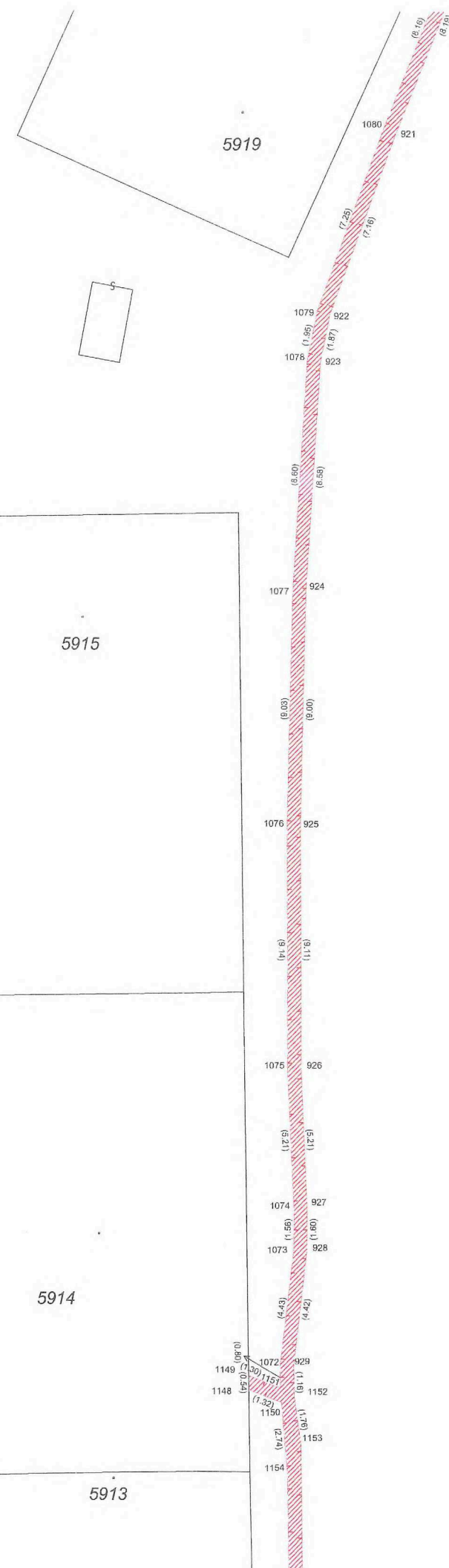
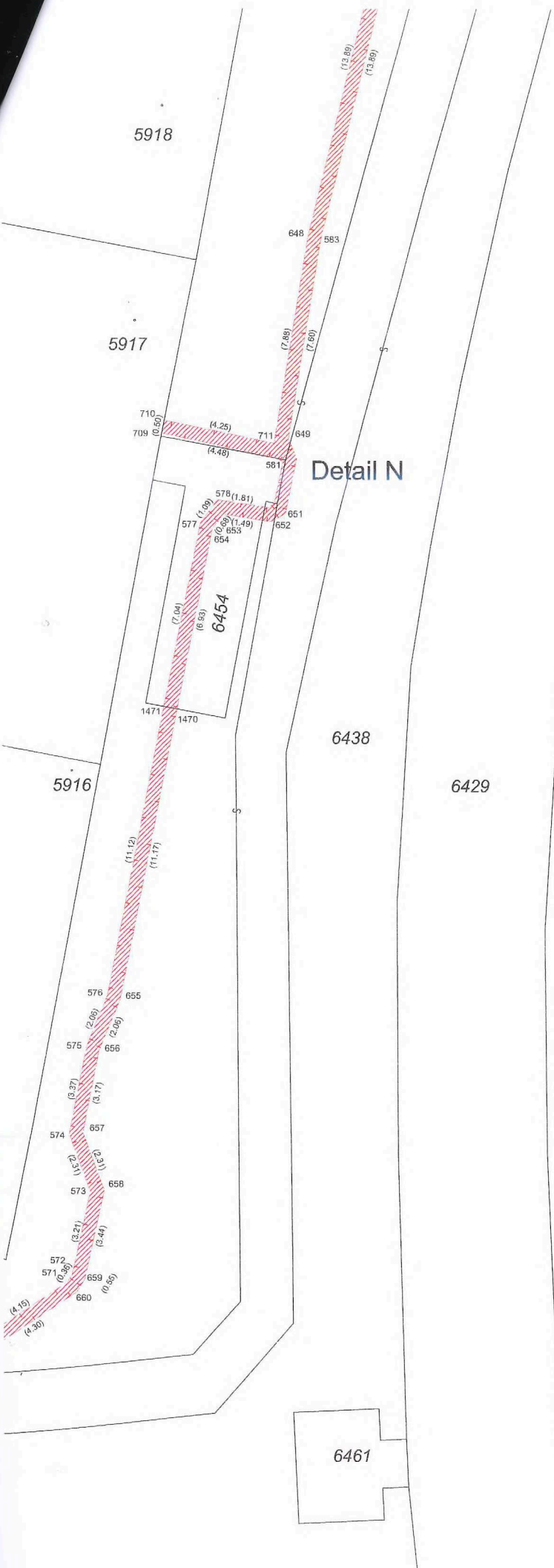
21



Detail M



22



1142/33

23

6450/1

6462

6463

6467

5891

5890/2

5890/1

5887

5888

5889

6464

6465

6466

Detail O

6466

Detail O

6471

6453

5916

Detail P

6438

5912

6451

Detail P

6438

5912

6472

5911

6474



24

5912

6438

5911

6474

6429

5910

6431

6459

5913

6460

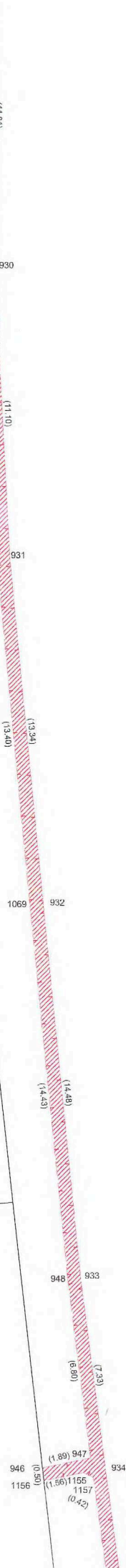
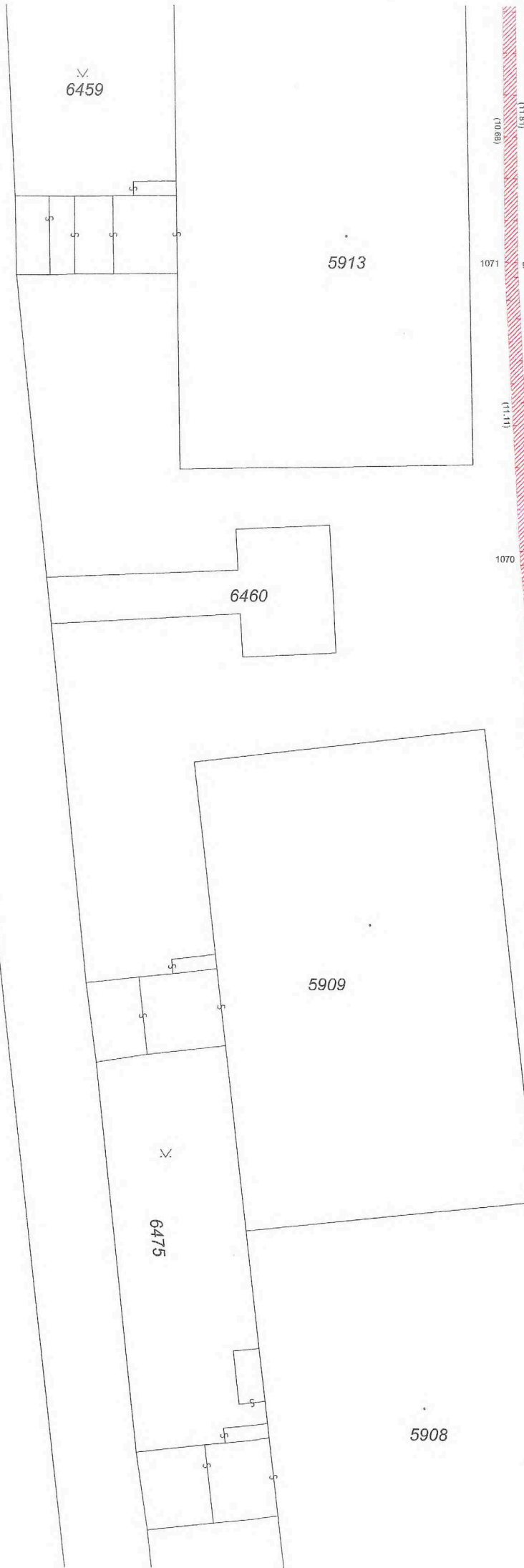
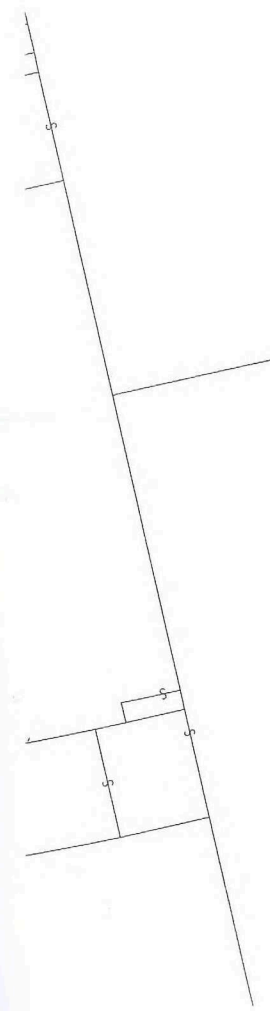
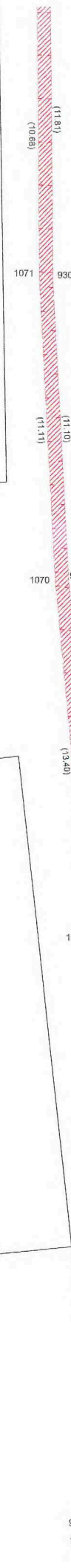
1142/33

5909

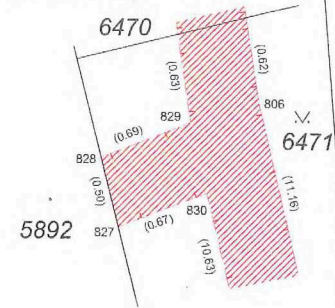
6475

5908

741 (3.30)  
742 (3.30)  
743 (0.61)  
744 (0.61)  
745 (0.61)  
746 (0.61)  
747 (0.61)  
748 (0.61)  
749 (0.61)  
750 (0.61)  
751 (0.61)  
752 (0.61)  
753 (0.61)  
754 (0.61)  
755 (0.61)  
756 (0.61)  
757 (0.61)  
758 (0.61)  
759 (0.61)  
760 (0.61)  
761 (0.61)  
762 (0.61)  
763 (0.61)  
764 (0.61)  
765 (0.61)  
766 (0.61)  
767 (0.61)  
768 (0.61)  
769 (0.61)  
770 (0.61)  
771 (0.61)  
772 (0.61)  
773 (0.61)  
774 (0.61)  
775 (0.61)  
776 (0.61)  
777 (0.61)  
778 (0.61)  
779 (0.61)  
780 (0.61)  
781 (0.61)  
782 (0.61)  
783 (0.61)  
784 (0.61)  
785 (0.61)  
786 (0.61)  
787 (0.61)  
788 (0.61)  
789 (0.61)  
790 (0.61)  
791 (0.61)  
792 (0.61)  
793 (0.61)  
794 (0.61)  
795 (0.61)  
796 (0.61)  
797 (0.61)  
798 (0.61)  
799 (0.61)  
800 (0.61)



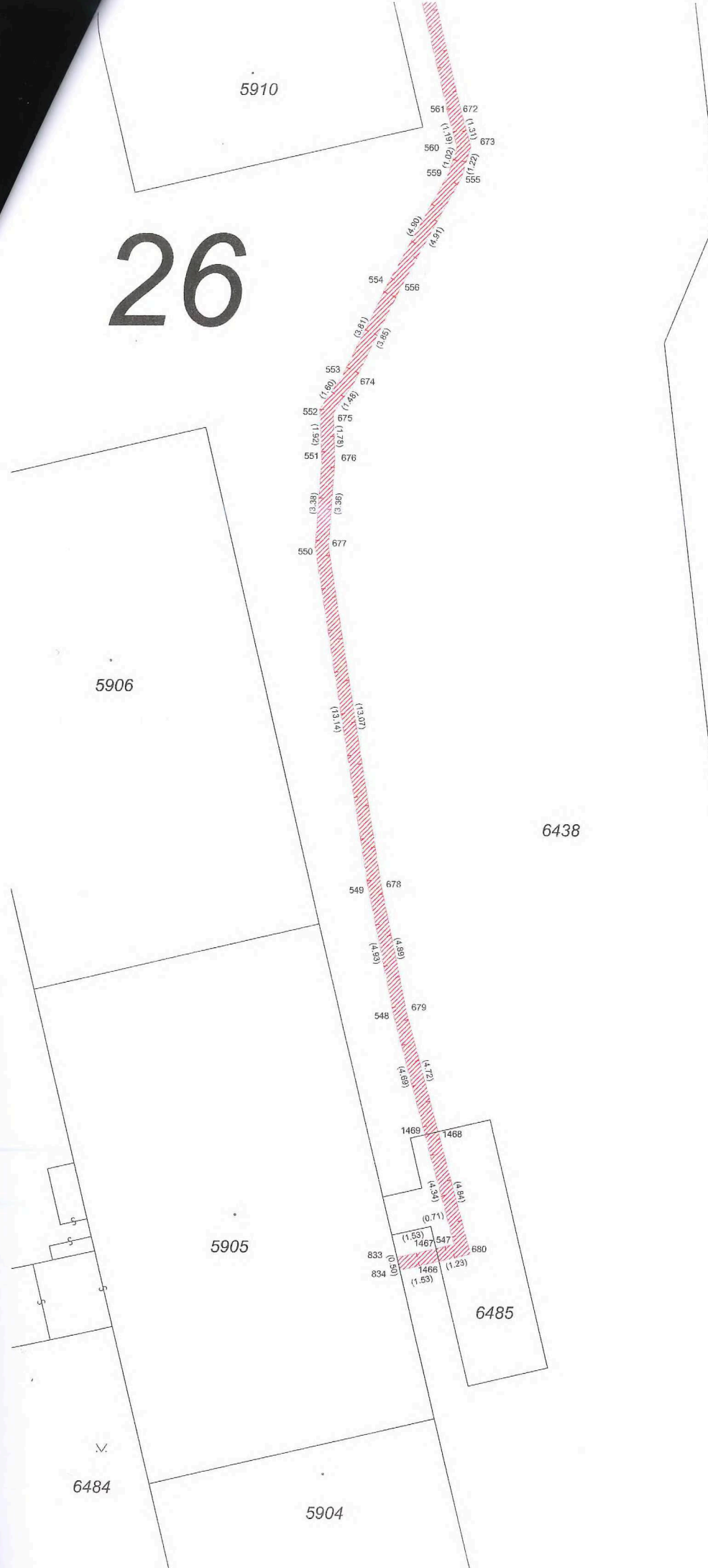
Detail Q



Detail Q



26



6438

6429

6431

6486

5903

5902

5908

6476

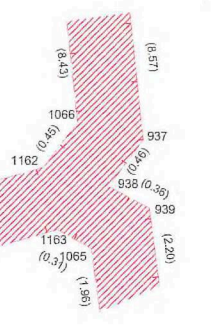
5907

Detail R

1142/33

Detail R

1142/33





27



6477

6471

6463

6450/2

6482

6451

5894

6479

6478

6450/1

6491/1

5895

6481

6480

5896

1142/138

28

5904

6438

6429

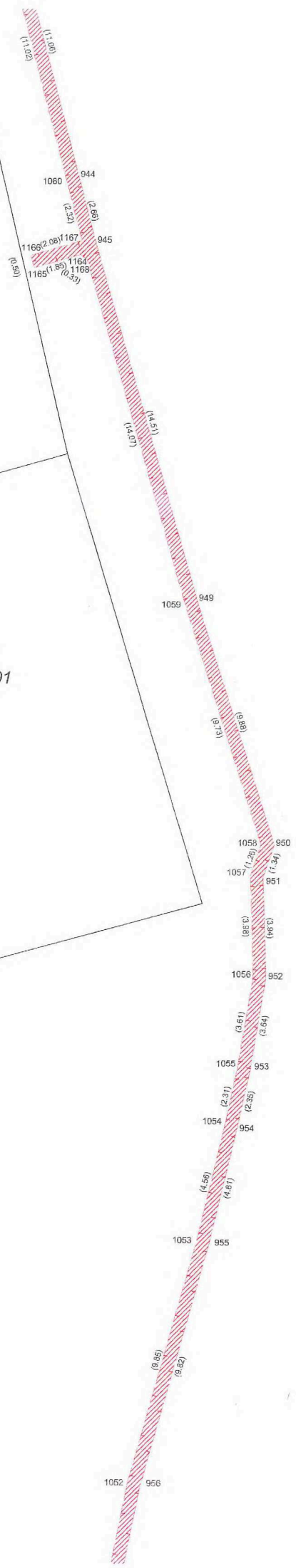
6431

6486

6487

5902

5901



1142/33

5897/1

6490/3

6429

7518

6490/4

29

1142/137

1142/33

5898/1

6492

1142/33

6493

5899

1142/129

1142/117

1142/115



30

6429

5900

1142/33

6494

1142/33

6493

5899

