

SILVIA GRIBAUDI

Grand Jeté

Technical Rider Premiere Prague

SPACE

White dance floor 9 m width x 10 m deep

White backdrop in PVC, same width of dance floor

To mask the side draft and the bows on the top, we ask a black masking for the backdrop with two little side wings and one high wing

We left a little space between wings and wall to allow the passage for the dancers.

The stage will be completely naked without wings or black box (except for the white backdrop and his masking)

The side of the space have to be as clean as possible.

Between the end of white dance floor and the wall could be placed a black dance floor or used the naked floor of the stage.

LIGHTS

20 x Pc / Fresnel 1000w with barndoors and frames

7 x Pc / Fresnel 2000w with barndoors and frames (5 fresnel + 2 ARRI)

32 x Par 64cp62 with frames

17 x asymmetrical floods with frames

4 x Profiles ETC zoom 25/50° with frames

3 x Fos Luminos

6 x sidelights towers with multiple heights

Cables and accessories for all lights equipments

55 x 2,5 kw channel dimmer

1 x dmx splitter

Light console basic for focusing.

The show will be performed with Eos Etc Nomad software, we request an external screen with HDMi attack and relative cable.

We request a dmx 5 pole.

Filters: L201, L202, L200, L206, L013, R119 or L253 in case of pc.

SOUND

PA composed by 2 heads hi/mid Freq and 1 Subwoofer

4 stage monitors (good power)
Digital audio mixer X32
1 cable minijack for the laptop
1 D.I. stereo for laptop cable
2 radio microphones hand with receiver
4 microphones Shure mx393/o placed on the floor

EFFECTS

The use of smoke on stage is planned.
The smoke machine and liquid will be provide by the company.

OTHER REQUESTS

Dressing room for the performers (at least 5) with mirrors, shower with hot water, towels, toilet and a light catering (fruits, water, salty and sweet snacks)
We request iron and iron board.
We request a cleaning service to the stage costumes.
More details soon.

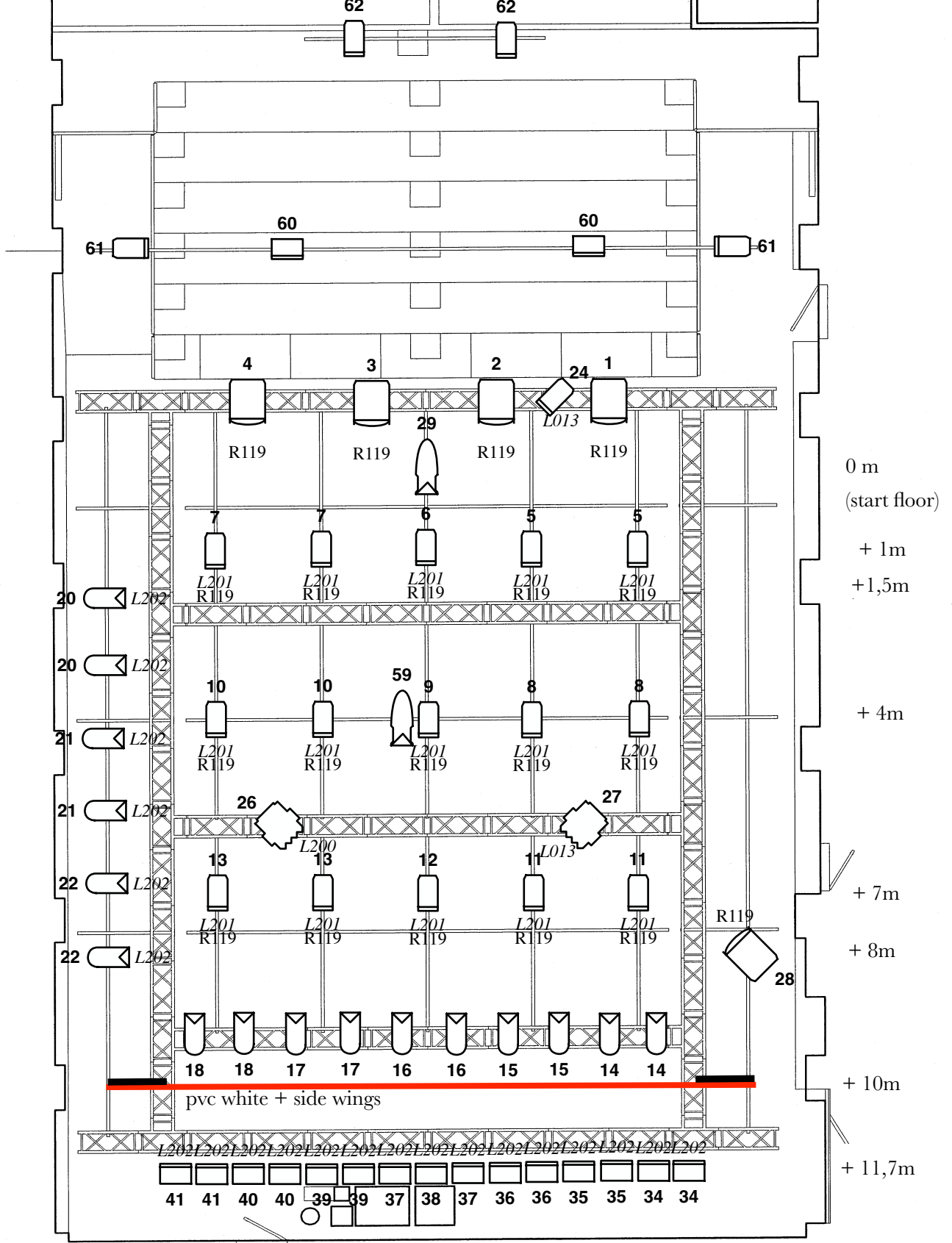
TRAVELLING PARTY

11 Dancers
1 Technician
1 Assistant
1 Tour manager


TECHNICAL PERSONNEL REQUESTED

As planned


Technical Director
Luca Serafini
+393924978370
luca.serafini.bo@gmail.com




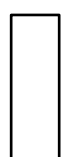
 5 x Pc or Fresnel 2000w with barndoor and frames

 20 x Pc or Fresnel 1000w with barndoor and frames

 32 x Par 64cp62 with frames

 17 x Asymmetrical Flood lights 1000w

 4 x Profilers 25/50° with frames

 6 x Sidelights towers
h 0,5m; 1,5m; 2m

 3 x Fos Luminus Led

 2 x ARRI 2000w with frames

SIDE TOWER 1

- 42 ◀ L206
- 43 ◀ L201
- 44 ◀ L201

SIDE TOWER 2

- 45 ◀ L206
- 46 ◀ L201
- 47 ◀

SIDE TOWER 3

- 48 ◀
- 49 ◀ L201
- 50 ◀ L206

SIDE TOWER 4

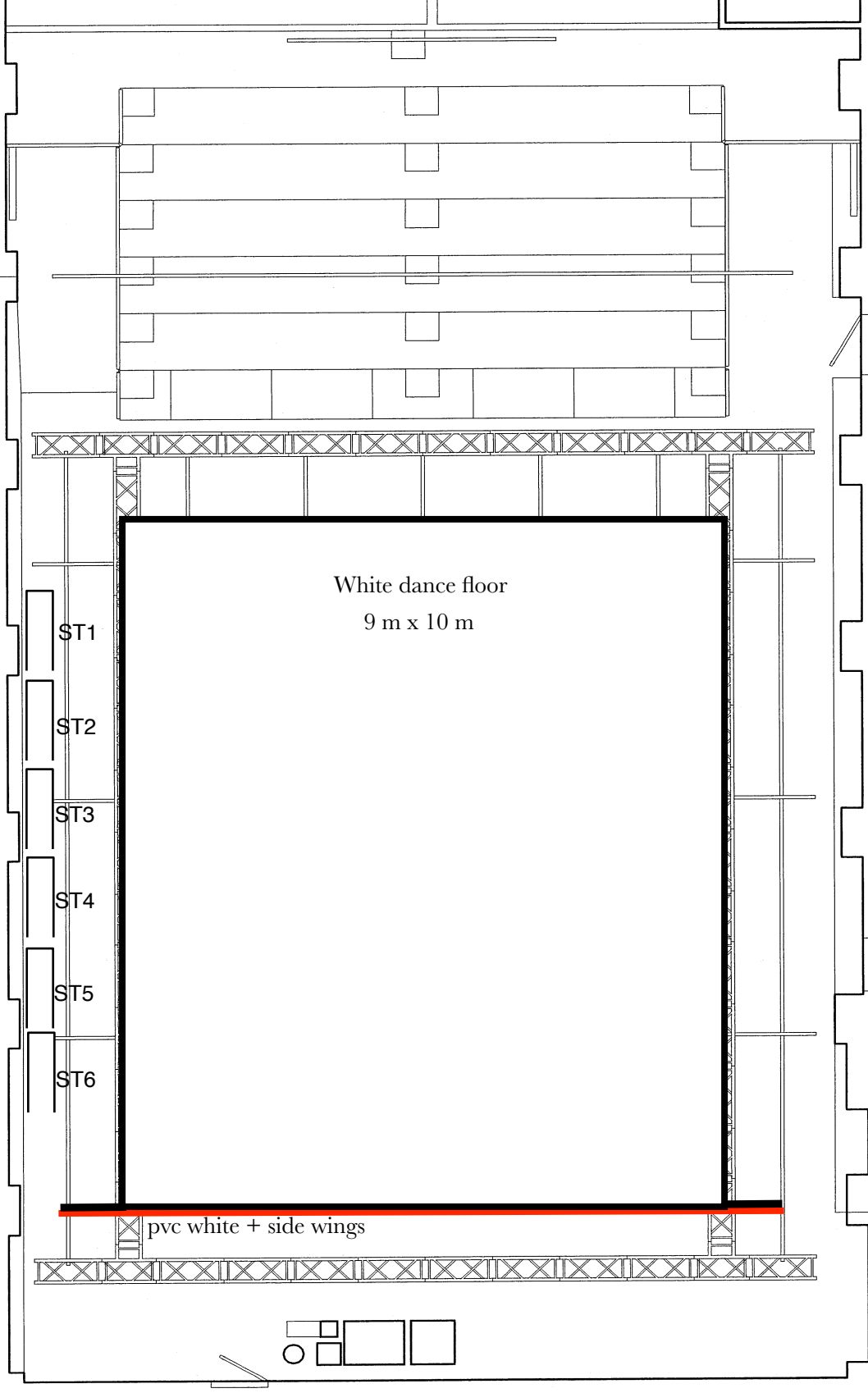
- 48 ◀ L200
- 51 ◀ L206
- 52 ◀ L206

SIDE TOWER 5

- 53 ◀ L201
- 54 ◀ L206
- 55 ◀ L206

SIDE TOWER 6

- 56 ◀ L201
- 57 ◀ L206
- 58 ◀ L206



0 m
(start floor)

+2m
(first side tower)

+ 7m
(last sidetower)

+10m
(white pvc)

FILTERS

- L201: 15x pc 1000w
8x Par 64
- L200: 1x pc 2000w
1 x Profiler
- L202: 15x flood
6x Par 64

- R119 or L253: 5x pc 2000w
15x pc 1000w
- L206: 8x Par 64
- L013: 1x pc 1000w
1 x pc 2000w

WHITE BACKDROP WITH RECLARED

