

VÝKAZ DOSAVADNÍHO A NOVÉHO STAVU ÚDAJŮ KATASTRU NEMOVITOSTÍ

Dosavadní stav				Nový stav													
Označení pozemku parc. číslem	Výměra parcely		Druh pozemku	Označení pozemku parc. číslem	Výměra parcely		Druh pozemku	Typ stavby	Způsob využití	Způsob využití	Způsob určení výměr	Porovnání se stavem evidence právních vztahů					
	ha	m ²	Způsob využití		ha	m ²	Způsob využití	Způsob využití				Díl přechází z pozemku označeného v		Číslo listu vlastnictví	Výměra dílu		Označení dílu
												katastru nemovitosti	dřívější poz. evidenci		ha	m ²	
1457/30												1457/30		2599			
6439/1												6439/1		5966			
6439/66												6439/66		5966			
7696/4												7696/4		4982			
7696/6												7696/6		4982			
7696/41												7696/41		4982			
7696/43												7696/43		4982			
7702/1												7702/1		5966			
7702/3												7702/3		5966			
7702/10												7702/10		4982			
7702/16												7702/16		4982			
7702/22												7702/22		4982			
7702/28												7702/28		4982			
7702/40												7702/40		4982			
7702/43												7702/43		4982			
7702/46												7702/46		4982			
7702/51												7702/51		4982			
7702/52												7702/52		4982			
7702/54												7702/54		4982			
7702/55												7702/55		4982			
7702/60												7702/60		4982			
7702/61												7702/61		4982			
7702/63												7702/63		4982			
7702/76												7702/76		4982			
7702/77												7702/77		4982			
7702/93												7702/93		4982			
7702/96												7702/96		4982			
7702/100												7702/100		4982			
7702/116												7702/116		4982			
7708/1												7708/1		5966			
7708/2												7708/2		5966			
7708/3												7708/3		4982			
7708/4												7708/4		4982			
7708/5												7708/5		4982			
7708/6												7708/6		4982			
7708/7												7708/7		4982			
7708/8												7708/8		4982			
7708/9												7708/9		4982			
7708/10												7708/10		4982			
7708/11												7708/11		4982			
7708/12												7708/12		4982			
7708/13												7708/13		4982			
7708/14												7708/14		4982			
7708/15												7708/15		4982			
7708/16												7708/16		4982			
7708/17												7708/17		10001			
7708/18												7708/18		4982			
7708/19												7708/19		4982			
7708/20												7708/20		4982			
7708/21												7708/21		4982			
7708/22												7708/22		4982			
7708/23												7708/23		4982			
7708/24												7708/24		4982			
7708/25												7708/25		4982			
7708/26												7708/26		4982			
7708/27												7708/27		4982			
7708/28												7708/28		4982			
7708/33												7708/33		4982			
7708/35												7708/35		4982			
7708/36												7708/36		4982			

Seznam souřadnic (S-JTSK)

Číslo bodu	Souřadnice pro zápis do KN Y	X	Kód kv.	Poznámka
1938-303	531801.63	1168514.27	8	
2156-77	531663.24	1168214.28	3	
2156-194	531625.94	1168150.64	3	
2156-197	531607.55	1168129.27	3	
2156-198	531602.69	1168124.45	3	
2156-206	531576.72	1168102.62	3	
2156-230	531816.03	1168526.79	3	
2156-257	531683.69	1168255.53	3	
2156-260	531693.54	1168283.26	3	
2156-760	531660.35	1168204.25	3	
2352-34	531660.88	1168222.83	3	
2352-42	531665.48	1168239.42	3	
2352-44	531667.73	1168241.74	3	
2352-45	531670.01	1168243.50	3	
2352-48	531672.09	1168244.72	3	
2352-50	531673.98	1168245.58	3	
2352-52	531675.74	1168246.19	3	
2352-64	531685.37	1168256.48	3	
2352-66	531689.09	1168264.66	3	
2352-67	531690.18	1168267.89	3	
2352-73	531694.06	1168285.02	3	
2352-88	531721.63	1168374.11	3	
2352-217	531565.40	1168095.25	3	
2352-224	531586.05	1168108.67	3	
2352-250	531655.53	1168191.63	3	
2352-251	531657.49	1168195.34	3	
2352-362	531695.31	1168283.85	3	
2352-363	531689.71	1168266.49	8	
2352-366	531675.17	1168245.99	8	
2356-55	532054.01	1168715.28	3	
2356-56	532057.46	1168725.73	3	
2356-251	532069.52	1168761.54	3	
2501-62	532060.48	1168734.62	3	
2501-63	532063.59	1168743.86	6	
2861-26	532071.34	1168760.99	3	
2958-455	531646.79	1168177.15	8	
2958-475	531625.56	1168150.17	6	
3240-18	531866.78	1168553.04	8	
3245-69	531734.36	1168419.49	3	
3245-116	531663.06	1168209.65	3	
3245-174	531651.10	1168183.69	8	
3245-254	532022.65	1168675.55	8	
1	531537.91	1168076.82	3	
2	531538.77	1168077.53	3	
3	531563.89	1168094.06	3	
4	531565.96	1168095.65	3	
5	531581.72	1168106.23	3	
6	531590.35	1168111.32	3	
7	531660.89	1168205.66	3	
8	531659.23	1168226.50	3	
9	531693.73	1168284.61	3	
10	531694.77	1168283.67	3	
11	531694.24	1168285.61	3	
16	531727.91	1168386.75	8	
17	531727.38	1168385.97	8	
18	531817.70	1168526.40	8	
19	532060.66	1168735.15	6	
21	532061.23	1168736.86	6	
23	532071.71	1168767.75	3	
24	532029.81	1168691.24	3	
25	532030.84	1168693.66	3	
26	531966.56	1168612.04	8	
27	531967.50	1168612.82	8	
28	531938.29	1168591.49	8	
29	531939.41	1168592.18	8	

30	531907.62	1168574.57	3
31	531908.55	1168575.04	3
32	531876.08	1168559.44	8
33	531876.84	1168559.83	8
34	532071.12	1168760.32	6
35	532070.31	1168760.51	3
36	532073.72	1168768.19	3
37	532072.61	1168767.43	3
38	532071.04	1168769.17	3
39	532059.97	1168736.93	3
42	532059.49	1168736.22	3
43	532060.61	1168735.92	3
44	532059.55	1168735.29	3
45	532053.37	1168716.69	3
46	532052.92	1168715.77	3
47	532051.12	1168710.18	3
48	532051.96	1168709.46	6
49	532047.34	1168702.38	3
50	532048.38	1168702.00	3
51	532046.80	1168700.49	3
52	532047.54	1168699.05	3
53	532037.32	1168703.90	3
54	532037.78	1168702.56	3
55	532030.81	1168691.78	3
56	532031.20	1168689.74	3
57	532032.54	1168689.92	3
58	532028.81	1168685.28	3
59	532029.75	1168684.72	3
60	532025.97	1168681.02	8
61	532027.34	1168681.10	3
62	532021.41	1168673.31	3
63	532022.34	1168672.72	3
64	532014.72	1168663.36	3
65	532015.32	1168662.27	3
66	532011.81	1168663.30	3
67	532013.29	1168662.23	3
68	532012.66	1168660.48	3
69	532013.88	1168660.27	3
70	532003.38	1168648.21	8
71	532004.41	1168647.74	8
72	531998.36	1168642.09	3
73	531999.20	1168641.39	3
74	531993.57	1168636.48	3
75	531994.04	1168635.33	3
76	531990.66	1168636.72	3
77	531992.01	1168635.50	3
78	531991.20	1168633.85	3
79	531992.38	1168633.51	3
80	531985.45	1168627.66	3
81	531986.24	1168626.90	3
82	531978.59	1168620.83	3
83	531979.35	1168620.03	3
84	531969.34	1168612.40	3
85	531969.66	1168611.20	3
86	531967.68	1168611.65	3
87	531966.63	1168610.14	3
88	531967.75	1168609.64	3
89	531963.80	1168607.80	8
90	531964.95	1168607.30	8
91	531956.46	1168602.04	3
92	531957.12	1168601.16	3
93	531948.57	1168596.42	3
94	531949.19	1168595.51	3
95	531941.13	1168591.52	3
96	531941.26	1168590.29	3
97	531939.35	1168591.02	3
98	531938.13	1168589.63	3
99	531939.18	1168588.98	3
100	531932.42	1168586.17	8

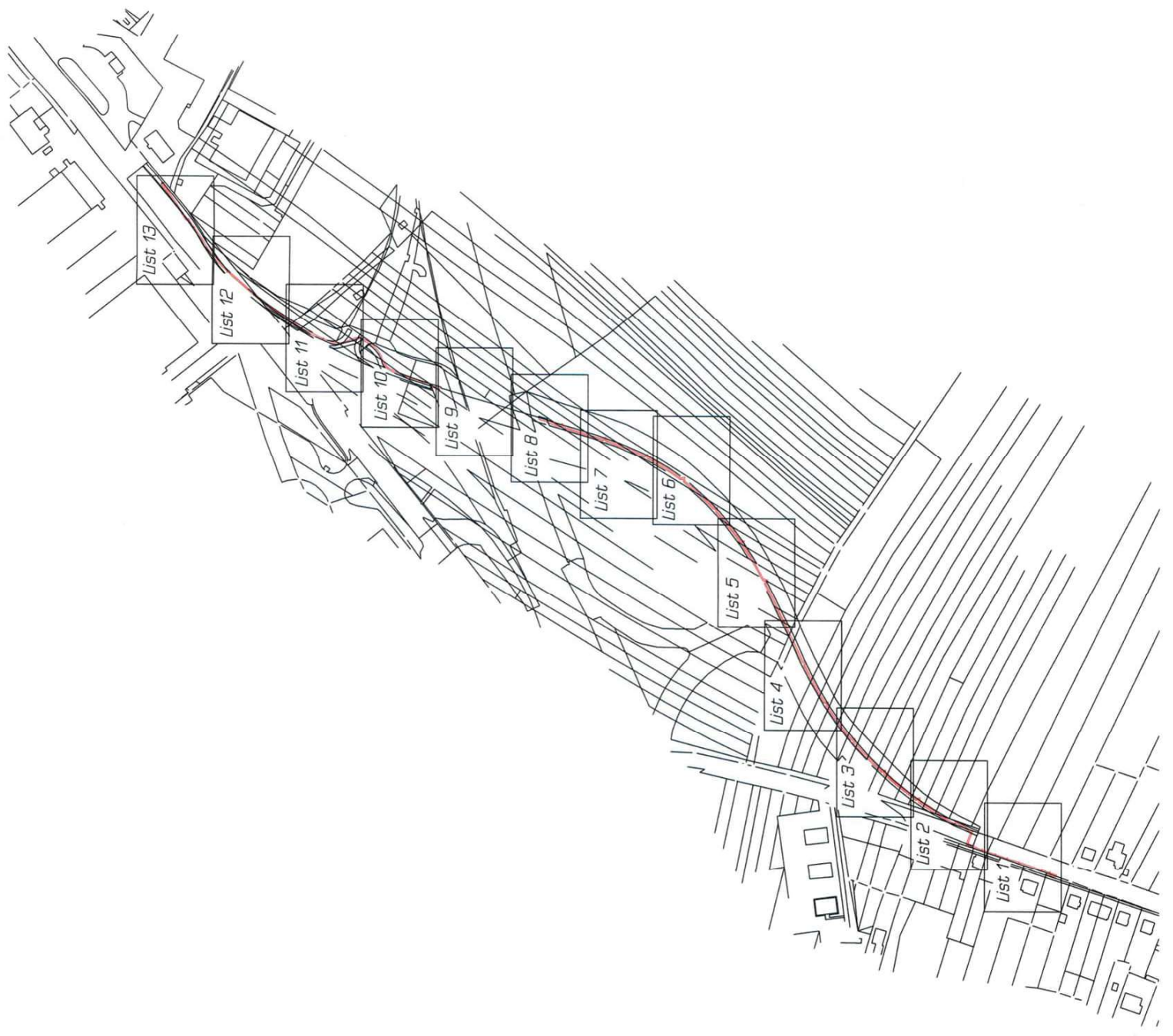
101	531933.63	1168585.62	8
102	531920.86	1168579.65	8
103	531922.08	1168579.05	8
104	531910.42	1168574.11	3
105	531910.44	1168572.88	3
106	531908.60	1168573.79	3
107	531907.26	1168572.51	3
108	531908.25	1168571.77	3
109	531888.42	1168563.26	3
110	531888.89	1168562.27	3
111	531878.85	1168558.75	3
112	531878.82	1168557.52	3
113	531877.01	1168558.49	3
114	531875.64	1168557.24	3
115	531876.60	1168556.48	3
116	531860.90	1168550.30	3
117	531861.38	1168549.31	3
118	531847.40	1168543.61	3
119	531847.39	1168542.38	3
120	531844.66	1168545.02	3
121	531845.53	1168543.33	3
122	531843.78	1168541.73	8
123	531845.23	1168541.27	3
124	531834.15	1168536.56	3
125	531834.69	1168535.60	3
126	531825.32	1168531.36	3
127	531825.90	1168530.43	3
128	531817.48	1168524.94	3
129	531814.45	1168527.07	3
130	531815.52	1168525.57	3
131	531814.40	1168524.11	3
132	531815.49	1168523.55	3
133	531808.22	1168519.53	3
134	531808.89	1168518.66	3
135	531799.78	1168511.33	8
136	531791.82	1168505.74	3
137	531792.15	1168504.57	3
138	531788.87	1168506.24	3
139	531790.13	1168504.91	3
140	531789.21	1168503.32	3
141	531790.37	1168502.90	3
142	531784.94	1168499.22	3
143	531785.72	1168498.44	3
144	531777.83	1168491.67	3
145	531777.28	1168489.32	3
146	531771.13	1168483.78	3
147	531771.98	1168483.08	3
148	531768.69	1168480.69	3
149	531769.21	1168479.57	3
150	531765.69	1168480.78	3
151	531767.17	1168479.63	3
152	531766.54	1168477.83	3
153	531767.74	1168477.64	3
154	531759.02	1168466.94	3
155	531759.95	1168466.35	3
156	531753.66	1168458.06	3
157	531754.62	1168457.51	3
158	531750.79	1168452.61	3
159	531751.51	1168451.60	3
160	531747.77	1168452.16	3
161	531749.45	1168451.30	3
162	531749.16	1168449.43	3
163	531750.39	1168449.45	3
164	531744.47	1168439.52	3
165	531744.73	1168437.49	8
166	531740.68	1168430.01	3
167	531741.70	1168429.62	3
168	531737.26	1168420.36	3
169	531738.11	1168419.47	3

170	531736.16	1168418.86	3
171	531736.10	1168416.99	3
172	531737.31	1168417.17	3
173	531733.18	1168407.98	8
174	531735.39	1168411.25	8
175	531726.82	1168386.93	3
176	531724.06	1168385.90	3
177	531725.81	1168385.38	3
178	531725.76	1168383.59	8
179	531727.02	1168383.74	3
180	531725.31	1168381.91	3
181	531726.34	1168381.52	3
182	531722.62	1168373.26	3
189	531695.30	1168285.02	3
190	531696.18	1168284.14	3
191	531693.54	1168281.67	3
192	531694.65	1168281.78	3
193	531691.19	1168274.24	3
194	531687.12	1168262.84	8
195	531681.36	1168251.40	3
196	531682.24	1168250.70	3
197	531678.34	1168248.64	3
198	531678.96	1168247.72	3
199	531676.30	1168247.59	8
200	531676.13	1168246.29	3
201	531671.66	1168245.60	3
202	531667.89	1168243.18	3
203	531662.01	1168237.89	3
204	531662.85	1168237.16	3
205	531657.97	1168229.56	3
206	531659.08	1168229.33	3
207	531658.14	1168226.25	3
208	531661.14	1168219.30	3
209	531662.20	1168214.62	3
210	531661.92	1168209.79	3
211	531661.83	1168204.86	3
212	531658.55	1168200.33	3
213	531654.58	1168192.31	3
214	531651.75	1168186.49	3
215	531652.71	1168185.94	3
216	531642.95	1168173.33	3
217	531637.33	1168165.16	3
218	531638.22	1168164.51	3
219	531631.82	1168157.79	3
220	531632.68	1168157.11	3
221	531625.71	1168148.65	3
222	531616.23	1168139.43	3
223	531617.06	1168138.71	3
224	531609.97	1168130.38	3
225	531602.80	1168123.26	3
226	531595.03	1168116.98	3
227	531595.79	1168116.19	3
228	531589.70	1168112.21	3
229	531581.12	1168107.16	3
230	531566.96	1168097.30	3
231	531567.03	1168095.91	3
232	531566.05	1168096.86	3
233	531565.86	1168096.08	3
234	531567.14	1168095.45	3
235	531566.87	1168094.74	3
236	531553.06	1168086.76	3
237	531555.94	1168087.34	3
238	531543.97	1168080.79	3
239	531544.61	1168079.89	3
240	531539.22	1168077.12	3
241	531539.16	1168075.69	3
242	531694.90	1168285.20	8
243	532072.08	1168768.79	3
246	531695.69	1168286.33	8

247	531697.71	1168289.22	8
252	531660.05	1168224.67	8
253	531659.29	1168223.59	8
254	531659.20	1168227.05	3
255	531658.05	1168228.02	3
256	531659.76	1168230.74	3
257	531658.03	1168228.44	3
258	531659.18	1168227.44	3
259	531658.92	1168231.52	3
260	531659.91	1168231.05	3
261	531662.71	1168238.52	3
262	531689.06	1168268.26	3
263	531696.41	1168284.92	3
264	531646.09	1168178.03	3
265	531650.47	1168184.58	3
266	531662.09	1168212.65	8
267	531661.74	1168216.64	3
268	531681.76	1168250.27	3
269	531629.82	1168153.64	8
270	531593.38	1168114.03	3
271	531577.79	1168103.39	3
272	531552.63	1168085.16	3
273	531767.09	1168480.73	3
274	531766.08	1168479.42	3
275	531749.35	1168452.40	3
276	531748.46	1168450.81	3
277	531780.27	1168494.26	3
278	531742.06	1168433.49	8
279	531790.15	1168506.03	3
280	531789.02	1168504.94	3
281	531735.74	1168419.88	8
282	531735.19	1168418.32	8
283	531814.42	1168525.60	3
284	531816.93	1168525.12	8
285	531726.42	1168384.56	8
286	531725.28	1168386.36	8
287	531724.81	1168384.88	8
288	531830.74	1168534.55	8
289	531829.56	1168532.58	8
290	531723.37	1168374.93	3
295	531845.42	1168544.63	8
296	531844.24	1168543.46	8
297	531842.75	1168539.93	8
299	531845.96	1168544.35	3
300	531865.90	1168551.44	8
301	531886.17	1168562.20	3
302	531887.52	1168561.62	3
303	531878.45	1168558.96	8
304	531877.93	1168558.00	8
305	531892.11	1168565.07	6
306	531893.45	1168564.50	6
307	531942.80	1168592.62	8
308	531944.00	1168592.09	8
309	531953.82	1168600.16	8
310	531954.99	1168599.65	8
311	531971.64	1168614.49	8
312	531972.75	1168614.02	8
313	531980.74	1168622.98	8
314	531981.84	1168622.51	8
315	531988.70	1168631.17	8
316	531989.77	1168630.70	8
317	531994.58	1168637.66	8
318	531995.61	1168637.18	8
319	531992.31	1168636.58	8
320	531990.96	1168635.13	8
321	532010.23	1168657.26	3
322	532011.26	1168656.80	3
323	532016.97	1168666.70	3
324	532017.99	1168666.25	3

325	532013.76	1168663.34	3
326	532012.40	1168661.34	3
327	532023.73	1168675.06	8
328	532024.29	1168675.99	8
329	532049.59	1168704.51	3
330	532036.06	1168701.90	6
331	532034.70	1168697.80	6
332	532032.20	1168690.28	6
333	532031.35	1168687.69	6
334	532038.81	1168703.36	3
335	532038.37	1168702.35	3
336	532048.33	1168704.41	6
337	532046.82	1168699.31	3
338	532070.55	1168761.23	3
339	531537.54	1168077.15	3
340	531538.28	1168077.97	3
341	531938.38	1168592.57	3
342	531966.53	1168613.04	3
343	532029.51	1168691.56	3
344	531697.07	1168290.91	3
345	531698.33	1168291.29	3
346	531721.04	1168367.82	3
347	531719.71	1168367.42	3

Přehled grafické části





1401/15

1401/14

1401/13

1401/9

6439/65

6439/1

1472

1042

1036

1506

1397

List 1

Q 1457/22

Q 1457/13

Q 1457/14

Q 1457/19

Q 1457/16

7751

2385-35

7747

19.60

2385-35

7745

19.39

10.77

10.56

11.19

10.96

17.39

7743

6478/21

2001-53

7743

13.1

10.88

10.88

10.88

10.88

10.88

10.88

10.88

10.88

10.88

10.88

10.88

10.88

10.88

10.88

10.88

10.88

10.88

1457/30

118.59

1457/33

1457/30

17.99

16.53

16.53

16.53

16.53

16.53

16.53

16.53

16.53

16.53

16.53

16.53

16.53

16.53

16.53

16.53

16.53

2385-21

10.79

10.79

10.79

10.79

10.79

10.79

10.79

10.79

10.79

10.79

10.79

10.79

10.79

10.79

10.79

10.79

10.79

10.79

11.79

11.79

11.79

11.79

11.79

11.79

11.79

11.79

11.79

11.79

11.79

11.79

11.79

11.79

11.79

11.79

11.79

11.79

11.10

11.10

11.10

11.10

11.10

11.10

11.10

11.10

11.10

11.10

11.10

11.10

11.10

11.10

11.10

11.10

11.10

11.10

7746

6478/24

11.10

11.10

11.10

11.10

11.10

11.10

11.10

11.10

11.10

11.10

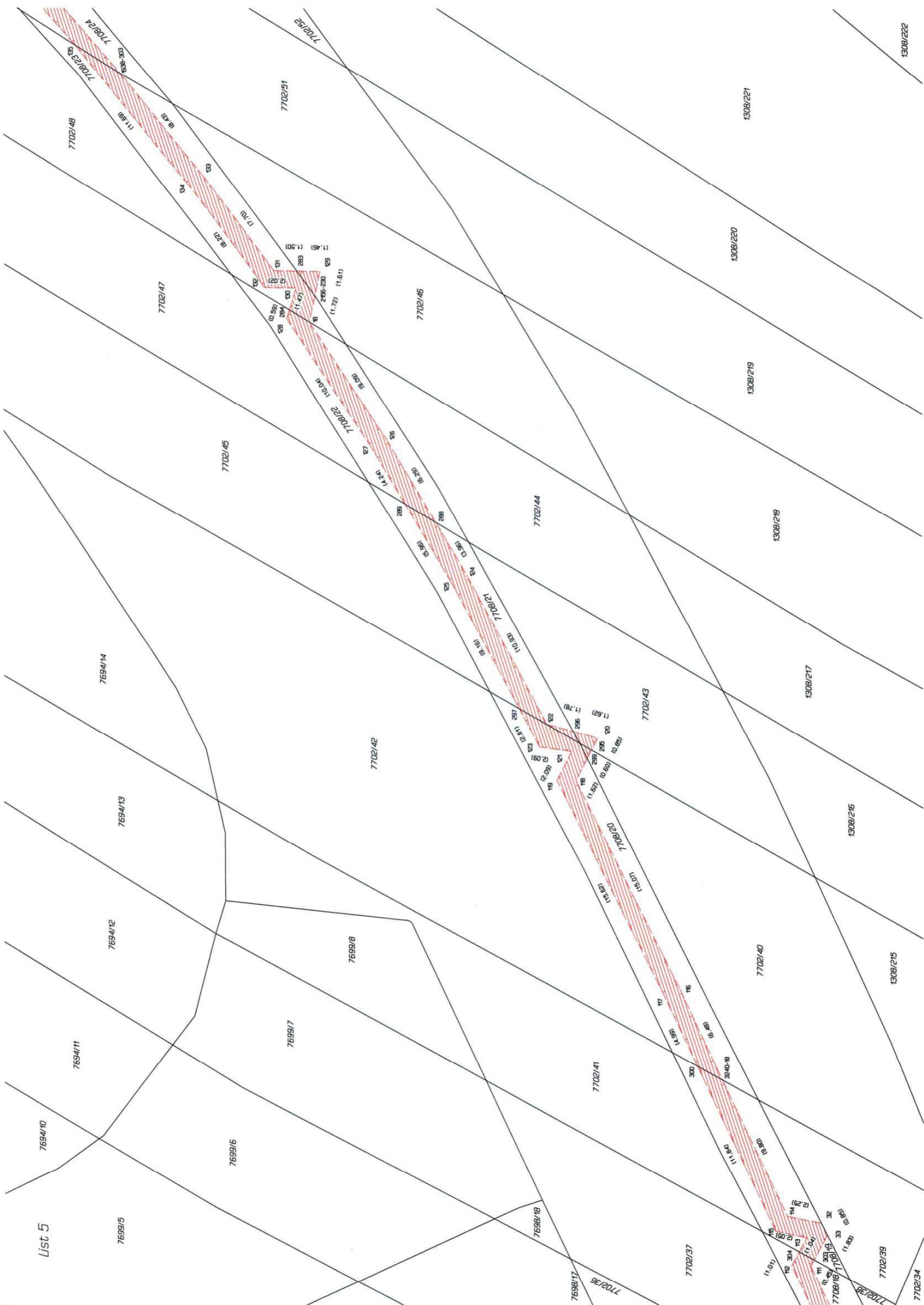
11.10

11.10

11.10

11.10

List 5



List 6

7654/14

7654/15

7654/16

7702/47

7702/48

7702/49

7702/53

1300/221

1300/222

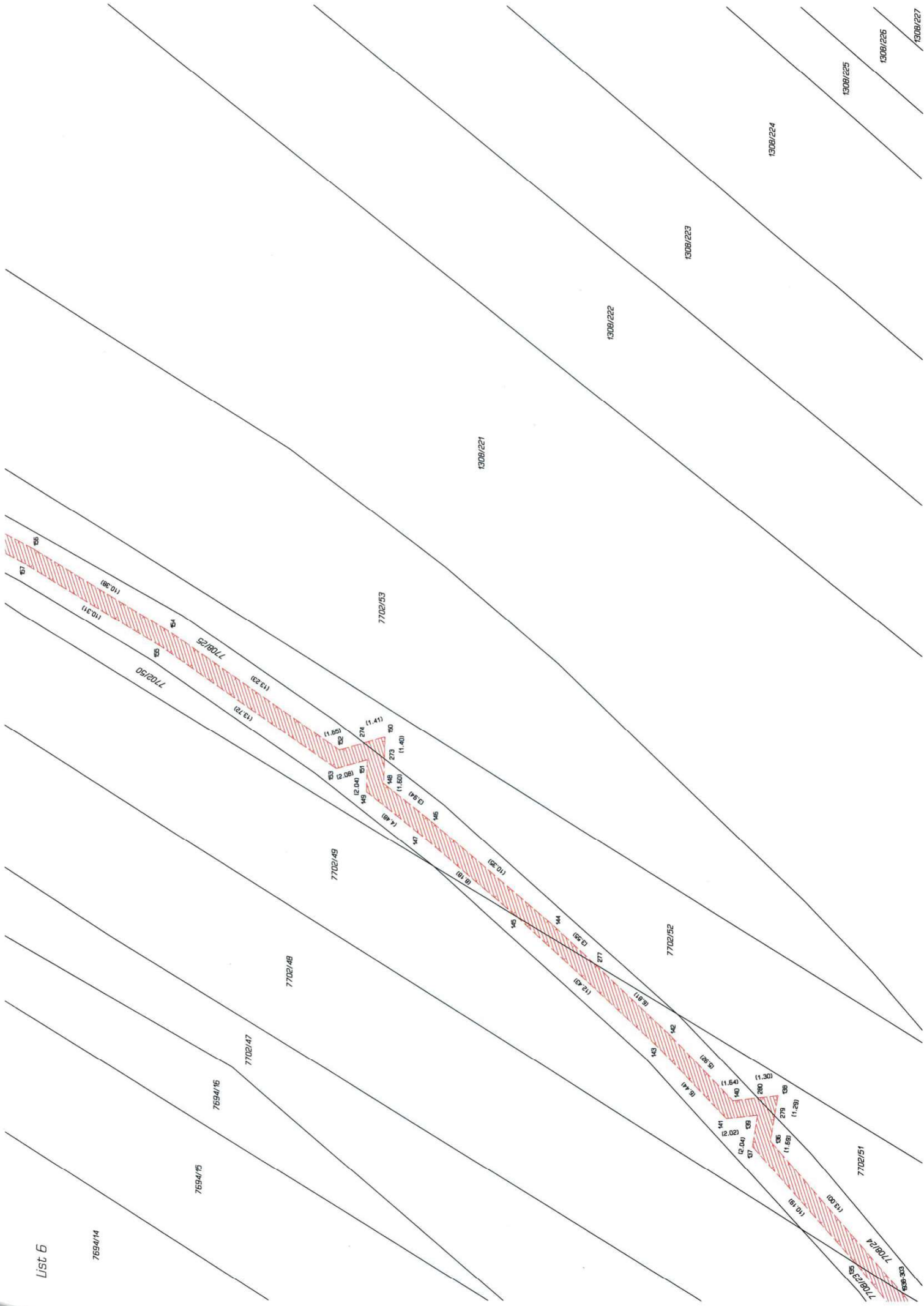
1300/223

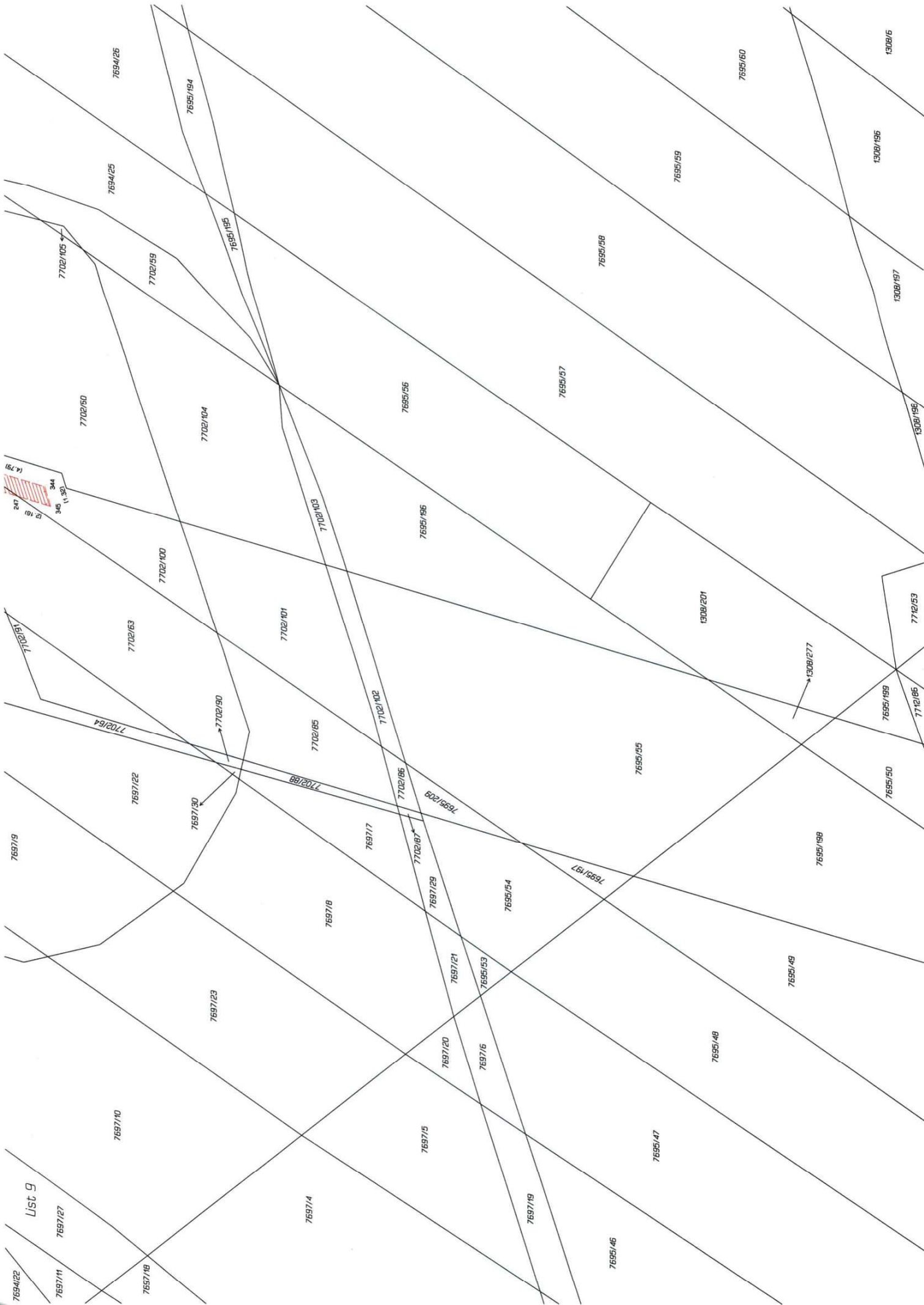
1300/224

1300/225

1300/226

1300/227





List 9

7694/22

7697/11

7697/10

7697/18

7697/23

7697/4

7697/5

7697/20

7697/6

7697/19

7695/46

7695/47

7695/48

7695/49

7695/198

7695/50

7695/199

7712/85

1308/277

1308/201

1308/196

1308/197

1308/195

1308/6

7695/60

7695/59

7695/58

7695/57

7695/56

7695/86

7702/103

7702/101

7702/85

7697/17

7702/86

7697/29

7702/87

7697/29

7695/64

7697/197

7697/21

7695/53

7702/50

7702/100

7702/63

7702/64

7697/22

7697/30

7702/90

7702/105

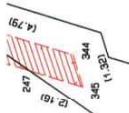
7702/59

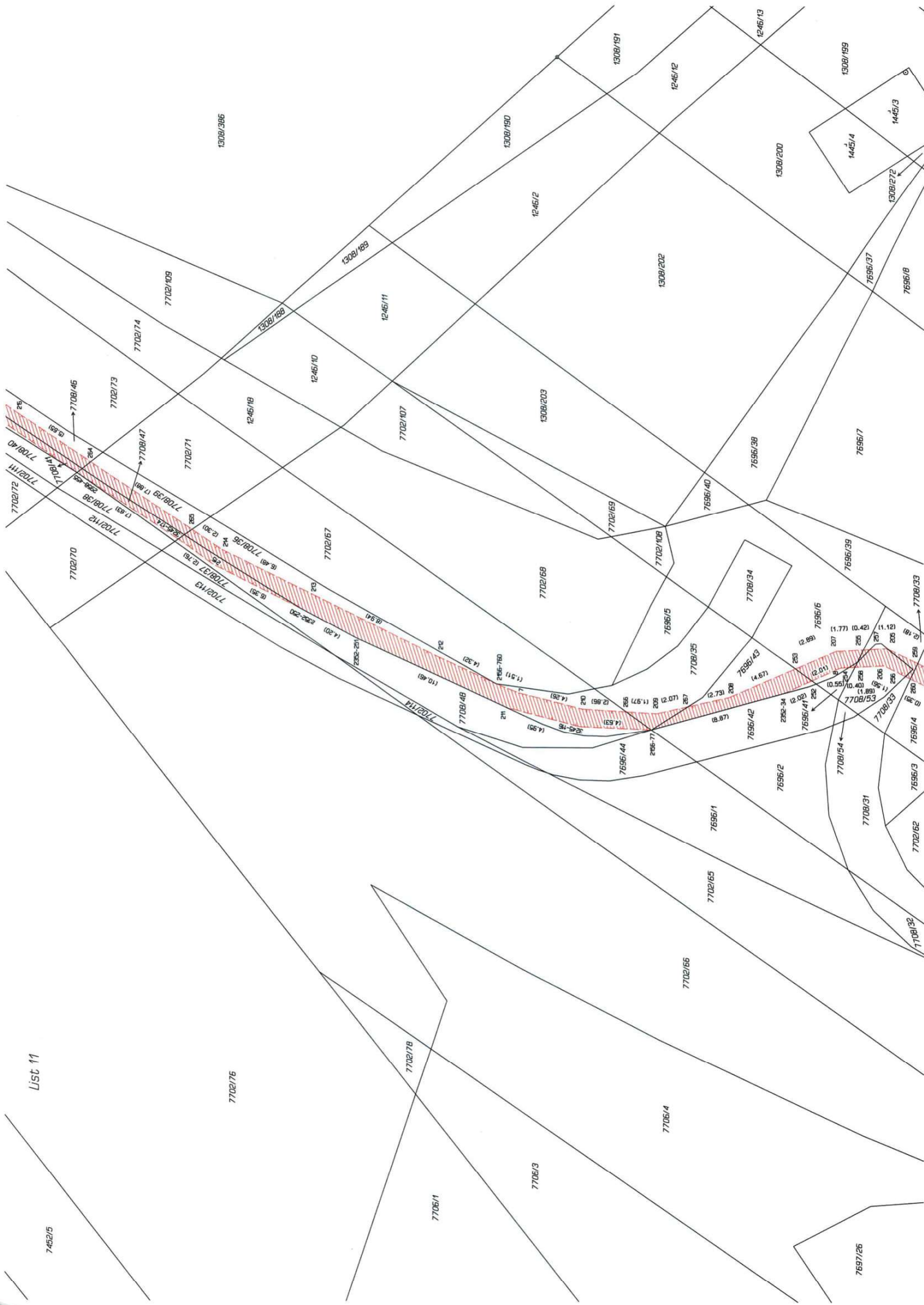
7702/104

7694/26

7695/194

7695/195





List 11

7452/5

7702/75

7702/78

7706/1

7706/3

7706/4

7702/65

7696/1

7696/2

7708/54

7708/31

7702/62

7708/33

7708/34

7708/35

7708/36

7708/37

7708/38

7708/39

7708/40

7708/41

7708/42

7708/43

7708/44

7708/45

7708/46

7708/47

7708/48

7708/49

7708/50

7708/51

7708/52

7708/53

7708/54

7708/55

7708/56

7708/57

7708/58

7708/59

7708/60

7708/61

7708/62

7708/63

7708/64

7708/65

7708/66

7708/67

7708/68

7708/69

7708/70

7708/71

7708/72

7708/73

7708/74

7708/75

7708/76

7708/77

7708/78

7708/79

7708/80

7708/81

7708/82

7708/83

7708/84

7708/85

7708/86

7708/87

7708/88

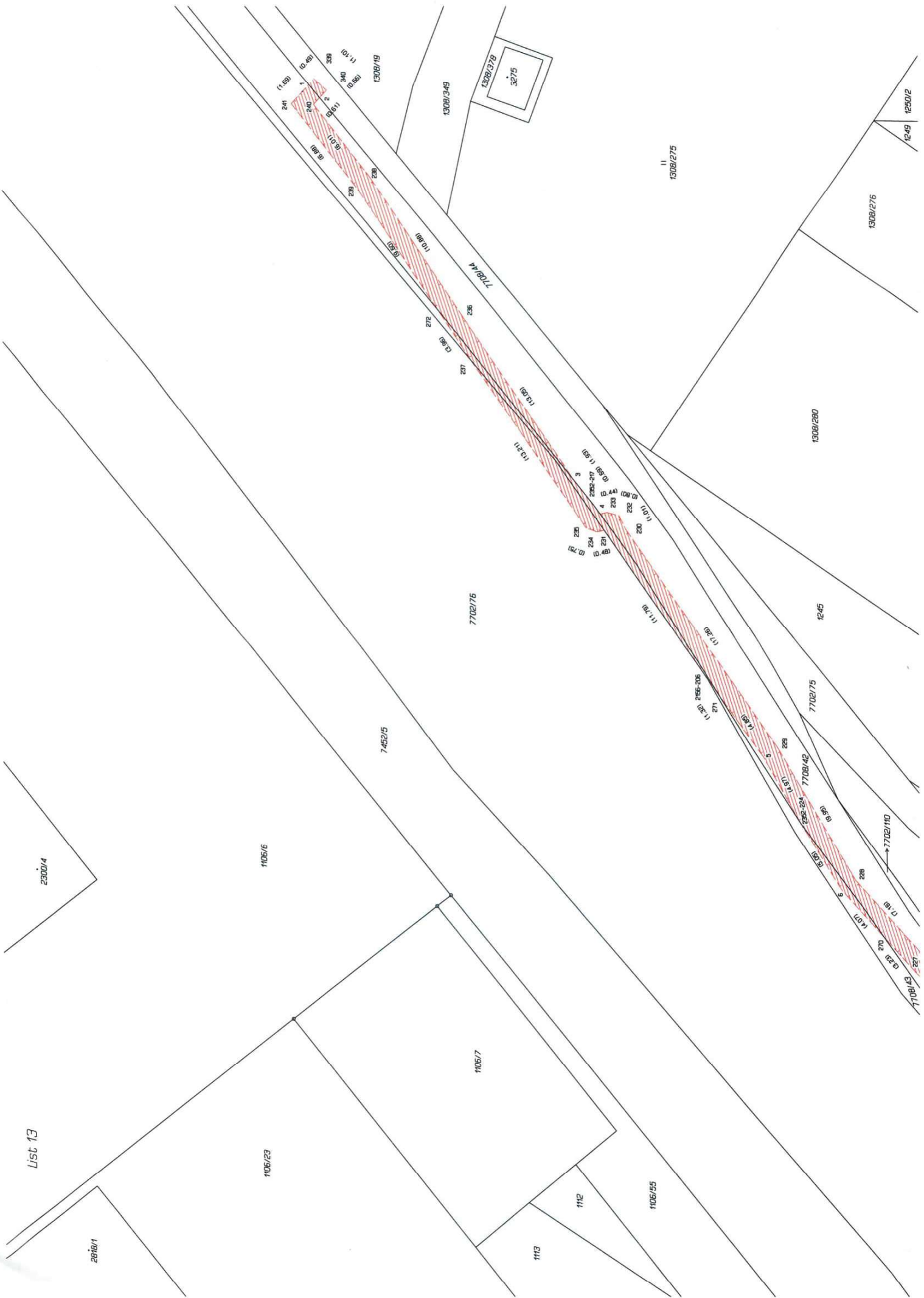
7708/89

7708/90

7708/91

7708/92

List 13



2818/1

1106/23

1106/6

7462/5

1106/7

1106/55

1112

1113

2300/4

1308/275

1308/275

1308/280

1245

7702/75

7702/42

7702/110

7708/43

7708/145

270

271

272

273

274

275

276

277

278

279

280

281

282

283

284

285

286

287

288

289

290

291

292

293

294

295

296

297

298

299

300

301

302

303

304

305

1308/378

3275

1308/349

1308/19

1308/19

1308/19

1308/19

1308/19

1308/19

1308/19

1308/19

1308/19

1308/19

1308/19

1308/19

1308/19

1308/19

1249

1250/2

1249

1249

1249

1249

1249

1249

1249

1249

1249

1249

1249

1249

1249

1249

1249

1249

1249