

VÝKAZ DOSAVADNÍHO A NOVÉHO STAVU ÚDAJŮ KATASTRU NEMOVITOSTÍ

Dosavadní stav			Nový stav												
Označení pozemku parc. číslem	Výměra parcely		Druh pozemku	Označení pozemku parc. číslem	Výměra parcely		Druh pozemku	Typ stavby	Způsob využití	Způsob určení výměr	Porovnání se stavem evidence právních vztahů				
	ha	m <sup>2</sup>			Způsob využití	Způsob využití					Díl přechází z pozemku označeného v katastru nemovitostí	dřívější poz. evidenci	Číslo listu vlastnictví	Výměra dílu	
				ha	m <sup>2</sup>							ha	m <sup>2</sup>		
3700/1											3700/1			10001	
3700/12											3700/12			10001	
3719/1											3719/1			10001	
3719/3											3719/3			10001	
7394/1											7394/1			10001	
7396/1											7396/1			10001	
7427/5											7427/5			10001	
7427/9											7427/9			10001	
7427/11											7427/11			10001	
7427/15											7427/15			6716	
7878/1											7878/1			10001	
7892/2											7892/2			10001	
8016/1											8016/1			10001	
8017/1											8017/1			10001	
8017/2											8017/2			10001	
8018											8018			10001	
8020/1											8020/1			10580	
8020/3											8020/3			10001	
8021/1											8021/1			10580	
8021/6											8021/6			10001	
8021/10											8021/10			10001	
8021/11											8021/11			10001	
8022											8022			10001	
8061/1											8061/1			10001	
8062/1											8062/1			10001	
8063/1											8063/1			10001	
8098/1											8098/1			11639	
8098/2											8098/2			10001	
8098/8											8098/8			10001	
8318/19											8318/19			6756	
8318/29											8318/29			6756	

Oprávněný: dle listin

Druh věcného břemene: dle listin

<b>GEOMETRICKÝ PLÁN pro</b> vymezení rozsahu věcného břemene k části pozemku	Geometrický plán ověřil úředně oprávněný zeměměřický inženýr:		Stejnopis ověřil úředně oprávněný zeměměřický inženýr:		
	Jméno, příjmení: Ing. Lenka Hollá		Jméno, příjmení: Ing. Petr Wagner		
	Číslo položky seznamu úředně oprávněných zeměměřických inženýrů: 2717/2015		Číslo položky seznamu úředně oprávněných zeměměřických inženýrů: 388/95		
	Dne: 25. března 2022      Číslo: 106/2022		Dne: 4.4.2022      Číslo: 1119/2022		
Máložitostní a přiznání odpovídá právním předpisům.		Tento stejnopis odpovídá geometrickému plánu v elektronické podobě uloženému v dokumentaci katastrálního úřadu.		Ověření stejnopisu geometrického plánu v listinné podobě.	
Vyhovitel: GK GEO 2007, s.r.o. Vrchní 1 63163 Velká Němčice IČO: 217 36 458		Katastrální úřad souhlasí s očisťováním parcel.		[Redacted Signature Area]	
Číslo plánu: 6989-526/2021 Okres: Prostějov Obec: Prostějov Kat. území: Prostějov Mapový list: Prostějov 3-7/24, 2-7/13, 14, 23 Dosavadním vlastníkům pozemků byla poskytnuta možnost seznámit se v terénu s průběhem navrhovaných nových hranic, které byly označeny předepsaným způsobem.		KÚ pro Olomoucký kraj KP Prostějov Ing. Kateřina Krajičková PGP-463/2022-709 2022.04.01 09:35:29 CEST		[Redacted Signature Area]	

**SEZNAM SOUŘADNIC (S-JTSK)**

Číslo bodu	Y	X	Kód kv.	Číslo bodu	Y	X	Kód kv.
397-1	557334.16	1134790.10	3	50	557463.61	1134720.74	3
1465-60	556786.58	1134661.92	3	51	557463.35	1134719.76	3
1757-98	557414.20	1134769.19	3	52	557458.46	1134723.24	3
2218-338	556892.76	1134647.38	3	53	557457.98	1134722.36	3
4479-2	557048.05	1134748.42	3	54	557452.29	1134726.93	3
4785-1	556758.23	1134666.14	3	55	557452.03	1134725.93	3
4910-22	557041.58	1134710.92	3	56	557451.46	1134726.91	3
5827-38	557187.35	1134847.45	3	57	557451.70	1134725.91	3
1	557556.87	1134697.31	3	58	557447.82	1134725.14	3
2	557558.10	1134696.15	3	59	557447.92	1134724.08	3
3	557557.34	1134695.49	3	60	557446.97	1134725.36	3
4	557556.53	1134696.25	3	61	557446.61	1134724.42	3
5	557555.59	1134697.14	3	62	557446.07	1134725.83	3
6	557556.07	1134696.20	3	63	557445.47	1134725.03	3
7	557552.62	1134694.10	6	64	557445.18	1134726.76	3
8	557553.29	1134693.35	6	65	557444.38	1134726.14	3
9	557548.46	1134690.47	3	66	557442.91	1134730.61	3
10	557549.12	1134689.73	3	67	557442.05	1134730.09	3
11	557540.66	1134683.31	3	68	557434.51	1134744.03	3
12	557541.44	1134682.67	3	69	557433.83	1134743.21	3
13	557537.60	1134678.52	3	70	557432.76	1134744.71	3
14	557537.86	1134677.06	3	71	557432.52	1134743.73	3
15	557534.80	1134680.68	3	72	557429.97	1134744.98	3
16	557534.26	1134679.84	3	73	557429.75	1134744.00	3
17	557531.11	1134682.67	3	74	557429.24	1134745.24	3
18	557530.60	1134681.81	3	75	557428.70	1134744.36	3
19	557527.33	1134684.72	3	76	557428.50	1134745.96	3
20	557526.89	1134683.82	3	77	557427.70	1134745.34	3
21	557522.33	1134686.93	3	78	557421.82	1134757.55	3
22	557521.91	1134686.03	3	79	557420.96	1134757.03	3
23	557517.73	1134689.19	3	80	557412.37	1134770.51	3
24	557517.27	1134688.31	3	81	557412.24	1134773.77	3
25	557513.37	1134691.67	3	82	557413.27	1134770.95	3
26	557512.83	1134690.83	3	83	557411.38	1134773.19	3
27	557512.11	1134692.55	3	84	557410.05	1134775.76	3
28	557511.93	1134691.46	3	85	557409.47	1134774.94	3
29	557511.27	1134692.28	3	86	557407.78	1134776.93	3
30	557509.01	1134688.74	3	87	557407.36	1134776.01	3
31	557509.87	1134688.24	3	88	557405.39	1134777.86	3
32	557508.12	1134687.12	3	89	557404.93	1134776.98	3
33	557508.80	1134686.28	3	90	557403.83	1134778.92	3
34	557507.01	1134686.80	3	91	557403.71	1134777.80	3
35	557506.97	1134685.74	3	92	557401.40	1134777.94	3
36	557506.68	1134686.93	3	93	557401.74	1134777.00	3
37	557506.18	1134686.05	3	94	557386.11	1134772.94	3
38	557491.37	1134699.11	3	95	557386.55	1134772.04	3
39	557490.75	1134698.33	3	96	557385.42	1134772.47	3
40	557483.50	1134705.21	3	97	557386.21	1134771.62	3
41	557482.88	1134704.43	3	98	557385.19	1134771.66	3
42	557476.67	1134710.89	3	99	557386.10	1134767.29	3
43	557476.03	1134710.13	3	100	557387.08	1134767.51	3
44	557470.37	1134716.40	3	101	557387.50	1134761.48	3
45	557469.73	1134715.64	3	102	557388.48	1134761.64	3
46	557465.74	1134720.26	3	103	557387.65	1134759.86	3
47	557465.22	1134719.40	3	104	557388.65	1134759.88	3
48	557464.78	1134720.67	3	105	557387.40	1134754.58	3
49	557464.54	1134719.69	3	106	557388.38	1134754.34	3

**SEZNAM SOUŘADNIC (S-JTSK)**

Číslo bodu	Y	X	Kód kv.	Číslo bodu	Y	X	Kód kv.
107	557386.47	1134752.50	3	164	557320.33	1134798.28	3
108	557387.37	1134752.06	3	165	557313.82	1134801.93	3
109	557380.54	1134741.03	3	166	557313.46	1134801.01	3
110	557381.22	1134740.17	3	167	557300.14	1134807.40	3
111	557380.17	1134740.94	3	168	557299.78	1134806.46	3
112	557380.17	1134739.92	3	169	557287.64	1134811.83	3
113	557376.72	1134741.78	3	170	557287.30	1134810.89	3
114	557376.54	1134740.80	3	171	557272.12	1134817.27	3
115	557372.45	1134742.37	3	172	557271.80	1134816.33	3
116	557372.37	1134741.37	3	173	557261.32	1134820.98	3
117	557360.76	1134742.87	3	174	557260.96	1134820.04	3
118	557360.70	1134741.87	3	175	557257.72	1134822.51	3
119	557354.65	1134743.39	3	176	557257.62	1134821.47	3
120	557354.59	1134742.39	3	177	557256.38	1134822.24	3
121	557351.68	1134743.49	3	178	557256.62	1134821.26	3
122	557351.62	1134742.49	3	179	557254.94	1134821.81	3
123	557339.61	1134744.75	3	180	557255.04	1134820.79	3
124	557339.55	1134743.75	3	181	557253.46	1134821.94	3
125	557338.38	1134744.76	3	182	557253.28	1134820.96	3
126	557338.30	1134743.76	3	183	557251.81	1134822.39	3
127	557335.18	1134745.21	3	184	557251.35	1134821.47	3
128	557334.60	1134744.29	3	185	557250.57	1134823.37	3
129	557335.04	1134745.43	3	186	557250.01	1134822.55	3
130	557333.98	1134745.21	3	187	557248.33	1134824.68	3
131	557338.05	1134761.02	3	188	557247.91	1134823.76	3
132	557337.03	1134761.06	3	189	557243.94	1134826.26	3
133	557337.83	1134762.95	3	190	557243.58	1134825.32	3
134	557336.83	1134762.97	3	191	557235.92	1134829.41	3
135	557338.05	1134764.46	3	192	557235.54	1134828.49	3
136	557337.05	1134764.54	3	193	557224.12	1134834.23	3
137	557338.07	1134765.97	3	194	557223.70	1134833.31	3
138	557337.07	1134765.93	3	195	557222.02	1134835.29	3
139	557337.24	1134773.58	3	196	557221.48	1134834.43	3
140	557336.24	1134773.58	3	197	557219.55	1134837.17	3
141	557337.34	1134774.51	3	198	557219.07	1134836.27	3
142	557336.36	1134774.71	3	199	557218.20	1134837.62	3
143	557339.68	1134781.82	3	200	557218.08	1134836.60	3
144	557338.70	1134782.04	3	201	557216.41	1134837.45	3
145	557339.91	1134783.38	3	202	557216.31	1134836.43	3
146	557338.91	1134783.42	3	203	557213.42	1134838.32	3
147	557339.76	1134786.03	6	204	557213.10	1134837.38	3
148	557338.79	1134785.58	3	205	557202.62	1134842.50	3
149	557339.00	1134787.53	3	206	557202.20	1134841.58	3
150	557338.01	1134787.30	6	207	557200.47	1134843.63	3
151	557336.65	1134789.32	3	208	557200.05	1134842.71	3
152	557334.21	1134790.76	3	209	557195.79	1134845.42	3
153	557331.48	1134791.98	3	210	557195.43	1134844.48	3
154	557330.55	1134791.38	3	211	557187.60	1134848.40	3
155	557329.15	1134793.39	3	212	557181.41	1134850.35	3
156	557328.67	1134792.51	3	213	557181.11	1134849.39	3
157	557327.57	1134794.18	3	214	557177.28	1134851.70	3
158	557327.03	1134793.32	3	215	557176.94	1134850.76	3
159	557326.99	1134794.61	3	216	557175.21	1134852.57	3
160	557326.35	1134793.85	3	217	557174.85	1134851.63	3
161	557323.64	1134797.78	3	218	557168.18	1134855.00	3
162	557323.06	1134796.94	3	219	557167.84	1134854.06	3
163	557320.73	1134799.20	3	220	557161.57	1134857.37	3

## SEZNAM SOUŘADNIC (S-JTSK)

Číslo bodu	Y	X	Kód kv.	Číslo bodu	Y	X	Kód kv.
221	557161.27	1134856.41	3	278	557045.57	1134822.22	3
222	557155.58	1134859.04	3	279	557046.61	1134822.04	3
223	557155.28	1134858.08	3	280	557046.08	1134618.78	3
224	557146.98	1134862.18	3	281	557047.06	1134818.94	3
225	557146.62	1134861.24	3	282	557047.08	1134813.27	3
226	557139.23	1134865.48	3	283	557048.06	1134813.45	3
227	557138.87	1134864.54	3	284	557048.99	1134803.83	3
228	557133.52	1134867.44	3	285	557049.97	1134803.99	3
229	557133.24	1134866.48	3	286	557049.66	1134798.27	3
230	557123.61	1134869.98	3	287	557050.66	1134798.37	3
231	557123.41	1134869.00	3	288	557050.10	1134792.80	3
232	557122.81	1134869.83	3	289	557051.10	1134792.84	3
233	557122.57	1134869.56	3	290	557050.11	1134789.34	3
234	557122.94	1134868.47	3	291	557051.11	1134789.52	3
235	557122.02	1134869.39	3	292	557050.43	1134788.43	3
236	557121.88	1134868.37	3	293	557051.29	1134788.99	3
237	557111.35	1134873.60	3	294	557051.99	1134786.95	3
238	557108.93	1134873.47	3	295	557052.77	1134787.59	3
239	557082.83	1134883.86	3	296	557052.32	1134786.41	3
240	557092.78	1134879.51	3	297	557053.30	1134786.73	3
241	557083.66	1134882.68	3	298	557052.79	1134779.50	3
242	557081.35	1134884.15	3	299	557053.79	1134779.48	3
243	557081.23	1134883.15	3	300	557052.58	1134777.59	3
244	557076.29	1134884.45	3	301	557053.56	1134777.35	3
245	557076.23	1134883.45	3	302	557052.08	1134776.35	3
246	557063.72	1134885.35	3	303	557052.92	1134775.73	3
247	557063.80	1134884.35	3	304	557051.02	1134775.48	3
248	557062.21	1134884.99	3	305	557051.72	1134774.76	3
249	557062.51	1134884.03	3	306	557049.84	1134774.16	3
250	557058.99	1134883.81	3	307	557050.76	1134773.70	3
251	557059.35	1134882.87	3	308	557049.58	1134772.83	3
252	557050.99	1134880.44	3	309	557050.58	1134772.73	3
253	557051.39	1134879.52	3	310	557049.61	1134765.59	3
254	557034.54	1134873.18	3	311	557050.61	1134765.57	3
255	557034.96	1134872.27	3	312	557049.55	1134764.36	3
256	557033.94	1134872.72	3	313	557050.55	1134764.36	3
257	557034.05	1134871.84	3	314	557049.59	1134763.29	3
258	557036.60	1134866.04	3	315	557050.59	1134763.21	3
259	557037.50	1134866.46	3	316	557048.77	1134759.18	3
260	557039.93	1134859.42	3	317	557049.75	1134759.02	3
261	557040.87	1134859.78	3	318	557048.33	1134754.76	3
262	557040.60	1134857.11	3	319	557049.29	1134754.72	3
263	557041.56	1134857.35	3	320	557048.35	1134753.13	3
264	557041.61	1134852.58	3	321	557049.35	1134753.13	3
265	557042.59	1134852.78	3	322	557048.19	1134748.92	3
266	557042.92	1134845.36	3	323	557049.19	1134748.66	3
267	557043.90	1134845.58	3	324	557048.83	1134747.99	3
268	557043.65	1134842.55	3	325	557047.11	1134747.43	3
269	557044.59	1134842.87	3	326	557047.97	1134746.91	3
270	557044.15	1134841.41	3	327	557046.77	1134746.63	3
271	557045.11	1134841.69	3	328	557047.73	1134746.35	3
272	557046.76	1134824.05	3	329	557045.33	1134737.61	3
273	557047.78	1134824.03	3	330	557046.27	1134737.46	3
274	557046.69	1134823.69	3	331	557044.70	1134727.88	3
275	557047.61	1134823.19	3	332	557043.55	1134719.93	3
276	557045.98	1134823.00	3	333	557043.13	1134717.38	3
277	557046.80	1134822.40	3	334	557042.55	1134713.05	3

### SEZNAM SOUŘADNIC (S-JTSK)

Číslo bodu	Y	X	Kód kv.	Číslo bodu	Y	X	Kód kv.
335	557042.37	1134711.84	3	392	557020.12	1134611.26	3
336	557041.77	1134710.26	3	393	557020.44	1134610.32	3
337	557042.79	1134710.30	3	394	557018.52	1134610.50	3
338	557041.56	1134709.21	3	395	557018.56	1134609.52	3
339	557042.62	1134709.37	3	396	557013.50	1134612.36	3
340	557041.93	1134708.55	3	397	557013.18	1134611.42	3
341	557042.89	1134708.88	3	398	557009.00	1134613.81	3
342	557042.92	1134708.42	3	399	557008.56	1134612.91	3
343	557039.88	1134694.69	3	400	557008.18	1134614.38	3
344	557040.88	1134694.57	3	401	557007.66	1134613.52	3
345	557039.73	1134692.70	3	402	557006.24	1134615.38	3
346	557040.73	1134692.70	3	403	557005.88	1134614.44	3
347	557039.85	1134691.30	3	404	557003.13	1134616.14	3
348	557040.85	1134691.26	3	405	557002.85	1134615.18	3
349	557034.82	1134657.68	3	406	557000.26	1134617.13	3
350	557035.82	1134657.66	3	407	556999.98	1134616.17	3
351	557034.92	1134656.71	3	408	556999.37	1134617.33	3
352	557035.92	1134656.69	3	409	556999.19	1134616.35	3
353	557034.34	1134652.59	3	410	556997.28	1134617.60	3
354	557035.32	1134652.45	3	411	556997.02	1134616.62	3
355	557032.37	1134639.91	3	412	556996.32	1134617.99	3
356	557033.39	1134639.95	3	413	556995.98	1134617.05	3
357	557032.79	1134638.25	3	414	556994.05	1134618.75	3
358	557033.81	1134638.31	3	415	556993.71	1134617.81	3
359	557032.70	1134637.61	3	416	556989.02	1134620.62	3
360	557033.66	1134637.23	3	417	556988.68	1134619.68	3
361	557032.03	1134636.97	3	418	556980.80	1134623.49	3
362	557033.18	1134636.57	3	419	556980.52	1134622.53	3
363	557032.61	1134636.15	3	420	556977.88	1134624.18	3
364	557029.13	1134635.03	3	421	556977.54	1134623.24	3
365	557029.85	1134634.31	3	422	556974.79	1134625.78	3
366	557028.58	1134634.18	3	423	556974.46	1134624.82	3
367	557029.52	1134633.80	3	424	556971.95	1134626.39	3
368	557028.29	1134632.55	3	425	556971.59	1134625.43	3
369	557029.25	1134632.27	3	426	556969.32	1134627.93	3
370	557027.14	1134629.80	3	427	556968.96	1134626.97	3
371	557028.14	1134629.58	3	428	556966.41	1134628.47	3
372	557027.07	1134627.49	3	429	556966.19	1134627.49	3
373	557028.07	1134627.31	3	430	556964.07	1134629.08	3
374	557026.46	1134625.78	3	431	556963.77	1134628.12	3
375	557027.42	1134625.50	3	432	556958.99	1134630.67	3
376	557025.89	1134623.03	3	433	556958.80	1134629.88	3
377	557026.87	1134622.79	3	434	556955.90	1134631.31	3
378	557024.96	1134619.65	3	435	556955.68	1134630.33	3
379	557025.94	1134619.43	3	436	556952.41	1134632.33	3
380	557024.68	1134618.13	3	437	556946.91	1134632.90	3
381	557025.62	1134617.69	3	438	556933.04	1134636.45	3
382	557023.78	1134617.01	3	439	556931.23	1134637.67	3
383	557024.68	1134616.53	3	440	556931.85	1134636.84	3
384	557022.86	1134614.03	3	441	556930.98	1134637.58	3
385	557023.80	1134613.65	3	442	556931.02	1134636.52	3
386	557022.40	1134613.12	3	443	556928.72	1134638.31	3
387	557023.40	1134612.88	3	444	556928.37	1134637.33	3
388	557022.39	1134612.03	3	445	556926.97	1134639.53	3
389	557023.39	1134611.57	3	446	556926.59	1134638.57	3
390	557022.16	1134611.83	3	447	556922.86	1134640.13	3
391	557022.64	1134610.93	3	448	556922.82	1134639.13	3

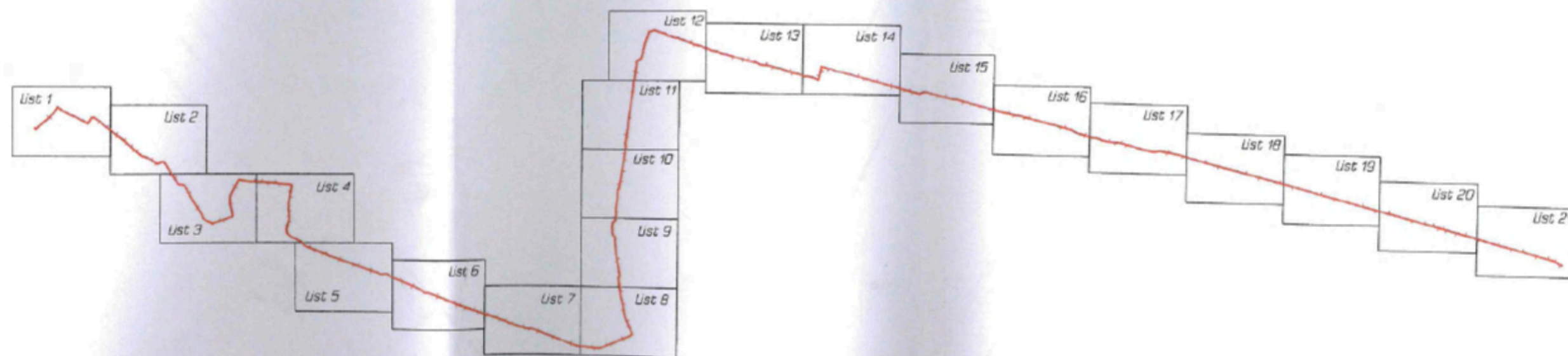
**SEZNAM SOUŘADNIC (S-JTSK)**

Číslo bodu	Y	X	Kód kv.	Číslo bodu	Y	X	Kód kv.
449	556921.70	1134640.08	3	506	556777.54	1134661.82	3
450	556921.30	1134639.06	3	507	556776.94	1134662.71	3
451	556915.59	1134641.28	3	508	556777.05	1134661.72	3
452	556915.33	1134640.32	3	509	556775.13	1134662.89	3
453	556912.85	1134642.22	3	510	556758.41	1134666.91	3
454	556912.59	1134641.26	3	511	556755.05	1134667.35	3
455	556909.11	1134643.01	3	512	556758.18	1134665.94	3
456	556908.99	1134642.01	3	513	556754.95	1134666.35	3
457	556907.80	1134643.06	3	514	556753.99	1134667.42	3
458	556907.60	1134642.06	3	515	556753.83	1134666.42	3
459	556906.97	1134643.36	3	516	556714.88	1134677.16	3
460	556906.59	1134642.44	3	517	556714.68	1134676.18	3
461	556904.71	1134644.36	3	518	556709.31	1134678.09	3
462	556904.32	1134643.44	3	519	556709.11	1134677.11	3
463	556891.42	1134646.58	3	520	556701.80	1134679.85	3
464	556890.25	1134648.16	3	521	556701.72	1134678.85	3
465	556889.83	1134647.26	3	522	556699.90	1134679.73	3
466	556888.21	1134649.22	3	523	556699.82	1134678.73	3
467	556888.01	1134648.20	3	524	556653.16	1134691.13	3
468	556885.88	1134648.97	3	525	556652.80	1134690.19	3
469	556885.82	1134647.95	3	526	556648.02	1134693.86	3
470	556880.58	1134650.14	3	527	556647.64	1134692.92	3
471	556880.28	1134649.18	3	528	556635.48	1134697.32	3
472	556878.17	1134651.10	3	529	556635.30	1134696.34	3
473	556877.69	1134650.22	3	530	556631.11	1134697.65	3
474	556876.90	1134652.02	3	531	556630.87	1134696.67	3
475	556876.24	1134651.26	3	532	556627.24	1134699.35	3
476	556875.87	1134652.43	3	533	556626.92	1134698.39	3
477	556875.34	1134651.79	3	534	556621.76	1134700.67	3
478	556872.63	1134640.94	3	535	556621.62	1134699.67	3
479	556873.53	1134640.44	3	536	556615.09	1134701.01	3
480	556873.15	1134640.14	3	537	556615.01	1134700.01	3
481	556836.17	1134650.34	3	538	556611.92	1134701.32	3
482	556819.34	1134653.63	3	539	556611.76	1134700.34	3
483	556819.86	1134654.49	3	540	556604.45	1134703.15	3
484	556818.73	1134654.99	3	541	556604.21	1134702.17	3
485	556818.41	1134654.05	3	542	556601.53	1134703.85	3
486	556807.67	1134657.81	3	543	556601.27	1134702.89	3
487	556807.41	1134656.85	3	544	556598.86	1134704.61	3
488	556799.98	1134660.08	3	545	556598.60	1134703.65	3
489	556799.72	1134659.12	3	546	556594.58	1134705.77	3
490	556791.06	1134662.25	3	547	556594.34	1134704.79	3
491	556790.82	1134661.29	3	548	556588.97	1134707.04	3
492	556787.64	1134663.18	3	549	556588.75	1134706.06	3
493	556787.66	1134662.14	3	550	556586.12	1134707.67	3
494	556786.85	1134662.92	3	551	556585.90	1134706.69	3
495	556787.06	1134661.80	3	552	556584.89	1134707.93	3
496	556785.02	1134661.70	3	553	556584.73	1134706.95	3
497	556786.47	1134661.47	3	554	556583.35	1134708.10	3
498	556785.42	1134660.78	3	555	556583.29	1134707.10	3
499	556783.06	1134661.22	3	556	556580.41	1134708.11	3
500	556783.28	1134660.25	3	557	556580.51	1134707.11	3
501	556781.82	1134661.30	3	558	556577.38	1134707.52	3
502	556778.31	1134661.42	3	559	556577.46	1134706.52	3
503	556779.30	1134661.90	3	560	556576.07	1134707.55	3
504	556778.67	1134662.36	3	561	556575.97	1134706.55	3
505	556777.68	1134662.86	3	562	556563.21	1134709.84	3

### SEZNAM SOUŘADNIC (S-JTSK)

Číslo bodu	Y	X	Kód kv.	Číslo bodu	Y	X	Kód kv.
563	556562.99	1134708.86	3	621	557027.28	1134624.82	6
564	556531.76	1134718.03	3	622	556873.03	1134642.54	3
565	556531.52	1134717.07	3	623	556874.00	1134642.29	3
566	556496.82	1134726.62	3	624	556785.67	1134662.14	3
567	556496.58	1134725.64	3	625	556886.30	1134649.01	3
568	556466.78	1134734.04	3	626	556878.38	1134651.02	3
569	556466.54	1134733.08	3	627	557032.70	1134638.63	6
570	556431.01	1134743.22	3	628	557033.72	1134638.66	6
571	556430.77	1134742.26	3	629	557052.44	1134784.68	6
572	556394.76	1134752.49	3	630	557053.44	1134784.68	6
573	556394.52	1134751.53	3	631	557023.01	1134614.49	6
574	556340.82	1134766.14	3	632	557023.98	1134614.24	6
575	556340.56	1134765.18	3	633	557529.97	1134683.29	3
576	556334.14	1134767.99	3	634	557529.52	1134682.39	3
577	556333.88	1134767.03	3	635	556613.58	1134701.16	3
578	556325.05	1134770.19	3	636	556613.43	1134700.17	3
579	556324.81	1134769.23	3	637	556581.91	1134708.10	3
580	556306.00	1134775.26	3	638	556581.76	1134707.11	3
581	556305.74	1134774.30	3	639	557028.07	1134632.03	6
582	556277.73	1134782.58	3	640	557029.05	1134631.79	6
583	556277.49	1134781.62	3	641	556874.76	1134649.46	3
584	556256.16	1134787.96	3	642	556875.73	1134649.21	3
585	556255.90	1134787.00	3				
586	556234.62	1134793.74	3				
587	556234.22	1134792.80	3				
588	556229.19	1134796.96	3				
589	556228.81	1134796.02	3				
590	556227.82	1134797.27	3				
591	556227.96	1134796.21	3				
593	557343.30	1134744.36	3				
594	557343.14	1134743.38	3				
595	557125.87	1134868.37	3				
596	557073.15	1134884.68	3				
597	557073.08	1134883.68	3				
598	557047.83	1134879.04	3				
599	557048.21	1134878.12	3				
600	557025.49	1134621.57	6				
601	557026.46	1134621.33	6				
602	557037.18	1134874.34	3				
603	557037.58	1134873.43	3				
604	557332.52	1134791.52	3				
605	557368.77	1134742.53	6				
606	557368.62	1134741.53	6				
607	557390.86	1134774.50	3				
608	557391.17	1134773.54	3				
609	557388.78	1134773.82	3				
610	557389.08	1134772.86	3				
611	557399.71	1134777.39	3				
612	557400.15	1134776.48	3				
613	557413.14	1134769.30	3				
614	557419.85	1134760.56	3				
615	557419.13	1134759.90	3				
616	557519.69	1134688.23	3				
617	557519.25	1134687.33	3				
618	557533.14	1134681.57	3				
619	557532.64	1134680.71	3				
620	557026.31	1134625.07	6				

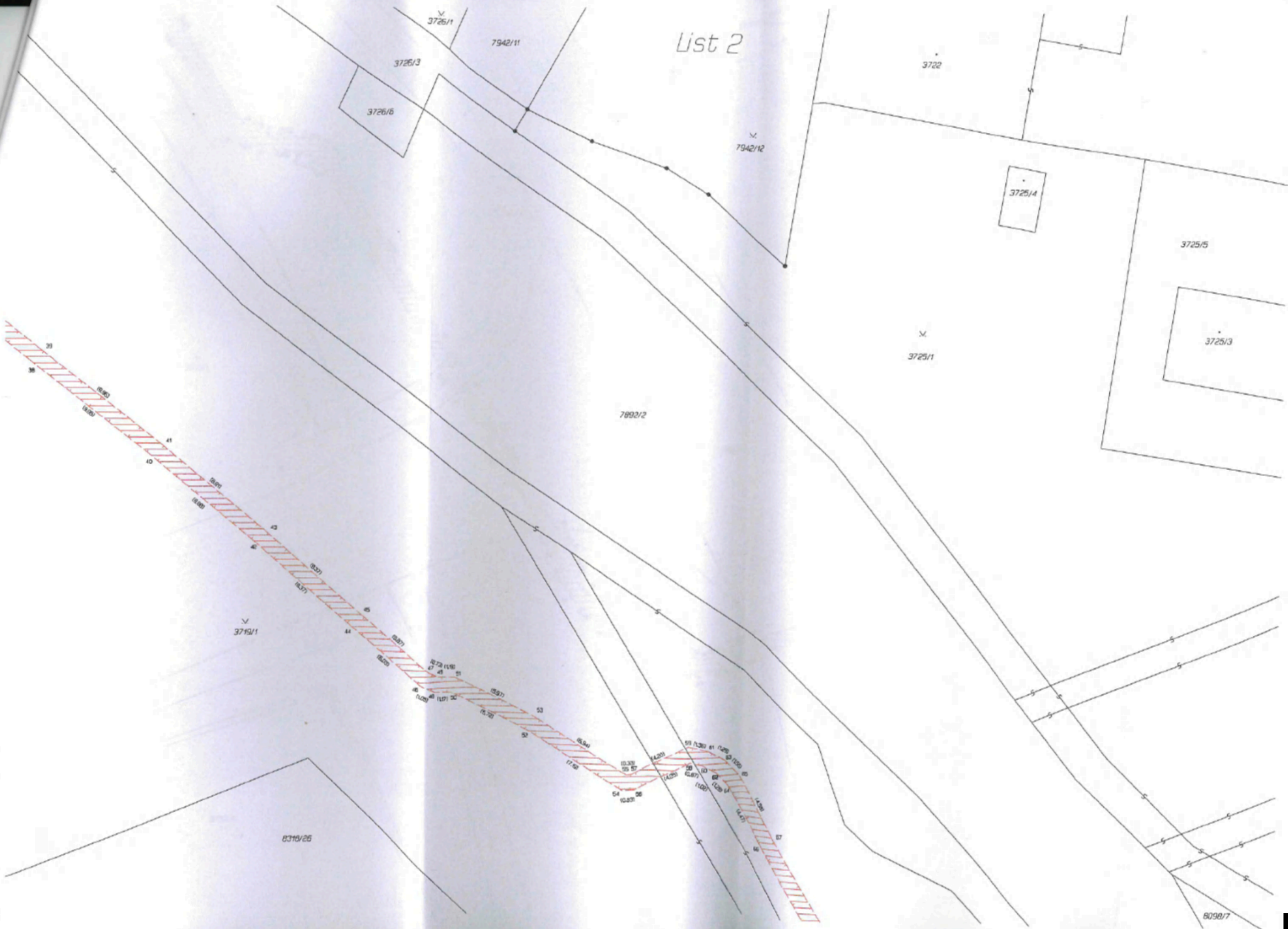
Přehled grafické části:



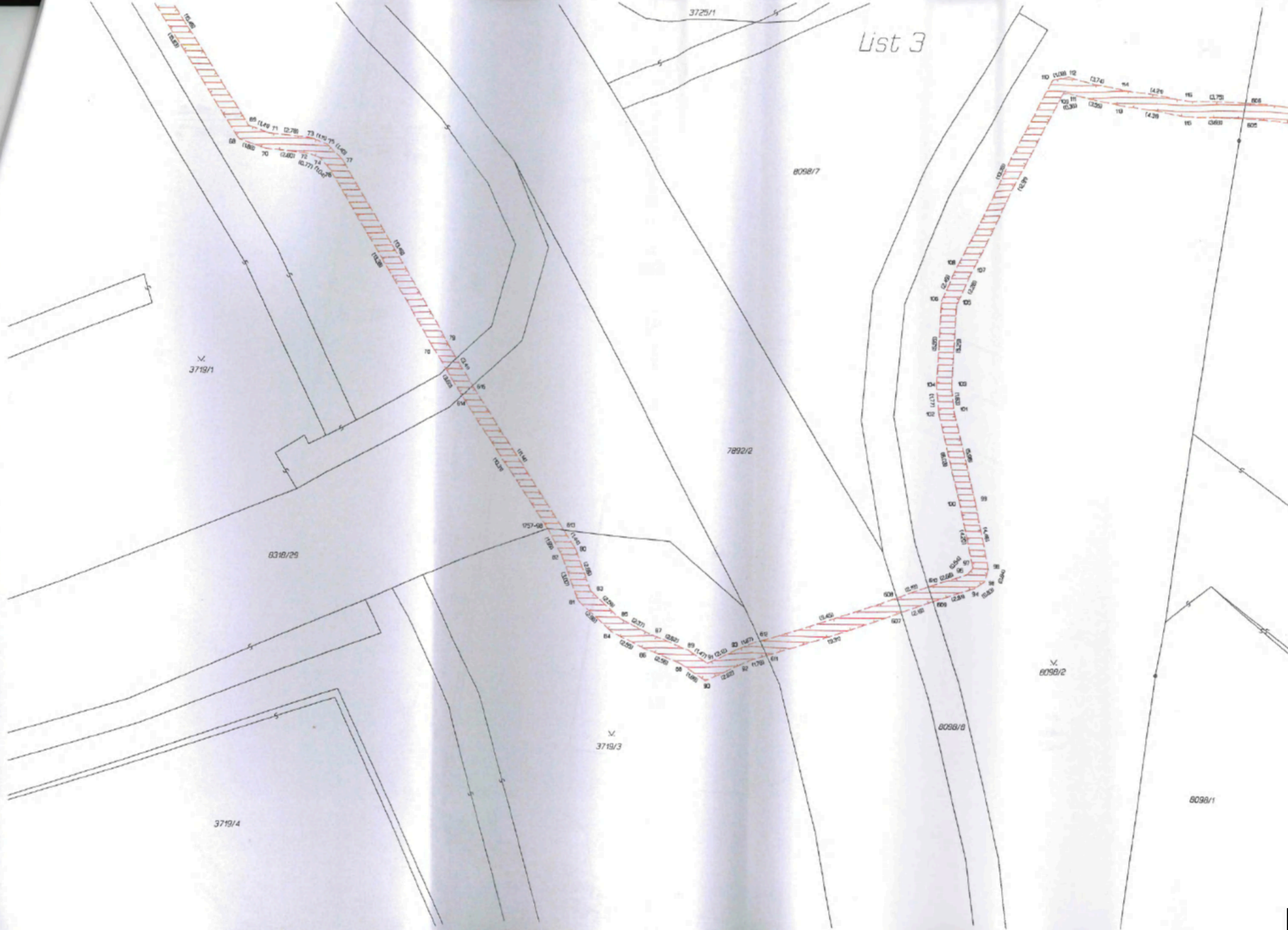




List 2



List 3



List 4



8098/1

8016/1

7398/6

7398/4

7399/11

7399/1

7399/1

7399/2

7399/3

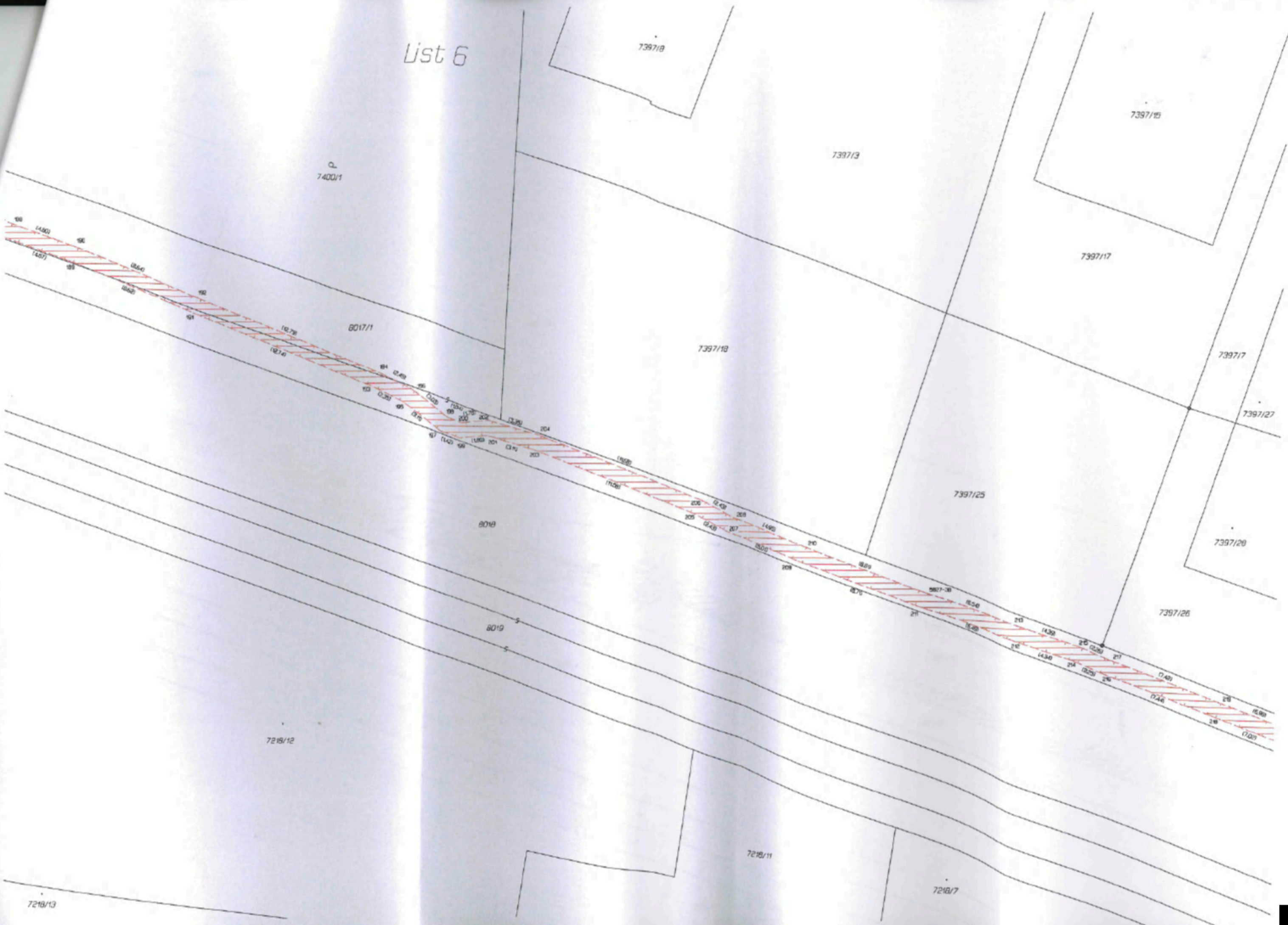
8018

8019

8017/1



List 6



7397/8

7397/15

7400/1

7397/3

7397/17

8017/1

7397/18

7397/7

7397/27

7397/25

8018

7397/20

7397/26

8019

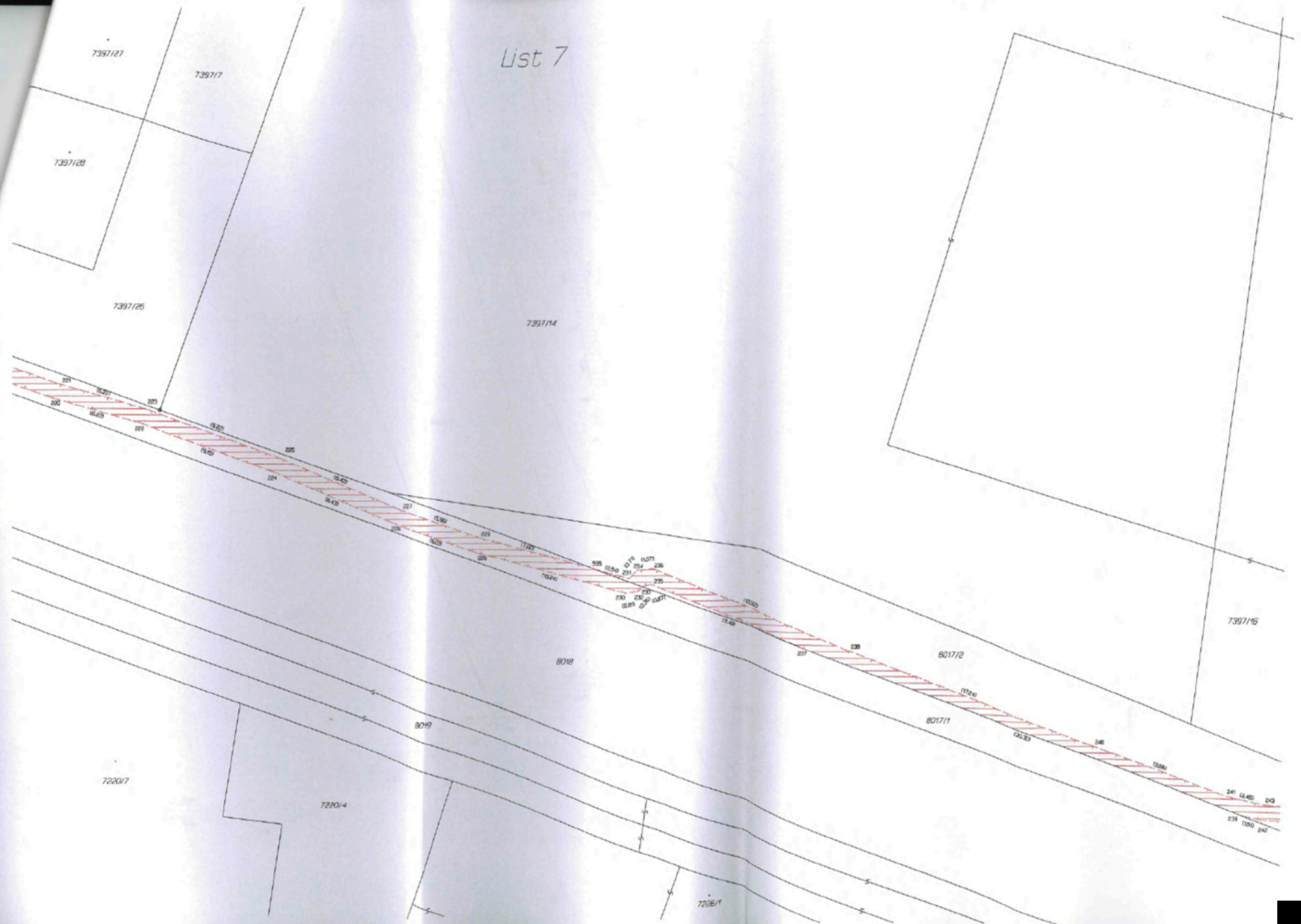
7218/12

7218/11

7218/7

7218/13

List 7



7397/21

7397/17

7397/28

7397/25

7397/14

7397/16

8018

8019

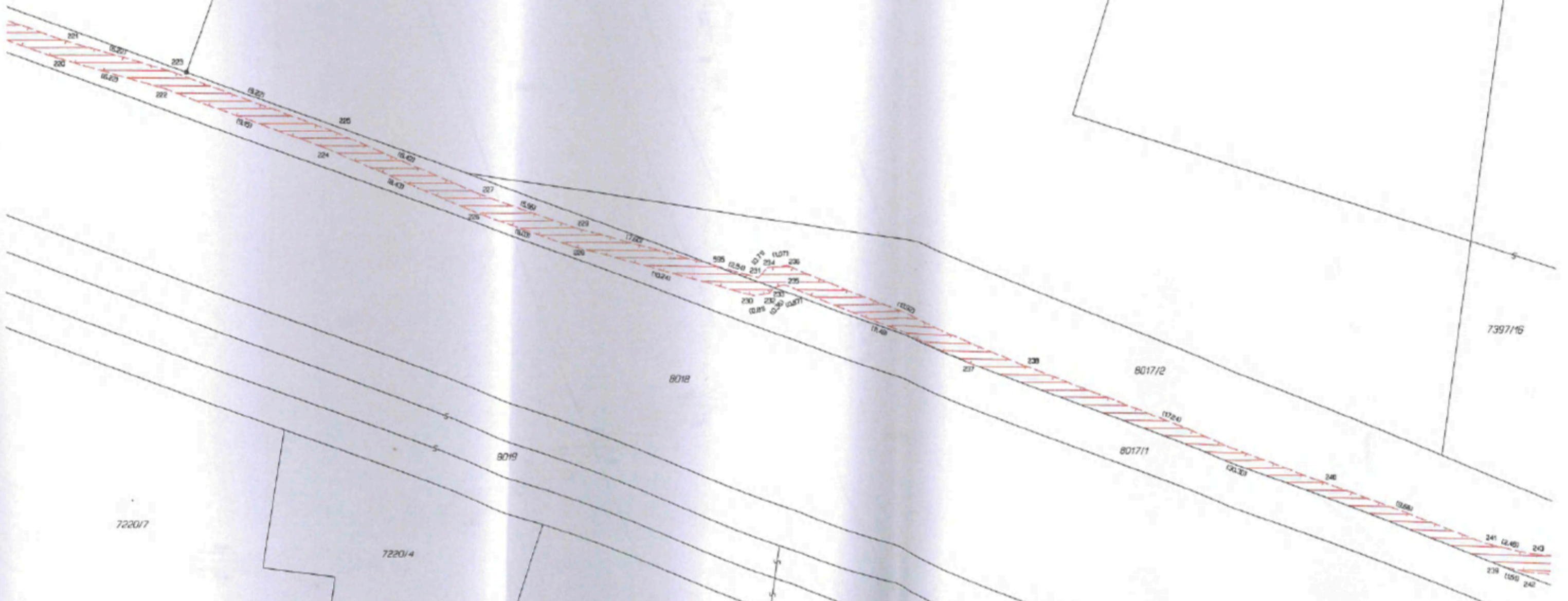
8017/2

8017/1

7220/7

7220/4

7226/1







List 9

73713

739713

8020/1

739714

8020/3

7396/11

7391

7392

7391

7375/10

7375/9

7375/8

7375/7

7375/11

7375/1

7394/1

7375/24

7375/17

7375/23

7375/1



List 10

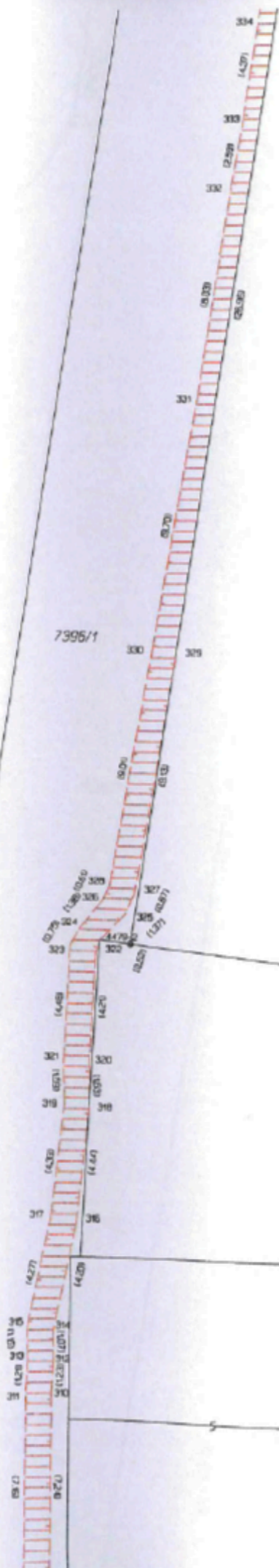
7397/19

7397/20

8020/3

8020/1

7397/13



7396/3

7396/4

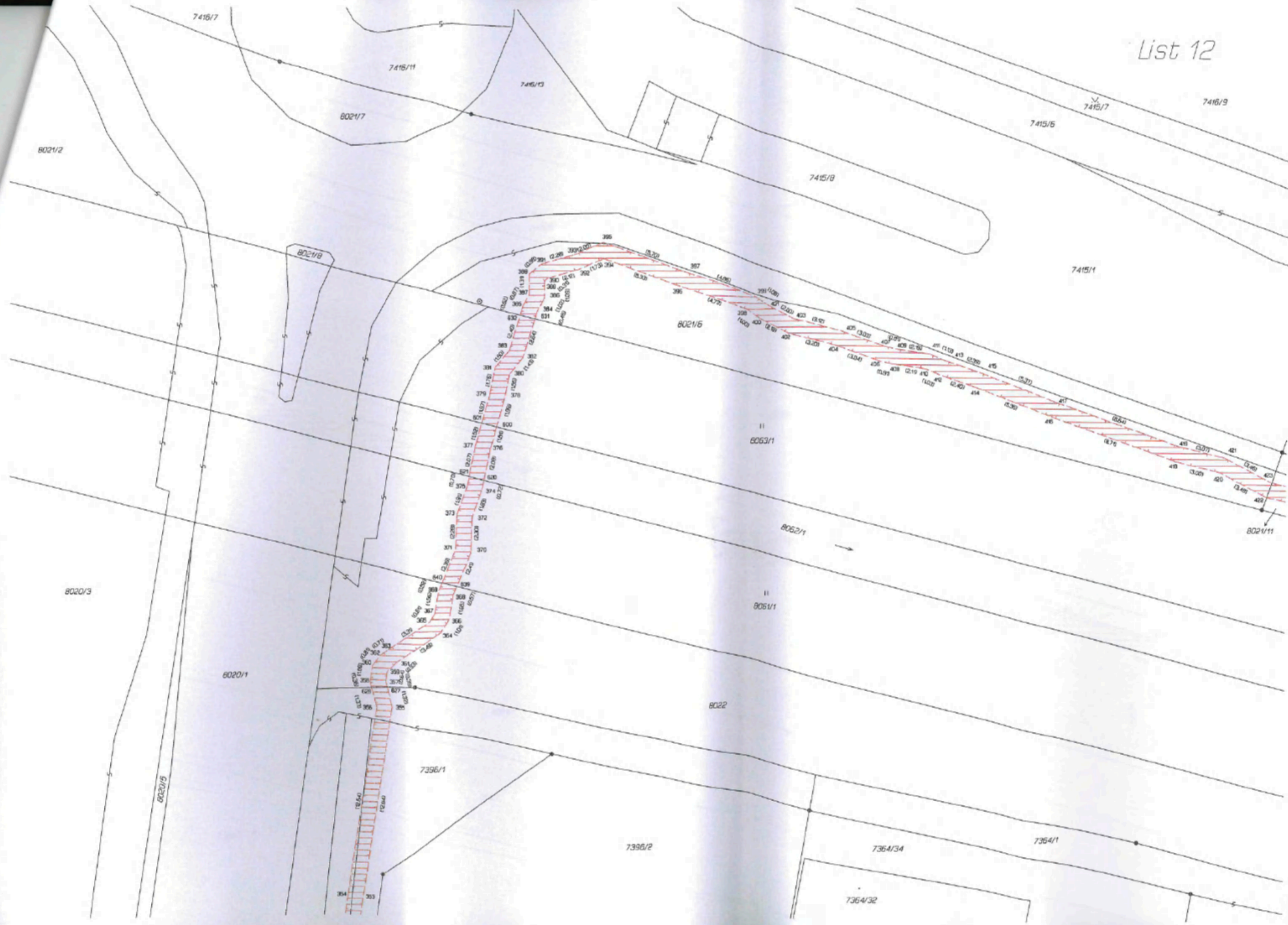
7391

7364/24

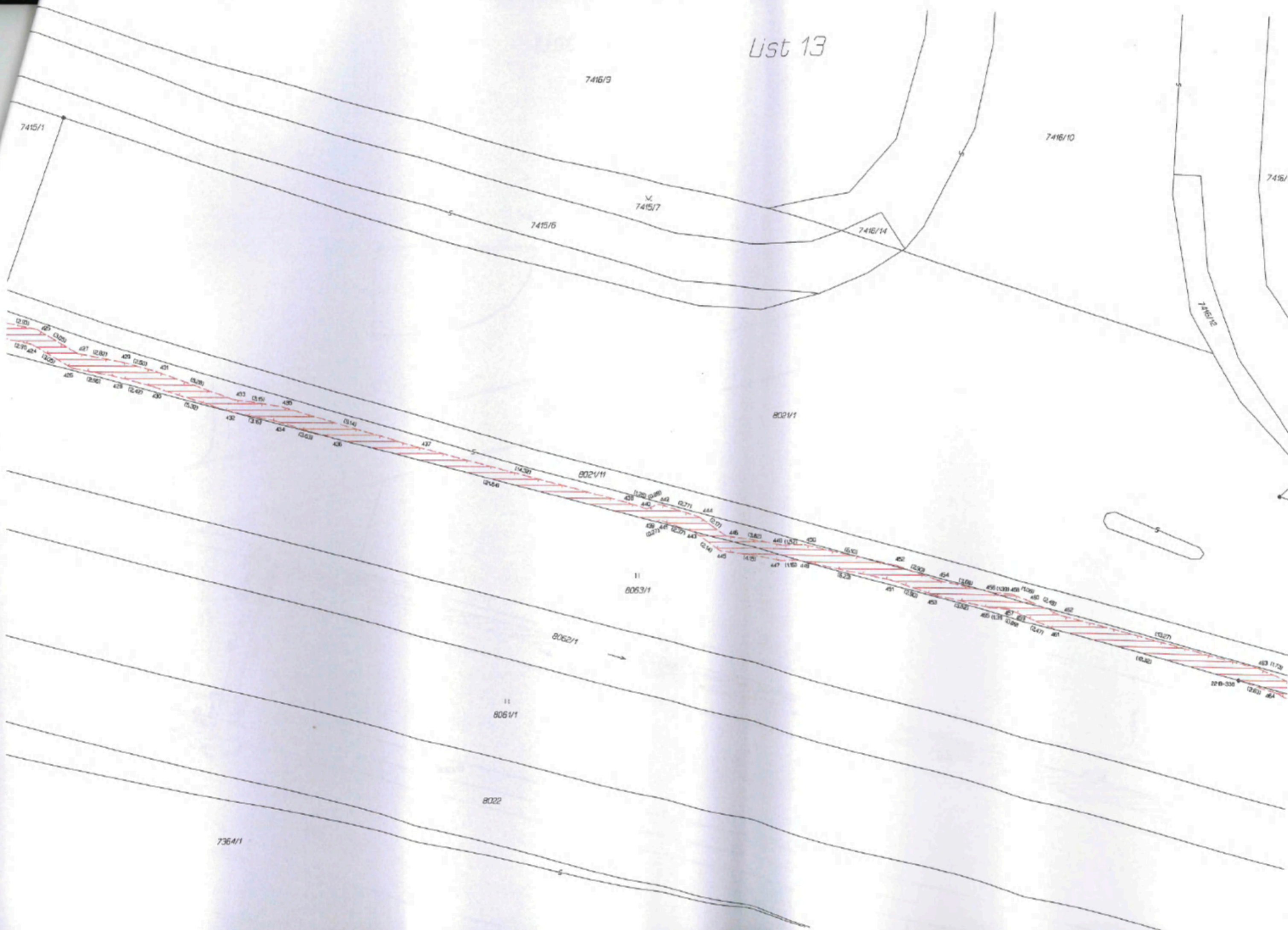
7364/1

7364/35

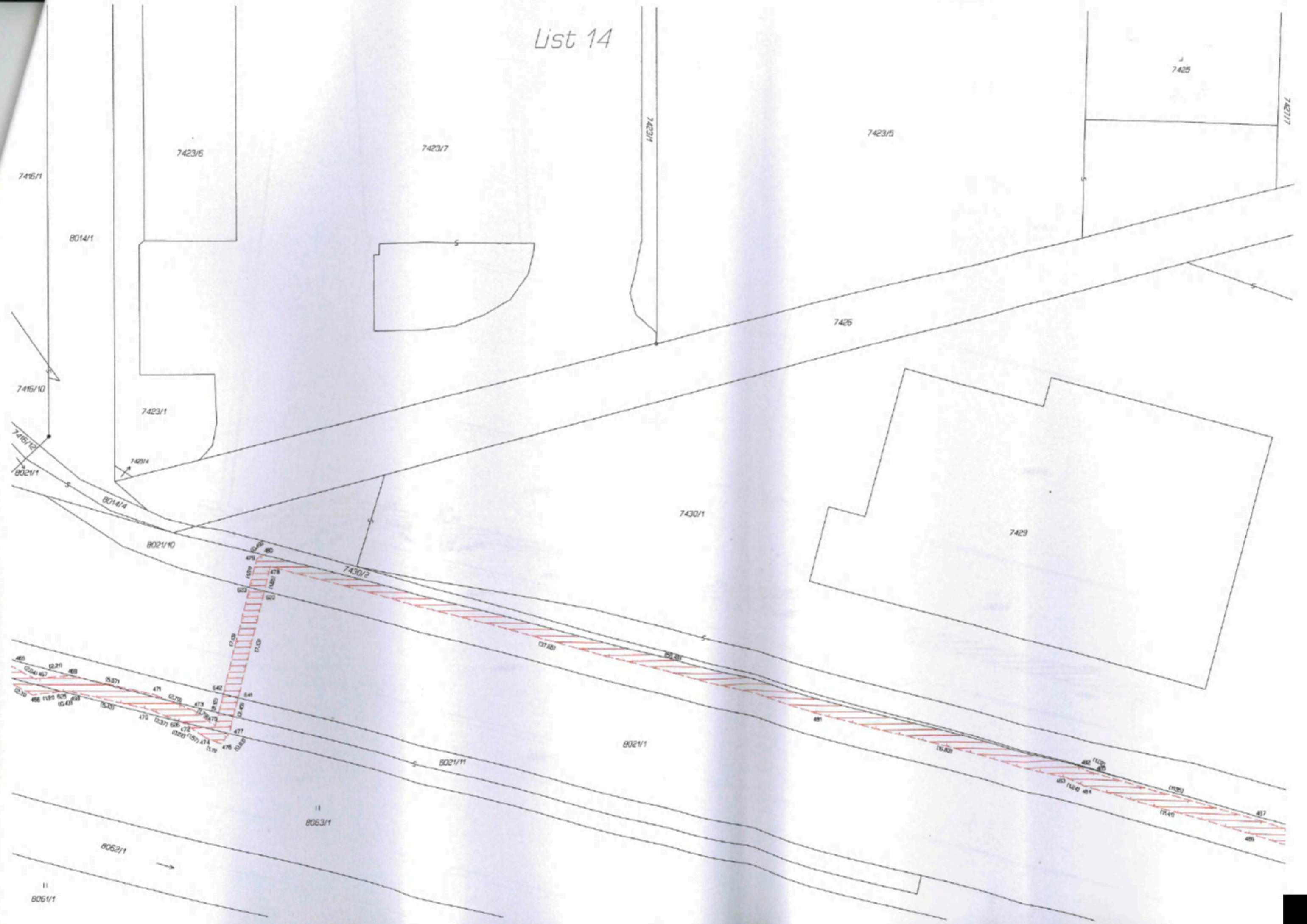




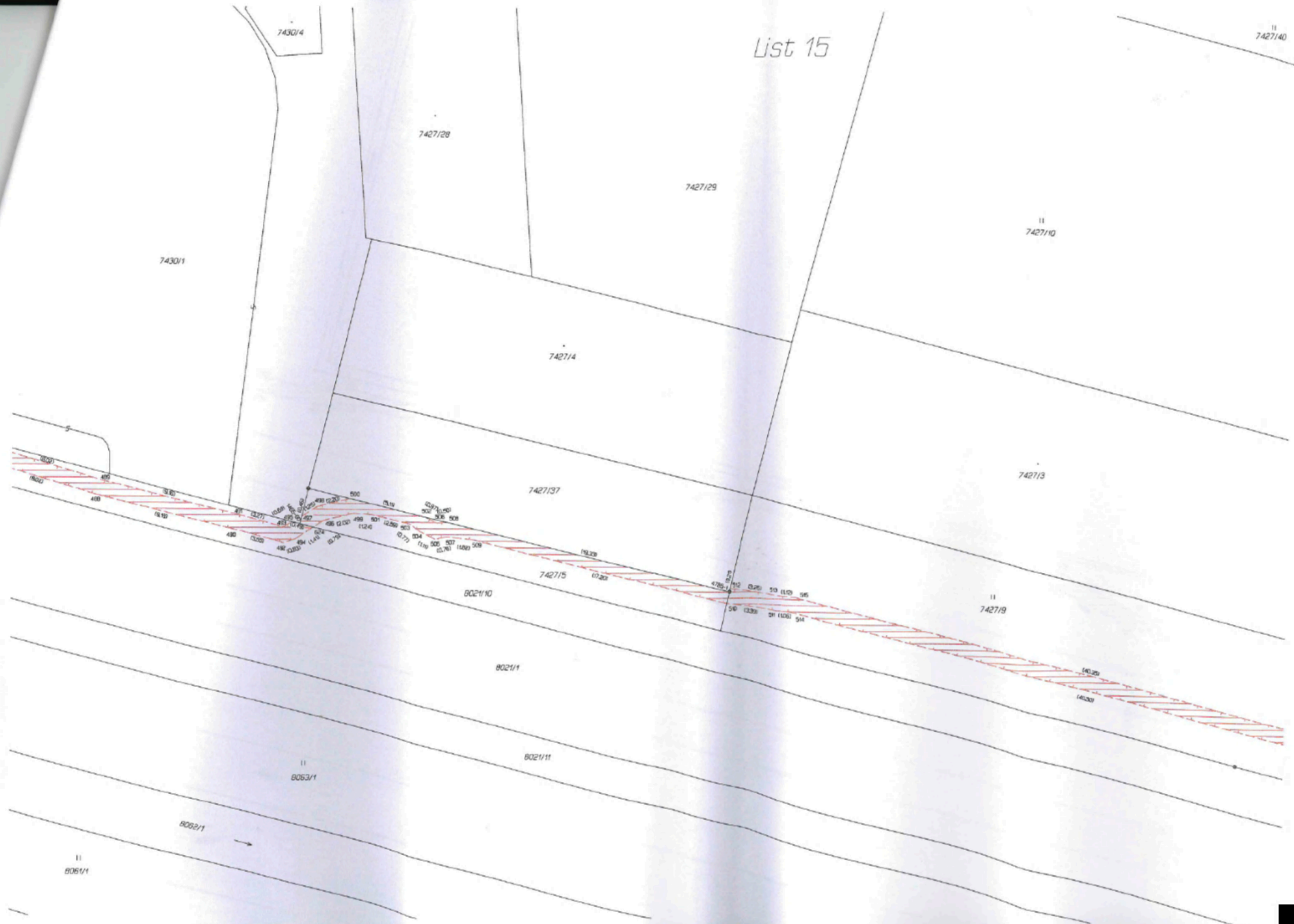
List 13



List 14



List 15



List 16

11  
7427/10

7427/13

11  
7427/19

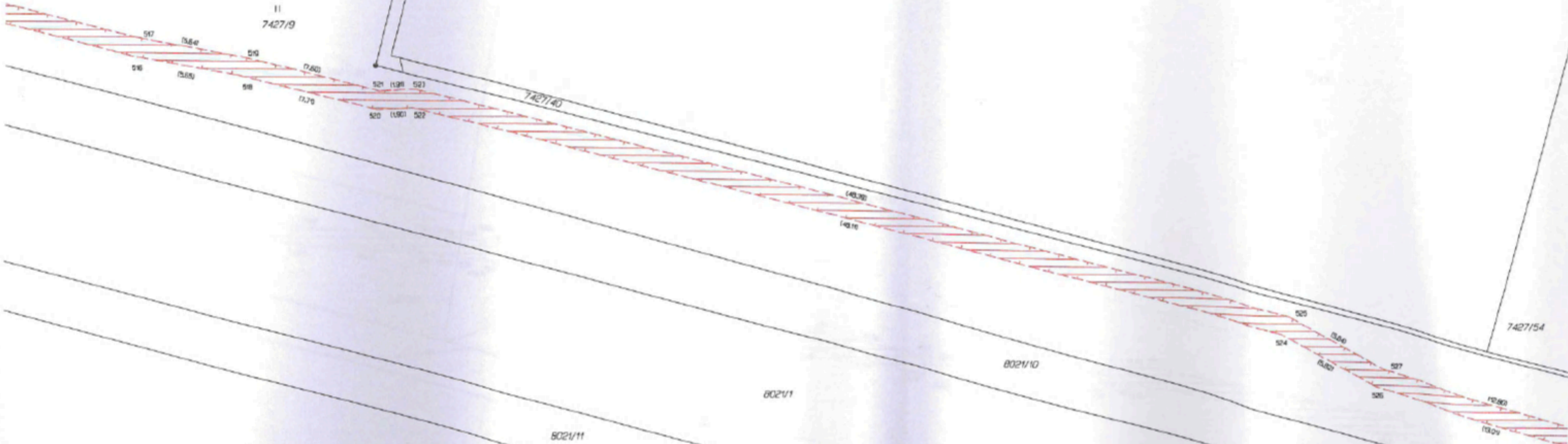
7427/54

7427/54

7427/55

7427/40

7427/54



8021/10

8021/1

8021/11

11  
8053/1

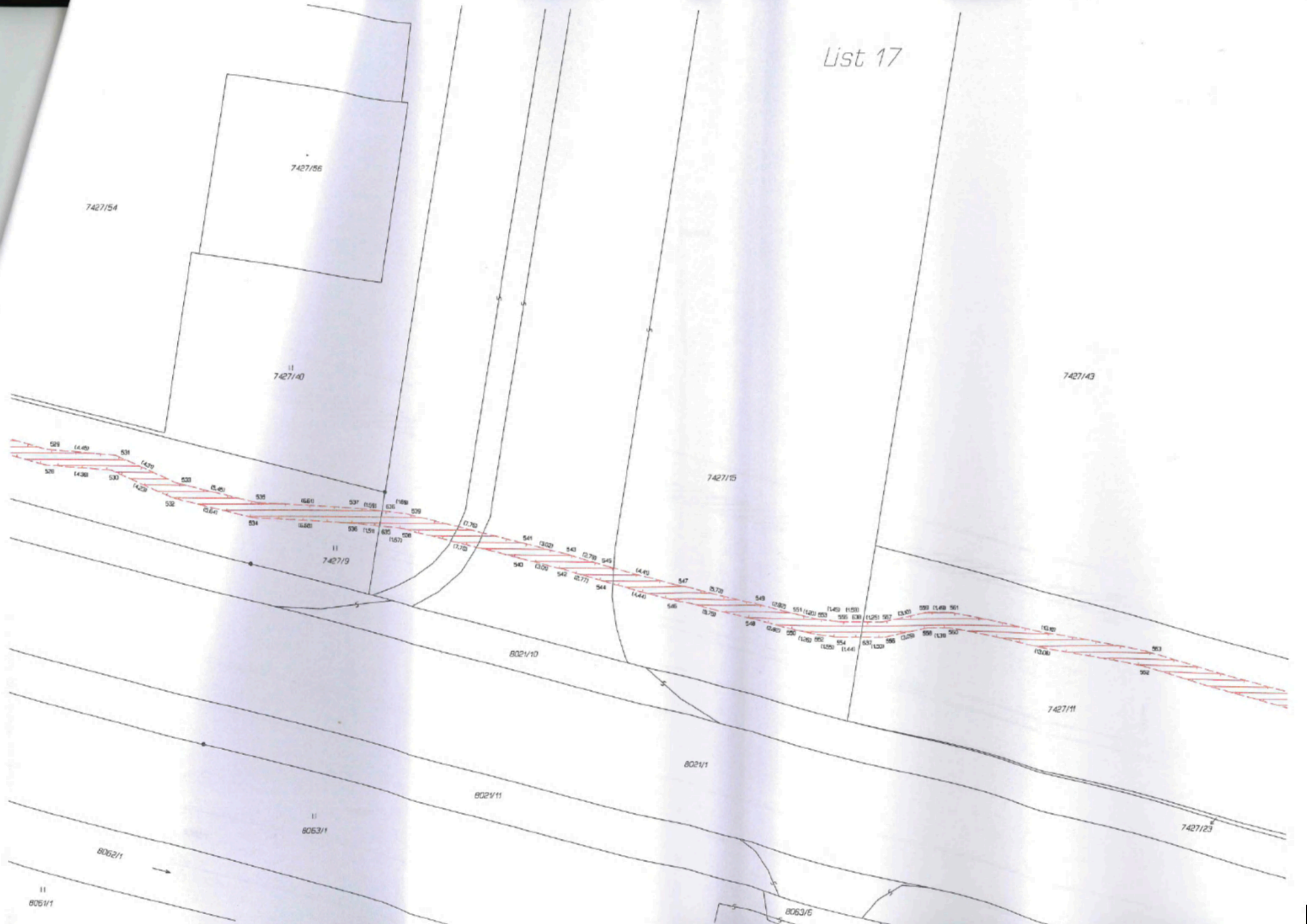
8022/1

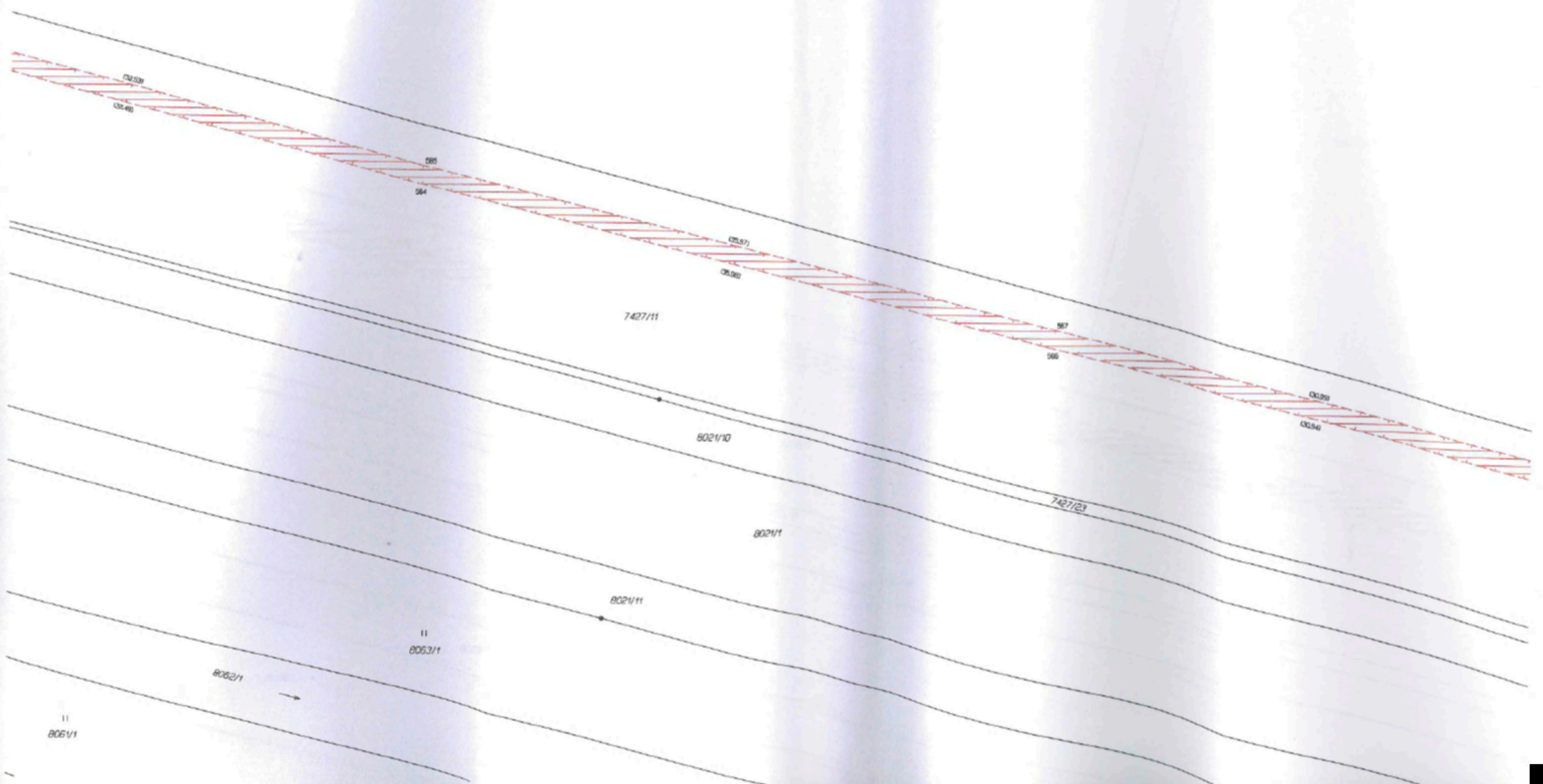
11  
8051/1

8022



List 17

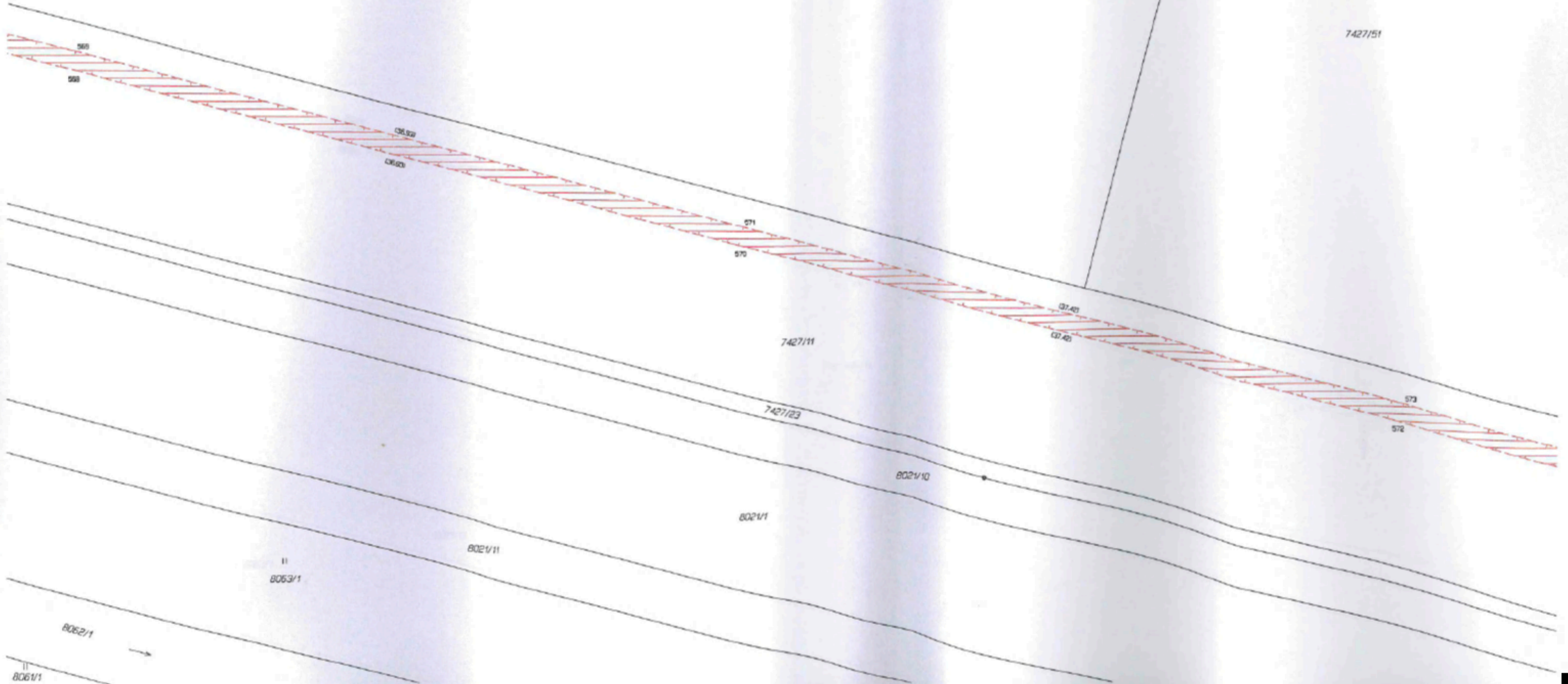




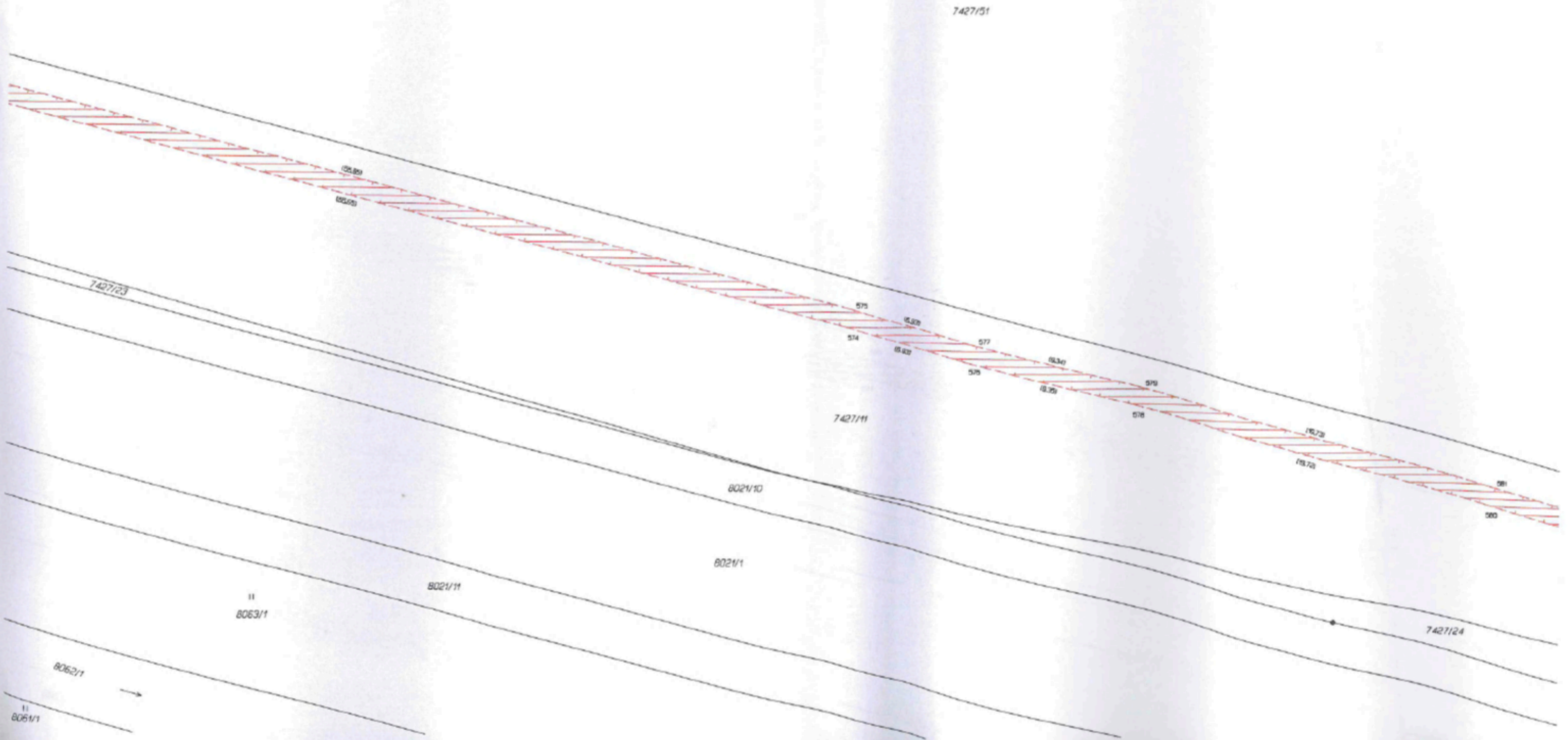
List 19

7427/43

7427/51



List 20



List 21

650

K.Ú. Kralice na Haně  
K.Ú. Prostějov

7427/51

310/69

