









829  
830  
831  
832  
833

838  
839

844  
845  
846  
847  
848  
849  
850  
851

385

384

597/1

596/2

386/2

396

320/94

320/95

320/96

397

398

320/97

399

320/98

400

320/99

401

320/100

402

320/101

320/244

320/227

320/1

403

404

405

406

407

408

320/400

320/400

1009

1007

1005

1003

1001

1000

586 (1.37)  
585 (1.30)  
588 (1.30)  
587 (1.33)  
593 (4.39)  
592 (4.55)

584 (0.92)  
583 (0.40)  
582 (0.32)  
581 (1.50)  
579 (1.13)  
578 (1.13)

577 (0.92)  
576 (0.92)  
575 (0.92)  
574 (0.92)  
573 (0.92)  
572 (0.92)

569 (0.92)  
568 (0.92)  
567 (0.92)  
566 (0.92)  
565 (0.92)  
564 (0.92)

563 (0.74)  
562 (0.74)  
561 (0.74)  
560 (0.74)  
559 (0.74)  
558 (0.74)

557 (0.96)  
556 (0.96)  
555 (0.96)  
554 (0.96)  
553 (0.96)  
552 (0.96)

551 (3.06)  
550 (3.56)  
549 (3.13)  
548 (2.72)  
547 (2.72)  
546 (2.72)

545 (2.19)  
544 (2.19)  
543 (2.19)  
542 (2.19)  
541 (2.19)  
540 (4.20)

539 (5.23)  
538 (5.80)  
537 (5.80)  
536 (5.80)  
535 (5.80)  
534 (2.40)

533 (2.40)  
532 (2.40)  
531 (2.40)  
530 (2.40)  
529 (2.40)  
528 (2.40)

527 (10.44)  
526 (10.44)  
525 (10.44)  
524 (10.44)  
523 (10.44)  
522 (10.44)

521 (4.93)  
520 (4.93)  
519 (4.93)  
518 (4.93)  
517 (4.93)  
516 (7.94)

515 (8.83)  
514 (8.83)  
513 (8.83)  
512 (8.83)  
511 (5.45)  
510 (5.45)

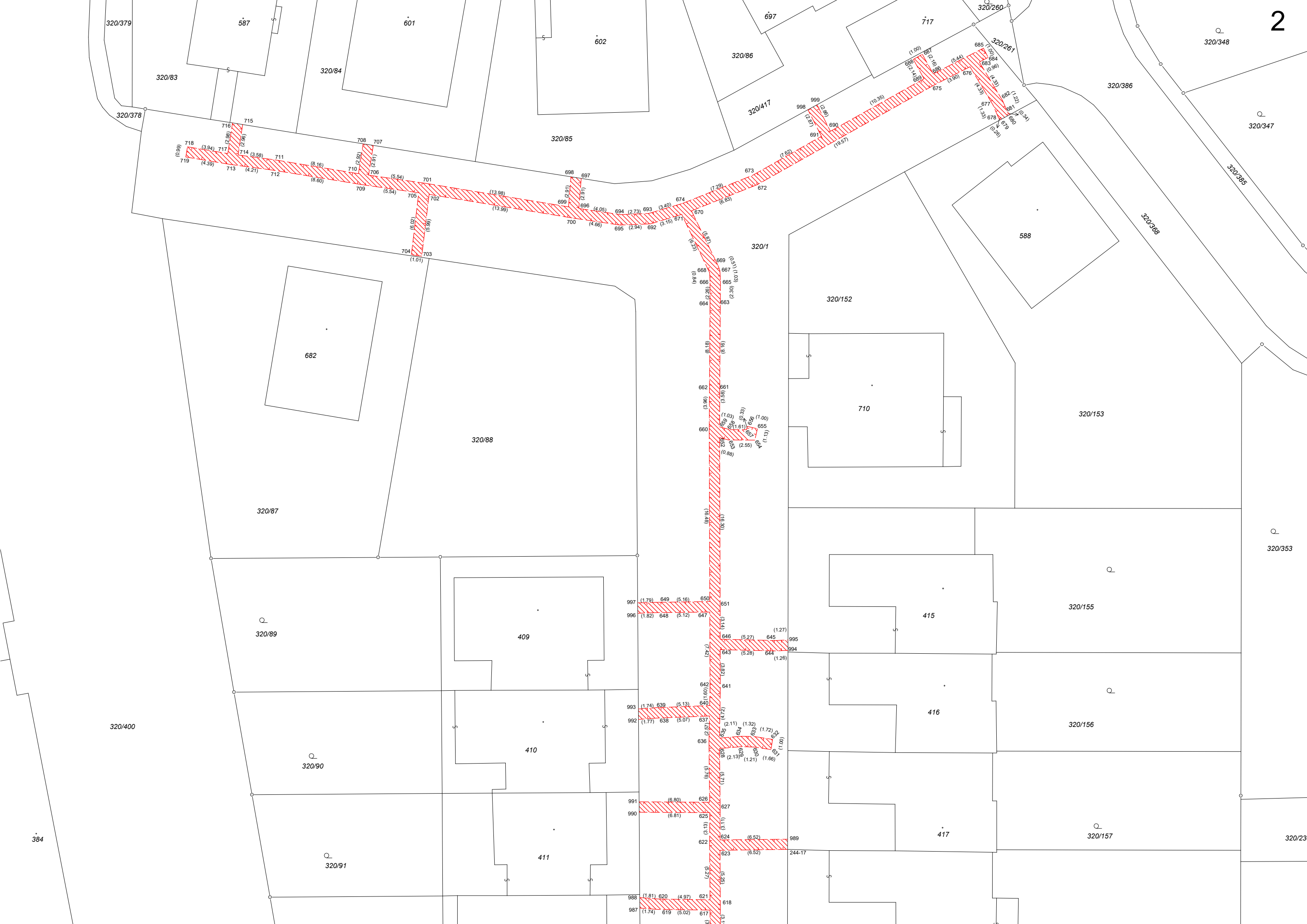
509 (3.84)  
508 (3.84)  
507 (3.84)  
506 (3.84)  
505 (3.84)  
504 (4.36)

503 (4.41)  
502 (4.41)  
501 (4.41)  
500 (4.41)  
499 (4.41)  
498 (4.41)

497 (1.67)  
496 (1.67)  
495 (1.67)  
494 (1.67)  
493 (1.67)  
492 (1.67)

491 (1.67)  
490 (1.67)  
489 (1.67)  
488 (1.67)  
487 (1.67)  
486 (1.67)

485 (1.67)  
484 (1.67)  
483 (1.67)  
482 (1.67)  
481 (1.67)  
480 (1.67)



384

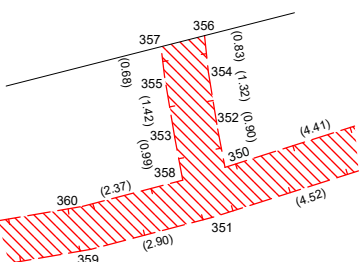
320/23



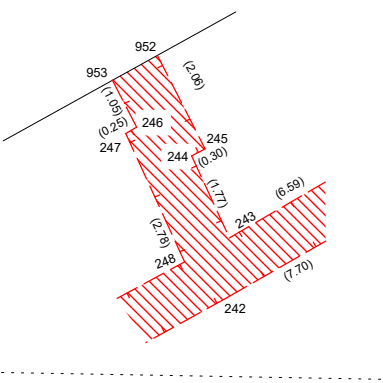


Detail A:

Detail A:

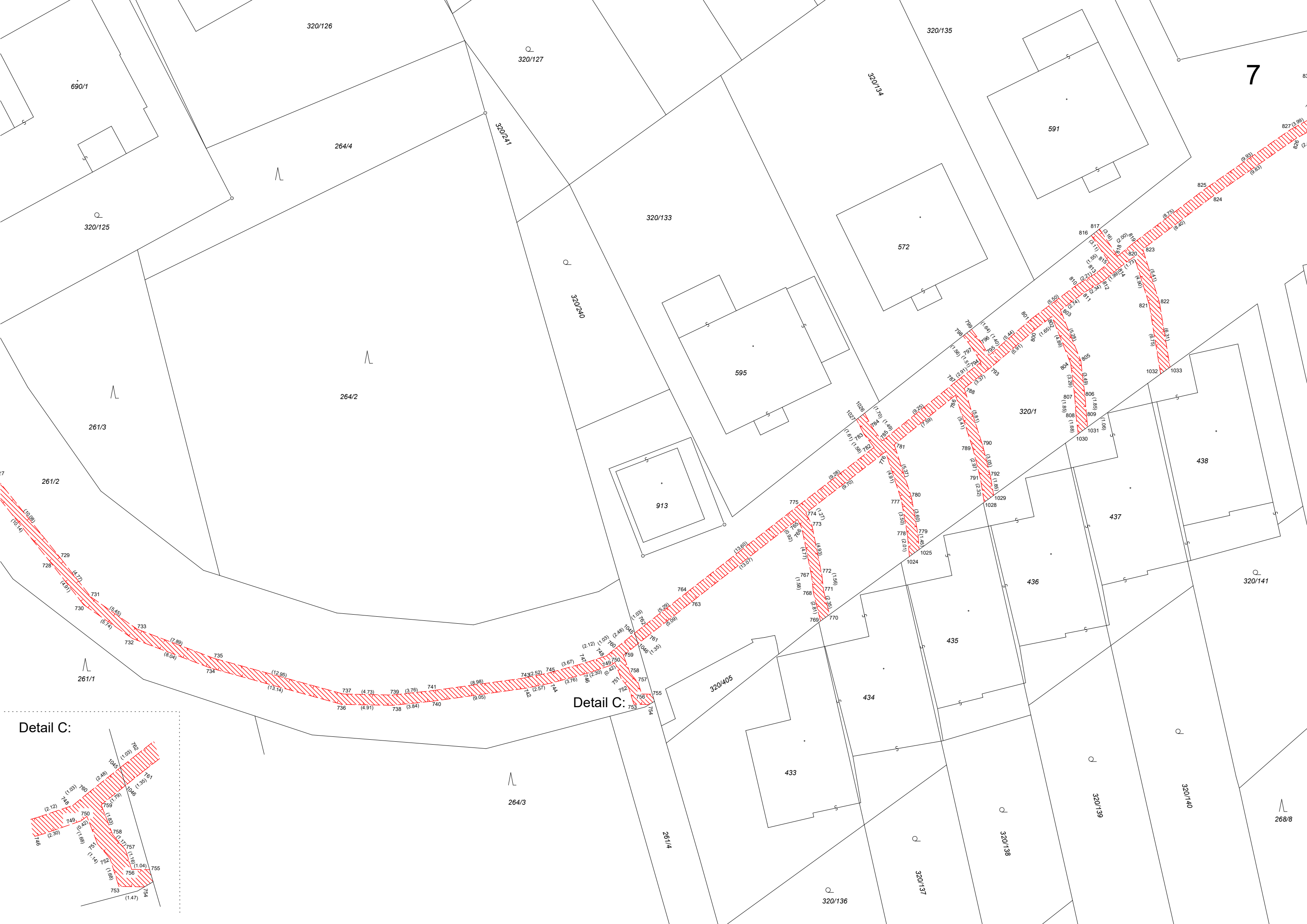


Detail B:



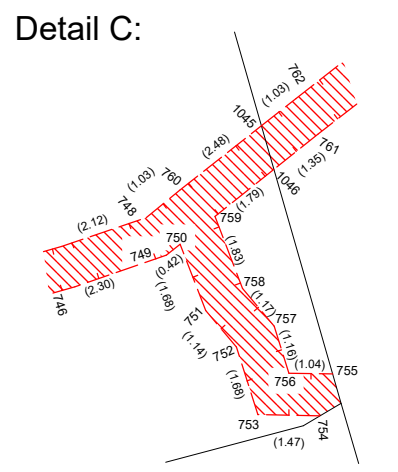






7

Detail C:



320/205

699

280

113

320/1

9/2

8/1

8/3

8

8/2

6

8



502

503

504

505

278/2

320/208

320/209

320/210

320/211

35/1

35/2

378

589/1

589/2

589/3

320/207

278/3

278/14

320/212

320/214

320/215

320/216

320/217

320/218

354

277/3

14

13/1

