

GEOMETRICKÝ PLÁN pro vymezení rozsahu věcného břemene k části pozemku	Geometrický plán ověřil úředně oprávněný zeměměřický inženýr:	Stejnopis ověřil úředně oprávněný zeměměřický inženýr:
	Jméno, příjmení: Ing. Michal Kadlec	Jméno, příjmení:
	Číslo položky seznamu úředně oprávněných zeměměřických inženýrů: 1899/2000	Číslo položky seznamu úředně oprávněných zeměměřických inženýrů:
	Dne: 29. září 2021 Číslo: 1706/2021	Dne: Číslo:
Náležitosti a přesnosti odpovídá právním předpisům.	Tento stejnopis odpovídá geometrickému plánu v elektronické podobě uloženému v dokumentaci katastrálního úřadu.	
Vyhotovitel: Ing. Michal Kadlec Za Lávkou 332 560 02 Česká Třebová IČ: 701 44 575	Katastrální úřad souhlasí s očíslováním parcel. KÚ pro Pardubický kraj KP Ústí nad Orlicí Tereza Sedová PGP-1967/2021-611 2021.10.07 09:28:56 CEST	Ověření stejnopisu geometrického plánu v listinné podobě.
Číslo plánu: 4008-54/2020		
Okres: Ústí nad Orlicí		
Obec: Lanškroun		
Kat. území: Lanškroun		
Mapový list: Moravská Třebová 5-0/32,34		
Dosavadním vlastníkům pozemků byla poskytnuta možnost seznámit se v terénu s průběhem navrhovaných nových hranic, které byly označeny předepsaným způsobem: ---		

VÝKAZ DOSAVADNÍHO A NOVÉHO STAVU ÚDAJŮ KATASTRU NEMOVITOSTÍ

Dosavadní stav			Nový stav													
Označení pozemku parc. číslem	Výměra parcely		Druh pozemku	Označení pozemku parc. číslem	Výměra parcely		Druh pozemku	Typ stavby	Způsob využití	Způsob využití	Zpús. určení výměr	Porovnání se stavem evidence právních vztahů				
	ha	m ²			Způsob využití	ha						m ²	Způsob využití	Způsob využití	Díl přechází z pozemku označeného v katastru nemovitostí	Číslo listu vlastnictví
													ha	m ²		
st.2												st.2			2535	
st.3/2												st.3/2			4018	
st.3/3												st.3/3			3153	
5/1												5/1			10001	
st.5/2												st.5/2			1069	
st.19/2												st.19/2			980	
st.19/5												st.19/5			3016	
st.20												st.20			10001	
st.24/1												st.24/1			3119	
st.25/1												st.25/1			773	
st.26												st.26			1308	
st.29												st.29			4672	
st.32/2												st.32/2			10001	
st.34/2												st.34/2			2587	
st.38/2												st.38/2			3042	
st.41/2												st.41/2			469	
st.50/1												st.50/1			2735	
64/5												64/5			10001	
65/3												65/3			10001	
78/1												78/1			1173	
89/1												89/1			10001	
89/3												89/3			2790	
89/8												89/8			2790	
89/10												89/10			2790	
st.707												st.707			271	
st.709/2												st.709/2			123	
st.720/1												st.720/1			3130	
st.721												st.721			2272	
st.723/2												st.723/2			1123	
st.724												st.724			1102	
st.735												st.735			1919	
st.737												st.737			1107	
st.893												st.893			1138	
3668/5												3668/5			10001	
3668/7												3668/7			10001	
3668/9												3668/9			10001	
3668/13												3668/13			10001	
3668/17												3668/17			10001	
3669/3												3669/3			10001	
3669/74												3669/74			10001	
st.3805												st.3805			3995	
4200/1												4200/1			10001	
4201												4201			10001	
4238												4238			10001	
4299												4299			10001	
4352												4352			10001	
4353/3												4353/3			10001	
4441												4441			10001	

Druh věcného břemene: dle smlouvy

Oprávněný: dle smlouvy

Seznam souřadnic (S-JTSK)

Číslo bodu	Souřadnice pro zápis do KN			Souřadnice určené měřením		Poznámka
	Y	X	Kód kv.	Y	X	
59-578	589075.43	1081423.67	4			
81-291	589254.39	1081518.55	4			
81-331	589236.45	1081506.85	4			
81-332	589246.03	1081513.16	4			
82-7	589162.89	1081626.51	4			
82-23	589197.32	1081591.13	4			
82-24	589197.10	1081589.07	4			
82-32	589200.09	1081583.03	4			
82-33	589201.92	1081582.82	4			
82-43	589216.15	1081565.20	4			
82-45	589172.22	1081546.80	4			
82-60	589165.78	1081553.92	4			
82-62	589142.59	1081539.41	4			
82-69	589133.58	1081533.10	4			
82-71	589128.72	1081526.01	4			
82-193	589102.66	1081447.00	4			
82-283	589134.90	1081653.81	4			
82-405	589208.96	1081559.00	4			
82-415	589139.25	1081653.68	4			
82-416	589153.37	1081637.73	4			
82-420	589162.54	1081626.22	4			
82-514	589180.52	1081606.64	4			
82-572	589193.05	1081546.01	4			
82-573	589187.30	1081541.35	4			
82-575	589181.69	1081575.13	3			
82-576	589178.16	1081572.11	4			
82-577	589174.39	1081573.67	3			
82-692	589119.85	1081502.65	4			
84-101	589240.25	1081586.06	4			
84-102	589220.25	1081573.14	4			
84-104	589193.27	1081605.51	4			
84-112	589205.51	1081592.83	4			
84-135	589250.68	1081623.20	4			
84-136	589245.12	1081619.54	4			
84-139	589277.00	1081638.82	4			
84-165	589306.46	1081646.86	4			
84-176	589293.85	1081641.20	4			
84-177	589287.13	1081638.38	4			
84-178	589282.09	1081636.35	4	589282.14	1081635.77	
84-180	589286.34	1081642.04	4			
84-181	589288.12	1081636.30	4			
84-276	589181.72	1081617.71	4			
84-284	589200.36	1081598.07	4			
84-352	589275.73	1081641.09	4			
84-380	589291.22	1081637.93	4			
84-385	589234.24	1081607.22	4			
84-422	589259.48	1081598.31	4			
84-423	589260.79	1081597.23	4			
84-427	589256.35	1081604.14	4			
84-442	589190.45	1081626.34	4			
350-1	589257.43	1081606.07	4			
350-2	589261.21	1081599.22	4			
350-11	589267.31	1081600.78	4			
350-12	589261.96	1081597.87	4			
764-4	589112.01	1081412.52	3			
764-6	589115.11	1081420.72	3			
764-22	589096.24	1081433.12	3			
764-23	589102.60	1081413.73	3			
764-30	589117.26	1081414.62	3			
1317-644	589258.18	1081519.44	3			
1317-645	589256.21	1081519.41	3			
1317-693	589254.38	1081519.18	3			
1319-6	589175.43	1081563.37	3			
1319-9	589166.78	1081553.82	3			
1319-16	589195.89	1081580.72	3			
1319-39	589187.04	1081573.40	3			
1319-40	589186.16	1081572.81	3			
1319-50	589166.76	1081554.77	3			
1519-1	589110.60	1081416.28	3			
1519-3	589107.19	1081414.66	3			
2011-5	589105.70	1081415.10	4			
2107-13	589245.12	1081519.12	3			
2107-15	589241.60	1081527.01	3			

2107-16	589237.98	1081532.52	3
2296-1	589102.53	1081422.75	3
2296-2	589100.04	1081421.54	3
2326-3	589287.71	1081636.11	3
2326-6	589283.15	1081634.16	3
2402-275	589221.13	1081557.89	3
2402-276	589226.34	1081550.19	3
2402-277	589230.39	1081543.96	3
2402-278	589233.58	1081539.29	3
2402-283	589220.47	1081558.00	3
2593-5	589184.30	1081615.18	3
2593-6	589183.39	1081614.12	3
2618-1	589127.90	1081524.06	3
2731-7	589176.45	1081570.51	3
2845-27	589145.24	1081532.02	4
2845-28	589150.97	1081537.28	4
2845-29	589142.07	1081531.26	4
2845-31	589136.74	1081526.08	4
2845-33	589129.75	1081509.02	4
2845-65	589120.74	1081479.22	4
2845-66	589125.61	1081495.44	4
2845-92	589106.34	1081441.84	4
2845-108	589192.77	1081507.08	4
2845-121	589196.36	1081540.45	4
2845-122	589186.65	1081533.29	4
2845-125	589175.86	1081531.74	4
2845-137	589126.20	1081497.37	4
2845-158	589208.13	1081548.99	4
2845-193	589155.51	1081542.39	4
2845-211	589241.70	1081577.34	4
2845-212	589253.55	1081585.12	4
2845-222	589233.64	1081573.02	4
2845-224	589241.63	1081577.60	4
2845-228	589234.17	1081554.58	4
2845-231	589251.47	1081528.18	4
2845-232	589254.52	1081523.53	4
2845-233	589233.87	1081572.65	4
2845-234	589225.53	1081568.00	4
2845-237	589252.88	1081583.97	4
2845-308	589254.52	1081523.34	3
3740-10	589256.43	1081622.04	3
3742-25	589261.55	1081598.61	4
3853-4	589139.30	1081651.62	3
108	589136.95	1081653.09	3
109	589135.93	1081653.59	3
126	589141.11	1081530.68	3
127	589140.87	1081530.45	3
128	589141.05	1081530.27	4
138	589128.84	1081526.68	3
139	589128.68	1081526.42	3
140	589174.31	1081573.12	3
142	589174.36	1081573.53	3
150	589133.80	1081533.57	3
151	589134.10	1081533.74	3
158	589122.60	1081510.20	3
159	589122.74	1081510.52	3
160	589122.56	1081510.60	3
202	589308.90	1081646.87	3
203	589307.78	1081646.37	3
225	589276.42	1081640.68	3
275	589250.01	1081622.87	3
276	589250.26	1081623.00	3
300	589135.82	1081653.35	4
301	589136.83	1081652.85	4
304	589259.91	1081599.18	3
306	589259.63	1081599.72	3
307	589276.03	1081640.68	3
308	589276.32	1081640.85	3
309	589309.00	1081646.65	3
310	589174.13	1081573.28	3
311	589141.28	1081530.50	4
312	589133.98	1081533.95	3
313	589133.68	1081533.78	3
314	589128.66	1081526.79	3
315	589128.50	1081526.53	3
316	589122.42	1081510.28	3
317	589250.15	1081623.21	3

318	589249.90	1081623.08	3
340	589136.62	1081653.25	3
341	589136.83	1081654.15	3
342	589136.89	1081653.45	3
343	589140.08	1081652.47	3
344	589139.42	1081652.13	3
345	589141.95	1081650.60	3
346	589141.45	1081650.12	3
347	589145.18	1081647.04	3
348	589144.66	1081646.56	3
349	589149.60	1081642.31	3
350	589149.08	1081641.83	3
351	589153.39	1081638.29	3
352	589152.87	1081637.81	3
353	589157.58	1081633.57	3
354	589157.06	1081633.09	3
355	589161.37	1081629.72	3
356	589160.85	1081629.24	3
357	589164.05	1081626.66	3
358	589163.30	1081626.46	3
359	589163.77	1081625.94	3
360	589162.68	1081625.91	3
361	589163.15	1081625.39	3
362	589167.52	1081622.95	3
363	589167.00	1081622.47	3
364	589172.64	1081617.49	3
365	589172.12	1081617.01	3
366	589176.88	1081612.95	3
367	589176.38	1081612.47	3
368	589180.02	1081609.68	3
369	589179.94	1081608.74	3
370	589181.01	1081610.43	3
371	589181.47	1081609.89	3
372	589182.60	1081611.93	3
373	589183.10	1081611.45	3
374	589183.92	1081613.43	3
375	589184.26	1081612.75	3
376	589184.63	1081613.37	3
377	589184.11	1081614.10	3
378	589184.89	1081614.28	3
379	589181.83	1081616.73	3
380	589182.65	1081616.85	3
381	589182.32	1081617.87	3
382	589183.08	1081617.89	3
383	589182.17	1081618.16	4
384	589182.33	1081618.31	4
385	589182.17	1081618.46	3
386	589182.40	1081618.69	3
387	589182.55	1081618.53	4
388	589182.70	1081618.68	4
389	589186.07	1081611.00	3
390	589186.57	1081611.48	3
391	589189.55	1081607.23	3
392	589190.05	1081607.71	3
393	589192.39	1081604.33	3
394	589192.64	1081605.07	3
395	589193.12	1081604.56	3
396	589193.18	1081605.59	4
398	589193.47	1081605.61	3
399	589193.69	1081605.39	3
400	589193.53	1081605.23	4
401	589193.67	1081605.09	4
402	589194.44	1081602.06	3
403	589194.96	1081602.54	3
404	589197.28	1081599.10	3
405	589197.78	1081599.58	3
406	589200.99	1081595.11	3
407	589201.24	1081595.87	3
408	589201.72	1081595.35	3
409	589201.86	1081596.54	4
410	589202.00	1081596.40	4
411	589202.15	1081596.56	3
412	589202.38	1081596.33	3
413	589202.22	1081596.18	4
414	589202.35	1081596.04	4
415	589204.24	1081591.71	3
416	589204.76	1081592.17	3

417	589206.95	1081588.46	3
418	589207.65	1081588.72	3
419	589206.96	1081587.79	3
420	589207.66	1081587.91	3
421	589207.14	1081587.20	3
422	589207.84	1081587.32	3
423	589207.47	1081586.46	3
424	589208.94	1081584.40	3
425	589209.60	1081584.86	3
426	589211.64	1081580.42	3
427	589212.28	1081580.90	3
428	589214.65	1081576.67	3
429	589215.27	1081577.17	3
430	589216.91	1081573.92	3
431	589217.51	1081574.44	3
432	589219.17	1081571.53	3
433	589219.63	1081572.19	3
434	589219.74	1081571.28	3
435	589220.29	1081571.91	3
436	589220.39	1081570.53	3
437	589222.73	1081573.57	3
438	589223.39	1081572.57	3
439	589227.19	1081576.39	3
440	589227.83	1081575.37	3
441	589229.89	1081578.12	3
442	589229.87	1081576.68	3
443	589230.36	1081577.04	3
444	589233.33	1081580.08	3
445	589233.91	1081579.14	3
446	589237.99	1081583.01	3
447	589238.57	1081582.07	3
448	589240.14	1081584.39	3
449	589240.50	1081583.26	3
450	589241.03	1081583.54	3
451	589231.00	1081575.48	3
452	589231.48	1081575.84	3
453	589232.24	1081573.34	3
454	589232.84	1081573.60	3
455	589232.75	1081572.47	4
456	589232.92	1081572.57	4
457	589233.03	1081572.38	3
458	589233.30	1081572.55	3
459	589233.18	1081572.73	4
460	589233.34	1081572.84	4
461	589233.19	1081573.10	3
462	589235.23	1081574.72	3
463	589235.21	1081574.04	3
464	589235.83	1081574.37	3
465	589235.45	1081573.66	4
466	589235.62	1081573.76	4
467	589235.73	1081573.58	3
468	589236.00	1081573.75	3
469	589235.88	1081573.93	4
470	589236.04	1081574.04	4
471	589239.28	1081576.41	3
472	589238.96	1081576.93	3
473	589240.90	1081577.44	3
474	589240.34	1081577.80	3
475	589241.01	1081578.21	3
476	589240.45	1081578.57	3
477	589242.66	1081579.26	3
478	589242.41	1081579.81	3
479	589243.06	1081579.86	3
480	589243.26	1081578.27	4
481	589243.43	1081578.37	4
482	589243.54	1081578.18	3
483	589243.82	1081578.34	3
484	589243.71	1081578.53	4
485	589243.87	1081578.62	4
486	589241.55	1081581.57	3
487	589242.07	1081581.87	3
488	589241.74	1081585.43	3
489	589242.40	1081584.43	3
490	589247.59	1081589.20	3
491	589248.23	1081588.18	3
492	589252.46	1081592.27	3
493	589253.10	1081591.25	3

494	589256.05	1081594.49	3		
495	589256.65	1081593.45	3		
496	589260.18	1081596.64	3		
497	589261.21	1081595.83	3		
498	589261.32	1081596.88	3		
499	589262.33	1081596.53	3		
500	589262.03	1081597.17	3		
501	589267.79	1081599.62	3		
502	589266.91	1081599.92	3		
503	589266.70	1081600.45	4		
504	589260.62	1081598.18	3		
505	589259.89	1081598.81	3		
506	589261.09	1081599.44	4		
507	589259.74	1081599.09	3		
508	589259.46	1081599.63	3		
509	589277.67	1081639.05	4		
510	589256.88	1081604.42	3		
511	589255.83	1081605.05	3		
512	589256.37	1081605.31	3		
513	589253.59	1081609.45	3		
514	589254.13	1081609.71	3		
515	589252.25	1081612.41	3		
516	589252.81	1081612.63	3		
517	589250.60	1081616.79	3		
518	589251.20	1081616.91	3		
519	589250.46	1081618.88	3		
520	589251.09	1081618.47	4		
521	589251.75	1081619.76	3		
522	589252.36	1081619.45	3		
523	589252.33	1081620.14	3		
524	589249.87	1081622.67	4		
525	589250.45	1081623.05	4		
526	589253.90	1081620.44	3		
527	589253.56	1081620.94	3		
528	589258.20	1081623.33	3		
529	589257.86	1081623.83	3		
530	589262.46	1081626.14	3		
531	589262.14	1081626.64	3		
532	589267.35	1081629.33	3		
533	589267.03	1081629.83	3		
534	589271.61	1081632.04	3		
535	589271.31	1081632.56	3		
536	589275.66	1081634.00	3		
537	589275.44	1081634.56	3		
538	589278.91	1081635.06	3		
539	589278.36	1081635.51	3		
540	589279.02	1081635.73	3		
541	589277.06	1081638.51	3		
542	589277.68	1081638.83	3		
543	589276.68	1081640.83	3		
544	589276.07	1081640.48	4		
545	589282.04	1081636.15	3		
546	589282.17	1081636.84	3		
547	589282.71	1081636.36	3		
548	589218.49	1081558.04	3		
549	589283.11	1081635.32	3		
550	589282.57	1081635.37	4	589282.57	1081634.79
551	589282.47	1081635.56	4	589282.48	1081634.98
552	589282.28	1081634.90	3		
553	589282.15	1081635.19	3		
554	589282.33	1081635.86	4	589282.35	1081635.28
555	589284.42	1081637.44	3		
556	589284.60	1081636.86	3		
557	589286.93	1081638.37	3		
558	589286.86	1081637.71	3		
559	589287.50	1081638.00	3		
560	589288.34	1081636.42	4		
561	589288.18	1081636.33	4		
562	589288.27	1081636.13	3		
563	589287.98	1081635.99	3		
564	589287.88	1081636.19	4		
565	589290.60	1081640.31	3		
566	589290.88	1081639.79	3		
567	589293.12	1081641.71	3		
568	589293.38	1081641.17	3		
569	589297.14	1081643.45	3		
570	589297.32	1081642.87	3		

571	589299.02	1081643.76	3
572	589299.20	1081643.18	3
573	589303.67	1081645.80	3
574	589303.85	1081645.22	3
575	589305.70	1081646.15	3
576	589305.66	1081645.53	3
577	589306.36	1081645.93	3
578	589306.34	1081645.31	3
579	589306.46	1081645.96	3
580	589306.60	1081645.38	3
581	589307.82	1081646.26	3
582	589308.82	1081645.87	3
583	589308.85	1081646.58	3
584	589219.22	1081570.85	3
585	589219.78	1081570.15	3
586	589215.80	1081568.10	3
587	589216.40	1081567.44	3
588	589213.60	1081565.86	3
589	589214.76	1081565.76	3
590	589215.06	1081563.73	3
591	589215.99	1081564.05	3
592	589215.35	1081563.20	3
593	589216.69	1081561.15	3
594	589217.51	1081561.71	3
595	589218.63	1081558.42	3
596	589219.36	1081559.11	3
597	589219.32	1081558.28	3
598	589219.07	1081557.60	3
599	589214.42	1081555.13	3
600	589215.36	1081554.95	3
601	589215.09	1081554.07	4
602	589215.25	1081554.19	4
603	589215.38	1081554.01	3
604	589215.64	1081554.20	3
605	589215.51	1081554.38	4
606	589215.66	1081554.49	4
607	589220.50	1081559.37	3
608	589220.30	1081558.51	3
609	589221.72	1081558.45	3
610	589226.99	1081550.66	3
611	589226.55	1081549.87	3
612	589226.36	1081549.76	3
613	589226.53	1081549.49	3
614	589226.72	1081549.61	3
615	589226.97	1081549.22	3
616	589227.68	1081549.60	3
617	589229.03	1081546.30	3
618	589229.69	1081546.76	3
619	589230.99	1081543.34	3
620	589231.67	1081543.78	3
621	589233.30	1081539.69	3
622	589233.12	1081539.56	3
623	589233.30	1081539.30	3
624	589233.48	1081539.43	3
625	589235.69	1081536.07	3
626	589236.35	1081536.51	3
627	589237.99	1081532.67	3
628	589238.65	1081533.13	3
629	589241.36	1081527.86	3
630	589242.12	1081528.17	3
631	589241.84	1081527.32	3
632	589241.20	1081527.62	3
633	589241.32	1081527.43	3
634	589241.14	1081527.31	3
635	589241.31	1081527.05	3
636	589241.50	1081527.17	3
637	589243.18	1081526.00	3
638	589243.57	1081526.74	3
639	589244.04	1081526.21	3
640	589249.58	1081530.51	3
641	589249.36	1081529.55	3
642	589250.44	1081529.18	3
643	589250.10	1081528.42	3
644	589250.77	1081529.24	4
645	589250.98	1081529.38	3
646	589251.41	1081528.72	3
647	589251.21	1081528.58	4

648	589244.68	1081524.14	3
649	589245.46	1081524.44	3
650	589245.18	1081522.98	3
651	589245.99	1081522.94	3
652	589246.38	1081523.41	3
653	589247.77	1081521.88	3
654	589248.05	1081522.42	3
655	589251.86	1081520.04	3
656	589252.12	1081520.58	3
657	589254.67	1081518.64	3
658	589254.89	1081519.20	3
659	589256.34	1081518.13	3
660	589256.52	1081518.69	3
661	589257.98	1081517.55	3
662	589258.18	1081518.11	3
663	589245.95	1081521.48	3
664	589246.61	1081521.72	3
665	589246.17	1081520.39	3
666	589246.89	1081520.35	3
667	589245.89	1081519.53	3
668	589246.49	1081519.11	3
669	589244.54	1081518.53	3
670	589244.94	1081517.97	3
671	589241.74	1081516.58	3
672	589242.68	1081516.38	3
673	589243.21	1081514.17	3
674	589243.79	1081514.57	3
675	589244.57	1081512.20	4
676	589244.70	1081511.99	3
677	589245.42	1081512.47	3
678	589245.29	1081512.67	4
679	589213.60	1081562.65	3
680	589213.98	1081562.17	3
681	589209.36	1081559.08	3
682	589209.74	1081558.62	3
683	589203.75	1081554.39	3
684	589204.13	1081553.91	3
685	589198.81	1081550.69	3
686	589199.17	1081550.21	3
687	589193.79	1081546.63	3
688	589194.17	1081546.17	3
689	589193.43	1081545.54	3
690	589187.68	1081540.88	3
691	589186.58	1081540.77	3
692	589187.20	1081540.50	3
693	589186.63	1081540.10	3
694	589188.17	1081539.19	3
695	589187.63	1081538.75	3
696	589189.63	1081537.53	3
697	589189.47	1081536.65	3
698	589191.37	1081538.45	3
699	589191.29	1081537.61	3
700	589192.42	1081537.54	4
701	589192.57	1081537.34	3
702	589192.07	1081536.97	3
703	589191.92	1081537.18	4
704	589184.67	1081539.62	3
705	589185.07	1081539.16	3
706	589181.66	1081536.03	3
707	589182.10	1081535.63	3
708	589178.97	1081533.24	3
709	589179.41	1081532.84	3
710	589177.39	1081531.33	3
711	589178.13	1081531.29	3
712	589181.16	1081525.66	3
713	589181.66	1081526.00	3
714	589184.17	1081521.51	3
715	589184.65	1081521.87	3
716	589187.61	1081516.70	3
717	589188.37	1081516.66	3
718	589186.80	1081515.78	4
719	589187.15	1081515.27	4
720	589187.29	1081515.08	4
721	589187.08	1081514.94	3
722	589186.47	1081515.83	3
723	589186.67	1081515.98	4
724	589203.76	1081584.84	3

725	589204.22	1081584.18	3
726	589199.16	1081581.51	3
727	589199.68	1081580.89	3
728	589195.03	1081577.62	3
729	589195.55	1081577.02	3
730	589193.56	1081576.49	3
731	589193.80	1081575.67	3
732	589193.02	1081576.05	3
733	589191.08	1081579.27	3
734	589190.56	1081578.79	3
735	589188.86	1081581.62	4
736	589188.72	1081581.49	4
737	589188.57	1081581.65	3
738	589188.33	1081581.44	3
739	589188.48	1081581.27	4
740	589188.34	1081581.15	4
741	589189.89	1081573.34	3
742	589190.41	1081572.74	3
743	589184.99	1081568.97	3
744	589185.49	1081568.35	3
745	589181.19	1081566.28	3
746	589181.41	1081565.46	3
747	589180.64	1081565.84	3
748	589178.04	1081570.06	3
749	589177.52	1081569.60	3
750	589174.66	1081573.52	3
751	589174.20	1081572.99	3
752	589175.63	1081561.31	3
753	589176.15	1081560.71	3
754	589171.39	1081557.83	3
755	589171.89	1081557.21	3
756	589166.01	1081553.58	3
757	589166.53	1081552.98	3
758	589162.35	1081550.01	3
759	589162.89	1081549.43	3
760	589160.11	1081547.98	3
761	589160.63	1081547.36	3
762	589156.72	1081545.30	3
763	589157.26	1081544.70	3
764	589152.34	1081540.89	3
765	589152.94	1081540.35	3
766	589149.74	1081537.59	3
767	589150.54	1081537.32	3
768	589149.97	1081536.76	3
769	589150.75	1081537.08	4
770	589150.58	1081536.92	4
771	589150.73	1081536.76	3
772	589150.49	1081536.54	3
773	589150.34	1081536.70	4
774	589150.16	1081536.54	4
775	589146.66	1081535.21	3
776	589147.16	1081534.59	3
777	589144.59	1081533.43	3
778	589144.75	1081532.51	3
779	589142.90	1081534.11	3
780	589143.06	1081533.19	3
781	589140.01	1081531.57	3
782	589140.82	1081531.22	3
783	589140.31	1081530.74	3
784	589141.22	1081530.78	3
785	589140.71	1081530.30	3
786	589138.01	1081529.55	3
787	589138.32	1081528.72	3
788	589137.49	1081529.09	3
789	589135.68	1081531.92	3
790	589135.14	1081531.46	3
791	589134.28	1081533.84	3
792	589133.67	1081533.49	3
793	589134.96	1081527.13	3
794	589135.56	1081526.59	3
795	589132.79	1081523.63	3
796	589133.45	1081523.19	3
797	589132.30	1081522.95	3
798	589132.80	1081522.27	3
799	589131.98	1081522.33	3
800	589130.90	1081523.84	3
801	589130.52	1081523.26	3

802	589129.38	1081524.91	3
803	589128.52	1081524.65	3
804	589129.85	1081526.05	3
805	589129.01	1081525.85	3
806	589128.95	1081526.85	3
807	589128.57	1081526.25	3
808	589130.95	1081516.59	3
809	589130.19	1081516.83	3
810	589129.30	1081511.45	3
811	589128.54	1081511.71	3
812	589128.24	1081508.44	3
813	589127.60	1081509.02	3
814	589127.39	1081508.35	3
815	589123.85	1081510.30	3
816	589123.61	1081509.64	3
817	589122.87	1081510.68	4
818	589122.62	1081510.02	4
819	589127.30	1081504.72	3
820	589126.52	1081504.92	3
821	589126.51	1081501.28	3
822	589125.55	1081501.24	3
823	589126.32	1081500.71	3
824	589127.32	1081501.05	4
825	589127.28	1081500.92	4
826	589127.40	1081500.88	3
827	589127.30	1081500.56	3
828	589127.18	1081500.60	4
829	589127.15	1081500.48	4
830	589124.51	1081495.50	3
831	589123.41	1081495.07	3
832	589124.26	1081494.78	3
833	589125.49	1081495.04	4
834	589125.73	1081494.97	3
835	589125.55	1081494.37	3
836	589125.31	1081494.44	4
837	589122.42	1081491.85	3
838	589123.10	1081491.65	3
839	589121.03	1081486.55	3
840	589121.71	1081486.35	3
841	589119.63	1081482.36	3
842	589120.29	1081482.14	3
843	589117.97	1081477.68	3
844	589118.63	1081477.44	3
845	589115.17	1081470.53	3
846	589115.83	1081470.27	3
847	589112.84	1081464.37	3
848	589113.50	1081464.11	3
849	589110.56	1081458.78	3
850	589111.22	1081458.52	3
851	589108.34	1081452.68	3
852	589109.00	1081452.42	3
853	589106.37	1081447.84	3
854	589107.01	1081447.56	3
855	589105.27	1081445.32	3
856	589105.87	1081444.94	3
857	589102.40	1081442.24	3
858	589103.00	1081441.84	3
859	589099.75	1081436.27	3
860	589100.54	1081436.33	3
861	589100.50	1081435.53	3
862	589102.66	1081436.74	3
863	589102.82	1081436.06	3
864	589105.91	1081437.58	3
865	589106.09	1081436.90	3
866	589096.46	1081435.45	3
867	589096.70	1081434.59	3
868	589093.42	1081434.47	3
869	589093.74	1081433.63	3
870	589091.20	1081432.57	3
871	589092.16	1081430.20	3
872	589090.02	1081433.05	3
873	589091.34	1081429.84	3
874	589094.70	1081424.58	3
875	589093.88	1081424.22	3
876	589096.69	1081419.66	3
877	589095.85	1081419.34	3
878	589097.75	1081416.64	3

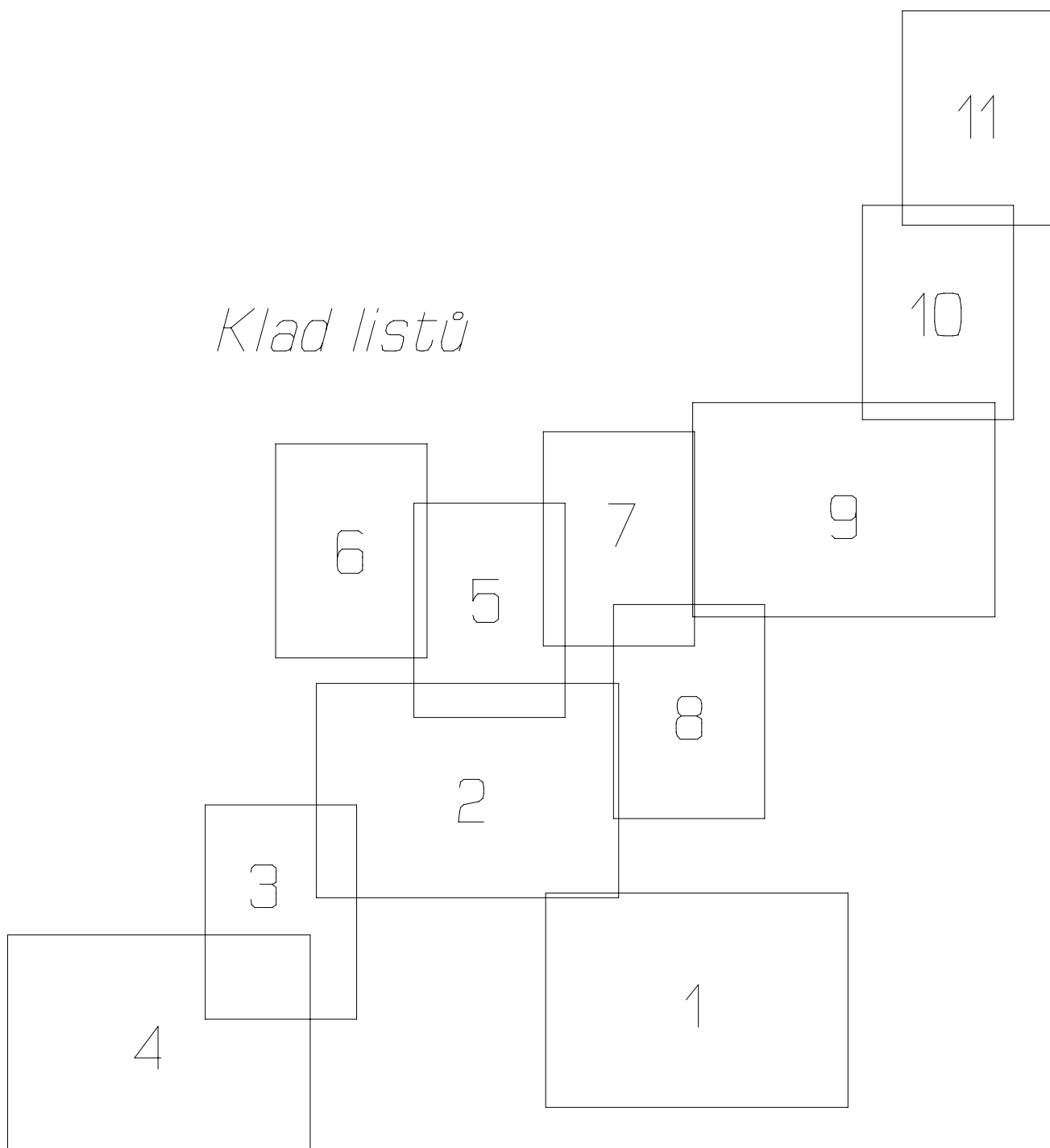
879	589096.99	1081416.08	3
880	589099.17	1081415.60	3
881	589098.95	1081414.66	3
882	589101.84	1081416.05	3
883	589102.12	1081415.18	3
884	589106.36	1081417.22	3
885	589106.34	1081416.28	3
886	589107.83	1081416.78	3
887	589107.35	1081415.98	3
888	589110.24	1081414.25	3
889	589109.88	1081413.32	3
890	589110.53	1081413.59	3
891	589111.55	1081413.75	3
892	589111.30	1081414.41	3
893	589111.44	1081411.89	3
894	589111.10	1081411.03	3
895	589114.92	1081413.05	3
896	589115.18	1081412.39	3
897	589117.68	1081414.28	3
898	589118.56	1081413.90	3
899	589116.48	1081419.87	3
900	589115.96	1081419.25	3
901	589115.35	1081420.05	3
902	589115.63	1081419.24	3
910	589136.22	1081653.77	4
911	589137.65	1081653.73	4
912	589143.05	1081649.39	4
913	589158.85	1081631.27	4
914	589183.97	1081613.61	4
915	589183.74	1081614.53	3
916	589184.20	1081615.07	3
917	589182.96	1081616.49	4
918	589182.09	1081617.34	4
919	589187.19	1081610.81	4
920	589221.01	1081572.40	4
921	589221.89	1081571.55	4
922	589243.10	1081578.53	4
923	589243.69	1081578.90	4
924	589261.05	1081597.37	4
925	589260.09	1081596.85	4
926	589250.51	1081618.09	4
927	589282.79	1081636.63	4
928	589283.51	1081636.92	4
929	589297.72	1081642.94	4
930	589304.37	1081645.92	4
931	589214.71	1081566.99	4
932	589215.27	1081566.29	4
933	589214.83	1081564.06	4
934	589215.54	1081564.67	4
935	589220.17	1081559.30	4
936	589249.42	1081521.14	4
937	589250.14	1081521.48	4
938	589254.39	1081519.45	3
939	589254.79	1081519.25	3
940	589246.74	1081519.88	4
941	589245.71	1081519.40	4
942	589202.08	1081582.63	4
943	589201.65	1081583.31	4
944	589201.10	1081582.91	4
945	589192.38	1081577.82	3
946	589191.84	1081577.37	3
947	589180.15	1081567.52	3
948	589179.63	1081567.06	3
949	589177.05	1081571.07	4
950	589176.54	1081570.60	4
951	589176.09	1081571.06	3
952	589174.56	1081573.41	3
953	589166.77	1081554.18	3
954	589167.09	1081553.42	4
955	589162.08	1081549.76	4
956	589158.30	1081545.52	4
957	589134.40	1081533.67	4
958	589133.83	1081533.27	4
959	589129.16	1081526.66	4
960	589128.76	1081526.07	4
961	589104.47	1081444.46	4
962	589104.89	1081443.88	4

589282.80 1081636.12

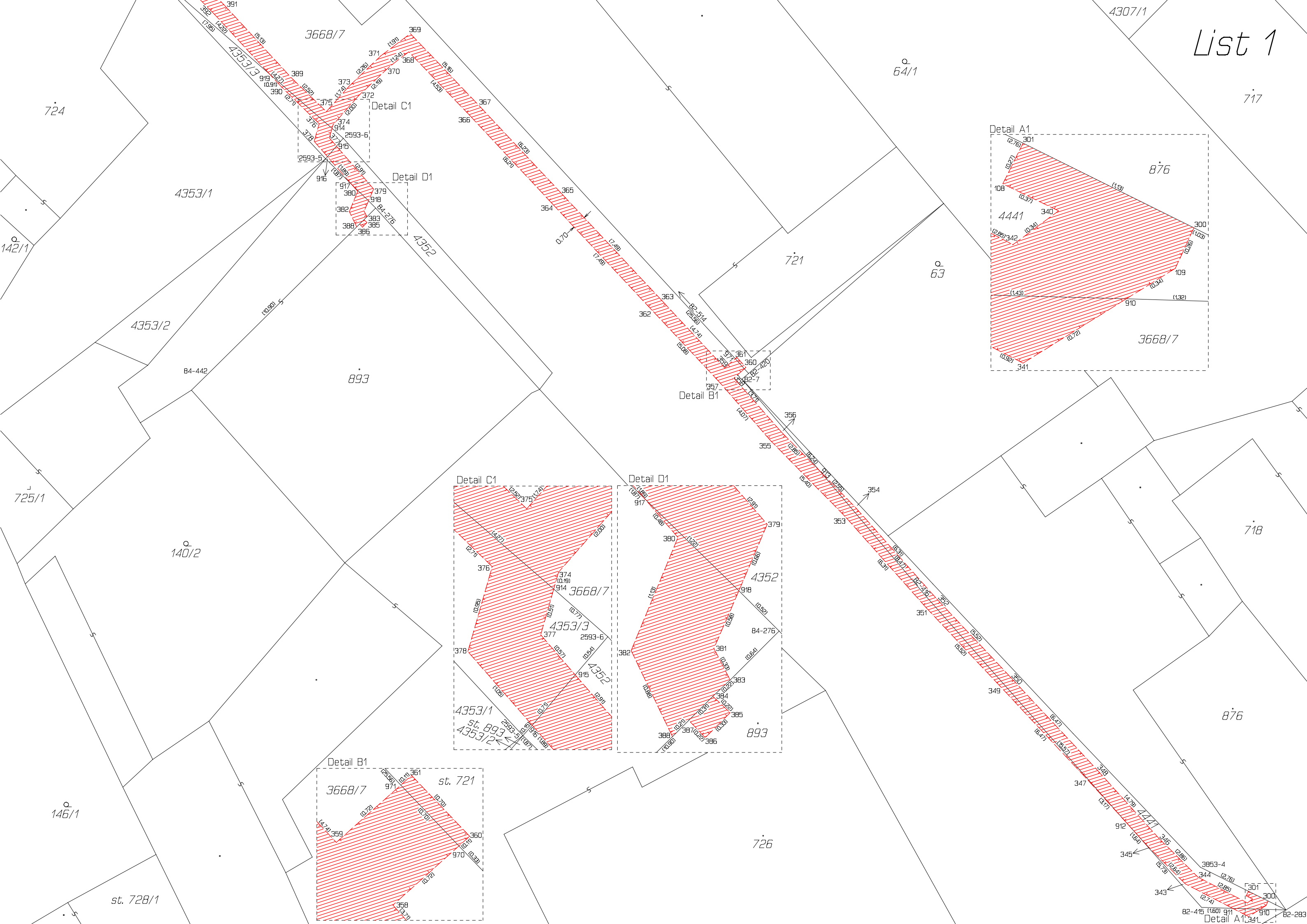
963	589091.79	1081431.10	4
964	589090.97	1081430.73	4
965	589104.97	1081416.86	4
966	589105.32	1081416.01	4
967	589109.02	1081415.53	3
968	589108.16	1081415.12	3
969	589254.39	1081518.78	4
970	589162.76	1081625.98	4
971	589163.23	1081625.46	4

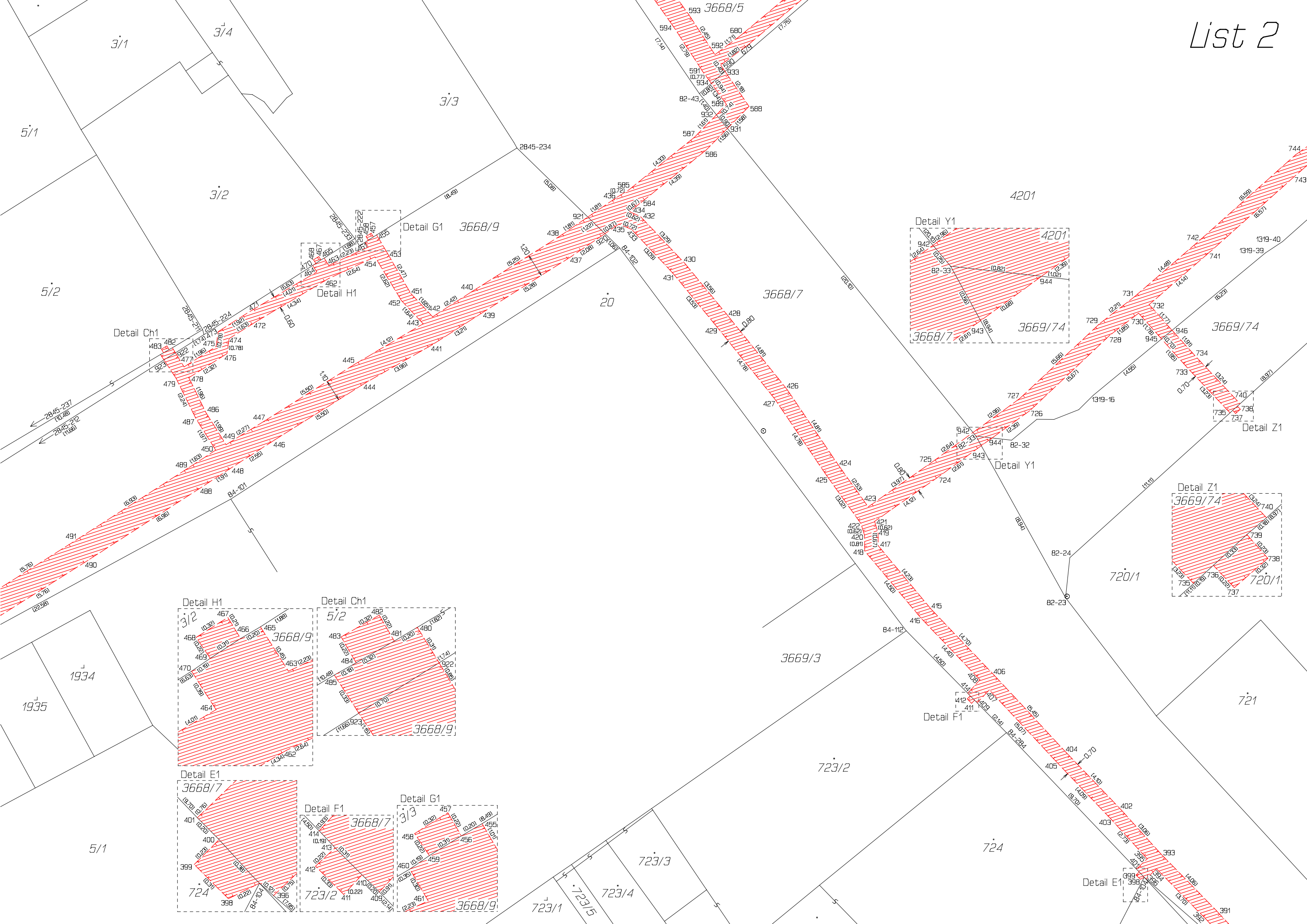
Souřadnice bodů na dosavadní hranici pozemku určené měřením v terénu budou pro zápis do katastru nemovitostí upraveny podle dosavadního určení hranice lomovými body s kódem charakteristiky kvality souřadnic vyšším než 3. Důvodem je nerealizované zpřesnění této hranice, ke kterému je nutné doložit listinu prokazující shodu vlastníků na jejím průběhu [§ 50 odst. 1 písm. a) katastrálního zákona].

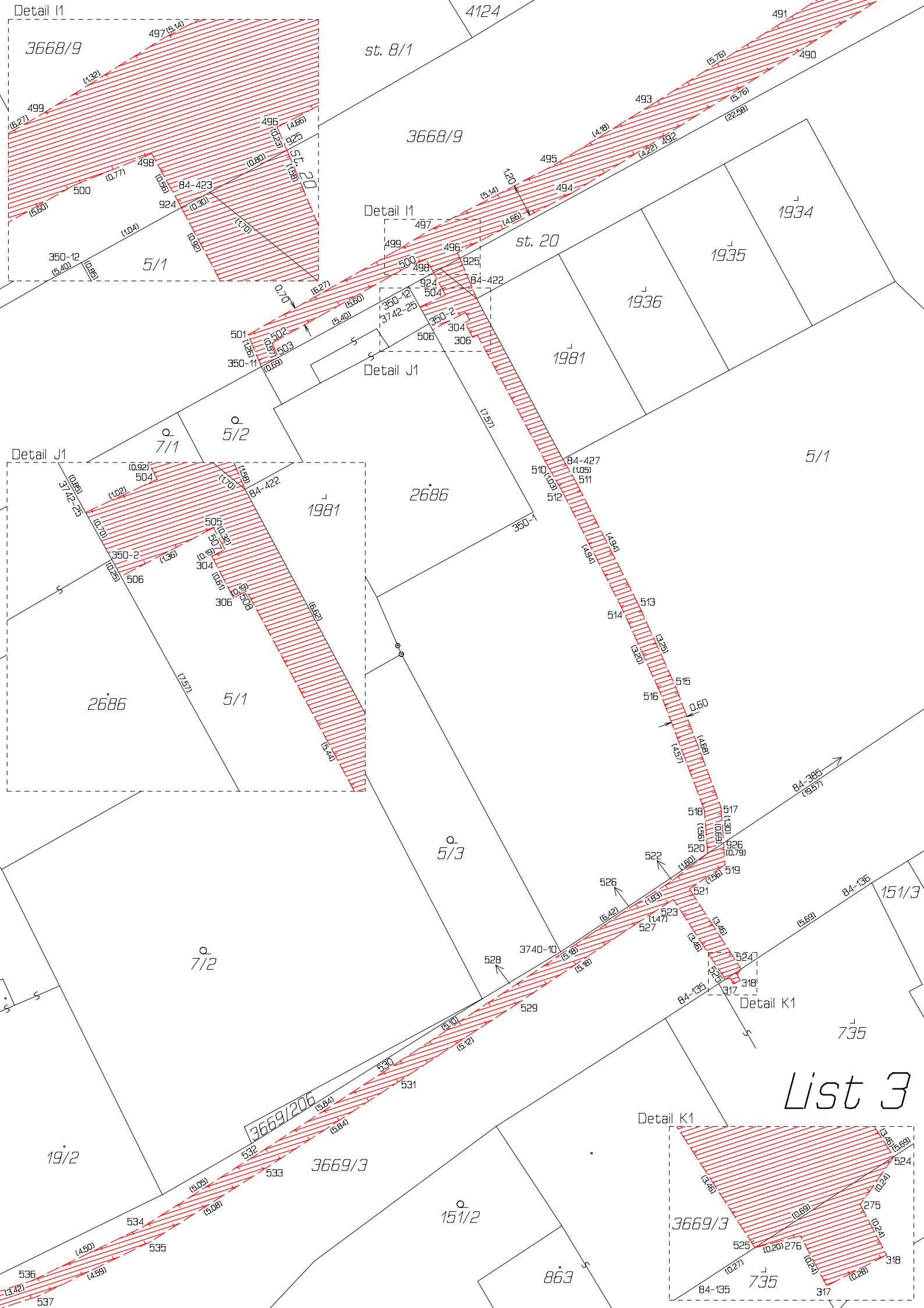
Klad listů



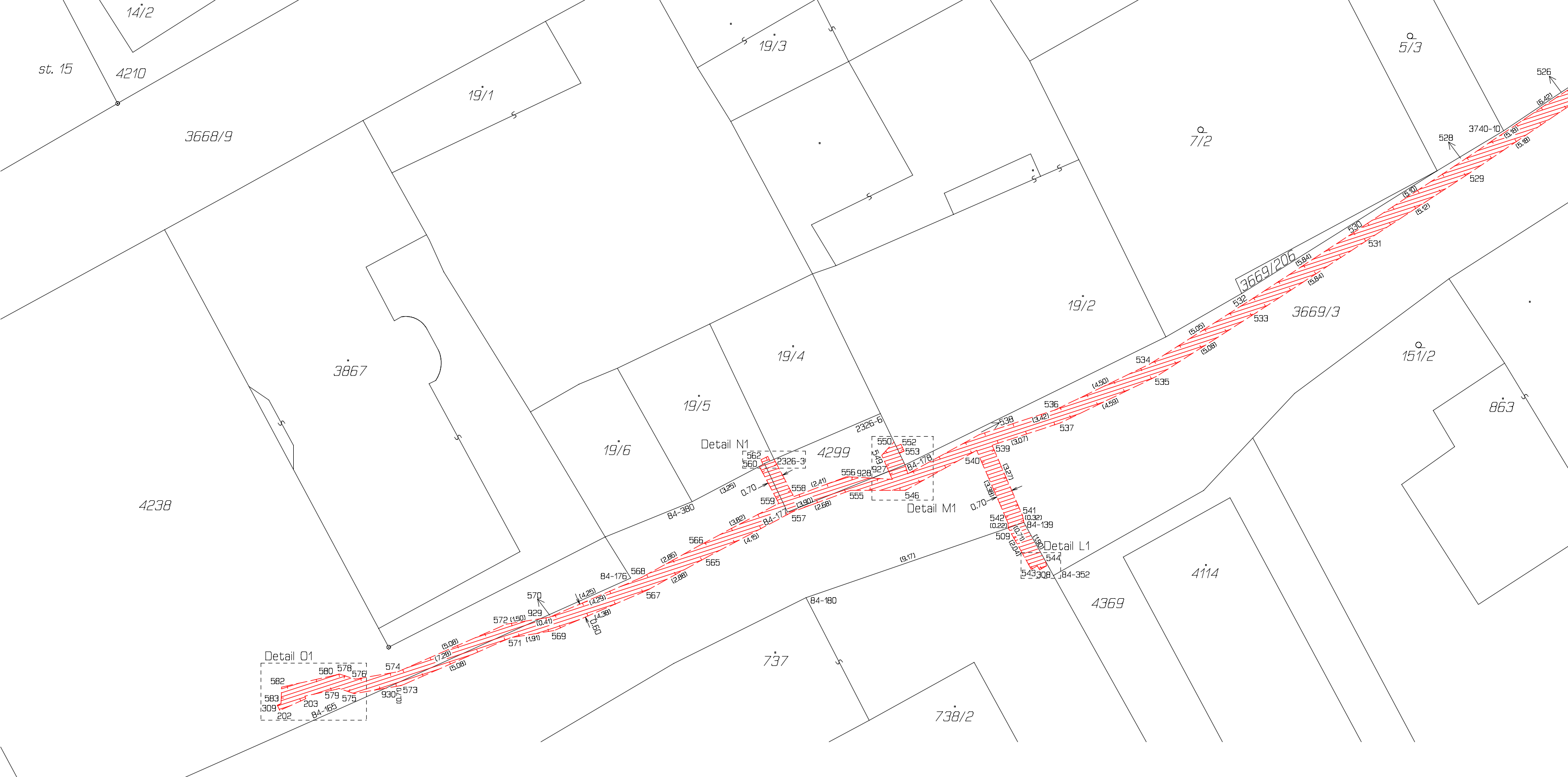
List 1



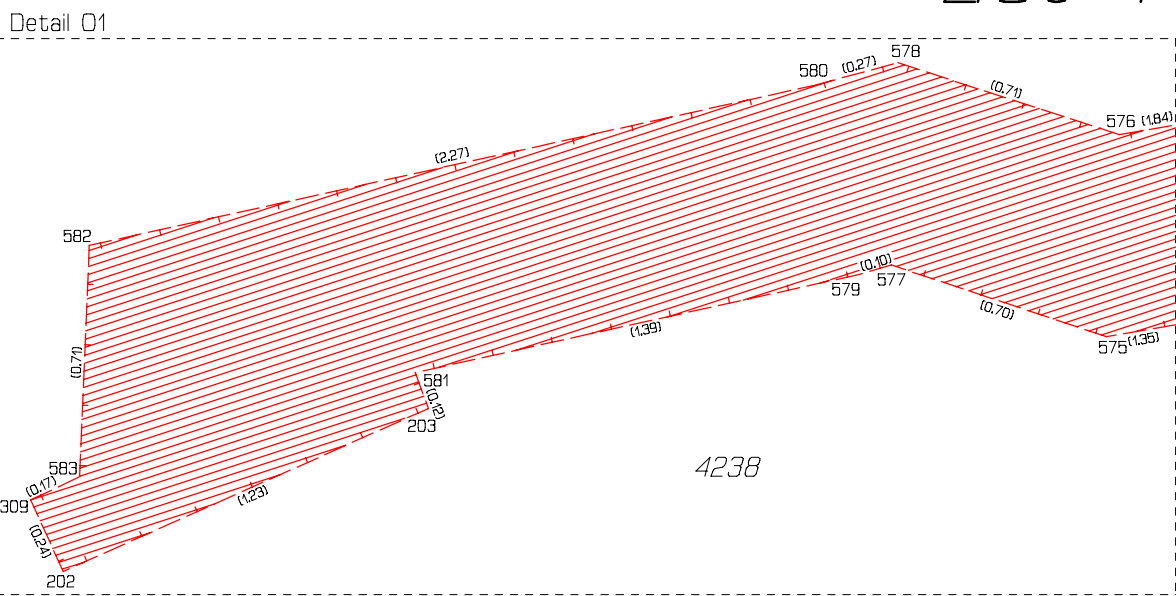
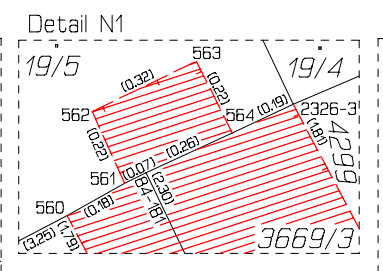
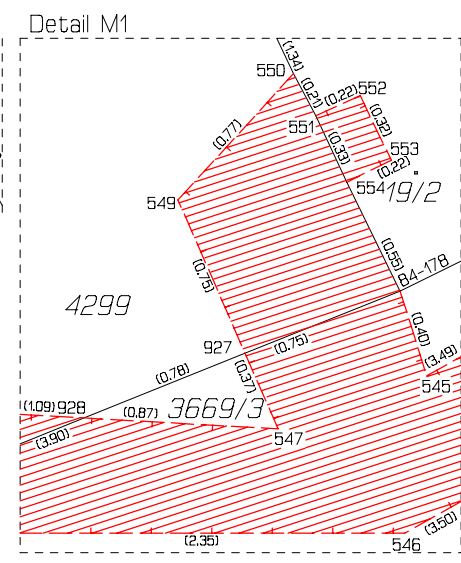
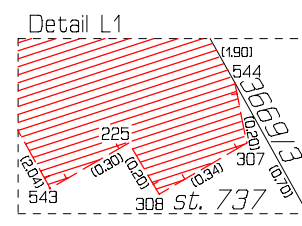


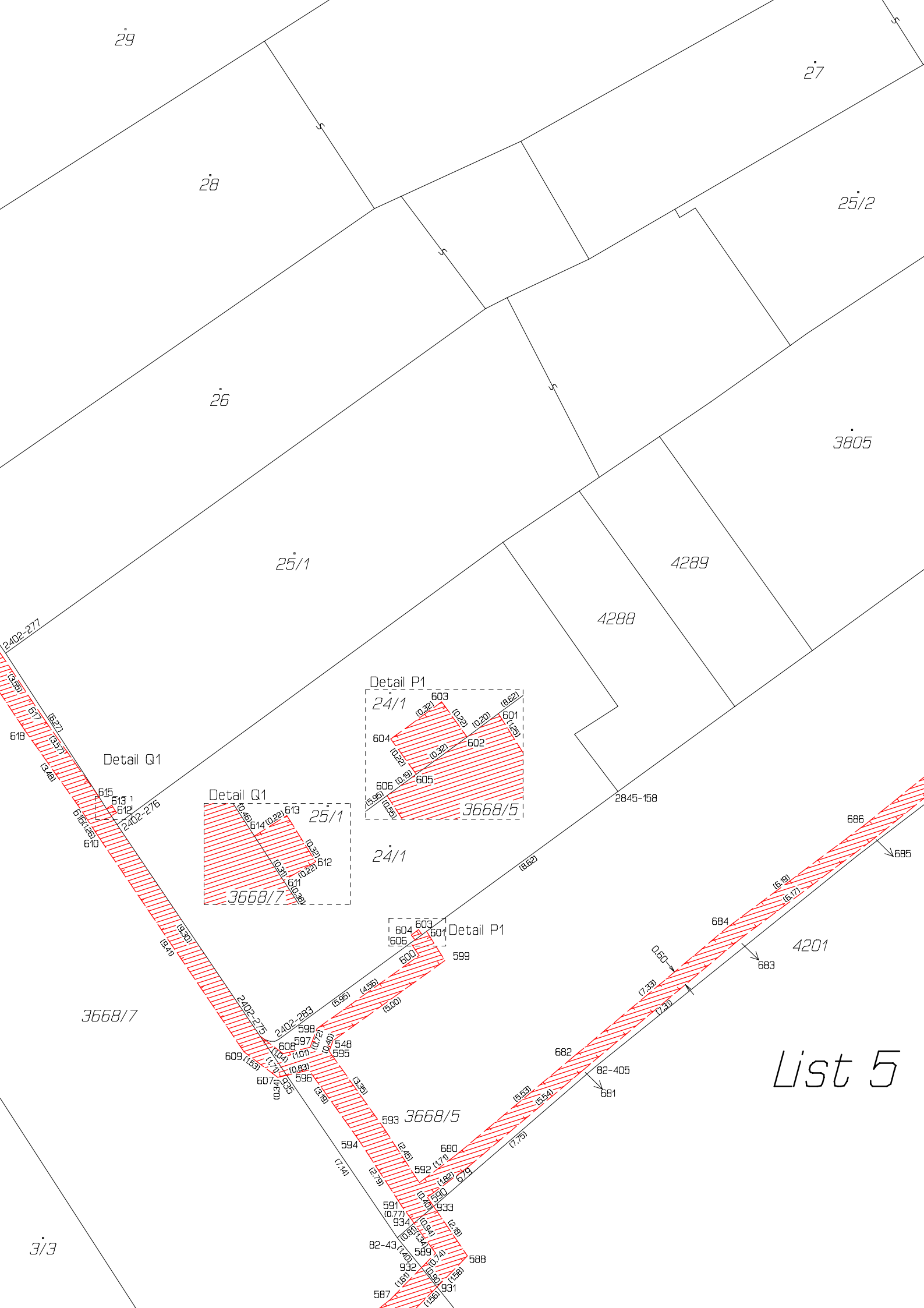


List 3



List 4





29

27

28

25/2

26

3805

25/1

4289

4288

2845-158

Detail Q1

Detail P1

Detail Q1

Detail P1

3668/7

24/1

24/1

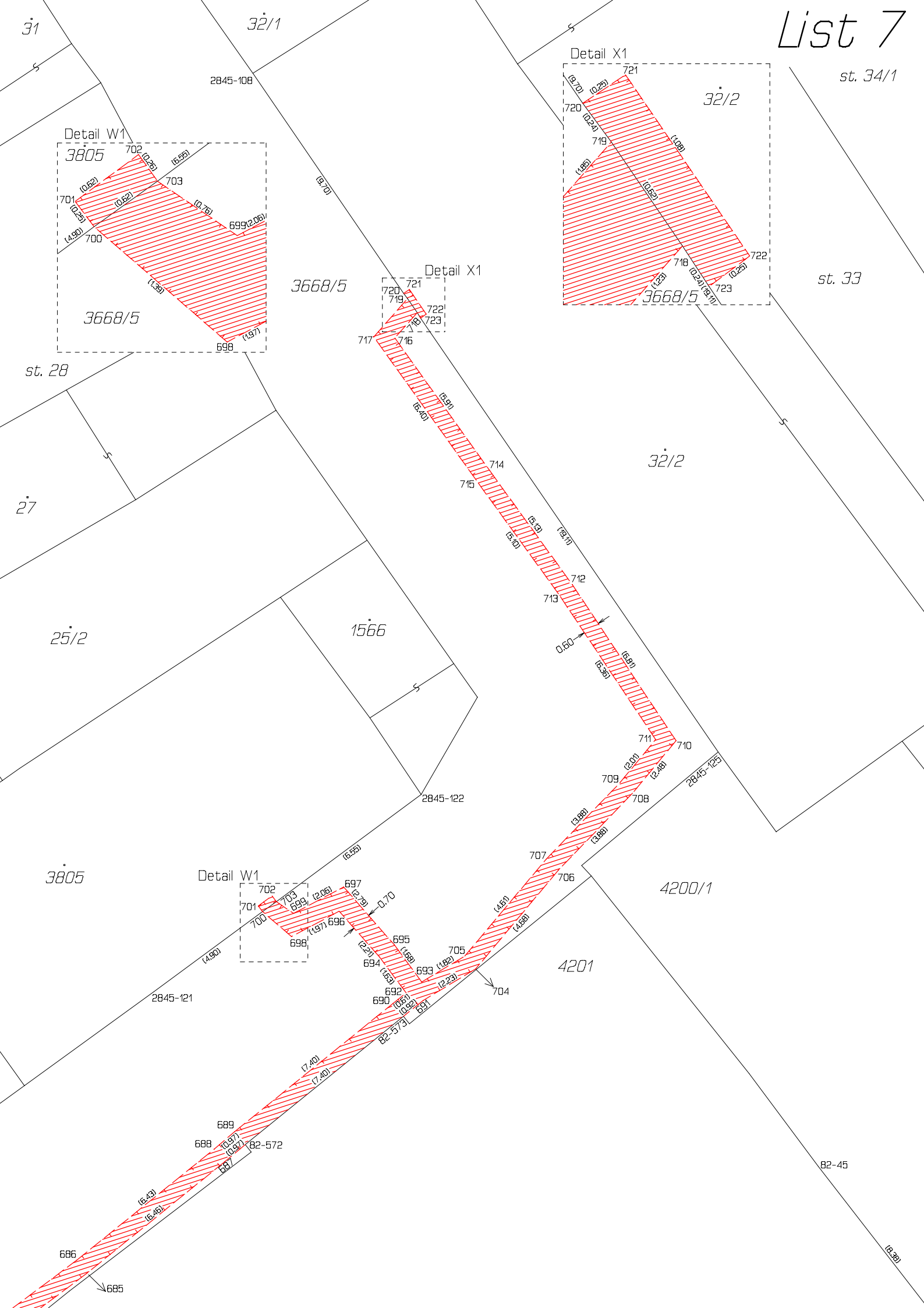
24/1

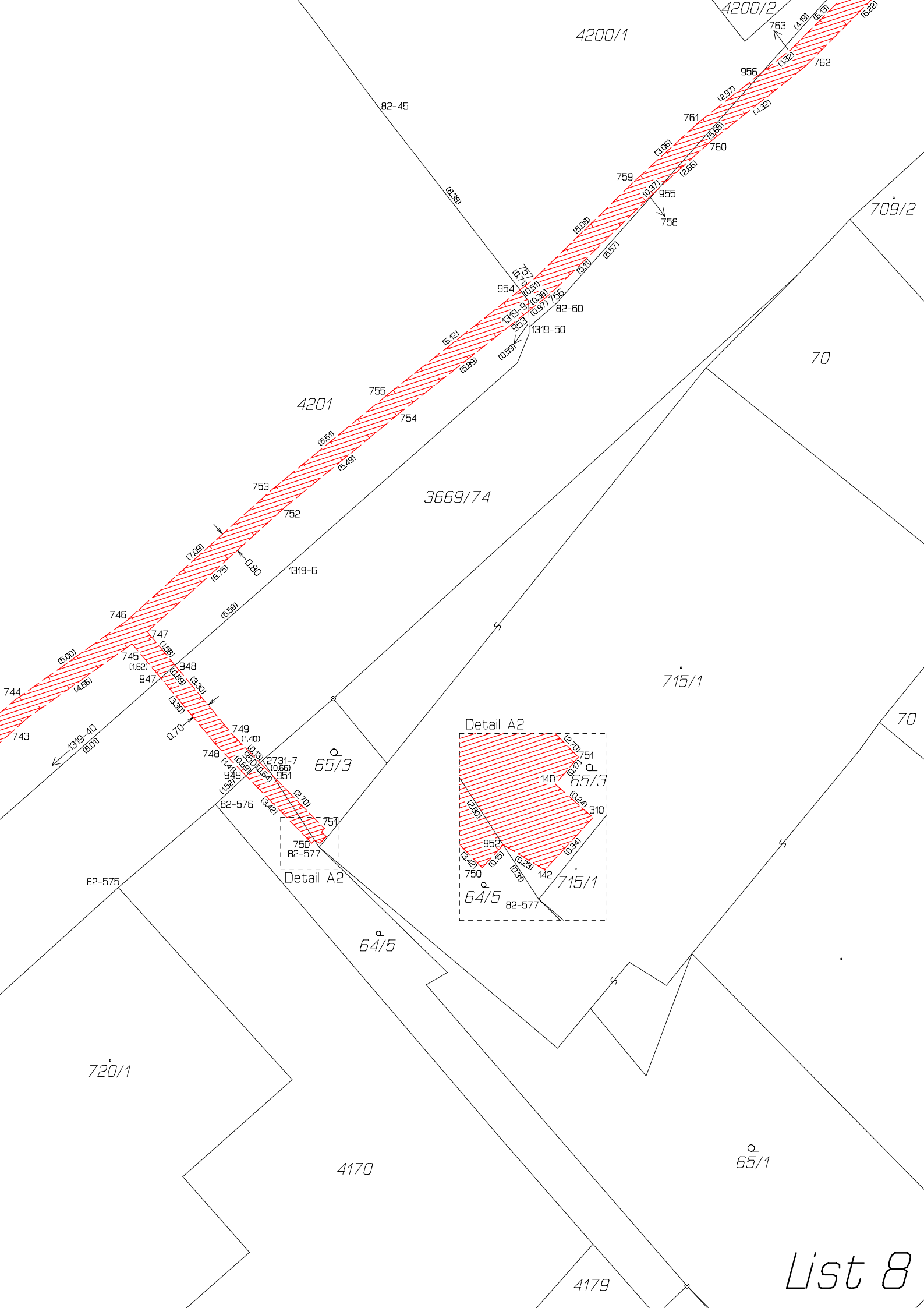
3668/5

List 5

3/3

List 7





4200/1

4200/2

709/2

70

4201

3669/74

715/1

70

Detail A2

65/3

Detail A2

64/5

715/1

720/1

4170

65/1

4179

List 8

82-45

82-60

1319-50

1319-6

82-576

82-577

751

750

749

748

948

947

949

950

951

952

953

954

955

956

761

760

759

758

757

756

755

754

753

752

751

750

749

748

747

746

745

744

743

742

741

740

739

738

737

736

735

734

733

732

731

730

729

728

727

726

725

724

723

722

721

720

719

718

717

716

82-45

82-60

1319-50

1319-6

82-576

82-577

751

750

749

748

948

947

949

950

951

952

953

954

955

956

761

760

759

758

757

756

755

754

753

752

751

750

749

748

747

746

745

744

743

742

741

740

739

738

737

736

735

734

733

732

731

730

729

728

727

726

725

724

723

722

721

720

719

718

717

716

82-45

82-60

1319-50

1319-6

82-576

82-577

751

750

749

748

948

947

949

950

951

952

953

954

955

956

761

760

759

758

757

756

755

754

753

752

751

750

749

748

747

746

745

744

743

742

741

740

739

738

737

736

735

734

733

732

731

730

729

728

727

726

725

724

723

722

721

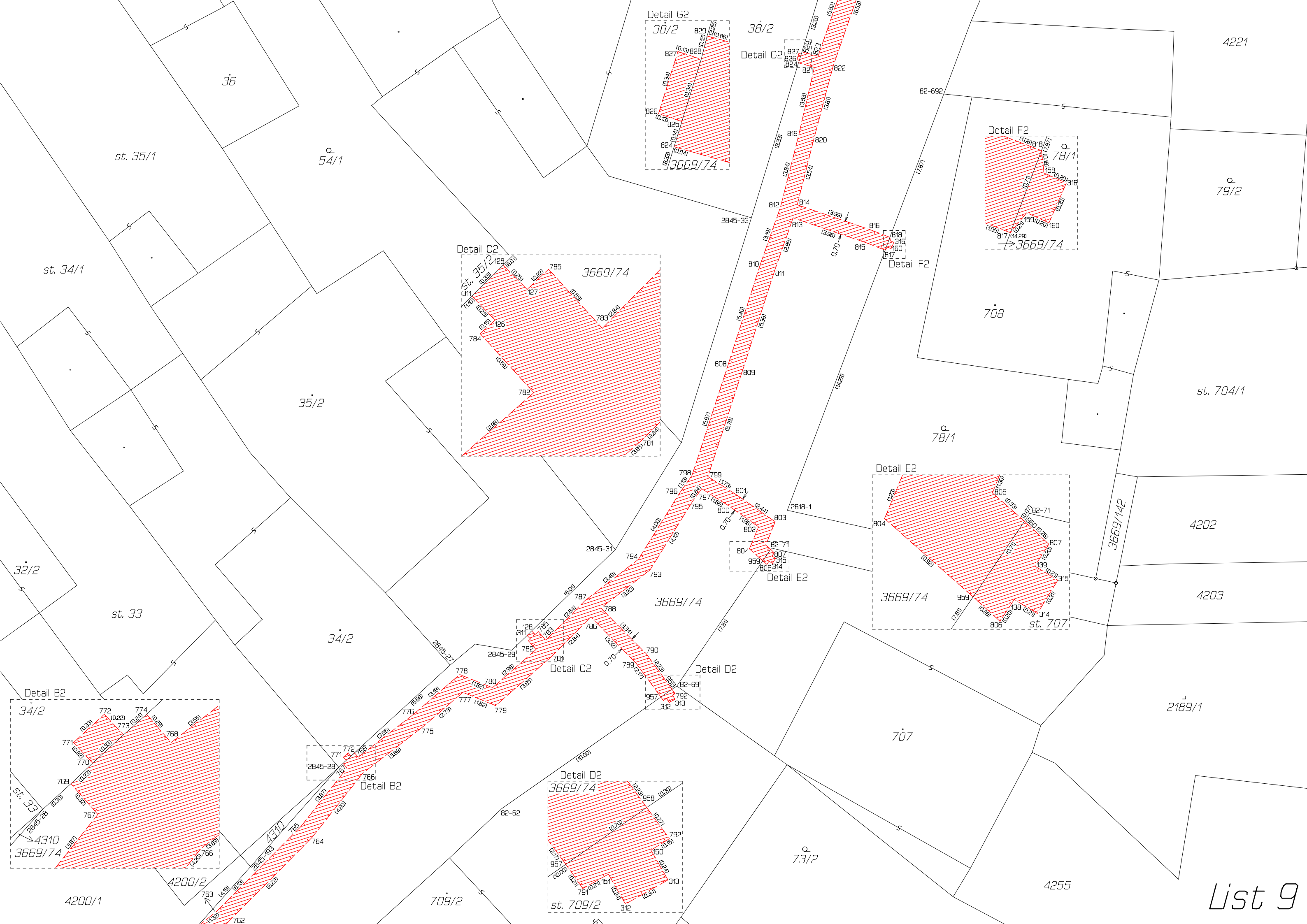
720

719

718

717

716





697

st. 695

41/1

4378

850 849

698

4379

848 847

846 845

0.70

844 843

700/4

3767

3669/74

700/3

700/2

700/1

41/2

Detail H2

4253

41/2

699/2

Detail H2

st. 39

List 10

2845-66

2845-137

38/2

4221

Detail G2

827 826 824 821 822

