

VÝKAZ DOSAVADNÍHO A NOVÉHO STAVU ÚDAJŮ KATASTRU NEMOVITOSTÍ

Dosavadní stav			Nový stav					Porovnání se stavem evidence právních vztahů							
Označení pozemku parc. číslem	Výměra parcely		Označení pozemku parc. číslem	Výměra parcely		Druh pozemku	Typ stavby	Způsob využití	Způsob určení výměr	Díl přechází z pozemku označeného v katastru nemovitostí		Číslo listu vlastnictví	Výměra dílu		Označení dílu
	ha	m ²		Způsob využití	ha					m ²	Způsob využití		Způsob využití	ha	
75										75		10001			
76										76		10001			
218/1										218/1		10001			
218/2										218/2		10001			
218/3										218/3		10001			
304										304		10001			
465										465		10001			
533/1										533/1		10001			
533/2										533/2		60000			
962										962		10001			
964										964		10001			
968										968		514			
970/2										970/2		3753			

Oprávněný: Dle listin

Druh věcného břemene: Dle listin

GEOMETRICKÝ PLÁN pro vymezení rozsahu věcného břemene k části pozemku	Geometrický plán ověřil úředně oprávněný zeměměřický inženýr:		Stejnopis ověřil úředně oprávněný zeměměřický inženýr:		
	Jméno, příjmení: ██████████		Jméno, příjmení: ██████████		
	Číslo položky seznamu úředně oprávněných zeměměřických inženýrů: 2717/2015		Číslo položky seznamu úředně oprávněných zeměměřických inženýrů: 388/95		
	Dne: 19.3.2021 Číslo: 110/2021		Dne: 23.3.2021 Číslo: 1079/2021		
Náležitosti a přesnosti odpovídá právním předpisům.		Tento stejnopis odpovídá geometrickému plánu v elektronické podobě uloženému v dokumentaci katastrálního úřada.			
Vyhotovitel: GK GEO2007, s.r.o. Vrchní 1 691 63 Velké Němčice IČ: 27736458		Katastrální úřad souhlasí s očíslováním parcel.			
Číslo plánu: 1279-779/2020		KÚ pro Jihomoravský kraj KP Brno-město ██████████ PGP-568/2021-702 2021.03.23 07:42:09 CET			
Okres: Brno-město					
Obec: Brno					
Kat. území: Zábřovice					
Mapový list: Brno 8-0/11		Ověření stejnopisu geometrického plánu v listinné podobě.			
Dosavadním vlastníkům pozemků byla poskytnuta možnost seznámit se v terénu s průběhem navrhovaných nových hranic, které byly označeny předepsaným způsobem:					

Seznam souřadnic (S-JTSK)
 Číslo bodu Souřadnice pro zápis do KN

Y X Kód kv.

č.ú.	Y	X	Kód kv.
k.ú. Zábřdovice (610704)			
4-864	597278.49	1160101.14	6
4-965	597242.51	1160091.13	6
4-2136	596974.80	1160095.49	6
4-2137	596974.83	1160095.70	6
11-1428	596939.73	1160098.11	3
11-1605	596847.32	1160104.23	3
11-1606	596842.15	1160104.53	3
16-667	596856.63	1160182.36	6
16-673	596847.82	1160162.08	6
383-1249	596864.60	1160101.31	6
1	597487.38	1160399.53	3
2	597487.08	1160399.13	3
3	597489.87	1160397.71	3
4	597489.45	1160397.39	3
5	597490.49	1160396.05	3
6	597490.01	1160395.93	3
7	597491.16	1160391.29	3
8	597490.66	1160391.23	3
9	597491.39	1160388.45	3
10	597490.89	1160388.39	3
11	597497.42	1160349.46	3
12	597496.92	1160349.38	3
13	597498.27	1160344.40	3
14	597497.77	1160344.38	3
15	597497.67	1160342.51	3
16	597498.17	1160342.53	3
17	597499.38	1160334.94	3
18	597498.88	1160334.86	3
19	597500.43	1160328.06	3
20	597499.93	1160327.98	3
21	597502.37	1160316.08	3
22	597501.87	1160316.00	3
23	597503.16	1160310.17	3
24	597502.66	1160310.09	3
25	597503.89	1160305.91	3
26	597503.39	1160305.83	3
27	597505.55	1160295.22	3
28	597505.05	1160295.14	3
29	597507.65	1160282.34	3
30	597507.15	1160282.26	3
31	597509.27	1160271.91	3
32	597508.77	1160271.81	3
33	597509.51	1160270.91	3
34	597509.01	1160270.81	3
35	597509.35	1160268.76	3
36	597509.03	1160268.71	3
37	597509.10	1160268.21	3
38	597509.43	1160268.26	3
39	597512.11	1160254.79	3
40	597511.61	1160254.73	3
41	597511.76	1160252.92	3
42	597512.30	1160252.56	3
43	597513.07	1160248.18	3
44	597514.37	1160239.53	3
45	597516.08	1160229.92	3
46	597515.58	1160229.84	3
47	597515.92	1160227.59	3
48	597515.50	1160227.52	6
49	597515.57	1160227.02	6
50	597515.98	1160227.10	3
51	597516.45	1160227.42	3
52	597516.60	1160226.18	3
53	597516.10	1160226.10	3
54	597517.31	1160222.09	3
55	597516.81	1160222.01	3
56	597518.19	1160215.66	3
57	597517.69	1160215.58	3

č. b.	Y	X	KK
58	597518.85	1160212.53	3
59	597518.35	1160212.43	3
60	597519.83	1160206.05	3
61	597519.33	1160205.97	3
62	597521.30	1160196.47	3
63	597520.80	1160196.39	3
64	597522.90	1160186.95	3
65	597522.36	1160187.11	3
66	597521.92	1160187.01	6
67	597522.00	1160186.52	6
68	597522.44	1160186.61	3
69	597524.31	1160178.09	3
70	597523.81	1160178.01	3
71	597524.96	1160174.49	3
72	597524.46	1160174.41	3
73	597526.80	1160159.05	3
74	597527.44	1160158.17	3
75	597528.03	1160157.84	3
76	597527.65	1160157.28	3
77	597527.66	1160154.46	3
78	597528.16	1160154.56	3
79	597529.15	1160158.00	3
80	597529.25	1160157.52	3
81	597537.72	1160160.44	3
82	597537.86	1160159.96	3
83	597550.46	1160109.14	3
84	597550.66	1160108.68	3
85	597543.45	1160105.94	6
86	597543.49	1160106.24	6
87	597543.38	1160105.36	6
88	597543.35	1160105.10	6
89	597528.63	1160100.07	3
90	597532.11	1160110.50	3
91	597527.41	1160099.57	3
92	597525.65	1160098.89	3
93	597525.79	1160097.87	3
94	597520.64	1160099.48	3
95	597520.86	1160098.44	3
96	597519.54	1160097.67	3
97	597519.04	1160098.53	3
98	597531.93	1160109.96	6
99	597530.81	1160108.96	6
100	597530.44	1160108.63	6
101	597531.19	1160110.09	3
102	597525.64	1160112.80	3
103	597525.46	1160112.34	3
104	597513.57	1160117.87	3
105	597513.37	1160117.41	3
106	597509.23	1160119.78	3
107	597509.03	1160119.32	3
108	597500.16	1160123.61	3
109	597499.96	1160123.15	3
110	597492.74	1160126.62	3
111	597492.56	1160126.14	3
112	597489.46	1160127.68	3
113	597489.32	1160127.20	3
114	597483.04	1160129.53	3
115	597483.07	1160129.97	6
116	597482.58	1160130.09	6
117	597482.55	1160129.67	3
118	597480.32	1160130.31	3
119	597480.33	1160130.68	6
120	597479.83	1160130.81	6
121	597479.82	1160130.43	3
122	597480.00	1160129.88	3
123	597473.37	1160131.80	3
124	597473.51	1160132.46	6
125	597473.02	1160131.36	3
126	597472.88	1160131.89	3
127	597473.03	1160132.59	6

č.b.	Y	X	KK	č.b.	Y	X	KK
128	597466.78	1160132.83	3	198	597290.99	1160121.58	3
129	597466.46	1160132.37	3	199	597290.51	1160121.46	3
130	597466.29	1160132.90	3	200	597281.02	1160116.95	3
131	597466.45	1160134.09	6	201	597280.86	1160117.43	3
132	597466.95	1160134.02	6	202	597278.52	1160116.56	3
133	597463.67	1160132.74	3	203	597278.76	1160116.12	3
134	597463.75	1160133.24	3	204	597278.06	1160115.93	3
135	597453.94	1160134.79	3	205	597278.13	1160115.08	3
136	597454.08	1160135.74	4	206	597277.61	1160115.18	3
137	597453.59	1160135.80	4	207	597275.38	1160115.76	3
138	597453.45	1160134.86	3	208	597275.27	1160115.22	3
139	597448.33	1160135.59	3	209	597274.90	1160115.62	3
140	597448.34	1160136.32	6	210	597274.51	1160116.99	6
141	597447.84	1160136.36	6	211	597274.99	1160117.15	6
142	597447.83	1160135.69	3	214	597262.93	1160112.06	3
143	597447.58	1160135.20	3	215	597263.07	1160111.58	3
144	597406.15	1160137.17	3	216	597253.73	1160109.13	3
145	597406.15	1160136.67	3	217	597253.63	1160108.57	3
146	597405.06	1160136.66	3	218	597253.25	1160108.97	3
147	597405.04	1160137.16	3	219	597253.60	1160109.62	3
148	597400.92	1160136.90	3	220	597253.12	1160109.50	3
149	597400.70	1160136.38	3	221	597248.46	1160107.37	3
150	597400.42	1160136.87	3	222	597248.40	1160106.82	3
151	597400.34	1160137.85	3	223	597247.98	1160107.20	3
152	597400.84	1160137.89	3	224	597248.13	1160108.11	3
153	597391.02	1160136.58	3	225	597247.67	1160107.91	3
154	597391.04	1160136.08	3	226	597236.42	1160102.80	3
155	597381.61	1160136.20	3	227	597236.56	1160102.32	3
156	597381.65	1160135.70	3	228	597227.11	1160100.48	3
157	597375.29	1160135.54	3	229	597227.27	1160100.00	3
158	597375.33	1160135.04	3	230	597226.92	1160099.84	3
159	597368.63	1160134.96	3	231	597226.74	1160100.30	3
160	597368.43	1160134.44	3	232	597196.77	1160091.46	3
161	597368.13	1160134.95	3	233	597196.87	1160090.96	3
162	597367.18	1160134.97	3	234	597185.77	1160090.26	3
163	597366.98	1160134.48	3	235	597185.66	1160091.09	3
164	597366.68	1160134.95	3	236	597185.16	1160091.03	3
165	597368.36	1160136.71	6	237	597185.27	1160090.20	3
166	597367.86	1160136.68	6	238	597185.58	1160089.73	3
167	597366.96	1160136.32	3	239	597179.62	1160090.78	6
168	597366.46	1160136.24	3	240	597179.77	1160089.60	3
169	597365.85	1160134.86	3	241	597179.57	1160089.07	3
170	597365.91	1160134.36	3	242	597179.27	1160089.55	3
171	597361.91	1160133.67	3	243	597179.12	1160090.73	6
172	597361.83	1160134.17	3	244	597176.85	1160089.33	3
173	597348.09	1160132.07	3	245	597176.89	1160088.83	3
174	597348.13	1160131.57	3	246	597167.70	1160089.58	6
175	597347.48	1160131.54	3	247	597167.20	1160089.53	6
176	597347.44	1160132.04	3	248	597167.25	1160088.67	3
177	597341.14	1160131.12	3	249	597167.75	1160088.72	3
178	597341.22	1160130.62	3	250	597167.53	1160088.20	3
179	597334.95	1160130.00	3	251	597163.67	1160088.31	3
180	597335.03	1160129.50	3	252	597163.73	1160087.81	3
181	597328.86	1160129.06	3	253	597159.80	1160087.81	3
182	597328.94	1160128.56	3	254	597159.30	1160087.75	3
183	597325.29	1160128.34	3	255	597159.62	1160087.28	3
184	597325.39	1160127.84	3	256	597159.72	1160088.37	3
185	597314.99	1160126.42	3	257	597159.22	1160088.29	3
186	597314.81	1160127.49	3	258	597154.73	1160087.27	3
187	597314.31	1160127.41	3	259	597154.54	1160086.75	3
188	597314.50	1160126.33	3	260	597154.23	1160087.22	3
189	597306.31	1160124.82	3	261	597154.66	1160087.85	3
190	597306.16	1160124.29	3	262	597154.16	1160087.79	3
191	597305.82	1160124.72	3	263	597152.49	1160087.02	3
192	597306.20	1160125.60	3	264	597152.53	1160086.52	3
193	597305.70	1160125.52	3	265	597147.95	1160086.86	3
194	597301.34	1160123.74	3	266	597148.09	1160086.36	3
195	597301.46	1160123.26	3	267	597146.27	1160085.91	3
196	597291.22	1160120.58	3	268	597146.43	1160085.43	3
197	597290.74	1160120.43	3	269	597142.99	1160086.86	3

č.b.	Y	X	KK	č.b.	Y	X	KK
270	597143.01	1160085.60	3	340	597319.30	1160110.01	3
271	597142.78	1160085.08	3	341	597318.81	1160109.92	3
272	597142.49	1160086.86	3	342	597304.33	1160108.89	3
273	597142.51	1160085.57	3	343	597304.43	1160108.41	3
274	597133.16	1160085.07	3	344	597294.16	1160106.62	3
275	597133.16	1160084.57	3	345	597294.28	1160106.14	3
276	597127.04	1160085.17	3	346	597287.19	1160104.50	3
277	597126.79	1160084.67	3	347	597287.29	1160104.02	3
278	597126.54	1160085.17	3	348	597285.65	1160104.29	3
279	597126.56	1160086.85	6	349	597285.75	1160103.79	3
280	597127.06	1160086.87	6	350	597278.66	1160102.42	3
281	597115.85	1160085.01	3	351	597278.99	1160102.00	3
282	597115.85	1160084.51	3	352	597278.49	1160101.85	3
283	597108.05	1160085.25	3	353	597279.01	1160101.26	6
284	597108.03	1160084.75	3	354	597275.70	1160101.58	3
285	597102.84	1160085.11	3	355	597275.82	1160101.10	3
286	597103.12	1160085.59	3	356	597271.61	1160100.63	3
287	597102.62	1160085.64	3	357	597271.98	1160100.21	3
288	597103.18	1160086.75	6	358	597271.50	1160100.08	3
289	597102.68	1160086.77	6	359	597272.20	1160099.44	6
290	597101.56	1160085.75	3	360	597271.71	1160099.31	6
291	597101.52	1160085.25	3	361	597260.99	1160097.76	3
292	597094.30	1160086.02	3	362	597261.37	1160097.35	3
293	597094.28	1160085.52	3	363	597260.89	1160097.21	3
294	597087.07	1160086.44	3	364	597261.61	1160096.55	6
295	597086.78	1160085.96	3	365	597261.13	1160096.42	6
296	597086.57	1160086.48	3	366	597256.36	1160095.07	6
297	597087.18	1160087.75	6	367	597256.84	1160095.21	6
298	597086.68	1160087.78	6	368	597256.61	1160095.88	3
299	597068.85	1160087.67	3	369	597256.13	1160095.74	3
300	597068.55	1160087.19	3	370	597256.22	1160096.28	3
301	597067.98	1160089.10	6	371	597249.80	1160094.58	3
302	597067.37	1160089.14	6	372	597250.17	1160094.16	3
303	597278.42	1160113.64	3	373	597250.39	1160093.30	6
304	597277.94	1160113.52	3	374	597249.91	1160093.16	6
305	597279.95	1160109.03	3	375	597249.69	1160094.03	3
306	597279.47	1160108.89	3	376	597242.48	1160092.54	3
307	597281.00	1160105.48	3	377	597242.83	1160092.12	3
308	597280.52	1160105.38	3	378	597242.97	1160091.26	6
309	597281.17	1160104.35	3	379	597242.35	1160091.98	3
310	597280.67	1160104.37	3	380	597226.40	1160087.88	3
311	597280.32	1160102.94	3	381	597226.79	1160087.47	3
312	597280.87	1160103.08	3	382	597226.31	1160087.34	3
313	597367.11	1160117.69	6	383	597227.04	1160086.73	6
314	597366.62	1160117.63	6	384	597226.56	1160086.59	6
315	597366.89	1160119.65	3	385	597215.37	1160084.29	3
316	597366.41	1160119.41	3	386	597215.62	1160083.46	6
317	597366.10	1160120.37	3	387	597215.14	1160083.32	6
318	597365.92	1160119.85	3	388	597214.89	1160084.15	3
319	597360.10	1160119.78	3	389	597204.30	1160081.67	3
320	597360.16	1160119.28	3	390	597204.69	1160081.26	3
321	597350.20	1160118.42	3	391	597204.21	1160081.12	3
322	597350.28	1160117.92	3	392	597205.10	1160080.05	6
323	597349.39	1160118.26	6	393	597204.61	1160079.92	6
324	597349.43	1160117.76	6	394	597195.79	1160078.52	3
325	597341.61	1160116.81	3	395	597195.44	1160078.93	3
326	597341.95	1160116.36	3	396	597195.31	1160078.39	3
327	597341.46	1160116.27	3	397	597195.98	1160077.68	6
328	597342.22	1160114.99	3	398	597195.50	1160077.55	6
329	597341.72	1160114.89	3	399	597190.93	1160077.92	3
330	597340.03	1160115.98	6	400	597191.23	1160077.47	3
331	597339.98	1160116.48	6	401	597190.74	1160077.40	3
332	597331.38	1160114.75	3	402	597191.29	1160076.53	6
333	597331.72	1160114.31	3	403	597190.79	1160076.51	6
334	597331.23	1160114.21	3	404	597187.95	1160076.36	6
335	597332.10	1160112.31	6	405	597187.45	1160076.34	6
336	597331.60	1160112.23	6	406	597187.93	1160077.22	3
337	597318.59	1160112.02	3	407	597187.43	1160077.18	3
338	597318.94	1160111.59	3	408	597173.69	1160075.66	6
339	597318.45	1160111.48	3	409	597173.19	1160075.64	6

č.b.	Y	X	KK	č.b.	Y	X	KK
410	597173.67	1160076.21	3	480	597010.74	1160081.67	3
411	597173.18	1160076.17	3	481	597010.70	1160081.17	3
412	597173.40	1160076.69	3	482	597008.64	1160081.34	3
413	597163.33	1160076.08	3	483	597008.63	1160080.75	6
414	597163.61	1160075.60	3	484	597008.13	1160080.79	6
415	597163.12	1160075.55	3	485	597008.14	1160081.38	3
416	597163.67	1160074.67	6	486	596994.21	1160082.94	3
417	597163.17	1160074.64	6	487	596994.17	1160082.44	3
418	597160.53	1160075.20	3	488	596992.03	1160083.19	3
419	597160.47	1160074.46	6	489	596991.99	1160082.69	3
420	597159.97	1160074.42	6	490	596976.85	1160083.97	3
421	597160.03	1160075.14	3	491	596977.08	1160083.46	3
422	597157.60	1160074.86	3	492	596977.08	1160082.89	3
423	597157.56	1160075.36	3	493	596976.58	1160082.93	3
424	597152.37	1160075.00	3	494	596976.58	1160083.50	3
425	597152.39	1160074.50	3	495	596969.15	1160084.90	3
426	597148.71	1160074.51	3	496	596969.11	1160084.40	3
427	597148.67	1160073.92	3	497	596966.15	1160085.06	3
428	597148.17	1160073.96	3	498	596966.11	1160084.56	3
429	597148.20	1160074.51	3	499	596964.73	1160084.66	3
430	597148.22	1160075.01	3	500	596964.70	1160083.70	3
431	597146.57	1160075.27	3	501	596964.20	1160083.74	3
432	597146.53	1160074.77	3	502	596964.23	1160084.70	3
433	597126.88	1160075.18	3	503	596959.31	1160085.59	3
434	597126.88	1160074.68	3	504	596959.29	1160085.09	3
435	597118.29	1160075.33	3	505	596956.09	1160085.24	3
436	597118.27	1160074.83	3	506	596956.11	1160085.74	3
437	597115.29	1160075.46	3	507	596950.53	1160085.60	3
438	597115.27	1160074.96	3	508	596950.51	1160085.07	3
439	597105.97	1160075.65	3	509	596950.01	1160085.09	3
440	597105.95	1160075.15	3	510	596950.03	1160085.64	3
441	597103.44	1160075.27	3	511	596939.98	1160086.38	3
442	597102.94	1160075.29	3	512	596939.31	1160086.97	3
443	597102.95	1160074.47	6	513	596939.95	1160085.26	3
444	597103.45	1160074.44	6	514	596939.45	1160085.29	3
445	597094.12	1160075.74	3	515	596939.48	1160086.46	3
446	597094.09	1160075.16	3	516	596932.73	1160087.35	3
447	597093.59	1160075.20	3	517	596932.69	1160086.85	3
448	597093.63	1160075.76	3	518	596925.14	1160087.37	3
449	597093.90	1160076.25	3	519	596925.12	1160086.23	3
450	597088.07	1160076.59	3	520	596924.62	1160086.26	3
451	597088.27	1160076.08	3	521	596924.64	1160087.41	3
452	597087.77	1160076.11	3	522	596912.01	1160088.75	3
453	597088.18	1160075.30	6	523	596911.97	1160088.25	3
454	597087.68	1160075.33	6	524	596886.31	1160088.73	3
455	597084.94	1160076.85	3	525	596886.35	1160089.85	3
456	597084.90	1160076.35	3	526	596885.81	1160088.76	3
457	597067.93	1160077.10	3	527	596885.85	1160089.88	3
458	597068.03	1160076.57	6	528	596882.97	1160090.05	3
459	597067.52	1160076.61	6	529	596883.07	1160090.55	3
460	597067.42	1160077.13	3	530	596880.23	1160091.63	3
461	597067.65	1160077.62	3	531	596880.13	1160091.13	3
462	597062.69	1160077.48	3	532	596875.10	1160091.81	3
463	597062.60	1160076.95	6	533	596875.16	1160091.31	3
464	597062.10	1160076.98	6	534	596873.68	1160090.84	3
465	597062.19	1160077.52	3	535	596873.62	1160091.34	3
466	597045.08	1160079.28	3	536	596868.59	1160091.84	3
467	597045.29	1160078.76	3	537	596868.59	1160091.34	3
468	597045.25	1160078.16	6	538	596865.44	1160091.53	3
469	597044.75	1160078.19	6	539	596865.70	1160091.05	3
470	597044.79	1160078.80	3	540	596865.07	1160090.21	6
471	597033.51	1160079.96	3	541	596864.49	1160090.26	6
472	597033.72	1160079.45	3	542	596863.93	1160090.31	6
473	597033.68	1160078.96	6	543	596863.41	1160090.35	6
474	597033.22	1160079.48	3	544	596863.30	1160088.60	3
475	597033.18	1160078.99	6	545	596863.17	1160088.50	3
476	597018.65	1160080.60	3	546	596863.82	1160088.53	3
477	597018.66	1160080.23	3	547	596862.75	1160084.75	3
478	597018.16	1160080.21	3	548	596863.52	1160083.47	3
479	597018.15	1160080.64	3	549	596864.14	1160082.78	3

č.b.	Y	X	KK	č.b.	Y	X	KK
550	596865.07	1160082.17	3	620	596990.15	1160092.92	3
551	596864.84	1160081.73	3	621	596984.64	1160094.19	3
552	596863.02	1160082.33	3	622	596984.60	1160093.69	3
553	596862.87	1160083.26	3	623	596974.77	1160094.65	3
554	596862.47	1160084.33	3	624	596974.27	1160094.68	3
555	596861.91	1160085.16	3	625	596974.27	1160095.74	6
556	596861.79	1160084.66	3	626	596974.51	1160094.16	3
557	596853.43	1160085.55	3	627	596956.33	1160095.82	3
558	596853.39	1160085.06	3	628	596955.83	1160095.86	3
559	596853.02	1160084.82	3	629	596956.36	1160096.94	3
560	596853.04	1160085.97	3	630	596955.86	1160096.97	3
561	596852.54	1160085.79	3	631	596943.48	1160096.23	3
562	596852.93	1160085.36	3	632	596943.76	1160096.71	3
563	596852.54	1160085.10	3	633	596943.81	1160097.83	3
564	596852.37	1160081.51	3	634	596943.31	1160097.86	3
565	596851.74	1160081.44	3	635	596943.26	1160096.74	3
566	596851.80	1160080.94	3	636	596940.02	1160096.92	3
567	596852.85	1160081.06	3	637	596940.17	1160098.08	3
568	596853.25	1160091.24	6	638	596939.52	1160096.94	3
569	596852.75	1160091.28	6	639	596923.16	1160098.01	3
570	596852.78	1160091.81	3	640	596922.66	1160098.05	3
571	596853.28	1160092.03	3	641	596923.23	1160099.20	3
572	596852.57	1160092.67	3	642	596922.73	1160099.23	3
573	596852.37	1160092.19	3	643	596922.84	1160097.53	3
574	596839.86	1160093.62	3	644	596910.54	1160098.49	3
575	596839.82	1160093.12	3	645	596910.58	1160098.99	3
576	596828.33	1160094.37	3	646	596896.67	1160099.91	3
577	596828.31	1160093.87	3	647	596896.76	1160101.02	3
578	596821.96	1160094.67	3	648	596896.26	1160101.05	3
579	596821.94	1160094.17	3	649	596896.17	1160099.95	3
580	596804.94	1160095.38	3	650	596896.38	1160099.43	3
581	596804.90	1160094.40	3	651	596882.15	1160101.17	3
582	596804.40	1160094.42	3	652	596882.11	1160100.67	3
583	596804.44	1160095.42	3	653	596867.10	1160102.14	3
584	596804.32	1160095.93	3	654	596866.88	1160101.66	3
585	596790.52	1160096.83	3	655	596866.26	1160102.96	6
586	596790.48	1160096.33	3	656	596865.47	1160103.02	6
587	596785.41	1160097.26	3	657	596864.70	1160103.08	6
588	596785.57	1160096.74	3	658	596864.20	1160103.11	6
589	596785.28	1160096.52	3	659	596864.78	1160104.38	3
590	596785.19	1160095.76	3	660	596865.06	1160108.84	3
591	596784.69	1160095.82	3	661	596864.56	1160108.88	3
592	596784.77	1160096.53	3	662	596865.21	1160110.22	3
593	596785.04	1160096.96	3	663	596864.71	1160110.26	3
594	596784.43	1160096.79	3	664	596866.69	1160113.31	3
595	596784.61	1160097.27	3	665	596865.30	1160113.36	3
596	596771.03	1160098.39	3	666	596864.81	1160113.63	3
597	596770.99	1160097.89	3	667	596866.73	1160113.81	3
598	597037.73	1160089.91	3	668	596865.33	1160113.86	3
599	597037.75	1160090.41	3	669	596865.93	1160122.96	3
600	597030.23	1160090.81	3	670	596865.43	1160123.00	3
601	597030.19	1160090.31	3	671	596867.74	1160127.44	3
602	597019.36	1160091.13	3	672	596866.28	1160127.57	3
603	597019.62	1160091.61	3	673	596867.78	1160127.94	3
604	597019.12	1160091.64	3	674	596866.32	1160128.07	3
605	597019.64	1160092.48	6	675	596865.80	1160127.86	3
606	597019.14	1160092.51	6	676	596866.50	1160129.88	3
607	597016.16	1160091.71	3	677	596865.94	1160129.28	3
608	597015.86	1160091.22	3	678	596865.60	1160129.69	3
609	597015.66	1160091.74	3	679	596866.01	1160130.02	3
610	597016.32	1160092.72	6	680	596867.20	1160140.66	3
611	597015.82	1160092.76	6	681	596866.70	1160140.70	3
612	597002.45	1160092.72	3	682	596867.81	1160146.99	3
613	597002.17	1160092.24	3	683	596867.31	1160147.03	3
614	597001.95	1160092.76	3	684	596868.03	1160150.85	3
615	597002.50	1160093.73	6	685	596867.53	1160150.91	3
616	597002.00	1160093.76	6	686	596868.45	1160152.45	3
617	596995.13	1160093.21	3	687	596868.62	1160154.39	3
618	596995.11	1160092.71	3	688	596869.59	1160155.65	3
619	596990.19	1160093.42	3	689	596869.81	1160155.83	6

č. b.	Y	X	KK	č. b.	Y	X	KK
690	596871.12	1160156.83	3	760	596853.26	1160130.40	3
691	596871.84	1160157.05	3	761	596853.23	1160129.90	3
692	596868.32	1160154.81	3	762	596854.65	1160120.28	3
693	596869.23	1160156.01	3	763	596854.15	1160120.32	3
694	596869.86	1160156.49	6	764	596853.71	1160115.41	3
695	596869.90	1160157.07	6	765	596854.19	1160115.12	3
696	596868.50	1160157.02	3	766	596853.67	1160114.91	3
697	596874.20	1160157.72	3	767	596852.20	1160115.53	3
698	596875.08	1160157.80	3	768	596852.17	1160115.03	3
699	596875.06	1160157.13	3	769	596852.87	1160105.47	3
700	596876.38	1160157.26	3	770	596853.35	1160105.23	3
701	596876.38	1160156.51	6	771	596851.11	1160103.98	6
702	596876.88	1160156.53	6	772	596851.84	1160103.93	6
703	596876.88	1160157.29	3	773	596851.27	1160103.44	3
704	596878.71	1160157.34	3	774	596830.95	1160105.18	3
705	596878.69	1160157.84	3	775	596830.91	1160104.68	3
706	596869.94	1160157.57	6	776	596817.54	1160106.13	3
707	596868.55	1160157.53	3	777	596817.54	1160106.33	3
708	596868.04	1160157.51	3	778	596817.04	1160106.37	3
709	596867.98	1160157.01	3	779	596817.04	1160106.17	3
710	596858.68	1160157.19	3	780	596817.26	1160105.65	3
711	596858.68	1160156.69	3	781	596811.82	1160105.98	3
712	596869.87	1160176.30	3	782	596812.11	1160106.46	3
713	596869.37	1160176.36	3	783	596812.13	1160106.71	3
714	596869.57	1160177.48	3	784	596811.63	1160106.74	3
715	596870.02	1160177.17	3	785	596811.61	1160106.50	3
716	596870.09	1160177.67	3	786	596795.05	1160107.07	3
717	596871.42	1160177.49	6	787	596795.33	1160107.55	3
718	596871.38	1160176.99	6	788	596795.35	1160107.91	3
719	596871.00	1160189.98	3	789	596794.85	1160107.94	3
720	596870.50	1160190.02	3	790	596794.83	1160107.58	3
721	596871.32	1160201.58	3	791	596775.05	1160108.79	3
722	596871.84	1160201.79	3	792	596775.01	1160108.29	3
723	596871.80	1160201.29	3	793	596856.19	1160182.37	6
724	596873.32	1160201.15	6	794	596856.05	1160181.02	3
725	596873.35	1160201.65	6	795	596847.42	1160163.05	6
726	596872.20	1160206.73	3	796	596847.38	1160162.45	6
727	596871.68	1160206.51	3	797	596848.88	1160161.93	3
728	596872.89	1160222.74	3	798	596848.68	1160161.45	3
729	596873.37	1160222.46	3	799	596845.08	1160131.12	3
730	596873.81	1160222.74	3	800	596845.04	1160130.62	3
731	596873.67	1160223.24	3	801	596844.84	1160116.10	3
732	596875.02	1160223.22	6	802	596844.81	1160115.60	3
733	596874.98	1160222.72	6	803	596853.38	1160161.48	3
734	596871.52	1160206.51	3	804	596853.32	1160160.98	3
735	596871.54	1160207.01	3	2142-31	597513.75	1160240.41	3
736	596871.72	1160207.01	3	2144-56	597493.37	1160372.90	3
737	596856.55	1160181.16	6	2144-57	597494.14	1160367.44	3
738	596856.50	1160180.39	6	2144-61	597497.81	1160343.54	3
739	596856.63	1160180.21	3				
740	596856.91	1160180.69	3				
741	596858.39	1160180.53	3				
742	596858.13	1160180.05	3				
743	596859.14	1160179.63	3				
744	596858.62	1160179.47	3				
745	596858.62	1160172.65	3				
746	596858.12	1160172.69	3				
747	596857.68	1160160.75	3				
748	596857.16	1160160.55	3				
749	596857.20	1160161.05	3				
750	596855.18	1160161.28	6				
751	596855.15	1160160.78	6				
752	596857.38	1160157.25	3				
753	596857.34	1160156.75	3				
754	596856.86	1160157.03	3				
755	596856.25	1160142.30	3				
756	596855.75	1160142.34	3				
757	596855.34	1160129.97	3				
758	596854.82	1160129.76	3				
759	596854.86	1160130.26	3				



514

449/3

449/4

449/1

455

449/5

515

449/2

449





508

465

512

514

452

451

450

449/3

449/4

449/1

449/5

438/10

438/13

W

449/1



50V4

4

E/304

457/1

456/1

455/1

455/2

455

503

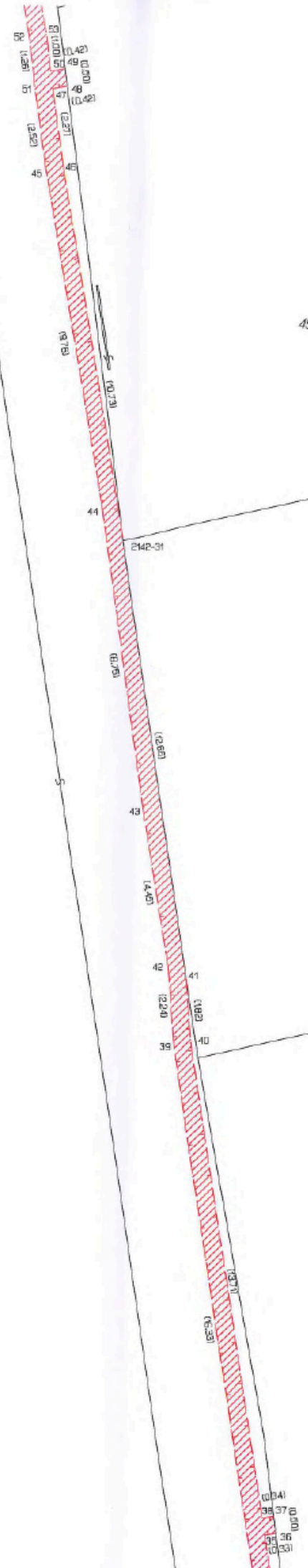
454

505

453

509

452



0.04
36.37
0.00
0.00
0.00

488

491

496/1

501/1

501/4

465

450

458

459

456/1

457/1





Orna Pole (6/0771)
Zábrdovice (6/0704)





407

400

398

19

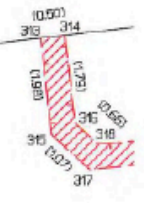
406/1

398

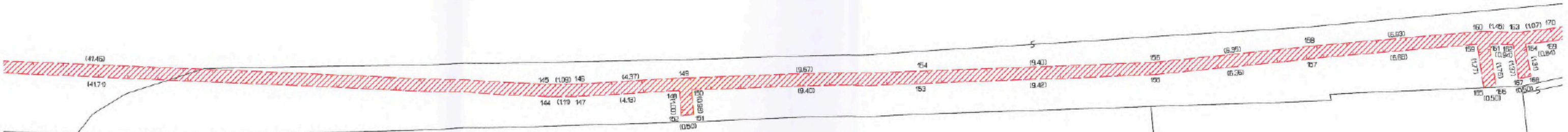
400

408/1

216/2



216/1



454/1

217

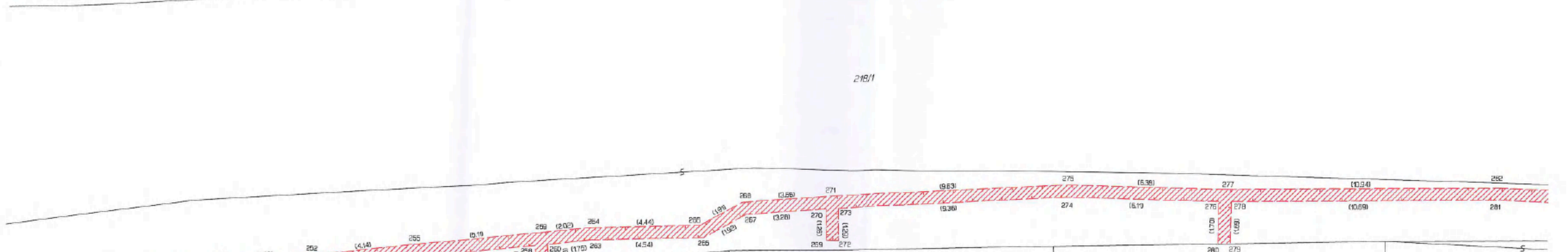
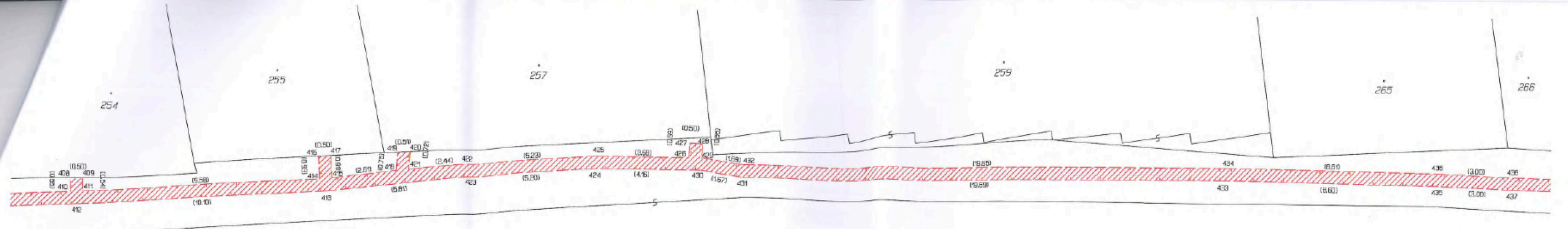
216

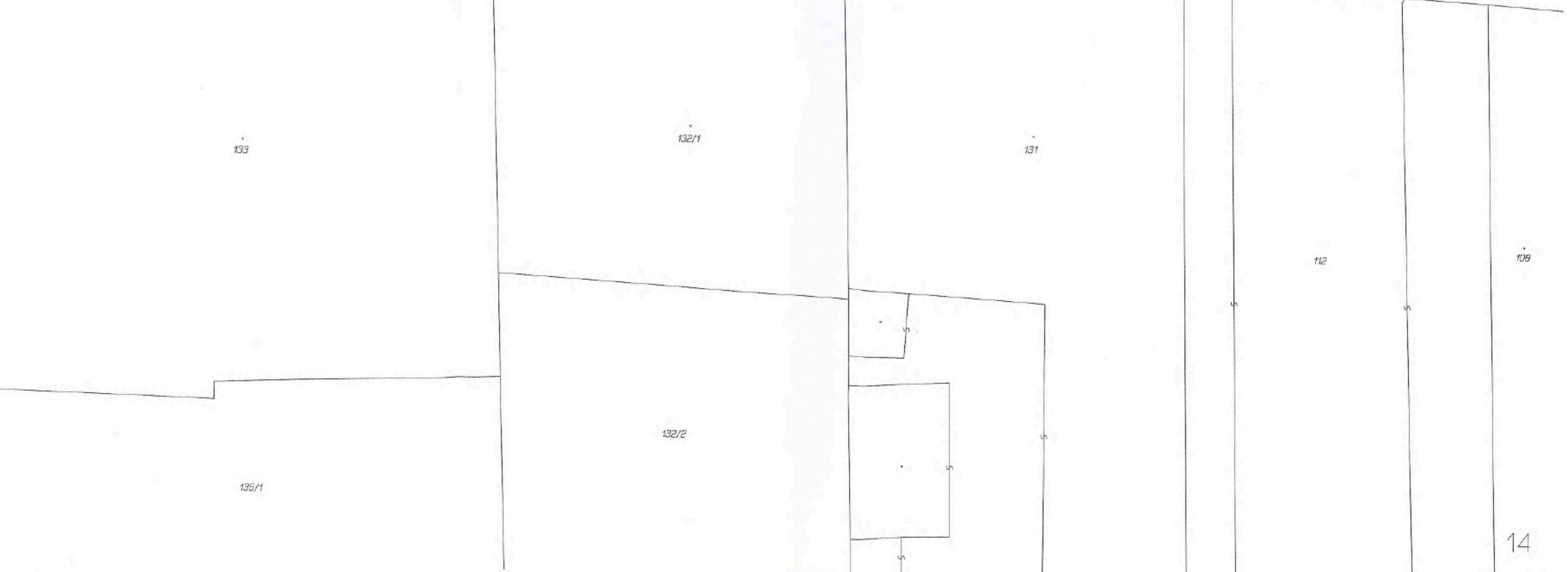
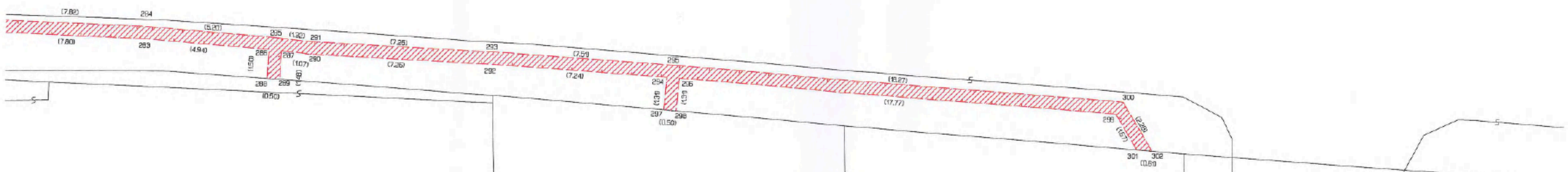
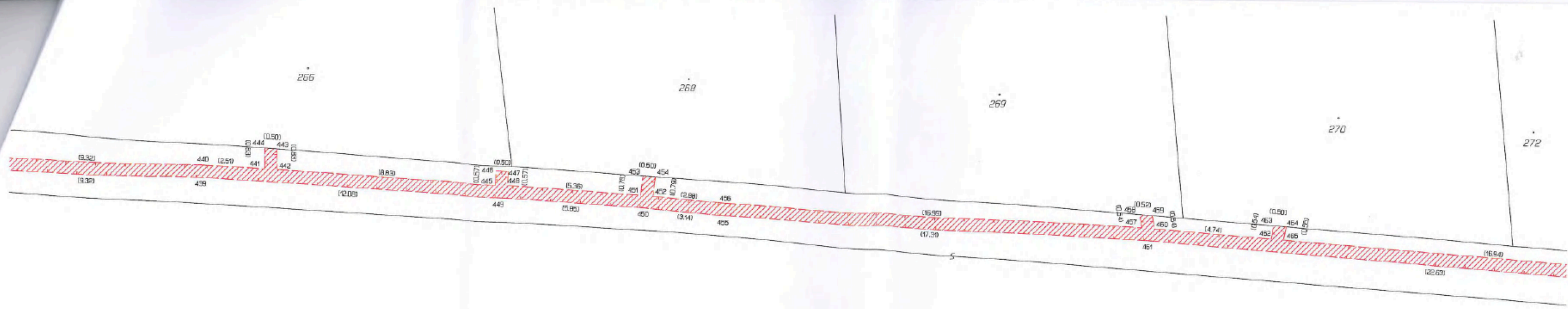
L 194/3

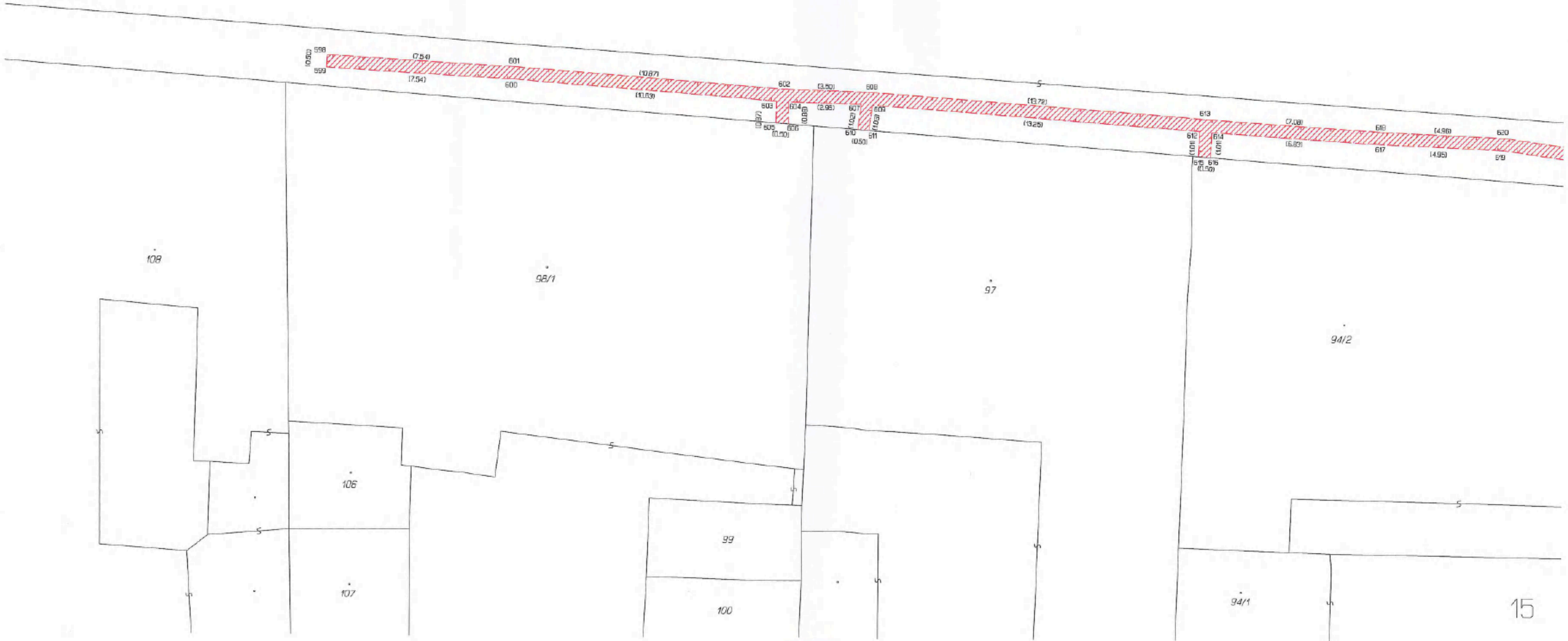
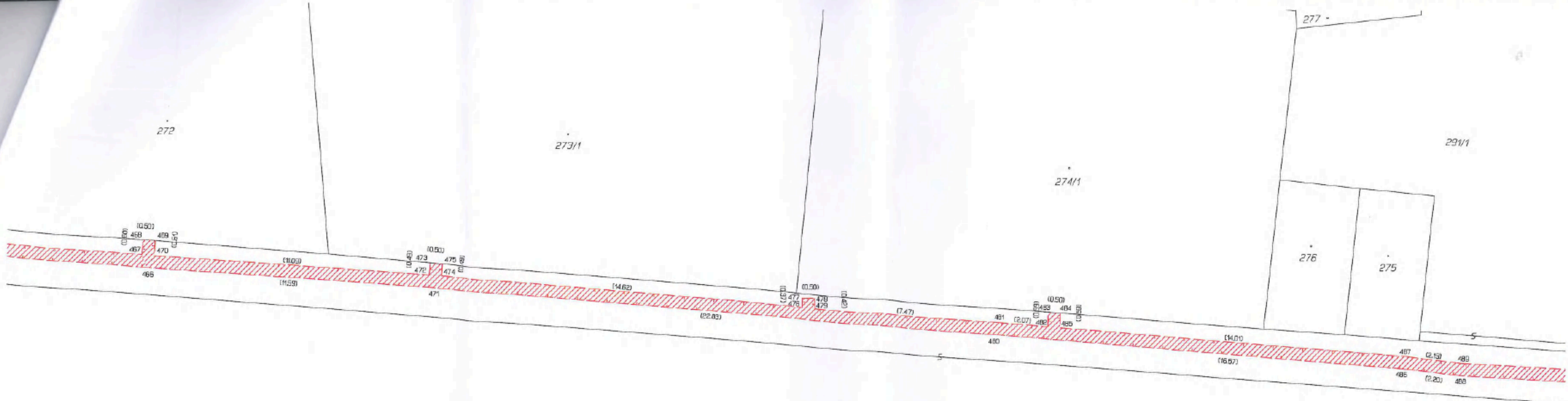


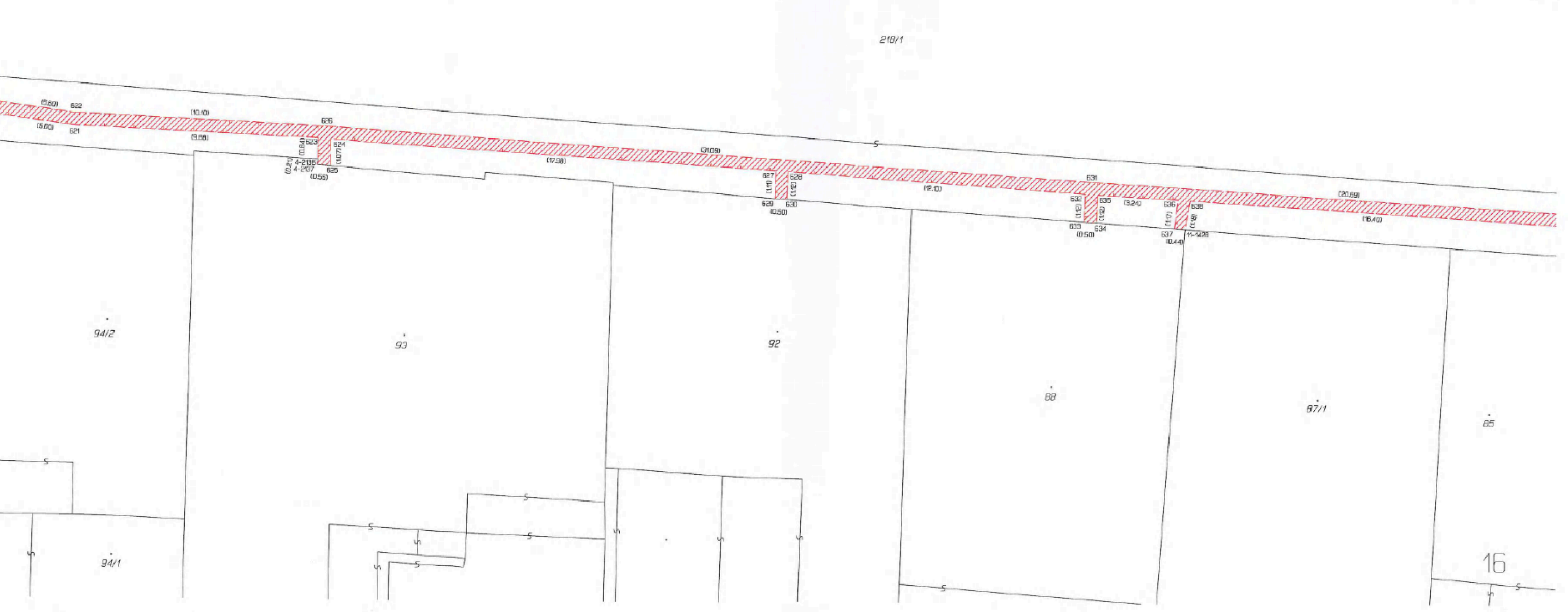
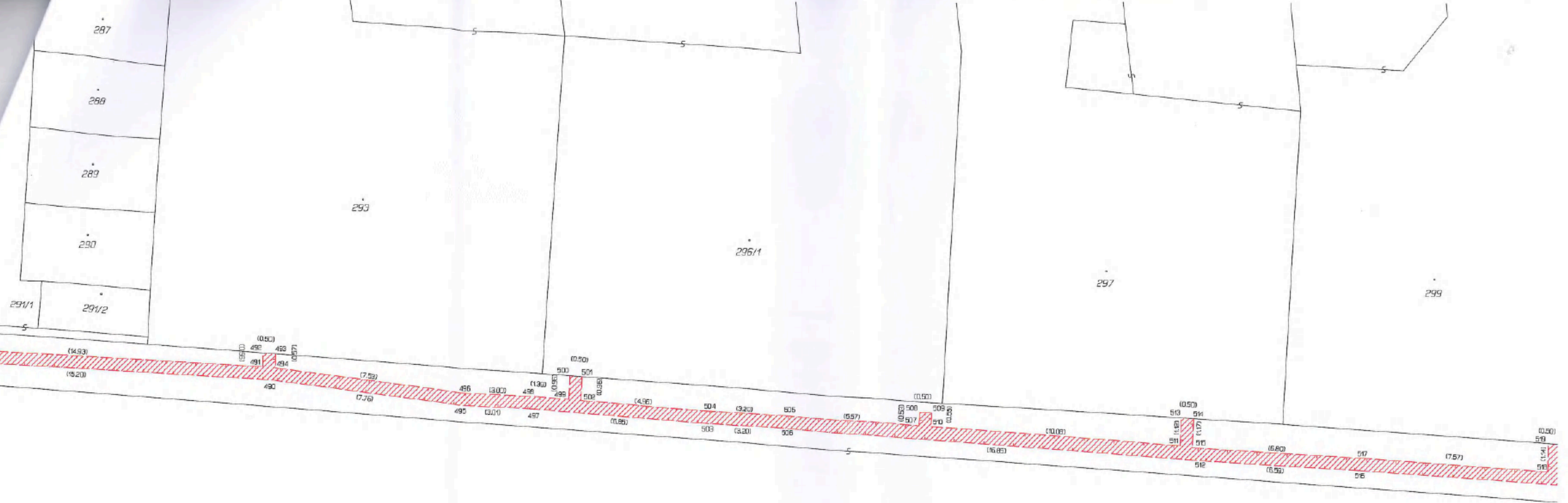


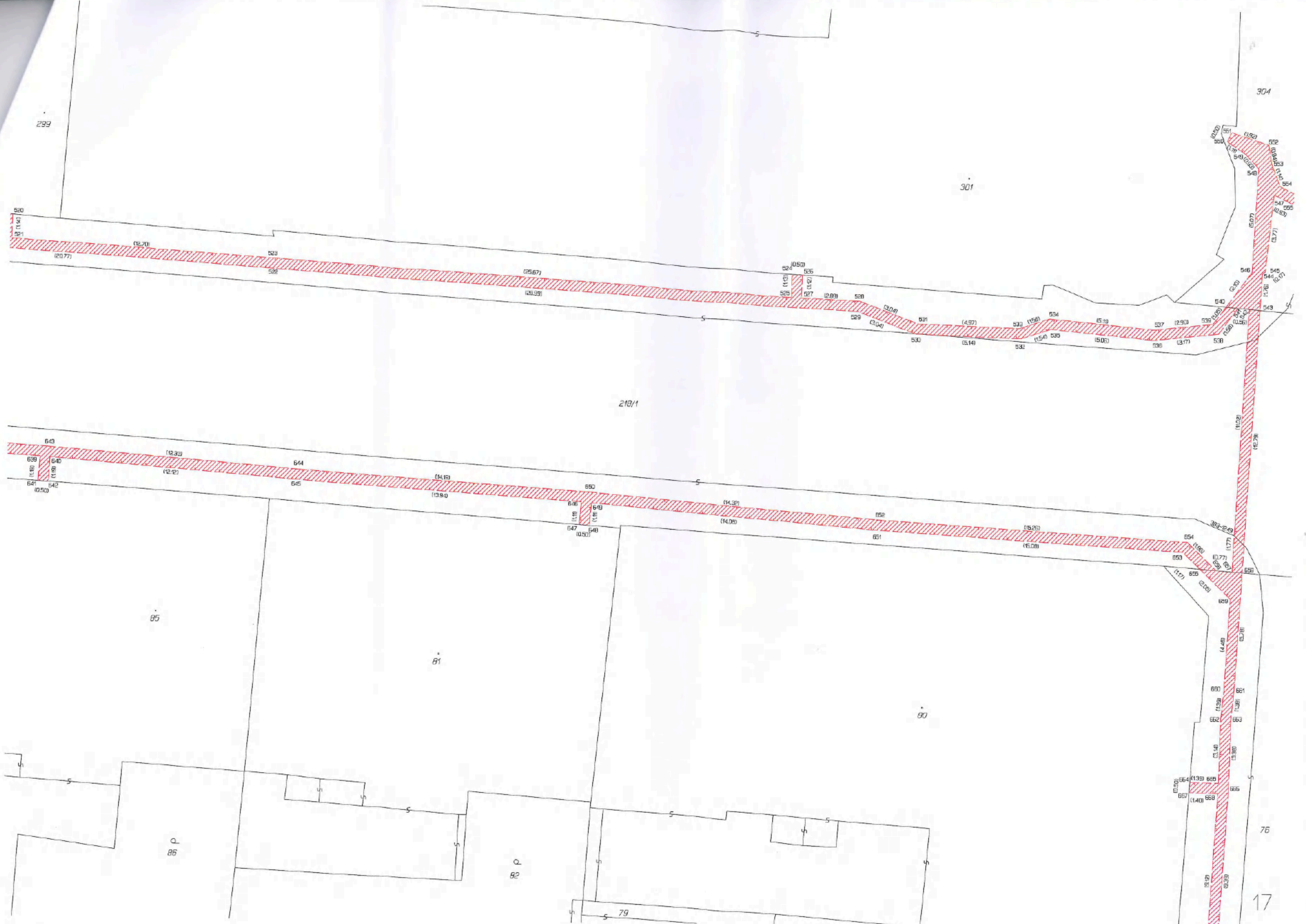


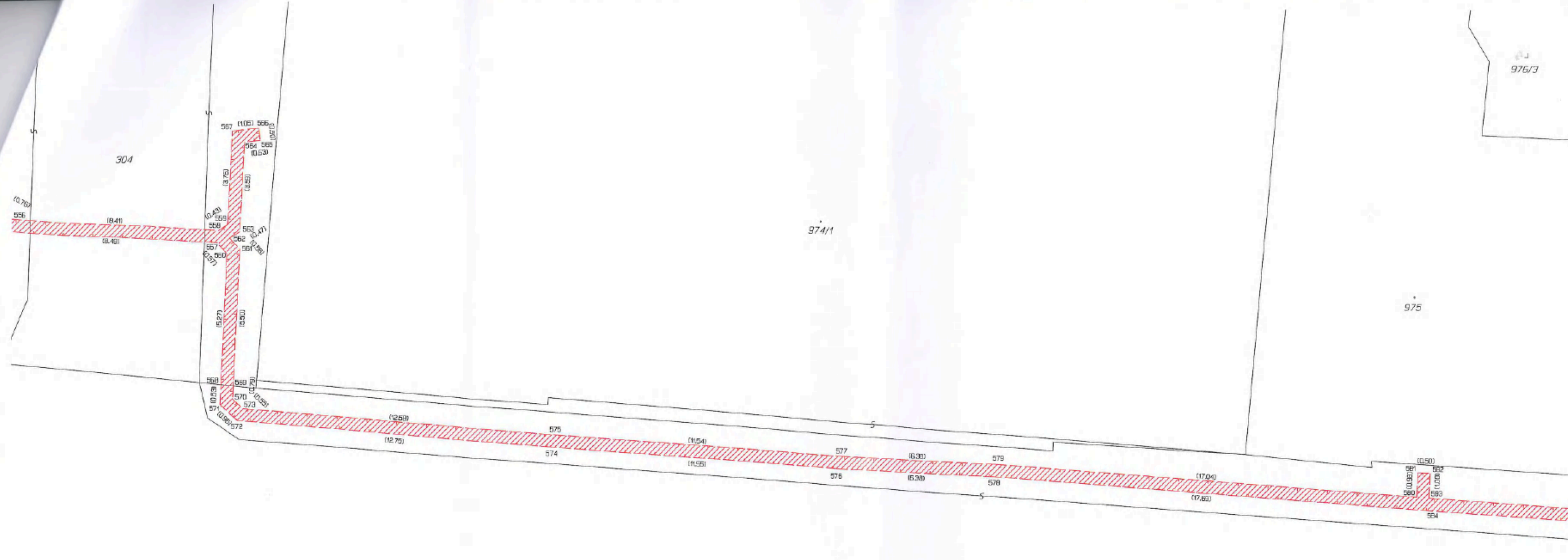












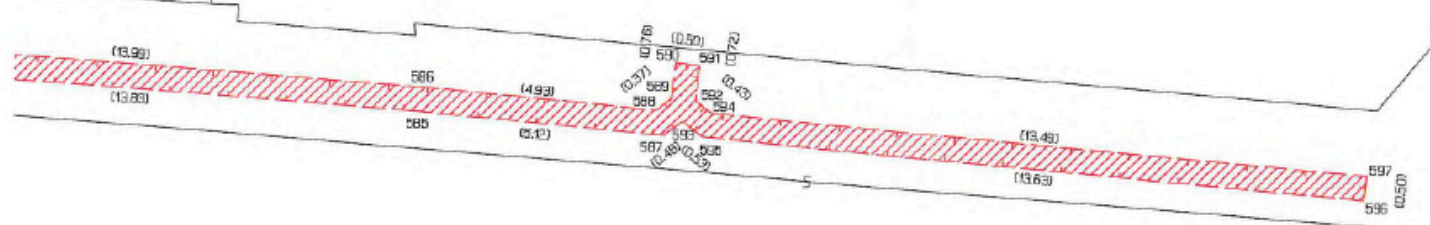
976/3

1099/1

1035/2

975/1

975



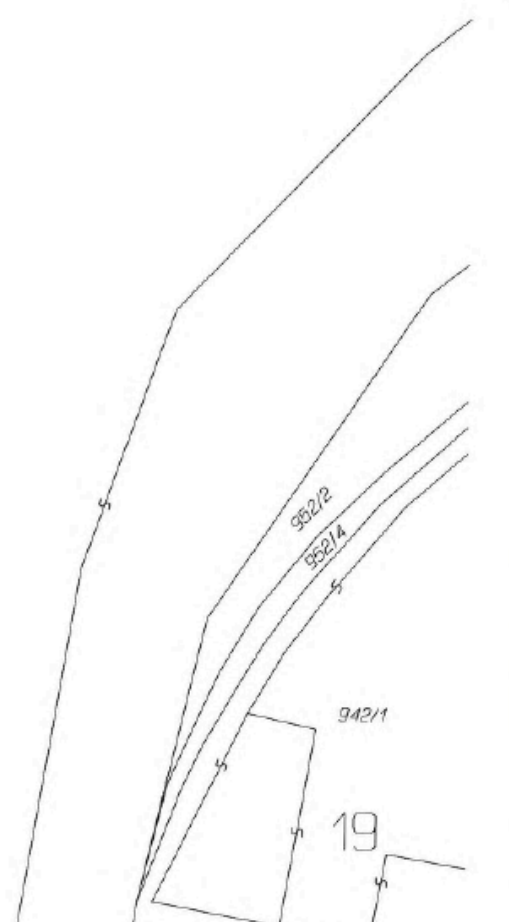
218/1

952/1



954

953/1





79

78

77

75

76

969/2

969/3

969/1

968

967

966

964

965

20

970/1

P 972/1



32/1

31

732
733
731
730
734
735
736
737
738
739
740
741
742
743
744
745
746
747
748
749
750
751
752
753
754
755
756
757
758
759
760
761
762
763
764
765
766
767
768
769
770
771
772
773
774
775
776
777
778
779
780
781
782
783
784
785
786
787
788
789
790
791
792
793
794
795
796
797
798
799
800
801
802
803
804
805
806
807
808
809
810
811
812
813
814
815
816
817
818
819
820
821
822
823
824
825
826
827
828
829
830
831
832
833
834
835
836
837
838
839
840
841
842
843
844
845
846
847
848
849
850
851
852
853
854
855
856
857
858
859
860
861
862
863
864
865
866
867
868
869
870
871
872
873
874
875
876
877
878
879
880
881
882
883
884
885
886
887
888
889
890
891
892
893
894
895
896
897
898
899
900
901
902
903
904
905
906
907
908
909
910
911
912
913
914
915
916
917
918
919
920
921
922
923
924
925
926
927
928
929
930
931
932
933
934
935
936
937
938
939
940
941
942
943
944
945
946
947
948
949
950
951
952
953
954
955
956
957
958
959
960
961
962
963
964
965
966
967
968
969
970
971
972
973
974
975
976
977
978
979
980
981
982
983
984
985
986
987
988
989
990
991
992
993
994
995
996
997
998
999
1000

(80.77)

(85.78)

959

76

29

961/1

960

22