

Delay Notice

Dear Clients,

There is serious congestion at borders (Alashankou/Dostyk, Khorgos/Altynkol, Manzhouli/ZaBaikalsk, Erlanhot/Zamyn-uum). Bad weather, COVID-19 epidemic, construction works and explosive volumes slow down the operation and wagon/vessels circulation.

Herewith a overview of latest notice:

-Construction works in Poland, bad weather in Europe, congestion in mala, Brest, Belarus: Construction works in Poland between 8.4-8.20 have finished. There is serious congestion along this route due to closure. This causes long transit and waiting time for eastbound and westbound trains. The congestion even causes serious wagon shortage/long waiting at borders (Altynkol, Dostyk, etc) and even in Chinese part. It will still last for a few weeks. The whole construction works plan in Poland will last till November.

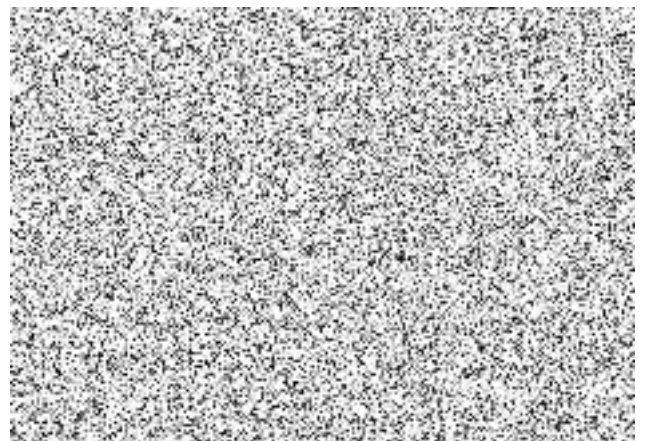
-Construction works in Hamburg Steinweg port: 30.08.2021 - 06.09.2021 it cannot be planned any trains from/to C. Steinweg Hamburg. The reason behind that is a renovation of a rail crossing, that prevent any trains of entering / leaving the Terminal. Trains via Kaliningrad-Hamburg will be affected. Some trains have been detoured or changed route.

-Serious congestion in Zamyn-uum. Trains need wait for reloading in queue.

-Congestion in terminals which affected the unloading/loading of following EB/WB trains: which are caused by slow pickup and large volumes of China-Euro block trains.

We are doing at most, pushing agent to try everything ensure YXO trains' priority in each point. We will keep closed eyes at the changing situation, try everything we could to shorten the delay time, will keep you updated.

Thanks for your support and understanding.



延误通知

尊敬的客户:

由于铁路维修,恶劣天气及口岸边境疫情防控等原因,车板循环异常,铁路换装作业能力下降,班列延误严重。

最新情况如下:

1. 波兰铁路维修,马拉舍维奇,布列斯特场站爆满,白俄拥堵: 8.4-8.20,波兰马拉舍维奇边境铁路维修已经结束,目前这条线路还有部分班列积压在白俄罗斯,严重拥堵,部分班列在布列斯特,白俄罗斯保留,甚至延申到哈萨克边境,中国口岸和境内。预计拥堵还需要几周的时间才能缓解。波兰其他地方的铁路维修将持续到11月。
2. 汉堡港维修: 30.08.2021 - 06.09.2021期间汉堡港将关闭,通往汉堡港的去回程班列会受影响。目前部分班列已计划绕港或更改线路。
3. 扎猛乌德口岸出现拥堵,大量班列排队等待换装。
4. 集装箱堆存时间长,中欧班列货量大,欧洲各大场站集装箱堆存达到上限,挤压正常的班列操作装卸。无法承受给后面的班列提供装卸计划。导致去回程班列循环延误。

我们会持续关注班列运行动态。要求沿线各代理尽最大能力优先保障渝新欧班列换装放行,尽全力将您的货物尽快运抵目的地。

感谢您的理解和支持!

