

Q
499/5

Q
499/6

Q
499/7

Q
499/8

4106

1967

5983

(73.47)
(73.49)

1910

2860/4

1781

Q
500/3

Q
2376/15

1780

4207

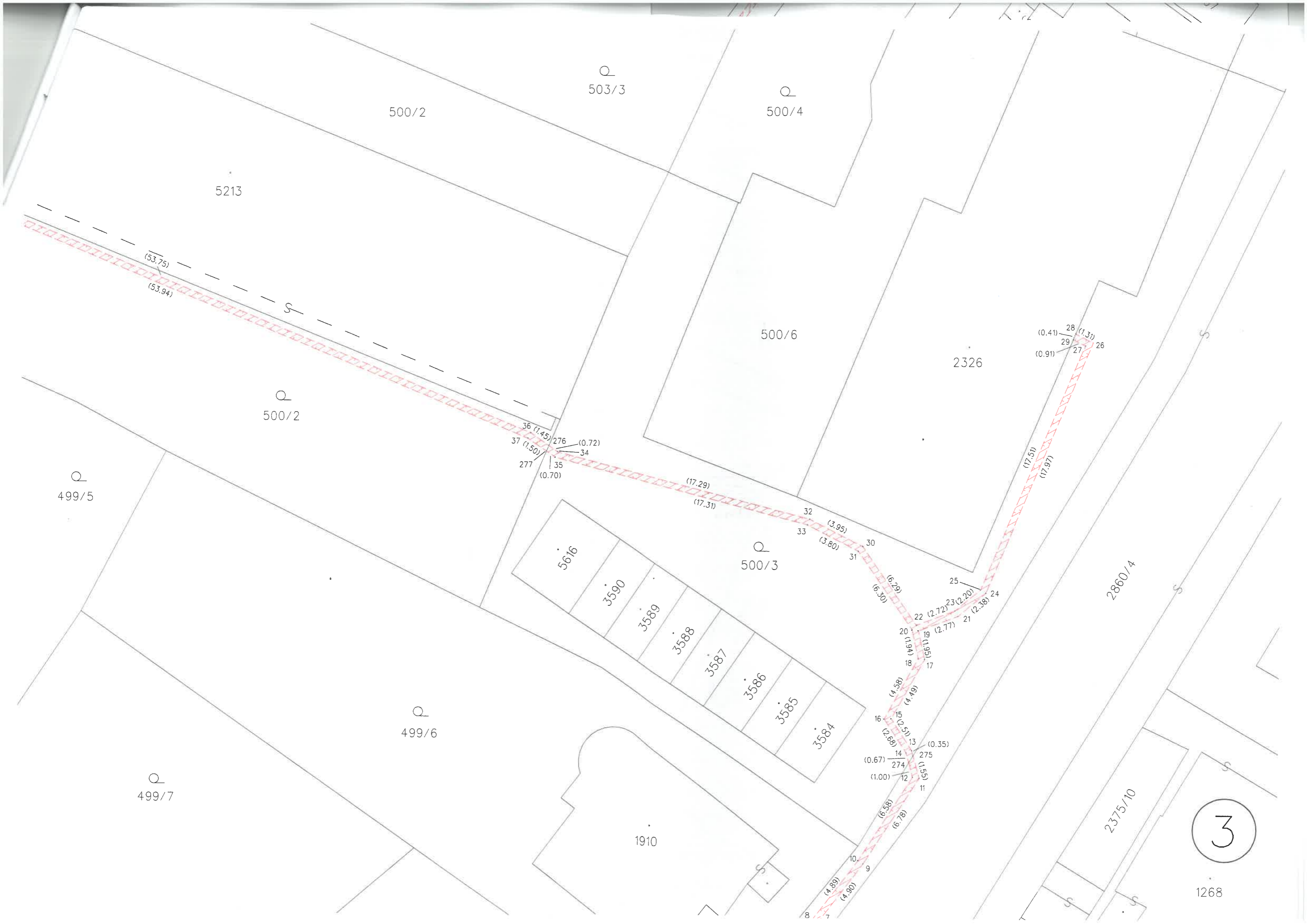
Q
2375/6

2375/10

18
(4.58)
17
(4.49)
16
(2.68)
15
(2.51)
14
(0.67)
13
(0.35)
12
(1.53)
11
(1.53)
274
(1.00)
275
(0.35)
(6.58)
(6.78)

3587
3586
3585
3584

2



5213

500/2

503/3

500/4

500/6

2326

500/2

499/5

500/3

5616

3590

3589

3588

3587

3586

3585

3584

499/6

499/7

1910

2860/4

2375/10

3

1268

(53.75)

(53.94)

36 (1.45)

37 (1.50)

277 (0.70)

276 (0.72)

34

(17.29)

(17.31)

32 (3.95)

33 (3.80)

30 (6.29)

31 (6.30)

25 (2.72)

23 (2.20)

22 (2.77)

21 (2.38)

20 (4.61)

19 (5.61)

18 (4.38)

17 (4.49)

16 (2.51)

15 (2.51)

14 (0.67)

13 (0.35)

12 (1.00)

11 (1.95)

28 (0.41)

29 (0.91)

27 (1.31)

26 (1.31)

28 (17.51)

27 (17.97)

275 (0.67)

274 (1.00)

273 (6.58)

272 (6.78)

271 (4.80)

270 (4.90)

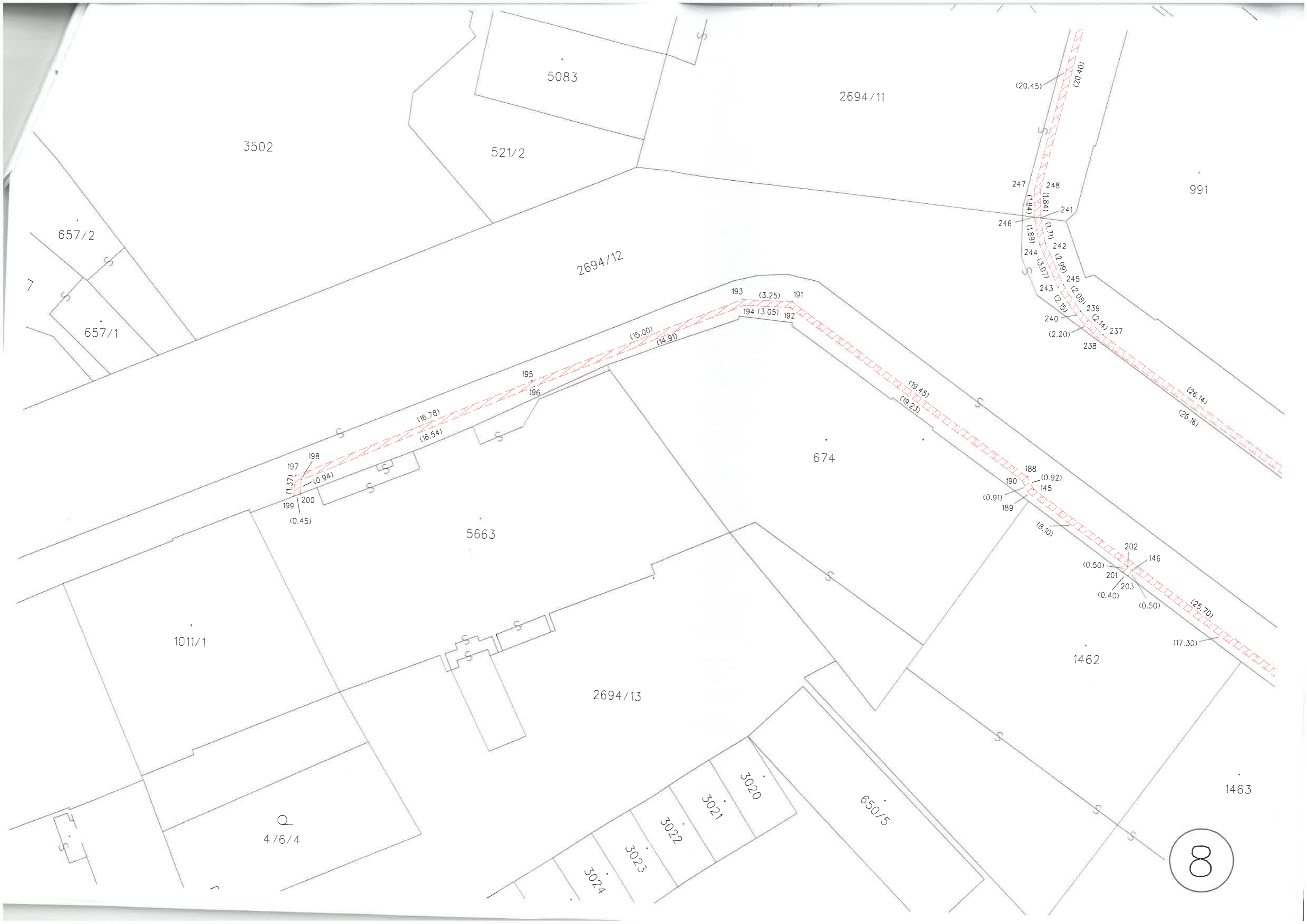


Detail C

Detail C



6



5083

2694/11

3502

521/2

657/2

657/1

2694/12

991

193 (3.25) 191

194 (3.05) 192

(15.00) (14.91)

195

196

(16.78)

(16.54)

198

197

(1.37)

200

199

(0.45)

(0.94)

5663

674

(19.45)

(19.23)

188 (0.92)

145

(0.91)

(8.10)

(0.50)

201

(0.40)

146

202

(0.50)

203

(0.50)

1462

(25.70)

(17.30)

1011/1

2694/13

476/4

3020

3021

3022

3023

3024

650/5

1463

8

664/2

2694/20

2694/10

2694/11

661

5083

(96.47)

(96.48)

250

249

(20.45)

(20.40)

991

518/1

9

664/3

664/2

2694/20

2694/11

(96.47)

(96.48)

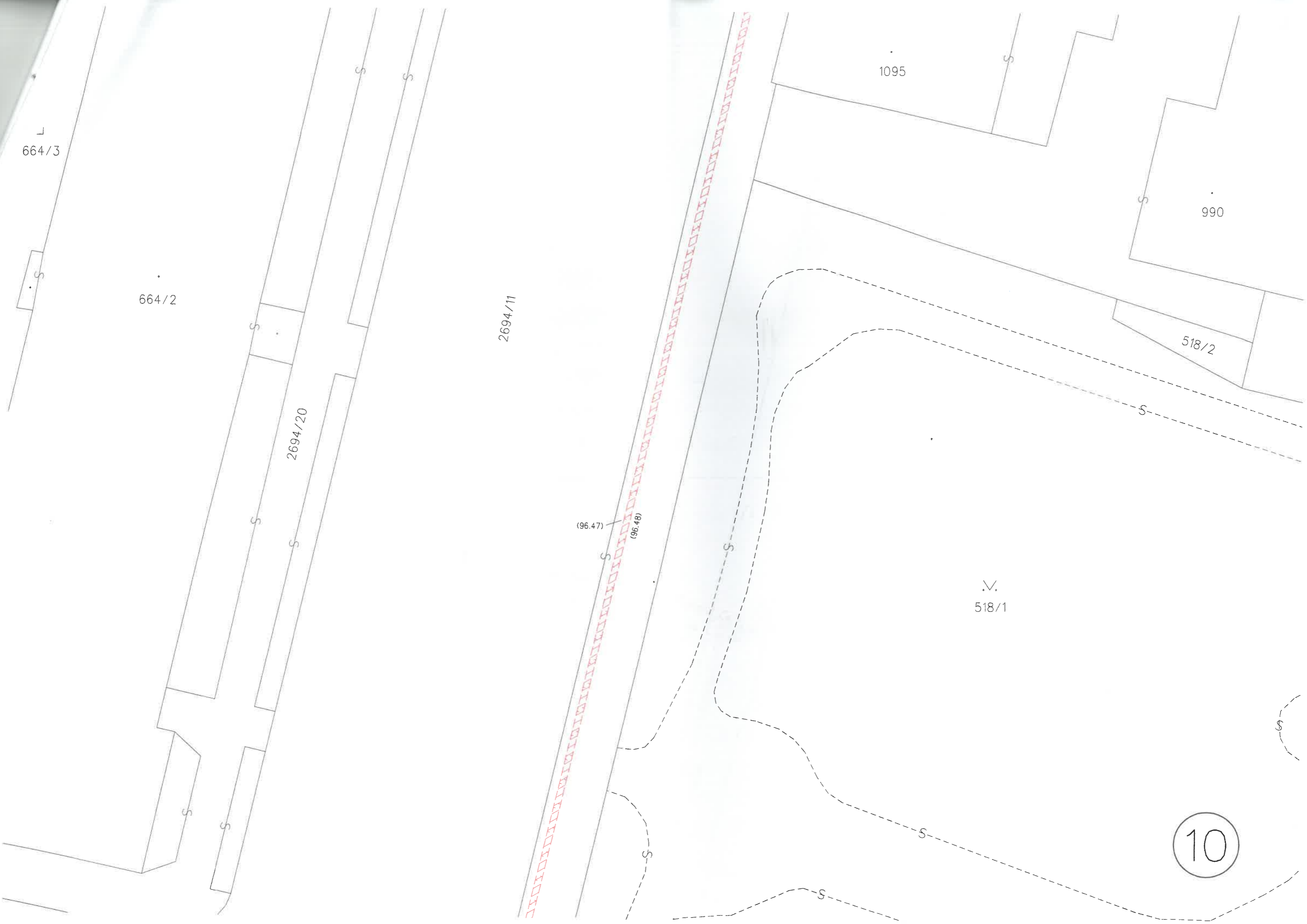
1095

990

518/2

518/1

10



527

2694/8

2694/11

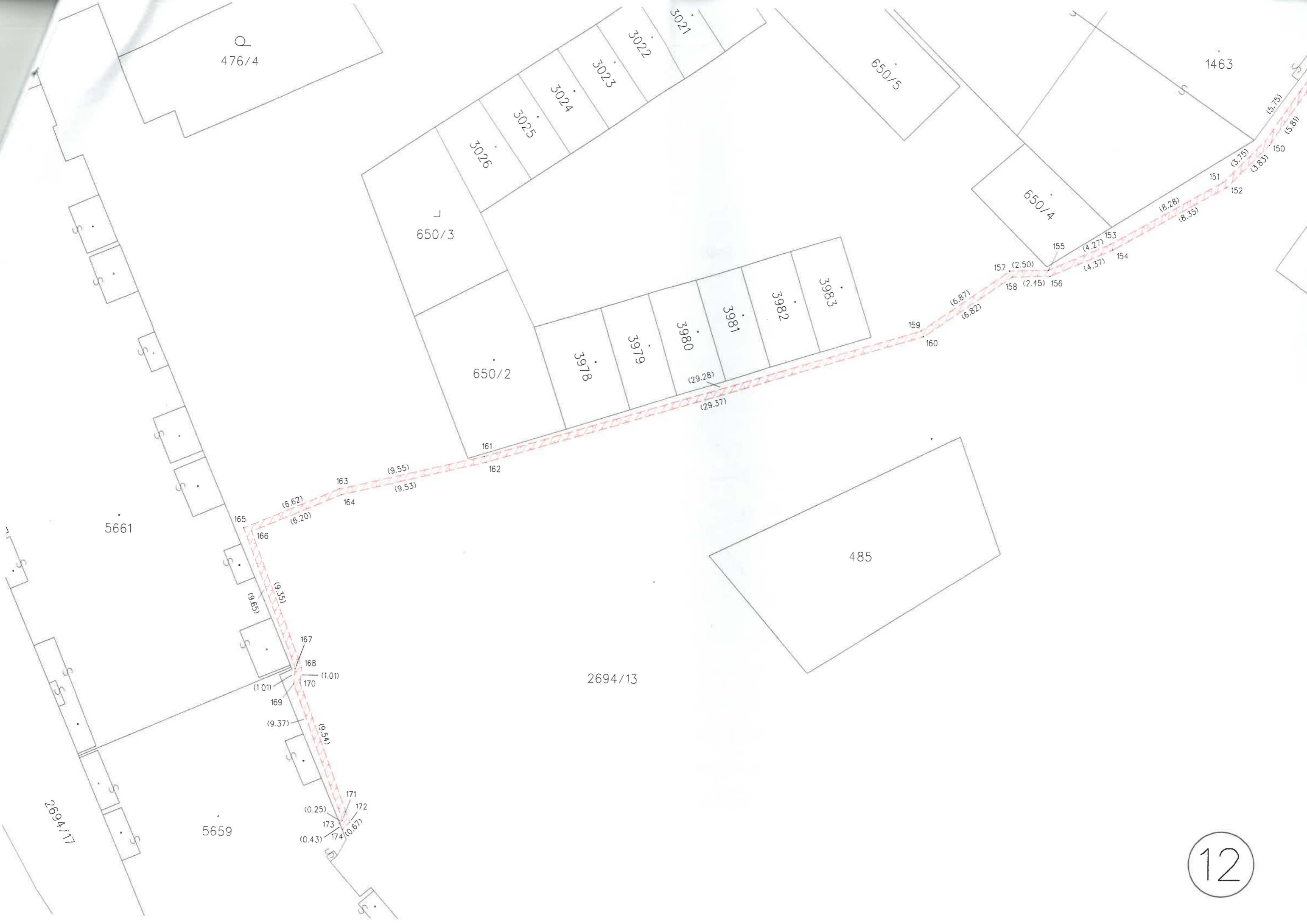
990

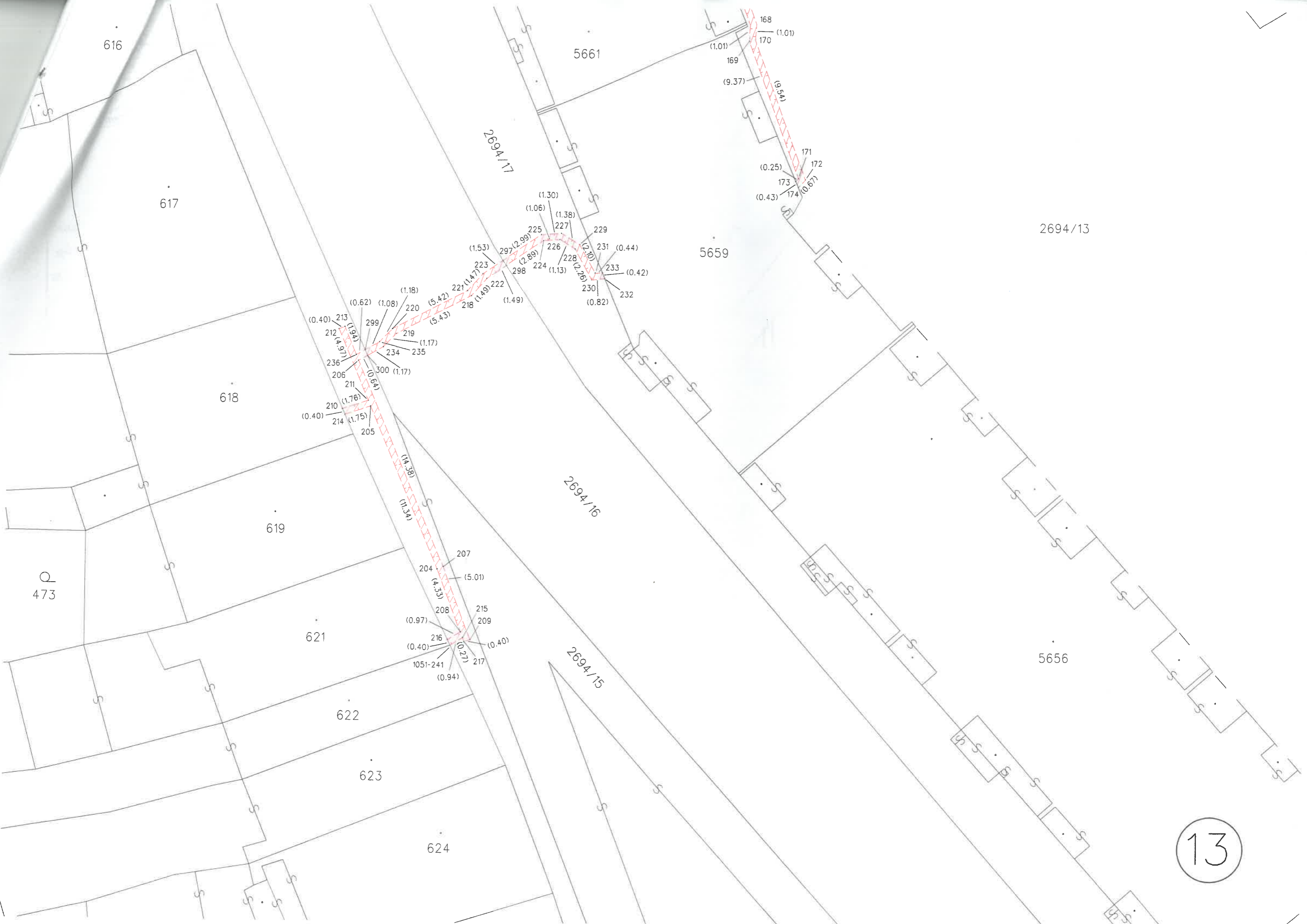
1095

664/2

2694/20







616

617

618

619

621

622

623

624

5661

5659

2694/13

5656

2694/17

2694/16

2694/15