

1 ke smlouvě o nájmu nemovitostí a jejich částí číslo 2957004809

Smluvní strany:

České dráhy, a.s.

se sídlem Praha 1, Nábřeží L. Svobody 1222, PSČ 110 15

zapsána v Obchodním rejstříku u Městského soudu v Praze, oddíl B, vložka 8039

IC: 70994226 DIČ: CZ70994226

zastoupena

Bankovní spojení:

Organizační složka: České dráhy, a.s., Regionální správa majetku Praha

Ukrajinská 304, 101 00 Praha 10

(dále jen pronajímatel)

a

ČD Cargo, a.s.

se sídlem Praha 7 Holešovice, Jankovcova 1569/2c, PSČ 170 00

zapsána v Obchodním rejstříku u Městského soudu v Praze, oddíl B, vložka 12844

IC: 28196678 DIČ: CZ28196678

zastoupena

Bankovní spojení: Československá obchodní banka, a.s. číslo účtu:

Organizační složka: ČD Cargo, a.s., Provozní jednotka Praha, Českomoravská 316/24, 190 00 Praha 9

(dále jen nájemce)

uzavírají tento dodatek ke smlouvě o nájmu nemovitostí a jejich částí

1. Předmět dodatku

Strany se dohodly na změně výše uvedené smlouvy a to způsobem níže uvedeným v tomto Dodatku č. 1. smlouvy. Ustanovení tímto dodatkem nedotčená zůstávají v platnosti a účinnosti v nezměněné podobě.

Předmětem úpravy smlouvy tímto dodatkem je úprava Přílohy č.1 Seznam pronajatých nemovitostí a jejich částí a úprava Přílohy č. 2 Splátkový kalendář. Účinnost dodatku nastává ke dni 1.4.2009 a to pro období 01.04. 2009 až 31.12.2009.

2. Ustanovení původní smlouvy, která jsou měněna

Příloha č. 1: Seznam pronajatých nemovitostí a jejich částí

Příloha č. 2: Splátkový kalendář

3. Závěrečná ustanovení

1. Smluvní strany prohlašují, že se seznámily s obsahem tohoto dodatku a prohlašují, že byl uzavřen na základě vzájemné svobodné vůle obou smluvních stran, nikoliv v tísní, ani za nápadně nevýhodných podmínek.

2. Tento dodatek je vyhotoven ve 4 vyhotoveních, z nichž dvě vyhotovení obdrží pronajímatel a dvě nájemce. Všechna podepsaná vyhotovení mají platnost originálu.

Smluvní strany prohlašují, že práva a povinnosti, vyplývající z tohoto dodatku se vztahují na jejich právní vztahy, existující mezi nimi od 1.4.2009.

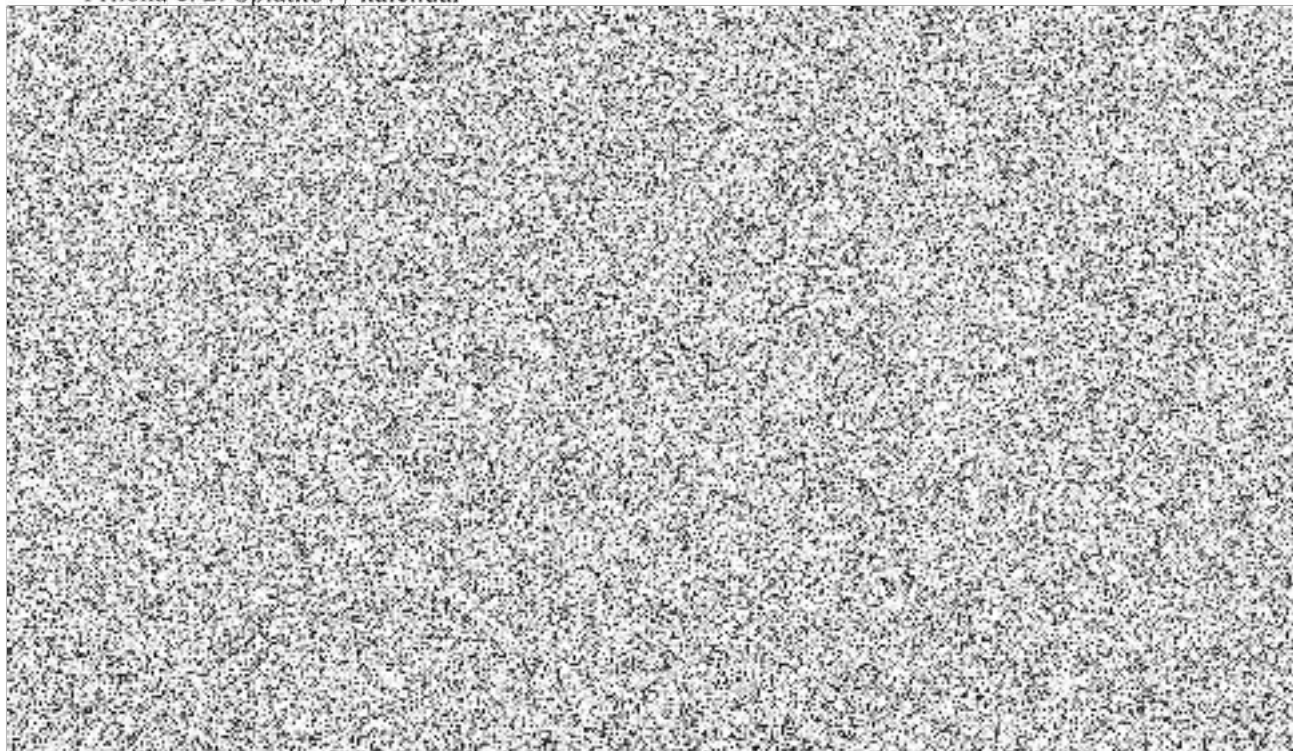
3. Přílohy:

Příloha č. 1a: Seznam pronajatých nemovitostí a jejich částí duben-červen 2009

Příloha č. 1b: Seznam pronajatých nemovitostí a jejich částí červenec- září 2009

Příloha č. 1c: Seznam pronajatých nemovitostí a jejich částí říjen- prosinec 2009

Příloha č. 2: Splátkový kalendář



Seznam pronajatých nemovitostí a jejich částí, poskytovaných pronajímatelem nájemci

Měsíc pronájmu: duben-červen 2009

| Nemovitost NP, P | č.p./č.ev. | SAP III | SAP číslo budovy | na pozemku parcelní číslo | parc. | katastrální území | obec | zápisná listina | inventurní číslo pronajímatele dle SAP | katastrální pracoviště přísl. katastrálního úřadu | Název objektu nebo pozemku | specifikace nebytových prostor dle zák. 344/1992 Sb | Číslo místnosti dle SAP R/3, modul KČ | % užívání ČD Cargo | vyměra plochy v m ² | cena za rok dle smlouvy | cena celkem dle smlouvy |
|------------------|------------|---------|------------------|---------------------------|-------|-------------------|------------------|-----------------|--|---|--|---|---------------------------------------|--------------------|--------------------------------|-------------------------|-------------------------|
| NP | 108 | 2 | 992 | 746 | | 793655 | Zruč nad Sázavou | 10677 | IC5000107410 | Zruč nad Sázavou | Zruč nad Sázavou, Výpravní budova | Kancelář | 0P08 | 100% | 21,06 | | |
| NP | 539 | 2 | 226 | 655 | | 749362 | Slaný | 6039 | IC5000114079 | Slaný | Slaný, Výpravní budova, č.p. 539 | Sklad | 1P11 | 100% | 13,42 | | |
| | | | | | | | | | | | | Šatna | 1P12 | 100% | 12,76 | | |
| | | | | | | | | | | | | Koupelna | 1P16 | 100% | 10,56 | | |
| | | | | | | | | | | | | WC ženy | 1P18 | 100% | 9,24 | | |
| | | | | | | | | | | | | WC muži | 1P19 | 100% | 9,24 | | |
| | | | | | | | | | | | | Sklad | 1P29 | 100% | 17,22 | | |
| | | | | | | | | | | | | Sklad | 1P31 | 100% | 11,34 | | |
| NP | 41 | 2 | 187 | 48 | | 693448 | Měštec | 774 | IC5000116870 | Měštec u Prahy | Měštec u Prahy, Výpravní budova, č.p. 41 | Kancelář | 0P05 | 100% | 26,04 | | |
| NP | | 1 | 319 | 4453 | | 723415 | Žižkov | 9981 | IC5000117181 | Žižkov | Praha-Žižkov, Výpravní budova, a tranzito | Zá dveří | 0P01 | 100% | 5,27 | | |
| | | | | | | | | | | | | Kancelář | 0P02 | 100% | 21,50 | | |
| | | | | | | | | | | | | Šatna | 0P03 | 100% | 15,52 | | |
| | | | | | | | | | | | | WC muži | 0P04 | 100% | 8,75 | | |
| NP | | 1 | 328 | 954 | 2 | 732451 | Praha 10 | 419 | IC5000117196 | MALEŠICE | Praha-Malešice, Utulek, a sklady kanceláře zst | Chodba | 0P04 | 100% | 8,00 | | |
| | | | | | | | | | | | | Šatna | 0P05 | 100% | 9,40 | | |
| | | | | | | | | | | | | Umývárna | 0P06 | 100% | 13,50 | | |
| | | | | | | | | | | | | Sorochy | 0P07 | 100% | 1,20 | | |
| | | | | | | | | | | | | WC | 0P08 | 100% | 5,70 | | |
| | | | | | | | | | | | | Šatna | 0P09 | 100% | 14,00 | | |
| | | | | | | | | | | | | Kancelář | 0P11 | 100% | 26,00 | | |
| NP | | 1 | 330 | 954 | 1 | 732451 | Praha 10 | 419 | IC5000117256 | MALEŠICE | Praha-Malešice, Stavební ústřední stavební | Kancelář | 0P26 | 100% | 39,00 | | |
| | | | | | | | | | | | | Kancelář | 0P31 | 100% | 20,25 | | |
| | | | | | | | | | | | | Schodiště | 1P01 | 50% | 8,70 | | |
| | | | | | | | | | | | | Zá dveří | 1P02 | 50% | 8,70 | | |
| | | | | | | | | | | | | řídová místn. | 1P03 | 100% | 1,12 | | |
| | | | | | | | | | | | | WC | 1P04 | 100% | 1,68 | | |
| | | | | | | | | | | | | WC | 1P05 | 100% | 1,33 | | |
| | | | | | | | | | | | | Chodba | 1P06 | 50% | 4,48 | | |
| | | | | | | | | | | | | Chodba | 1P07 | 50% | 1,50 | | |
| | | | | | | | | | | | | Kuchyň | 1P08 | 100% | 1,08 | | |
| | | | | | | | | | | | | Chodba | 1P09 | 50% | 1,20 | | |
| | | | | | | | | | | | | WC | 1P11 | 50% | 1,20 | | |
| | | | | | | | | | | | | Chodba | 1P12 | 50% | 1,20 | | |
| | | | | | | | | | | | | WC | 1P13 | 50% | 1,20 | | |
| | | | | | | | | | | | | Chodba | 1P14 | 50% | 19,20 | | |
| | | | | | | | | | | | | Kancelář | 1P15 | 100% | 13,05 | | |
| | | | | | | | | | | | | Kancelář | 1P16 | 100% | 13,05 | | |
| | | | | | | | | | | | | Sklad | 1P17 | 100% | 13,05 | | |
| | | | | | | | | | | | | Šatna | 1P18 | 100% | 13,05 | | |
| NP | | 1 | 331 | 4481 | 1 | 723415 | Žižkov | 9981 | IC5000117257 | Žižkov | Praha-Žižkov, Administrativní budova | Kancelář | 1P39 | 100% | 31,10 | | |
| | | | | | | | | | | | | Kancelář | 1P41 | 100% | 29,50 | | |
| | | | | | | | | | | | | Kancelář | 1P42 | 100% | 30,00 | | |
| NP | | 1 | 128 | 4029 | 1 | 730891 | Praha 8 | 7327 | IC5000117457 | LIBUŠŇ 8 | Praha-Libušň, Provozní budova, č. 1 - vše | Kancelář | 0P02 | 100% | 19,29 | | |
| | | | | | | | | | | | | Šatna | 0P08 | 100% | 20,70 | | |
| | | | | | | | | | | | | Šatna | 0P09 | 100% | 33,00 | | |
| | | | | | | | | | | | | Šatna | 0P11 | 100% | 11,50 | | |
| | | | | | | | | | | | | Chodba | 0P13 | 100% | 16,40 | | |

| | | | | | | | | | | | | | | | |
|----|-----|---|-----|-----|--|--------|-------|------|---------------|----------|--------------------------------------|---------------|------|--------|--------|
| | | | | | | | | | | | Kancelář | 0P14 | 100% | 10,96 | |
| | | | | | | | | | | | Kancelář | 0P15 | 100% | 11,36 | |
| | | | | | | | | | | | Kuchyň | 0P17 | 100% | 37,73 | |
| | | | | | | | | | | | Sklad | 0P18 | 100% | 5,20 | |
| | | | | | | | | | | | Kancelář | 0P24 | 100% | 15,40 | |
| | | | | | | | | | | | Kancelář | 0P25 | 100% | 18,36 | |
| | | | | | | | | | | | WC | 0P39 | 100% | 1,13 | |
| | | | | | | | | | | | Předsín | 0P41 | 100% | 2,56 | |
| | | | | | | | | | | | Šatna | 1P08 | 100% | 144,00 | |
| | | | | | | | | | | | Schodiště | 1P09 | 100% | 11,20 | |
| | | | | | | | | | | | Pokladna | 1P11 | 100% | 12,00 | |
| | | | | | | | | | | | Kancelář | 1P12 | 100% | 12,00 | |
| | | | | | | | | | | | Kancelář | 1P13 | 100% | 12,00 | |
| | | | | | | | | | | | Kancelář | 1P14 | 100% | 12,00 | |
| | | | | | | | | | | | Šatna | 1P15 | 100% | 12,00 | |
| | | | | | | | | | | | Šatna | 1P16 | 100% | 46,60 | |
| | | | | | | | | | | | Sprchy | 1P17 | 100% | 15,00 | |
| | | | | | | | | | | | WC ženy | 1P18 | 100% | 3,43 | |
| | | | | | | | | | | | WC muži | 1P19 | 100% | 9,60 | |
| | | | | | | | | | | | Předsín | 1P21 | 100% | 4,60 | |
| | | | | | | | | | | | Sprchy | 1P22 | 100% | 20,50 | |
| | | | | | | | | | | | Sušárna | 1P23 | 100% | 11,93 | |
| | | | | | | | | | | | Předsín | 1P24 | 100% | 6,20 | |
| | | | | | | | | | | | Šatna | 1P27 | 100% | 16,96 | |
| | | | | | | | | | | | Kancelář | 3P12 | 100% | 21,96 | |
| | | | | | | | | | | | Kancelář | 3P13 | 100% | 21,96 | |
| NP | 316 | 1 | 131 | 853 | | 731285 | Praha | 3360 | IC 5000117463 | Vysočany | Praha-Labeň, Vypravni budova, cp 316 | Sklad | 0P14 | 100% | 7,60 |
| | | | | | | | | | | | | Sklad | 0P15 | 100% | 18,00 |
| | | | | | | | | | | | | Kancelář | 0P16 | 100% | 18,00 |
| | | | | | | | | | | | | Chodba | 0P17 | 100% | 4,80 |
| | | | | | | | | | | | | Uklidová míst | 0P18 | 100% | 2,60 |
| | | | | | | | | | | | | Sklad | 0P19 | 100% | 22,40 |
| | | | | | | | | | | | | Sklad | 0P23 | 100% | 54,20 |
| | | | | | | | | | | | | WC | 0P26 | 100% | 1,40 |
| | | | | | | | | | | | | Umývárna | 0P27 | 100% | 1,80 |
| | | | | | | | | | | | | Schodiště | 1P01 | 100% | 11,20 |
| | | | | | | | | | | | | Chodba | 1P02 | 100% | 81,20 |
| | | | | | | | | | | | | Kancelář | 1P03 | 100% | 36,20 |
| | | | | | | | | | | | | Kancelář | 1P04 | 100% | 23,90 |
| | | | | | | | | | | | | Kancelář | 1P05 | 100% | 12,10 |
| | | | | | | | | | | | | Kancelář | 1P06 | 100% | 22,00 |
| | | | | | | | | | | | | Sklad | 1P07 | 100% | 14,40 |
| | | | | | | | | | | | | Kancelář | 1P08 | 100% | 35,20 |
| | | | | | | | | | | | | Kancelář | 1P48 | 100% | 14,80 |
| | | | | | | | | | | | | Kuchyň | 1P49 | 100% | 8,50 |
| | | | | | | | | | | | | WC muži | 1P52 | 100% | 13,60 |
| | | | | | | | | | | | | WC ženy | 1P53 | 100% | 12,50 |
| | | | | | | | | | | | | Předsín | 1P54 | 100% | 5,10 |
| | | | | | | | | | | | | Předsín | 1P55 | 100% | 4,30 |
| | | | | | | | | | | | | Kancelář | 1P56 | 100% | 35,20 |
| | | | | | | | | | | | | Šatna | 1P57 | 100% | 9,70 |
| | | | | | | | | | | | | Pokladna | 1P58 | 100% | 16,10 |
| | | | | | | | | | | | | Uklidová m | 1P59 | 100% | 10,30 |
| | | | | | | | | | | | | Předsín | 1P61 | 100% | 51,60 |
| | | | | | | | | | | | | Kulturní mi | 1P62 | 100% | 131,10 |
| | | | | | | | | | | | | Schodiště | 2P01 | 100% | 16,80 |
| | | | | | | | | | | | | Chodba | 2P02 | 100% | 79,20 |
| | | | | | | | | | | | | Uklidová m | 2P03 | 100% | 10,30 |
| | | | | | | | | | | | | Sklad | 2P04 | 100% | 13,40 |
| | | | | | | | | | | | | Kancelář | 2P05 | 100% | 21,80 |
| | | | | | | | | | | | | Kancelář | 2P06 | 100% | 14,30 |
| | | | | | | | | | | | | Kancelář | 2P07 | 100% | 21,80 |
| | | | | | | | | | | | | Kancelář | 2P08 | 100% | 35,90 |

| | | | | | | | | | | | | | | | |
|----|-----|---|------|------|---|--------|---------------------|-------|------------------------------|-------------|--|-------------|-------|------|----|
| | | | | | | | | | | | Kancelář | 2P09 | 100% | 36 | |
| | | | | | | | | | | | Skład | 2P52 | 100% | 32 | |
| | | | | | | | | | | | Předsíň | 2P54 | 100% | 8 | |
| | | | | | | | | | | | WC muži | 2P55 | 100% | 8 | |
| | | | | | | | | | | | Předsíň | 2P56 | 100% | 7 | |
| | | | | | | | | | | | WC ženy | 2P57 | 100% | 73 | |
| | | | | | | | | | | | Kancelář | 2P58 | 100% | 23 | |
| | | | | | | | | | | | Kancelář | 2P59 | 100% | 14 | |
| | | | | | | | | | Praha-Liben, Provozni budova | | | | | | |
| NP | | 1 | 135 | 4029 | 1 | 730891 | Praha | 7327 | IC 5000117482 | Vysocany | 2.obl.č. 23, nym st. 1 | Kancelář | 0P06 | 100% | 25 |
| NP | 43 | 2 | 279 | 42 | | 703567 | Neratovice | 4228 | IC 5000117629 | Neratovice | Neratovice, Vypravni budova, č.p. 43 | Chodba | 0P06 | 100% | 6 |
| | | | | | | | | | | | | enní místnc | 0P07 | 100% | 22 |
| | | | | | | | | | | | | enní místnc | 0P08 | 100% | 32 |
| | | | | | | | | | | | | Chodba | 0P09 | 100% | 3 |
| | | | | | | | | | | | | WC | 0P11 | 100% | 2 |
| | | | | | | | | | | | | Sprchy | 0P12 | 100% | 1 |
| | | | | | | | | | | | | Umyvárna | 0P13 | 100% | 10 |
| | | | | | | | | | | | | Kancelář | 1P07 | 100% | 22 |
| | | | | | | | | | | | | Šatna | 1P09 | 100% | 13 |
| | | | | | | | | | | | | Šatna | 1P12 | 100% | 19 |
| | | | | | | | | | | | | Kancelář | 1P13 | 100% | 33 |
| | | | | | | | | | | | | Učebna | 1P15 | 100% | 31 |
| | | | | | | | | | | | | edací místn | 1P16 | 100% | 30 |
| | | | | | | | | | | | | Kancelář | 1P17 | 100% | 35 |
| | | | | | | | | | | | | Pokladna | 1P18 | 100% | 19 |
| | | | | | | | | | | | | Skład | 1P22 | 100% | 7 |
| | | | | | | | | | | | | Datastanice | 1P29 | 100% | 28 |
| NP | | 2 | 297 | 492 | | 672718 | Kralupy nad Vltavou | 66 | IC 5000117683 | Kralupy n. | Kralupy nad Vltavou, Vypravni budova, nova | Ostatni | 1P34 | 100% | 15 |
| | | | | | | | | | | | | Umyvárna | 2P21 | 100% | 6 |
| | | | | | | | | | | | | WC muži | 2P21A | 100% | 8 |
| | | | | | | | | | | | | Ostatni | 2P23 | 100% | 13 |
| | | | | | | | | | | | | Šatna | 2P36 | 100% | 10 |
| | | | | | | | | | | | | Kancelář | 2P39 | 100% | 23 |
| | | | | | | | | | | | | Kancelář | 2P41 | 100% | 24 |
| | | | | | | | | | | | | Kancelář | 2P42 | 100% | 13 |
| NP | 30 | 1 | 297 | 816 | | 793264 | Praha | 950 | IC 5000140313 | Zličín | Praha/Zličín, Vypravni budova | Kancelář | 0P03 | 100% | 14 |
| | | | | | | | | | | | | Šatna | 0P04 | 100% | 8 |
| NP | 251 | 2 | 723 | 3813 | 1 | 665126 | Kladno | 30369 | IC 5000140394 | Krocehlavy | Kladno, Vypravni budova | Kancelář | 1P17 | 100% | 21 |
| | | | | | | | | | | | | Kancelář | 1P18 | 100% | 16 |
| | | | | | | | | | | | | Kancelář | 1P19 | 100% | 15 |
| | | | | | | | | | | | | Učebna | 1P21 | 100% | 17 |
| NP | 79 | 2 | 1010 | 106 | | 757381 | Středokluky | 595 | IC 5000140486 | Středokluk | Středokluky, Vypravni budova | Kancelář | 0P06 | 100% | 12 |
| | | | | | | | | | | | | WC ženy | 0P11 | 100% | 4 |
| NP | | 2 | 829 | 1780 | | 665169 | Dubří u Kladna | 31487 | IC 5000140498 | Dubří u Kl. | Kladno-Dubří, Skład, zboží | Kancelář | 0P01 | 100% | 31 |
| | | | | | | | | | | | | Kancelář | 0P02 | 100% | 19 |
| | | | | | | | | | | | | Kancelář | 0P03 | 100% | 20 |
| | | | | | | | | | | | | Šatna | 0P04 | 100% | 19 |
| | | | | | | | | | | | | Chodba | 0P05 | 100% | 10 |
| | | | | | | | | | | | | WC | 0P06 | 100% | 2 |
| | | | | | | | | | | | | WC | 0P07 | 100% | 2 |
| | | | | | | | | | | | | Koupelna | 0P08 | 100% | 3 |
| | | | | | | | | | | | | Chodba | 0P09 | 100% | 7 |
| | | | | | | | | | | | | Sprchy | 0P11 | 100% | 12 |
| | | | | | | | | | | | | Šatna | 0P15 | 100% | 51 |
| | | | | | | | | | | | | Chodba | 0P17 | 100% | 10 |
| | | | | | | | | | | | | Chodba | 0P18 | 100% | 5 |
| NP | | 2 | 893 | 3815 | | 665126 | Krocehlavy | 30369 | IC 5000140535 | Krocehlavy | Kladno, Zavodni pdelna, a soc zar. zst. | Šatna | 2P05 | 100% | 17 |
| | | | | | | | | | | | | Šatna | 2P06 | 100% | 39 |
| | | | | | | | | | | | | Kancelář | 2P13 | 100% | 40 |
| | | | | | | | | | | | | Kancelář | 2P14A | 100% | 13 |
| NP | 328 | 2 | 731 | 579 | | 739081 | Rakovník | 8235 | IC 5000140798 | Rakovník | Rakovník, Skład, vyprav. zboží | Kancelář | 0P01 | 100% | 9 |
| | | | | | | | | | | | | Kancelář | 0P02 | 100% | 11 |

| | | | | | | | | | | | | | | |
|----|-----|---|-----|------|--------|-----------------|------|---------------|-----------------|---------------------------------------|------------|------|------|-------|
| | | | | | | | | | | Kancelář | 0P03 | 100% | 14,0 | |
| | | | | | | | | | | Kancelář | 0P04 | 100% | 16,0 | |
| | | | | | | | | | | Kancelář | 0P05 | 100% | 7,0 | |
| | | | | | | | | | | Kancelář | 0P06 | 100% | 16,0 | |
| | | | | | | | | | | Kancelář | 0P07 | 100% | 4,0 | |
| | | | | | | | | | | WC | 0P08 | 100% | 1,0 | |
| | | | | | | | | | | Chodba | 0P09 | 100% | 6,0 | |
| | | | | | | | | | | Schodiště | 1P01 | 100% | 10,0 | |
| | | | | | | | | | | Chodba | 1P02 | 100% | 9,0 | |
| | | | | | | | | | | Chodba | 1P03 | 100% | 9,0 | |
| | | | | | | | | | | Kancelář | 1P04 | 100% | 26,0 | |
| | | | | | | | | | | Kancelář | 1P05 | 100% | 17,0 | |
| | | | | | | | | | | Kancelář | 1P06 | 100% | 25,0 | |
| NP | | 2 | 748 | 5066 | 739081 | Rakovník | 8235 | IC 5000140809 | Rakovník | Rakovník, Útulek, posun | Zádvěst | 0P01 | 100% | 4,0 |
| | | | | | | | | | | | Chodba | 0P02 | 100% | 4,0 |
| | | | | | | | | | | | enní místn | 0P03 | 100% | 20,0 |
| | | | | | | | | | | | Šatna | 0P04 | 100% | 20,0 |
| | | | | | | | | | | | WC | 0P05 | 100% | 2,0 |
| NP | 262 | 1 | 187 | 2186 | 773425 | Praha | 2438 | IC 5000145045 | Uhřetěves | Praha-Uhřetěves, Vypravní budova | Sprchy | 0P13 | 100% | 6,0 |
| | | | | | | | | | | | WC | 0P14 | 100% | 3,0 |
| | | | | | | | | | | | Kuchyň | 0P15 | 100% | 27,0 |
| | | | | | | | | | | | Šatna | 0P16 | 100% | 13,0 |
| | | | | | | | | | | | Šatna | 0P17 | 100% | 14,0 |
| | | | | | | | | | | | Kancelář | 0P18 | 100% | 19,0 |
| | | | | | | | | | | | Ostatní | 0P19 | 100% | 4,0 |
| | | | | | | | | | | | Kancelář | 0P21 | 100% | 13,0 |
| | | | | | | | | | | | Kancelář | 1P08 | 100% | 19,0 |
| | | | | | | | | | | | Kancelář | 1P09 | 100% | 14,0 |
| | | | | | | | | | | | edací míst | 1P11 | 100% | 30,0 |
| NP | 165 | 1 | 190 | 2729 | 732052 | Praha | 228 | IC 5000145052 | Hlavoň | Praha-Hlavoň, Provozní budova | Kancelář | 0P11 | 100% | 27,0 |
| NP | | 1 | 192 | 2512 | 732257 | Praha | 5445 | IC 5000145084 | Vršovice | Praha-Vršovice, Sklad, vpr. zboží | WC muži | 0P04 | 100% | 1,0 |
| | | | | | | | | | | | Kancelář | 0P07 | 100% | 25,0 |
| | | | | | | | | | | | Kancelář | 0P08 | 100% | 22,0 |
| | | | | | | | | | | | Kancelář | 0P09 | 100% | 25,0 |
| | | | | | | | | | | | Kancelář | 0P14 | 100% | 19,0 |
| | | | | | | | | | | | Pokladna | 0P15 | 100% | 21,0 |
| | | | | | | | | | | | Kancelář | 1P03 | 100% | 23,0 |
| | | | | | | | | | | | Kancelář | 1P04 | 100% | 24,0 |
| NP | 43 | 1 | 238 | 2652 | 738620 | Praha | 617 | IC 5000145254 | Radotín | Praha-Radotín, Vypravní budova | Kancelář | 0P01 | 100% | 10,0 |
| | | | | | | | | | | | Kancelář | 0P17 | 100% | 15,0 |
| | | | | | | | | | | | Kancelář | 1P24 | 100% | 28,0 |
| NP | | 2 | 455 | 3494 | 602191 | Benešov u Prahy | 6313 | IC 5000145465 | | Benešov u Prahy, Sklad, zboží a kanc. | Kancelář | 0P03 | 100% | 13,30 |
| | | | | | | | | | | | Kancelář | 0P04 | 100% | 16,50 |
| | | | | | | | | | | | Kancelář | 0P18 | 100% | 28,60 |
| | | | | | | | | | | | Kancelář | 0P19 | 100% | 13,00 |
| NP | | 2 | 457 | 3493 | 602191 | Benešov u Prahy | 6313 | IC 5000145466 | Benešov u Prahy | Benešov u Prahy, Útulek, posun | Předsíň | 0P01 | 100% | 2,00 |
| | | | | | | | | | | | WC muži | 0P02 | 100% | 1,00 |
| | | | | | | | | | | | Umývárna | 0P03 | 100% | 10,00 |
| | | | | | | | | | | | Šatna | 0P04 | 100% | 31,00 |
| | | | | | | | | | | | Kuchyň | 0P05 | 100% | 17,00 |
| | | | | | | | | | | | Šatna | 0P06 | 100% | 24,00 |
| NP | 26 | 2 | 429 | 74 | 619665 | Cerčany | 1598 | IC 5000145189 | Cerčany | Cerčany, Vypravní budova | Kancelář | 1P08 | 100% | 13,00 |
| NP | 274 | 2 | 446 | 517 | 708067 | Nučice | 945 | IC 5000145710 | Nučice u H | Nučice, Vypravní budova | Kancelář | 0P03 | 100% | 15,00 |
| | | | | | | | | | | | Kancelář | 0P04 | 100% | 13,00 |
| | | | | | | | | | | | Kancelář | 0P07 | 100% | 14,00 |
| | | | | | | | | | | | Předsíň | 0P08 | 100% | 6,00 |
| | | | | | | | | | | | Sprchy | 0P09 | 100% | 1,00 |
| NP | | 2 | 486 | 103 | 603091 | Beroun | 229 | IC 5000145743 | Jarov u Be | Beroun, Vypravní budova, s.n | Chodba | 0P02 | 100% | 5,00 |
| | | | | | | | | | | | Kancelář | 0P03 | 100% | 23,00 |
| | | | | | | | | | | | Kancelář | 0P14 | 100% | 20,00 |
| | | | | | | | | | | | Šatna | 0P15 | 100% | 8,00 |
| | | | | | | | | | | | Kancelář | 0P17 | 100% | 20,00 |
| | | | | | | | | | | | Šatna | 0P18 | 100% | 8,00 |

| | | | | | | | | | | | | | | |
|----|-----|---|-----|------|--------|----------|------|--------------|---------|--|-------------|-------|------------------|----|
| | | | | | | | | | | | Satna | 0P21 | 100 ^o | 44 |
| | | | | | | | | | | | Koupelna | 0P22 | 100 ^o | 10 |
| | | | | | | | | | | | WC | 0P23 | 100 ^o | 1 |
| | | | | | | | | | | | WC | 0P24 | 100 ^o | 1 |
| | | | | | | | | | | | Kancelář | 1P08 | 100 ^o | 10 |
| | | | | | | | | | | | Kancelář | 1P11 | 100 ^o | 11 |
| | | | | | | | | | | | Kancelář | 1P12 | 100 ^o | 10 |
| | | | | | | | | | | | Kancelář | 1P14 | 100 ^o | 24 |
| | | | | | | | | | | | Šatna | 1P17 | 100 ^o | 13 |
| | | | | | | | | | | | Chodba | 1P18 | 100 ^o | 2 |
| | | | | | | | | | | | Umývárna | 1P19 | 100 ^o | 12 |
| | | | | | | | | | | | WC | 1P21 | 100 ^o | 1 |
| | | | | | | | | | | | WC | 1P22 | 100 ^o | 1 |
| | | | | | | | | | | | Chodba | 2P01 | 100 ^o | 8 |
| | | | | | | | | | | | WC | 2P02 | 100 ^o | 2 |
| | | | | | | | | | | | Kancelář | 2P03 | 100 ^o | 32 |
| | | | | | | | | | | | Šatna | 2P04 | 100 ^o | 4 |
| NP | 129 | 2 | 514 | 4144 | 692868 | Beroun | 229 | IC5000145773 | Beroun | Beroun, Vypravní budova | Sušárna | 0P89 | 100 ^o | 13 |
| | | | | | | | | | | | Šatna | 0P91 | 100 ^o | 26 |
| | | | | | | | | | | | Ostatní | 0P92 | 100 ^o | 13 |
| | | | | | | | | | | | Ostatní | 0P93 | 100 ^o | 13 |
| | | | | | | | | | | | vozní mistr | 1P22 | 100 ^o | 28 |
| | | | | | | | | | | | Kancelář | 1P23 | 100 ^o | 11 |
| | | | | | | | | | | | Předsíň | 1P24 | 100 ^o | 7 |
| | | | | | | | | | | | Předsíň | 1P25 | 100 ^o | 11 |
| | | | | | | | | | | | Kancelář | 1P26 | 100 ^o | 8 |
| | | | | | | | | | | | Kancelář | 1P27 | 100 ^o | 19 |
| | | | | | | | | | | | Kancelář | 1P28 | 100 ^o | 19 |
| | | | | | | | | | | | Kancelář | 1P29 | 100 ^o | 19 |
| | | | | | | | | | | | Předsíň | 1P31 | 100 ^o | 3 |
| | | | | | | | | | | | WC ženy | 1P32 | 100 ^o | 6 |
| | | | | | | | | | | | Archiv | 1P19 | 100 ^o | 10 |
| | | | | | | | | | | | Kancelář | 1P21 | 100 ^o | 18 |
| | | | | | | | | | | | Chodba | 1P02A | 100 ^o | 30 |
| | | | | | | | | | | | Šatna | S106 | 100 ^o | 34 |
| NP | | 2 | 667 | 2763 | 735426 | Příbram | 9156 | IC5000197699 | Příbram | Příbram Sklad | Kancelář | 0P01 | 100 ^o | 39 |
| | | | | | | | | | | | Kancelář | 0P17 | 100 ^o | 17 |
| | | | | | | | | | | | Kancelář | 0P18 | 100 ^o | 20 |
| | | | | | | | | | | | Kancelář | 0P19 | 100 ^o | 17 |
| NP | | 1 | 214 | 2502 | 732257 | Vešovice | 5445 | IC5000145135 | Praha | Praha-Vešovice, Vypravní budova, dopravní | Šatna | 1P01 | 100 ^o | 36 |
| | | | | | | | | | | | Šatna | 1P08 | 100 ^o | 15 |
| | | | | | | | | | | | Předsíň | 1P09 | 100 ^o | 15 |
| | | | | | | | | | | | WC muži | 1P11 | 100 ^o | 11 |
| | | | | | | | | | | | Umývárna | 1P12 | 100 ^o | 11 |

za

za kva

Za Cargo

Ing. Jan Skalický ředitel RSM Pr

Měsíc pronájmu: červenec - září 2009

| číslo NP, P | číslo p.č. ev. | SA P HJ | SAP číslo budovy | na pozemku parcelní číslo | par. c. (pod) | katastrální území | obec | zápisno na LV | inventurní číslo pronajímatele dle SAP | katastr. pracoviště podle katastrálního úřadu | Název objektu nebo pozemku | specifikace nebytových prostor dle zák. 344/1992 Sb. | Číslo místnosti dle SAP R/3, modul R1 | % uzavř. ČD Cargoem | výměra plochy v m ² | cena m ² a rok dle smlouvy | cena celkem dle smlouvy |
|-------------|----------------|---------|------------------|---------------------------|---------------|-------------------|------------------|---------------|--|---|--|--|---------------------------------------|---------------------|--------------------------------|---------------------------------------|-------------------------|
| NP | 108 | 2 | 992 | 746 | | 793655 | Zruč nad Sázavou | 10677 | IC5000107410 | Zruč nad Sázavou | Zruč nad Sázavou, Výpravní budova | Kancelář | 0P08 | 100% | 21,0 | | |
| NP | 539 | 2 | 226 | 655 | | 749262 | Slaný | 6039 | IC5000114079 | Slaný | Slaný, Výpravní budova, č.p. 539 | Sklad | 1P11 | 100% | 13,4 | | |
| | | | | | | | | | | | | Satna | 1P12 | 100% | 12,7 | | |
| | | | | | | | | | | | | Koupelna | 1P16 | 100% | 10,8 | | |
| | | | | | | | | | | | | WC ženy | 1P18 | 100% | 9,2 | | |
| | | | | | | | | | | | | WC muži | 1P19 | 100% | 9,2 | | |
| | | | | | | | | | | | | Sklad | 1P29 | 100% | 17,2 | | |
| | | | | | | | | | | | | Sklad | 1P31 | 100% | 11,3 | | |
| NP | 41 | 2 | 187 | 48 | | 693448 | Městec | 774 | IC5000116870 | Městec u Prahy | Městec u Prahy, Výpravní budova, č.p. 41 | Kancelář | 0P05 | 100% | 26,6 | | |
| NP | | 1 | 319 | 4453 | | 727415 | Žižkov | 9981 | IC5000117181 | Žižkov | Praha-Žižkov, Výpravní budova, a tranzito | Zadveří | 0P01 | 100% | 5,2 | | |
| | | | | | | | | | | | | Kancelář | 0P02 | 100% | 21,4 | | |
| | | | | | | | | | | | | Satna | 0P03 | 100% | 15,4 | | |
| | | | | | | | | | | | | WC muži | 0P04 | 100% | 8,7 | | |
| NP | | 1 | 328 | 954 | 2 | 732451 | Praha 10 | 419 | IC5000117196 | MALEŠICE | Praha-Malešice, Utulek, a sklady,kancelare zst | Chodba | 0P04 | 100% | 8,6 | | |
| | | | | | | | | | | | | Satna | 0P05 | 100% | 9,4 | | |
| | | | | | | | | | | | | Umyvárna | 0P06 | 100% | 13,3 | | |
| | | | | | | | | | | | | Sprchy | 0P07 | 100% | 1,2 | | |
| | | | | | | | | | | | | WC | 0P08 | 100% | 5,3 | | |
| | | | | | | | | | | | | Satna | 0P09 | 100% | 14,6 | | |
| | | | | | | | | | | | | Kancelář | 0P11 | 100% | 28,0 | | |
| NP | | 1 | 330 | 954 | 1 | 732451 | Praha 10 | 419 | IC5000117256 | MALEŠICE | Praha-Malešice, Stavědlo, střední stavědlo | Kancelář | 0P26 | 100% | 39,8 | | |
| | | | | | | | | | | | | Kancelář | 0P31 | 100% | 20,3 | | |
| | | | | | | | | | | | | Schodiště | 1P01 | 50% | 8,1 | | |
| | | | | | | | | | | | | Zadveří | 1P02 | 50% | 8,1 | | |
| | | | | | | | | | | | | řádová místn | 1P03 | 100% | 1,1 | | |
| | | | | | | | | | | | | WC | 1P04 | 100% | 1,1 | | |
| | | | | | | | | | | | | WC | 1P05 | 100% | 1,1 | | |
| | | | | | | | | | | | | Chodba | 1P06 | 50% | 4,4 | | |
| | | | | | | | | | | | | Chodba | 1P07 | 50% | 1,1 | | |
| | | | | | | | | | | | | Kuchyň | 1P08 | 100% | 1,0 | | |
| | | | | | | | | | | | | Chodba | 1P09 | 50% | 1,1 | | |
| | | | | | | | | | | | | WC | 1P11 | 50% | 1,1 | | |
| | | | | | | | | | | | | Chodba | 1P12 | 50% | 1,1 | | |
| | | | | | | | | | | | | WC | 1P13 | 50% | 1,1 | | |
| | | | | | | | | | | | | Chodba | 1P14 | 50% | 19,2 | | |
| | | | | | | | | | | | | Kancelář | 1P15 | 100% | 13,1 | | |
| | | | | | | | | | | | | Kancelář | 1P16 | 100% | 13,1 | | |
| | | | | | | | | | | | | Sklad | 1P17 | 100% | 13,1 | | |
| | | | | | | | | | | | | Satna | 1P18 | 100% | 13,1 | | |
| NP | | 1 | 331 | 1481 | 1 | 727415 | Žižkov | 9981 | IC5000117257 | Žižkov | Praha-Žižkov, Administrativní budova | Kancelář | 1P39 | 100% | 31,1 | | |
| | | | | | | | | | | | | Kancelář | 1P41 | 100% | 29,3 | | |
| | | | | | | | | | | | | Kancelář | 1P42 | 100% | 30,6 | | |
| NP | | 1 | 128 | 1029 | 1 | 730891 | Praha 8 | 7327 | IC5000117457 | LIBEŇSKO | Praha-Libeň, Provozní budova, č.1 - vjezd | Kancelář | 0P02 | 100% | 19,2 | | |
| | | | | | | | | | | | | Satna | 0P08 | 100% | 20,7 | | |
| | | | | | | | | | | | | Satna | 0P09 | 100% | 33,0 | | |
| | | | | | | | | | | | | Satna | 0P11 | 100% | 11,5 | | |
| | | | | | | | | | | | | Chodba | 0P13 | 100% | 16,4 | | |

| | | | | | | | | | | | | | | |
|----|-----|---|-----|-----|--------|-------|------|--------------|----------|--------------------------------------|----------------|------|------|-------|
| | | | | | | | | | | | Kancelář | 0P14 | 100% | 10,5 |
| | | | | | | | | | | | Kancelář | 0P15 | 100% | 11,3 |
| | | | | | | | | | | | Kuchyně | 0P17 | 100% | 37,7 |
| | | | | | | | | | | | Sklad | 0P18 | 100% | 5,2 |
| | | | | | | | | | | | Kancelář | 0P24 | 100% | 15,2 |
| | | | | | | | | | | | Kancelář | 0P25 | 100% | 18,2 |
| | | | | | | | | | | | WC | 0P39 | 100% | 1,7 |
| | | | | | | | | | | | Předsíň | 0P41 | 100% | 2,9 |
| | | | | | | | | | | | Šatna | 1P08 | 100% | 144,0 |
| | | | | | | | | | | | Schodiště | 1P09 | 100% | 11,7 |
| | | | | | | | | | | | Pokladna | 1P11 | 100% | 12,0 |
| | | | | | | | | | | | Kancelář | 1P12 | 100% | 12,0 |
| | | | | | | | | | | | Kancelář | 1P13 | 100% | 12,0 |
| | | | | | | | | | | | Kancelář | 1P14 | 100% | 12,0 |
| | | | | | | | | | | | Šatna | 1P15 | 100% | 12,0 |
| | | | | | | | | | | | Šatna | 1P16 | 100% | 46,6 |
| | | | | | | | | | | | Sprchy | 1P17 | 100% | 15,0 |
| | | | | | | | | | | | WC ženy | 1P18 | 100% | 3,4 |
| | | | | | | | | | | | WC muži | 1P19 | 100% | 9,6 |
| | | | | | | | | | | | Předsíň | 1P21 | 100% | 4,6 |
| | | | | | | | | | | | Sprchy | 1P22 | 100% | 20,1 |
| | | | | | | | | | | | Sušárna | 1P23 | 100% | 11,3 |
| | | | | | | | | | | | Předsíň | 1P24 | 100% | 6,7 |
| | | | | | | | | | | | Šatna | 1P27 | 100% | 16,5 |
| | | | | | | | | | | | Kancelář | 3P12 | 100% | 21,5 |
| | | | | | | | | | | | Kancelář | 3P13 | 100% | 21,5 |
| BP | 316 | 1 | 131 | 853 | 731285 | Praha | 3360 | IC5000117465 | Vysocany | Praha-Liben, Vypravni budova, cp.316 | Sklad | 0P14 | 100% | 7,6 |
| | | | | | | | | | | | Sklad | 0P15 | 100% | 18,0 |
| | | | | | | | | | | | Kancelář | 0P16 | 100% | 18,0 |
| | | | | | | | | | | | Chodba | 0P17 | 100% | 4,8 |
| | | | | | | | | | | | Uklidová místn | 0P18 | 100% | 2,6 |
| | | | | | | | | | | | Sklad | 0P19 | 100% | 22,4 |
| | | | | | | | | | | | Sklad | 0P23 | 100% | 54,3 |
| | | | | | | | | | | | WC | 0P26 | 100% | 1,4 |
| | | | | | | | | | | | Umývárna | 0P27 | 100% | 1,8 |
| | | | | | | | | | | | Schodiště | 1P01 | 100% | 11,7 |
| | | | | | | | | | | | Chodba | 1P02 | 100% | 81,2 |
| | | | | | | | | | | | Kancelář | 1P03 | 100% | 36,2 |
| | | | | | | | | | | | Kancelář | 1P04 | 100% | 23,9 |
| | | | | | | | | | | | Kancelář | 1P05 | 100% | 12,7 |
| | | | | | | | | | | | Kancelář | 1P06 | 100% | 22,0 |
| | | | | | | | | | | | Sklad | 1P07 | 100% | 14,4 |
| | | | | | | | | | | | Kancelář | 1P08 | 100% | 35,7 |
| | | | | | | | | | | | Kancelář | 1P48 | 100% | 14,8 |
| | | | | | | | | | | | Kuchyně | 1P49 | 100% | 8,7 |
| | | | | | | | | | | | WC muži | 1P52 | 100% | 13,6 |
| | | | | | | | | | | | WC ženy | 1P53 | 100% | 12,4 |
| | | | | | | | | | | | Předsíň | 1P54 | 100% | 5,7 |
| | | | | | | | | | | | Předsíň | 1P55 | 100% | 4,3 |
| | | | | | | | | | | | Kancelář | 1P56 | 100% | 35,2 |
| | | | | | | | | | | | Šatna | 1P57 | 100% | 9,7 |
| | | | | | | | | | | | Pokladna | 1P58 | 100% | 16,7 |
| | | | | | | | | | | | Uklidová m | 1P59 | 100% | 10,3 |
| | | | | | | | | | | | Předsíň | 1P61 | 100% | 51,6 |
| | | | | | | | | | | | Kulturní m | 1P62 | 100% | 131,6 |
| | | | | | | | | | | | Schodiště | 2P01 | 100% | 16,8 |
| | | | | | | | | | | | Chodba | 2P02 | 100% | 79,2 |
| | | | | | | | | | | | Uklidová m | 2P03 | 100% | 10,3 |
| | | | | | | | | | | | Sklad | 2P04 | 100% | 13,4 |
| | | | | | | | | | | | Kancelář | 2P05 | 100% | 21,8 |
| | | | | | | | | | | | Kancelář | 2P06 | 100% | 14,3 |
| | | | | | | | | | | | Kancelář | 2P07 | 100% | 21,8 |
| | | | | | | | | | | | Kancelář | 2P08 | 100% | 35,8 |

| | | | | | | | | | | | | | | | |
|----|-----|---|------|------|---|--------|-------------------|-------|---------------|---------------|--|----------|------|------|----|
| | | | | | | | | | | | Kancelář | 2P09 | 100% | 36 | |
| | | | | | | | | | | | Sklad | 2P52 | 100% | 32 | |
| | | | | | | | | | | | Předsíň | 2P54 | 100% | 8 | |
| | | | | | | | | | | | WC muži | 2P55 | 100% | 8 | |
| | | | | | | | | | | | Předsíň | 2P56 | 100% | 7 | |
| | | | | | | | | | | | WC ženy | 2P57 | 100% | 73 | |
| | | | | | | | | | | | Kancelář | 2P58 | 100% | 23 | |
| | | | | | | | | | | | Kancelář | 2P59 | 100% | 14 | |
| NP | | 1 | 135 | 4029 | 1 | 730891 | Praha | 7327 | IC 5000117482 | Vysočany | Praha-Libeň, Provozni budova | Kancelář | 0P06 | 100% | 25 |
| NP | 43 | 2 | 279 | 42 | | 703567 | Neratovice | 4228 | IC 5000117629 | Neratovice | Neratovice, Vypravni budova , č.p.13 | Chodba | 0P06 | 100% | 6 |
| | | | | | | | | | | | enní místno | 0P07 | 100% | 22 | |
| | | | | | | | | | | | enní místno | 0P08 | 100% | 32 | |
| | | | | | | | | | | | Chodba | 0P09 | 100% | 3 | |
| | | | | | | | | | | | WC | 0P11 | 100% | 2 | |
| | | | | | | | | | | | Sprchy | 0P12 | 100% | 1 | |
| | | | | | | | | | | | Umývárna | 0P13 | 100% | 10 | |
| | | | | | | | | | | | Kancelář | 1P07 | 100% | 22 | |
| | | | | | | | | | | | Šatna | 1P09 | 100% | 13 | |
| | | | | | | | | | | | Šatna | 1P12 | 100% | 19 | |
| | | | | | | | | | | | Kancelář | 1P13 | 100% | 33 | |
| | | | | | | | | | | | Učebna | 1P15 | 100% | 31 | |
| | | | | | | | | | | | edací místn | 1P16 | 100% | 30 | |
| | | | | | | | | | | | Kancelář | 1P17 | 100% | 35 | |
| | | | | | | | | | | | Pokladna | 1P18 | 100% | 19 | |
| | | | | | | | | | | | Sklad | 1P22 | 100% | 7 | |
| | | | | | | | | | | | Datastanice | 1P29 | 100% | 28 | |
| NP | | 2 | 297 | 492 | | 672748 | Kralupy nad Vltav | 06 | IC 5000117683 | Kralupy nad | Kralupy nad Vltavou, Vypravni budova, nová | Ostatní | 1P34 | 100% | 15 |
| | | | | | | | | | | | Umývárna | 2P21 | 100% | 6 | |
| | | | | | | | | | | | WC muži | 2P21A | 100% | 8 | |
| | | | | | | | | | | | Ostatní | 2P23 | 100% | 13 | |
| | | | | | | | | | | | Šatna | 2P38 | 100% | 10 | |
| | | | | | | | | | | | Kancelář | 2P39 | 100% | 23 | |
| | | | | | | | | | | | Kancelář | 2P41 | 100% | 24 | |
| | | | | | | | | | | | Kancelář | 2P42 | 100% | 13 | |
| NP | 251 | 2 | 723 | 3813 | 1 | 665126 | Kladno | 30369 | IC 5000110394 | Kročehlavy | Kladno, Vypravni budova | Učebna | 1P21 | 100% | 17 |
| NP | 79 | 2 | 1010 | 106 | | 757381 | Středokluky | 595 | IC 5000110480 | Středokluky | Středokluky, Vypravni budova | Kancelář | 0P06 | 100% | 12 |
| | | | | | | | | | | | WC ženy | 0P11 | 100% | 4 | |
| NP | | 2 | 839 | 1780 | | 665169 | Dubí u Kladna | 31487 | IC 5000110498 | Dubí u Kladna | Kladno-Dubí, Sklad, zboží | Kancelář | 0P01 | 100% | 31 |
| | | | | | | | | | | | Kancelář | 0P02 | 100% | 19 | |
| | | | | | | | | | | | Kancelář | 0P03 | 100% | 20 | |
| | | | | | | | | | | | Šatna | 0P04 | 100% | 19 | |
| | | | | | | | | | | | Chodba | 0P05 | 100% | 10 | |
| | | | | | | | | | | | WC | 0P06 | 100% | 2 | |
| | | | | | | | | | | | WC | 0P07 | 100% | 2 | |
| | | | | | | | | | | | Koupelna | 0P08 | 100% | 3 | |
| | | | | | | | | | | | Chodba | 0P09 | 100% | 7 | |
| | | | | | | | | | | | Sprchy | 0P11 | 100% | 12 | |
| | | | | | | | | | | | Šatna | 0P15 | 100% | 51 | |
| | | | | | | | | | | | Chodba | 0P17 | 100% | 10 | |
| | | | | | | | | | | | Chodba | 0P18 | 100% | 5 | |
| NP | | 2 | 893 | 3815 | | 665126 | Kročehlavy | 30369 | IC 5000110535 | Kročehlavy | Kladno, Zavedni jedlna, a soc zai zst | Šatna | 2P05 | 100% | 17 |
| NP | 328 | 2 | 731 | 579 | | 739081 | Rakovník | 8235 | IC 5000110798 | Rakovník | Rakovník, Sklad, vyprav zboží | Kancelář | 0P01 | 100% | 9 |
| | | | | | | | | | | | Kancelář | 0P02 | 100% | 11 | |
| | | | | | | | | | | | Kancelář | 0P03 | 100% | 14 | |
| | | | | | | | | | | | Kancelář | 0P04 | 100% | 16 | |
| | | | | | | | | | | | Kancelář | 0P05 | 100% | 7 | |
| | | | | | | | | | | | Kancelář | 0P06 | 100% | 16 | |
| | | | | | | | | | | | Kancelář | 0P07 | 100% | 4 | |
| | | | | | | | | | | | WC | 0P08 | 100% | 1 | |
| | | | | | | | | | | | Chodba | 0P09 | 100% | 6 | |
| | | | | | | | | | | | Schodiště | 1P01 | 100% | 10 | |

| | | | | | | | | | | | | | | |
|----|-----|---|-----|------|--------|-----------------|------|--------------|---------------|--------------------------------------|-------------|------|------|------|
| | | | | | | | | | | | Chodba | 1P02 | 100% | 9,6 |
| | | | | | | | | | | | Chodba | 1P03 | 100% | 9,6 |
| | | | | | | | | | | | Kancelář | 1P04 | 100% | 26,6 |
| | | | | | | | | | | | Kancelář | 1P05 | 100% | 17,4 |
| | | | | | | | | | | | Kancelář | 1P06 | 100% | 25,8 |
| NP | | 2 | 748 | 5066 | 739081 | Rakovník | 8255 | IC5000110809 | Rakovník | Rakovník, Útulek, posm | Zadverí | 0P01 | 100% | 4,4 |
| | | | | | | | | | | | Chodba | 0P02 | 100% | 4,4 |
| | | | | | | | | | | | enní místno | 0P03 | 100% | 20,6 |
| | | | | | | | | | | | Šatna | 0P04 | 100% | 20,6 |
| | | | | | | | | | | | WC | 0P05 | 100% | 2,2 |
| NP | 262 | 1 | 187 | 2186 | 773425 | Praha | 2138 | IC5000115045 | Uhřetěves | Praha-Uhřetěves, Vypravni budova | Sprchy | 0P13 | 100% | 6,6 |
| | | | | | | | | | | | WC | 0P14 | 100% | 3,3 |
| | | | | | | | | | | | Kuchyň | 0P15 | 100% | 27,8 |
| | | | | | | | | | | | Šatna | 0P16 | 100% | 13,3 |
| | | | | | | | | | | | Šatna | 0P17 | 100% | 14,4 |
| | | | | | | | | | | | Kancelář | 0P18 | 100% | 19,4 |
| | | | | | | | | | | | Ostatní | 0P19 | 100% | 4,4 |
| | | | | | | | | | | | Kancelář | 0P21 | 100% | 13,3 |
| | | | | | | | | | | | Kancelář | 1P08 | 100% | 19,4 |
| | | | | | | | | | | | Kancelář | 1P09 | 100% | 14,4 |
| | | | | | | | | | | | edací mistr | 1P11 | 100% | 30,6 |
| NP | 165 | 1 | 190 | 2729 | 732052 | Praha | 225 | IC5000115052 | Hostivar | Praha-Hostivar, Prevozni budova | Kancelář | 0P11 | 100% | 27,8 |
| NP | | 1 | 192 | 2512 | 732257 | Praha | 5145 | IC5000115084 | Vršovice | Praha-Vršovice, Sklad, výpr zboží | WC muži | 0P04 | 100% | 1,1 |
| | | | | | | | | | | | Kancelář | 0P07 | 100% | 25,1 |
| | | | | | | | | | | | Kancelář | 0P08 | 100% | 22,6 |
| | | | | | | | | | | | Kancelář | 0P09 | 100% | 25,1 |
| | | | | | | | | | | | Kancelář | 0P14 | 100% | 19,4 |
| | | | | | | | | | | | Pokladna | 0P15 | 100% | 21,1 |
| NP | 43 | 1 | 238 | 2652 | 778620 | Praha | 617 | IC5000115254 | Radotín | Praha-Radotín, Vypravni budova | Kancelář | 0P01 | 100% | 10,2 |
| | | | | | | | | | | | Kancelář | 0P17 | 100% | 15,2 |
| | | | | | | | | | | | Kancelář | 1P24 | 100% | 28,8 |
| NP | | 2 | 455 | 3494 | 602191 | Beněšov u Prahy | 6313 | IC5000115465 | | Beněšov u Prahy, Sklad, zboží a kanc | Kancelář | 0P03 | 100% | 13,3 |
| | | | | | | | | | | | Kancelář | 0P04 | 100% | 16,5 |
| | | | | | | | | | | | Kancelář | 0P18 | 100% | 26,5 |
| | | | | | | | | | | | Kancelář | 0P19 | 100% | 13,3 |
| NP | | 2 | 457 | 3493 | 602191 | Beněšov u Prahy | 6313 | IC5000115466 | Beněšov u Pr | Beněšov u Prahy, Útulek, posm | Předsíň | 0P01 | 100% | 2,2 |
| | | | | | | | | | | | WC muži | 0P02 | 100% | 1,1 |
| | | | | | | | | | | | Umyvárna | 0P03 | 100% | 10,2 |
| | | | | | | | | | | | Šatna | 0P04 | 100% | 31,1 |
| | | | | | | | | | | | Kuchyň | 0P05 | 100% | 17,1 |
| | | | | | | | | | | | Šatna | 0P06 | 100% | 24,1 |
| NP | 26 | 2 | 129 | 71 | 619663 | Čerčany | 1598 | IC5000115489 | Čerčany | Čerčany, Vypravni budova | Kancelář | 1P08 | 100% | 13,1 |
| NP | 271 | 3 | 146 | 517 | 708062 | Nučec | 915 | IC5000115710 | Nučec u Rud | Nučec, Vypravni budova | Kancelář | 0P03 | 100% | 15,1 |
| | | | | | | | | | | | Kancelář | 0P04 | 100% | 13,1 |
| | | | | | | | | | | | Kancelář | 0P07 | 100% | 14,1 |
| | | | | | | | | | | | Předsíň | 0P08 | 100% | 6,1 |
| | | | | | | | | | | | Sprchy | 0P09 | 100% | 1,1 |
| NP | | 2 | 186 | 103 | 605091 | Beroun | 229 | IC5000115743 | Járov u Berou | Beroun, Vypravni budova, s n | Chodba | 0P02 | 100% | 5,1 |
| | | | | | | | | | | | Kancelář | 0P03 | 100% | 23,1 |
| | | | | | | | | | | | Kancelář | 0P14 | 100% | 20,1 |
| | | | | | | | | | | | Šatna | 0P15 | 100% | 8,1 |
| | | | | | | | | | | | Kancelář | 0P17 | 100% | 20,1 |
| | | | | | | | | | | | Šatna | 0P18 | 100% | 8,1 |
| | | | | | | | | | | | Šatna | 0P21 | 100% | 44,1 |
| | | | | | | | | | | | Koupelna | 0P22 | 100% | 10,1 |
| | | | | | | | | | | | WC | 0P23 | 100% | 1,1 |
| | | | | | | | | | | | WC | 0P24 | 100% | 1,1 |
| | | | | | | | | | | | Kancelář | 1P08 | 100% | 10,1 |
| | | | | | | | | | | | Kancelář | 1P11 | 100% | 11,1 |
| | | | | | | | | | | | Kancelář | 1P12 | 100% | 10,1 |
| | | | | | | | | | | | Kancelář | 1P14 | 100% | 24,1 |
| | | | | | | | | | | | Šatna | 1P17 | 100% | 13,1 |
| | | | | | | | | | | | Chodba | 1P18 | 100% | 2,1 |

| | | | | | | | | | | | | | | | |
|----|-----|---|-----|------|--------|---------|----------|--------------|--------------|-------------------------|--|-------|------|--------|-------|
| | | | | | | | | | | | Umyvárna | 1P19 | 100% | 12,10 | |
| | | | | | | | | | | | WC | 1P21 | 100% | 1,40 | |
| | | | | | | | | | | | WC | 1P22 | 100% | 1,40 | |
| | | | | | | | | | | | Chodba | 2P01 | 100% | 8,00 | |
| | | | | | | | | | | | WC | 2P02 | 100% | 2,00 | |
| | | | | | | | | | | | Kancelář | 2P03 | 100% | 32,20 | |
| | | | | | | | | | | | Šatna | 2P04 | 100% | 4,20 | |
| NP | 129 | 2 | 514 | 4141 | 602868 | Beroun | 229 | IC5000145773 | Beroun | Beroun, Vypravni budova | Sušárna | 0P89 | 100% | 13,00 | |
| | | | | | | | | | | | Šatna | 0P91 | 100% | 26,50 | |
| | | | | | | | | | | | Ostální | 0P92 | 100% | 13,00 | |
| | | | | | | | | | | | Ostální | 0P93 | 100% | 13,00 | |
| | | | | | | | | | | | vozní mistr | 1P22 | 100% | 28,50 | |
| | | | | | | | | | | | Kancelář | 1P23 | 100% | 11,50 | |
| | | | | | | | | | | | Předsíň | 1P24 | 100% | 7,00 | |
| | | | | | | | | | | | Předsíň | 1P25 | 100% | 11,50 | |
| | | | | | | | | | | | Kancelář | 1P26 | 100% | 8,00 | |
| | | | | | | | | | | | Kancelář | 1P27 | 100% | 19,00 | |
| | | | | | | | | | | | Kancelář | 1P28 | 100% | 19,00 | |
| | | | | | | | | | | | Kancelář | 1P29 | 100% | 19,00 | |
| | | | | | | | | | | | Předsíň | 1P31 | 100% | 3,00 | |
| | | | | | | | | | | | WC ženy | 1P32 | 100% | 6,50 | |
| | | | | | | | | | | | Archiv | 1P19 | 100% | 10,00 | |
| | | | | | | | | | | | Kancelář | 1P21 | 100% | 18,00 | |
| | | | | | | | | | | | Chodba | 1P02A | 100% | 30,00 | |
| | | | | | | | | | | | Šatna | S106 | 100% | 34,000 | |
| NP | | 2 | 667 | 2763 | 735426 | Příbram | 9156 | IC5000197699 | Příbram | Příbram, Sklad | Kancelář | 0P01 | 100% | 39,00 | |
| | | | | | | | | | | | Kancelář | 0P17 | 100% | 17,50 | |
| | | | | | | | | | | | Kancelář | 0P18 | 100% | 20,00 | |
| | | | | | | | | | | | Kancelář | 0P19 | 100% | 17,50 | |
| NP | | 1 | 211 | 2502 | 1 | 732257 | Višovice | 5445 | IC5000145135 | Praha | Praha-Višovice, Vypravni budova, dopr. pavilon | Šatna | 1P01 | 100% | 36,90 |
| | | | | | | | | | | | Šatna | 1P08 | 100% | 15,90 | |
| | | | | | | | | | | | Předsíň | 1P09 | 100% | 15,90 | |
| | | | | | | | | | | | WC muži | 1P11 | 100% | 11,00 | |
| | | | | | | | | | | | Umyvárna | 1P12 | 100% | 11,00 | |

za rok

za kvarta

Za Cargo

Ing. Jan Skalický, ředitel RSM Praha

Seznam pronajatých nemovitostí a jejich částí, poskytovaných pronajímatelem nájemci

Měsíc pronájmu: říjen - prosinec 2009

| Nemovitost NP, P | č p /č ev | SAP HJ | SAP číslo budovy | na pozemku parcelní číslo | parce pod | katastrální území | obec | zapsáno na LV | inventurní číslo pronajímatele dle SAP | katastr. pracoviště přísl. katastrálního úřadu | Název objektu nebo pozemku | specifikace nebytových prostor dle zák 344/1992 Sb | Číslo místnosti dle SAP R/3, modul RF | % užívání ČD Cargem | výměra plochy v m2 | cena / m ² a rok dle smlouvy | cena celkem dle smlouvy |
|------------------|-----------|--------|------------------|---------------------------|-----------|-------------------|------------------|---------------|--|--|--|--|---------------------------------------|---------------------|--------------------|---|-------------------------|
| NP | 108 | 2 | 992 | 746 | | 793655 | Zruč nad Sázavou | 10677 | IC5000107410 | Zruč nad Sáza | Zruč nad Sázavou, Výpravní budova | Kancelář | 0P08 | 100% | 21,0 | | |
| NP | 539 | 2 | 226 | 655 | | 749362 | Slaný | 6039 | IC5000114079 | Slaný | Slaný, Výpravní budova, č p 539 | Sklad | 1P11 | 100% | 13,4 | | |
| | | | | | | | | | | | | Šatna | 1P12 | 100% | 12,7 | | |
| | | | | | | | | | | | | Koupelna | 1P16 | 100% | 10,5 | | |
| | | | | | | | | | | | | WC ženy | 1P18 | 100% | 9,2 | | |
| | | | | | | | | | | | | WC muži | 1P19 | 100% | 9,2 | | |
| | | | | | | | | | | | | Sklad | 1P29 | 100% | 17,2 | | |
| | | | | | | | | | | | | Sklad | 1P31 | 100% | 11,3 | | |
| NP | 41 | 2 | 187 | 48 | | 693448 | Měšice | 774 | IC5000116870 | Měšice u Pra | Měšice u Prahy, Výpravní budova, č p 41 | Kancelář | 0P05 | 100% | 26,0 | | |
| NP | | 1 | 319 | 4453 | | 727415 | Žižkov | 9981 | IC5000117181 | Žižkov | Praha-Žižkov, Výpravní budova, a tranzito | Zá dveří | 0P01 | 100% | 5,2 | | |
| | | | | | | | | | | | | Kancelář | 0P02 | 100% | 21,5 | | |
| | | | | | | | | | | | | Šatna | 0P03 | 100% | 15,5 | | |
| | | | | | | | | | | | | WC muži | 0P04 | 100% | 8,7 | | |
| NP | | 1 | 328 | 954 | 2 | 732451 | Praha 10 | 419 | IC5000117196 | MALEŠICE | Praha-Malešice, Utulek, a sklady,kanceláře žst | Chodba | 0P04 | 100% | 8,0 | | |
| | | | | | | | | | | | | Šatna | 0P05 | 100% | 9,4 | | |
| | | | | | | | | | | | | Umývárna | 0P06 | 100% | 13,5 | | |
| | | | | | | | | | | | | Sprchy | 0P07 | 100% | 1,2 | | |
| | | | | | | | | | | | | WC | 0P08 | 100% | 5,7 | | |
| | | | | | | | | | | | | Šatna | 0P09 | 100% | 14,0 | | |
| | | | | | | | | | | | | Kancelář | 0P11 | 100% | 28,0 | | |
| NP | | 1 | 330 | 954 | 1 | 732451 | Praha 10 | 419 | IC5000117256 | MALEŠICE | Praha-Malešice, Stavědlo, ústřední stavědlo | Kancelář | 0P26 | 100% | 39,0 | | |
| | | | | | | | | | | | | Kancelář | 0P31 | 100% | 20,2 | | |
| | | | | | | | | | | | | Schodiště | 1P01 | 50% | 8,7 | | |
| | | | | | | | | | | | | Zá dveří | 1P02 | 50% | 8,7 | | |
| | | | | | | | | | | | | řídová místr | 1P03 | 100% | 1,1 | | |
| | | | | | | | | | | | | WC | 1P04 | 100% | 1,6 | | |
| | | | | | | | | | | | | WC | 1P05 | 100% | 1,3 | | |
| | | | | | | | | | | | | Chodba | 1P06 | 50% | 4,4 | | |
| | | | | | | | | | | | | Chodba | 1P07 | 50% | 1,5 | | |
| | | | | | | | | | | | | Kuchyň | 1P08 | 100% | 1,0 | | |
| | | | | | | | | | | | | Chodba | 1P09 | 50% | 1,2 | | |
| | | | | | | | | | | | | WC | 1P11 | 50% | 1,2 | | |
| | | | | | | | | | | | | Chodba | 1P12 | 50% | 1,2 | | |
| | | | | | | | | | | | | WC | 1P13 | 50% | 1,2 | | |
| | | | | | | | | | | | | Chodba | 1P14 | 50% | 19,2 | | |
| | | | | | | | | | | | | Kancelář | 1P15 | 100% | 13,0 | | |
| | | | | | | | | | | | | Kancelář | 1P16 | 100% | 13,0 | | |
| | | | | | | | | | | | | Sklad | 1P17 | 100% | 13,0 | | |
| | | | | | | | | | | | | Šatna | 1P18 | 100% | 13,0 | | |
| NP | | 1 | 331 | 4481 | 1 | 727415 | Žižkov | 9981 | IC5000117257 | Žižkov | Praha-Žižkov, Administrativní budova | Kancelář | 1P39 | 100% | 31,1 | | |
| | | | | | | | | | | | | Kancelář | 1P41 | 100% | 29,5 | | |
| | | | | | | | | | | | | Kancelář | 1P42 | 100% | 30,0 | | |
| NP | | 1 | 128 | 4029 | 1 | 730891 | Praha 8 | 7327 | IC5000117457 | LIBEŇ 8 | Praha-Libeň, Provozní budova, č 1 - věž | Kancelář | 0P02 | 100% | 19,2 | | |
| | | | | | | | | | | | | Šatna | 0P08 | 100% | 20,7 | | |
| | | | | | | | | | | | | Šatna | 0P09 | 100% | 33,0 | | |
| | | | | | | | | | | | | Šatna | 0P11 | 100% | 11,5 | | |
| | | | | | | | | | | | | Chodba | 0P13 | 100% | 16,4 | | |

| | | | | | | | | | | | | | | | |
|----|-----|---|-----|-----|--|--------|-------|------|--------------|----------|--------------------------------------|----------------|------|--------|--------|
| | | | | | | | | | | | Kancelář | 0P14 | 100% | 10,90 | |
| | | | | | | | | | | | Kancelář | 0P15 | 100% | 11,30 | |
| | | | | | | | | | | | Kuchyň | 0P17 | 100% | 37,75 | |
| | | | | | | | | | | | Sklad | 0P18 | 100% | 5,20 | |
| | | | | | | | | | | | Kancelář | 0P24 | 100% | 15,40 | |
| | | | | | | | | | | | Kancelář | 0P25 | 100% | 18,30 | |
| | | | | | | | | | | | WC | 0P39 | 100% | 1,12 | |
| | | | | | | | | | | | Předsíň | 0P41 | 100% | 2,50 | |
| | | | | | | | | | | | Šatna | 1P08 | 100% | 144,00 | |
| | | | | | | | | | | | Schodiště | 1P09 | 100% | 11,20 | |
| | | | | | | | | | | | Pokladna | 1P11 | 100% | 12,00 | |
| | | | | | | | | | | | Kancelář | 1P12 | 100% | 12,00 | |
| | | | | | | | | | | | Kancelář | 1P13 | 100% | 12,00 | |
| | | | | | | | | | | | Kancelář | 1P14 | 100% | 12,00 | |
| | | | | | | | | | | | Šatna | 1P15 | 100% | 12,00 | |
| | | | | | | | | | | | Šatna | 1P16 | 100% | 46,60 | |
| | | | | | | | | | | | Sprchy | 1P17 | 100% | 15,05 | |
| | | | | | | | | | | | WC ženy | 1P18 | 100% | 3,40 | |
| | | | | | | | | | | | WC muži | 1P19 | 100% | 9,60 | |
| | | | | | | | | | | | Předsíň | 1P21 | 100% | 4,60 | |
| | | | | | | | | | | | Sprchy | 1P22 | 100% | 20,50 | |
| | | | | | | | | | | | Sušárna | 1P23 | 100% | 11,90 | |
| | | | | | | | | | | | Předsíň | 1P24 | 100% | 6,20 | |
| | | | | | | | | | | | Šatna | 1P27 | 100% | 16,90 | |
| | | | | | | | | | | | Kancelář | 3P12 | 100% | 21,90 | |
| | | | | | | | | | | | Kancelář | 3P13 | 100% | 21,90 | |
| NP | 316 | I | 131 | 853 | | 731285 | Praha | 3360 | IC5000117463 | Vysočany | Praha-Libeň, Výpravní budova, čp 316 | Sklad | 0P14 | 100% | 7,60 |
| | | | | | | | | | | | | Sklad | 0P15 | 100% | 18,00 |
| | | | | | | | | | | | | Kancelář | 0P16 | 100% | 18,00 |
| | | | | | | | | | | | | Chodba | 0P17 | 100% | 4,80 |
| | | | | | | | | | | | | Úklidová místn | 0P18 | 100% | 2,60 |
| | | | | | | | | | | | | Sklad | 0P19 | 100% | 22,40 |
| | | | | | | | | | | | | Sklad | 0P23 | 100% | 54,20 |
| | | | | | | | | | | | | WC | 0P26 | 100% | 1,40 |
| | | | | | | | | | | | | Umývárna | 0P27 | 100% | 1,80 |
| | | | | | | | | | | | | Schodiště | 1P01 | 100% | 11,20 |
| | | | | | | | | | | | | Chodba | 1P02 | 100% | 81,20 |
| | | | | | | | | | | | | Kancelář | 1P03 | 100% | 36,20 |
| | | | | | | | | | | | | Kancelář | 1P04 | 100% | 23,90 |
| | | | | | | | | | | | | Kancelář | 1P05 | 100% | 12,10 |
| | | | | | | | | | | | | Kancelář | 1P06 | 100% | 22,00 |
| | | | | | | | | | | | | Sklad | 1P07 | 100% | 14,40 |
| | | | | | | | | | | | | Kancelář | 1P08 | 100% | 35,20 |
| | | | | | | | | | | | | Kancelář | 1P48 | 100% | 14,80 |
| | | | | | | | | | | | | Kuchyň | 1P49 | 100% | 8,50 |
| | | | | | | | | | | | | WC muži | 1P52 | 100% | 13,60 |
| | | | | | | | | | | | | WC ženy | 1P53 | 100% | 12,50 |
| | | | | | | | | | | | | Předsíň | 1P54 | 100% | 5,10 |
| | | | | | | | | | | | | Předsíň | 1P55 | 100% | 4,30 |
| | | | | | | | | | | | | Kancelář | 1P56 | 100% | 35,20 |
| | | | | | | | | | | | | Šatna | 1P57 | 100% | 9,77 |
| | | | | | | | | | | | | Pokladna | 1P58 | 100% | 16,15 |
| | | | | | | | | | | | | Úklidová m | 1P59 | 100% | 10,39 |
| | | | | | | | | | | | | Předsíň | 1P61 | 100% | 51,60 |
| | | | | | | | | | | | | Kulturní m | 1P62 | 100% | 131,14 |
| | | | | | | | | | | | | Schodiště | 2P01 | 100% | 16,80 |
| | | | | | | | | | | | | Chodba | 2P02 | 100% | 79,25 |
| | | | | | | | | | | | | Úklidová m | 2P03 | 100% | 10,39 |
| | | | | | | | | | | | | Sklad | 2P04 | 100% | 13,43 |
| | | | | | | | | | | | | Kancelář | 2P05 | 100% | 21,87 |
| | | | | | | | | | | | | Kancelář | 2P06 | 100% | 14,37 |
| | | | | | | | | | | | | Kancelář | 2P07 | 100% | 21,87 |
| | | | | | | | | | | | | Kancelář | 2P08 | 100% | 35,97 |

| | | | | | | | | | | | | | | | |
|----|-----|---|------|------|---|--------|---------------------|-------|--------------|---------------------|--|-------------|-------|------|------|
| | | | | | | | | | | | | Kancelář | 2P09 | 100% | 36,8 |
| | | | | | | | | | | | | Sklad | 2P52 | 100% | 32,4 |
| | | | | | | | | | | | | Předsíň | 2P54 | 100% | 8,0 |
| | | | | | | | | | | | | WC muži | 2P55 | 100% | 8,6 |
| | | | | | | | | | | | | Předsíň | 2P56 | 100% | 7,2 |
| | | | | | | | | | | | | WC ženy | 2P57 | 100% | 73,0 |
| | | | | | | | | | | | | Kancelář | 2P58 | 100% | 23,9 |
| | | | | | | | | | | | | Kancelář | 2P59 | 100% | 14,4 |
| NP | | 1 | 135 | 4029 | 1 | 730891 | Praha | 7327 | IC5000117482 | Vysočany | Praha-Libeň, Provozní budova, 2.obj.č.23, nyní st.1 | Kancelář | 0P06 | 100% | 25,4 |
| NP | 43 | 2 | 279 | 42 | | 703567 | Neratovice | 4228 | IC5000117629 | Neratovice | Neratovice, Výpravní budova, č.p.43 | Chodba | 0P06 | 100% | 6,6 |
| | | | | | | | | | | | | enní místn | 0P07 | 100% | 22,4 |
| | | | | | | | | | | | | enní místn | 0P08 | 100% | 32,5 |
| | | | | | | | | | | | | Chodba | 0P09 | 100% | 3,5 |
| | | | | | | | | | | | | WC | 0P11 | 100% | 2,5 |
| | | | | | | | | | | | | Sprchy | 0P12 | 100% | 1,7 |
| | | | | | | | | | | | | Umývárna | 0P13 | 100% | 10,9 |
| | | | | | | | | | | | | Šatna | 1P09 | 100% | 13,0 |
| | | | | | | | | | | | | Šatna | 1P12 | 100% | 19,5 |
| | | | | | | | | | | | | Kancelář | 1P13 | 100% | 33,4 |
| | | | | | | | | | | | | Učebna | 1P15 | 100% | 31,3 |
| | | | | | | | | | | | | edací mistr | 1P16 | 100% | 30,7 |
| | | | | | | | | | | | | Kancelář | 1P17 | 100% | 35,4 |
| | | | | | | | | | | | | Pokladna | 1P18 | 100% | 19,7 |
| | | | | | | | | | | | | Sklad | 1P22 | 100% | 7,4 |
| NP | | 2 | 297 | 492 | | 672718 | Kralupy nad Vltavou | 66 | IC5000117683 | Kralupy nad Vltavou | Kralupy nad Vltavou, Výpravní budova, nová | Ostatní | 1P34 | 100% | 15,0 |
| | | | | | | | | | | | | Umývárna | 2P21 | 100% | 6,4 |
| | | | | | | | | | | | | WC muži | 2P21A | 100% | 8,5 |
| | | | | | | | | | | | | Ostatní | 2P23 | 100% | 13,8 |
| | | | | | | | | | | | | Šatna | 2P38 | 100% | 10,1 |
| | | | | | | | | | | | | Kancelář | 2P39 | 100% | 23,4 |
| | | | | | | | | | | | | Kancelář | 2P41 | 100% | 24,5 |
| | | | | | | | | | | | | Kancelář | 2P42 | 100% | 13,2 |
| NP | 251 | 2 | 723 | 3813 | 1 | 665126 | Kladno | 30369 | IC5000140394 | Kročehlavy | Kladno, Výpravní budova | Učebna | 1P21 | 100% | 17,0 |
| NP | 79 | 2 | 1010 | 106 | | 757381 | Středokluky | 595 | IC5000140486 | Středokluky | Středokluky, Výpravní budova | Kancelář | 0P06 | 100% | 12,0 |
| | | | | | | | | | | | | WC ženy | 0P11 | 100% | 4,0 |
| NP | | 2 | 839 | 1780 | | 665169 | Dubí u Kladna | 31487 | IC5000140498 | Dubí u Kladna | Kladno-Dubí, Sklad, zboží | Kancelář | 0P01 | 100% | 31,0 |
| | | | | | | | | | | | | Kancelář | 0P02 | 100% | 19,0 |
| | | | | | | | | | | | | Kancelář | 0P03 | 100% | 20,0 |
| | | | | | | | | | | | | Šatna | 0P04 | 100% | 19,0 |
| | | | | | | | | | | | | Chodba | 0P05 | 100% | 10,0 |
| | | | | | | | | | | | | WC | 0P06 | 100% | 2,0 |
| | | | | | | | | | | | | WC | 0P07 | 100% | 2,0 |
| | | | | | | | | | | | | Koupelna | 0P08 | 100% | 3,0 |
| | | | | | | | | | | | | Chodba | 0P09 | 100% | 7,6 |
| | | | | | | | | | | | | Sprchy | 0P11 | 100% | 12,0 |
| | | | | | | | | | | | | Šatna | 0P15 | 100% | 51,0 |
| | | | | | | | | | | | | Chodba | 0P17 | 100% | 10,0 |
| | | | | | | | | | | | | Chodba | 0P18 | 100% | 5,0 |
| NP | | 2 | 893 | 3815 | | 665126 | Kročehlavy | 30369 | IC5000140535 | Kročehlavy | Kladno, Závodní jídelna, a soc. zař. žst | Šatna | 2P05 | 100% | 17,0 |
| NP | 328 | 2 | 731 | 579 | | 730081 | Rakovník | 8235 | IC5000140798 | Rakovník | Rakovník, Sklad, výprav. zboží | Kancelář | 0P01 | 100% | 9,0 |
| | | | | | | | | | | | | Kancelář | 0P02 | 100% | 11,0 |
| | | | | | | | | | | | | Kancelář | 0P03 | 100% | 14,0 |
| | | | | | | | | | | | | Kancelář | 0P04 | 100% | 16,0 |
| | | | | | | | | | | | | Kancelář | 0P05 | 100% | 7,0 |
| | | | | | | | | | | | | Kancelář | 0P06 | 100% | 16,0 |
| | | | | | | | | | | | | Kancelář | 0P07 | 100% | 4,0 |
| | | | | | | | | | | | | WC | 0P08 | 100% | 1,0 |
| | | | | | | | | | | | | Chodba | 0P09 | 100% | 6,0 |
| | | | | | | | | | | | | Schodiště | 1P01 | 100% | 10,0 |
| | | | | | | | | | | | | Chodba | 1P02 | 100% | 9,0 |
| | | | | | | | | | | | | Chodba | 1P03 | 100% | 9,0 |

| | | | | | | | | | | | | | | |
|----|-----|---|-----|------|--------|-----------------|------|--------------|---------------|--------------------------------------|-------------|------|-------|--------|
| | | | | | | | | | | Kancelář | 1P04 | 100% | 26,00 | |
| | | | | | | | | | | Kancelář | 1P05 | 100% | 17,60 | |
| | | | | | | | | | | Kancelář | 1P06 | 100% | 25,00 | |
| NP | | 2 | 748 | 5066 | 739081 | Rakovník | 8235 | IC5000140809 | Rakovník | Rakovník, Útulek, posun | Zádvěří | 0P01 | 100% | 4,00 |
| | | | | | | | | | | | Chodba | 0P02 | 100% | 4,00 |
| | | | | | | | | | | | enní místn | 0P03 | 100% | 20,00 |
| | | | | | | | | | | | Šatna | 0P04 | 100% | 20,00 |
| | | | | | | | | | | | WC | 0P05 | 100% | 2,00 |
| NP | 262 | 1 | 187 | 2186 | 773425 | Praha | 2438 | IC5000145045 | Uhřetěves | Praha-Uhřetěves, Výpravní budova | Sprchy | 0P13 | 100% | 6,60 |
| | | | | | | | | | | | WC | 0P14 | 100% | 3,15 |
| | | | | | | | | | | | Kuchyň | 0P15 | 100% | 27,00 |
| | | | | | | | | | | | Šatna | 0P16 | 100% | 13,90 |
| | | | | | | | | | | | Šatna | 0P17 | 100% | 14,30 |
| | | | | | | | | | | | Kancelář | 0P18 | 100% | 19,30 |
| | | | | | | | | | | | Ostatní | 0P19 | 100% | 4,14 |
| | | | | | | | | | | | Kancelář | 0P21 | 100% | 13,46 |
| | | | | | | | | | | | Kancelář | 1P08 | 100% | 19,40 |
| | | | | | | | | | | | Kancelář | 1P09 | 100% | 14,04 |
| | | | | | | | | | | | edací mistr | 1P11 | 100% | 30,04 |
| NP | 165 | 1 | 190 | 2729 | 732052 | Praha | 225 | IC5000145052 | Hostivař | Praha-Hostivař, Provozní budova | Kancelář | 0P11 | 100% | 27,00 |
| NP | | 1 | 192 | 2512 | 732257 | Praha | 5445 | IC5000145084 | Vršovice | Praha-Vršovice, Sklad, výpr zboží | WC muži | 0P04 | 100% | 1,20 |
| | | | | | | | | | | | Kancelář | 0P07 | 100% | 25,00 |
| | | | | | | | | | | | Kancelář | 0P08 | 100% | 22,00 |
| | | | | | | | | | | | Kancelář | 0P09 | 100% | 25,00 |
| | | | | | | | | | | | Kancelář | 0P14 | 100% | 19,70 |
| | | | | | | | | | | | Pokladna | 0P15 | 100% | 21,50 |
| NP | 43 | 1 | 238 | 2652 | 738620 | Praha | 617 | IC5000145254 | Radotín | Praha-Radotín, Výpravní budova | Kancelář | 0P01 | 100% | 10,88 |
| | | | | | | | | | | | Kancelář | 0P17 | 100% | 15,36 |
| | | | | | | | | | | | Kancelář | 1P24 | 100% | 28,80 |
| NP | | 2 | 455 | 3494 | 602191 | Benešov u Prahy | 6313 | IC5000145465 | | Benešov u Prahy, Sklad, zboží a kanc | Kancelář | 0P03 | 100% | 13,360 |
| | | | | | | | | | | | Kancelář | 0P04 | 100% | 16,510 |
| | | | | | | | | | | | Kancelář | 0P18 | 100% | 26,630 |
| | | | | | | | | | | | Kancelář | 0P19 | 100% | 13,12 |
| NP | | 2 | 457 | 3493 | 602191 | Benešov u Prahy | 6313 | IC5000145466 | Benešov u Pra | Benešov u Prahy, Útulek, posun | Předsíň | 0P01 | 100% | 2,28 |
| | | | | | | | | | | | WC muži | 0P02 | 100% | 1,58 |
| | | | | | | | | | | | Umyvárna | 0P03 | 100% | 10,43 |
| | | | | | | | | | | | Šatna | 0P04 | 100% | 31,35 |
| | | | | | | | | | | | Kuchyň | 0P05 | 100% | 17,67 |
| | | | | | | | | | | | Šatna | 0P06 | 100% | 24,46 |
| NP | 274 | 2 | 446 | 517 | 708062 | Nučice | 945 | IC5000145710 | Nučice u Rud | Nučice, Výpravní budova | Kancelář | 0P03 | 100% | 15,00 |
| | | | | | | | | | | | Kancelář | 0P04 | 100% | 13,50 |
| | | | | | | | | | | | Kancelář | 0P07 | 100% | 14,43 |
| | | | | | | | | | | | Předsíň | 0P08 | 100% | 6,75 |
| | | | | | | | | | | | Sprchy | 0P09 | 100% | 1,20 |
| NP | | 2 | 486 | 103 | 603091 | Beroun | 229 | IC5000145743 | Jarov u Berou | Beroun, Výpravní budova, s n | Chodba | 0P02 | 100% | 5,26 |
| | | | | | | | | | | | Kancelář | 0P03 | 100% | 23,49 |
| | | | | | | | | | | | Kancelář | 0P14 | 100% | 20,40 |
| | | | | | | | | | | | Šatna | 0P15 | 100% | 8,50 |
| | | | | | | | | | | | Kancelář | 0P17 | 100% | 20,10 |
| | | | | | | | | | | | Šatna | 0P18 | 100% | 8,60 |
| | | | | | | | | | | | Šatna | 0P21 | 100% | 44,10 |
| | | | | | | | | | | | Koupelna | 0P22 | 100% | 10,90 |
| | | | | | | | | | | | WC | 0P23 | 100% | 1,40 |
| | | | | | | | | | | | WC | 0P24 | 100% | 1,40 |
| | | | | | | | | | | | Kancelář | 1P08 | 100% | 10,00 |
| | | | | | | | | | | | Kancelář | 1P11 | 100% | 11,00 |
| | | | | | | | | | | | Kancelář | 1P12 | 100% | 10,70 |
| | | | | | | | | | | | Kancelář | 1P14 | 100% | 24,00 |
| | | | | | | | | | | | Šatna | 1P17 | 100% | 13,50 |
| | | | | | | | | | | | Chodba | 1P18 | 100% | 2,00 |
| | | | | | | | | | | | Umyvárna | 1P19 | 100% | 12,10 |
| | | | | | | | | | | | WC | 1P21 | 100% | 1,40 |
| | | | | | | | | | | | WC | 1P22 | 100% | 1,40 |

| | | | | | | | | | | | | | | | |
|----|-----|---|-----|------|--------|---------|----------|--------------|--------------|-------------------------|---|-------|------|--------|-------|
| | | | | | | | | | | | Chodba | 2P01 | 100% | 8,00 | |
| | | | | | | | | | | | WC | 2P02 | 100% | 2,00 | |
| | | | | | | | | | | | Kancelář | 2P03 | 100% | 32,20 | |
| | | | | | | | | | | | Šatna | 2P04 | 100% | 4,20 | |
| NP | 129 | 2 | 514 | 4144 | 602868 | Beroun | 229 | IC5000145773 | Beroun | Beroun, Výpravní budova | Sušárna | 0P89 | 100% | 13,00 | |
| | | | | | | | | | | | Šatna | 0P91 | 100% | 26,50 | |
| | | | | | | | | | | | Ostální | 0P92 | 100% | 13,00 | |
| | | | | | | | | | | | Ostální | 0P93 | 100% | 13,00 | |
| | | | | | | | | | | | vozní mistr | 1P22 | 100% | 28,50 | |
| | | | | | | | | | | | Kancelář | 1P23 | 100% | 11,50 | |
| | | | | | | | | | | | Předsín | 1P24 | 100% | 7,00 | |
| | | | | | | | | | | | Předsín | 1P25 | 100% | 11,50 | |
| | | | | | | | | | | | Kancelář | 1P26 | 100% | 8,00 | |
| | | | | | | | | | | | Kancelář | 1P27 | 100% | 19,00 | |
| | | | | | | | | | | | Kancelář | 1P28 | 100% | 19,00 | |
| | | | | | | | | | | | Kancelář | 1P29 | 100% | 19,00 | |
| | | | | | | | | | | | Předsín | 1P31 | 100% | 3,00 | |
| | | | | | | | | | | | WC ženy | 1P32 | 100% | 6,50 | |
| | | | | | | | | | | | Archiv | 1P19 | 100% | 10,00 | |
| | | | | | | | | | | | Kancelář | 1P21 | 100% | 18,00 | |
| | | | | | | | | | | | Chodba | 1P02A | 100% | 30,00 | |
| | | | | | | | | | | | Šatna | S106 | 100% | 34,000 | |
| NP | | 2 | 667 | 2763 | 735426 | Příbram | 9156 | IC5000197699 | Příbram | Příbram, Sklad | Kancelář | 0P01 | 100% | 39,00 | |
| | | | | | | | | | | | Kancelář | 0P17 | 100% | 17,50 | |
| | | | | | | | | | | | Kancelář | 0P18 | 100% | 20,00 | |
| | | | | | | | | | | | Kancelář | 0P19 | 100% | 17,50 | |
| NP | | 1 | 214 | 2502 | 1 | 732257 | Vršovice | 5445 | IC5000145135 | Praha | Praha-Vršovice, Výpravní budova, dopr. pavilon | Šatna | 1P01 | 100% | 36,90 |
| | | | | | | | | | | | Šatna | 1P08 | 100% | 15,90 | |
| | | | | | | | | | | | Předsín | 1P09 | 100% | 15,90 | |
| | | | | | | | | | | | WC muži | 1P11 | 100% | 11,00 | |

Splátkový kalendář na rok 2009 k dodatku č.1. nájemní smlouvy č. 2957004809

Nájemce:

ČD Cargo, a.s.

se sídlem Praha 7 Holešovice, Jankovcova 1569/2c, PSČ 170 00

zapsána v Obchodním rejstříku u Městského soudu v Praze, oddíl B, vložka 12844

IČ: 28196678 DIČ: CZ28196678

zastoupen

Bankovní

Organizační složka: ČD Cargo, a.s., Provozní jednotka Praha, Českomoravská 316/24, 190 00 Praha 9

Pronajímatel:

České dráhy, a.s.

se sídlem Praha 1, Nábřeží L. Svobody 1222, PSČ 110 15

zapsána v Obchodním rejstříku u Městského soudu v Praze, oddíl B, vložka 8039

IČ: 709942

zastoupená

Bankovní s

Organizační složka: České dráhy, a.s., Regionální správa majetku Praha

Ukrainská 304, 101 00 Praha 10

| Termín úhrady | Základ daně | Částka DPH | Celkem k úhradě | Za období |
|---------------|-------------|------------|-----------------|-----------|
|---------------|-------------|------------|-----------------|-----------|

| | | | | |
|--|--|--|--|--|
| | | | | |
|--|--|--|--|--|