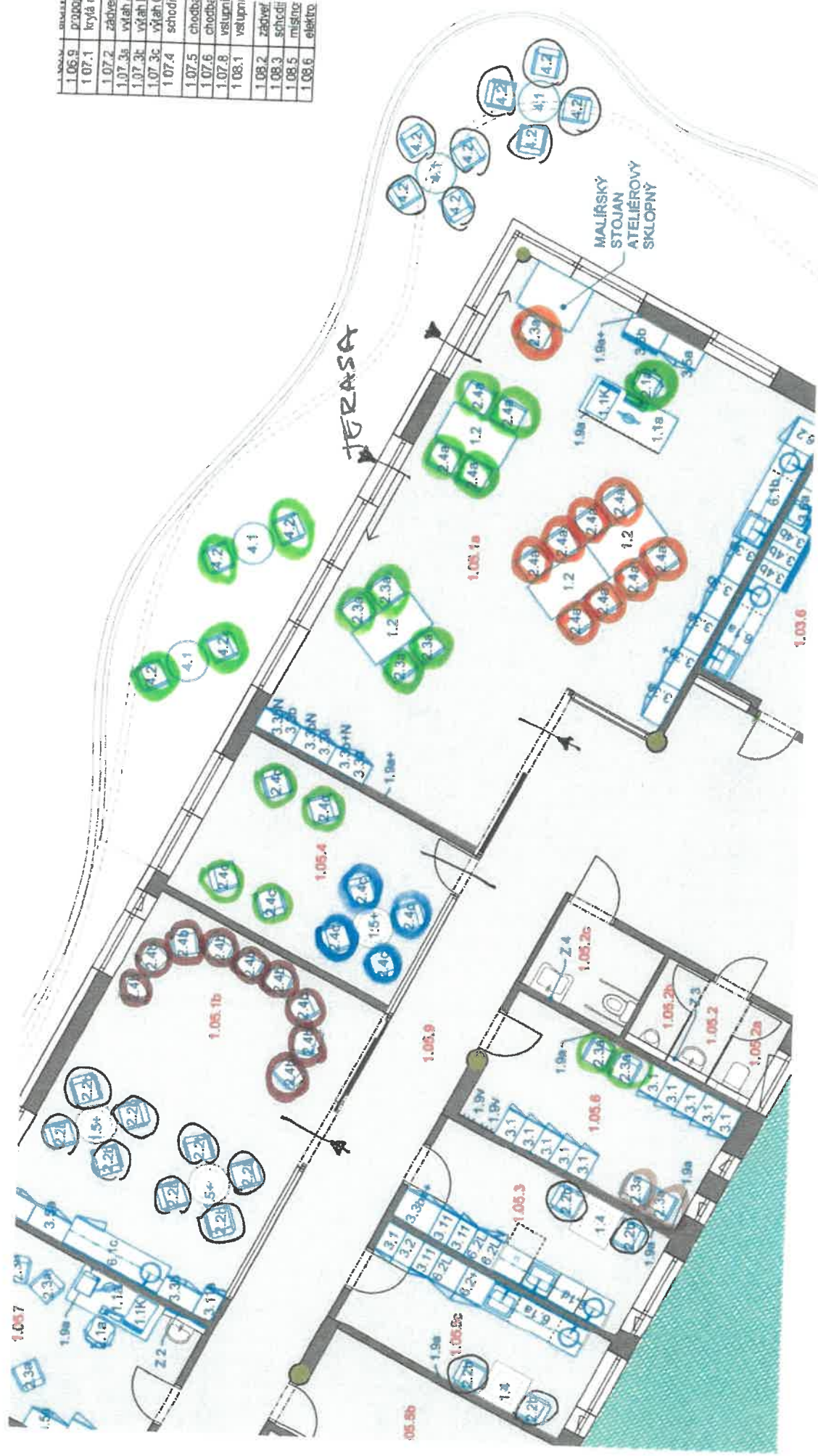
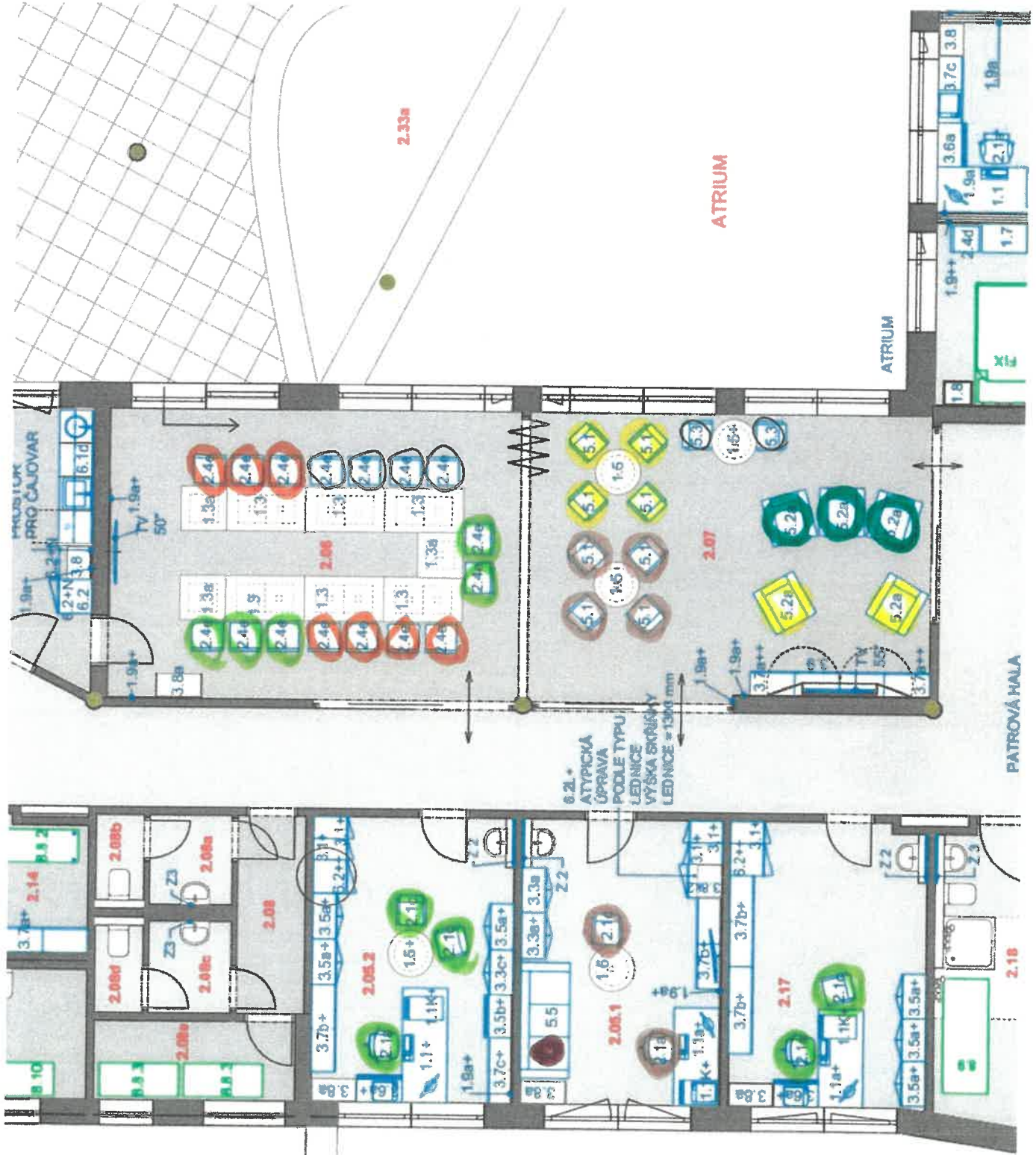


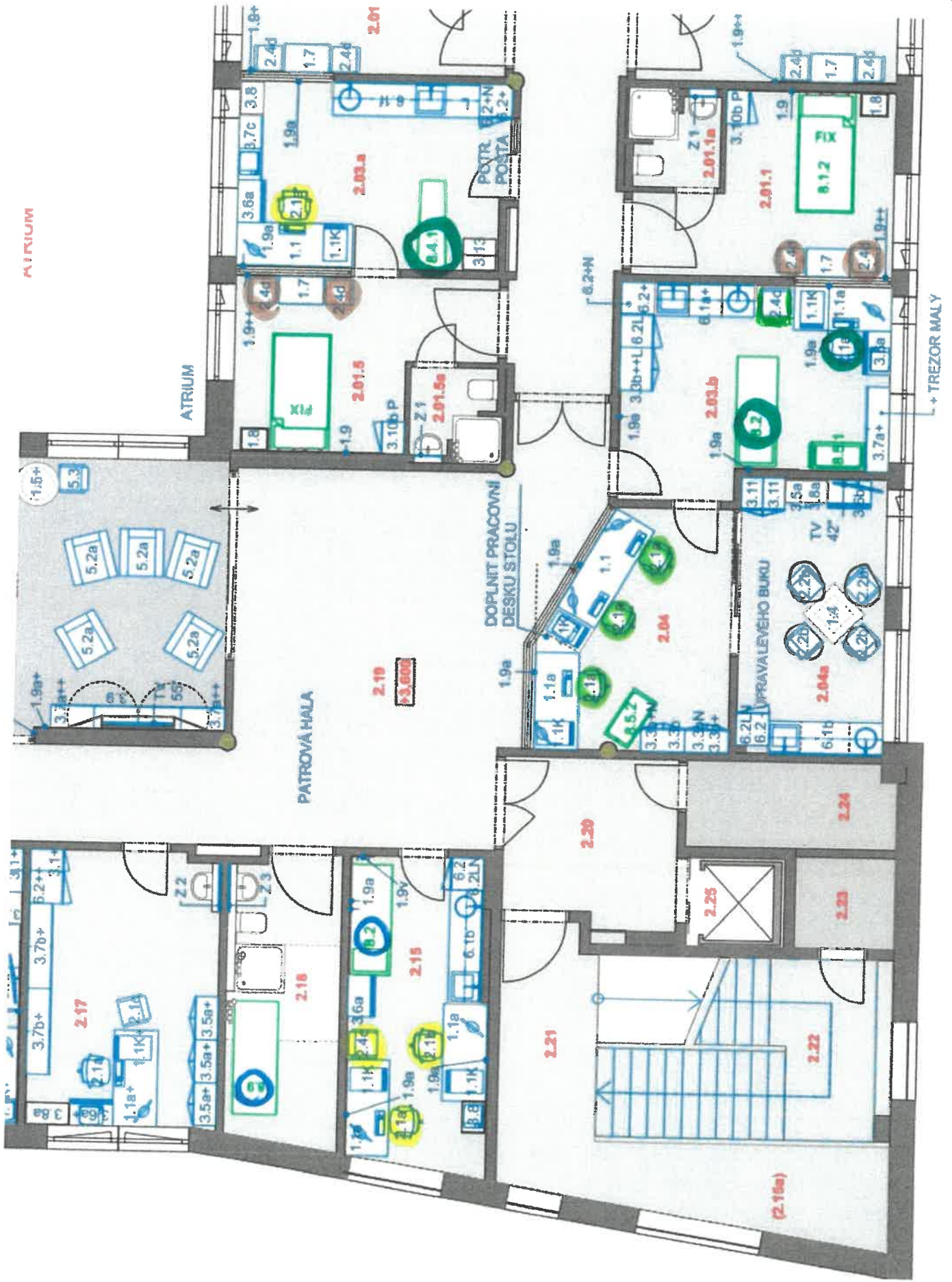
6.6.1.2.2.2

ČÍSLO	POPIS
1.06.9	průhled
1.07.1	krylá m
1.07.2	zadveř
1.07.3a	vlah A
1.07.3c	vlah E
1.07.3c	vlah C
1.07.4	schodi
1.07.5	chodba
1.07.6	chodba
1.07.8	schodi
1.08.1	vstupní
1.08.2	zadveř
1.08.3	schodi
1.08.5	místec
1.08.6	elektro







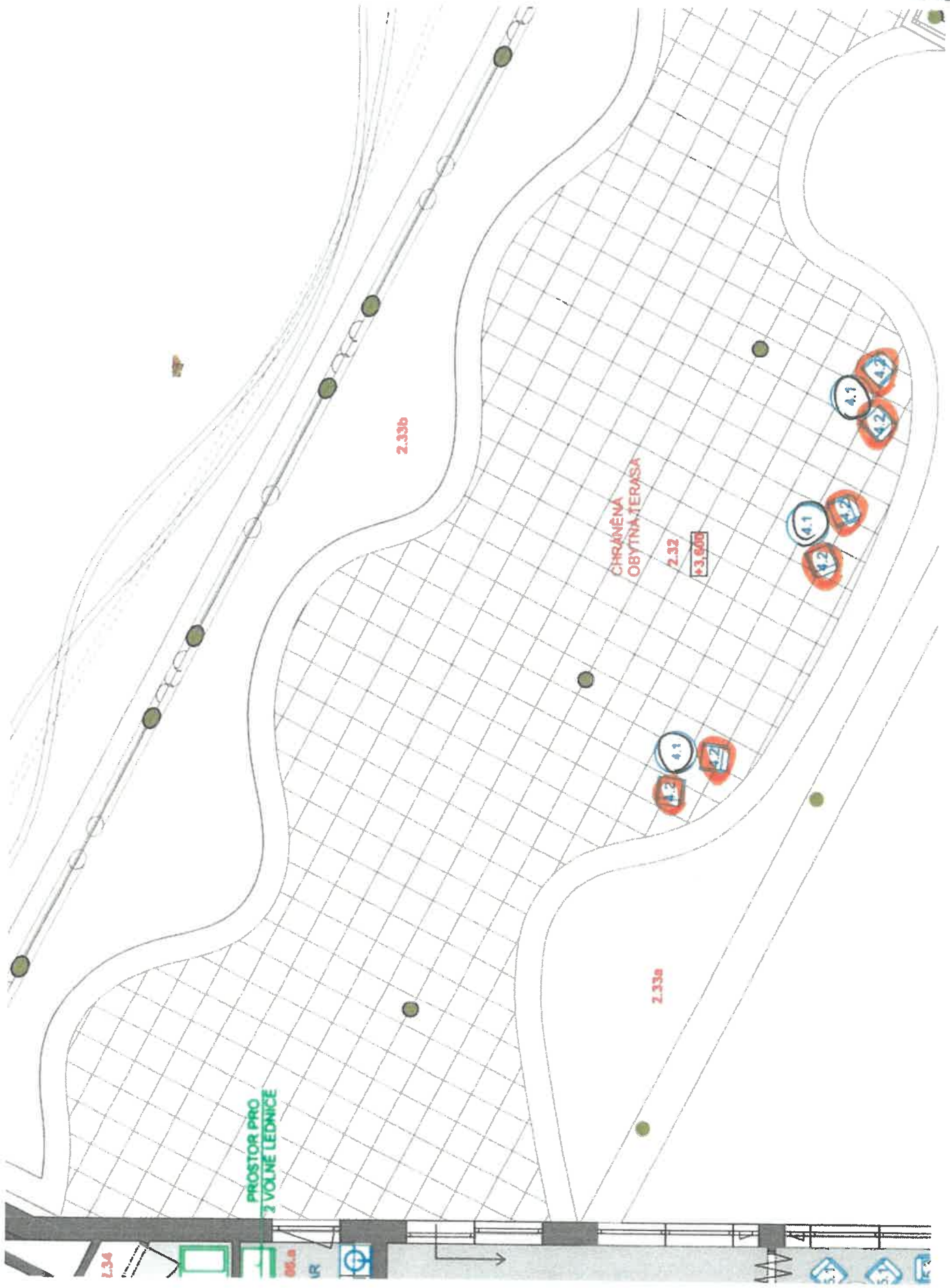


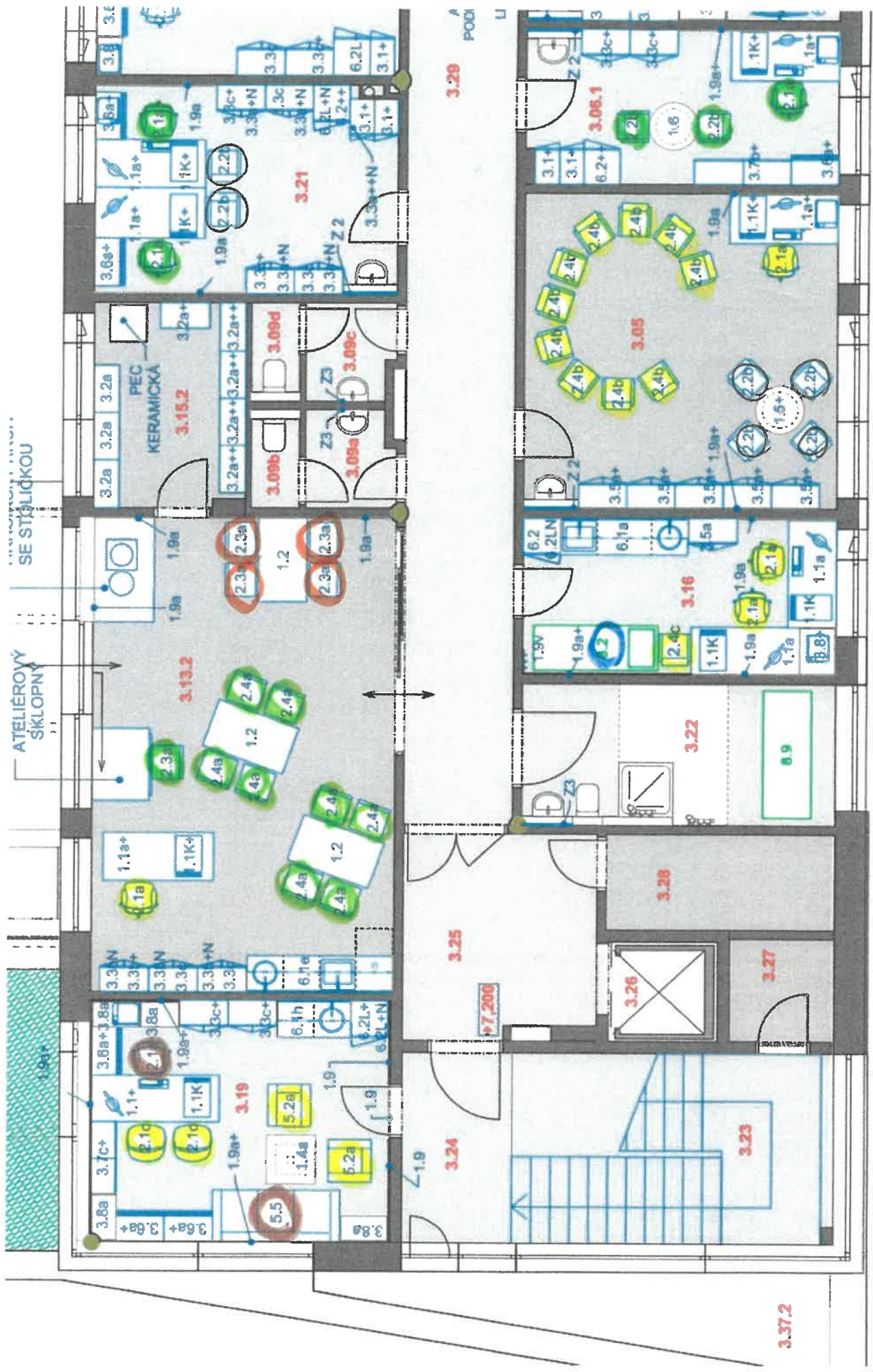




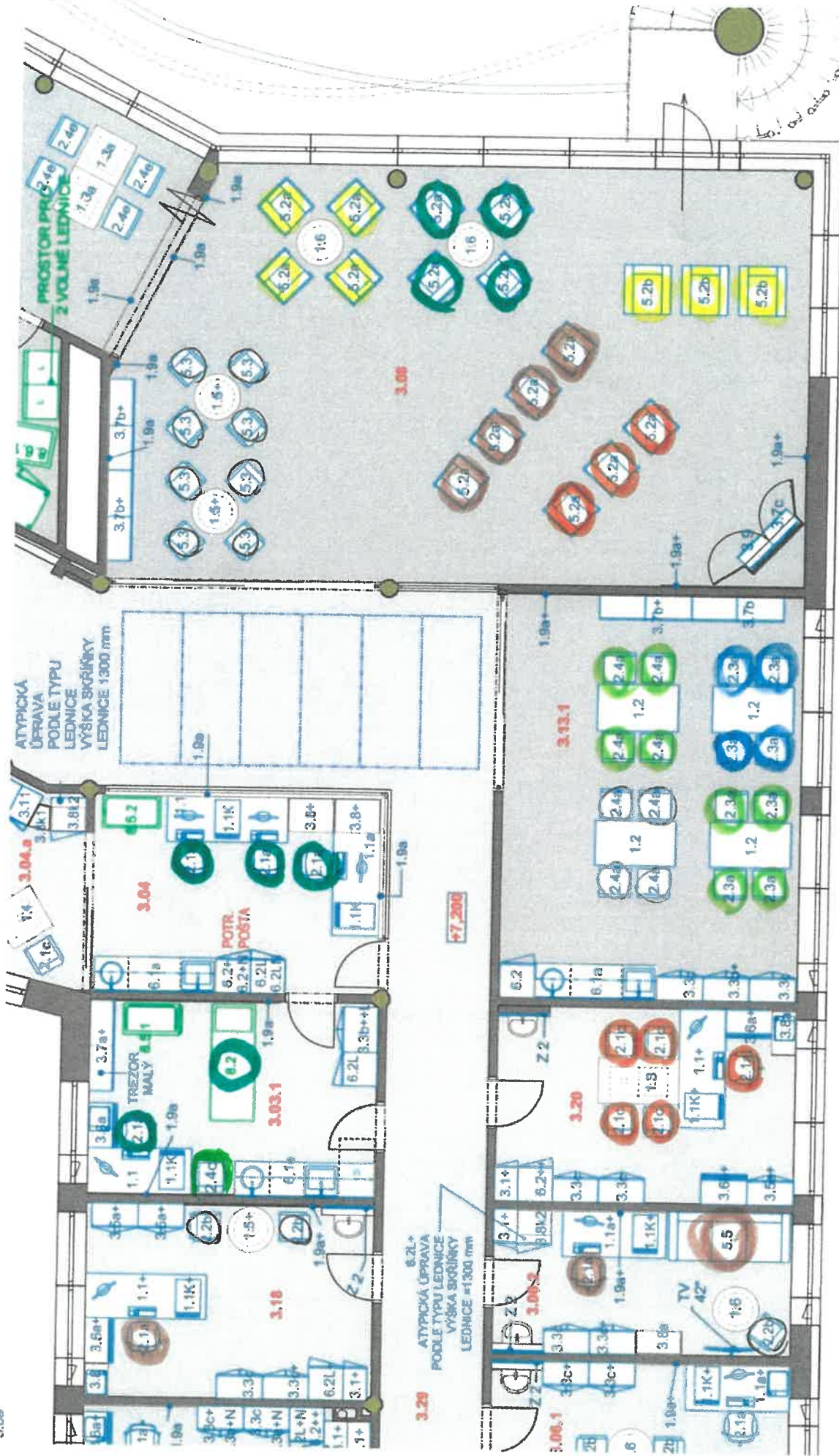
MALÍRSKÝ  
STOJAN  
ATELÉROVÝ  
SKLOPNÝ

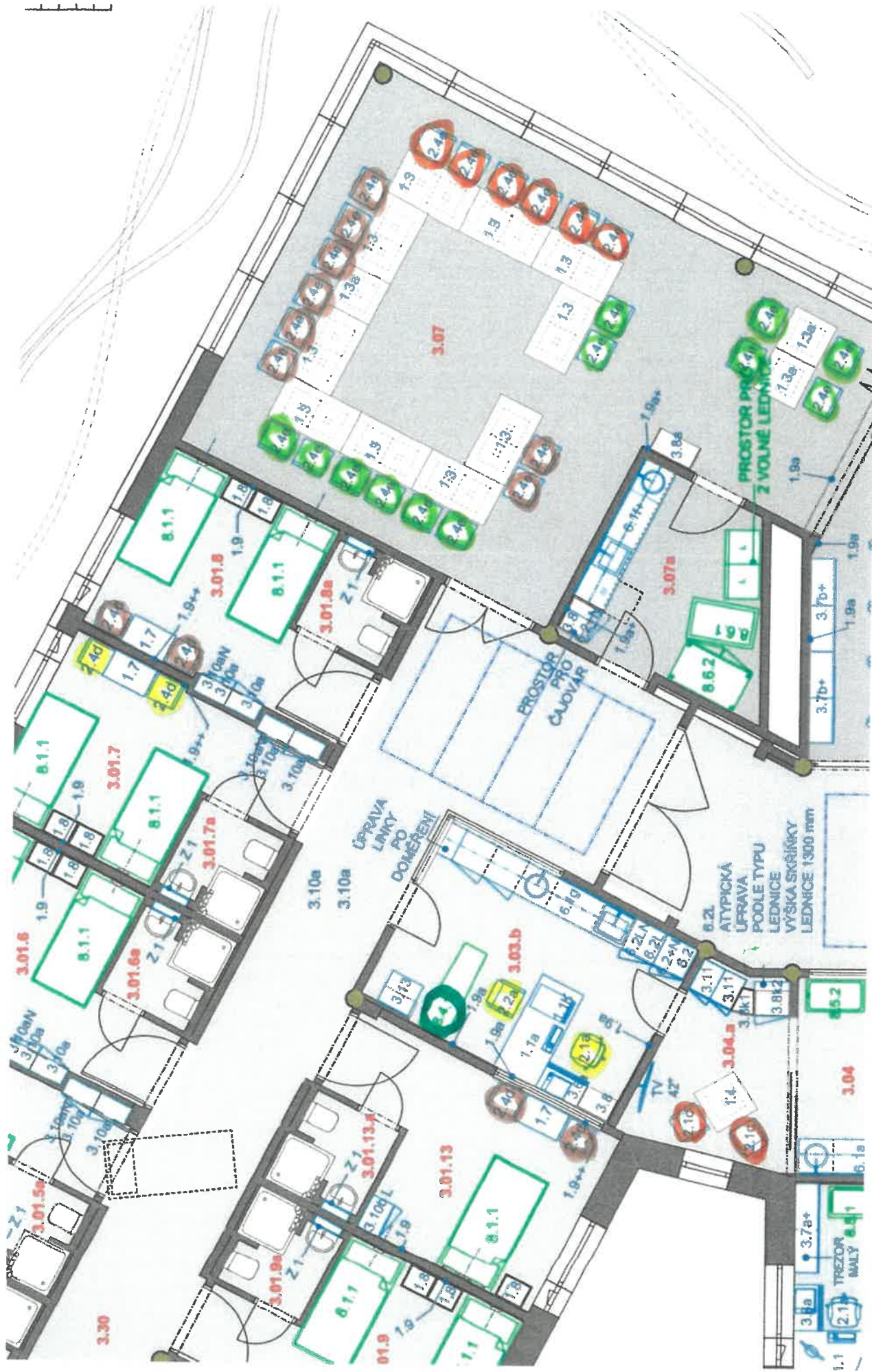
to be! and outside 2.3





3.1







3.4

