

YMC CHIRAL Immobilised Polysaccharide derivatives series

Features

- Immobilised polysaccharide chiral selector
- Applicable for normal and reversed phase modes
- Highly robust, also suitable for SFC/SMB
- Remarkably reduced background signal
- HPLC columns and preparative grade bulk media with particle sizes of 5, 10 and 20 μm available
- Extremely attractive pricing

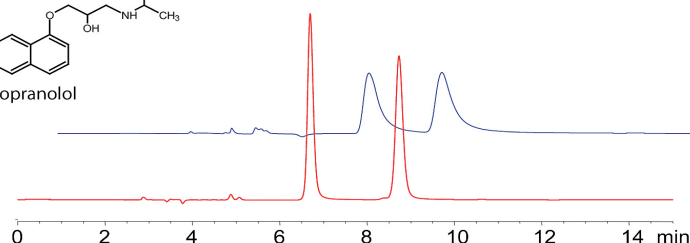
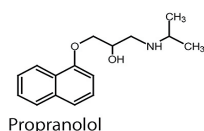
Introduction

YMC CHIRAL polysaccharides derivatives are a series of chiral separation columns / packing materials with high stereoselectivity. They are suitable for separations of wide range of chiral compounds, cis-trans isomers and geometric isomers. A range of particle sizes and column dimensions offer outstanding cost effectiveness from analytical to preparative separations.

Immobilised Type

Now, immobilised versions of YMC CHIRAL polysaccharides are announced. They can be used either in normal phase or in reversed phase modes. YMC CHIRAL Cellulose-SB and Amylose-SA are available in HPLC columns and in preparative grades, in large (multi kg) quantities.

Application Data



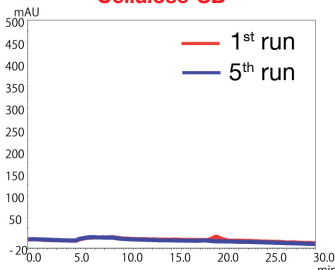
Column: 5 μm , 250 x 4.6 mm ID
Eluent: *n*-hexane / IPA / DEA (80/20/0.1)
Flow rate: 1.0 ml/min
Temperature: 25 $^{\circ}\text{C}$
Detection: 230 nm
Injection: 10 μl (0.1 mg/ml)

CHIRALPAK IB

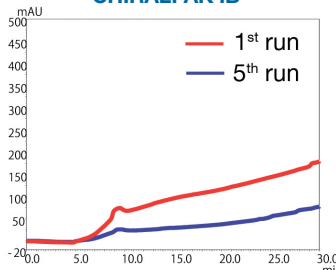
YMC CHIRAL Cellulose-SB

YMC CHIRAL polysaccharides derivatives provide excellent peak shapes for ionic and metal coordinating compounds.

Cellulose-SB



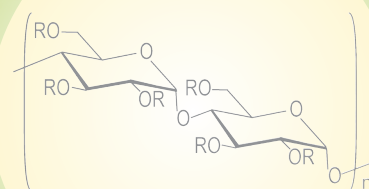
CHIRALPAK IB



Gradient test
Column: 5 μm , 250 x 4.6 mm ID
Eluent: A) *n*-hexane / B) ethanol
2-80% B (0-30 min),
80-2% B (30-30.1 min),
2% B (30.1-60 min)
Flow rate: 1.0 ml/min
Temperature: 25 $^{\circ}\text{C}$
Detection: UV at 230 nm

YMC CHIRAL Cellulose-SB shows an extremely low background signal under the typical gradient condition.

YMC CHIRAL Immobilised Polysaccharide derivatives series



Amylose derivative

Specifications

**Now
available**

**Coming
soon**

Item	YMC CHIRAL Cellulose-SB	YMC CHIRAL Amylose-SA
Particle size	5, 10, 20 μ m	
Chiral selector	Cellulose tris (3,5-dimethylphenylcarbamate)	Amylose tris (3,5-dimethylphenylcarbamate)
Type	Immobilised type	
Separation mode	Normal Phase / Reversed Phase	
Shipping solvent	n-hexane/2-propanol (90/10)	
Temp. range	0-40 °C (pH 7- 9 max. 25 °C)	
Usable pH-range	2.0 - 9.0	
Pressure limit	30 MPa (4350 psi)	
Recommended flow rate	4.6 mm ID: 0.5 - 1.0 ml/min (Max. flow rate: 3.0 ml/min) 10 mm ID: 2.5 - 5.0 ml/min (Max. flow rate: 15 ml/min)	

Product Line-up

Product name	Particle size [μ m]	Chiral selector	Type	Competitive product
YMCCHIRAL Cellulose-SB	5 10 20	Cellulose tris (3,5-dimethylphenylcarbamate)	Immobilised	CHIRALPAK® IB
YMC CHIRAL Amylose-SA		Amylose tris (3,5-dimethylphenylcarbamate)	Immobilised	CHIRALPAK® IA

CHIRALPAK is a registered trademark of Daicel Corporation.

Ordering information

Initial Product Line-up

YMC CHIRAL Cellulose-SB

Phase dimension	Column ID [mm]	Column length [mm]		Guard cartridges/columns*
		150	250	
5 μ m	2	KSB99S05-1502WT	KSB99S05-2502WT	KSB99S05-0102CC (10 mm length, pack of 2)
	4.6	KSB99S05-1546WT	KSB99S05-2546WT	KSB99S05-G304CC (23 mm length, pack of 3)
	10	—	KSB99S05-2510WT	KSB99S05-0310WTG (30 mm length, 1 unit)
	20	—	KSB99S05-2520WX	KSB99S05-0120CC (10 mm length, pack of 2)
	30	—	KSB99S05-2530WX	KSB99S05-0130CC (10 mm length, pack of 2)

Follow-up Product Line-up

YMC CHIRAL Amylose-SA

Phase dimension	Column ID [mm]	Column length [mm]		Guard cartridges/columns*
		150	250	
5 μ m	2	KSA99S05-1502WT	KSA99S05-2502WT	KSA99S05-0102CC (10 mm length, pack of 2)
	4.6	KSA99S05-1546WT	KSA99S05-2546WT	KSA99S05-G304CC (23 mm length, pack of 3)
	10	—	KSA99S05-2510WT	KSA99S05-0310WTG (30 mm length, 1 unit)
	20	—	KSA99S05-2520WX	KSA99S05-0120CC (10 mm length, pack of 2)
	30	—	KSA99S05-2530WX	KSA99S05-0130CC (10 mm length, pack of 2)

*Guard cartridge holder required, part no. XPCCHSMW (2 mm ID)
XPCCHW (4 mm ID)
XPCCHSPW2 (20 mm ID)
XPCCHSPW3 (30 mm ID)
No holder required for 10 mm ID

YMC Co., Ltd.

YMC Karasuma-Gojo Bld. 284 Daigo-cho,
Karasuma Nishiiru Gojo-dori Shimogyo-ku,
Kyoto 600-8106 Japan
TEL. +81(0)75-342-4515, FAX +81(0)75-342-4550
www.ymc.co.jp

YMC Europe GmbH

Schöttmannshof 19
D-46539 Dinslaken
Germany
TEL. +49(0)2064/427-0, FAX +49(0)2064/427-222
www.ymc.de

YMC America, Inc.

941 Marcon Boulevard Suite 301
Allentown, PA18109 USA
TEL. +1-610-266-8650, FAX +1-610-266-8652
www.ymc-america.com

YMC India Ltd.
www.ymcindia.com

YMC Korea Co., Ltd.
www.ymckorea.com

YMC Co., Ltd. Shanghai Rep. Office
www.ymc.co.jp

YMC Taiwan Co., Ltd.
www.ymctaiwan.com

YMC Singapore Tradelinks Pte. Ltd.
www.ymc.sg