

Electronic Ticket Receipt

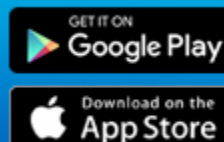
Rezervacni kod: **Z9AZLT**
Issue date: **19 JANUARY 17**
Issuing Airline: **LUFTHANSA**
Ticket: **220-1223584705**

[Check My Trip](#)
[Baggage](#)

Traveler **Kavan Ladislav Mr (ADT)** Agency **BUSINESS TRAVEL SOLUTIONS
SAMCOVA 1
110 00 PRAHA 1**

Telefon [REDACTED]
Email [REDACTED]
IATA **15210672**
Agent **8591**

Download CheckMyTrip
to *Travel Fearlessly* this winter



Itinerary

Od	Kam	Let	Class	Datum	Departure	Arrival	Resa (1)	NVB(2)	NVA(3)	Last check-in	Baggage (4)	Misto
Sunday 12 February 2017												
PRAGUE	FRANKFURT	LH1393	P	12Feb	10:45	11:55	Ok	12Feb	12Feb		2PC	03F
Terminal 2	Terminal 1					Fare Basis					PNCCZ4W	
Operated by		LUFTHANSA				Marketed by					LUFTHANSA	
Frequent flyer number		LH 992009625076121										
Equipment		Airbus Industrie A320-100/200							Duration		01:10 (Non Stop)	
Sunday 12 February 2017												
FRANKFURT	ORLANDO INT	LH0464	P	12Feb	13:40	18:00	Ok	12Feb	12Feb		2PC	82A
Terminal 1						Fare Basis					PNCCZ4W	
Operated by		LUFTHANSA				Marketed by					LUFTHANSA	
Frequent flyer number		LH 992009625076121										
Equipment		Boeing 747-400							Duration		10:20 (Non Stop)	
Friday 17 February 2017												
ORLANDO INT	FRANKFURT	LH0465	D	17Feb	20:20	10:55	Ok	17Feb	17Feb		2PC	86K
	Terminal 1					Fare Basis					DFFCZW	
Operated by		LUFTHANSA				Marketed by					LUFTHANSA	
Frequent flyer number		LH 992009625076121										
Equipment		Boeing 747-400				Arrival Day+1			Duration		08:35 (Non Stop)	
Saturday 18 February 2017												
FRANKFURT	PRAGUE	LH1396	D	18Feb	12:40	13:45	Ok	18Feb	18Feb		2PC	03A
Terminal 1	Terminal 2					Fare Basis					DFFCZW	
Operated by		LUFTHANSA				Marketed by					LUFTHANSA	
Frequent flyer number		LH 992009625076121										
Equipment		Airbus Industrie A320-100/200							Duration		01:05 (Non Stop)	

(1) Ok = confirmed (2)NVB= Not valid before (3)NVA= Not valid after(4) Each passenger can check in a specific amount of baggage at no extra cost as indicated above in the column baggage.

At check-in, you must show a photo ID.

Baggage Policy

PRGMCO

1st Checked Bag: Free of Charge UPTO70LB 32KG AND62LI 158LCMOR BICYCLE UP TO 70LB 32 KGOR SURFBOARD UPTO70LB 32KGOR WINDSURF EQUIP UPTO70LB 32KG

2nd Checked Bag: Free of Charge UPTO70LB 32KG AND62LI 158LCMOR BICYCLE UP TO 70LB 32 KGOR SURFBOARD UPTO70LB 32KGOR WINDSURF EQUIP UPTO70LB 32KG

MCOPRG

1st Checked Bag: Free of Charge UPTO70LB 32KG AND62LI 158LCMOR BICYCLE UP TO 70LB 32 KGOR SURFBOARD UPTO70LB 32KGOR WINDSURF EQUIP UPTO70LB 32KG

2nd Checked Bag: Free of Charge UPTO70LB 32KG AND62LI 158LCMOR BICYCLE UP TO 70LB 32 KGOR SURFBOARD UPTO70LB 32KGOR WINDSURF EQUIP UPTO70LB 32KG

CARRY-ON BAG:

PRGFRA: MAX	2PC	Free of Charge	CARRY8KG 18LB UPTO46LI 118LCM
FRAMCO: MAX	2PC	Free of Charge	CARRY8KG 18LB UPTO46LI 118LCM
MCOFRA: MAX	2PC	Free of Charge	CARRY8KG 18LB UPTO46LI 118LCM
FRAPRG: MAX	2PC	Free of Charge	CARRY8KG 18LB UPTO46LI 118LCM

LB = Weight In Pounds, KG = Weight In Kilos, LI = Linear Inches, LCM = Linear Centimeters, MAX = Maximum Allowed, PC = Number of Pieces

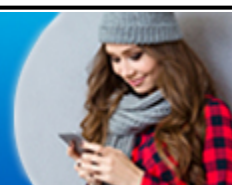
Baggage allowance and charges are provided for information only. Additional discounts may apply depending on advance purchase or Flyer-specific factors (e.g. Frequent flyer status, military, Credit card used for purchase, early purchase over the internet, etc.) Most carriers' e-tickets have expiration dates and conditions of use. Check the carrier's fare rules for more information.

Receipt

Name	: Kavan Ladislav Mr (ADT)
Ticket number	: 220 1223584705
Issuing Airline and datum	: LUFTHANSA 19Jan17
Restriction(s)/Endorsements	: NONREF/FL/CHG RESTRICTED CHECK FARE NOTE -BG LH

The fare that applies on the date of purchase is only valid for the entire itinerary and the specific travel dates mentioned on the ticket.

Download CheckMyTrip
to *Travel Fearlessly* this winter



FLIGHT(S) CALCULATED AVERAGE CO2 EMISSIONS IS 2240.97 KG/PERSON
SOURCE: ICAO CARBON EMISSIONS CALCULATOR
<http://www.icao.int/environmental-protection/CarbonOffset/Pages/default.aspx>

Our company wishes you a very pleasant trip.
This document establishes the creation of your electronic ticket(s) in our computer systems.
For further information, please contact us.

Carriage and other services provided by the carrier are subject to conditions of carriage, which are hereby incorporated by reference. These conditions may be obtained from the issuing carrier. The itinerary/receipt constitutes the passenger ticket for the purposes of article 3 of the Warsaw convention, except where the carrier delivers to the passenger another document complying with the requirements of article 3. Passengers on a journey involving an ultimate destination or a stop in a country other than the country of departure are advised that international treaties known as the montreal convention, or its predecessor, the warsaw convention, including its amendments (the warsaw convention system), may apply to the entire journey, including any portion thereof within a country. For such passengers, the applicable treaty, including special contracts of carriage embodied in any applicable tariffs, governs and may limit the liability of the carrier. These conventions govern and may limit the liability of air carriers for death or bodily injury or loss of or damage to baggage, and for delay.

P eprava látek a materiálů nebezpečné povahy, jako například aerosoly, zábavní pyrotechnika a hořlavé kapaliny, je zakázána. V případě jakýchkoliv nejasností kontaktujte svého dopravce pro podrobné informace.