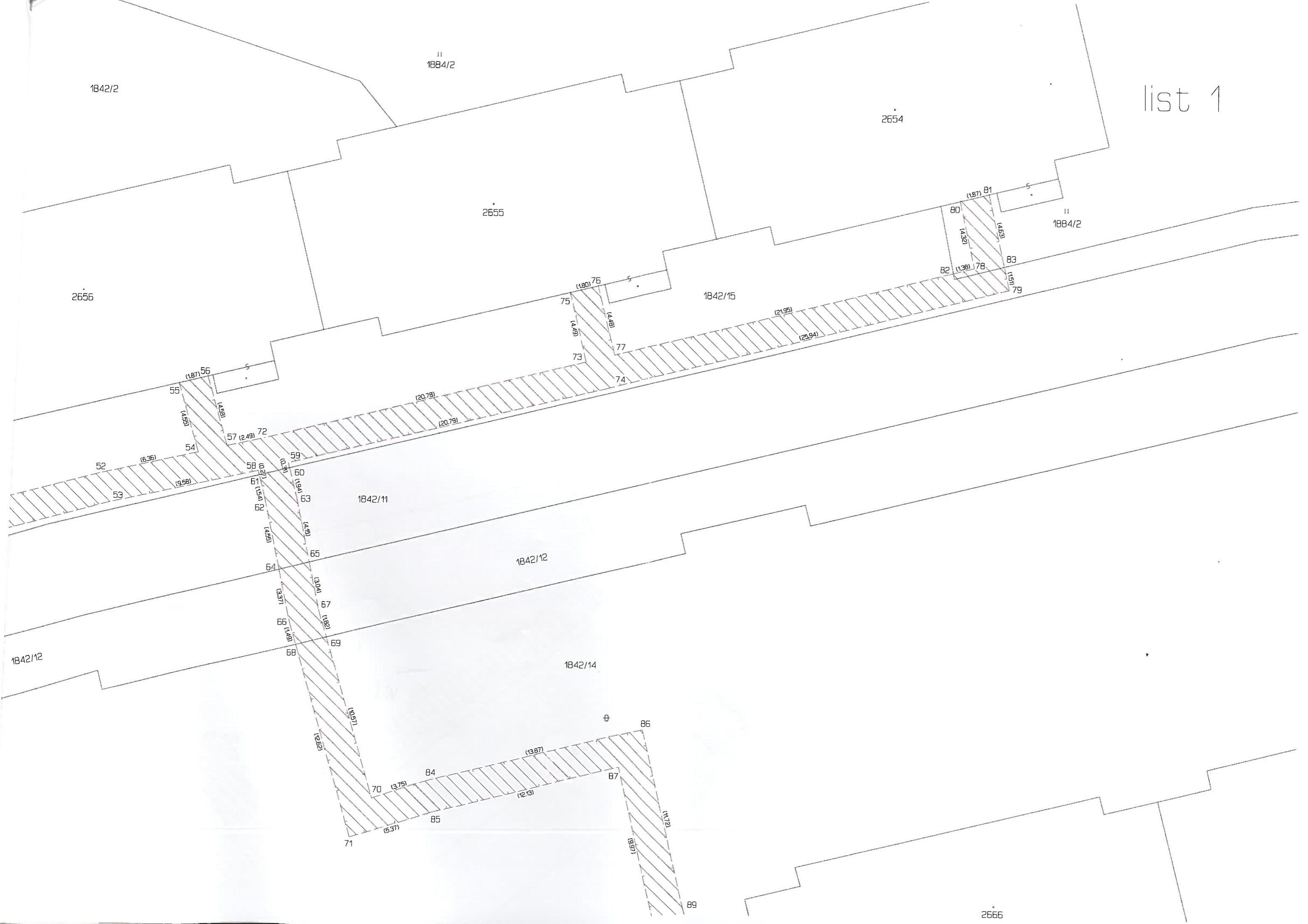




list 1



1842/2

11  
1884/2

2654

2655

11  
1884/2

2656

1842/15

1842/11

1842/12

1842/14

1842/12

2656

55 (1.87) 56

55 (4.53)

54 (4.53)

52 (6.36)

53 (9.56)

57 (2.49) 72

58 (0.37)

59 (1.94)

60 (4.9)

61 (1.54)

62 (4.53)

63 (4.53)

64 (3.37)

65 (3.04)

66 (1.88)

67 (4.53)

68 (1.54)

69 (1.54)

71 (5.37)

70 (3.75)

84 (13.87)

85 (12.13)

75 (1.80) 76

73 (4.43)

74 (4.43)

77 (4.43)

(21.95)

(25.94)

82 (1.38)

78 (4.53)

80 (1.87) 81

83 (4.53)

79 (1.54)

86

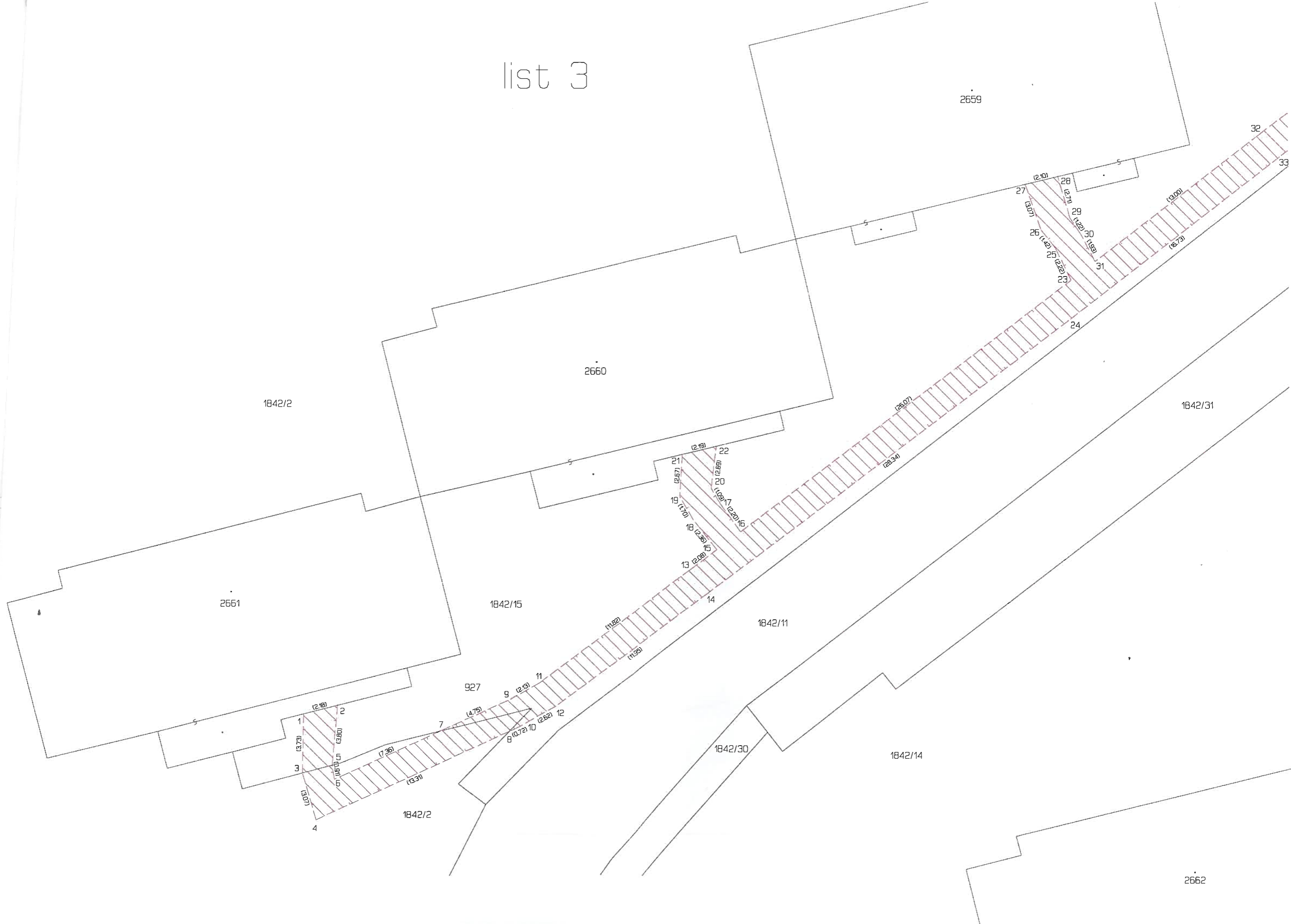
87 (4.72)

89 (9.57)





list 3



1842/2

2660

2659

2661

1842/15

1842/11

1842/31

1842/2

1842/30

1842/14

2662

1 (2.18)

2 (3.80)

3 (3.73)

4 (4.03)

5 (5.10)

6 (5.31)

7 (7.35)

8 (4.75)

9 (0.72)

10 (2.62)

11 (2.10)

12 (1.82)

13 (1.35)

14 (2.34)

15 (2.08)

16 (2.35)

17 (1.70)

18 (2.67)

19 (2.57)

20 (2.19)

21 (1.99)

22 (2.20)

23 (2.65)

24 (1.09)

25 (2.22)

26 (1.42)

27 (3.07)

28 (2.10)

29 (3.71)

30 (2.22)

31 (1.89)

32 (3.00)

33 (6.73)

list 4





list 5

2667

2666

2665

1842/14

1842/30

1842/11

1842/23

1842/25

1842/26

1842/54

1842/23

623-1242  
623-1241

623-1240

623-1239

2.95

2.90

2.90

2.95

2.95

1842/31

2664

list 6

2663

2662

1842/30

1842/30

1842/25

1842/11

1842/78

1842/79

1842/29

1842/79

