

Seznam souřadnic (S-JTSK)

č. bodu	Souřadnice pro zápis do KN			č. bodu	Souřadnice pro zápis do KN		
	Y	X	kv.		Y	X	kv.
183-6	818705.95	1017049.71	8	55	818959.17	1017179.85	3
338-30	818862.40	1017103.88	3	56	818959.29	1017179.27	3
338-31	818854.67	1017103.66	3	57	818951.11	1017177.84	3
339-24	818633.43	1016944.35	3	58	818950.67	1017178.38	3
406-3539	818633.85	1016943.12	3	59	818950.48	1017177.89	3
410-296	818999.43	1017189.37	8	60	818950.58	1017176.10	3
410-297	819039.13	1017219.15	8	61	818951.42	1017175.64	8
410-329	818969.44	1017181.50	8	62	818946.76	1017174.75	3
410-330	818951.19	1017176.71	8	63	818946.58	1017175.33	3
428-32	818708.55	1017054.49	8	64	818944.49	1017174.42	3
428-104	819062.70	1017215.38	8	65	818944.71	1017173.86	3
437-1148	819058.70	1017212.79	8	66	818939.51	1017171.93	3
437-1519	818865.98	1017175.09	8	67	818939.33	1017172.51	3
1	819073.19	1017222.54	3	68	818934.82	1017171.23	3
2	819065.91	1017218.71	3	69	818935.00	1017170.65	3
3	819072.35	1017222.78	3	70	818928.42	1017168.58	3
4	819065.57	1017219.21	3	71	818928.14	1017169.12	3
5	819062.56	1017215.84	3	72	818927.22	1017168.38	3
6	819063.37	1017214.28	8	73	818927.80	1017168.08	3
7	819062.43	1017214.15	3	74	818927.75	1017166.54	3
8	819061.86	1017215.25	3	75	818928.78	1017166.82	8
9	819061.88	1017216.04	3	76	818928.95	1017165.94	8
10	819059.24	1017213.89	3	77	818927.14	1017166.18	3
11	819059.60	1017213.37	8	78	818920.61	1017163.51	3
12	819057.37	1017212.11	3	79	818920.81	1017162.93	3
13	819057.03	1017212.61	3	80	818917.10	1017161.95	3
14	819055.70	1017211.54	3	81	818917.02	1017161.04	3
15	819056.35	1017211.29	3	82	818916.13	1017161.11	3
16	819056.86	1017210.07	3	83	818916.19	1017161.87	3
17	819056.03	1017209.72	3	84	818916.63	1017162.45	3
18	819055.57	1017210.81	3	85	818914.73	1017162.55	3
19	819048.27	1017207.33	3	86	818914.75	1017161.95	3
20	819048.03	1017207.89	3	87	818905.65	1017160.93	3
21	819042.52	1017205.71	3	88	818905.57	1017161.53	3
22	819042.76	1017205.15	3	89	818903.65	1017161.23	8
23	819030.59	1017199.57	3	90	818903.84	1017160.65	3
24	819030.66	1017199.11	8	91	818901.61	1017159.29	8
25	819029.81	1017198.77	8	92	818901.51	1017159.98	3
26	819030.24	1017200.07	3	93	818899.32	1017158.29	3
27	819029.67	1017201.11	3	94	818899.72	1017157.83	3
28	819029.41	1017200.33	3	95	818898.34	1017156.46	3
29	819023.61	1017197.77	3	96	818897.88	1017156.84	3
30	819023.37	1017198.33	3	97	818895.76	1017153.69	3
31	819017.35	1017195.83	3	98	818896.30	1017153.41	3
32	819017.55	1017195.27	3	99	818895.40	1017150.98	3
33	819016.30	1017194.93	3	100	818894.82	1017151.14	3
34	819016.12	1017195.51	3	101	818894.18	1017147.75	3
35	819010.03	1017193.24	3	102	818894.76	1017147.63	3
36	819010.62	1017192.82	3	103	818893.98	1017144.26	3
37	819010.65	1017192.65	8	104	818893.38	1017144.36	3
38	819006.37	1017191.53	8	105	818893.15	1017141.62	3
39	818998.80	1017189.17	8	106	818893.75	1017141.59	3
40	818998.92	1017188.81	3	107	818892.82	1017141.07	3
41	818998.08	1017188.51	3	108	818885.95	1017142.43	3
42	818997.94	1017188.90	8	109	818886.21	1017142.99	3
43	818998.15	1017189.71	3	110	818885.94	1017143.21	3
44	818988.53	1017187.05	3	111	818885.40	1017142.89	3
45	818988.69	1017186.47	3	112	818885.22	1017143.72	3
46	818980.95	1017184.55	3	113	818885.82	1017143.76	3
47	818981.04	1017184.27	8	114	818885.95	1017145.87	3
48	818980.16	1017184.05	8	115	818885.35	1017145.93	3
49	818980.08	1017184.33	3	116	818885.80	1017148.54	3
50	818980.36	1017185.02	3	117	818885.00	1017148.69	3
51	818969.81	1017182.44	3	118	818885.17	1017149.58	3
52	818970.07	1017181.88	3	119	818885.95	1017149.43	3
53	818970.14	1017181.68	8	120	818886.47	1017148.88	3
54	818969.46	1017182.17	3	121	818887.12	1017152.99	3

Seznam souřadnic (S-JTSK)

č. bodu	Souřadnice pro zápis do KN			č. bodu	Souřadnice pro zápis do KN		
	Y	X	kv.		Y	X	kv.
122	818886.54	1017153.11	3	189	819059.65	1017235.34	3
123	818887.11	1017155.70	3	190	819059.10	1017236.41	3
124	818887.71	1017155.60	3	191	819061.83	1017237.81	3
125	818888.09	1017158.45	3	192	819062.84	1017237.53	3
126	818887.51	1017158.69	3	193	819065.39	1017235.37	3
127	818893.18	1017166.20	3	194	819066.02	1017234.34	3
128	818893.66	1017165.84	3	195	819064.74	1017234.71	3
129	818897.21	1017170.70	3	196	819065.54	1017233.96	3
130	818896.75	1017171.08	3	197	818904.38	1017180.94	3
131	818900.65	1017175.51	3	198	818903.28	1017182.34	3
132	818901.13	1017175.13	3	199	818902.42	1017181.50	3
133	818902.92	1017177.68	3	200	818901.33	1017182.43	3
134	818902.40	1017177.98	3	201	818901.91	1017183.51	3
135	818903.37	1017180.29	3	202	818901.63	1017183.59	3
136	818903.92	1017180.04	8	203	818901.05	1017182.51	3
137	818907.26	1017180.22	8	204	818897.30	1017185.68	3
138	818904.86	1017180.78	3	205	818897.98	1017186.68	3
139	818915.10	1017182.27	3	206	818897.31	1017187.03	3
140	818919.26	1017183.01	8	207	818896.65	1017186.03	3
141	818915.24	1017181.39	3	208	818892.62	1017189.21	3
142	818925.82	1017183.26	3	209	818890.56	1017187.97	3
143	818926.99	1017183.31	3	210	818889.72	1017189.57	3
144	818931.44	1017183.89	3	211	818882.66	1017186.26	3
145	818936.66	1017184.69	3	212	818880.29	1017184.80	3
146	818963.44	1017190.14	3	213	818880.07	1017185.19	3
147	818978.51	1017193.14	3	214	818878.49	1017184.33	3
148	818988.31	1017195.82	3	215	818879.12	1017183.16	3
149	818992.41	1017196.94	3	216	818883.52	1017184.68	3
150	818988.47	1017196.85	8	217	818880.08	1017182.55	3
151	818992.15	1017197.80	3	218	818879.26	1017181.56	3
152	818998.45	1017199.79	3	219	818879.18	1017181.36	3
153	818998.73	1017198.93	3	220	818880.18	1017181.42	3
154	819012.18	1017203.76	3	221	818879.86	1017180.62	3
155	819011.84	1017204.60	3	222	818877.60	1017179.93	3
156	819015.48	1017206.27	3	223	818877.38	1017180.81	3
157	819015.16	1017206.88	8	224	818874.88	1017180.33	3
158	819015.96	1017207.29	8	225	818875.08	1017179.45	3
159	819016.31	1017206.63	3	226	818873.93	1017179.16	3
160	819016.28	1017205.65	3	227	818873.56	1017180.20	3
161	819023.84	1017208.65	3	228	818874.64	1017177.16	3
162	819023.50	1017209.47	3	229	818874.08	1017176.96	3
163	819028.86	1017211.88	3	230	818873.42	1017178.82	3
164	819029.24	1017211.06	3	231	818872.28	1017176.95	3
165	819040.82	1017216.98	3	232	818871.80	1017177.31	3
166	819039.99	1017217.57	3	233	818870.76	1017176.17	3
167	819040.08	1017219.68	8	234	818871.08	1017175.63	3
168	819040.45	1017218.58	3	235	818867.26	1017174.74	3
169	819040.80	1017217.97	3	236	818866.02	1017174.38	3
170	819041.38	1017218.23	3	237	818865.73	1017175.05	8
171	819041.80	1017217.43	3	238	818893.50	1017191.84	3
172	819043.92	1017218.67	8	239	818893.03	1017192.39	3
173	819043.52	1017219.48	3	240	818893.71	1017192.97	3
174	819047.75	1017221.72	3	241	818894.32	1017192.27	3
175	819048.19	1017220.94	3	242	818893.27	1017190.23	3
176	819053.20	1017223.79	3	243	818894.60	1017191.26	3
177	819052.70	1017224.53	3	244	818898.19	1017195.10	3
178	819055.45	1017226.69	3	245	818897.51	1017195.68	3
179	819056.01	1017225.99	3	246	818903.33	1017203.01	3
180	819059.10	1017228.57	3	247	818904.07	1017202.49	3
181	819058.44	1017229.19	3	248	818906.90	1017206.96	3
182	819060.20	1017231.55	3	249	818906.10	1017207.38	3
183	819060.90	1017230.99	3	250	818907.31	1017210.11	3
184	819061.93	1017232.22	3	251	818908.15	1017209.81	3
185	819061.29	1017232.84	3	252	818909.21	1017213.52	3
186	819063.84	1017235.11	3	253	818908.33	1017213.72	3
187	819062.26	1017236.45	3	254	818908.90	1017217.26	3
188	819061.97	1017236.53	3	255	818909.80	1017217.22	3

Seznam souřadnic (S-JTSK)

č. bodu	Souřadnice pro zápis do KN			č. bodu	Souřadnice pro zápis do KN		
	Y	X	kv.		Y	X	kv.
256	818909.67	1017219.29	3	323	818892.47	1017116.40	3
257	818908.77	1017219.19	3	324	818891.57	1017116.54	3
258	818908.25	1017222.88	3	325	818890.99	1017111.02	3
259	818909.13	1017223.06	3	326	818891.89	1017110.94	3
260	818907.46	1017228.93	3	327	818891.79	1017109.41	3
261	818906.60	1017228.67	3	328	818890.91	1017109.68	3
262	818904.64	1017228.03	8	329	818890.38	1017108.23	3
263	818904.43	1017228.90	8	330	818891.20	1017107.83	3
264	818906.34	1017229.54	3	331	818890.28	1017106.39	3
265	818907.20	1017229.79	3	332	818889.66	1017107.09	3
266	818905.88	1017234.05	3	333	818889.34	1017106.94	3
267	818905.02	1017233.81	3	334	818889.80	1017106.16	3
268	818903.92	1017238.17	3	335	818888.65	1017105.36	3
269	818904.88	1017238.04	3	336	818888.59	1017106.41	3
270	818907.76	1017239.25	3	337	818886.93	1017109.63	3
271	818910.99	1017240.34	8	338	818886.42	1017111.00	3
272	818910.57	1017241.15	8	339	818886.20	1017111.98	3
273	818907.44	1017240.09	3	340	818886.63	1017112.03	3
274	818904.63	1017238.91	3	341	818886.54	1017112.92	3
275	818903.70	1017241.91	3	342	818885.10	1017112.78	3
276	818902.84	1017241.67	3	343	818885.56	1017110.74	3
277	818901.05	1017249.43	3	344	818886.11	1017109.27	3
278	818901.93	1017249.67	3	345	818887.81	1017105.95	3
279	818900.49	1017254.36	3	346	818885.40	1017104.74	3
280	818899.65	1017254.06	3	347	818885.68	1017103.88	3
281	818897.96	1017258.15	3	348	818880.44	1017103.11	3
282	818898.70	1017258.71	3	349	818880.40	1017104.01	3
283	818897.40	1017259.73	3	350	818877.16	1017104.15	3
284	818896.83	1017259.74	8	351	818877.14	1017103.25	3
285	818897.35	1017258.63	8	352	818873.08	1017103.18	3
286	818909.74	1017229.50	3	353	818873.08	1017104.08	3
287	818909.86	1017230.46	3	354	818865.41	1017104.23	3
288	818911.22	1017229.74	3	355	818865.45	1017103.33	3
289	818910.94	1017228.88	3	356	818859.53	1017102.68	3
290	818912.66	1017228.62	3	357	818853.24	1017102.86	3
291	818912.48	1017229.56	3	358	818853.42	1017101.77	3
292	818916.09	1017231.68	3	359	818852.53	1017101.62	3
293	818916.59	1017230.94	3	360	818852.34	1017102.77	3
294	818922.24	1017235.22	3	361	818852.66	1017103.78	3
295	818921.66	1017235.92	3	362	818851.28	1017103.43	3
296	818926.96	1017240.65	3	363	818851.36	1017102.53	3
297	818927.58	1017240.01	3	364	818848.42	1017102.71	3
298	818930.97	1017243.49	3	365	818848.46	1017103.61	3
299	818929.91	1017243.69	3	366	818844.92	1017103.65	3
300	818928.75	1017246.44	8	367	818846.75	1017102.73	8
301	818929.54	1017246.89	8	369	818828.20	1017104.15	8
302	818894.39	1017141.25	3	370	818823.20	1017104.18	8
303	818893.83	1017140.53	3	371	818817.92	1017104.22	3
304	818894.46	1017139.88	3	372	818817.89	1017103.32	8
305	818895.26	1017140.34	3	373	818816.45	1017103.43	3
306	818895.44	1017139.74	8	374	818816.43	1017104.33	3
307	818895.71	1017138.08	3	375	818812.38	1017103.89	3
308	818894.72	1017138.99	3	376	818812.52	1017103.01	3
309	818894.97	1017136.52	3	377	818810.27	1017102.51	3
310	818895.87	1017136.56	3	378	818810.09	1017103.39	3
311	818895.87	1017132.28	3	379	818803.08	1017102.19	3
312	818894.97	1017132.24	3	380	818803.24	1017101.31	3
313	818895.25	1017129.30	3	381	818793.17	1017099.33	3
314	818896.15	1017129.30	3	382	818792.99	1017100.21	3
315	818895.93	1017126.91	3	383	818788.18	1017099.19	3
316	818895.03	1017127.03	3	384	818788.56	1017098.35	3
317	818894.69	1017125.18	3	385	818787.54	1017097.57	8
318	818895.57	1017124.94	3	386	818787.06	1017098.34	3
319	818894.10	1017121.02	3	387	818780.50	1017097.12	3
320	818893.26	1017121.36	3	388	818775.87	1017095.60	3
321	818891.93	1017118.20	3	389	818775.75	1017094.24	8
322	818892.79	1017117.92	3	390	818774.09	1017093.92	3

Seznam souřadnic (S-JTSK)

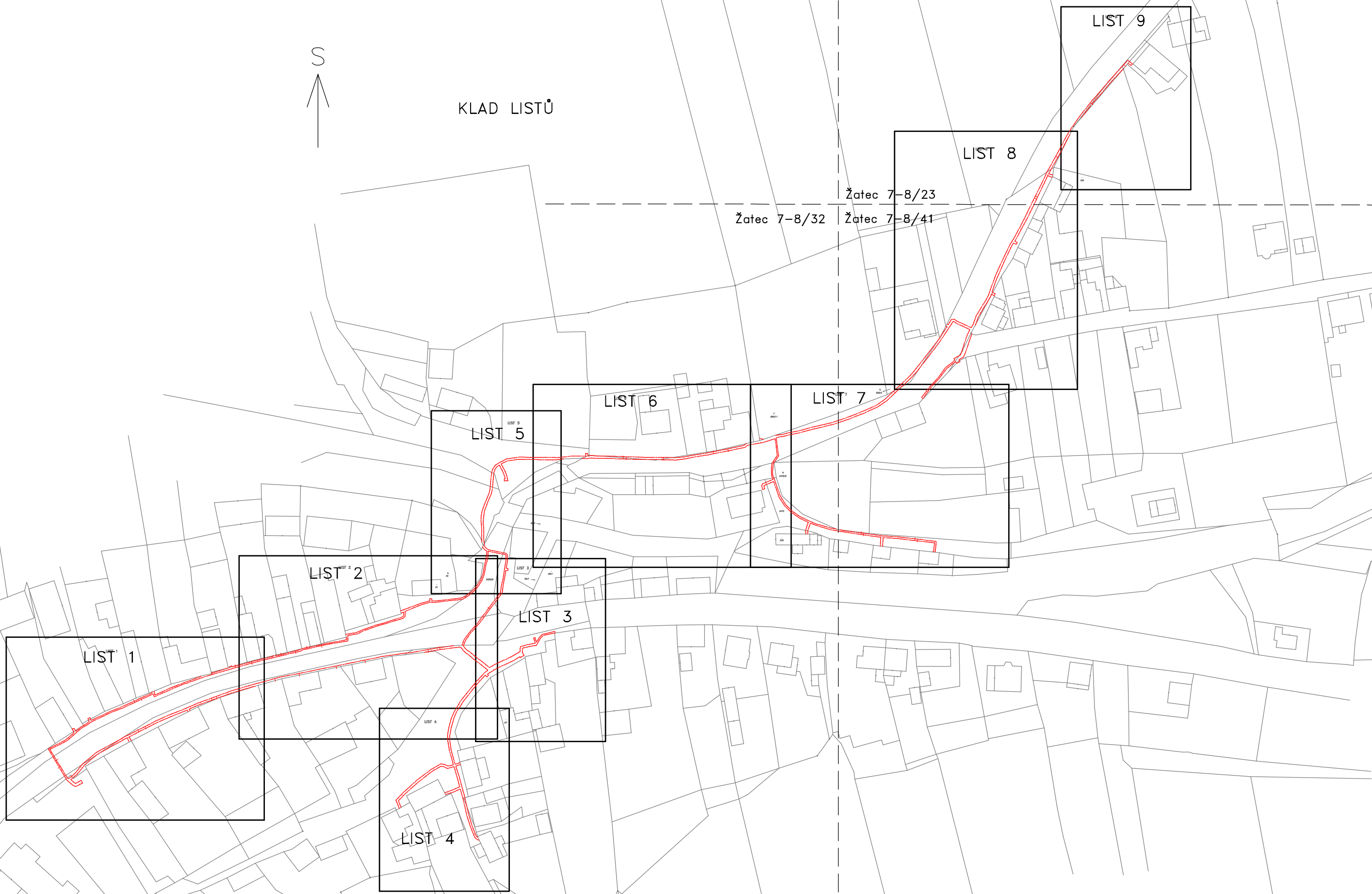
č. bodu	Souřadnice pro zápis do KN			č. bodu	Souřadnice pro zápis do KN		
	Y	X	kv.		Y	X	kv.
391	818775.31	1017095.26	3	461	818694.74	1017048.63	3
392	818773.93	1017094.82	3	462	818694.01	1017049.24	8
393	818772.50	1017094.74	3	463	818692.71	1017045.77	3
394	818772.66	1017093.84	3	464	818693.53	1017045.39	3
395	818770.99	1017093.35	3	465	818690.89	1017040.87	3
396	818770.77	1017094.23	3	466	818690.15	1017041.37	3
397	818765.79	1017093.15	3	467	818689.37	1017040.37	3
398	818766.01	1017092.27	3	468	818690.13	1017039.87	3
399	818760.88	1017090.91	3	469	818688.45	1017036.80	3
400	818760.66	1017091.79	3	470	818687.63	1017037.16	3
401	818756.68	1017090.92	3	471	818687.41	1017036.51	3
402	818756.88	1017090.04	3	472	818686.19	1017037.18	3
403	818751.91	1017088.75	3	473	818685.82	1017036.36	3
404	818751.65	1017089.61	3	474	818687.11	1017035.64	3
405	818745.97	1017087.71	3	475	818685.67	1017031.37	3
406	818746.27	1017086.87	3	476	818686.51	1017031.05	3
407	818739.76	1017084.35	3	477	818685.30	1017028.10	3
408	818739.42	1017085.19	3	478	818684.48	1017028.46	3
409	818733.92	1017082.68	3	479	818681.71	1017022.30	3
410	818734.36	1017081.90	3	480	818682.53	1017021.92	3
411	818730.64	1017079.30	3	481	818679.70	1017016.07	3
412	818730.08	1017080.00	3	482	818678.92	1017016.51	3
413	818723.98	1017074.28	8	483	818678.34	1017015.60	3
414	818727.10	1017075.97	8	484	818677.24	1017016.18	3
416	818716.45	1017066.31	8	485	818676.82	1017015.38	3
417	818712.61	1017061.43	3	486	818677.86	1017014.84	3
420	818708.43	1017055.86	3	487	818677.61	1017014.45	3
421	818704.49	1017049.89	3	488	818678.39	1017013.99	3
422	818705.51	1017049.80	3	489	818675.39	1017008.61	3
423	818705.49	1017048.77	8	490	818674.59	1017009.03	3
424	818705.02	1017049.04	3	491	818672.55	1017005.03	3
425	818703.69	1017046.90	3	492	818673.35	1017004.63	3
426	818703.15	1017047.72	3	493	818665.76	1016989.06	3
427	818702.77	1017047.66	3	494	818664.94	1016989.42	3
428	818702.57	1017046.72	3	495	818664.39	1016988.09	3
429	818701.27	1017047.60	3	496	818662.40	1016988.67	8
430	818701.71	1017048.38	3	497	818662.21	1016987.79	8
431	818696.24	1017050.97	3	498	818663.98	1016987.27	3
432	818696.34	1017051.46	3	499	818665.06	1016987.35	3
433	818696.96	1017052.67	3	500	818660.48	1016979.10	3
434	818695.29	1017052.69	3	501	818659.68	1016979.52	3
435	818695.60	1017053.29	3	502	818655.99	1016972.46	3
436	818695.91	1017054.06	3	503	818655.26	1016971.30	3
437	818697.31	1017053.54	3	504	818656.77	1016972.00	3
438	818699.59	1017060.13	3	505	818654.22	1016967.99	3
439	818698.32	1017061.07	3	506	818652.01	1016964.82	3
440	818698.89	1017062.34	3	507	818650.49	1016964.32	3
441	818700.53	1017061.56	3	508	818646.70	1016959.36	3
442	818702.68	1017062.82	3	509	818646.44	1016959.58	3
443	818700.64	1017063.36	3	510	818645.86	1016958.90	3
444	818700.40	1017063.78	3	511	818646.14	1016958.65	3
445	818701.57	1017064.75	3	513	818645.58	1016957.93	3
446	818702.02	1017063.97	3	514	818646.26	1016957.35	3
447	818702.49	1017064.52	3	515	818643.81	1016954.68	3
448	818702.34	1017063.42	3	516	818643.13	1016955.28	3
449	818702.93	1017064.10	3	517	818638.08	1016949.33	3
450	818706.03	1017066.45	3	518	818638.76	1016948.73	3
451	818705.59	1017066.87	3	519	818631.59	1016940.78	3
452	818708.40	1017070.65	3	520	818629.67	1016942.30	3
453	818708.86	1017070.27	3	521	818630.23	1016943.00	3
454	818712.66	1017074.42	3	522	818631.43	1016942.05	3
455	818712.20	1017074.80	3	525	818774.35	1017102.62	3
456	818715.07	1017078.71	3	526	818774.97	1017102.48	3
457	818714.91	1017078.85	8	527	818777.16	1017105.77	3
458	818715.32	1017079.29	8	528	818776.58	1017105.97	3
459	818715.89	1017078.79	3	529	818776.81	1017108.76	3
460	818695.63	1017050.21	3	530	818777.41	1017108.76	3

Seznam souřadnic (S-JTSK)

č. bodu	Souřadnice pro zápis do KN			č. bodu	Souřadnice pro zápis do KN		
	Y	X	kv.		Y	X	kv.
531	818777.28	1017110.75	3	598	819070.75	1017225.41	8
532	818776.68	1017110.63	3	599	818894.76	1017138.54	8
533	818776.03	1017112.53	3	600	818894.80	1017138.15	3
534	818776.73	1017112.32	3	601	818892.32	1017115.06	3
535	818780.89	1017114.06	3	602	818891.45	1017115.35	3
536	818781.38	1017114.65	3	603	818890.93	1017109.90	3
537	818781.24	1017115.49	3	604	818852.38	1017102.54	3
538	818780.94	1017116.41	3	605	818776.04	1017105.17	8
539	818780.08	1017116.13	3	606	818776.21	1017105.43	8
540	818780.36	1017115.27	3	607	818776.95	1017105.45	8
541	818780.43	1017114.84	3	608	818776.92	1017111.79	8
542	818776.44	1017113.17	3	609	818776.32	1017111.69	8
543	818774.15	1017119.57	3	610	818779.59	1017113.51	8
544	818773.61	1017119.31	3	611	818779.30	1017114.37	8
545	818771.43	1017122.66	3	612	818763.35	1017133.15	8
546	818771.89	1017123.04	3	613	818750.72	1017132.59	8
547	818769.40	1017125.54	3	614	818749.36	1017132.85	8
548	818769.02	1017125.08	3	615	818687.26	1017036.59	8
549	818765.61	1017127.48	3	616	818686.84	1017035.79	8
550	818765.91	1017128.00	3	617	818664.61	1016986.55	3
551	818762.26	1017129.80	3	618	818662.97	1016985.45	3
552	818763.41	1017133.31	3	619	818630.84	1016941.37	3
553	818763.28	1017134.61	8				
554	818762.38	1017134.61	8				
555	818762.47	1017133.35	8				
556	818761.43	1017130.16	3				
557	818761.64	1017129.44	3				
558	818758.79	1017130.55	3				
559	818758.99	1017131.11	3				
560	818753.52	1017132.65	3				
561	818753.38	1017132.07	3				
562	818747.73	1017133.17	3				
563	818747.83	1017133.77	3				
564	818732.54	1017135.85	3				
565	818732.84	1017139.57	8				
566	818731.94	1017139.67	8				
567	818731.65	1017135.94	3				
568	818732.04	1017135.31	3				
569	818725.75	1017135.81	3				
570	818725.81	1017136.41	3				
571	818710.63	1017138.14	3				
572	818710.95	1017141.43	3				
573	818711.35	1017141.91	8				
574	818710.68	1017141.98	8				
575	818710.37	1017141.75	3				
576	818709.97	1017137.62	3				
577	819062.02	1017214.94	8				
578	819056.59	1017210.71	8				
579	819055.80	1017210.27	8				
580	818886.92	1017142.24	8				
581	818887.13	1017142.81	8				
582	818890.43	1017161.55	8				
583	818890.31	1017162.39	8				
584	818895.61	1017168.50	8				
585	818894.73	1017168.33	8				
586	818903.26	1017180.03	8				
587	818902.67	1017242.40	8				
588	818901.73	1017246.51	8				
589	818926.35	1017183.28	8				
590	819059.27	1017228.79	8				
591	819063.47	1017233.58	8				
592	819062.94	1017234.31	8				
593	819065.23	1017234.25	8				
594	819065.79	1017234.70	8				
595	819066.49	1017233.56	8				
596	819071.25	1017225.74	8				
597	819065.99	1017233.23	8				



KLAD LISTŮ



LIST 1

LIST 2

LIST 3

LIST 4

LIST 5

LIST 6

LIST 7

LIST 8

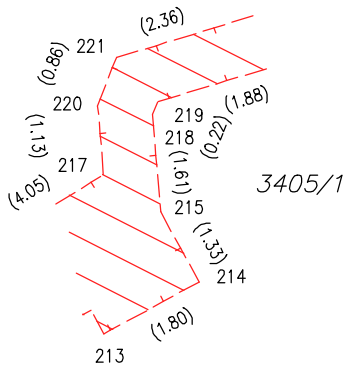
LIST 9

Žatec 7-8/23

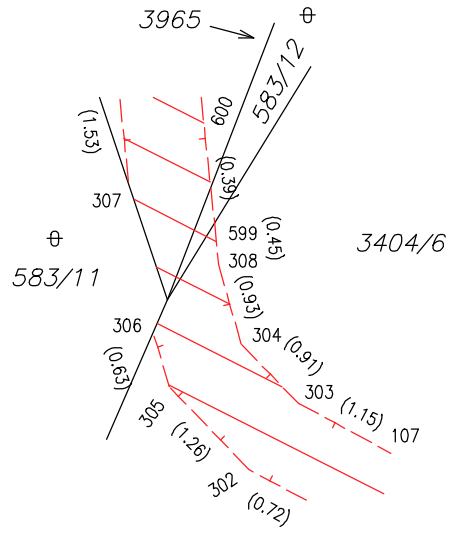
Žatec 7-8/32

Žatec 7-8/41

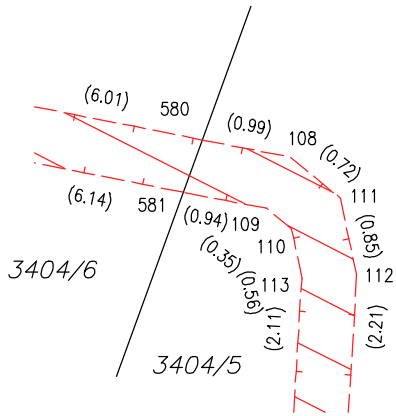
Detail:E



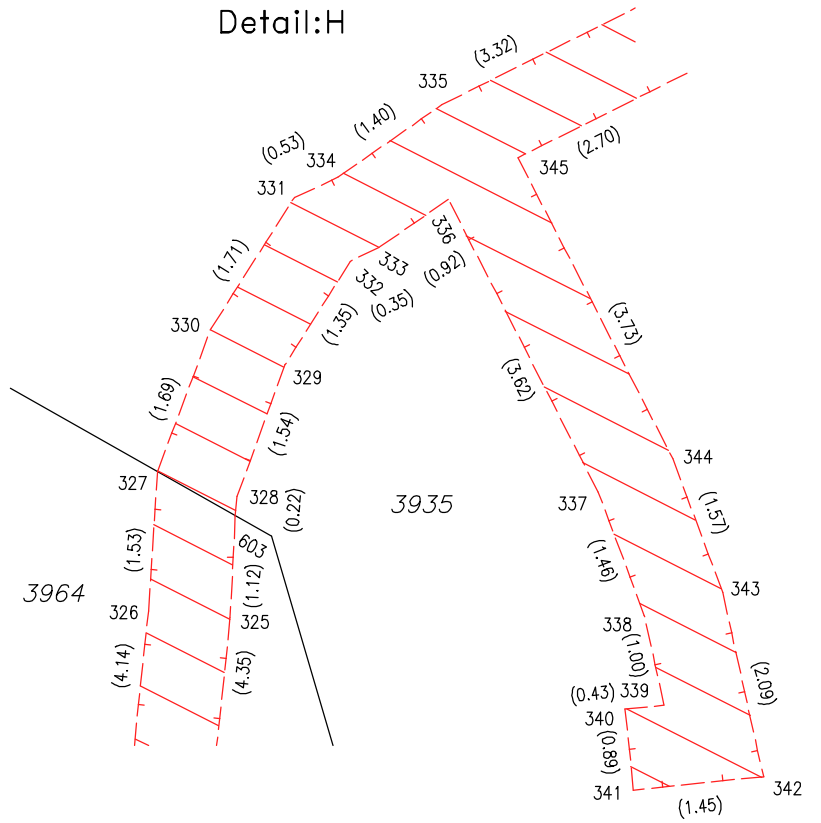
Detail:F



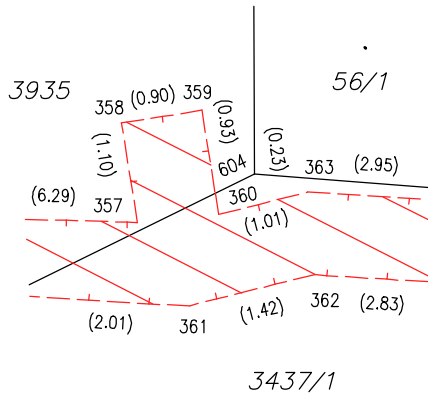
Detail:G



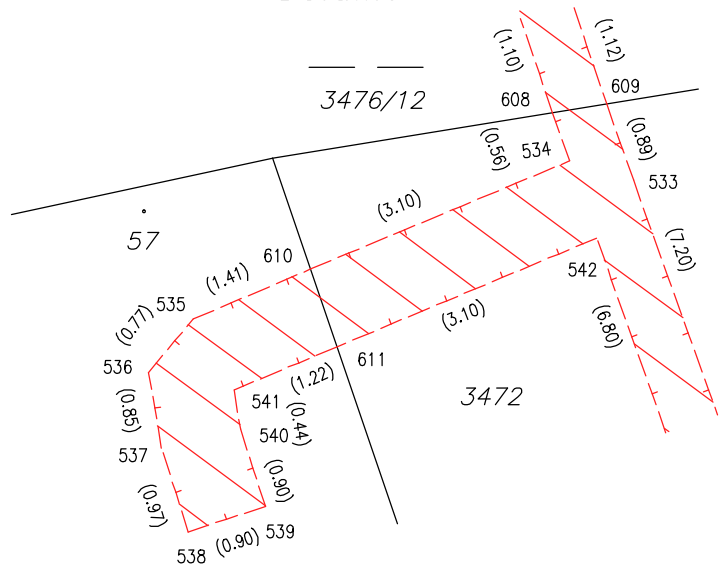
Detail:H



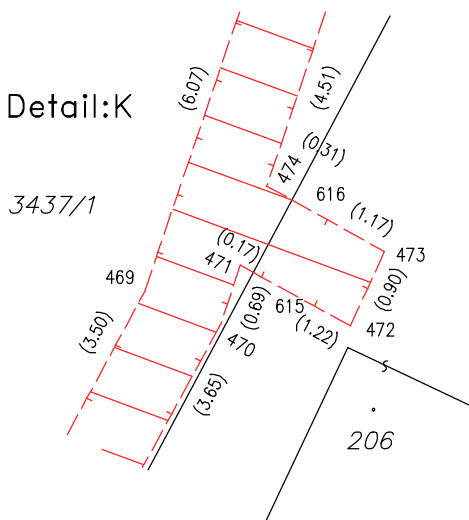
Detail:I



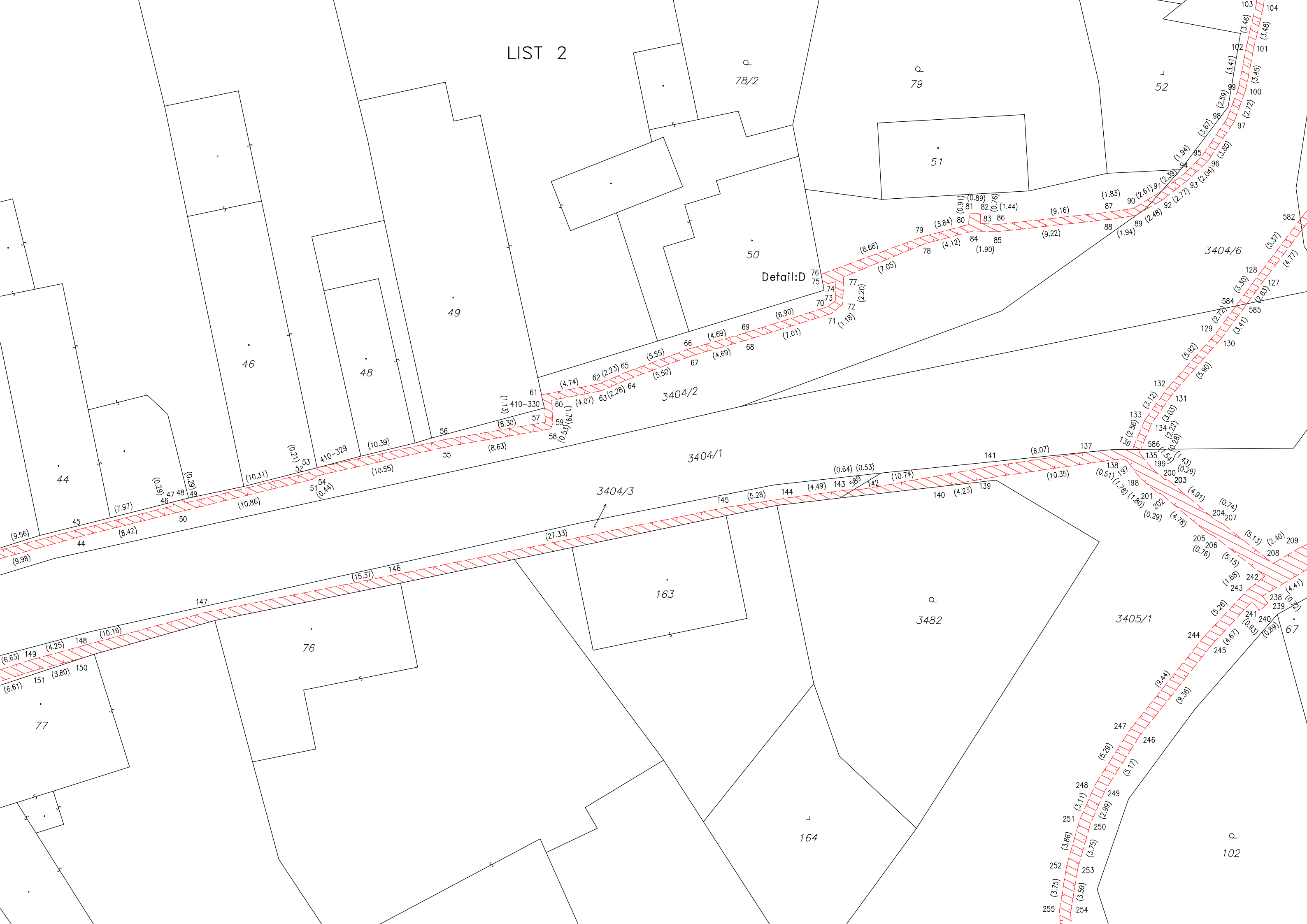
Detail:J



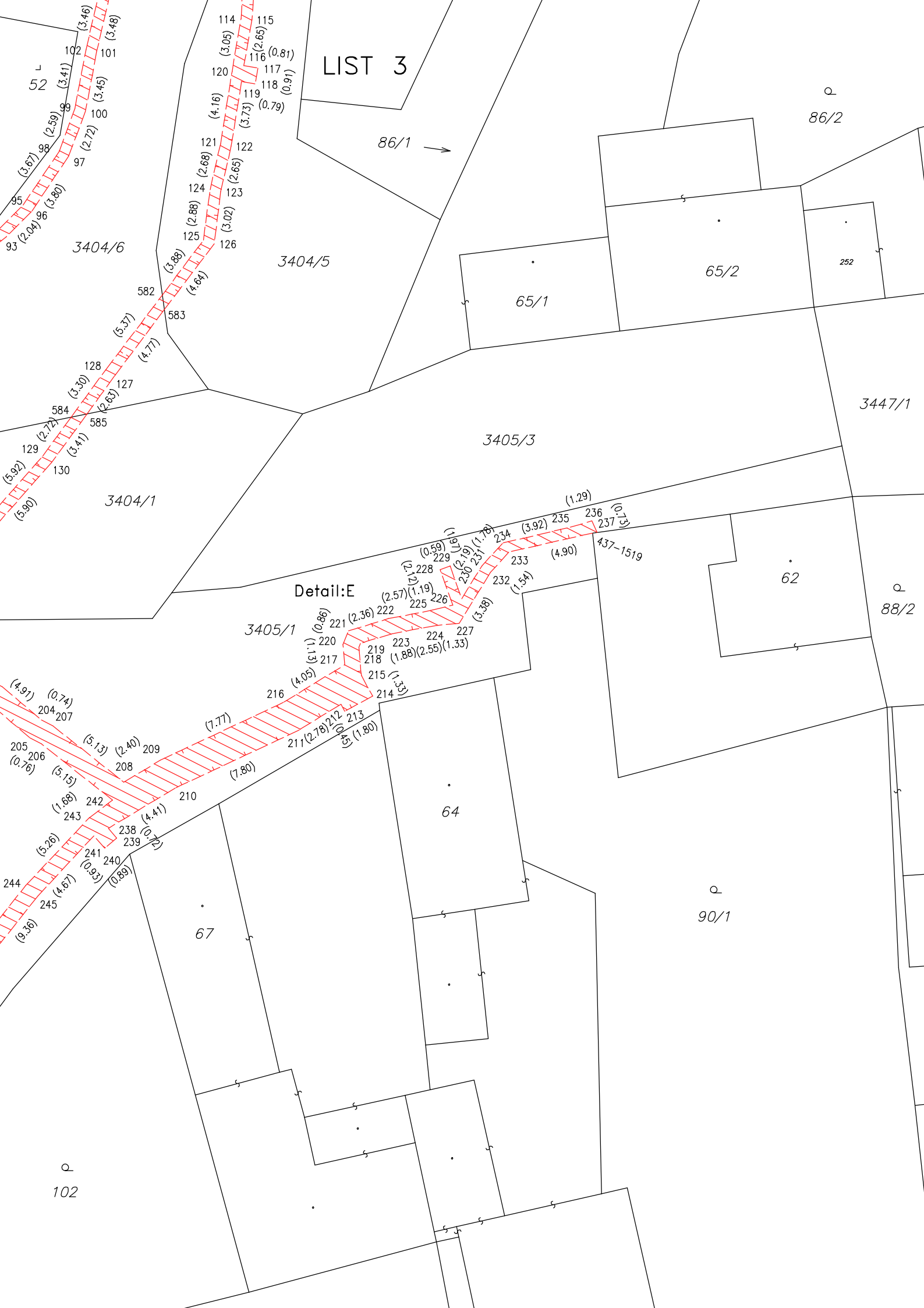
Detail:K



LIST 2



LIST 3



LIST 4



⊕ 871/3

⊕ 871/2

LIST 5

898/13

3935

Detail:H

3964

3965

⊕ 583/10

⊕ 583/11

⊕ 80

Detail:F

⊕ 583/12

86/1 →

⊕ 83

3408

54

Detail:G

306

3404/6

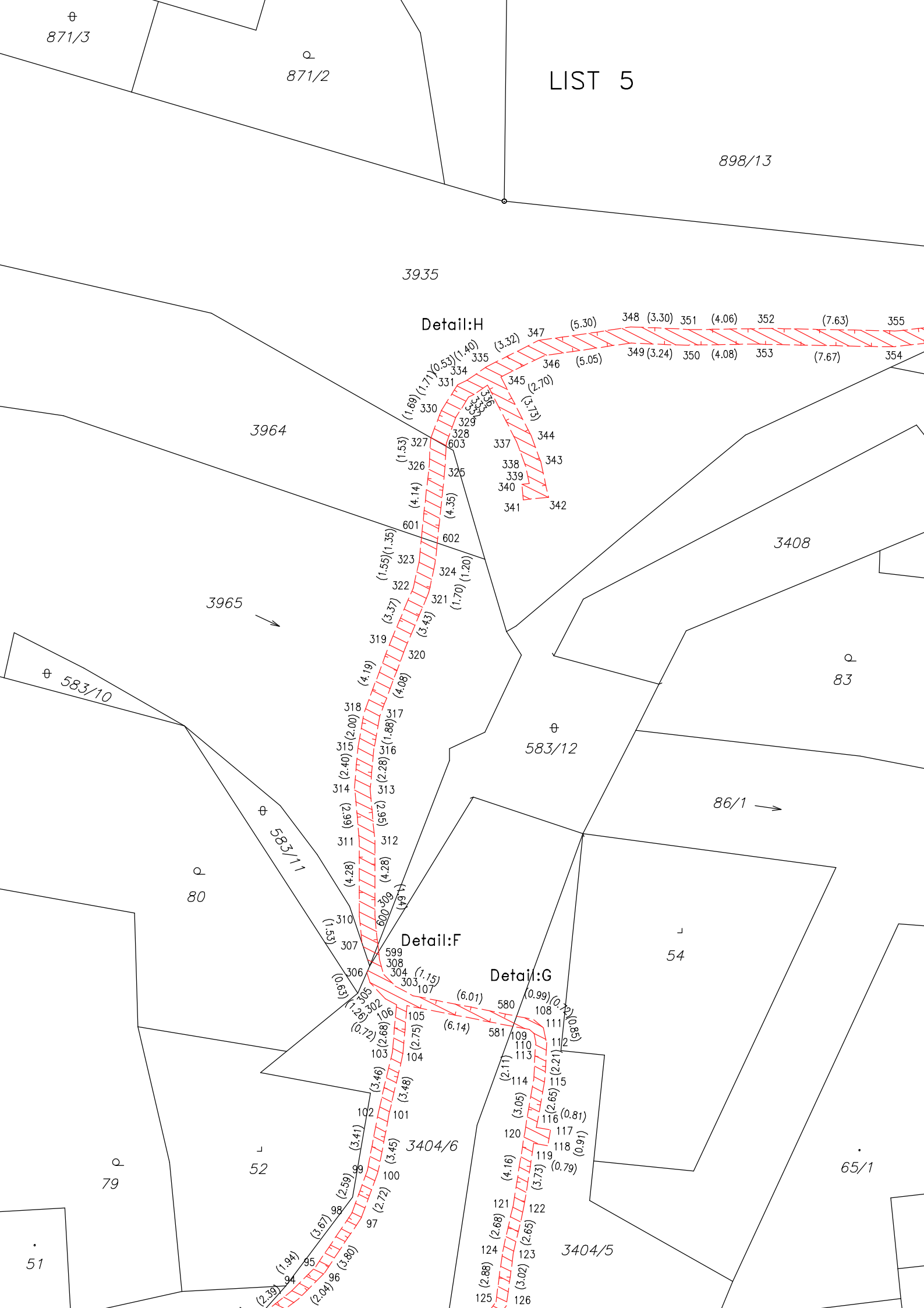
⊕ 79

52

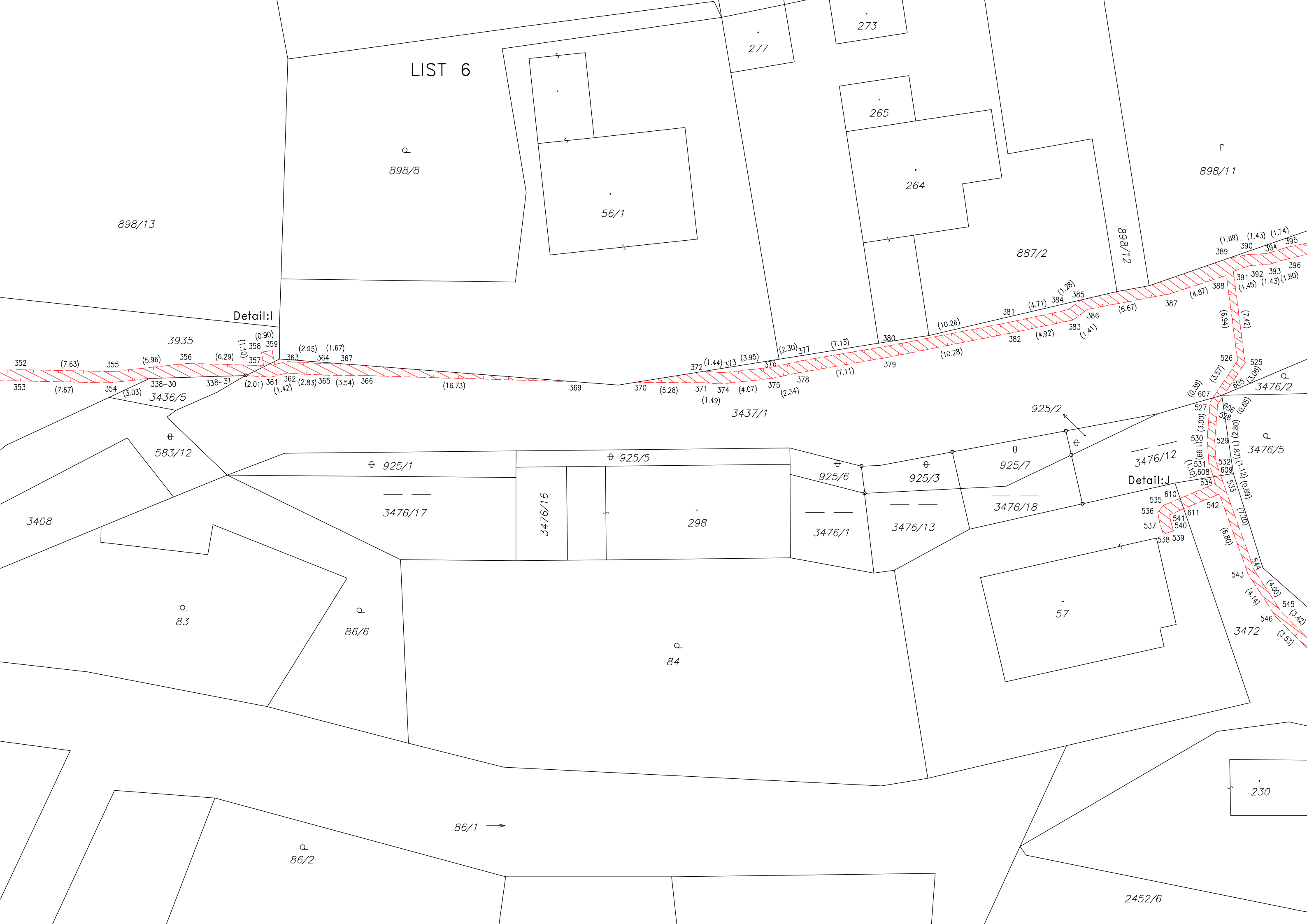
65/1

3404/5

51



LIST 6



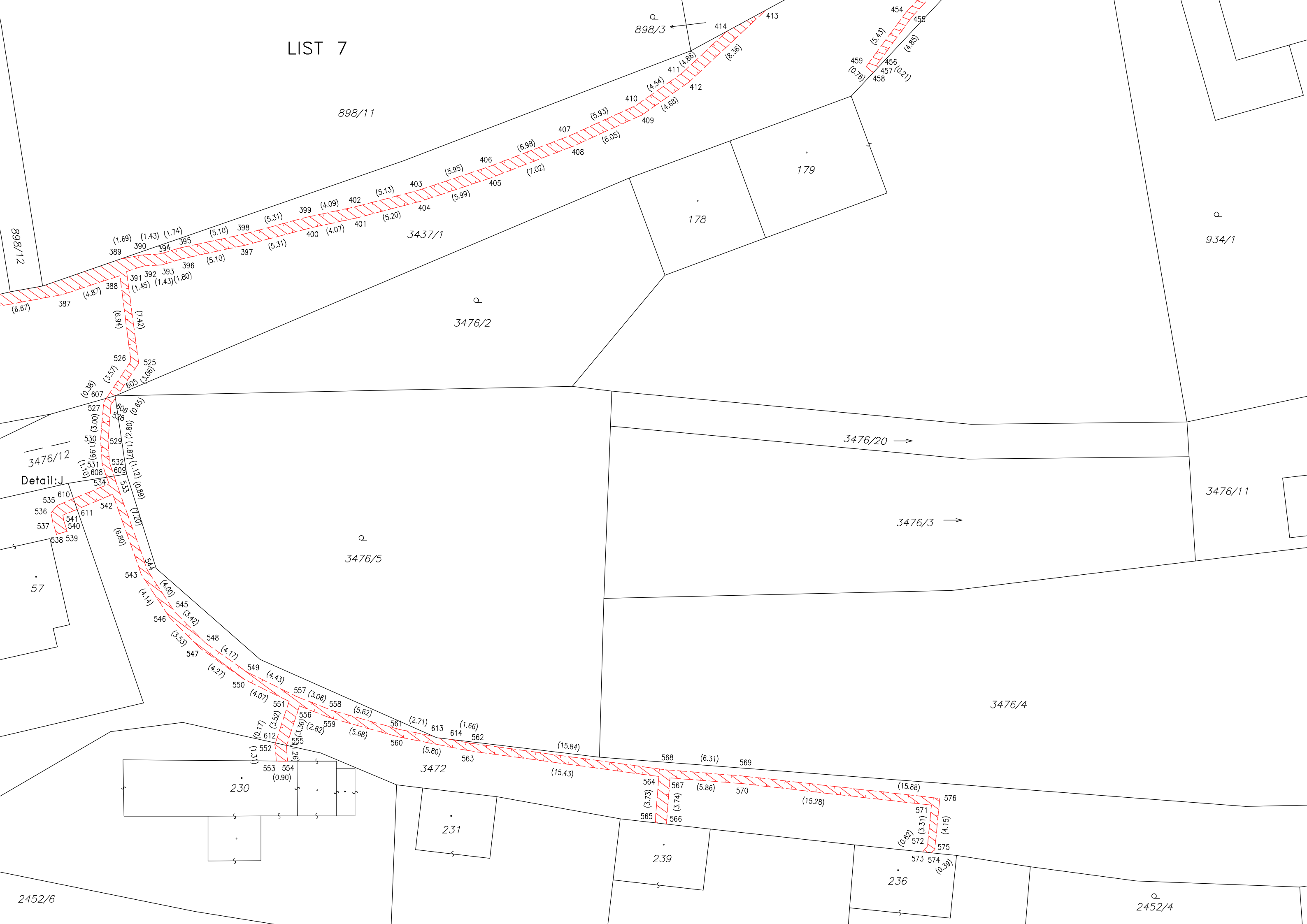
Detail:I

Detail:J

86/1 →

2452/6

LIST 7



898/11

898/3

898/12

3437/1

3476/2

3476/12

Detail: J

57

3476/5

3476/20

3476/3

3476/11

3476/4

3472

230

231

239

236

2452/6

2452/4

179

178

934/1

389 (1.69) 390 (1.43) 394 (1.74) 395 (5.10) 398 (5.31) 399 (4.09) 402 (5.13) 403 (5.95) 406 (6.98) 407 (5.93) 410 (4.54) 411 (4.88) 412 (8.36) 413 (4.85) 454 (5.43) 456 (4.85) 457 (0.21) 458 (0.76)

387 (6.67) 388 (4.87) 391 (1.45) 392 (1.43) 393 (1.80) 396 (5.10) 397 (5.31) 400 (4.07) 401 (5.20) 404 (5.99) 405 (7.02) 408 (6.05) 409 (4.88) 412 (8.36) 413 (4.85) 454 (5.43) 456 (4.85) 457 (0.21) 458 (0.76)

526 (3.57) 525 (3.06) 605 (0.607) 527 (3.00) 528 (0.87) 529 (1.87) 530 (1.99) 531 (1.10) 532 (0.608) 533 (0.98) 534 (1.70) 542 (0.80) 543 (4.00) 544 (4.14) 545 (3.42) 548 (4.17) 549 (4.43) 550 (4.07) 551 (4.43) 557 (3.06) 558 (5.62) 561 (2.71) 613 (1.66) 562 (1.66) 563 (15.84) 564 (3.73) 565 (3.74) 566 (3.74) 567 (5.86) 570 (15.28) 576 (15.88) 571 (3.31) 572 (0.62) 575 (4.15) 573 (0.39) 574 (0.39)

535 610 536 611 537 541 540 538 539 542 (1.70) 543 (4.00) 544 (4.14) 545 (3.42) 548 (4.17) 549 (4.43) 550 (4.07) 551 (4.43) 557 (3.06) 558 (5.62) 561 (2.71) 613 (1.66) 562 (1.66) 563 (15.84) 564 (3.73) 565 (3.74) 566 (3.74) 567 (5.86) 570 (15.28) 576 (15.88) 571 (3.31) 572 (0.62) 575 (4.15) 573 (0.39) 574 (0.39)

535 610 536 611 537 541 540 538 539 542 (1.70) 543 (4.00) 544 (4.14) 545 (3.42) 548 (4.17) 549 (4.43) 550 (4.07) 551 (4.43) 557 (3.06) 558 (5.62) 561 (2.71) 613 (1.66) 562 (1.66) 563 (15.84) 564 (3.73) 565 (3.74) 566 (3.74) 567 (5.86) 570 (15.28) 576 (15.88) 571 (3.31) 572 (0.62) 575 (4.15) 573 (0.39) 574 (0.39)

535 610 536 611 537 541 540 538 539 542 (1.70) 543 (4.00) 544 (4.14) 545 (3.42) 548 (4.17) 549 (4.43) 550 (4.07) 551 (4.43) 557 (3.06) 558 (5.62) 561 (2.71) 613 (1.66) 562 (1.66) 563 (15.84) 564 (3.73) 565 (3.74) 566 (3.74) 567 (5.86) 570 (15.28) 576 (15.88) 571 (3.31) 572 (0.62) 575 (4.15) 573 (0.39) 574 (0.39)

535 610 536 611 537 541 540 538 539 542 (1.70) 543 (4.00) 544 (4.14) 545 (3.42) 548 (4.17) 549 (4.43) 550 (4.07) 551 (4.43) 557 (3.06) 558 (5.62) 561 (2.71) 613 (1.66) 562 (1.66) 563 (15.84) 564 (3.73) 565 (3.74) 566 (3.74) 567 (5.86) 570 (15.28) 576 (15.88) 571 (3.31) 572 (0.62) 575 (4.15) 573 (0.39) 574 (0.39)

535 610 536 611 537 541 540 538 539 542 (1.70) 543 (4.00) 544 (4.14) 545 (3.42) 548 (4.17) 549 (4.43) 550 (4.07) 551 (4.43) 557 (3.06) 558 (5.62) 561 (2.71) 613 (1.66) 562 (1.66) 563 (15.84) 564 (3.73) 565 (3.74) 566 (3.74) 567 (5.86) 570 (15.28) 576 (15.88) 571 (3.31) 572 (0.62) 575 (4.15) 573 (0.39) 574 (0.39)

LIST 8



LIST 9

