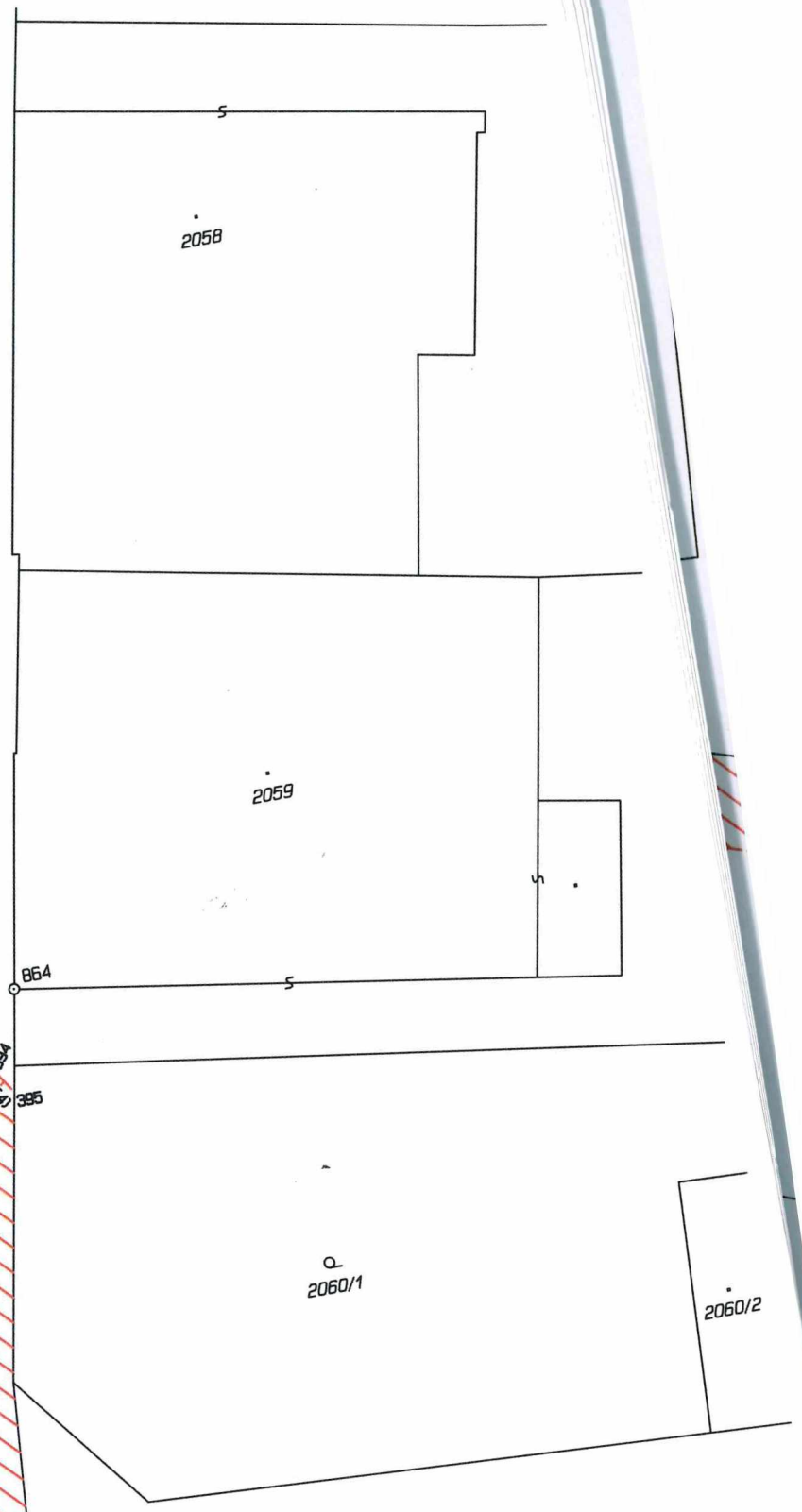
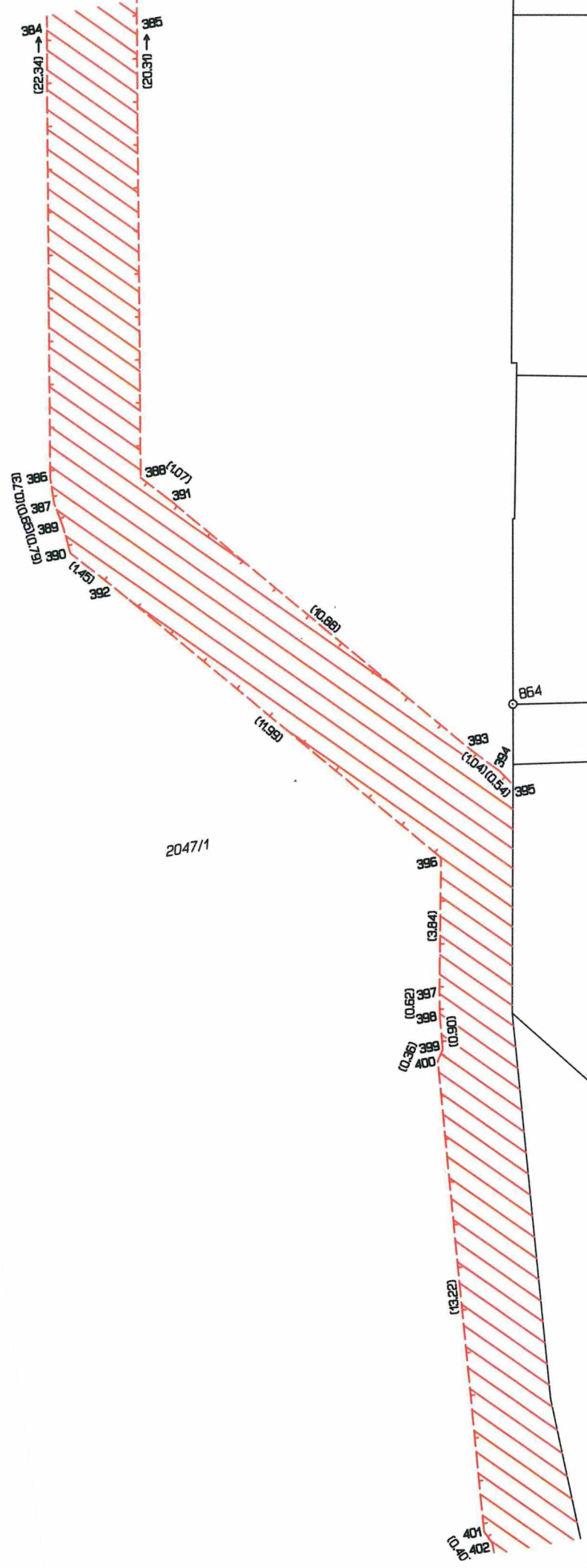


Q
2057/1



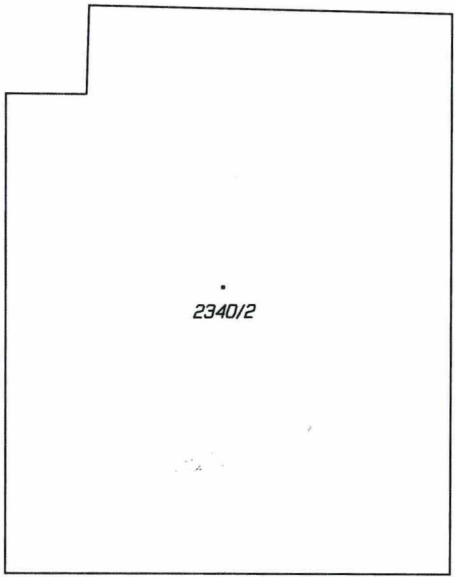
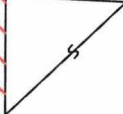
2047/1

2136

list 8.33

2136

401
402



2340/2

2047/1

284/5

2339/1

403

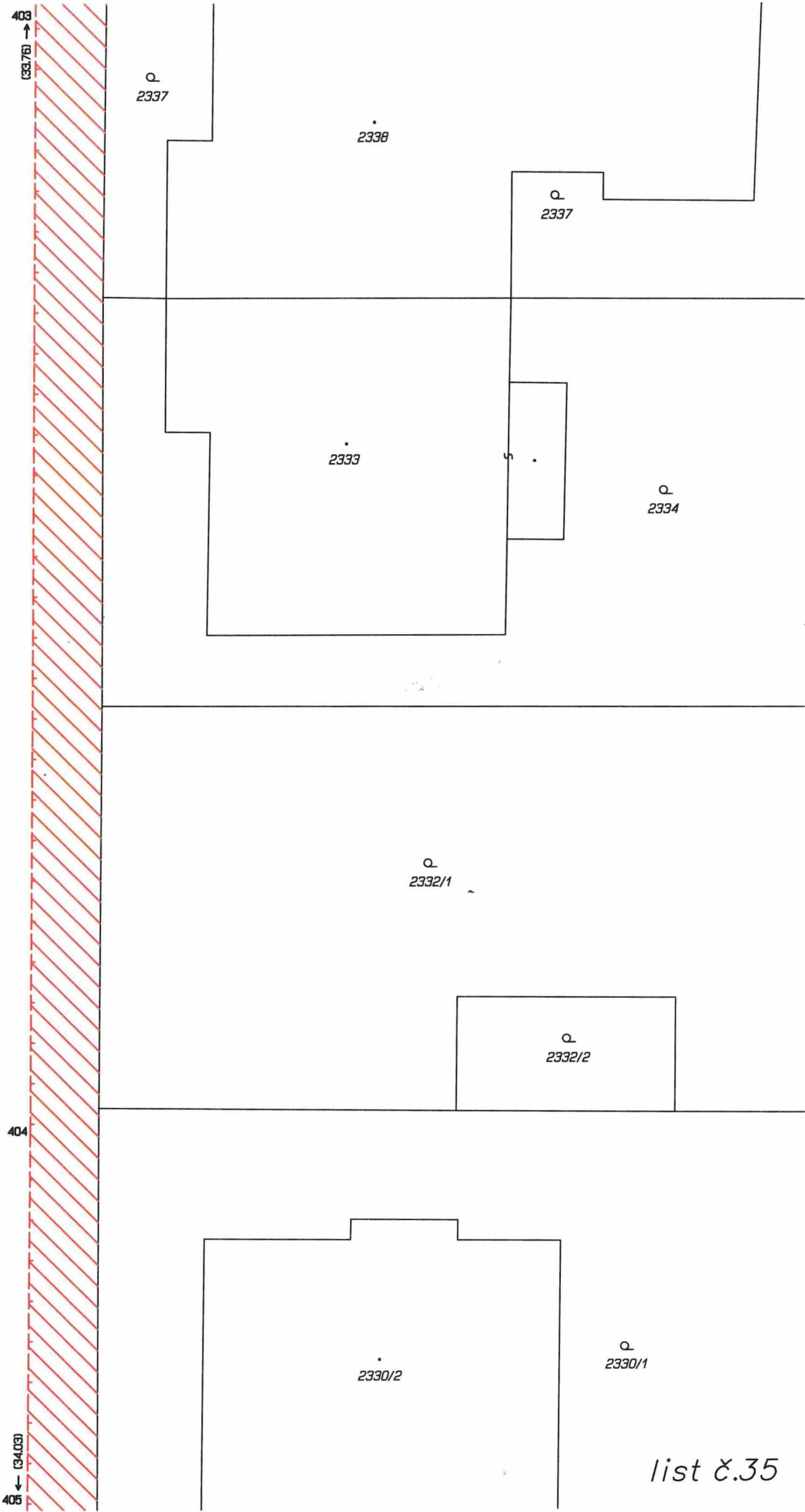
2337

2338

2337

404

list č.34



2047/1

list 8.35

404
↑ (34,08)

2330/2

Q
2330/1

2329/2

Q
2329/1

2326

Q
2327/1

2327/2

863

2047/1

206-1

(0,64)
406
408

(3,47)

405

407

(2,73)

(4,34)

(4,48)

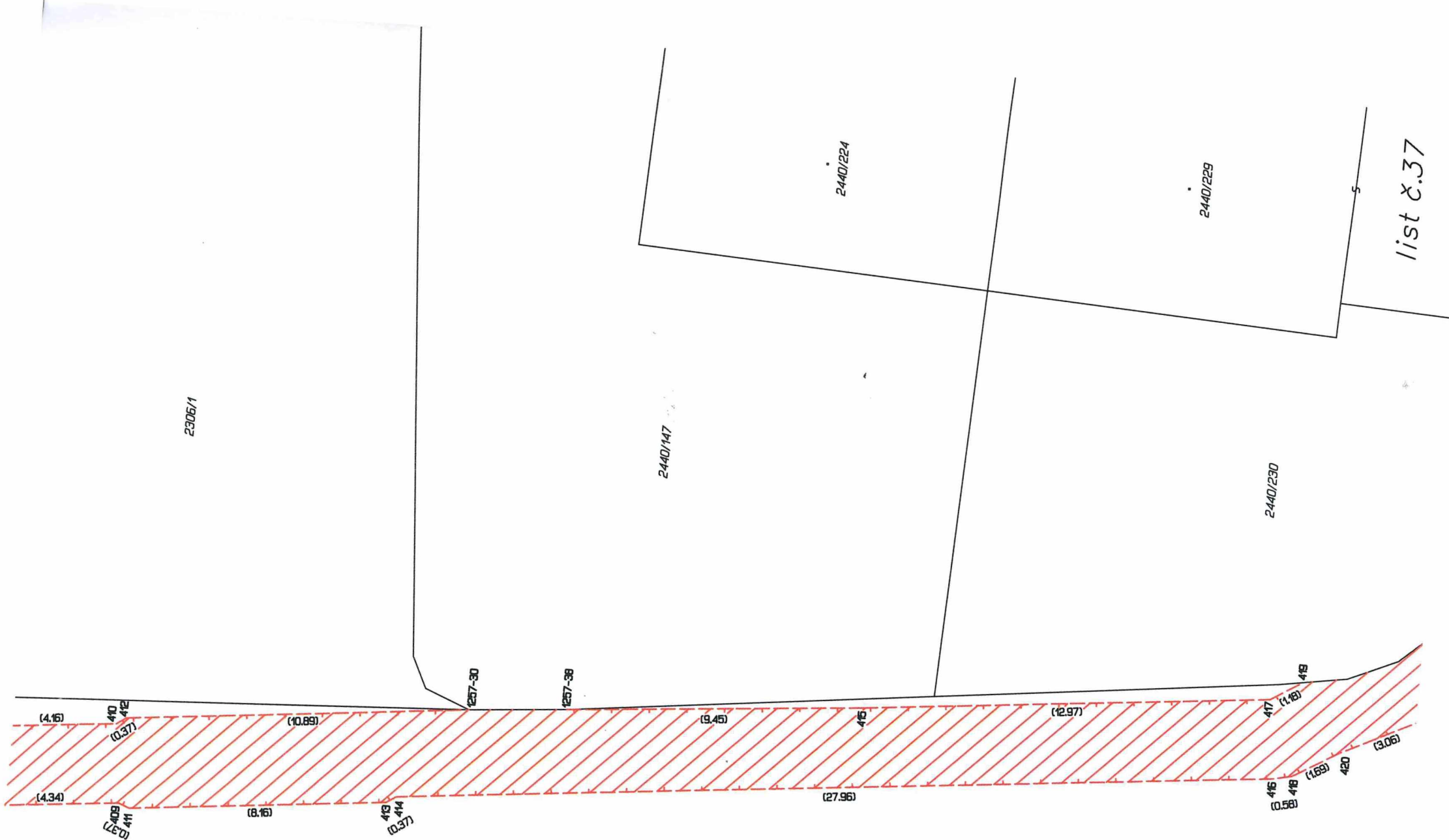
(0,37)
409
411

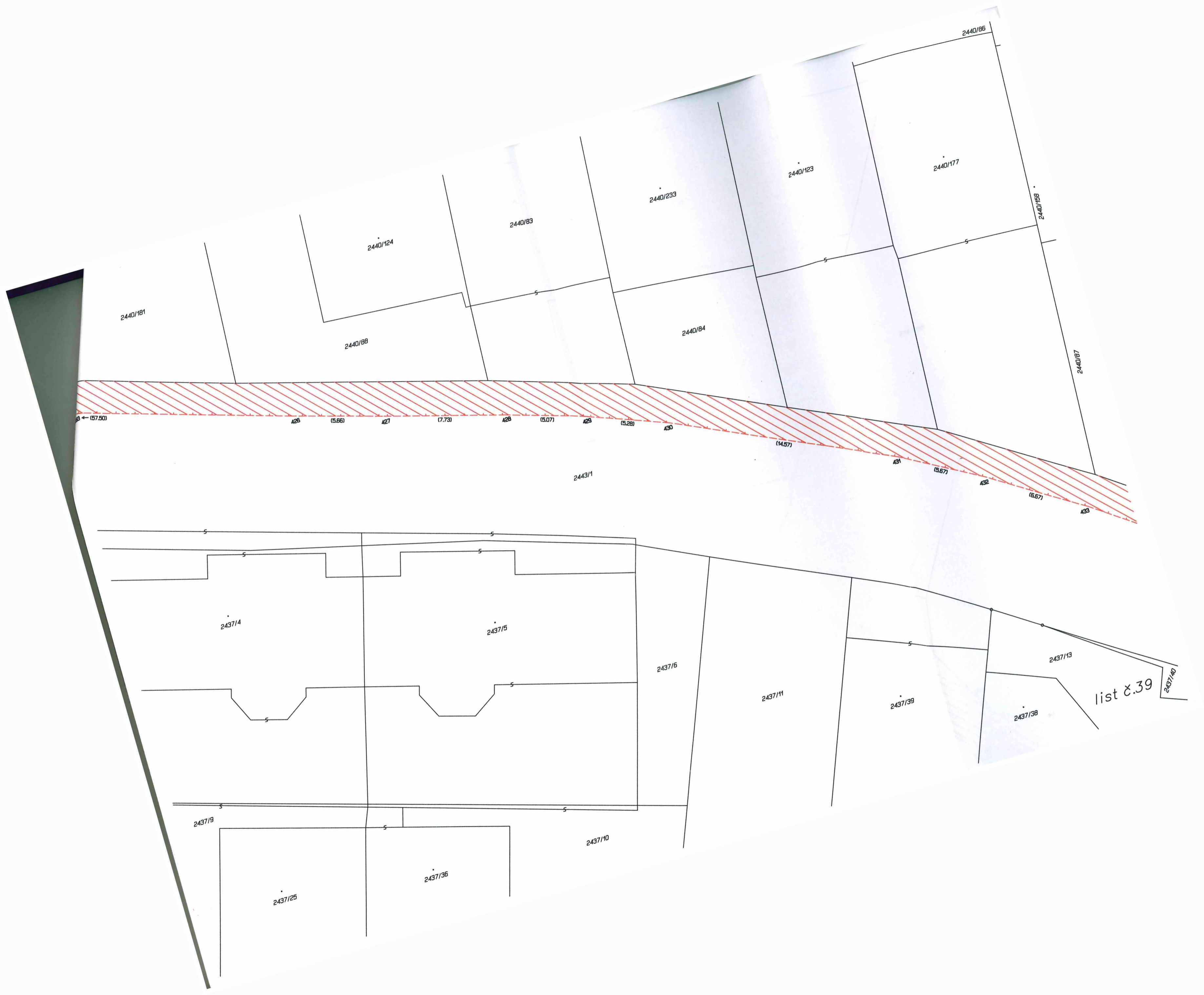
(0,37)

410
412

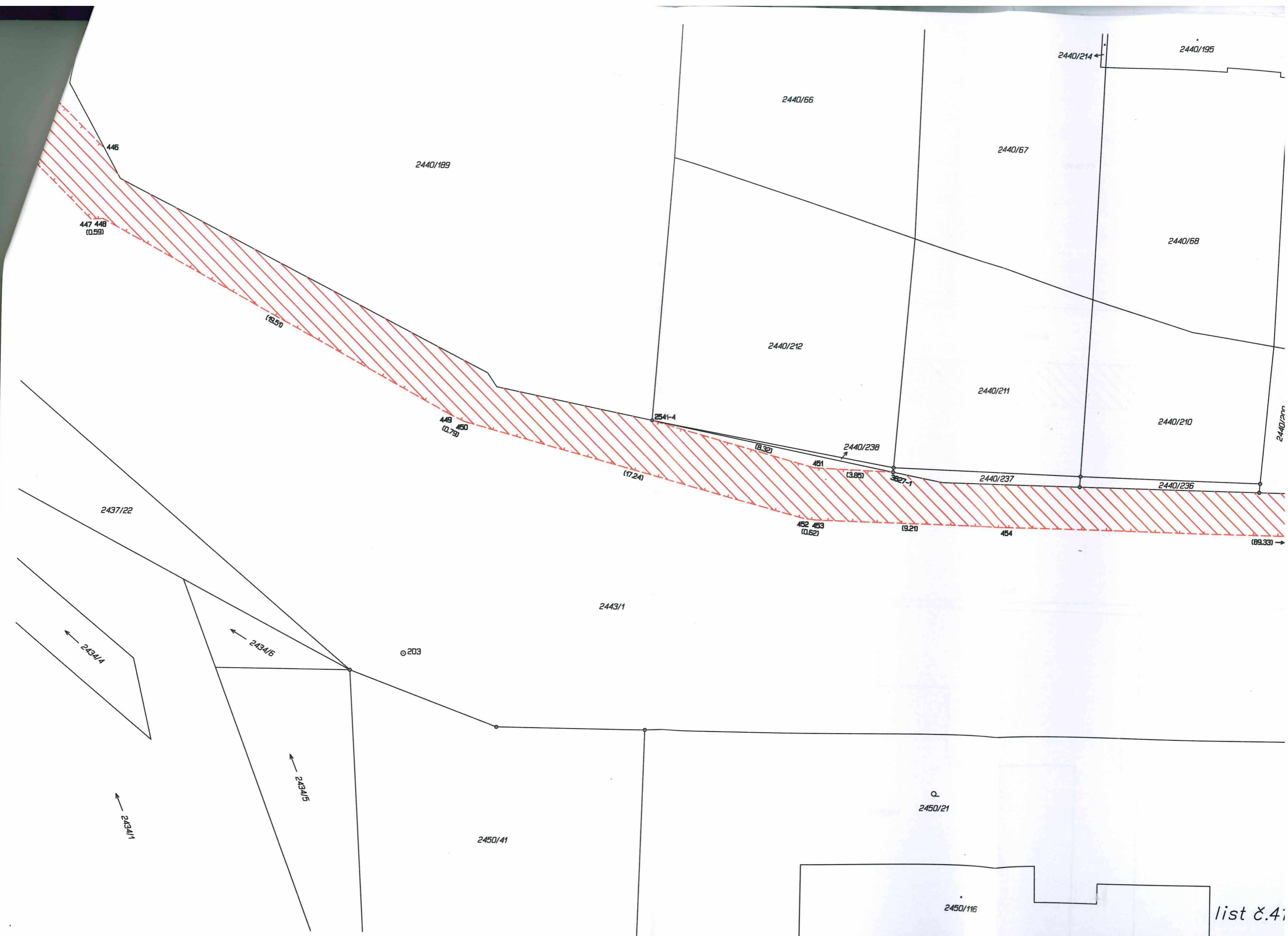
2306/1

list č.36

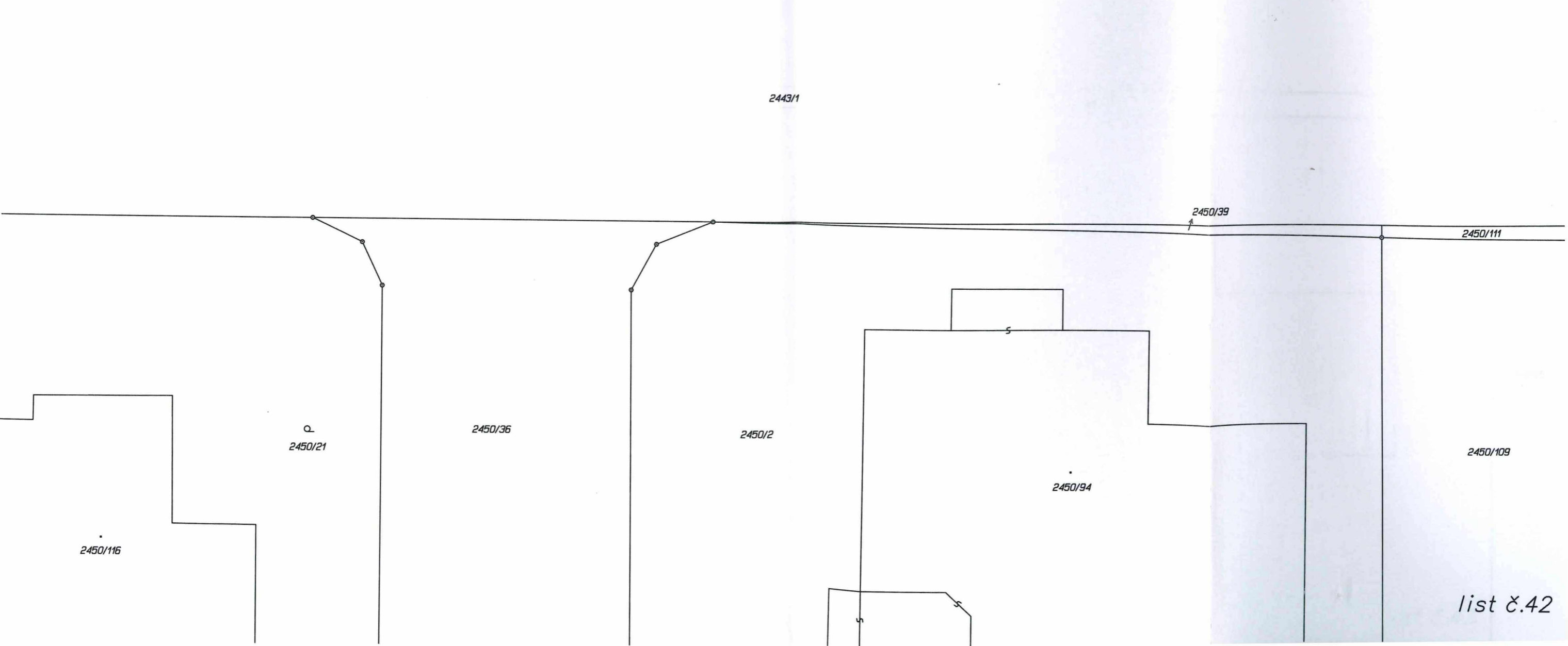
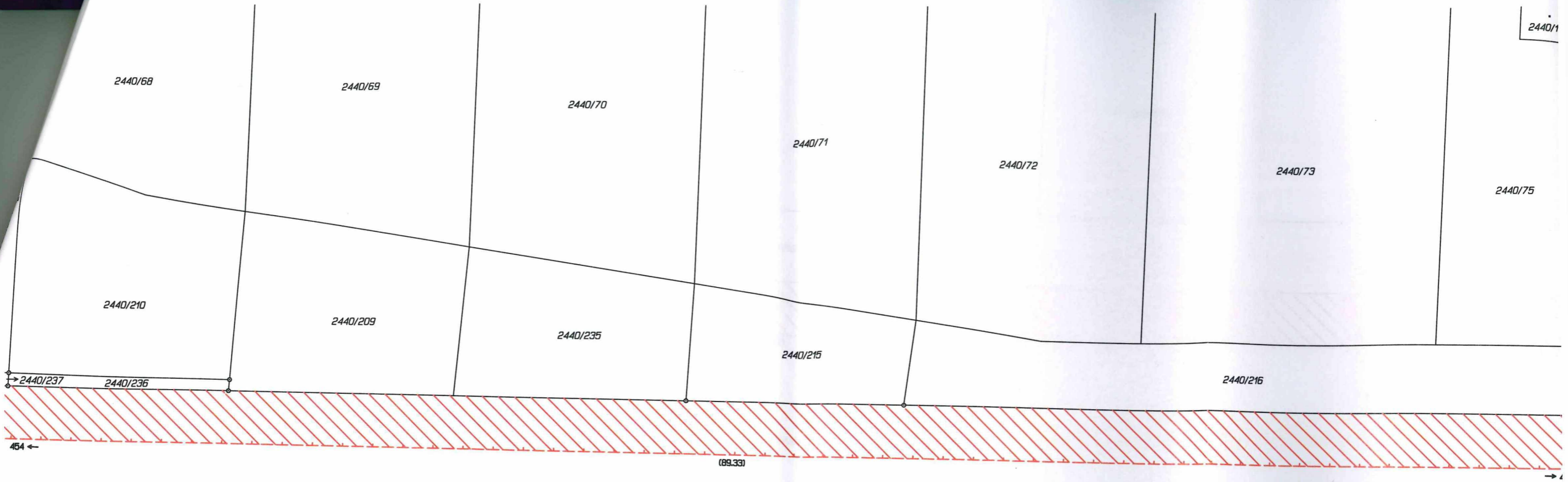




list č.39



list 8.4:



2440/75

2440/76

2440/77

2440/78

2440/79

2440/80

2440/8

2440/216

454 ← (89.33)

455

(61.12) -

2443/1

2450/111

2450/112

2450/113

2450/114

2450/3

Q.
2450/4

2450/108

2450/98

2450/109

2450/3

2450/73

2450/5

list č.43