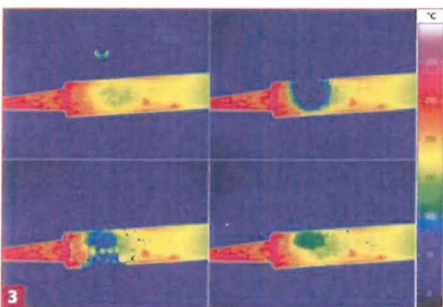
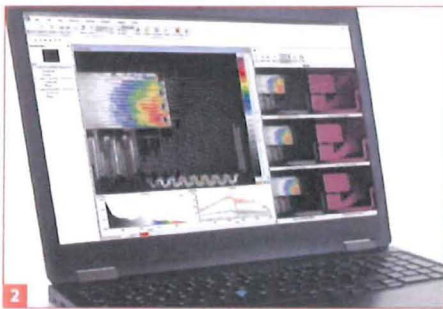


ImageIR[®] 9400

High-performance Thermography Camera



- 1) ImageIR[®] 9400 with interchangeable lenses from InfraTec
- 2) Lock-in thermography of an electronic device with the thermographic software IRBIS[®] 3 active
- 3) Impact of a drop of water on a soldering iron, recorded with high-speed mode

INFRA^{TEC}.

Europe's leading specialist for infrared sensors and measurement technology

- Cooled FPA photon detector with (1,280 × 1,024) IR pixels
- Opto-mechanical MicroScan with (2,560 × 2,048) IR pixels
- Available with high-speed mode thanks to binning technology
- Snapshot detector, integrated trigger interface
- Thermal resolution up to 0.02 K
- Extremely short integration times in the microsecond range
- Pixel size with microscopic lens up to 1.3 μm
- Made in Germany



www.InfraTec.eu

www.InfraTec-infrared.com

Ing. Václav
Straka

Digitálně podepsal
Ing. Václav Straka
Datum: 2019.06.17
14:18:20 +02'00'

NEW



Spectral range	(2.0 ... 5.5) μm or (3.6 ... 4.9) μm
Pitch	10 μm
Detector	InSb
Detector format (IR pixels)	(1,280 \times 1,024)
Image format with opto-mechanical Micro-Scan (IR pixels)	(2,560 \times 2,048)
Image acquisition	Snapshot
Readout mode	ITR/IWR
Aperture ratio	f/2.2 or f/3.0
Detector cooling	Stirling cooler
Temperature measuring range	(-40 ... 1,500) $^{\circ}\text{C}$, up to 2,000 $^{\circ}\text{C}^*$
Measurement accuracy	$\pm 1^{\circ}\text{C}$ or $\pm 1\%$
Temperature resolution @ 30 $^{\circ}\text{C}$	Up to 0.03 K / up to 0.02 K in high-speed mode
Frame rate (full / half / quarter / sub frame)*	Up to 180 / 342 / 622 / 2,601 Hz; high-speed mode: up to 622 / 1,053 / 1,615 / 3,343 Hz
Window mode	Yes
Focus	Manually, motorised or automatically*
Dynamic range	Up to 16 bit*
Integration time	(1 ... 20,000) μs
Rotating filter wheel*	Up to 5 positions
Rotating aperture wheel*	Up to 5 positions
Interfaces	10 GigE, HDMI*, GigE**, CAMLink**
Trigger	3 IN / 2 OUT, TTL
Analogue signals*, IRIG-B*	3 IN / 2 OUT, yes
Tripod adapter	1/4" and 3/8" photo thread, 2 \times M5
Power supply	24 V DC, wide-range power supply (100 ... 240) V AC
Storage and operation temperature	(-40 ... 70) $^{\circ}\text{C}$, (-20 ... 50) $^{\circ}\text{C}^*$
Protection degree	IP54, IEC 60529
Dimensions; weight	(241 \times 123 \times 160) mm; 4.3 kg (without lens)
Further functions	High-speed mode, Multi Integration Time**
Analysis and evaluation software	IRBIS [®] 3, IRBIS [®] 3 view, IRBIS [®] 3 plus*, IRBIS [®] 3 professional*, IRBIS [®] 3 control*, IRBIS [®] 3 online*, IRBIS [®] 3 process*, IRBIS [®] 3 active*, IRBIS [®] 3 mosaic*, IRBIS [®] 3 vision*

* Depending on model, ** expectedly available in July 2019

To analyse the thermal behavior of objects and processes from a wide variety of perspectives InfraTec introduces Imager[®] 9400. The camera is equipped with a new generation cooled focal-plane array photon detector that provides a format of (1,280 \times 1,024) IR pixels. Besides the standard mode users can choose a high-speed mode utilising binning technology. Due to a reduced number of pixels but the same field of view (FOV) this enables very high frame rates up to 622 Hz and an excellent thermal resolution at the same time.

Imager[®] 9400 was developed for demanding operations in research and development, non-destructive testing and process monitoring. Its modular structure, which consists of optical, detector and interface modules, makes it easily adaptable to the respective application.

An integrated trigger interface guarantees a repeatable high-precision triggering of quick procedures. Multiple configurable digital in- and outputs serve as control ports for the camera or as generator of control signals for external devices. The optical channel consists of exchangeable infrared lens systems as well as application-specific apertures, filters and optical elements. The exchangeable radiometric precision lenses of the Imager[®] 9400 can be combined with a motorised focus unit, which is operated from the camera's application software. It allows quick, precise and remotely controllable motorised focusing.

Lenses	Focal length (mm)	FOV ($^{\circ}$)	IFOV (mrad)
Standard lens	25	(29 \times 23)	0.4
Telephoto lens	50	(15 \times 12)	0.2
Telephoto lens	100	(7.3 \times 5.9)	0.1
Telephoto lens	200	(3.7 \times 2.9)	0.05

Macro and microscopic lenses	Object distance (mm)	Object size (mm)	Pixel size (μm)
Close-up for telephoto lens 50 mm	300	(77 \times 61)	60
Close-up for telephoto lens 100 mm	500	(64 \times 51)	50
Microscopic lens M=1.0x	40	(13 \times 10)	10
Microscopic lens M=8.0x	14	(1.6 \times 1.3)	1.3

Headquarters

InfraTec GmbH
Infrarotsensorik und Messtechnik
 Gostritzer Str. 61 – 63
 01217 Dresden / GERMANY
 Phone +49 351 871-8630
 Fax +49 351 871-8727
 E-mail thermo@InfraTec.de

USA office

InfraTec Infrared LLC
 5048 Tennyson Pkwy.
 Plano TX 75024 / USA
 Phone +1 844-226-3722 (toll free)
 E-mail thermo@InfraTec-infrared.com

© InfraTec 02/2019. All stated product names and trademarks remain in property of their respective owners. | Design, specification and technical progress subject to change without prior notice.