


 <p>CZECH REPUBLIC DEVELOPMENT COOPERATION</p> <p><i>Expert Request Form</i></p>		Request number: (Allocated by the Czech Development Agency)
Title: Research of Karst Caves		
Expected field of expertise: Research		
Partner country: Georgia		Region/town/locality: Ambrolauri Municipality, Racha, Georgia
Expected Start and End Dates: From 1.08 Until 11.08		Total amount of days in the field: 10 days
Expected Czech ODA financial contribution (EUR): Up to 12.000 euro (approx.)		Estimated co-financing from the partner institution (financial contribution in EUR/ in kind in detail) In-kind contribution - Active involvement of Agency of Protected Areas' staff
<p>Applicant / Partner Institution: <i>Name, type, mail and web address of partner institution; name and position of responsible manager/contact person, phone, fax, e-mail.</i></p> <p>The Agency of Protected Areas (APA) Address: 6 Gulua str, Tbilisi, 0114, Georgia Website: www.apa.gov.ge</p> <p>  Head of International Relations and Project Management Division, Agency of Protected Areas. Email:  Tel:  </p>		
CONTEXT AND RATIONALE		
<p>Context: <i>Problem analysis. Please explain current situation and why the expert is requested (what is his/her added value).</i></p> <p>The area with high ecological value, located in the southern part of Ambrolauri Municipality, Racha has great tourism potential and is characterized with geomorphological landscape presented on rare limestone relief and is known by karst caves, wells and limestone relief form.</p>		

Above-mentioned territory could be granted the status of the protected area, in this regard to avoid negative impact on biodiversity and create new protected area there is necessity of research. Unfortunately, APA does not have an appropriate equipment and sufficient financial resources to hire international experts with relevant experience who would research case.

Expected outputs and outcomes:

Please, explain, what is expected from the expert in detail (elaboration of analysis, seminar, forum, etc.) and when and how those outcomes will be used.

Output: scientific evidence to create new protected area; researching the biodiversity of the selected area, conducting geological and cave studies, preparing scientific evidence and the related documentation

Outcome: nature conservation, eco-tourism and socio-economic conditions development.

Role of the applicant/partner organisation and roles of other key partners:

Please describe briefly the roles and responsibilities of key project stakeholders and their relation towards the expert (towards his/her work).

The Agency of Protected Areas (APA) - central office as well as administration will participate in research, assist and coordinate activities.

Local municipality and people will ensure effective implementation upon their capacities.

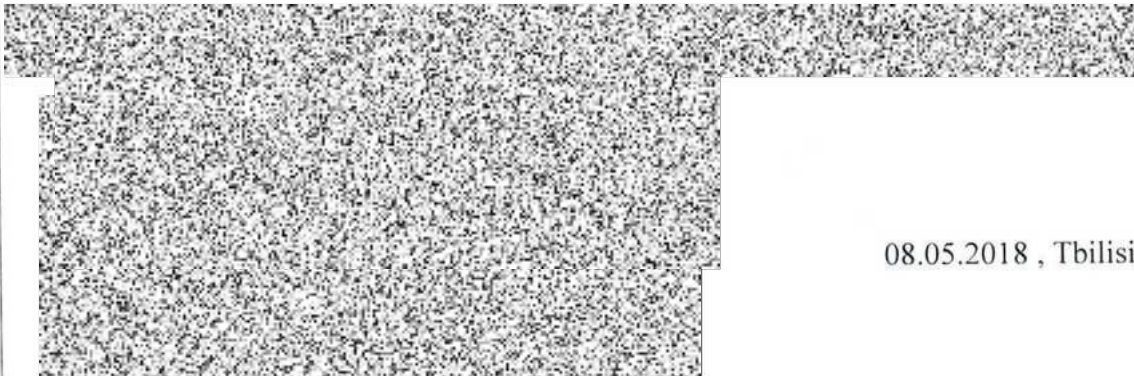
Complementarity:

Analysis of other relevant development interventions executed by the government (or) in co-operation with other donors, complementarity of the requested intervention with activities carried out so far.

The idea is in total complementarity with the mission of Agency of Protected Areas to establish and develop new protected areas. Herewith, our main objective is to protect and conserve nature, maintain unique eco-systems.

Date and Signature:

Place, date, name of authorised person within applicant institution and his/her signature, stamp.



08.05.2018 , Tbilisi, Georgia