

EUN-ME AHN COMPANY

« Let me change your name »

TECHNICAL RIDER

RUNNING TIME : 75mn without interval

6 dancers, 1 Director Choreographer, 1 Technical Director/Lighting,
1 Stage Manager and 1 Tour.manager

GENERAL CONDITIONS

This technical rider forms an integral part of the contract.

A signed and initialed copy by the organizer shall be returned together with the contract.

Technical set up (sound, lightings, stage...), as well as its good functioning are under the responsibility of the organizer.

The organizer commits itself to provide the venue in full working order. The venue will imperatively have to be used in « seated » configuration and shall be heated to maintain a constant ambient temperature of 22°C from the arrival of our technical staff.

Any problem or obstacle raised by the hereby rider, shall we be informed as soon as possible in order to find a solution together.

All adaptation and modification will be subject to a written agreement between the parties.

Thank you for sending us as soon as possible :

- The technical rider of your venue + ground and cutting planes
- The layout plan of your sound diffusion system
- The total audience capacity of your venue

STAGE

Staff required : 1 stage manager, 2 stage hands, 1 Fly men (cf. schedule)

We will transmit you our plots upon the reception of your technical rider and ground and cutting planes at 1/50th.

STAGE

Stage must be in wood, stable, solidly built (resistance 500kg / m²), leveled on all its surface, perfectly flat, correctly aligned with the house, and clean. It has to lay on a hard floor.. 2 access stairways on both sides of stage, and imperative circulation stage left/right. A low intensity runway lighting for circulation backstage is necessary.

Working lighs :

Make sure of the correct operation of set « services » and lighting of the set access working area for unloading and reloading.

Ideal dimensions :

Proscenium opening :	minimum 12m
Depth :	minimum 12m
Height under the grid :	minimum 07m
Height at proscenium :	minimum 06m
Wall to wall opening :	minimum 16m

Equipment to be provided by the organizer :

- 1 Front stage curtain
- 5 Black borders
- 10 Black legs
- 1 cyclorama
- 1 white dance mat covering all stage laid on « expo » type carpeting.
- 2 side panel of legs backstage in case there would be masking
- Black carpet backstage left/right stage and back for the circulation of the dancers
- 10 chairs distributed at left/right and back of stage as well as 2 tables

Also provide a cleaning kit, vacuum cleaner, buckets, mops and an auto cleaner

LIGHTINGS

Staff required : 1 lighting manager and 3 electricians (cf. schedule)

A pre-implantation of the lighting plot will be asked especially the direct channels for automatic projectors, the power supply for the follow spots and the filtering of horiziodes.

Forsee 48 circuits of 3KW

Equipment to be provided by the organizer :

1 lighting board capable of recording cues and sequencer. 256 channels required.

34 x Asymetric Floods
21 x PC 1KW
22 x PC 2KW
30 x Profiles 1KW 13/42°
09 x PAR 64 CP61
08 x PAR 64 CP60

Filters : Lee filter : 124 – 119 – 117 – 719 – 201 – 113 - 709
Rosco : 132 – 119

Extensions, powerstrips, alu tape (black) in adequate quantity.

Forsee a table with the Lighting control desk in the house for lighting corrections.

Also provide a tower or a lift for the lighting adjustment between 8 and 10m.

SOUND

Staff required : 1 sound technician (cf. shedule)

A pre-implantation of the sound diffusion will be asked.

To be provided by the organizer :

FOH :

This show requires an homogenous system in multi-amplification ensuring a good diffusion in all place of the house and respecting an important dynamic. The power will of course vary demending of the venue dimension. The show being based more on the accoustic quality rather than on the power, in case of great house depth or balconies, feel free to work in délayée multi-diffusion.

Recommended material :

- C.HEIL / MTD 115 + sub MTD 118/218 + front-fills MTD 112/108
- or equivalent

No matter the diffusion brand, it is necessary that the used amplification is coherent (so not totally unpaired) and of a good quality, and all the filters (or processors) required by the use of the systems are there.

If the material you are using is not part of this list, please contact our sound technician to find a homogenous diffusion solution and a reasonable but sufficient quantity of material. Please be aware that in any case, coaxial system will be preferred.

We will be aware of the organizer and material provider that silence is necessary on stage. So depending on the ambient noise made by the amplification (fans) we ask you to place it far enough in order to avoid any disturbances.

STAGE MONITORS :

2 speakers type Heil-acoustics XT115 + processors XT115+ amplifiers + cabling + stands for the whole or equivalent

4 speakers type Heil-acoustics MTD112 + processors MTD112+ amplifiers + cabling + hanging system or stands for the whole or equivalent system.

DESK AND PROCESSING :

1 digital desk type YAMAHA
1 professional CD-players with auto-cue.

PATCH OUT :

Line-out 1-2 : FOH.
Line-out 3 : Sub FOH in.
Line-out 4-5 : first plan stage monitors
Line-out 6-7 : second plan stage monitors
Line-out 8-9 : Back of stage.

MISCELLANEOUS :

1 HF Hand mic
1 Intercom station Clear-com with 4 sub-stations (head sets and mics)
1 Sound, 1 Lights, 2 Stage (left and right)

DRESSING ROOMS - COSTUMES

Staff required : 1 Dresser (cf. schedule)

The organizer shall provide 6 dressing rooms for 9 dancers, 1 Director Choreographer and 1 for Production / Technical staff.

Artists dressing rooms have to be equipped with the following equipment :

Make up table, chairs, mirror on stand and hangers for costumes, paper basket, ashtray, electric plug (16A), heating, toilets and showers.

- 1 ironing board - 1 iron
- 1 washing machine and 1 dryer
- 4 mobile costume racks

Forsee mineral water bottles (without gas) in great quantity, coffee, tea, fresh and dry fruits, chocolate bars, ...

SECURITY

The smooth functioning of the show is placed under the responsibility of the ORGANIZER.

The house DIRECTION will ensure that no one will be present in the house or backstage during rehearsals, except authorised personnel.

During the performance, no one shall access backstage except the company and stage personnel.

After the performance, the DIRECTION will ensure to forbid the access to stage as well as backstage before our technical Director gives its authorization.

No visual or sound recording is authorized without prior agreement.

Flashes will be forbidden in any case.

TECHNICAL CONTACTS

TECHNICAL DIRECTOR

Jimmy KIM

Mob : +82 (0)10 3317 8862

Email : jeemong@hanmail.net

In to copies, on

THE PRODUCER

THE PROMOTER

"Let me change your name"

Technical Schedule

first day

Time	Designation	Stage Manager	Stagehand / Flyman	Light Manager	Electrician	Sound Manager	Dresser
9am - 1pm	Load in Setup Setup light Setup Sound	1	3	1	3	1	
2pm - 7pm	Con't light and focusing Con't sound and sound check Con't stage	1	3	1	3	1	1
8pm -11pm	Focusing Rehearsal	1	2	1	2	1	

second day

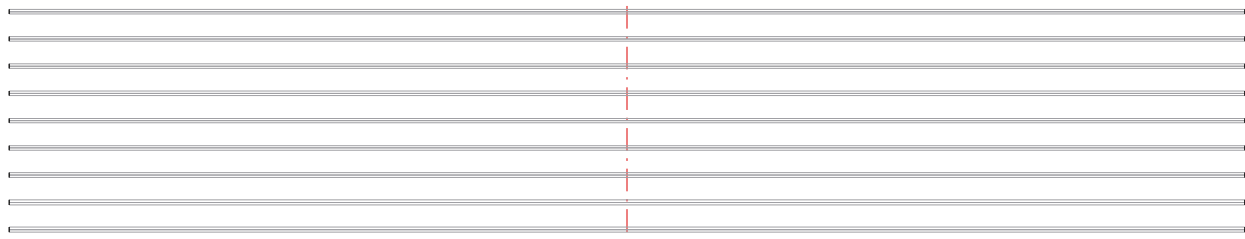
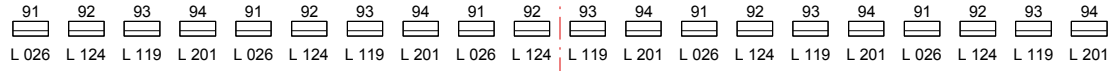
9am - 1pm	Focusing Plotting (if it's possible) Preparation dressing room Sound check	1	2	1	2	1	1
1pm - 2pm	Lunch						
2pm - 4pm	Plotting Sound rehearsal	1	1	1	1	1	1
4pm - 7pm	Generale Rehearsal	1	1	1	1	1	1
7pm - 7:30pm	Stage cleaning		1				
7:45pm 8pm 8:30pm	Pre-set Public opening Performance	1	1	1		1	1
10pm	Strike (2 hours)	1	2	1	3	1	1

LIGHT
"LET ME CHANGE YOUR NAME"

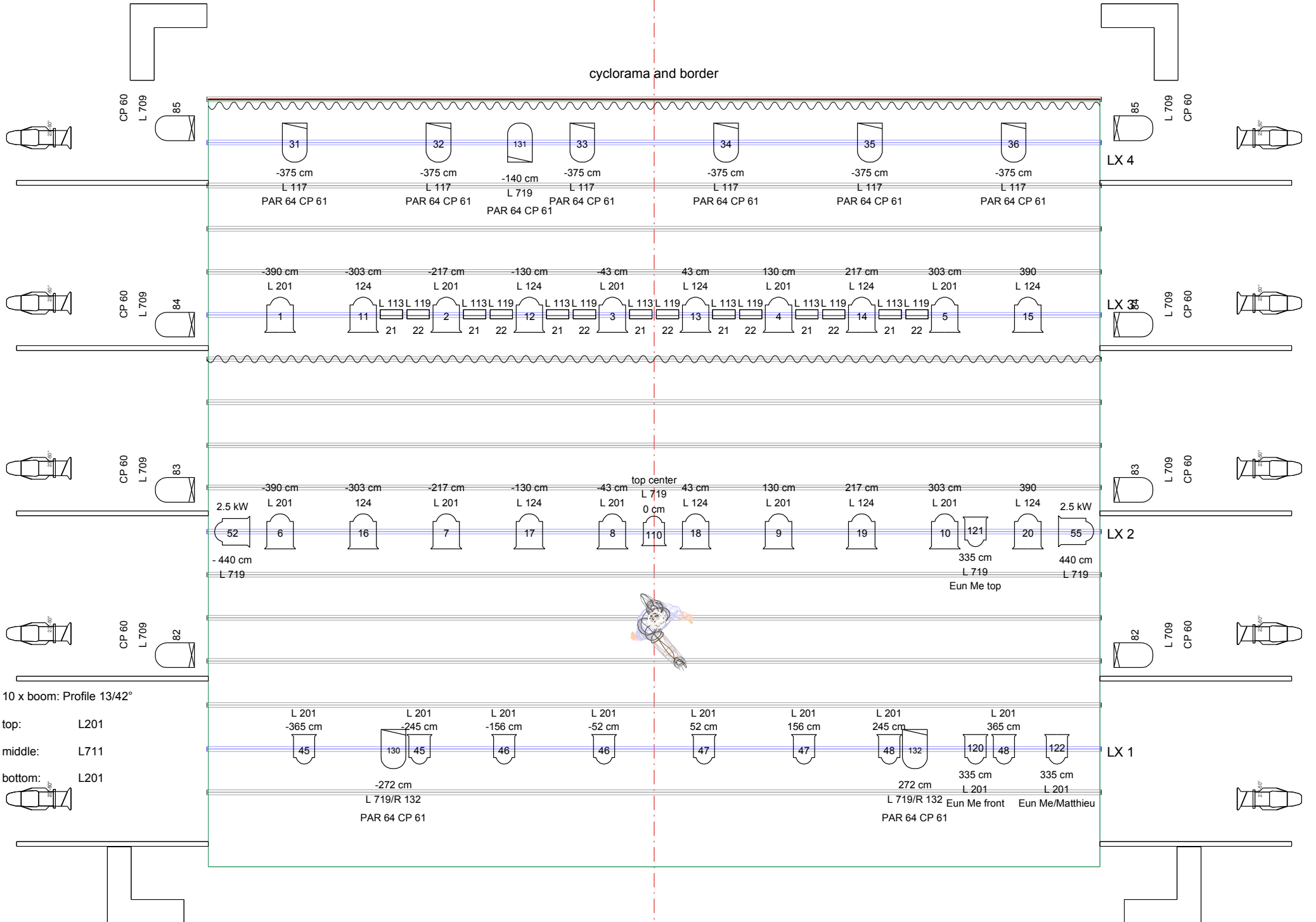
Dimmer	Channel	Designation	Filter	Dimmer	Channel	Designation	Filter	Dimmer	Channel	Designation	Filter
	1	1 x PC 2KW	L201 #119		49	NC			97	NC	
	2	1 x PC 2KW	L201 #119		50	NC			98	NC	
	3	1 x PC 2KW	L201 #119		51	NC			99	NC	
	4	1 x PC 2KW	L201 #119		52	1 x PC 2KW	L719 #119		100	NC	
	5	1 x PC 2KW	L201 #119		53	NC			101	NC	
	6	1 x PC 2KW	L201 #119		54	NC			102	NC	
	7	1 x PC 2KW	L201 #119		55	1 x PC 2KW	L719 #119		103	NC	
	8	1 x PC 2KW	L201 #119		56	NC			104	NC	
	9	1 x PC 2KW	L201 #119		57	NC			105	NC	
	10	1 x PC 2KW	L201 #119		58	NC			106	NC	
	11	1 x PC 2KW	L124 #119		59	NC			107	NC	
	12	1 x PC 2KW	L124 #119		60	2 x Profile 1KW	L201		108	NC	
	13	1 x PC 2KW	L124 #119		61	2 x Profile 1KW	L201		109	NC	
	14	1 x PC 2KW	L124 #119		62	2 x Profile 1KW	L201		110	1 x PC 1KW	L719 #132
	15	1 x PC 2KW	L124 #119		63	2 x Profile 1KW	L201		111	NC	
	16	1 x PC 2KW	L124 #119		64	2 x Profile 1KW	L201		112	NC	
	17	1 x PC 2KW	L124 #119		65	2 x Profile 1KW	L201		113	NC	
	18	1 x PC 2KW	L124 #119		66	2 x Profile 1KW	L201		114	1 x PC 1KW	L201 #132
	19	1 x PC 2KW	L124 #119		67	2 x Profile 1KW	L201		115	NC	
	20	1 x PC 2KW	L124 #119		68	2 x Profile 1KW	L201		116	NC	
	21	7 x Asymmetric flood	L113		69	2 x Profile 1KW	L201		117	NC	
	22	7 x Asymmetric flood	L119		70	2 x Profile 1KW	L711		118	NC	
	23	NC			71	2 x Profile 1KW	L711		119	NC	
	24	NC			72	2 x Profile 1KW	L711		120	1 x PC 1KW	L201 #132
	25	NC			73	2 x Profile 1KW	L711		121	1 x PC 1KW	L719 #132
	26	NC			74	2 x Profile 1KW	L711		122	1 x PC 1KW	L201 #201
	27	NC			75	NC			123	NC	
	28	NC			76	NC			124	NC	
	29	NC			77	NC			125	NC	
	30	NC			78	NC			126	NC	
	31	1 x PAR 64 CP61	L117		79	NC			127	NC	
	32	1 x PAR 64 CP61	L117		80	NC			128	NC	
	33	1 x PAR 64 CP61	L117		81	NC			129	NC	
	34	1 x PAR 64 CP61	L117		82	2 x PAR CP60	L709		130	1 x PAR 64 CP61	L719 #132
	35	1 x PAR 64 CP61	L117		83	2 x PAR CP60	L709		131	1 x PAR 64 CP61	L719
	36	1 x PAR 64 CP61	L117		84	2 x PAR CP60	L709		132	1 x PAR 64 CP61	L719 #132
	37	NC			85	2 x PAR CP60	L709		133	NC	
	38	NC			86	NC			134	NC	
	39	NC			87	NC			135	NC	
	40	NC			88	NC			136	NC	
	41	2 x PC 1KW	L201 #132		89	NC			137	NC	
	42	2 x PC 1KW	L201 #132		90	NC			138	NC	
	43	2 x PC 1KW	L201 #132		91	5 x Asymmetric Flood	L026		139	NC	
	44	2 x PC 1KW	L201 #132		92	5 x Asymmetric Flood	L124		140	NC	
	45	2 x PC 1KW	L201 #132		93	5 x Asymmetric Flood	L119		141	NC	
	46	2 x PC 1KW	L201 #132		94	5 x Asymmetric Flood	L201		142	NC	
	47	2 x PC 1KW	L201 #132		95	NC			143	NC	
	48	2 x PC 1KW	L201 #132		96	NC			144	NC	

Eun Me Ahn " Let Me Change Your Name "

20 x on the floor



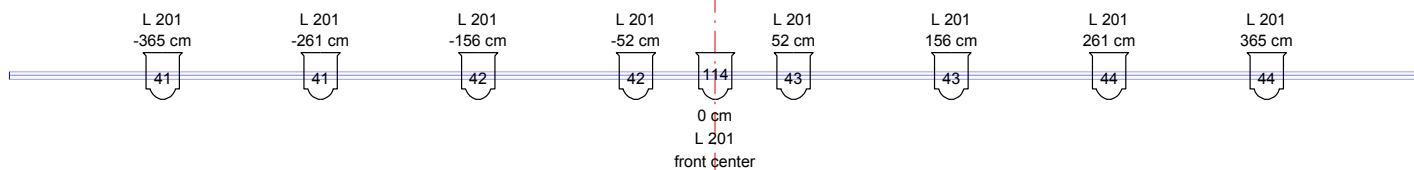
cyclorama and border



legende:

- 21 x 1 kW F, with barndoor and colorframe
- 20 x 2 kW F, with barndoor and colorframe
- 2 x 2.5 kW F, with colorframe
- 8 x PAR 64 CP 60, with colorframe
- 9 x PAR 64 CP 61, with colorframe
- 34 x 1 kW asym. flood, with colorframe
- 30 x profile 1 kW 13/42°

a lot of cables and electric plugin boxes!



CL