

## ANNEX 1

### Description of Services

Services will consist of three main work packages described below as A – C.

#### A. Study tour in France

To prepare proper providing the Services from SNCF in connection with the High Speed Line (hereinafter referred as to the “HSL”), the HSL management team and main subsystem experts of SZDC will have a study tour in France to get an overview about French High Speed rail network Design, Construction, Maintenance & Operation.

Program of the HSL Study tour will consists of following themes. Time schedule is subject to change. Study tour and presentation will be in French language translated to Czech by interpreter (SŽDC will ensure).

**First week** (target group of attendants: directors, project managers, economists):

1st day

Overall program management:

- Funding & profitability of HSL
- Investment & project management

2nd day

Visit HSL-Brittany:

- Travel HS train to Rennes
- Socio-Economical impact of HSL in Rennes city
- Transformation of station Hub area
- Connections to regional lines
- HSL Construction project presentation
- Visit CCR

3rd day

HSL operation:

- Operation organisation
- Business model components

International HSL projects:

- Morocco HSL
- South Korea HSL

Presentation of HSR program in Czech Republic for SNCF experts

- introducing to cooperation

4th day

Design contractualisation in France:

- Different Design steps before construction
- Scope of Feasibility and Preliminary studies in France
- Public consultation
- Design in different contractualisation scheme:
  - MOE as per TGV-Est, LGV-RR
  - PPPs: SEA/CNM

#### 5th day

##### Rolling Stock (Paris area):

- Different generation of existing RS
- TGV2020 development
- Foreign RS on French lines: ICE, Eurostar etc.
- RS maintenance concept
- Visit RS maintenance site

#### **Second week** (target group of attendants: projects managers, technical experts):

#### 1st day

##### Technical workshop – Design of HSL French solutions:

- Overall organisation of Design and Standards for HSL
- Alignment, Tunnels, Bridges, Track, Stations
- Catenary, Sub-stations, Signalling, Rolling Stock
- Maintenance concept (RAM)
- Environmental evaluation/protection
- Outline of Czech specific requirements

#### 2nd day

##### Visit HSL - to be specified:

- Travel HS train
- Socio-Economical impact of HSL in city
- Transformation of station Hub area
- Connections to regional lines
- HSL Construction project presentation
- Visit CCR

#### 3rd day

##### Technical workshop – Design of HSL French solutions:

- Part 2

#### 4th day

##### Visit HSL works (e.g. Massy, Paris area):

- Present HSL maintenance French concept & test train
- Visit maintenance works (night)

##### Travel Iris 320 (e.g. Paris area):

- Shift Paris-Est/Reims/CDG – to be specified

#### 5th day

##### Safety:

- Regulation authorities in place
- Organisation, Framework for HSL design

##### Visit Paris-Nord facilities:

- Paris Gare du Nord (Hub & Connection presentation)
- CNOF/COS (Central Traffic Centres)

## **B. Preliminary Design Manual workshops and support**

Main subject of cooperation is to produce Design Manual suitable for preliminary design of HSL. Cooperation will be based on common workshops in Paris/Prague and consultations via electronic communications between the workshops and also include preparation for meeting and/or preparation of support material according to workshop discussions. It is supposed to organize workshops below at least:

### **Technical workshops:**

Main technical work is expected to be done in workshops per each technical area (2 days each workshop):

- Infrastructure
  - 2 Workshops
- CCS and ENE systems
  - 1 Workshop
- Maintenance
  - 1 Workshop
- Rolling Stock
  - 1 Workshop
- RAMS
  - 1 Workshop
- Operation
  - 1 Workshop

### **Design manual Workshops:**

Technical workshop will be used to review Design Manual (2 days each workshop):

- 1 Workshop to discuss draft Design Manual
- 1 Workshop to discuss final Design Manual

Main technical disciplines may imply specific workshops.

Workshops will be in French language translated to Czech by interpreter (SŽDC will ensure). Design Manual will be written by SZDC (both English/Czech language).

Number of workshops can be modified in accordance to needs.

## **C. Feasibility study workshops**

Revision of technical solutions of feasibility studies currently processed by third parties for SŽDC will be done. Activity will include consultations about basic technical solutions (general conception, track alignment, etc.). SŽDC will prepare material for discussions in English (not all the study will be revised). It is supposed to organize workshops below at least (2 days each workshop):

- 2 Workshops to comment outputs of 3 feasibility studies

## ANNEX 2

### Definition of the fees

<b>Item</b>	<b>Cost [EUR]</b>
Study tour	<b>40 000</b>

<b>Position</b>	<b>Rate [EUR/hour]</b>
Principal	<b>190</b>
Senior engineer	<b>147</b>
Engineer	<b>110</b>

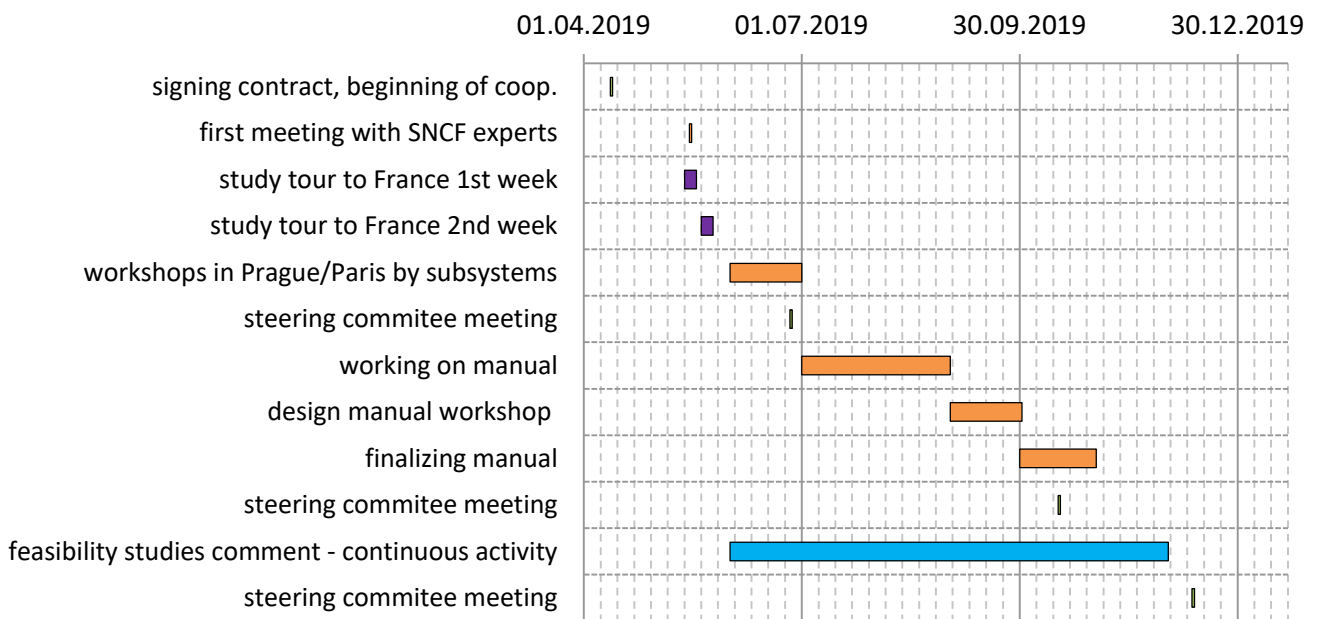
½ day is counted as 4 hours. 1 day is counted as 8 hours.

It is understood between the Parties that the total fee for the Services provided to the Client as described in Annex 1, will not exceed EUR 413 999 / CZK 11 914 999 (hereinafter referred to as the "Fee Cap"). This amount is quoted net of VAT.

### ANNEX 3

#### Basic schedule of cooperation

Activity	(Beginning-)	End
signing contract, beginning of cooperation		12.04.2019
first meeting with SNCF experts		15.05.2019
study tour to France 1st week	13.05.2019	17.05.2019
study tour to France 2nd week	20.05.2019	24.05.2019
workshops in Prague/Paris by subsystems	01.06.2019	30.06.2019
steering committee meeting		26.06.2019
working on Design Manual	01.07.2019	31.08.2019
Design Manual workshop	01.09.2019	30.09.2019
finalizing Design Manual	30.09.2019	31.10.2019
steering committee meeting		16.10.2019
feasibility studies comment - continuous activity	01.06.2019	30.11.2019
steering committee meeting		11.12.2019
end of cooperation		31.12.2019



**Ověřovací doložka změny datového formátu dokumentu podle § 69a zákona č. 499/2004 Sb.**

**Doložka číslo:** 273394

**Původní datový formát:** application/pdf

**UUID původní komponenty:** 1175e3b8-c63f-4f11-9e4a-1c90c04a7056

**Jméno a příjmení osoby, která změnu formátu dokumentu provedla:**

System ERMS (zpracovatel dokumentu Eliška JIRKOVÁ)

**Subjekt, který změnu formátu provedl:** Správa železniční dopravní cesty, státní organizace

**Datum vyhotovení ověřovací doložky:** 09.05.2019 15:16:57



855fa50e-dc17-4f67-9a38-54d19132859e